

PLAT RECORDING SHEET

PLAT NAME: Fort Bend County M.U.D. No. 237A Lift Station No. 1

PLAT NO: _____

ACREAGE: 0.478

LEAGUE: B.B.B. & C. Survey Railroad Co, Section 3

ABSTRACT NUMBER: 128

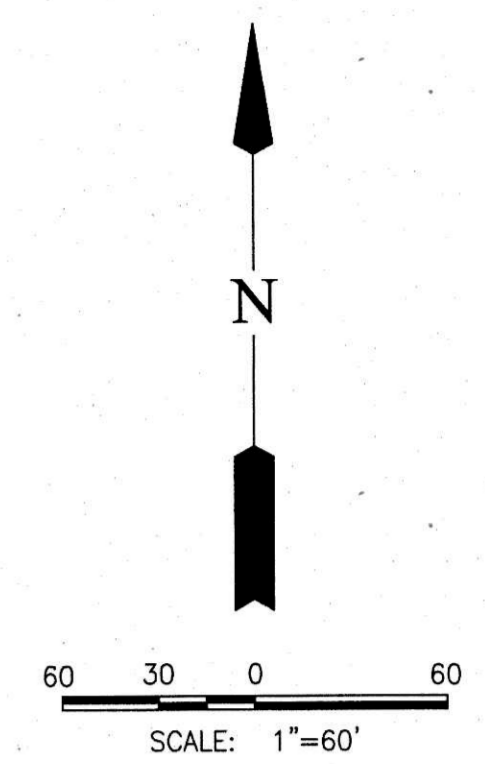
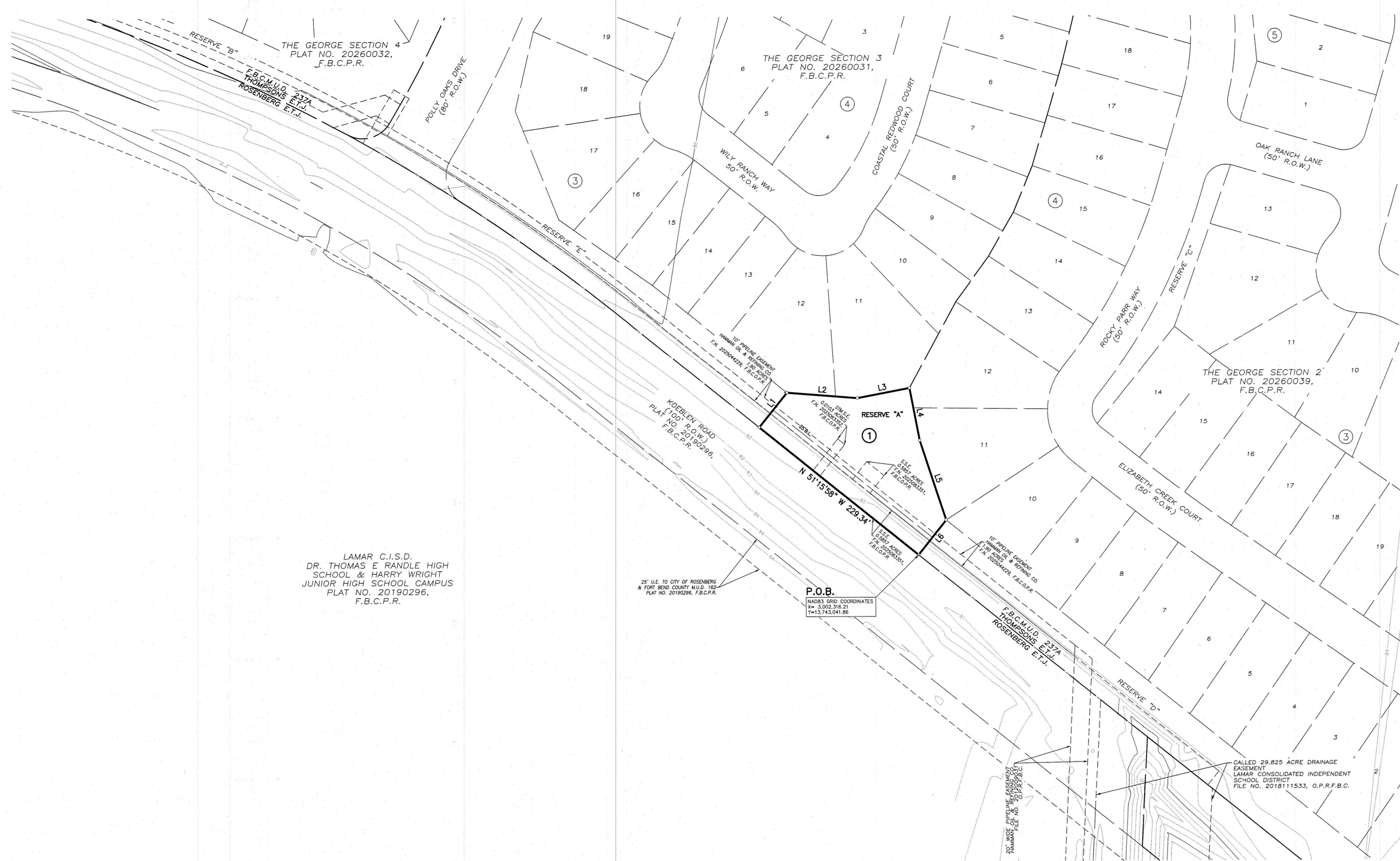
NUMBER OF BLOCKS: 1

NUMBER OF LOTS: 0

NUMBER OF RESERVES: 1

OWNERS: GF 2977 LP

(DEPUTY CLERK)



- LEGEND**
- B.L. INDICATES BUILDING LINE.
 - D.E. INDICATES DRAINAGE EASEMENT.
 - ESMT. INDICATES EASEMENT
 - F.B.C.P.R. INDICATES FORT BEND COUNTY PLAT RECORDS
 - F.B.C.O.P.R. INDICATES FORT BEND COUNTY OFFICIAL PUBLIC RECORDS
 - F.B.C.D.R. INDICATES FORT BEND COUNTY DEED RECORDS
 - F.N. INDICATES FILE NUMBER
 - NO. INDICATES NUMBER
 - PG. INDICATES PAGE
 - P.O.B. INDICATES POINT OF BEGINNING
 - R.O.W. INDICATES RIGHT-OF-WAY
 - S.S.E. INDICATES SANITARY SEWER EASEMENT
 - STM.S.E. INDICATES STORM SEWER EASEMENT
 - U.E. INDICATES UTILITY EASEMENT
 - VOL. INDICATES VOLUME
 - W.L.E. INDICATES WATER LINE EASEMENT

LAMAR C.I.S.D.
DR. THOMAS E. RANDLE HIGH
SCHOOL & HARRY WRIGHT
JUNIOR HIGH SCHOOL CAMPUS
PLAT NO. 20190296,
F.B.C.P.R.

25' U.E. TO CITY OF ROSENBERG
& FORT BEND COUNTY M.U.D. 162
PLAT NO. 20190296, F.B.C.P.R.

P.O.B.
NA83 GRID COORDINATES
X= 3,002,316.21
Y= 13,743,041.86

CALLLED 29.825 ACRE DRAINAGE
EASEMENT
LAMAR CONSOLIDATED INDEPENDENT
SCHOOL DISTRICT
FILE NO. 2018111533, O.P.R.F.B.C.

RESERVE TABLE				
RESERVE	ACREAGE	SQ.FT.	TYPE	MAINTENANCE/OWNERSHIP
A	0.478	20,834	RESTRICTED TO LIFT STATION / LANDSCAPE	FORT BEND COUNTY M.U.D. NO. 237A

LINE TABLE		
LINE	BEARING	DISTANCE
L1	N 38°44'02" E	50.00'
L2	S 85°27'40" E	79.57'
L3	N 79°12'38" E	60.00'
L4	S 10°47'22" E	60.00'
L5	S 18°11'24" E	94.20'
L6	S 38°44'02" W	50.00'

FORT BEND COUNTY M.U.D. NO. 237A LIFT STATION NO. 1

A SUBDIVISION OF 0.478 ACRES OF LAND LOCATED IN THE
B.B.B. & C. SURVEY RAILROAD CO, SECTION 3, ABSTRACT 128,
FORT BEND COUNTY, TEXAS.

0 LOTS 1 RESERVE 1 BLOCK
MARCH 23, 2026 JOB NO. 4683-1701C

OWNERS:
GF 2977 LP,
A TEXAS LIMITED PARTNERSHIP
13131 DAIRY ASHFORD, SUITE 210
SUGAR LAND, TEXAS 77479
PH: 713.960.9977

<p>SURVEYOR: GBI PARTNERS 4724 VISTA ROAD PASADENA, TX 77505 PHONE: 281-499-4539</p>	<p>ENGINEER: LJA Engineering, Inc. 1904 W. Grand Parkway North Suite 100 Katy, Texas 77449</p>	<p>PHONE: 713.953.5200 FAX: 713.953.5026 FRN-F-1386</p>
---	---	--