



Fort Bend County Engineering
FORT BEND COUNTY, TEXAS

J. Stacy Slawinski, P.E.
County Engineer

February 09, 2026

Commissioner Grady Prestage
Fort Bend County Precinct 2
303 Texas Parkway, Ste 21
Missouri City, Texas 77489

RE: Glendale Lakes Section 16 - Traffic Control Plan

Dear Commissioner Prestage:

The Construction Completion letter was issued on 02/09/2026, which started the one year maintenance period. Fort Bend County Engineering has completed and recommends approval of the traffic control plan for the above referenced subdivision. The public hearing date for acceptance of the plan is being scheduled.

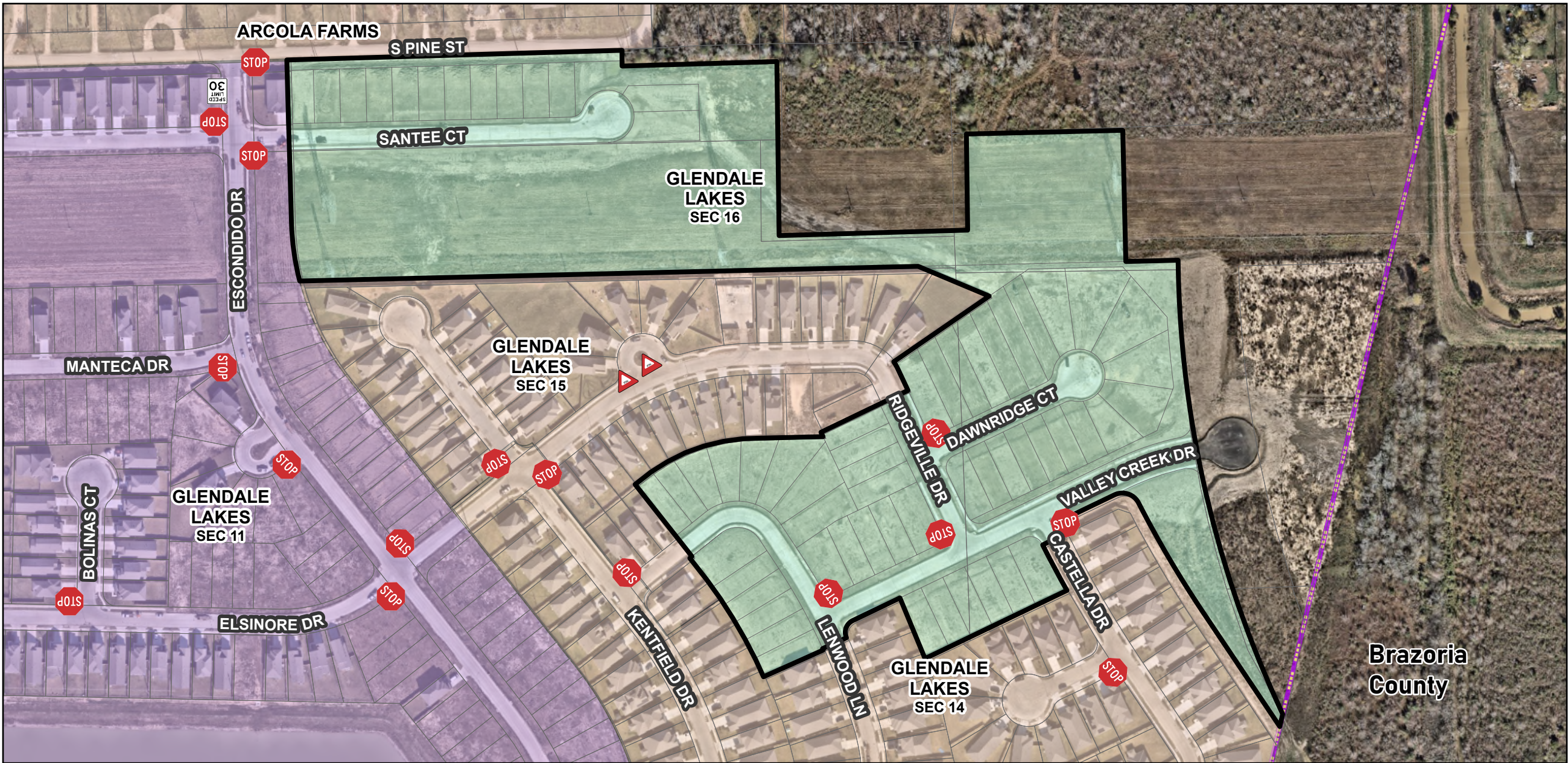
A copy of the traffic control plan is attached for your review. If you should have any questions, please give me a call.

Sincerely,

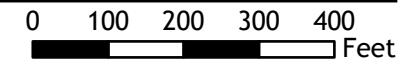
Chris Debaillon, PE, PTOE
Assistant County Engineer – Traffic

CD/mm

cc: Judge KP George, County Judge
Scott Wieghat - FBC Road & Bridge
Brian Fields - Signage Department
Major Rudy Castaneda – FBC Sheriff's Office Rudy.Castaneda@fortbendcountytexas.gov
Major Manuel Zamora – FBC Sheriff's Office Manuel.Zamora@fortbendcountytexas.gov
File






Brazoria
County



Plan by: Engineering GIS
 Date: 2/9/2026
 Plan Approved by: Chris Debaillon, PE PTOE
 Date: CD 2/9/26

Glendale Lakes Section 16

Legend

-  Speed Limit 30 mph
-  Stop
-  Yield

Notes:
 The purpose of this traffic control plan is to establish traffic control for Glendale Lakes section 16.