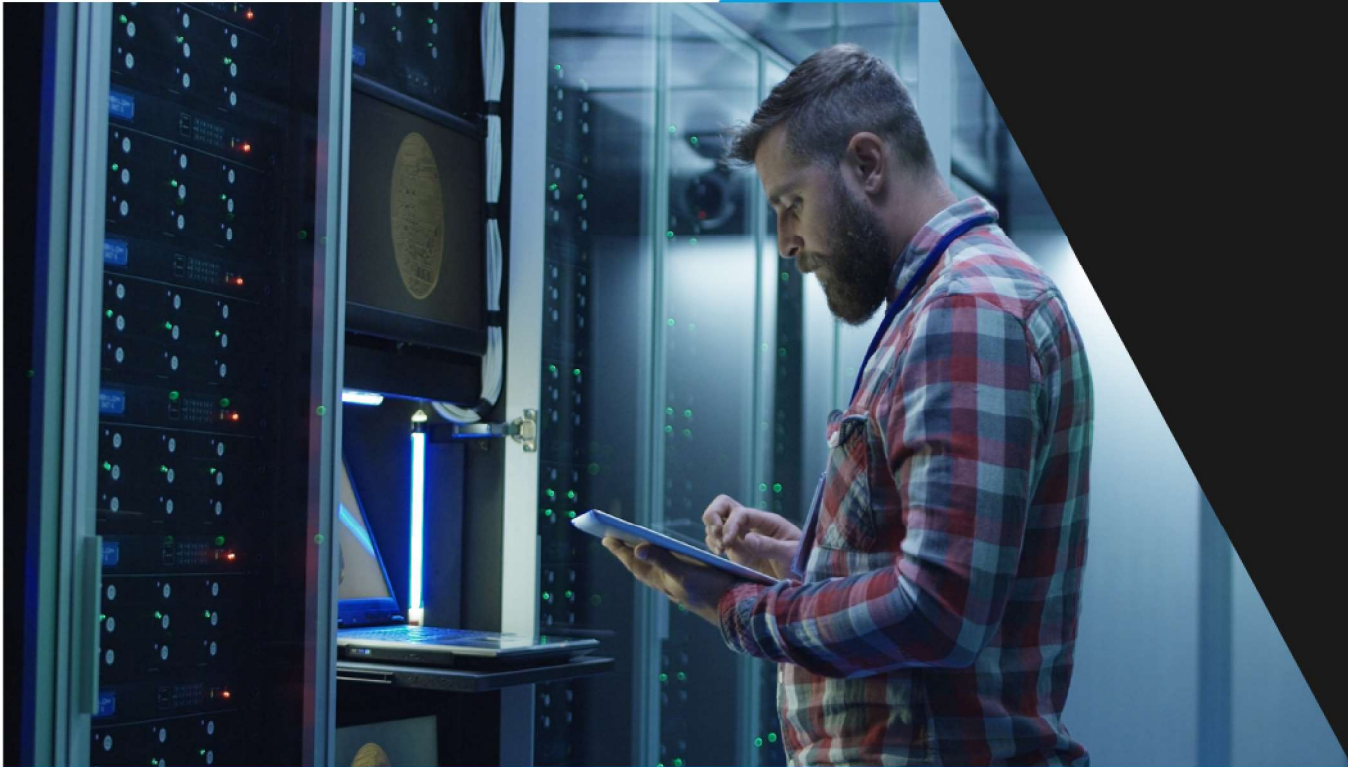


2026

WEAVER GOV



FBC - WGS - R570 EOC Server 16C


Fort Bend County
Clay Elliot
clay.elliott@fortbendcountytexas.gov

PREPARED FOR:
Fort Bend County

DATE
February 11, 2026

2026

Texas Certified HUB 18637 1863737568500 / 531301

 Purchasing Contract
Dell DIR-CPO-5792

Hardware

Description	Price	Qty	Ext. Price
210-BPCH PowerEdge R570 Smart Selection - [PROMO_R570_1]	\$10,080.78	1	\$10,080.78
Subtotal:			\$10,080.78

Coty Spengler
Account Executive

Contact:

coty.spengler@weavertech.us

2026

FBC - WGS - R570 EOC Server 16C

**Prepared by:**

Weaver Government Solutions

106 Green Meadows Blvd
Fredericksburg, Texas
Coty Spengler
coty.spengler@weavertech.us

Ship To:

Fort Bend County

500 Liberty St.
Richmond, TX 77469
Clay Elliot
(281) 341-4588
clay.elliott@fortbendcountytexas.gov

Bill To:

Fort Bend County

500 Liberty St.
Richmond, TX 77469
Clay Elliot
(281) 341-4588
clay.elliott@fortbendcountytexas.gov

Quote Information:

Quote #: 005163

Version: 1
Expiration Date: 03/12/2026

Quote Summary

Description	Amount
Hardware	\$10,080.78
Total:	\$10,080.78

Taxes, shipping, handling and other fees may apply. We reserve the right to cancel orders arising from pricing or other errors.

Coty Spengler
Account Executive

Contact:

coty.spengler@weavertech.us

SKU	Description	Qty
	PowerEdge R570 Smart Selection - [PROMO_R570_1]	1
	Customer Agreement No: DIR-CPO-5792	
210-BPCH	PowerEdge R570 Server, Enterprise	1
321-BMCC	3.5" Chassis with up to 12 SAS4/SATA Drives, PERC 12 (H965i or H365i)	1
338-CTBM	Intel Xeon 6 Performance 6511P 2.3G, 16C/32T, 72M Cache, Turbo, (150W) DDR5-6400	1
412-BBMC	Heatsink for 1 CPU Configuration (CPU greater than 250W)	1
370-AAIP	Performance Optimized	1
370-BCCX	6400MT/s RDIMMs	1
780-BCDS	Unconfigured RAID	1
405-ABDV	H965i Adapter Full Height	1
750-AABF	Power Saving Dell Active Power Controller	1
800-BBDM	UEFI BIOS Boot Mode with GPT Partition	1
384-BDQR	PowerEdge 2U High Performance Gold Fan	1
450-BDRV	Dual,Redundant(1+1),Hot-PlugMHSPowerSupply,800WMM(100-240Vac)Titanium	1
330-BDFP	Riser Config 10, Rear Full Height 1x16 Onboard OCP, 1x16 FLOP OCP, 3x16 FH (Gen5)	1
338-CRGW	PowerEdge R570 Motherboard, DAO	1
780-BCZQ	No OCP Blanks or Cables Required	1
470-AEYU	No Cables Required	1
350-BDBP	PowerEdge 2U Standard Bezel	1
350-BDDF	Dell Luggage Tag, R570	1

403-BDMM	BOSS-N1 controller card + with 2 M.2 480GB (RAID 1) (22x80)	1
634-CVGB	Windows Server 2025 Standard, 16CORE, FI, No Med, No CAL, Multi Language	1
634-CSHS	Secure Enterprise Key Manager License 3.0	1
634-CSHT	Secured Component Verification	1
634-CSHY	iDRAC10, Enterprise 17G	1
379-BFXT	Dell Connectivity Client - Disabled	1
634-CZRP	Dell Connectivity Module 17G	1
634-CZWJ	Dell Secure Onboarding Client 17G - Disabled	1
350-BDDG	Blank Left Ear Module	1
379-BETF	iDRAC Legacy Password for OCP cards	1
770-BDRQ	Cable Management Arm, 2U	1
770-BECC	ReadyRails Sliding Rails (B21)	1
340-DNSW	PowerEdge Shipping	1
389-FJKY	PowerEdge R570 Shipping	1
340-DPDX	PowerEdge 2U Shipping Material	1
389-FHJC	PowerEdge CCC, CE Label Marking	1
470-AEYU	No Cables Required	1
717-5860	Dell Hardware Limited Warranty Plus Onsite Service	1
717-5882	ProSupport Next Business Day Onsite Service After Problem Diagnosis 3 Years	1

717-5892	ProSupport 7x24 Technical Support and Assistance 3 Years	1
989-3439	Thank you choosing Dell ProSupport. For tech support, visit //www.dell.com/support or call 1-800- 945-3355	1
900-9997	On-Site Installation Declined	1
370-BCGH	16GB RDIMM 6400Mt/s, Single Rank	4
161-BCQX	12TB Hard Drive SATA ISE 6Gbps 7.2K 512e 3.5in Hot-Plug, AG Drive	2
450-AALV	Power Cord - NEMA 5-15P to C13, 3M, 125V, 15A (North America, Guam, North Marianas, Philippines, Samoa, Vietnam)	2
540-BFPP	Broadcom 5719 Quad Port 1GbE Base-T Adapter, OCP 3.0 NIC +Sec	1
540-BFPX	Broadcom 57412 Dual Port 10GbE BASE-T Adapter, OCP 3.0 NIC +Sec	1
528-DHTW	Windows Server 2025 Standard,16CORE,DF Recovery Image, Multi Lang, (Downgrade not included)	1
528-DHVD	Windows Server 2025 Standard,No Media,WS2022 Std Downgrade DF Media, Multi Language	1
634-CVBQ	Windows Server 2025 Standard,No Media, WS2022 Std Downgrade w/DVD Media,Multi Lang	1
634-CVGJ	Windows Server 2025 Standard,16CORE,Media Kit, Multi Lang, (Downgrade not included)	1