

PLAT RECORDING SHEET

PLAT NAME: Monarch Landing Section 4

PLAT NO: _____

ACREAGE: 64.151

LEAGUE: H.&T.C R.R. CO. Survey

ABSTRACT NUMBER: 239

NUMBER OF BLOCKS: 4

NUMBER OF LOTS: 205

NUMBER OF RESERVES: 5

OWNERS: KL LB BUY 2 LLC,

(DEPUTY CLERK)

B:\PROJECT DIRECTORY\09101-LENNAR HOMES\0004.01-SECTION 4\CAD\PLAT\09101.0004.01-PLAT.DWG

STATE OF TEXAS
COUNTY OF FORT BEND

WE, KL LB BUY 2 LLC, A DELAWARE LIMITED LIABILITY COMPANY, ACTING BY AND THROUGH NATHAN HOLT, AUTHORIZED SIGNATORY, OWNERS OF THE 64.151 ACRE TRACT DESCRIBED IN THE ABOVE AND FOREGOING MAP OF MONARCH LANDING SECTION 4, DO HEREBY MAKE AND ESTABLISH SAID SUBDIVISION AND DEVELOPMENT PLAT OF SAID PROPERTY ACCORDING TO ALL LINES, DEDICATIONS, RESTRICTIONS AND NOTATIONS ON SAID MAPS OR PLAT AND HEREBY DEDICATE TO THE USE OF THE PUBLIC FOREVER, ALL STREETS, ALLEYS, PARKS, WATER COURSES, DRAINS, EASEMENTS AND PUBLIC PLACES SHOWN THEREON FOR THE PURPOSES AND CONSIDERATIONS THEREIN EXPRESSED, AND DO HEREBY BIND OURSELVES, OUR HEIRS, AND ASSIGNS TO WARRANT AND FOREVER DEFEND THE TITLE TO THE LAND SO DEDICATED.

FURTHER, OWNERS HAVE DEDICATED AND BY THESE PRESENTS DO DEDICATE TO THE USE OF THE PUBLIC FOR PUBLIC UTILITY PURPOSES FOREVER UNOBSTRUCTED AERIAL EASEMENTS, THE AERIAL EASEMENTS SHALL EXTEND HORIZONTALLY AN ADDITIONAL ELEVEN FEET, SIX INCHES (11'6") FOR TEN FEET (10'0") PERIMETER GROUND EASEMENTS OR SEVEN FEET, SIX INCHES (7'6") FOR FOURTEEN FEET (14'0") PERIMETER GROUND EASEMENTS OR FIVE FEET, SIX INCHES (5'6") FOR SIXTEEN FEET (16'0") PERIMETER GROUND EASEMENTS, FROM A PLANE SIXTEEN FEET (16'0") ABOVE THE GROUND LEVEL UPWARD, LOCATED ADJACENT TO AND ADJOINING SAID PUBLIC UTILITY EASEMENTS THAT ARE DESIGNATED WITH AERIAL EASEMENTS (U.E. AND A.E.) AS INDICATED AND DEPICTED HEREON, WHEREBY THE AERIAL EASEMENT TOTALS TWENTY ONE FEET, SIX INCHES (21'6") IN WIDTH.

FURTHER, OWNERS HAVE DEDICATED AND BY THESE PRESENTS DO DEDICATE TO THE USE OF THE PUBLIC FOR PUBLIC UTILITY PURPOSES FOREVER UNOBSTRUCTED AERIAL EASEMENTS, THE AERIAL EASEMENTS SHALL EXTEND HORIZONTALLY AN ADDITIONAL TEN FEET (10'0") FOR TEN FEET (10'0") BACK-TO-BACK GROUND EASEMENTS, OR EIGHT FEET (8'0") FOR FOURTEEN FEET (14'0") BACK-TO-BACK GROUND EASEMENTS OR SEVEN FEET (7'0") FOR SIXTEEN FEET (16'0") BACK-TO-BACK GROUND EASEMENTS, FROM A PLANE SIXTEEN FEET (16'0") ABOVE THE GROUND LEVEL UPWARD, LOCATED ADJACENT TO BOTH SIDES AND ADJOINING ALL PUBLIC UTILITY EASEMENTS THAT ARE DESIGNATED WITH AERIAL EASEMENTS (U.E. AND A.E.) AS INDICATED AND DEPICTED HEREON, WHEREBY THE AERIAL EASEMENT TOTALS THIRTY FEET (30'0") IN WIDTH.

FURTHER, WE DO HEREBY DECLARE THAT ALL PARCELS OF LAND DESIGNATED AS LOTS ON THIS PLAT ARE INTENDED FOR THE CONSTRUCTION OF SINGLE FAMILY RESIDENTIAL DWELLING UNITS THEREON AND SHALL BE RESTRICTED FOR SAME UNDER THE TERMS AND CONDITIONS OF SUCH RESTRICTIONS FILED SEPARATELY.

FURTHER, WE DO HEREBY COVENANT AND AGREE THAT ALL OF THE PROPERTY WITHIN THE BOUNDARIES OF THIS PLAT SHALL BE RESTRICTED TO PREVENT THE DRAINAGE OF ANY SEPTIC TANKS INTO ANY PUBLIC OR PRIVATE STREET, ROAD OR ALLEY OR ANY DRAINAGE DITCH, EITHER DIRECTLY OR INDIRECTLY.

FURTHER, WE DO HEREBY DEDICATE TO THE PUBLIC A STRIP OF LAND TWENTY (20) FEET WIDE ON EACH SIDE OF THE CENTER LINE OF ANY AND ALL BAYOUS, CREEKS, GULLIES, RAVINES, DRAWS AND DRAINAGE DITCHES LOCATED IN SAID SUBDIVISION, AS EASEMENTS FOR DRAINAGE PURPOSES. FORT BEND COUNTY OR OTHER GOVERNMENTAL AGENCY SHALL HAVE THE RIGHT TO ENTER UPON SAID EASEMENT AT ANY AND ALL TIMES FOR THE PURPOSES OF CONSTRUCTION AND MAINTENANCE OF DRAINAGE FACILITIES AND STRUCTURES.

FURTHER, WE DO HEREBY COVENANT AND AGREE THAT ALL OF THE PROPERTY WITHIN THE BOUNDARIES OF THIS SUBDIVISION AND ADJACENT TO ANY DRAINAGE EASEMENT, DITCH, GULLY, CREEK OR NATURAL DRAINAGE WAY SHALL HEREBY BE RESTRICTED TO KEEP SUCH DRAINAGE WAYS AND EASEMENTS CLEAR OF FENCES, BUILDINGS, EXCESSIVE VEGETATION AND OTHER OBSTRUCTIONS TO THE OPERATIONS AND MAINTENANCE OF THE DRAINAGE FACILITY AND THAT SUCH ABUTTING PROPERTY SHALL NOT BE PERMITTED TO DRAIN DIRECTLY INTO THIS EASEMENT EXCEPT BY MEANS OF AN APPROVED DRAINAGE STRUCTURE.

FURTHER, OWNERS DO HEREBY CERTIFY THAT WE ARE THE OWNERS OF ALL PROPERTY IMMEDIATELY ADJACENT TO THE BOUNDARIES OF THE ABOVE AND FOREGOING SUBDIVISION OF MONARCH LANDING SECTION 4 WHERE BUILDING SETBACK LINES OR PUBLIC UTILITY EASEMENTS ARE TO BE ESTABLISHED OUTSIDE THE BOUNDARIES OF THE ABOVE AND FOREGOING SUBDIVISION AND DO HEREBY MAKE AND ESTABLISH ALL BUILDING SETBACK LINES AND DEDICATE TO THE USE OF THE PUBLIC, ALL PUBLIC UTILITY EASEMENTS SHOWN IN SAID ADJACENT ACREAGE.

FURTHER, WE DO HEREBY ACKNOWLEDGE THE RECEIPT OF THE ORDERS FOR REGULATION OF OUTDOOR LIGHTING IN THE UNINCORPORATED AREAS OF FORT BEND COUNTY, TEXAS, AND DO HEREBY COVENANT AND AGREE AND SHALL COMPLY WITH THIS ORDER AS ADOPTED BY FORT BEND COUNTY COMMISSIONERS COURT ON MARCH 23, 2004, AND ANY SUBSEQUENT AMENDMENTS.

IN TESTIMONY WHEREOF, THE KL LB BUY 2 LLC, A DELAWARE LIMITED LIABILITY COMPANY, HAS CAUSED THESE PRESENTS TO BE SIGNED BY NATHAN HOLT, ITS AUTHORIZED SIGNATORY, HERUNTO AUTHORIZED, THIS _____ DAY OF _____, 2025.

KL LB BUY 2 LLC,
A DELAWARE LIMITED LIABILITY COMPANY

BY: _____
NATHAN HOLT, AUTHORIZED SIGNATORY

STATE OF TEXAS
COUNTY OF FORT BEND

BEFORE ME, THE UNDERSIGNED AUTHORITY, ON THIS DAY PERSONALLY APPEARED NATHAN HOLT, AUTHORIZED SIGNATORY, KNOWN TO ME TO BE THE PERSON WHOSE NAME IS SUBSCRIBED TO THE FOREGOING INSTRUMENT AND ACKNOWLEDGE TO ME THAT HE EXECUTED THE SAME FOR THE PURPOSES AND CONSIDERATIONS THEREIN EXPRESSED.

GIVEN UNDER MY HAND AND SEAL OF OFFICE, THIS _____ DAY OF _____, 2025.

NOTARY PUBLIC IN AND FOR THE STATE OF TEXAS
PRINT NAME:

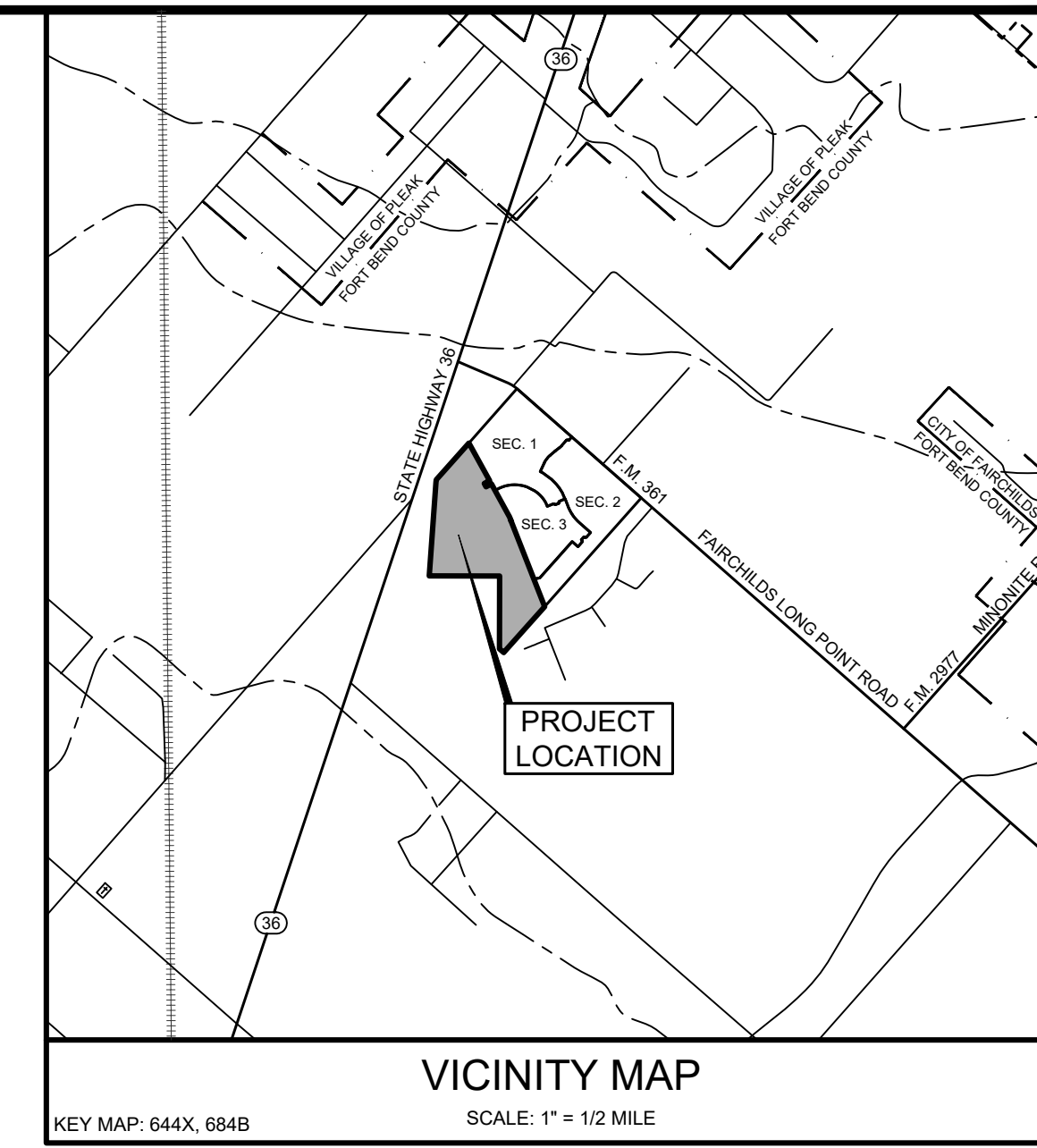
MY COMMISSION EXPIRES: _____

I, JULIANA BIHLET, A PROFESSIONAL ENGINEER REGISTERED IN THE STATE OF TEXAS, DO HEREBY CERTIFY THAT THIS PLAT MEETS ALL REQUIREMENTS OF FORT BEND COUNTY TO THE BEST OF MY KNOWLEDGE.

JULIANA BIHLET, P.E.
TEXAS REGISTRATION NO. 104900

I, JOEL BILYEU, AM REGISTERED UNDER THE LAWS OF THE STATE OF TEXAS TO PRACTICE THE PROFESSION OF SURVEYING AND HEREBY CERTIFY THAT THE ABOVE SUBDIVISION IS TRUE AND CORRECT, WAS PREPARED FROM AN ACTUAL SURVEY OF THE PROPERTY MADE UNDER MY SUPERVISION ON THE GROUND AND THAT ALL BOUNDARY CORNERS, ANGLE POINTS AND POINTS OF CURVATURE AND OTHER POINTS OF REFERENCE HAVE BEEN MARKED WITH IRON RODS HAVING AN OUTSIDE DIAMETER OF FIVE EIGHTH OF ONE INCH (5/8) AND A LENGTH OF THREE (3) FEET UNLESS OTHERWISE NOTED.

JOEL BILYEU
REGISTERED PROFESSIONAL LAND SURVEYOR
TEXAS REGISTRATION NO. 6106



I, J. STACY SLAWINSKI, P.E., FORT BEND COUNTY ENGINEER, DO HEREBY CERTIFY THAT THE PLAT OF THIS SUBDIVISION COMPLIES WITH ALL OF THE EXISTING RULES AND REGULATIONS OF THIS OFFICE AS ADOPTED BY THE FORT BEND COUNTY COMMISSIONERS' COURT. HOWEVER, NO CERTIFICATION IS HEREBY GIVEN AS TO THE EFFECT OF DRAINAGE FROM THIS SUBDIVISION ON THE INTERCEPTING DRAINAGE ARTERY OR PARENT STREAM OR ON ANY OTHER AREA OR SUBDIVISION WITHIN THE WATERSHED.

J. STACY SLAWINSKI, P.E.
FORT BEND COUNTY ENGINEER

APPROVED BY THE COMMISSIONERS' COURT OF FORT BEND COUNTY, TEXAS, THIS _____ DAY OF _____, 2025.

VINCENT M. MORALES, JR.
COMMISSIONER, PRECINCT 1

GRADY PRESTAGE
COMMISSIONER, PRECINCT 2

KP GEORGE
COUNTY JUDGE

W.A. "ANDY" MEYERS
COMMISSIONER, PRECINCT 3

DEXTER L. McCOY
COMMISSIONER, PRECINCT 4

I, LAURA RICHARD, COUNTY CLERK IN AND FOR FORT BEND COUNTY, DO HEREBY CERTIFY THAT THE FOREGOING INSTRUMENT WITH ITS CERTIFICATE OF AUTHENTICATION WAS FILED FOR RECORDATION IN MY OFFICE ON _____, 2025, AT _____ O'CLOCK _____ M., IN PLAT NUMBER _____ OF THE PLAT RECORDS OF FORT BEND COUNTY, TEXAS.

WITNESS MY HAND AND SEAL OF OFFICE, AT RICHMOND, TEXAS, THE DAY AND DATE LAST ABOVE WRITTEN.

LAURA RICHARD,
COUNTY CLERK
FORT BEND COUNTY, TEXAS

BY: _____
DEPUTY

MONARCH LANDING SECTION 4

A SUBDIVISION OF
64.151 ACRES OF LAND
LOCATED IN THE
H.&T.C. R.R. CO. SURVEY, ABSTRACT NO. 239
FORT BEND COUNTY, TEXAS

205 LOTS 4 BLOCKS 5 RESERVES

DATE: AUGUST, 2025

OWNER
KL LB BUY 2 LLC,
A DELAWARE LIMITED LIABILITY COMPANY
681 GREENS PARKWAY, SUITE 200
HOUSTON, TEXAS 77067
(281) 874-8459

ENGINEER

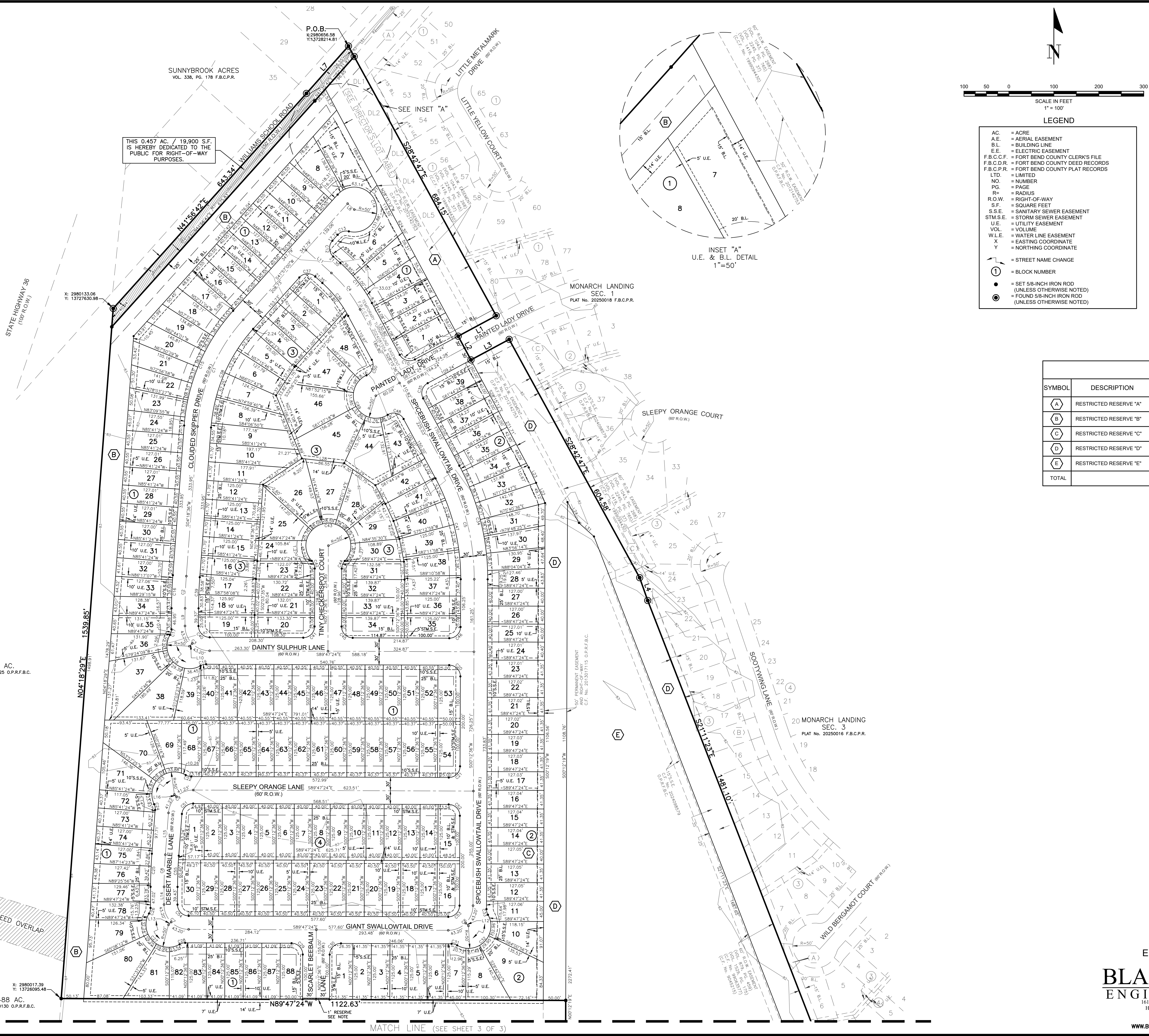
SURVEYOR

BLACKLINE
ENGINEERING

1616 S. Voss, Suite 300
Houston, TX 77057
(832) 431-5959
Firm No. 14051
WWW.BLACKLINE-ENG.COM



S & V SURVEYING, INC.
PROFESSIONAL LAND SURVEYORS
2011 KRAHN ROAD SPRING, TEXAS 77388
OFFICE - (281) 353-2570 FAX - (281) 353-2407
TBPELS Firm No. 100247-00
www.svsurveying.com



THIS 0.457 AC. / 19,900 S.F. IS HEREBY DEDICATED TO THE PUBLIC FOR RIGHT-OF-WAY PURPOSES.

LEGEND

- AC. = ACRE
- A.E. = AERIAL EASEMENT
- B.L. = BUILDING LINE
- E.E. = ELECTRIC EASEMENT
- F.B.C.C.P. = FORT BEND COUNTY CLERK'S FILE
- F.B.C.D.R. = FORT BEND COUNTY DEED RECORDS
- F.B.C.P.R. = FORT BEND COUNTY PLAT RECORDS
- LTD. = LIMITED
- NO. = NUMBER
- PG. = PAGE
- R. = RADIUS
- R.O.W. = RIGHT-OF-WAY
- S.F. = SQUARE FEET
- S.S.E. = SANITARY SEWER EASEMENT
- STM.S.E. = STORM SEWER EASEMENT
- U.E. = UTILITY EASEMENT
- VOL. = VOLUME
- W.L.E. = WATER LINE EASEMENT
- X = EASTING COORDINATE
- Y = NORTHING COORDINATE
- = STREET NAME CHANGE
- ① = BLOCK NUMBER
- = SET 5/8-INCH IRON ROD (UNLESS OTHERWISE NOTED)
- ⊙ = FOUND 5/8-INCH IRON ROD (UNLESS OTHERWISE NOTED)

RESERVE TABLE

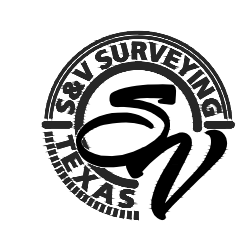
SYMBOL	DESCRIPTION	RESERVE USE	AREA
Ⓐ	RESTRICTED RESERVE "A"	RESTRICTED TO LANDSCAPE/OPEN SPACE/PIPELINE USE	1.375 AC. - 59,886 S.F.
Ⓑ	RESTRICTED RESERVE "B"	RESTRICTED TO LANDSCAPE/OPEN SPACE/ DRAINAGE USE	2.505 AC. - 108,112 S.F.
Ⓒ	RESTRICTED RESERVE "C"	RESTRICTED TO LANDSCAPE/UTILITY USE	0.117 AC. - 5,082 S.F.
Ⓓ	RESTRICTED RESERVE "D"	RESTRICTED TO LANDSCAPE/OPEN SPACE/PIPELINE USE	4.537 AC. - 197,637 S.F.
Ⓔ	RESTRICTED RESERVE "E"	RESTRICTED TO DETENTION/DRAINAGE USE	19.060 AC. - 830,270 S.F.
TOTAL			27.594 AC. - 1,201,987 S.F.

MONARCH LANDING SECTION 4
 A SUBDIVISION OF
 64.151 ACRES OF LAND
 LOCATED IN THE
 H.&T.C. R.R. CO. SURVEY, ABSTRACT NO. 239
 FORT BEND COUNTY, TEXAS

205 LOTS 4 BLOCKS 5 RESERVES
 DATE: AUGUST, 2025 SCALE: 1" = 100'

OWNER
 KL LB BUY 2 LLC,
 A DELAWARE LIMITED LIABILITY COMPANY
 681 GREENS PARKWAY, SUITE 200
 HOUSTON, TEXAS 77067
 (281) 874-8459

ENGINEER
BLACKLINE ENGINEERING
 1616 S. Voss, Suite 300
 Houston, TX 77057
 (832) 451-5959
 Firm No. 14051
 WWW.BLACKLINE-ENG.COM



SURVEYOR
S & V SURVEYING, INC.
 PROFESSIONAL LAND SURVEYORS
 2011 KRAHN ROAD SPRING, TEXAS 77388
 OFFICE - (281) 353-2570 FAX - (281) 353-2407
 TBPELS Firm No. 100247-00
 www.svsurveying.com

B:\PROJECT DIRECTORY\09101-LENNAR HOMES\0004.01-SECTION 4\CAD\PLAT\09101.0004.01.PLAT.DWG

CURVE TABLE					
CURVE	RADIUS	DELTA	ARC LENGTH	CHORD BEARING	CHORD LENGTH
C1	400.00'	37°38'24"	262.78'	S23°07'48"W	258.08'
C2	1000.00'	4°06'00"	71.56'	S02°15'36"W	71.54'
C3	55.00'	90°00'00"	86.39'	S44°47'24"E	77.78'
C4	300.00'	19°47'24"	103.62'	S38°09'18"E	103.11'
C5	500.00'	28°28'13"	248.45'	S14°01'30"E	245.90'
C6	55.00'	90°00'00"	86.39'	S45°12'36"W	77.78'
C7	55.00'	90°00'00"	86.39'	N44°47'24"W	77.78'
C8	1000.00'	4°06'00"	71.56'	N02°15'36"E	71.54'
C9	55.00'	85°54'00"	82.46'	N47°15'36"E	74.95'
C10	25.00'	90°00'00"	39.27'	N73°15'36"W	35.36'
C11	330.00'	19°47'24"	113.98'	N38°09'18"W	113.42'
C12	25.00'	90°00'00"	39.27'	N03°03'00"W	35.36'
C13	25.00'	62°10'55"	27.13'	N73°02'27"E	25.82'
C14	50.00'	242°10'55"	211.34'	N16°57'33"W	85.63'
C15	430.00'	37°38'24"	282.49'	S23°07'48"W	277.43'
C16	1030.00'	4°06'00"	73.71'	S02°15'36"W	73.69'
C17	25.00'	29°55'35"	13.06'	S15°10'24"W	12.91'
C18	50.00'	149°51'10"	130.77'	S44°47'24"E	96.56'
C19	25.00'	29°55'35"	13.06'	N75°14'48"E	12.91'
C20	25.00'	90°00'00"	39.27'	S44°47'24"E	35.36'
C21	25.00'	90°00'00"	39.27'	S45°12'36"W	35.36'
C22	25.00'	29°55'35"	13.06'	N74°49'36"W	12.91'
C23	50.00'	145°45'10"	127.19'	S47°15'36"W	95.57'
C24	25.00'	29°55'35"	13.06'	S10°39'12"E	12.91'
C25	1030.00'	4°06'00"	73.71'	S02°15'36"W	73.69'
C26	25.00'	29°55'35"	13.06'	S15°10'24"W	12.91'
C27	50.00'	149°51'10"	130.77'	S44°47'24"E	96.56'
C28	25.00'	29°55'35"	13.06'	N75°14'48"E	12.91'

CURVE TABLE					
CURVE	RADIUS	DELTA	ARC LENGTH	CHORD BEARING	CHORD LENGTH
C29	25.00'	90°00'00"	39.27'	S44°47'24"E	35.36'
C30	25.00'	90°00'00"	39.27'	N45°12'36"E	35.36'
C31	25.00'	29°55'35"	13.06'	S44°47'24"E	12.91'
C32	50.00'	149°51'10"	130.77'	N45°12'36"E	96.56'
C33	25.00'	29°55'35"	13.06'	N14°45'12"W	12.91'
C34	530.00'	28°28'13"	263.37'	N41°01'30"W	260.66'
C35	25.00'	90°00'00"	39.27'	N16°44'24"E	35.36'
C36	270.00'	19°47'24"	93.26'	N38°09'18"W	92.80'
C37	25.00'	90°00'00"	39.27'	S86°57'00"W	35.36'
C38	370.00'	37°38'24"	243.07'	S23°07'48"W	238.72'
C39	970.00'	4°06'00"	69.41'	S02°15'36"W	69.40'
C40	25.00'	90°00'00"	39.27'	S44°47'24"E	35.36'
C41	25.00'	90°00'00"	39.27'	N45°12'36"E	35.36'
C42	25.00'	42°50'00"	18.69'	N21°12'24"W	18.26'
C43	50.00'	265°40'01"	231.84'	S89°47'24"E	73.33'
C44	25.00'	42°50'00"	18.69'	S21°37'36"W	18.26'
C45	25.00'	90°00'00"	39.27'	S44°47'24"E	35.36'
C46	25.00'	90°00'00"	39.27'	N45°12'36"E	35.36'
C47	470.00'	28°28'13"	233.54'	N14°01'30"W	231.15'
C48	25.00'	93°51'15"	40.95'	N75°11'14"W	36.52'
C49	50.00'	187°42'30"	163.81'	N28°15'36"W	99.77'
C50	25.00'	93°51'15"	40.95'	N18°40'02"E	36.52'
C51	25.00'	85°54'00"	37.48'	N47°15'36"E	34.07'
C52	25.00'	90°00'00"	39.27'	S44°47'24"E	35.36'
C53	25.00'	90°00'00"	39.27'	S02°15'36"W	35.36'
C54	25.00'	90°00'00"	39.27'	N44°47'24"W	35.36'
C55	970.00'	4°06'00"	69.41'	N02°15'36"E	69.40'

LINE TABLE		
LINE	BEARING	LENGTH
L1	S61°44'24"W	96.00'
L2	S28°15'12"E	60.00'
L3	N61°44'24"E	96.49'
L4	N19°26'42"W	53.85'
L5	S42°12'02"W	8.33'
L6	N48°04'03"W	89.34'
L7	N41°35'42"E	140.84'
L8	N48°03'00"W	20.00'
L9	S00°12'36"W	39.37'
L10	S45°12'36"W	8.64'
L11	S48°03'00"E	76.35'
L12	S44°47'24"E	8.64'
L13	S45°12'36"W	8.64'
L14	N00°12'36"E	39.43'
L15	N04°18'36"E	93.24'
L16	N42°44'24"W	6.48'

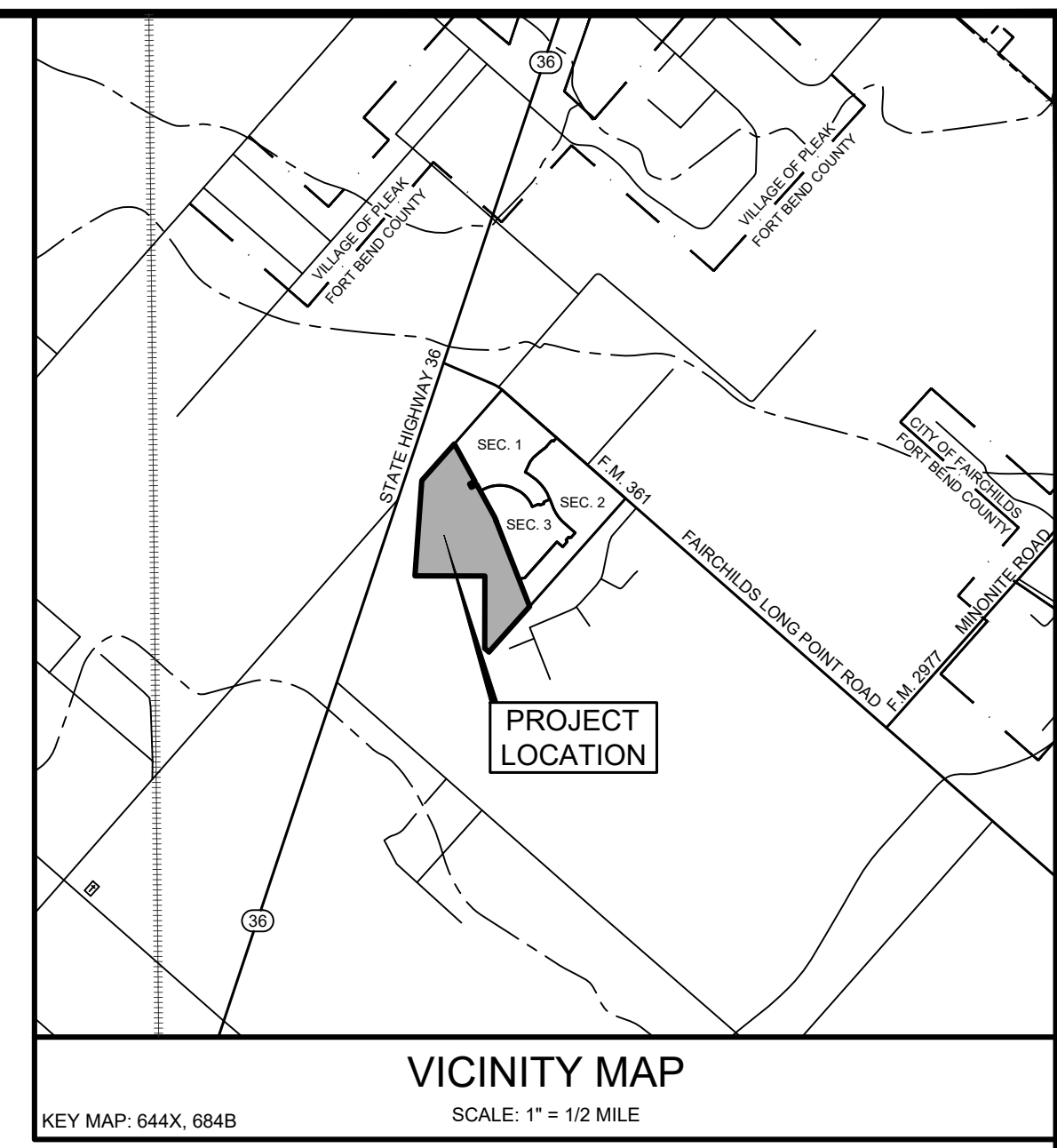
LINE TABLE		
LINE	BEARING	LENGTH
L17	S28°15'08"E	42.17'
L18	S18°16'31"E	42.02'
L19	S11°17'32"E	51.54'
L20	S01°53'36"E	40.03'
L21	N43°00'32"E	24.17'
L22	N24°00'58"W	49.12'
L23	N25°27'50"W	37.85'
L24	S28°42'47"E	52.80'
L25	N00°12'36"E	50.00'
L26	N04°14'34"E	40.10'
L27	N56°04'01"E	103.99'
L28	S83°40'27"E	94.75'
L29	S54°48'56"E	85.05'
L30	S28°15'36"E	47.00'
L31	S47°57'32"E	45.17'

DISTRICT NAMES	
F.B.C. ASSISTANCE DISTRICT	12
WCID	N/A
MUD	FBC MUD 256
LID	N/A
DID	FBC DRAINAGE DISTRICT
SCHOOL	NEEDVILLE ISD, WHARTON COUNTY JUNIOR COLLEGE
FIRE	N/A
IMPACT FEE AREA	N/A
CITY OR CITY ETJ	FORT BEND COUNTY
UTILITIES CO.	CENTERPOINT ENERGY, FBC DRAINAGE DISTRICT
EMERGENCY SERVICES DISTRICT	ESD 6 AND 10

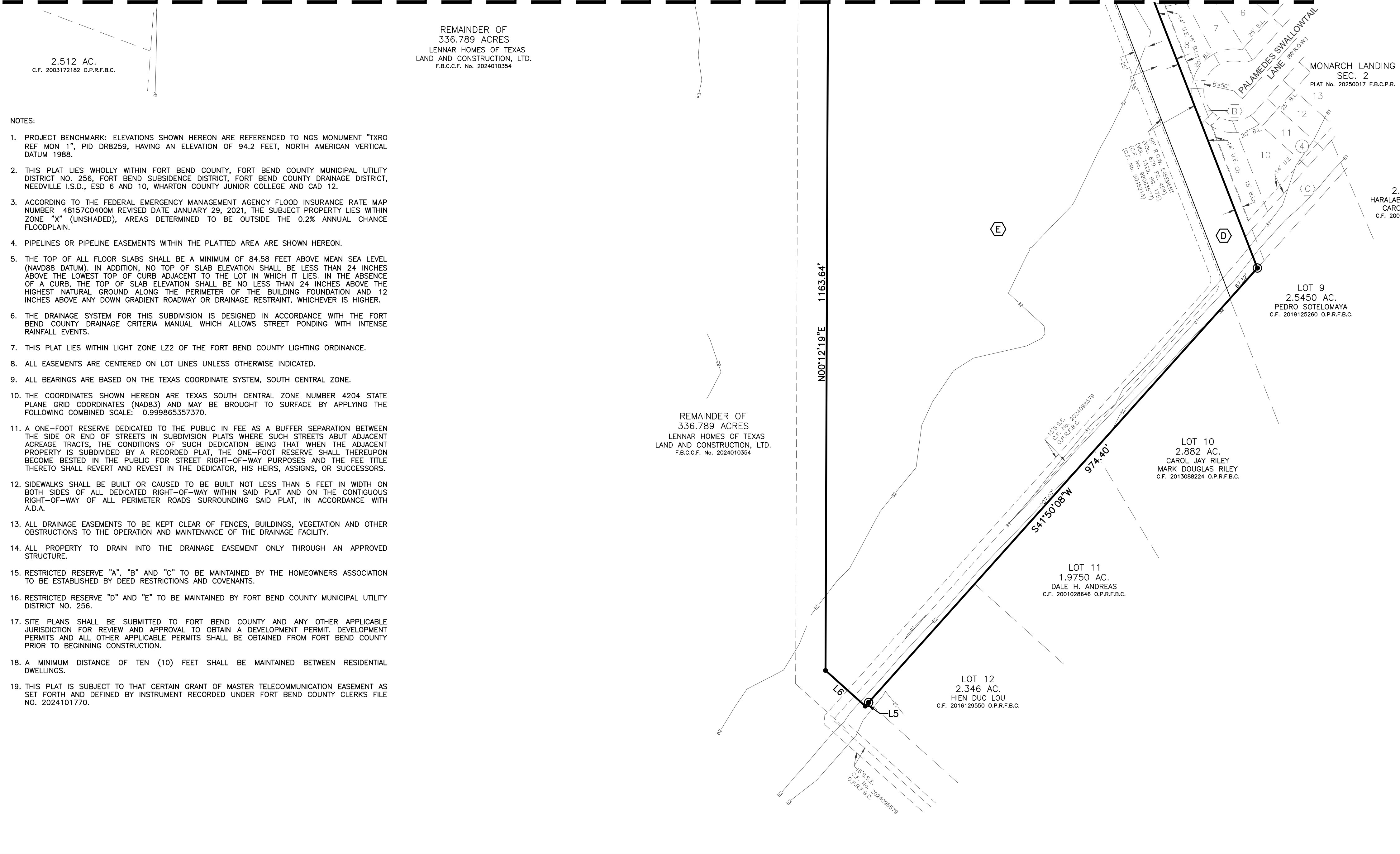
DIRECTOR'S LOT TABLE		
DL1	DIETRA ANN BONDS	C.F. NO. 2023087611
DL2	PAMELA MCLEOD GUTOWSKY	C.F. NO. 2023087614
DL3	CURTIS BERNARD LAMPLEY	C.F. NO. 2023087617
DL4	ADRIAN RODRIGUEZ	C.F. NO. 2023087620
DL5	JANELLE SCHINDWOLF WATSON	C.F. NO. 2023087623

LEGEND

- AC. = ACRE
- A.E. = AERIAL EASEMENT
- B.L. = BUILDING LINE
- E.E. = ELECTRIC EASEMENT
- F.B.C.C.F. = FORT BEND COUNTY CLERK'S FILE
- F.B.C.D.R. = FORT BEND COUNTY DEED RECORDS
- F.B.C.P.R. = FORT BEND COUNTY PLAT RECORDS
- LTD. = LIMITED
- NO. = NUMBER
- PG. = PAGE
- R. = RADIUS
- R.O.W. = RIGHT-OF-WAY
- S.F. = SQUARE FEET
- S.S.E. = SANITARY SEWER EASEMENT
- STM.S.E. = STORM SEWER EASEMENT
- U.E. = UTILITY EASEMENT
- VOL. = VOLUME
- W.L.E. = WATER LINE EASEMENT
- X = EASTING COORDINATE
- Y = NORTHING COORDINATE
- = STREET NAME CHANGE
- ① = BLOCK NUMBER
- = SET 5/8-INCH IRON ROD (UNLESS OTHERWISE NOTED)
- ⊙ = FOUND 5/8-INCH IRON ROD (UNLESS OTHERWISE NOTED)



MATCH LINE (SEE SHEET 2 OF 3)



- NOTES:
- PROJECT BENCHMARK: ELEVATIONS SHOWN HEREON ARE REFERENCED TO NGS MONUMENT TXRO REF MON 1", PID DR8259, HAVING AN ELEVATION OF 94.2 FEET, NORTH AMERICAN VERTICAL DATUM 1988.
 - THIS PLAT LIES WHOLLY WITHIN FORT BEND COUNTY, FORT BEND COUNTY MUNICIPAL UTILITY DISTRICT NO. 256, FORT BEND SUBSIDENCE DISTRICT, FORT BEND COUNTY DRAINAGE DISTRICT, NEEDVILLE I.S.D., ESD 6 AND 10, WHARTON COUNTY JUNIOR COLLEGE AND CAD 12.
 - ACCORDING TO THE FEDERAL EMERGENCY MANAGEMENT AGENCY FLOOD INSURANCE RATE MAP NUMBER 48157C0400M REVISED DATE JANUARY 23, 2021, THE SUBJECT PROPERTY LIES WITHIN ZONE "X" (UNSHADED), AREAS DETERMINED TO BE OUTSIDE THE 0.2% ANNUAL CHANCE FLOODPLAIN.
 - PIPELINES OR PIPELINE EASEMENTS WITHIN THE PLATTED AREA ARE SHOWN HEREON.
 - THE TOP OF ALL FLOOR SLABS SHALL BE A MINIMUM OF 84.58 FEET ABOVE MEAN SEA LEVEL (NAVD88 DATUM). IN ADDITION, NO TOP OF SLAB ELEVATION SHALL BE LESS THAN 24 INCHES ABOVE THE LOWEST TOP OF CURB ADJACENT TO THE LOT IN WHICH IT LIES. IN THE ABSENCE OF A CURB, THE TOP OF SLAB ELEVATION SHALL BE NO LESS THAN 24 INCHES ABOVE THE HIGHEST NATURAL GROUND ALONG THE PERIMETER OF THE BUILDING FOUNDATION AND 12 INCHES ABOVE ANY DOWN GRADIENT ROADWAY OR DRAINAGE RESTRAINT, WHICHEVER IS HIGHER.
 - THE DRAINAGE SYSTEM FOR THIS SUBDIVISION IS DESIGNED IN ACCORDANCE WITH THE FORT BEND COUNTY DRAINAGE CRITERIA MANUAL WHICH ALLOWS STREET PONDING WITH INTENSE RAINFALL EVENTS.
 - THIS PLAT LIES WITHIN LIGHT ZONE LZ2 OF THE FORT BEND COUNTY LIGHTING ORDINANCE.
 - ALL EASEMENTS ARE CENTERED ON LOT LINES UNLESS OTHERWISE INDICATED.
 - ALL BEARINGS ARE BASED ON THE TEXAS COORDINATE SYSTEM, SOUTH CENTRAL ZONE.
 - THE COORDINATES SHOWN HEREON ARE TEXAS SOUTH CENTRAL ZONE NUMBER 4204 STATE PLANE GRID COORDINATES (NAD83) AND MAY BE BROUGHT TO SURFACE BY APPLYING THE FOLLOWING COMBINED SCALE: 0.999865357370.
 - A ONE-FOOT RESERVE DEDICATED TO THE PUBLIC IN FEE AS A BUFFER SEPARATION BETWEEN THE SIDE OR END OF STREETS IN SUBDIVISION PLATS WHERE SUCH STREETS ADJUT ADJACENT ACREAGE TRACTS, THE CONDITIONS OF SUCH DEDICATION BEING THAT WHEN THE ADJACENT PROPERTY IS SUBDIVIDED BY A RECORDED PLAT, THE ONE-FOOT RESERVE SHALL THEREUPON BECOME BESTED IN THE PUBLIC FOR STREET RIGHT-OF-WAY PURPOSES AND THE FEE TITLE THERETO SHALL REVERT AND REVEST IN THE DEDICATOR, HIS HEIRS, ASSIGNS, OR SUCCESSORS.
 - SIDEWALKS SHALL BE BUILT OR CAUSED TO BE BUILT NOT LESS THAN 5 FEET IN WIDTH ON BOTH SIDES OF ALL DEDICATED RIGHT-OF-WAY WITHIN SAID PLAT AND ON THE CONTIGUOUS RIGHT-OF-WAY OF ALL PERIMETER ROADS SURROUNDING SAID PLAT, IN ACCORDANCE WITH A.D.A.
 - ALL DRAINAGE EASEMENTS TO BE KEPT CLEAR OF FENCES, BUILDINGS, VEGETATION AND OTHER OBSTRUCTIONS TO THE OPERATION AND MAINTENANCE OF THE DRAINAGE FACILITY.
 - ALL PROPERTY TO DRAIN INTO THE DRAINAGE EASEMENT ONLY THROUGH AN APPROVED STRUCTURE.
 - RESTRICTED RESERVE "A", "B" AND "C" TO BE MAINTAINED BY THE HOMEOWNERS ASSOCIATION TO BE ESTABLISHED BY DEED RESTRICTIONS AND COVENANTS.
 - RESTRICTED RESERVE "D" AND "E" TO BE MAINTAINED BY FORT BEND COUNTY MUNICIPAL UTILITY DISTRICT NO. 256.
 - SITE PLANS SHALL BE SUBMITTED TO FORT BEND COUNTY AND ANY OTHER APPLICABLE JURISDICTION FOR REVIEW AND APPROVAL TO OBTAIN A DEVELOPMENT PERMIT. DEVELOPMENT PERMITS AND ALL OTHER APPLICABLE PERMITS SHALL BE OBTAINED FROM FORT BEND COUNTY PRIOR TO BEGINNING CONSTRUCTION.
 - A MINIMUM DISTANCE OF TEN (10) FEET SHALL BE MAINTAINED BETWEEN RESIDENTIAL DWELLINGS.
 - THIS PLAT IS SUBJECT TO THAT CERTAIN GRANT OF MASTER TELECOMMUNICATION EASEMENT AS SET FORTH AND DEFINED BY INSTRUMENT RECORDED UNDER FORT BEND COUNTY CLERKS FILE NO. 2024101770.

MONARCH LANDING SECTION 4

A SUBDIVISION OF 64.151 ACRES OF LAND LOCATED IN THE H.&T.C. R.R. CO. SURVEY, ABSTRACT NO. 239 FORT BEND COUNTY, TEXAS

205 LOTS 4 BLOCKS 5 RESERVES
DATE: AUGUST, 2025 SCALE: 1" = 100'

OWNER
KL LB BUY 2 LLC,
A DELAWARE LIMITED LIABILITY COMPANY
681 GREENS PARKWAY, SUITE 200
HOUSTON, TEXAS 77067
(281) 874-8459

ENGINEER SURVEYOR

BLACKLINE ENGINEERING
1616 S. Voss, Suite 300
Houston, TX 77057
(832) 451-5959
Firm No. 14051
WWW.BLACKLINE-ENG.COM

S & V SURVEYING, INC.
PROFESSIONAL LAND SURVEYORS
2011 KRAHN ROAD SPRING, TEXAS 77388
OFFICE: (281) 353-2570 FAX: (281) 353-2407
TBPELS Firm No. 100247-00
www.svsurveying.com