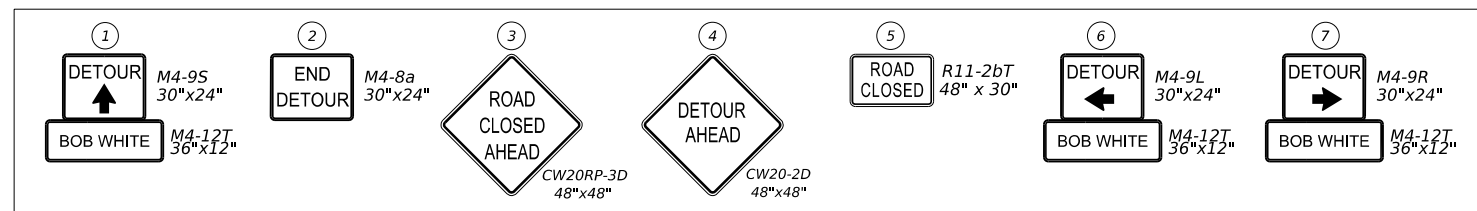
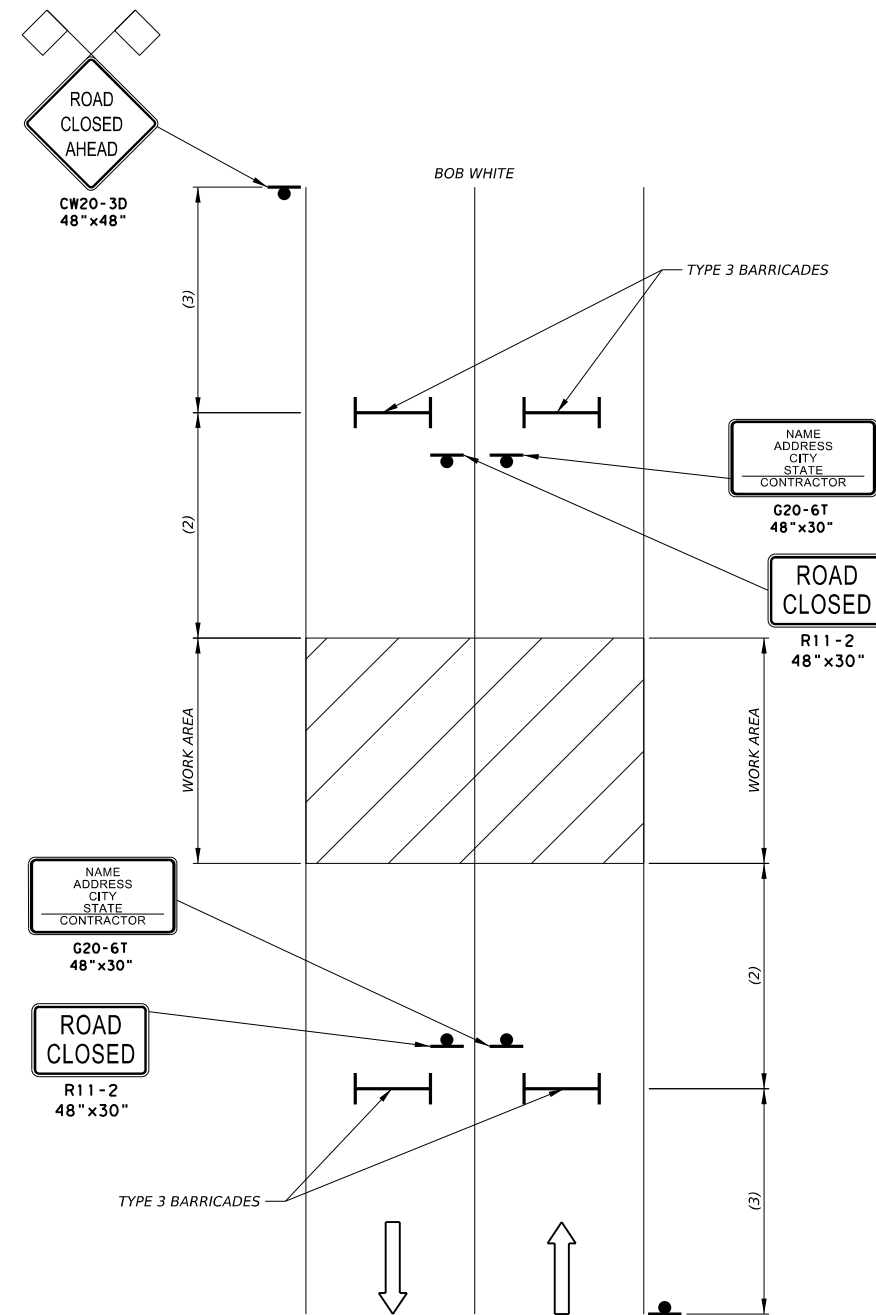
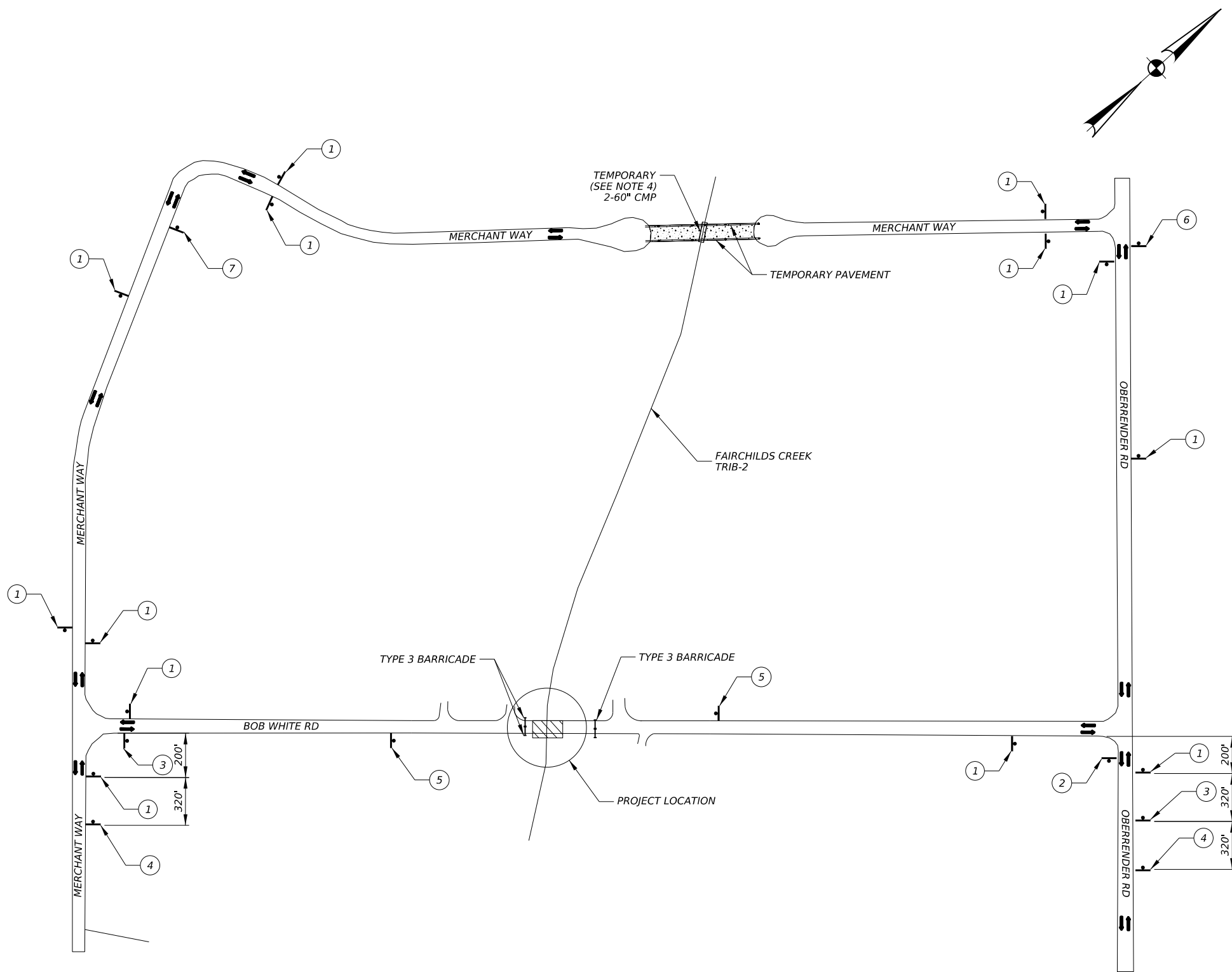


R:\121-fort bend county\121-2401_bob white bridge replacements\prod\3.2 cad\3.2.1 references\3.2.1.1 borders\fb-bdr_bob white.dgn



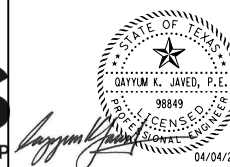
CONSTRUCTION SIGNING AT PROJECT LOCATION

NOTES:

1. BOB WHITE RD. WILL IS CLOSED TO THROUGH TRAFFIC UNTIL SUBSTANTIAL COMPLETION AS APPROVED BY THE COUNTY ENGINEER.
2. TYPE 3 BARRICADES TO BE PLACED IN A LOCATION THAT IS SATISFACTORY TO THE ENGINEER TO ALLOW EGRESS AND INGRESS FOR LOCAL PROPERTY OWNERS.
3. SEE BC SHEETS FOR SIGN SPACING.
4. THIS TEMPORARY CROSSING MAY BE COMPLETED IN ADVANCE OF PROJECT. ALL BID ITEMS FOR THIS CROSSING WILL BE PAID FOR UNDER OPTIONAL ADDITIONAL.

NO.	REVISIONS	DATE	NAME

FORT BEND COUNTY
ENGINEERING DEPARTMENT



PROJECT TITLE: BOB WHITE BRIDGE REPLACEMENT		FBCE STANDARD
DRAWN BY:	SHEET DESCRIPTION: TRAFFIC CONTROL PLAN	
SCALE: NTS	APPROVED BY:	SHEET NO: 6 / 88
DATE: 04/04/25		