



June 4, 2025

Fort Bend County Commissioners Court
401 Jackson Street
Richmond, TX 77469

RE: Major Thoroughfare Plan Amendment – Vicksburg Boulevard

Dear Commissioners Court,

We are submitting for your consideration and approval to amend the major thoroughfare plan of Fort Bend County to remove the projected alignment of Vicksburg Boulevard.

Please find attached to this letter, exhibits detailing the proposed revision to the current major thoroughfare plan.

Vicksburg Boulevard is classified as a major thoroughfare in eastern Fort Bend County. The current projection of Vicksburg Boulevard begins at the south right of way of McHard Road - F.M. 2234 and extends to the Parks Edge Boulevard round-about within the city limits of Missouri City within Precinct 2. Multiple subdivisions within Missouri City have been developed prohibiting the proposed alignment of Vicksburg Boulevard. Additionally, there are two existing tall media towers with multiple support stations, an existing drainage channel and an existing freshwater canal obstructing the proposed alignment of Vicksburg Boulevard.

Should you have any questions or require any additional information, please do not hesitate to contact us. Thank you for your consideration on this matter.

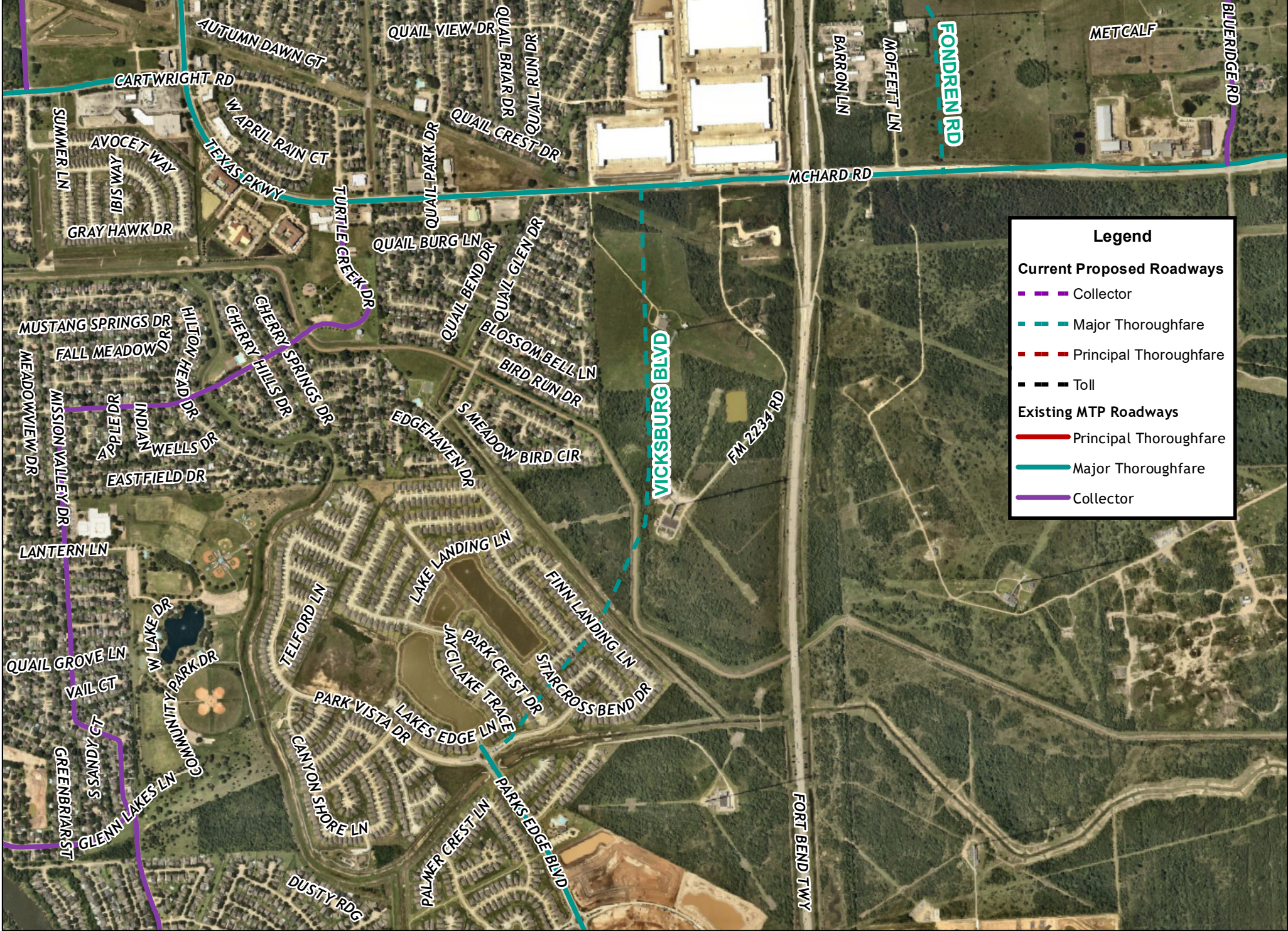
Sincerely,

A handwritten signature in blue ink, appearing to read "Gerald W. Grissom", written in a cursive style.

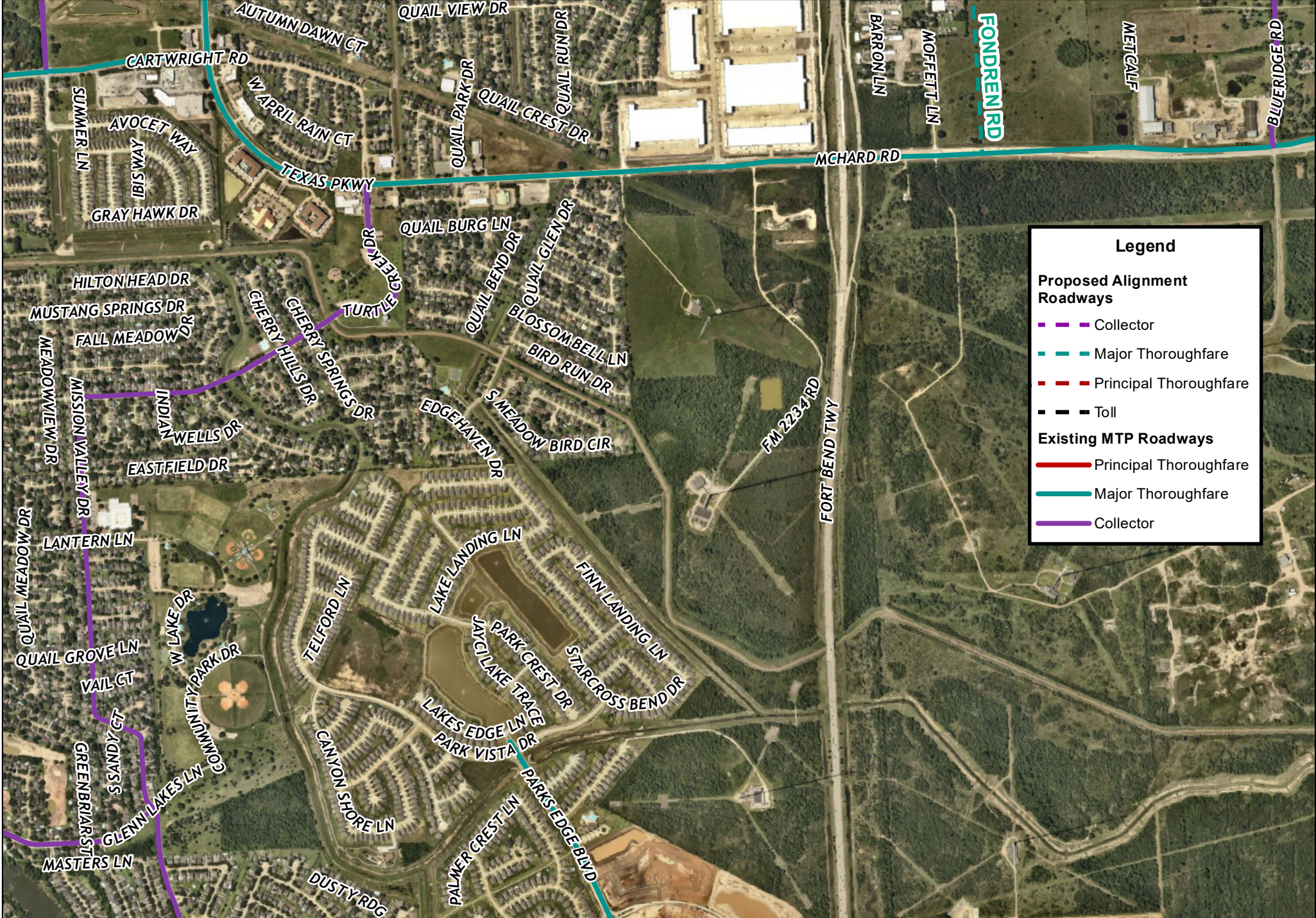
Gerald W. Grissom
Platting Team Leader
ggissom@bgeinc.com

MTP Proposed Amendment

ADOPTED/CURRENT PLAN

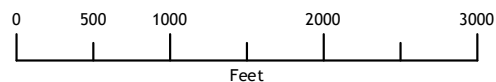


PROPOSED ALIGNMENT

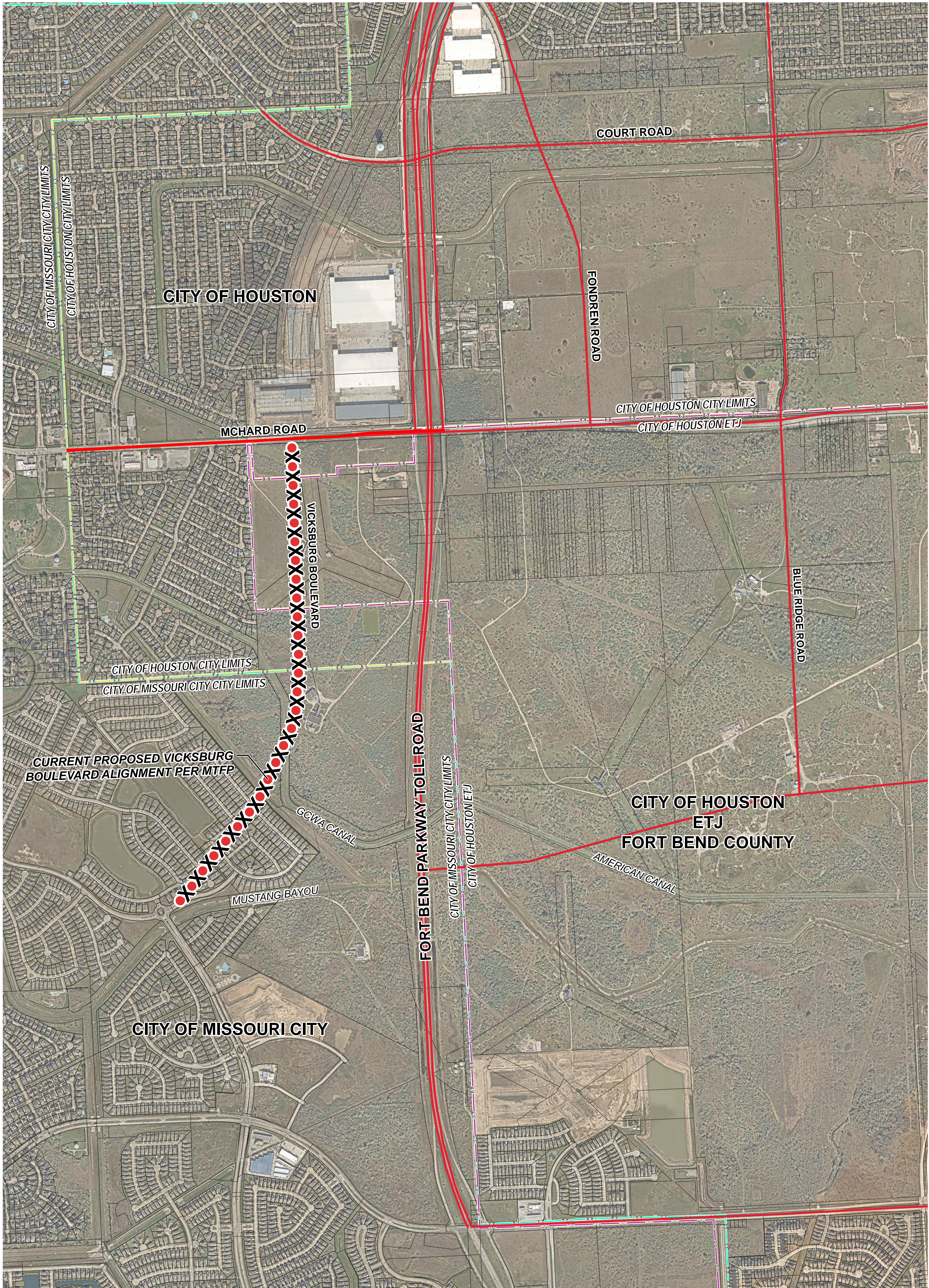


Map By:
Engineering GIS
June 2025

Major Thoroughfare Plan
Proposed Alignment Vicksburg Blvd



This Geographic Information Systems (GIS) Data is a public resource of general information. The information contained was generated from GIS data maintained by Fort Bend County and different sources and agencies. The County of Fort Bend makes no warranty, representation, or guarantee as to the content, sequence, accuracy, timeliness, or completeness of any of the spatial data or database information provided herein. The County of Fort Bend shall assume no liability for any errors, omissions, or inaccuracies in the information provided, regardless of how caused; or any decision made or action taken or not taken by any person relying on any information or data furnished within. If any errors are detected, please contact the GIS Division of Fort Bend County Engineering so they may be corrected.

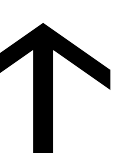


PROPOSED MTFP AMENDMENT EXHIBIT
VICKSBURG BOULEVARD

FORT BEND COUNTY, TEXAS

JUNE 03, 2025
 BGE #14852-00

BGE, Inc.
 10777 Westheimer, Suite 400
 Houston, TX 77042
 Tel: 281-558-8700
 www.bgeinc.com



THIS DRAWING IS A PICTORIAL REPRESENTATION FOR PRESENTATION PURPOSES ONLY AND IS SUBJECT TO CHANGE. FURTHER, SAID DRAWING IS A SCANNED IMAGE ONLY AND IS NOT FOR COMPUTATION OR CONSTRUCTION PURPOSES. THIS DRAWING MAY OR MAY NOT INCORPORATE INFORMATION AND/OR DATA PROVIDED TO BGE, INC. BY OTHER CONSULTANTS RELATIVE TO ENGINEERING AND DRAINAGE, FLOOD PLANS AND ENVIRONMENTAL ISSUES AND SHOULD NOT BE RELIED UPON FOR ANY PURPOSE. NO WARRANTIES, EXPRESS OR IMPLIED, CONCERNING THE ACTUAL DESIGN, LOCATION, AND CHARACTER OF THE FACILITIES SHOWN ON THIS MAP ARE INTENDED. ADDITIONALLY, NO WARRANTY IS MADE TO THE ACCURACY OF THE INFORMATION CONTAINED HEREIN ©2025 BGE, INC. ALL RIGHTS RESERVED.