



6330 West Loop South, Suite 150
Bellaire, Texas 77401
Tel: 713.777.5337
www.quiddity.com

June 24, 2025

Chelsea Goates, CFM
Fort Bend County Engineering
301 Jackson Street, Suite 401
Richmond, Texas 77469

Re: Request for Road Closure
A Myers Road

Dear Ms. Goates:

We are requesting the road closure of A Myers Road for construction of a storm sewer crossing to serve the Revera Development as part of the Revera Detention & Mass Grading construction plans (approved by Fort Bend County Engineering on 01/28/2025). The closure will be required east of the intersection of Benton Road and A Myers Road and west of the intersection of Berdett Road and A Myers Road. Construction will include removal and replacement of the existing asphalt road and subgrade to install a 78-inch storm sewer crossing. The existing asphalt roadway will be replaced with 3-inch thick Hot Mix Laid Asphaltic Concrete (HMAC) Type D, as per the approved construction plans. Message boards will be in place a minimum of 2 weeks in advance of the anticipated road closure.

The closure of A Myers Road is anticipated to commence July 14, 2025. Normal traffic flow is expected to resume once the storm sewer installation and asphalt road replacement is completed, inspected by Fort Bend County Engineering, and deemed substantially complete.

Please call if you have any questions or need any additional information.

Sincerely,

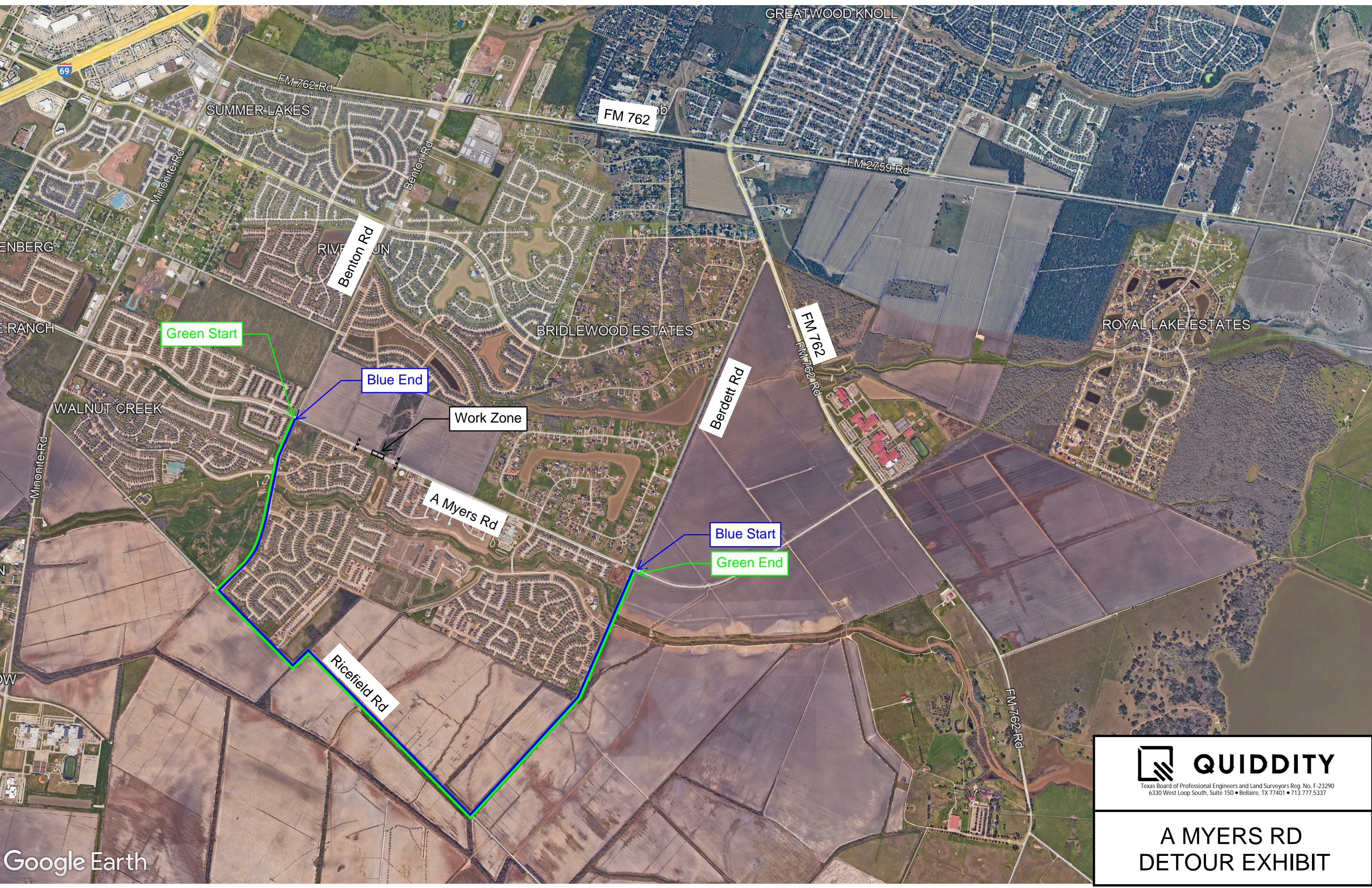
Bryan F. Aguirre, P.E.

BFA

K:\28688\28688-0006-01 Big Creek Mass Grading & Detention\Project Management\Correspondence\FBCE\A Myers Road Closure\Revera Detention & Mass Grading - A Myers Closure Request.docx

Enclosures

cc: Ms. Sandy Garza – Fort Bend County Engineering



Google Earth

**QUIDDITY**
Texas Board of Professional Engineers and Land Surveyors Reg. No. F-23290
6330 West Loop South, Suite 150 • Bellaire, TX 77401 • 713.777.5337

A MYERS RD
DETOUR EXHIBIT



LEGEND

(A) ROAD CLOSED
48" R5-1 48" x 30" R11-2 48" x 30"

(B) A MYERS RD
DETOUR
M4-9AL 30" x 30"

(C) A MYERS RD
DETOUR
M4-9AR 30" x 30"

(D) A MYERS RD
DETOUR
M4-9A 30" x 30"

(E) A MYERS RD
EASTBOUND
DETOUR
M4-9AL 30" x 30"

(F) A MYERS RD
WESTBOUND
DETOUR
M4-9AR 30" x 30"

(G) A MYERS RD
WESTBOUND
ROAD CLOSED TO THRU TRAFFIC
R11-4
DETOUR
M4-9AL 30" x 30"

(H) A MYERS RD
WESTBOUND
ROAD CLOSED TO THRU TRAFFIC
R11-4
DETOUR
M4-9A 30" x 30"

(I) A MYERS RD
EASTBOUND
ROAD CLOSED TO THRU TRAFFIC
R11-4
DETOUR
M4-9A 30" x 30"

(J) A MYERS RD
EASTBOUND
ROAD CLOSED TO THRU TRAFFIC
R11-4
DETOUR
M4-9AR 30" x 30"

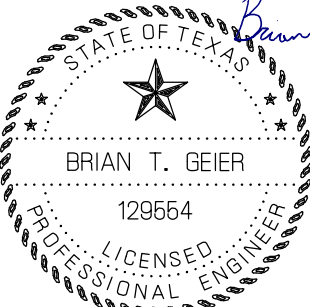
(K) DETOUR AHEAD
CW20-2 36" x 36"

(L) END DETOUR
M4-8a 24" x 18"



QUIDDITY
Texas Board of Professional Engineers and Land Surveyors Reg. No. F-23290
6330 West Loop South, Suite 150 • Bellaire, TX 77401 • 713.777.5337

A MYERS ROAD
DETOUR PLAN



Brian T. Geier
6/11/2025
BRIAN T. GEIER
129554
LICENSED PROFESSIONAL ENGINEER