



June 24, 2025

Ms. Chelsea Goates
Fort Bend County Engineering
301 Jackson St., Suite 401
Richmond, TX 77469
281-633-7500

Re: Amandera – Ph 1 Detention/Mitigation and Outfall Channel (BGE Project No. 13545-00)
Fort Bend County MUD No. 210
Detour Request Letter for Beadle Lane between FM 723 and Stratman Road

Dear Ms. Chelsea Goates:

BGE, Inc., on behalf of Fort Bend County Municipal Utility District No. 210, are submitting the detour plan to allow closure of Beadle Lane between the period of **July 21, 2025 through project completion**. With the construction of the “Amandera Phase 1 Detention/Mitigation Basins and Outfall Channel” project, there will be continued construction activities on and around Beadle Lane in the area designated on attached detour plan and we believe it is in the best interest for public safety to close the high-speed two-lane road for a year’s period. Such construction activities include the installation of culverts across Beadle Lane and constant crossing of the road while hauling excavated material with heavy equipment.

BGE, Inc. is also working with Fort Bend County Engineering and Drainage District on the review and approval of construction plans titled, “Amandera Parkway and Beadle Lane Street Dedication,” that will include the reconstruction of approximately 3,200 linear feet of Beadle Lane. The construction of this project is anticipated to begin in September 2025 and be complete and accepted by Fort Bend County in July 2026.

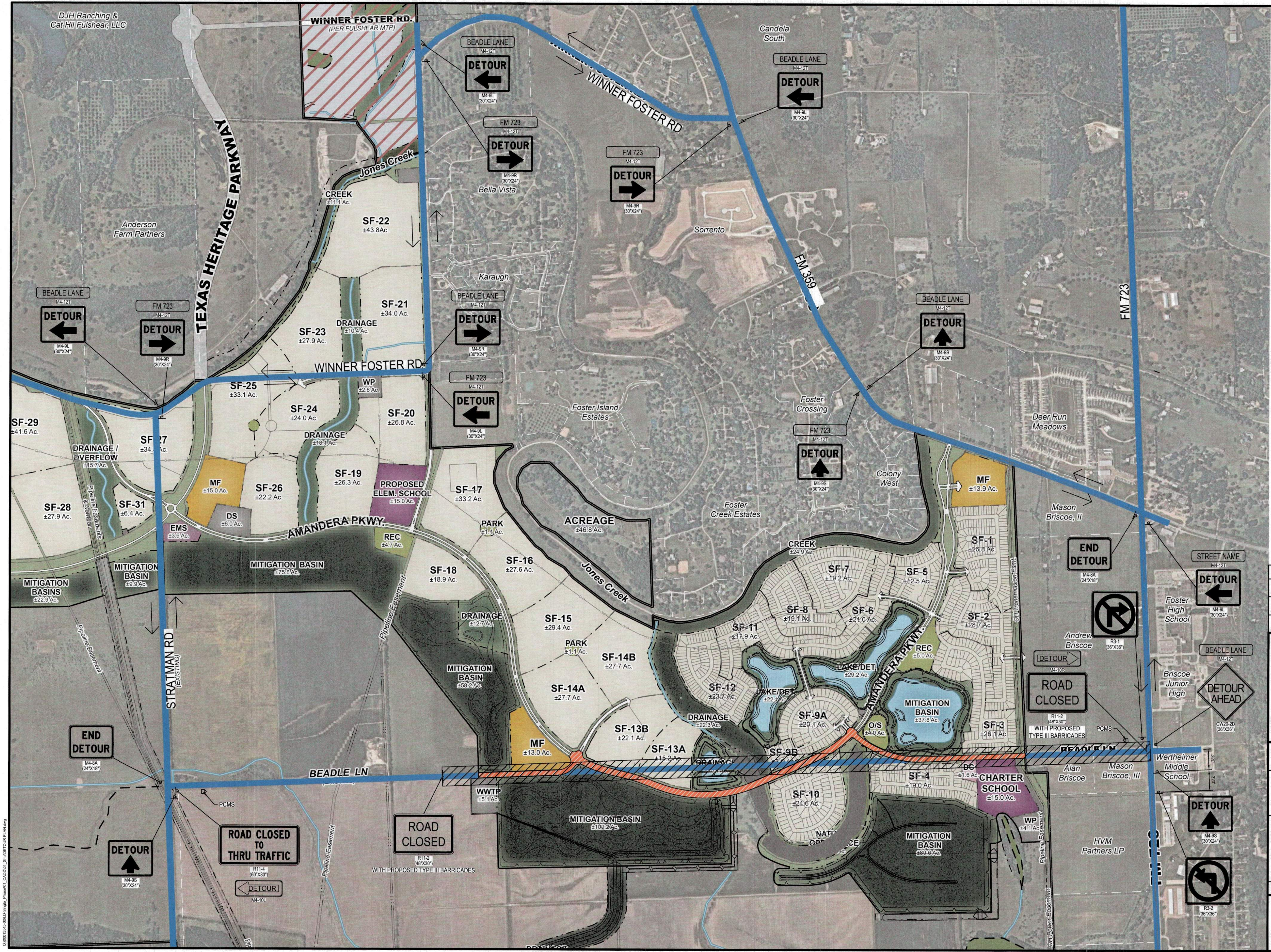
If you have any questions, please feel free to email me at DTiffany@bgeinc.com or call at 832-913-4115.

Sincerely,

A handwritten signature in blue ink, appearing to read "Drew Tiffany", is written over a blue circular stamp.

Drew Tiffany, P.E.
Sr. Project Manager
BGE, Inc.

CC: Rick Staigle, Fort Bend County



LEGEND

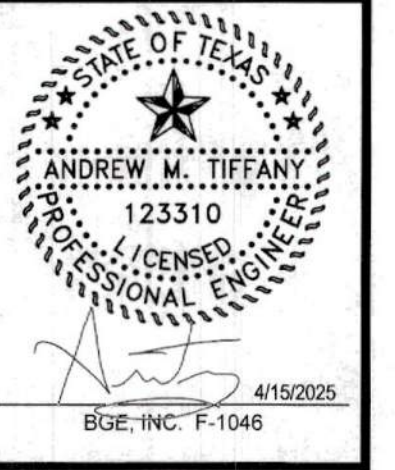
- PROPOSED SIGN
- PROPOSED TYPE III BARRICADE
- EXISTING ROAD
- ROAD CLOSURE
- WORK AREA
- DETOUR DIRECTION



REV. NO.	DATE	DESCRIPTION	P.E. APPR.
3			
2			
1			



BGE, Inc.
10777 Westheimer, Suite 400
Houston, TX 77042
Tel: 281-558-8700 • www.bgeinc.com
TBPE Registration No. F-1046



FORT BEND COUNTY M.U.D. NO. 210

AMANDERA-PH 1
DETENTION/MITIGATION AND
OUTFALL CHANNEL

DETOUR PLAN

JOB NUMBER: 13545-00	
SUBMITTED BY: BGE, INC.	DESIGNED BY: JG
SCALE: N/A	DRAWN BY: SL
DATE: APRIL 2025	SHEET NO. 45 OF 50 SHEETS
SURVEY BY: BGE, INC.	CITY DWG NO:
F.B. NO:	

D:\30013545\BOLD Signs_Plan\001 CAD\01_30013545\PLAN.dwg