

Title VI Program and Compliance Report

Public Transportation Department Fort Bend County, Texas



December 2009
Revised March 2010
Revised March 2013
Revised March 2016
Revised March 2019
Revised March 2022

Revised April 2025

Approved by
Commissioner's Court
on April 22, 2025

This Page Intentionally Left Blank

TABLE OF CONTENTS

Table of Contents

INTRODUCTION	1
SECTION 1. FTA GUIDANCE AND INSTRUCTIONS	4
<i>GENERAL REQUIREMENTS</i>	4
<i>REQUIREMENTS FOR CONSTRUCTION PROJECTS</i>	5
SECTION 2. OVERVIEW OF FORT BEND COUNTY	8
<i>POPULATION DEMOGRAPHICS IN FORT BEND COUNTY</i>	8
<i>FORT BEND COUNTY PUBLIC TRANSPORTATION DEPARTMENT</i>	11
SECTION 3. ACCESS TO TRANSIT FOR PERSONS WITH LIMITED ENGLISH PROFICIENCY	14
<i>LANGUAGE SPOKEN AT HOME</i>	14
SECTION 4. TITLE VI POLICIES AND PROCEDURES	17
<i>TITLE VI STATEMENT OF POLICY FOR PUBLIC TRANSPORTATION</i>	17
<i>FILING A DISCRIMINATION COMPLAINT</i>	18
<i>TRACKING AND INVESTIGATING TITLE VI COMPLAINTS</i>	19
<i>PUBLIC NOTICE</i>	20
SECTION 5. PUBLIC INFORMATION ABOUT TRANSIT SERVICES AND LAP PLAN .	22
<i>SUMMARY OF CURRENT PUBLIC OUTREACH AND INVOLVEMENT</i>	22
<i>PUBLIC PARTICIPATION PLAN</i>	23
<i>ENHANCEMENTS FOR PUBLIC OUTREACH TO TITLE VI POPULATIONS</i>	23
<i>FOUR FACTOR ANALYSIS</i>	24
<i>LANGUAGE ASSISTANCE PLAN (LAP)</i>	25
<i>TRIENNIAL REPORTS</i>	28
SECTION 6. SERVICES STANDARDS AND POLICIES FOR TRANSIT IN LARGE REFERENCES.....	36
APPENDIX A – O&M FACILITY & WESTPARK PARK AND RIDE ADVANCE PLANNING REPORT	37
APPENDIX B – TITLE VI DEMOGRAPHIC ANALYSIS.....	85
APPENDIX C – LANGUAGE SPOKEN AT HOME IN FORT BEND COUNTY.....	89
APPENDIX D – TITLE VI COMPLAINT PROCEDURES AND COMPLAINT FORM	94
APPENDIX E – LETTER OF NO COMPLAINTS.....	103
APPENDIX F – PRESENTATIONS AND OUTREACH.....	105
APPENDIX G – ADVISORY COMMITTEE MEMBERSHIP	118
APPENDIX H – FORT BEND COUNTY PUBLIC TRANSPORTATION SUBRECIPIENTS	121
APPENDIX I –PUBLIC PARTICIPATION PROGRAM.....	123
APPENDIX J –PUBLIC NOTICE	134
APPENDIX K – COMMISSIONER’S COURT MINUTES	135

LIST OF TABLES

Table 1. Population in Fort Bend County 8

Table 2. Population of Fort Bend County by Race and Ethnicity9

Table 3. Incorporated Cities in Fort Bend County..... 10

Table 4. Languages Other than English Spoken at Home 14

INTRODUCTION

Title VI of the Civil Rights Act of 1964 is the federal law that protects individuals and groups from discrimination on the basis of race, color, and national origin in programs and activities that receive federal financial assistance. Title VI established a standard that outlawed discrimination in the conduct of all federal activities. Another concern was that high and adverse environmental impacts of private or governmental actions might fall disproportionately on populations protected by Title VI. With this concern in mind, Executive Order 12898 was issued in 1994 to establish requirements for *environmental justice* to ensure that everyone within the U.S. receives equal protection under the law. Executive Order 12898 directed each federal agency to review its procedures and to make environmental justice part of its mission by identifying and addressing the effect of all programs, policies, and activities on minority populations.

All programs and activities of entities that receive federal financial assistance must also comply with Executive Order 13166 “Improving Access to Services for Persons with Limited English Proficiency.” All recipients of federal funds must take reasonable steps to ensure that limited English proficient (LEP) persons have meaningful access to its programs, services, and information provided. Persons who do not speak English as their primary language and have a limited ability to read, speak, write, or understand English may be considered LEP.

The U.S. Department of Transportation (DOT) issued Title VI Regulations (49 CFR part 21) to ensure that no person is excluded from or denied the benefits of, or otherwise subjected to discrimination, on the grounds of race, color, or national origin, under any program or activity receiving federal financial assistance from the DOT. The Federal Transit Administration (FTA) is an agency within the DOT that provides financial and technical assistance to state and local public transit systems. FTA Circular 4702.1B provides recipients of FTA financial assistance with guidance and instructions necessary to carry out the DOT Title VI Regulations and to integrate into their programs and activities principles of environmental justice and access to services for persons with limited English proficiency.

The Fort Bend County Public Transportation Department is a recipient of federal funds from the FTA and must follow the guidance included in FTA Circular 4702.1B. This report serves two purposes:

- 1) to provide an assessment of current compliance by Fort Bend County with the requirements of Title VI pursuant to FTA Circular 4702.1B; and
- 2) to establish procedures for future Title VI compliance.

This document is organized into six sections following this introduction. The material covered in each section is described as follows:

- **Section 1** provides an overview for the guidance and instructions in FTA Circular 4702.1B.
- **Section 2** includes information about the population demographics for Fort Bend County and highlights the transit services and programs sponsored by the Fort Bend County Public Transportation Department.

- **Section 3** looks more specifically at what languages other than English are spoken at home by Fort Bend County residents and gauges the extent to which these populations access transit services.
- **Section 4** presents a statement of policy for compliance with Title VI, instructions for how a member of the public may file a discrimination complaint, and procedures for tracking and investigating Title VI complaints.
- **Section 5** documents the types of public information about transit services currently provided by the Public Transportation Department and summarizes public outreach and involvement activities. The LEP Plan is included in Section 5.
- **Section 6** provides system-wide service standards and policies in compliance with the FTA Circular 4702.1B program-specific guidance for recipients that provide transit service in a large urban area.

This Page Intentionally Left Blank

SECTION 1. FTA GUIDANCE AND INSTRUCTIONS

The purpose of this section is to provide an overview of the guidance and instructions in FTA Circular 4702.1B. The circular applies to all recipients of FTA financial assistance. Compliance with the guidance and instructions is addressed in Sections 3 through 7 of this document.

OBJECTIVES

Consistent with DOT Title VI Regulations and the principles of environmental justice and access to services for persons with limited English proficiency, the FTA Circular 4702.1B sets forth the following objectives:

- Ensure that the level and quality of transportation service is provided without regard to race, color, or national origin;
- Identify and address, as appropriate, disproportionately high and adverse human health and environmental effects, including social and economic effects of programs and activities on minority populations and low-income populations;
- Promote the full and fair participation of all affected populations in transportation decision making;
- Prevent the denial, reduction, or delay in benefits related to programs and activities that benefit minority populations or low-income populations; and
- Ensure meaningful access to programs and activities by persons with limited English proficiency.

GENERAL REQUIREMENTS

The Fort Bend County Public Transportation Department must follow FTA Circular 4702.1B general requirements to ensure that programs, policies, and activities comply with DOT Title VI Regulations. These requirements include:

- Submit an annual Title VI assurance as part of the annual Certification and Assurance to FTA;
- Notify beneficiaries of protection under Title VI;
- Develop Title VI complaint procedures for investigating and tracking Title VI complaints and make procedures for filing a complaint available to members of the public;
- Prepare and maintain a list of any active Title VI investigations, complaints, and lawsuits conducted by entities other than FTA; and
- Ensure meaningful access to LEP persons by developing and carrying out a language implementation plan.

FTA requires the Fort Bend County Public Transportation Department to prepare and submit a Title VI Program to FTA every three years. As described in 49 CFR Part 21, the County's Title VI program is required to include the following information:

- Title VI Notice to the Public
- Title VI complaint procedures for investigating and tracking Title VI complaints and make procedures for filing a complaint available to members of the public; and
- Title VI Complaint Form; and
- A list of any active Title VI investigations, complaints, and lawsuits conducted by entities other than FTA; and
- Public Participation Plan; and
- Language Assistance Plan for providing language assistance to persons with limited English proficiency (LEP); and
- A table depicting the membership of non-elected committees and councils, the membership of which is selected by the recipient, broken down by race, and a description of the process the agency uses to encourage the participation of minorities on such committees; and
- A description of how the agency monitors its subrecipients for compliance with Title VI, and schedule of subrecipient Title VI Program submissions; and
- A Title VI equity analysis if the recipient has constructed a facility, such as a vehicle storage facility, maintenance facility, operation center, etc.; and
- A copy of board meeting minutes, resolution, or other appropriate documentation showing the board of directors or appropriate governing entity or officials responsible for policy decisions reviewed and approved the Title VI Program.

REQUIREMENTS FOR CONSTRUCTION PROJECTS

Recipients of Federal Transit Administration financial assistance are required to conduct a Title VI equity analysis during the planning phase of all construction projects (i.e. vehicle storage, operations, and maintenance), and during the analysis required by the National Environmental Policy Act analysis. Since Fort Bend County Public Transportation's last Title VI update (March 2022) Fort Bend County Transit has continued with the planning phase and begun construction of the Westpark Park and Ride facility. Appendix A represents the project's Advanced Planning Report including Title VI relevant considerations.

National Environmental Protection Act Background

The primary law governing the FTA environmental protection process is the National Environmental Policy Act (NEPA) of 1969 (42 U.S.C. 4321 et seq.), as amended. Many different federal laws, rules, and regulations govern environmental review of federally assisted mass transportation projects. NEPA establishes protection of the environment as a national priority and mandates that environmental impacts must be considered before any federal action likely to significantly affect the environment is undertaken. Other special purpose statutes and procedures may apply as well, depending on specific circumstances, e.g., protective measures for historic properties, wetlands, floodplains, etc. If related environmental review requirements apply, they are to be undertaken as part of the NEPA compliance process.

The process for complying with NEPA and federal surface transportation statutes is defined in the joint Federal Highway Administration/ FTA Environmental Impact and Related Procedures (23 C.F.R 771). The regulation sets forth the agencies' policy of combining all environmental

analyses and reviews into a single process. It defines the roles and responsibilities of FTA and its grant applicants in preparing documents, and in managing the environmental process within the various project development phases.

Applicants intending to apply for federal transit funding should notify FTA at the time a project concept is identified. Once the applicant has furnished sufficient information and documentation, FTA will advise the applicant of the probable class of action and the related level of documentation required in the NEPA process. Recipients and sub-recipients of federal funding for construction projects should integrate an environmental justice analysis into the NEPA documentation. Recipients are not required to conduct environmental justice analyses of projects where NEPA documentation is not required.

This Page Intentionally Left Blank

SECTION 2. OVERVIEW OF FORT BEND COUNTY

This section provides an overview of the population demographics for Fort Bend County and highlights the transit services provided by the Fort Bend County Public Transportation Department.

POPULATION DEMOGRAPHICS IN FORT BEND COUNTY

Fort Bend County is located along the Gulf Coast region of Texas, within the Houston-The Woodlands-Sugar Land metropolitan area, the fifth-largest metropolitan area in the United States with a population of approximately 7.1 million. According to the US Census in 2020, Fort Bend County's population was estimated at 822,779, which represents 11.55 percent of the total population in the metropolitan area.

Population Growth

The population of Fort Bend County has grown significantly since 1990, as shown in Table 1. Since 1990, the County has grown from 225,421 to 822,779 making it one of the fastest growing counties in the nation. The Houston-Galveston Area Council (H-GAC) further estimates that Fort Bend County's population will continue to grow, adding just over 200,000 people by the year 2030.

Table 1. Population in Fort Bend County.

Year	Population	Percent Growth
1990 ^A	225,421	-
2000 ^A	354,452	57%
2010 ^A	585,375	65%
2020 ^A	822,779	41%
2030 ^B	1,042,522	27%

Sources:

^A U.S. Census

^B H-GAC Regional Growth Forecast (2017)

Urban and Rural Fort Bend County

Most of the population of Fort Bend County falls within the Houston urbanized area. In 2010, the Fort Bend County population was 585,375, and 557,277, or 95.2 percent were in the urbanized area. The remaining population 28,098 or 4.8 percent was in rural Fort Bend County. In 2020, 822,779 residents (96.6 percent) of Fort Bend County reside within the Houston urbanized area. According to the U.S. Census Bureau, the county has a total area of 861.5 square miles and is the 181st largest county in Texas by total area. The average population density was 679.5 persons per square mile as of the 2010 Census increasing to 954.8 persons per square mile in 2020, according to the 2020 US Census. Geographically, large portions of the county are rural; however, cities are growing rapidly.

Diversity

Fort Bend County is one of the most diverse counties in the United States as reflected in racial and ethnic population demographics represented below in Table 2.

Table 2. Population of Fort Bend County by Race and Ethnicity.

<i>Race and Ethnic Group</i>	<i>2017</i>		<i>2020</i>	
	<i>Population</i>	<i>Percent</i>	<i>Population</i>	<i>Percent</i>
Total Population	711,421		822,779	
Hispanic or Latino	171,949	24.17%	198,580	24.14%
Not Hispanic or Latino	539,472	75.83%	624,199	75.86%
White alone	244,43	34.36%	243,726	29.62%
Black or African American alone	143,86	20.22%	167,964	20.41%
Asian alone	136,74	19.22%	181,522	20.06%
Two or more races, not Hispanic or Latino	11,867	1.67%	23,901	2.90%
American Indian and Alaska Native alone	1,351	0.19%	3,862	0.47%
Some Other Race alone	1,091	0.15%	3,827	0.47%
Native Hawaiian and Other Pacific Islander alone	117	0.02%	152	0.02%

*Source: 2020 U.S. Census
2017 ACS 5-Year Estimate*

Incorporated Cities

Eighteen incorporated cities fall within the boundaries of Fort Bend County.¹ Table 3 identifies the cities and presents the population and growth from 2010 to 2020. The remaining population in Fort Bend County resides in unincorporated areas of the county or in the small segments of the City of Houston that exist within Fort Bend County.

¹ A small portion of the City of Houston falls within Fort Bend County, however this data is not included in Table 3.

Table 3. Incorporated Cities in Fort Bend County

City	2010 Population	2020 Population	Percent Growth
Arcola	1,642	1,656	.85%
Beasley	641	641	.0%
Fairchilds	763	1,415	85.5%
Fulshear	1,134	16,856	1,387.4%
Katy	14,102	21,894	55.3%
Kendleton	380	586	54.2%
Meadows Place	4,767	4,767	.0%
Missouri City	67,358	74,259	10.2%
Needville	2,823	3,089	9.4%
Orchard	352	352	.0%
Pearland	91,252	125,828	37.9%
Pleak	1,044	1,815	73.9%
Richmond	11,679	11,627	-0.19%
Rosenberg	30,618	38,282	25%
Simonton	814	647	-20.52%
Stafford	17,693	17,666	-0.15%
Sugar Land	78,817	111,026	40.9%
Weston Lakes	2,226	3,853	73.1%

Source: U.S. Census

Poverty

Under the federal guidelines for environmental justice, low-income population means a person whose median household income is at or below the poverty guidelines. According to the 2020 census data, 7.4 percent of the total population in Fort Bend County were living below the poverty level. The poverty level in Fort Bend County is below the state of Texas (14.67 percent) and Harris County (15.1 percent).

Older Adults and Persons with a Disability

The focus of federal Title VI regulations is not on demographics of age and disability. However, the Fort Bend County Public Transportation Department does develop services that are responsive to the needs of older adults (persons age 60 and over) and persons with a disability.

Approximately 16.8 percent of all persons residing in Fort Bend County in 2020 were 60 years of age or older. According to the 2020 ACS 5-Year Estimate, approximately 11.1 percent of Fort Bend County's population is 65 years of age or older. This compares with the over 60 population for the state of Texas at approximately 17.8 percent and Harris County at approximately 15.5 percent.

FORT BEND COUNTY PUBLIC TRANSPORTATION DEPARTMENT

The Fort Bend County Public Transportation Department is the public transit provider within Fort Bend County. The Public Transportation Department provides two transit services/programs: demand response transit service and commuter transit service.

Demand Response Transit Service. Fort Bend County offers Demand Response transit services to all citizens of Fort Bend County. Demand Response transit service only serves origins/destinations in Fort Bend County. In order to schedule or cancel a ride, a rider may call 866-751-TRIP between the hours of 8:00 a.m. and 4:30 p.m. Monday thru Friday (excluding Fort Bend County holidays) and select option 2. Reservations can be made 10 days or up to one (1) business day in advance of the appointment time. Rides are scheduled for first destination drop-off by 8:00 a.m. and the last pick-up will be no later than 5:00 p.m. Rides will be accepted on a “time and space” available basis. Trip fares are \$1.00 per person each way. Passengers must be ready 15 minutes before scheduled pick up time; and 15 minutes after the scheduled pick up time. This is a curb-to-curb service.

Commuter Transit Service. Fort Bend County operates commuter bus service to four major employment centers in Harris County. The service consists of three bus routes, one to Greenway Plaza, which includes a Galleria transfer, one to the Texas Medical Center, and one to Downtown Houston. Park-and-Rides are located at the University of Houston Sugar Land campus at University Boulevard and US 59, the AMC Movie Theatre on Town Center Boulevard near First Colony Mall, and the Fort Bend County Fairgrounds near State Highway 36 and Fairgrounds Road. The Greenway Plaza route offers a connection to the Metropolitan Transit Authority (METRO) West Bellfort Park & Ride. Fort Bend commuter service runs Monday through Friday (excluding Fort Bend County holidays) during peak commuter periods. Buses leave the park and ride lots between 4:30 a.m. and 10:00 a.m. and return from the activity centers between 3:15 p.m. and 8:40 p.m. at 15 to 20 minute intervals. A midday service is also available for our TMC and Downtown service from 11:05 a.m. through 1:40 p.m. Commuter fare varies from \$1.00 to \$4.00 each way depending on the origin and destination.

Figure 1 presents the locations for regional public transportation services from Fort Bend County to destinations in Harris County. The regional destinations include Greenway Plaza, the Texas Medical Center, Downtown, Lower Uptown Transit Center, and METRO West Bellfort Park & Ride for Fort Bend Commuter Service.

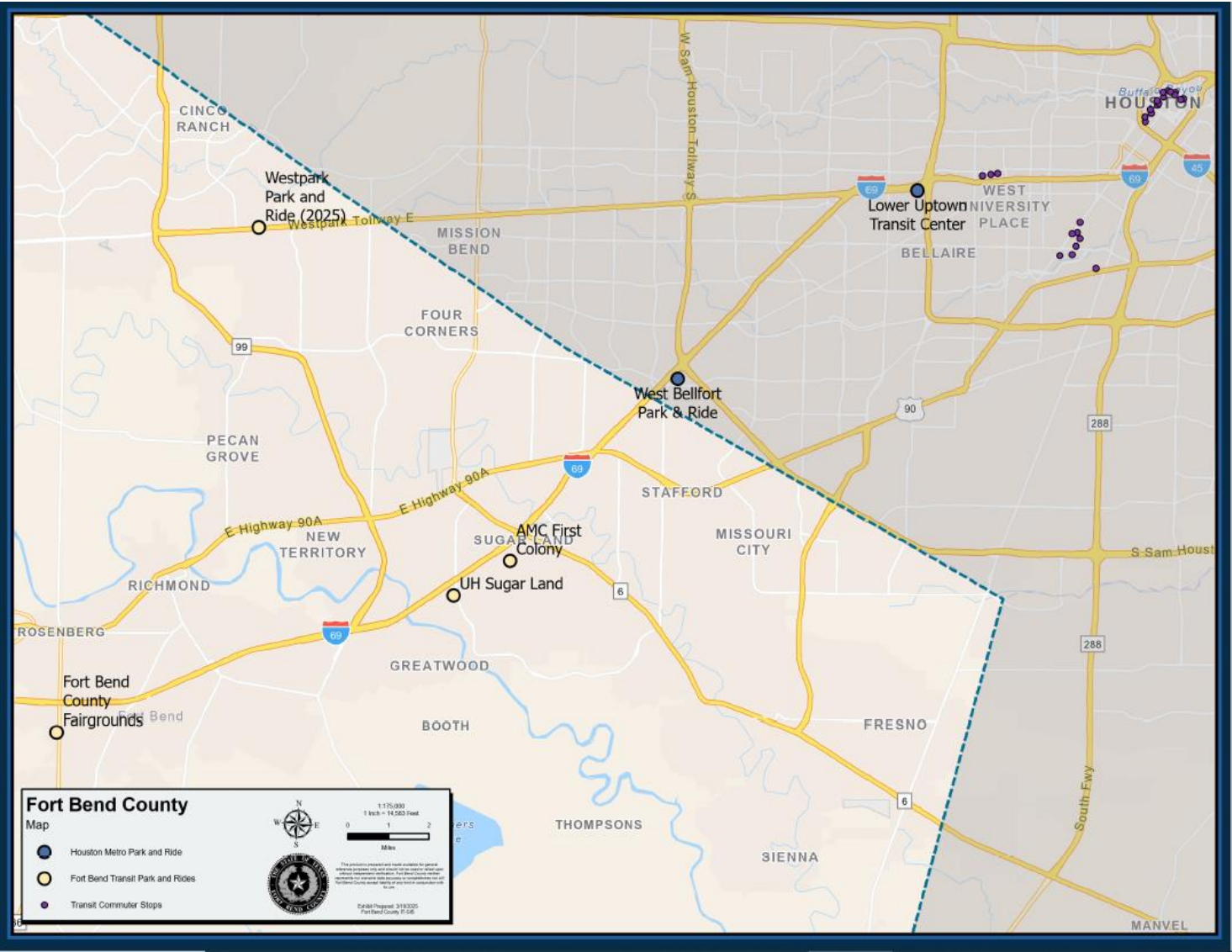


Figure 1. Fort Bend County Public Transportation Regional Transit Destination

This Page Intentionally Left Blank

SECTION 3. ACCESS TO TRANSIT FOR PERSONS WITH LIMITED ENGLISH PROFICIENCY

In previous statistical analyses of demographic characteristics, Fort Bend County identified the concentrations of population that have limited English proficiency.

The purpose of this section is to look more specifically at what languages other than English are spoken at home by Fort Bend County residents and to gauge the extent to which these populations may access transit services. The analysis will help the Fort Bend County Public Transportation Department to develop and carry out a language implementation plan.

LANGUAGE SPOKEN AT HOME

To determine the current language/translation needs of the Fort Bend County population at the countywide level, 2023 ACS Census data is used. This data is reported by census tract as households in which a language other than English is spoken at home. A benefit of looking at languages spoken at home is to identify the languages that are most familiar to a person whose nation of origin is not the United States. This information will serve as guidance for Fort Bend County to provide language assistance for growing segments of the population.

The 2023 ACS Census data documents 13 language categories at the household level to present data on the number of households that speak a language and the number of those households that identify as limited English-speaking households. Table 4 presents each language category and the number of households identified for each. As shown in Table 4, Spanish is the language spoken at home by the largest percent of households—nearly 19 percent—after English.

Table 4. Languages Other than English Spoken at Home.

Language	Households	% of Total Households
Fort Bend County	281,259	100%
English only	153,044	54.41%
Spanish	53,335	18.96%
Other Indo-European languages	22,066	7.85%
Chinese (incl. Mandarin, Cantonese)	12,197	4.34%
Other Asian and Pacific Island languages	9,937	3.53%
Other and unspecified languages	8,692	3.09%
Vietnamese	7,945	2.82%
Tagalog (incl. Filipino)	4,296	1.53%
Arabic	3,833	1.36%
Russian, Polish, or other Slavic languages	1,711	0.61%
French, Haitian, or Cajun	1,845	1.79%
Korean	1,196	0.43%
German or other West Germanic languages	1,162	0.41%
<i>Source: U.S. Census</i>		

Limited English Proficiency

According to the 2010 and 2020 census data, Fort Bend County has nine (9) languages other than English spoken at home by at least one thousand (1,000) Fort Bend County LEP residents. These languages are as follows: Spanish, Vietnamese, Chinese, Urdu, Malayalam, Tagalog, Gujarati, Hindi, and Arabic.

This Page Intentionally Left Blank

SECTION 4. TITLE VI POLICIES AND PROCEDURES

According to the guidance provided by FTA Circular 4702.1B, the Fort Bend County Public Transportation Department must ensure that programs, policies, and activities comply with DOT Title VI Regulations.

The purpose of this section is to present a statement of policy for compliance with Title VI, instructions for how a member of the public may file a discrimination complaint and procedures for tracking and investigating Title VI complaints. The Public Transportation Department has a responsibility to provide public notice to the beneficiaries of its public transportation services of protection under Title VI.

TITLE VI STATEMENT OF POLICY FOR PUBLIC TRANSPORTATION

Fort Bend County is committed to a policy of non-discrimination in the conduct of its business, including the Title VI responsibility to deliver equitable and accessible transportation services. Fort Bend County officially formed the Public Transportation Department in June 2005 to provide residents with safe and efficient public transportation services while maintaining service quality and customer satisfaction.

The Public Transportation Department recognizes its responsibility to the Fort Bend County community in which it operates and to the society it serves. The Public Transportation Department will utilize its best efforts to assure that no person shall, on the grounds of race, color, or national origin, be excluded from participation in, be denied the benefits of, or be subjected to discrimination under the Fort Bend County program of transit service delivery and related benefits. Further, the Public Transportation Department will utilize best efforts to provide equitable and accessible public transportation services to persons of low income and persons with limited English proficiency.

In order to comply with the Title VI requirements, the Public Transportation Department strives to accomplish the following objectives:

- Ensure that the level and quality of transportation service is provided without regard to race, color or national origin;
- Identify and address, as appropriate, disproportionately high and adverse human health and environmental effects, including social and economic effects of programs and activities on minority populations and low-income populations;
- Promote the full and fair participation of all affected populations in transportation decision making;
- Prevent the denial, reduction or delay in benefits related to programs and activities that benefit minority populations or low-income populations; and
- Ensure meaningful access to programs and activities by persons with limited English proficiency.

The responsibility for carrying out Fort Bend County's commitment to Title VI responsibilities rests with the Director of the Public Transportation Department. All managers, supervisors, and

employees in the Public Transportation Department share in the responsibility for making the Title VI Program a success.

Fort Bend County is committed to safeguarding against discrimination in its provision of public transportation services. Any person who feels he or she may have been discriminated against is encouraged to report in writing such a violation to the Fort Bend County within 180 days of the alleged discrimination. Additional information concerning the Fort Bend County Title VI obligations and the complaint procedure can be found by calling (281) 633-7433 or on the county's website www.FBCTransit.org.

FILING A DISCRIMINATION COMPLAINT

The responsibility for carrying out Fort Bend County's commitment to Title VI responsibilities rests with the Director of the Public Transportation Department. All managers, supervisors, and employees in the Public Transportation Department share in the responsibility for making the Title VI Program a success.

Any person who feels he or she may have been discriminated against is encouraged to report in writing such a violation to the Fort Bend County Public Transportation Department within 180 days of the alleged discrimination. If the individual believes that he/she has been excluded from participation in, denied the benefits of, or subjected to discrimination based on race, color, or national origin under Fort Bend County's Public Transportation Department programs for transit service delivery or related benefits, the individual may file a complaint with the Fort Bend County Public Transportation Department:

- Mail to the Fort Bend County Public Transportation Department, Civil Rights Officer, 301 Jackson Street, Richmond, TX 77469;
- Telephone (281) 633-7433;
- Fax (832) 471-1843; or
- Email at transit@fbctx.gov

Complaints may also be filed with the following organization no later than 180 days after the date of the alleged discrimination:

Federal Transit Administration's Office of Civil Rights
Attention: Title VI Program Coordinator
East Building, 5th Floor - TCR
1200 New Jersey Ave., SE
Washington, DC 20590
202-366-4018
http://www.fta.dot.gov/civilrights/title6/civil_rights_5104.html

Appendix D of this report provides a copy of the complaint form. Comments can be submitted in a format other than the complaint form. If the complaint is filed verbally, the information will be documented in writing by the Public Transportation Department.

TRACKING AND INVESTIGATING TITLE VI COMPLAINTS

The Civil Rights Officer will review and investigate every complaint promptly. Reasonable measures will be undertaken to preserve any information that is confidential. At a minimum, the Civil Rights Officer will:

- Identify and review all relevant documents, practices and procedures; and
- Identify and interview persons with knowledge of the Title VI violation, i.e., the person making the complaint; witnesses or anyone identified by the Complainant; anyone who may have been subject to similar activity, or anyone with relevant information.

Once the investigation has been completed, the Civil Rights Officer will decide the validity of the complaint and what, if any, remedial actions will be taken to address the complainant's concerns. If a Title VI violation is found to exist, remedial steps as appropriate and necessary will be taken immediately. The complainant will also receive a final report together with any remedial steps. The investigation process and final report should take no longer than twenty-five (25) business days. If no violation is found and the complainant wishes to appeal the decision, he or she may appeal directly to the Director of Public Transportation, 301 Jackson Street, Richmond, Texas 77469.

The Civil Rights Officer will maintain a log of Title VI complaints received from this process which shall include the date the complaint was filed; a summary of the allegations; the status of the complaint; and actions taken by the Department of Public Transportation in response to the complaint. Should Fort Bend County receive a Title VI complaint in the form of a formal charge or lawsuit, the complaint will be forwarded to the Fort Bend County Attorney. The Civil Rights Officer's log of Title VI complaints will be included in each Title VI program update. If no complaints were received, a letter stating this fact will be included in place of the complaint log. See Appendix E for Fort Bend County's 2025 Letter of No Title VI Complaints.

Complaints may also be filed with the following organization no later than 180 days after the date of the alleged discrimination:

Federal Transit Administration's Office of Civil Rights
Attention: Title VI Program Coordinator
East Building, 5th Floor - TCR
1200 New Jersey Ave., SE
Washington, DC 20590
202-366-4018
http://www.fta.dot.gov/civilrights/title6/civil_rights_5104.html

The Civil Rights Officer will prepare and maintain a list of any active Title VI investigations, complaints, and lawsuits conducted by entities other than FTA.

PUBLIC NOTICE

The Fort Bend County Public Transportation Department is responsible for notifying the public and beneficiaries of public transportation services of protection under Title VI and providing instructions on how to file a discrimination complaint.

To notify the public and beneficiaries of public transportation services of protection under Title VI, the Public Transportation Department will do the following:

- Post the Title VI policy statement, instructions on how to file a complaint, and access to the complaint form on the departmental website.
- Post the Title VI policy statement and instructions on how to file a complaint in the office of the Public Transportation Department.
- Post the Title VI policy statement and instructions on how to file a complaint in all buses of the Public Transportation Department.
- Include information in the Fort Bend County Public Transportation's Title VI Notice on how to contact the Fort Bend County Public Transportation Civil Rights Officer to request additional information regarding the Title VI Program or to file a complaint.
 - Title VI notices can be found in the following locations/documents:
 - Buses
 - Website
 - Bulletins
 - Passenger Guidelines
 - Route Schedules
 - Brochures
 - Customer Handouts
 - Public Transportation Department Office and areas accessible to riders

All vital documents will be provided in the languages identified by FBC's Four Factor Analysis as languages spoken by at least one percent of the County's population. See Appendix J for Fort Bend County Public Transportation's Public Notice.

This Page Intentionally Left Blank

SECTION 5. PUBLIC INFORMATION ABOUT TRANSIT SERVICES AND LAP PLAN

The Fort Bend County Public Transportation Department is committed to ensuring meaningful access to programs and activities by persons with limited English proficiency, as required by FTA Circular 4702.1B.

This section has two purposes. The first purpose is to document the types of public information about transit services currently provided by the Public Transportation Department and to summarize public outreach and involvement activities to reach out to target markets including minority and low-income people, older adults, and persons with disabilities. The second purpose is to document a proposed approach to ensure meaningful access to persons with limited English proficiency by providing more bilingual information.

SUMMARY OF CURRENT PUBLIC OUTREACH AND INVOLVEMENT

The Fort Bend County Public Transportation Department provides public outreach pamphlets in both English and Spanish. The Public Transportation Department also provides public information about all transit services in English via the following media.

Internet Website: www.FBCTransit.org
Telephone: 281-633-7433
Toll Free: 866-751-8747
Fax: 832-471-1843
Email: transit@fortbendcountytexas.gov

Individuals with hearing impairments can make a reservation utilizing the Telecommunications Relay Service (TRS). The individual would dial 711 which would connect him/her to TRS. Individuals with vision impairments may request printed materials in larger fonts upon request.

The Fort Bend County Public Transportation Department engages in public outreach in order to attract ridership and inform others of transit services. Outreach takes the form of presentations, open houses, information tables, group discussions, posters, and pamphlets. Public involvement activities occur at churches, schools, medical facilities, community centers, governmental agencies, chambers of commerce, and agencies that provide human and social services for older adults and persons with disabilities. The Public Transportation Department keeps a record of the locations and events. The language used for all verbal presentations and group discussions is English; however professional interpreters are available for all presentations and events upon request. Sign language interpreters are available upon request.

Appendix F includes documentation of public presentations and public outreach initiatives by the Fort Bend County Public Transportation Department. Many of the collaboration meetings are with advocates for minority and low-income people – for example:

- Fort Bend County Meals on Wheels
- Catholic Charities
- Fort Bend Connect
- Literacy Council of Fort Bend County
- Fort Bend Independent School District
- Fort Bend County Indigent Health Care
- Texana
- The ARC of Fort Bend County

Public outreach also includes a concerted effort to reach out to health and human service agencies that support persons with disabilities and older adults.

PUBLIC PARTICIPATION PLAN

The Public Participation Plan (PPP) is a guide for FBCPT's ongoing public participation activities. The purpose of this PPP is to provide guidance when seeking public input related to projects and service changes and to identify techniques and methodologies for soliciting and considering public input.

The PPP aims to offer early and continuous opportunities for the public to be involved in the decision-making process and to consider the identification of social, economic, and environmental impacts of proposed transportation decisions. It is intended as a guide on how FBCPT will sustain its efforts to engage community members throughout the service area. As established with our Title VI policy, this includes seeking out and considering the viewpoints of minority, low-income, and Limited English Proficiency (LEP) populations as well as older adults and persons with limited mobility in the course of conducting outreach activities. Appendix I includes the PPP and provides specific strategies used to engage minority populations when engaging the public.

ENHANCEMENTS FOR PUBLIC OUTREACH TO TITLE VI POPULATIONS

In order to ensure that minority, low-income, and LEP persons have meaningful access to public outreach activities, the Fort Bend County Public Transportation Department will enhance the current public involvement program in the following ways:

- All public outreach efforts will continue to be descriptively documented and the following information about each outreach effort will be noted:
 - Date of the outreach;
 - Name, address, and phone number of location of the public outreach;
 - Names of Fort Bend County Public Transportation staff that were present;
 - Name of partner staff that were present;
 - Notes about the outreach effort describing the reason for the outreach and the format of the outreach (presentation, open house, information table, group discussion, meeting, or other);
 - Number of individuals in attendance.

- The Public Transportation Department has developed a Language Assistance Plan to ensure meaningful access to LEP persons (see LAP Plan below).

FOUR FACTOR ANALYSIS

In developing the language implementation plan, the Fort Bend County Public Transportation Department undertook a U.S. DOT “four factor” LEP analysis. A brief description of each factor and pertinent considerations are provided in the following discussion.

1. The number or proportion of LEP persons eligible in the Fort Bend County service area who may be served or likely to encounter a Public Transportation Department program, activity, or service.

As documented in Section 3 of this report, Spanish is the language other than English most often used by residents of Fort Bend County. Nearly 19 percent of the Fort Bend County households speak Spanish at home. According to the 2010 and 2020 census data, Fort Bend County has nine (9) languages other than English spoken at home by at least one thousand (1,000) Fort Bend County LEP residents. These languages are as follows: Spanish, Vietnamese, Chinese, Urdu, Malayalam, Tagalog, Gujarati, Hindi, and Arabic.

2. The frequency with which LEP individuals come in contact with a Public Transportation Department program, activity, or service.

The Fort Bend County Public Transportation Department assesses the frequency with which staff and drivers have or could possibly have contact with LEP persons. This includes documenting phone inquiries and verbally surveying drivers. The occasions when information is requested in another language are infrequent; however, when a request is made, the request is for information in Spanish.

3. The nature and importance of the program, activity, or service provided by the Public Transportation Department.

Public transportation is the means of travel to work, getting to medical appointments or attending school and achieving general mobility for many LEP persons. The Public Transportation Department partners with numerous community organizations and social and human service agencies to provide transit services. The Fort Bend County Public Transportation Department will collaborate with all organizations and agencies in the service area to seek public input, hold public meetings, and assist in advising all LEP persons of the types of language assistance and public transportation services that can be provided.

4. The resources available to the Public Transportation Department and overall costs.

The Public Transportation Department continuously assesses its available resources that could be used for providing LEP assistance. This includes determining the ability of members of the staff and drivers to speak another language (specifically, Spanish), having a contractor in place if/when a professional interpreter and/or translation services are needed, and which documents would be most valuable to be translated if and when warranted, taking an inventory of available organizations that the Public Transportation Department could partner with for outreach and translation efforts, and what level of staff training is needed.

Based on these four factors, the Fort Bend County Public Transportation Department developed a plan to assist LEP persons who speak Spanish as a native language.

LANGUAGE ASSISTANCE PLAN (LAP)

Consistent with guidance provided by FTA Circular 4702.1B, the Fort Bend County Public Transportation Department will provide language assistance for persons with limited English proficiency. It is the policy of Fort Bend Transit to provide a timely meaningful access to all persons with LEP (Limited English Proficiency) free of charge.

In addition, the department will monitor available information to anticipate the need for languages other than English that have been identified during the four-factor analysis.

Language Assistance Measures

In order to ensure meaningful access to LEP persons who have limited English proficiency, the Fort Bend County Public Transportation Department will enhance current public information about transit services in the following ways:

- The Title VI statement of policy and instructions for how to file a discrimination complaint. The complaint form will be provided in all languages that fall under the Safe Harbor Provision.
- Public information materials will be provided with an option for languages other than English.
 - Fort Bend County Public Transportation Department's website will have all vital documents posted in English and the ability to view in multiple languages including the languages identified under the Safe Harbor threshold. These vital documents are also available in print if requested.
 - The recorded information for the telephone number for general information will have a bilingual option in Spanish;
- When an interpreter is needed to respond to a telephone call to reserve a demand response transit trip, the person will be referred to a bilingual Public Transportation Department employee when available. If a bilingual employee is not available in the language requested, FBT will provide over the phone interpretation services through the

County's contracted translation vendor to assist the customer. The individual's reserved trip will be noted with their preferred language and on the driver's manifest to alert the driver to a LEP passenger who may need additional assistance.

- A member of the Fort Bend County staff who speaks Spanish or a contracted interpreter will be available to facilitate public outreach efforts involving the general public in areas of the county where there are concentrations of LEP population (to be determined based on census data or other reliable sources of information).
- The Public Transportation Department will make available an interpreter for public meetings. The announcement for the public meeting will state that translation services will be provided if requested in advance.

Monitor Trends in Languages Other than English

The Fort Bend Public Transportation Department will use the following tools to identify who may need language assistance:

- Examine records for language assistance from past meetings and events to anticipate the possible need for assistance at upcoming meetings.
- When the Public Transportation Department sponsors workshops or conferences, the responsible staff member will set up a sign-in sheet and then assign someone to personally greet and briefly speak to each attendee. To informally gauge the attendee's ability to speak and understand English, the greeter will ask a question that requires a full sentence reply.
- Require FBT Reservation staff and Receptionist document each time a call is received from a person who does not speak proficiently in English. Keep a log and review on a quarterly basis to establish a trend line.
- Examine the latest Census data.

Safe Harbor Provision

DOJ's Safe Harbor Provision outlines the circumstances that can provide transit agencies a "safe harbor" regarding the translation of written materials for LEP populations. It stipulates that if a recipient provides written translation of vital documents for each eligible language group that constitutes five percent (5%) of its population of persons, or 1,000 persons whichever is less.

Fort Bend County Public Transportation has identified the following as vital documents including:

- Title VI Notice/Policy
- Service/Route Schedules
- Passenger Guidelines
- Public Participation Plan
- ADA & Title VI Complaint Form and Procedures

Vital documents will be translated in the languages that meet the Limited English Proficient (LEP) Safe Harbor threshold and will be available to the public. For requests for translations in a language not identified under the Safe Harbor threshold, the public is encouraged to contact the Transit Office during normal business hours and allow three (3) to five (5) days to process the request.

These vital documents can be found on the department website and have been converted to text based website content. Users may access the converted content on the Fort Bend County Public Transportation website. Software is available on the website to natively translate the converted documents making it accessible and useable globally. This feature is accessible via the top right dropdown menu option "Select Language". There are more than 100 language options to select for translation including the languages that meet the Safe Harbor Provision. If a member of the public does not have access to a computer or the internet, Fort Bend Transit can provide this information in print in their desired language. Fort Bend County also has an agreement with several translation services that offer language and sign language interpreting services.

Training for Staff

The Fort Bend County Public Transportation Department will provide staff with a copy of the LEP Plan and provide training for all employees including new hires. Training topics will include:

- Understanding the Title VI policy and LEP responsibilities;
- What language assistance services the Public Transportation Department offers;
- Instructions on how to document language assistance requests; and
- How to handle complaints.

Monitoring and Updating the LEP Plan

The Fort Bend County Public Transportation Department will monitor and evaluate changes in LEP population through available demographic information to determine the growing incidence of other languages and potential need for language accommodation.

The LEP plan is designed to be flexible and can be easily updated. Each triennial update should examine components such as the following:

- Was the need for language assistance provided? If not, why not? If yes, how was the assistance was provided?
- Were any complaints received?
- Has there been any change in the types of languages where translation services are needed?
- What is the current LEP population in the service area?
- Is there still a need for continued language assistance for previously identified programs or services? Are there other programs or services that should be included?
- Have the goals of the LEP Plan been accomplished?

TRIENNIAL REPORTS

The Fort Bend County Public Transportation Department will prepare and submit a Title VI Program to FTA every three years beginning in 2009. The program will include the following information at a minimum:

- Evidence of notice to the public that the Fort Bend County Public Transportation Department complies with Title VI and instructions to the public on how to file a discrimination complaint;
- Procedures for tracking and investigating Title VI complaints;
- List of any Title VI investigations, complaints, or lawsuits;
- Summary of public outreach and involvement activities and steps undertaken to ensure that minority and low-income people have meaningful access to these activities; and
- Plan for providing language assistance for persons with limited English proficiency.

This Page Intentionally Left Blank

SECTION 6. SERVICES STANDARDS AND POLICIES FOR TRANSIT IN LARGE URBAN AREAS

According to the FTA Circular 4702.1B program-specific guidance for recipients that provide transit service in a large urban area, the Fort Bend County Public Transportation Department should adopt quantitative system-wide service standards and policies to guard against service design and operational policies that have disparate impacts. The department is also required to monitor transit service throughout the county to ensure that minority groups and low-income populations are beneficiaries of transit services. Every three years, the Fort Bend County Public Transportation Department is required to document compliance.

The purpose of this section is to document Fort Bend County compliance with the FTA Circular 4702.1B program-specific guidance for recipients that provide transit service in a large urban area.

SERVICE STANDARDS AND SERVICE POLICIES

Fort Bend County Public Transportation services are either demand response or commuter bus. As a result, the service standards and policies have specific requirements, different from traditional service standards that include local fixed-route service. The following paragraphs include the service standards and service policies for the Fort Bend County Public Transportation Department.

Service Coverage

Coverage refers to the geographic area where transit services are provided.

Demand Response	Commuter Service
Standard: Origins and destinations in Fort Bend County. The service area includes a buffer service area within one- mile of the county limit. Trips may be scheduled for origins and destinations within the buffer service area.	Standard: Service from park and ride lots in Fort Bend County to activity centers in the Harris County metropolitan area based on demand and resources. Intermediate stops may include METRO transit facilities to provide opportunity for regional connections by transfer.

Service Availability

Availability refers to how passengers may access transit service.

Demand Response	Commuter Service
Standard: Service is available curb-to-curb. All passengers must wear seat restraints. Seat restraints must be provided for children 40 lbs. or less. Passengers 12 years or younger must be accompanied by another person 18 years or older.	Standard: Service is available to anyone who can access the park and ride lot, by driving, walking, biking or by transfer from demand response transit service, or drop off.

Span of Service

Span of service refers to the days of the week and the hours that service is available.

Demand Response	Commuter Service
Standard: Days - Monday through Friday (excluding Fort Bend County holidays). Hours -Service is typically scheduled for first destination drop-off by 8:00 a.m. and last pick-up for service no later than 5:00 p.m.	Standard: Days - Monday through Friday (excluding Fort Bend County holidays) and Hours. Generally between 4:30 a.m. and 10:00 a.m. for service to activity centers and afternoon service between 3:30 p.m. and 8:35 p.m. for service from activity centers – some routes offer midday service between 11:00 a.m. and 2:00 p.m.

Service Frequency

Vehicle headway refers to the time interval between vehicles travelling the same direction on the same route.

Demand Response	Commuter Service
Standard: Not Applicable	Standard: 15-30 minute intervals during peak periods in the peak direction of travel. More frequent service (smaller intervals) may be provided as demand warrants and subject to available resources (funding and vehicle availability).

Load Factor

The “load factor” reflects the number of passengers divided by the seated capacity of the bus, reflected as a percentage.

Demand Response	Commuter Service
<p>Standard: Not to exceed 100%</p> <p>The demand response service, while serving members of the general public, also serves many older adults and persons with disabilities. This makes it important for 100% of riders to have a seat or wheelchair option. Fort Bend County Transit does not allow riders to stand while onboard the transit agency’s vehicles.</p> <p>Reservations for rides will be accepted on a “time and space” available basis.</p>	<p>Standard: Not to exceed 100%</p> <p>The commuter service is designed for riders to commute long distances to activity centers, making it necessary that riders have a seat. Fort Bend County Transit does not allow riders to stand while onboard the transit agency’s vehicles.</p>

Service Reliability (On-Time Performance)

On-time performance is a measure of service reliability.

Demand Response	Commuter Service
<p>Standard: Service is considered on-time within 15 minutes before and 15 minutes after the scheduled pick-up time.</p>	<p>Standard: Service is considered on-time if the bus departs a designated time point no more than 5 minutes later than scheduled. Operators should never depart a time point early (ahead of the published schedule). On-time performance should meet or exceed 90% at end of line locations.</p>

Vehicle Assignment

Vehicle assignment refers to the process by which transit vehicles are placed into service throughout the system.

Standard for Demand Response and Commuter Service: Buses are assigned to ensure the best match of vehicle specifications to the types of transit service to be provided. Vehicles will be assigned on the basis of safety, efficiency, and performance. Vehicle will not be assigned with the intent to provide preference or benefit to any geographic service area or any passenger.

Passenger Amenities

Passenger amenities include bus stops, benches, and shelters for the convenience of passengers who must wait for fixed route buses on schedule.

Demand Response	Commuter Service
Standard: A bus stop and/or a sign containing pertinent information may be posted at destinations that are frequent stops for demand response passengers, such as a medical facility.	Standard: A bus stop and/or a sign containing route information will be posted at stops. Passenger amenities such as benches and shelters will be incorporated in permanent park and ride lots, but may not be provided at temporary and/or leased park and ride lots because of tenant agreements.

REVIEW OF SYSTEM-WIDE SERVICE CHANGES AND FARE INCREASES

In order to comply with Title VI requirements, the Fort Bend County Public Transportation Department will evaluate significant system-wide service and fare changes and proposed service improvements at the planning and programming stages to determine whether those changes have a discriminatory impact on minority and low-income populations.

The Public Transportation Department will follow the Public Participation Plan (PPP) when evaluating significant system-wide service, fare changes, and proposed service improvements:

Under FTA guidelines, Fort Bend County can implement a fare increase or major service change that would have disproportionately high and adverse effects on minority and low-income riders provided the Public Transportation Department demonstrates that the action meets a substantial need that is in the public interest and that alternatives would have more severe adverse effects than the preferred alternative.

REVIEW FOR TITLE VI COMPLIANCE

As a way to ensure Title VI compliance, the Fort Bend County Public Transportation Department will monitor Title VI related service factors. The review will include the following steps:

- **Record of Complaints:** The Public Transportation Department will investigate and track Title VI complaints according to the adopted procedures. Fort Bend County Public Transportation Department will maintain a list of any active investigations conducted by entities other than FTA, which includes lawsuits and complaints.
- **Ridership Data:** The Public Transportation Department will monitor the location of riders of transit services and compare to the most current demographic data to ensure no

discriminatory service. The department will include questions to ascertain rider characteristics for Title VI demographics in periodic surveys of transit riders.

- **Changes in Service:** The Public Transportation Department will evaluate and modify any change in service in order to eliminate or mitigate adverse effects or discrimination that could occur as a result of the change. Changes in service include changes in routes, hours of operation, frequency of service, reduction of service, or elimination of service.
- **LEP Plan:** The Public Transportation Department will provide language assistance in Spanish for persons with limited English proficiency according to the LEP Plan. In addition, the department will monitor available information to anticipate the need for languages other than English and Spanish on an annual basis. Information on LEP populations will be obtained from the U.S. Census American Community Survey data. This will help track growth of specific languages in the county.
- **Public Outreach:** The Public Transportation Department will maintain a list of all public outreach initiatives and presentation. Records will be reviewed periodically to ensure that minority, low-income, and LEP persons have meaningful access to public outreach activities.

REFERENCES

Federal Transit Administration. Circular 4702.1B, Title VI Requirements and Guidelines for Federal Transit Administration Recipients.

Federal Transit Administration. Quick Reference Title VI Circular 4702.1B

**APPENDIX A – O&M FACILITY & WESTPARK
PARK AND RIDE ADVANCE PLANNING REPORT**

Fort Bend County
Westpark Corridor Park and Ride
Advanced Planning Report
June 2011

Prepared for Fort Bend County
Public Transportation Department

Prepared by IDC, Inc.
In association with BGK Services, Nancy Edmonson, PB, TEI, PGAL



Table of Contents

Chapter 1 – Introduction

Chapter 2 – Demand Analysis

Chapter 3 – Site Selection

Chapter 4 – Site Plan

Chapter 5 – Operating Plan

Chapter 6 – Financial Plan

Conclusion

CHAPTER 3 — SITE SELECTION ANALYSIS

CANDIDATE SITES

Based on current demographics in the corridor, traffic volumes, area travel times and current operation of park and ride service, a number of sites in the Westpark Corridor have been identified as candidate locations for providing park and ride service. It has been determined that a 200 to 300 space park and ride lot would be the appropriate size for the park and ride facility given projected demand, the County's park and ride master plan, and available transit vehicles to service the facility. An eight to ten acre site was deemed to be the appropriate size to accommodate the parking needs, drainage and detention on site, passenger amenities, bus circulation and future expansion, if needed. Finally, in identifying prospective sites, particular attention was given to sites that were undeveloped and had frontage or good access to Westpark/FM 1093.

Six sites along the Westpark Corridor were identified as potential locations for the Park and Ride facility. These sites include:

1. Westpark/FM 1093 @ SH 99 (northwest corner)
2. Westpark/FM 1093 @ SH 99 (southwest corner, behind planned commercial development)
3. Mason Road just north of Westpark (northwest, behind existing commercial development)
4. Westpark/FM 1093 between Grand Mission and Mason Rd (north side, outbound direction – property owned by Fort Bend County)
5. Westpark/FM 1093 @ Peek Road (southwest/southeast corners)
6. Westpark/FM 1093 @ Canal (southwest corner)

Figure 6 provides a map with the locations of the prospective Park and Ride sites.



- | | |
|---|--|
| 1 | WESTPARK NW CORNER OF SH 99 |
| 2 | WESTPARK SW CORNER OF SH 99 |
| 3 | MASON ROAD |
| 4 | COUNTY OWNED SITE-WESTPARK BETWEEN MASON AND GRAND MISSION |
| 5 | PEEK ROAD |
| 6 | LAKES OF BELLA TERRA |

LEGEND

PREFERRED SITE

OTHER STUDY SITES

COUNTY BORDER

DESCRIPTION OF SITES

Each of the prospective sites considered for Park and Ride development are located along or adjacent to the Westpark Tollroad and are accessible from the surrounding neighborhoods. As part of evaluating each site, an initial site survey and examination was conducted to assess the development possibilities. The following is a summary of the initial assessment of each site:

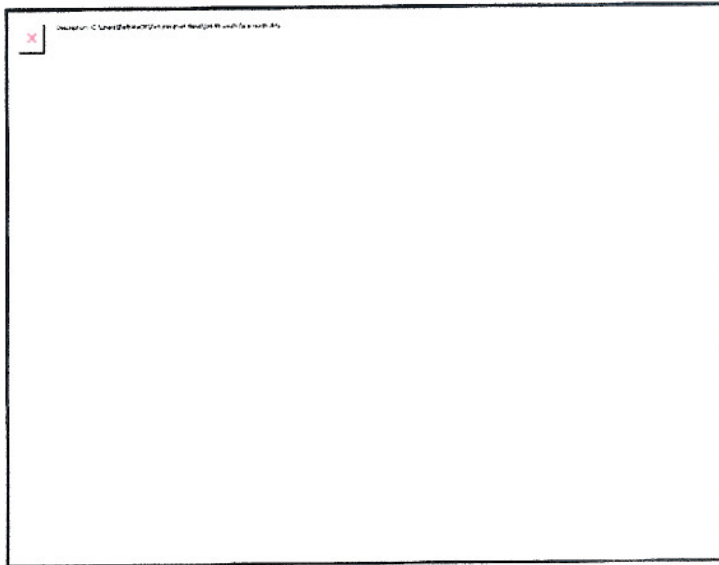
- **SITE 1 - WESTPARK/SH 99 (northwest corner)**



Description of Site – 30+ acres undeveloped property located at the northwest corner of the intersection of Westpark/FM 1093 and SH 99. The site is across from the Westpark Tollroad terminus, where the tollroad structure meets the grade at FM 1093. The site is adjacent to the Seven Meadows development on the west. To the south, across Westpark/FM 1093, is a large retail development.

Observations – a retaining wall is built around the eastern and southern perimeter of the property. It appears that the area has been platted for a roadway that could be the northern extension of Canal Road. The grade of the property is different than the grade of SH 99. This is a large site that could accommodate current and future demand for Park and Ride demand, but additional roadway improvements, access, and traffic control would be required.

Concerns – access to this site would be difficult; no access from SH 99 would be possible due to the severe change in grade and current obstruction of a retaining wall. Not able to access site from the west on FM 1093 due to obstruction of the Westpark Tollroad ramp. Future plans for the extension of the Westpark Tollroad would further impact access from FM 1093. Traffic congestion in the vicinity of the intersection during peak periods would impact ingress and egress to site. Due to the significant difference in elevation of site and adjacent SH 99, drainage at the site could be a concern.

SITE 2 - WESTPARK/SH 99 (southwest corner)

Description of Site – site is approximately 5 acres undeveloped property located near the southwest corner of the intersection of Westpark/FM 1093 and SH 99. Drainage improvements have been constructed. The site is across from Westpark Tollroad where the structure meets FM 1093 at grade and serves as the current terminus of toll facility. Site is adjacent to a major retail development and the northeast border of the Lakes of Bella Terra subdivision.

Observations – the site is being prepared for construction and therefore property may not be available for Park and Ride lot development. There is good access from eastbound FM 1093 and Canal Road. Not accessible from westbound FM 1093, due to obstruction of Westpark ramp. Access is also available from SH 99 on Bella Terra Parkway (small arterial extending from SH 99 to Canal Street, bisecting retail development). Location may be good for future development of commuter rail station, but limited in size, due to existing and planned retail development. Location may offer transit oriented development opportunities.

Concerns – site may not be big enough to accommodate Park and Ride needs. Site would not offer room for expansion. Site may not be available for potential P&R site due to pending commercial development in the area. Canal Road is a two lane open ditch roadway and will require upgrading in order to serve a future park and ride site.

- **SITE 3 - MASON RD, JUST NORTH OF WESTPARK (northwest corner behind commercial development)**



Description of Site – 7 acre undeveloped site located on Mason Road, just north of Westpark/FM1093. Access to site is from Mason Road. The northern edge of the site is adjacent to the levee and is south of the Cinco Ranch development.

Observations – the site is visible, but not accessible from Westpark/FM 1093. The 7 acre site is long and narrow. The intersection of FM 1093 and Mason Road is signalized but the access would only be from Mason Road. Mason Road connects both to the north and south of Westpark Tollroad, accommodating access in all directions. Site provides mixed use and transit oriented development (TOD) opportunities.

Concerns – given the close proximity to the levee and elevation of the site, it appears that drainage and flooding would be an issue. The site is located in the 500 year floodplain. Site lacks frontage on FM 1093 and therefore may not be as attractive. Limited access from northbound and southbound Mason Road may present a traffic problem. The long narrow configuration of site may impact bus and auto circulation at the site.

- **SITE 4 - WESTPARK BETWEEN MASON RD AND GRAND MISSION** (north side of Westpark)



Description of Site – 10 acre undeveloped site fronting Westpark/FM 1093 between Mason Road and Grand Mission Blvd. (.8 miles east of Mason Road and .3 miles west of Grand Mission Blvd.) Property is owned by the County. Northern edge of site is adjacent to the levee.

Observations – large, rectangle shaped site located mid-block on FM 1093. Site could accommodate current and future Park and Ride demand. Site can easily accommodate parking requirements, bus circulation and operation and passenger amenities. Site would have limited access from westbound FM 1093. From initial examination, slope and elevation of site appear good and site from initial inspection appears to drain well, though the site is located in the 500 year floodplain. It could be possible to have multiple access points from FM 1093 to enhance circulation. Site could be candidate for joint use and TOD opportunities. Site could also connect to proposed hike and bike path located along the levee.

Concerns – mid-block site limits access. All eastbound traffic to site would have to U-turn at Grand Mission Blvd to access site. For the AM commute to major employment centers (e.g. Uptown Galleria, Greenway Plaza, Texas Medical, Downtown Houston), bus service would have to travel west to Mason Road and then U-turn to head east toward the employment centers. The Texas Department of Transportation (TxDOT) will need to approve access points to the site.

- **SITE 5 - WESTPARK @ PEEK ROAD** (south side of Westpark - 2 potential sites)



Site A

Description of Site – undeveloped site located at the southwest corner of the intersection of FM 1093 and Peek Road. Site appears to be available for lease or sale, though platted for commercial development. Though site is over 10 acres, site may be an aggregate of multiple properties. Peek Road is a four lane divided roadway that connects north and south of the Westpark Tollroad/FM 1093.

Observations – site has good access from all directions and would be a good candidate for TOD. Being on the south side of Westpark Tollroad, site is good for future development of a commuter rail station. Site is part of large real estate development associated with Ferguson.

Concerns – site may be expensive as it is already platted for commercial development. Peek Road currently experiences heavy traffic volumes during the AM peak.

**Site B**

Description of Site – undeveloped site located at the southeast corner of the intersection of FM 1093 and Peek Road. Site is smaller than the site to the west (estimated 7 acres) across Peek Road. Peek Road is a four lane divided roadway that connects north and south of the Westpark Tollroad/FM 1093. Site is adjacent to homes on both the east and south sides of the property.

Observations – site has good access from all directions and would be a good candidate for TOD. Being on the south side of Westpark Tollroad, site is good for future development of a commuter rail station. This site is smaller than the site to the west and could potentially impact neighboring residential developments.

Concerns – site may be expensive as it is located in the Lost Creek subdivision which is already developed. The apparent smaller size of the property limits future options for expansion.

- **SITE 6 - FM 1093/CANAL (southwest corner, T-intersection)**



Description of Site – 15+ acres undeveloped property located at the Southwest corner of FM 1093 and Canal Road. The site is across from the Westpark Tollroad terminus, where the aerial structure is coming to grade. The site is located at the northeastern edge of the Lakes of Bella Terra development. Just across Canal Road to the east is a large retail development. Bella Terra Parkway connects the site from the east, extending from the SH 99 frontage road.

Roadway Network – Canal Road from FM 1093 to Bellaire Boulevard (2 lane undivided, open ditch), FM 1093 eastbound (2 lanes), Westpark Tollroad grade separation coming to grade and merging with FM 1093

Observations – large, undeveloped site with access from FM 1093 eastbound, Canal Road and SH 99 southbound (via Bella Terra Parkway). Site is adjacent to both residential development and large commercial development. Being on the south side of Westpark Tollroad, site may provide an opportunity for future development of a commuter rail station and appears to have TOD opportunities. Plans for the extension of Katy-Gaston Road may enhance access to the site.

Concerns – westbound traffic on FM 1093 would not be able to access the site at Canal Road due to obstruction of the Westpark Tollroad ramp, but could access the site from southbound SH 99 frontage road. Future plans for the extension of the Westpark Tollroad may further impact ingress and egress.

SITE EVALUATION

In identifying and assessing opportunities and locations for providing park and ride services, a number of factors were addressed as part of the evaluation process. A series of evaluation criteria were developed to analyze and compare each site.

Identification of Evaluation Criteria

The evaluation process was designed to address the specific needs in the corridor. A number of factors were considered in the identification and development of the evaluation criteria and measurements:

- Evaluation criteria should relate to local demographics and mobility needs of the study area;
- Evaluation measures should be appropriate to address the stated objectives of the Park and Ride demand analysis and site selection;
- Efforts should be made to apply evaluation measures that quantify impacts rather than convey qualitative judgments on the nature of the impact; and
- Evaluation measures should provide the proper perspective on the magnitude of the impacts and/or associated benefit that result in the location and development of the park and ride facility.

In identifying the evaluation criteria, the goal was to develop an evaluation plan and methodology that addresses the mobility concerns of the corridor while effectively providing a comparison of various sites' strengths and weaknesses, costs and benefits, constructability, and mitigation requirements. The evaluation criteria address issues that are important to the vitality of the corridor and feasibility of implementation and analyze impacts and influences on mobility and travel patterns. In addition, the evaluation criteria provide a standard to assess impacts to and compatibility with the natural, manmade, and social environments. A list of evaluation criteria was developed that provide a thorough assessment of the alternatives. The criteria are designed to provide a tangible means for comparing the alternatives.

The evaluation was an iterative process and the findings from the initial evaluation of prospective sites led to a more in depth analysis and further evaluation of the identified sites and possible addition of other prospective sites. All prospective sites were evaluated objectively and potential fatal flaws were identified. Based on the evaluation criteria, if a potential site was found to have a fatal flaw, the site was dropped from further evaluation and consideration. The sites listed above were not found to have fatal flaws.

The following presents the criteria used to assess the alternatives in accordance with the requirements of the FTA evaluation process. **Table 10** provides a description of the evaluation criteria and objective of applying each criterion.

TABLE 10: EVALUATION CRITERIA

Criteria	Description
Direction	Is the site located on the south/inbound direction of the roadway or the north/outbound direction? Inbound sites may perform slightly better
Availability of site	Is the prospective site developed? Will multiple parcels be required to accommodate use? Are there opportunities for shared use?
Suitability of site	Size, shape, physical condition, location (relative to adjacent properties and access) of the site. Are there opportunities for expansion to meet future demand?
Accessibility	Global – how accessible is the site from a regional perspective; are there major thoroughfares that provide connectivity? Local – how easy is it to get to the site on the area roadway network?
Existing roadway and traffic conditions	What are the conditions of the street network? What are the traffic volumes and Level of Service in the vicinity of the sites? Is there sufficient roadway capacity to accommodate access/egress to site?
Environmental Concerns/Fatal Concerns	Are there any environmental concerns (sensitive receptors, drainage, historic, HAZMAT, etc.) that could not be easily remediated or would result in the site being eliminated from consideration? Other considerations – Corp of Engineers
Security Concerns	Does a site appear to be more susceptible to safety and security breaches?
Travel Demand/Area Capture Opportunities	Would a site attract more riders based on location, accessibility, adjacent properties, and future development?
TOD/Shared Use opportunities	Does a site provide an opportunity for future development that would support transit activity and provide economic development? Are there opportunities at a site for shared use of the facility for the mutual benefit of both parties?
Consistency with Regional Plans	Is the site consistent with improvements included in Regional Transportation Plan? Do any of the sites conflict with plans by other agencies for future improvements, roadway expansions, and/or other transportation services?
Costs	What are the costs to acquire property, construct site, install amenities, improve infrastructure at each site?
Impacts to Adjacent Properties/Land Uses	Is a site compatible or does it adversely impact adjacent land uses as a direct or indirect result of implementation of the facility?
Title VI /Environmental Justice	Consideration at prospective site of potential disproportionate impact on "traditionally underserved" communities as a result of project implementation of project. What about the 'positive impacts' to location?
Stakeholder Support	The input, support and recommendations of area interests, including Fort Bend County Commissioners, Fort Bend Chamber of Commerce, area jurisdictions and regional entities.
Compatibility with Stated Project Purpose and Need	The extent to which each alternative site supports the goals and objectives of the project, in terms of ridership, area mobility, limited impacts, and cost/benefits

EVALUATION FINDINGS AND RANKINGS

In conducting the evaluation and comparing the prospective park and ride sites, it was found that there were commonalities among the sites. All of the sites are within close proximity to the Westpark Tollroad and SH 99 and therefore provide good global access for the commuters residing in the area. Also, all of the sites are undeveloped and future development would most likely not conflict with adjacent properties, nor result in any serious environmental impacts. While drainage concerns were cited, the development at any of the sites would include appropriate detention and drainage improvements.

The greatest differences among the sites were location and the quality of the connection to each site. The ease of access/egress at the site, roadway conditions and the visibility of the site provided a distinction among sites. Another evaluation criterion that played a role in the evaluation process was consistency with regional plans and joint use opportunities. In selecting a prospective site for the short term park and ride service, Fort Bend County also is anticipating the long term opportunity to coordinate park and ride and the potential commuter rail and local bus services in the future. Consideration was given to the future growth and extension of transit services in the corridor.

An evaluation matrix was developed listing the six candidate sites and all the evaluation criteria and a comparison was made between the findings at each site. **Table 12** provides the completed matrix of the evaluation findings in a narrative format.

Based on the findings in the matrix by criterion, each evaluation finding per site was categorized as being a positive attribute, neutral, or being a liability. The ranking of “+1” indicated that the site positively met the consideration of a particular evaluation criterion. A “0” ranking indicated the site had no positive or negative impact as related to the evaluation criterion. The “-1” ranking signified that the site did not meet the requirements of the specific evaluation criterion. With values placed on the evaluation findings, it became obvious that a few of the candidate sites would be preferred for the development of Park and Ride lot given the greater number of positive site attributes.

Applying values to the evaluation findings provided the quantitative means for assessing the sites. It was apparent that some of the criteria used to evaluate the sites were more critical to the success and effective operation of the park and ride service. Moreover, some of the evaluation criteria produced consistent findings among all the candidate sites and offered little comparison in performance. Differences were discernable between the sites in terms of cost, travel demand, accessibility and site availability and suitability. While the roadway direction, environmental concerns, and consistency with plans were all important considerations to address, these criteria did not have as direct an impact on the successful development of the site and implementation of service. Therefore, a weighting formula was established to ensure that the most critical evaluation criteria were given greater consideration reflective of

the importance in the development of the site and implementation of the service. **Table 11** provides the weights per criteria. Availability of Site, Suitability of Site, Accessibility, Projected Demand and Cost were weighted twice as much as the other criteria, as these criteria are the key considerations in the selection of the most appropriate site development in the corridor.

TABLE 11: WEIGHTING OF EVALUATION CRITERIA

CRITERIA	WEIGHT
Direction of Travel	5
Availability of Site	10
Suitability of Site	10
Accessibility	10
Existing Roadway and Traffic Conditions	5
Environmental Concerns/Fatal Flaws	5
Security Concerns	5
Travel Demand/Area Capture Opportunities	10
TOD Opportunities /Shared Use	5
Consistency with Regional Plans	5
Costs	10
Impacts to adjacent properties/land use	5
Title VI/Environmental Justice	5
Stakeholder Support	5
Compatibility with Stated Project Purpose and Need	5
SUM	100

A site review and group evaluation workshop was conducted, in which the members of the consultant team, in conjunction with staff from the Fort Bend County Department of Public Transportation, discussed and individually evaluated and rated each site based on the findings of evaluation analysis. Each site was rated criteria by criteria with the +1, 0, -1 measures and the weighted values were applied to the aggregate evaluation numbers and then totaled. By multiplying the weighted values to the evaluation scores, the differences between the sites became more apparent and the sites with the greatest potential received higher scores. **Table 13** provides the final evaluation findings.

TABLE 12: EVALUATION MATRIX

EVALUATION CRITERIA	Site 1 Westpark/FM 1093 @ SH 99 (NW corner)	Site 2 Westpark/FM 1093 @ SH 99 (SW corner)	Site 3 Mason Road @ Westpark/FM 1093 (North of FM 1093)	Site 4 Grand Mission/ Westpark/FM 1093 (N - mid block)	Site 5 Peek @ Westpark/FM 1093 (SE or SW corner)	Site 6 Canal @ Westpark/ FM 1093 (W of Canal, south of FM 1093)
Direction	Inbound	Outbound	Outbound	Outbound	Inbound	Inbound
Availability of site (one parcel vs. multiple parcels)	undveloped; approx. 30+ acres	currently being developed, site would have to be a shared use facility; approx 5 acres	undveloped, behind strip mall development; approx 7 acres	undveloped, owned by County; approx 10 acres	undveloped, adjacent to existing subdivision development, multiple parcels; approx 10+ac	undveloped, owned by Lakes of Bella Terra, METRO considering purchasing the site; app. 15+ ac
Suitability of site (size, unimproved, shape, existing conditions, expandability)	grade and drainage concerns	limited size, would share with new commercial development; may not offer sufficient space for expansion	long and narrow; located behind existing development, possible drainage issues	large undeveloped site; good shape, satisfactory elevation, mid-block location is a concern, possible flooding concerns	Ok size and available parcels; appears satisfactory, would be compatible with park & ride & commuter rail development	large undeveloped site; good shape, compatible with park & ride and commuter rail development; future expansion possible
Accessibility (local/area and global/regional)	global access-good local access-very poor, limited access from FM 1093, none from SH 99	global access-good local access-OK, fronts both FM 1093, Canal, and Bella Terra Pkwy	global access - good local access - poor, only access from Mason; no FM 1093 frontage	global access - good local access - avg., mid-block hard to access from for traffic traveling eastbound	global access good local access -good, fronts both FM 1093 and Peek Rd.	global access- good local access- good, access from Canal, FM 1093, Bella Terra Pkwy
Existing roadway and traffic conditions	poor; located at terminus of tollroad, congestion could be relieved with improvements on SH 99	avg; access also provided from Canal and Bella Parkway, located at end of tollroad, congestion could be relieved with improvements on SH 99	poor; heavy traffic on Mason in AM; no access from FM 1093	avg; access to site only from the east, AM commuters traveling EB would travel through heavily congested intersections before U-turn at Grand Mission	OK; heavy along Peek Rd in the AM, signalized intersections assist traffic control	OK; Site adjacent to terminus of tollroad; Canal only 2 lanes, some congestion could be relieved with improvements on SH 99
Environmental Concerns/Fatal Flaws	none known, poss. drainage concern	none known	none known, possible drainage concern	none known, possible drainage concern	none known	none known
Security concerns	none apparent	possible; adjacent to commercial, retail development	possible; behind strip center and commercial development	none apparent	possible; platted for commercial development	possible; adjacent to major retail development
Travel Demand/ Area Capture Opportunities	located further west in study area; AM commuters residing east of SH 99 will back track to site; site on outbound side of FM 1093	located further west, in study area; AM commuters residing east of SH 99 will back track to site; improved access from SH 99	located on outbound side of FM 1093, with no Westpark frontage	located on outbound side, on a mid-block section, eastern most site considered, most AM commuters reside west of site and will back tract to reach site	located on inbound side and adjacent to commercial development, high capture rate	located further west; inbound side-strong capture rate from surrounding developments, commuters residing east of SH 99 will back track
TOD / Shared Use Opportunities	poor	good	average	average	good	good
Consistency with Regional Plans	Westpark extension and SH 99 improvements may improve access to site	Westpark extension and SH 99 improvements may improve access to site; adjacent to future proposed commuter rail corridor	no conflicts	no conflicts	adjacent to proposed future commuter rail corridor	adjacent to future commuter rail corridor and proposed station location currently being considered by METRO
Cost						
FBCAD sq. ft. est.	\$2.59	\$2.75	Commercial \$5.00	County owned \$3.75	Commercial—2 sites \$3.00/\$6.24	Ag. Exempt \$0.45
Impacts to adjacent properties/land uses	no anticipated impact; freeway and single family development	no anticipated impact; commercial development	no anticipated impact; commercial, multi and single family development	no anticipated impact; commercial and industrial development	no anticipated impact; commercial, multi and single family development	no anticipated impact; commercial and single family development
Title VI/Environmental Justice	None apparent	None apparent	Possible traffic impact to adjacent community	None apparent	None apparent	Possible traffic impact to adjacent community
Stakeholder support	Prev. concern from area interests	neutral	Prev. interest from land owner	Supported by County	neutral	Joint use/expansion opportunity
Compatible with stated project purpose & need	Location & accessibility may impact travel demand	Currently under construction for other use	Traffic, drainage & operational concerns	Visible site with easy access	Traffic & land use concerns	Traffic, accessibility & land use concerns

TABLE 13: WEIGHTED EVALUATION TOTALS

CRITERIA	Weights	Site					
		1	2	3	4	5	6
Direction of Travel	5	-15	10	0	0	20	20
Availability of Site	10	30	-30	10	40	0	10
Suitability of Site	10	10	0	-30	30	-10	40
Accessibility	10	-30	10	-30	10	20	10
Existing Roadway and Traffic Conditions	5	-20	0	-20	10	5	5
Environmental Concerns/Fatal Flaws	5	-10	10	-20	-5	0	10
Security Concerns	5	5	0	-15	5	0	5
Travel Demand/Area Capture Opportunities	10	0	10	10	40	20	0
TOD Opportunities /Shared Use	5	10	15	0	0	5	20
Consistency with Regional Plans	5	-5	15	5	5	0	15
Costs	10	-30	20	-30	40	-30	0
Impacts to Adjacent Properties/Land Uses	5	10	15	-5	20	-5	10
Title VI/Environmental Justice	5	0	5	0	10	0	0
Stakeholder Support	5	-5	10	5	20	5	15
Compatibility with Stated Project Purpose and Need	5	-5	0	5	20	5	5
Sum	100	-55	90	-115	245	35	165

The preferred site that emerged from the evaluation process was Site 4, located on the north side of FM 1093/Westpark Tollroad between Mason Road and Grand Mission. The preferred site is an undeveloped site and currently owned by Fort Bend County. The site offers access with frontage on Westpark/FM 1093. The rectangular shaped site can easily accommodate the necessary parking requirements and on-site bus operations and maneuvering. There do not appear to be any major environmental or land use issues to address. The site is sufficiently sized to allow for shared use or future expansion. The back of the site is adjacent to a levee where a future hike and bike trail is proposed. The Park and Ride site provides the opportunity to connect the trail to facility and allow for multimodal use of the site.

CHAPTER — 4 SITE LAYOUT

The selected site is approximately 10 acres, which is more than sufficient to accommodate the needed spaces and associated amenities to meet the projected demand for park and ride service in the short to mid-term time frame. The adjacent properties are currently undeveloped and provide an opportunity in the future for expansion or Transit Oriented Development.

The layout of the proposed Westpark Park and Ride facility has been prepared with input from Fort Bend County. The site plan takes into account the requirements for bus circulation, auto access, placement of the bus shelter pad for pick-up and drop-up, and appropriate detention. **Figure 7** exhibits the proposed site plan which provides 204 total spaces for the park and ride service, including 7 handicapped spaces. The front of the property, adjacent to FM 1093, will be reserved for commercial or future County use. The Park and Ride parking spaces, bus access, platform and patron amenities will be developed just north of the reserved frontage strip. The back portion of the property will not be used for the park and ride and that area may be shared with other Fort Bend County facilities.

Table of Contents

Advanced Planning Report	Error! Bookmark not defined.
Chapter 1- Introduction.....	3
Fort Bend County Transit Plan.....	3
Existing Executive/Administrative Staff	4
Contracted Operations and Maintenance Staff (First Transit).....	5
Existing Transit Facilities.....	5
Chapter 2- Demand Analysis	7
Background.....	7
Future Transit Service.....	8
General Findings of the Long-Range Plan.....	8
Future Staffing Levels	9
Chapter 3- Site Selection Analysis	10
Candidate Sites	10
Evaluation Criteria	10
Evaluation Findings & Rankings.....	11
Nominated Sites	11
Site 1- Bamore Extension NE, Rosenberg (Fairgrounds)	12
Description of Site	12
Observations.....	13
Flood Plain	14
Site 2- 14000 University, Sugar Land (U of H; Admin Only)	15
Description of Site	15
Observations.....	16
Concerns	16
Flood Plain	17
Site 3 – SW Corner of Hwy-90 and Hwy-6, Sugar Land	18
Description of Site	18
Observations.....	19
Flood Plain	20
Access	21
Concerns	21
Site 4- SE Corner, Bamore and Hwy 59	22
Description of Site	22

Fort Bend County Transit Facility – Advanced Planning Report

Observations.....	23
Flood Plain	24
Chapter- 4 Site Layout	25
Chapter 5-Operating Plan.....	26
Current Operations.....	26
Savings For Unified Location of Operations	27
Implementation Plan/Timeline	27
Chapter 6 – Financial Plan	28
Operating and Maintenance Costs.....	28
Costs Related to Facility Location.....	28
Conclusion	29

Chapter 3- Site Selection Analysis

Candidate Sites

19 sites were presented as candidates for the new transit facility. These sites contain locations in rural, urban and suburban areas of the county.

- ✚ Pink Taylor Run, Kendleton
- ✚ SE Corner of Bamore and Hwy 59, Rosenberg
- ✚ 2005 Cottonwood School Road, Rosenberg
- ✚ Hartledge Road, Rosenberg
- ✚ Blume RD, Rosenberg
- ✚ Stella Road Curve – South, Rosenberg
- ✚ Bamore Extension – NW, Rosenberg
- ✚ Bamore Extension NE, Rosenberg
- ✚ 14000 University Blvd., Sugar Land
- ✚ 11853 Addicks-Howell Road, Houston
- ✚ 1015 Harlem Road, Richmond
- ✚ SE Corner Owens & 99, Richmond
- ✚ SW Corner Hwy 6 & Hwy 90, Sugar Land
- ✚ McHard Road (2234), East of Ft. Bend Tollway
- ✚ NE Corner Hwy 6, Ft. Bend Tollway,
- ✚ Williams Way Near FBSO
- ✚ George Foundation, 762 East of 2977
- ✚ Hwy 36 Park & Ride Site
- ✚ 2000 Preston, Richmond

Evaluation Criteria

The sites were evaluated against a list of criteria and scored to provide suitable candidates for further investigation. The criteria used for each site are listed below:

- **Physical**
 - Size – 20 Acres +/- 5%
 - Shape – Rectangular, 3:1 Aspect Ratio
 - Cost - \$/Acre
 - Availability – Ease of acquisition, on the market
 - Adjacent Property Available – Potential for future expansion
 - Topography/Terrain - Cost to mitigate hills, ponds & other features
 - Zoning – Appropriately zoned
- **Amenities**
 - Utilities – Proximity of required utilities
 - Rural/Urban/Other – Good Neighbors, Employee Commute, etc.

Fort Bend County Transit Facility – Advanced Planning Report

- **Environmental**
 - Hazardous Materials
 - Wetlands/Neighborhood/Other
 - Native Trees
- **Operations**
 - Location - Proximity to Thoroughfare
 - Operational Cost Impact
- **Other**
 - Public/Private Partnership (PPP) Potential
 - Marketing Potential
 - Additional Costs for Split Site

Evaluation Findings & Rankings

Nominated Sites

The sites scored from 71 to 130 points, out of a possible 150, with the average being 103. The median score was 115. The seven sites scoring 120 points or more were presented to a larger focus group for vetting and discussion. Figure 2 shows the scores for all sites.

2000 Preston Richmond, Texas	71.00
Hwy 36 Park & Ride	121.00
George Foundation 762 East of 2977	118.00
NE Corner Hwy 6, Ft. Bend Tollway.	118.13
McHard Road (2234), East of Ft. Bend Tollway	97.91
SW Corner Hwy 6 & Hwy 90 Sugar Land, TX	125.37
SE Corner Owens & 99 Richmond?	112.08
1015 Harlem Road Richmond, Texas	110.90
14000 University Blvd Sugar Land, Texas	127.00
Bamore Extension NW Rosenberg, TX 77471	123.00
Bamore Extension - NE Rosenberg, TX 77471	130.00
Stella Road Curve - South Rosenberg, TX 77471	120.00
Blume RD, Rosenberg, TX 77471	110.00
Hartledge Road, Rosenberg, Texas	115.18
2005 Cottonwood School Road, Rosenberg, Texas 77471	115.35
SE Corner, Bamore & 59, Rosenberg, Texas	122.62
Pink Taylor Run, Kenderton, Texas 77451	92.90

Figure 2 – Vetted Scoring; Top 4 Sites Highlighted

The top four scoring sites are discussed in more detail as follows. The complete scoring matrix is shown in Appendix A.

Site 1- Bamore Extension NE, Rosenberg (Fairgrounds)

Description of Site

This site is located south of Highway 59 and west of Highway 36 in Rosenberg. The site is part of a 50 acre tract currently owned by the county. Requiring only 20 acres the transit facility could comfortably occupy a portion of the land furthest away from the nearby subdivisions. The site is adjacent the County's fuel depot which includes distribution facilities as well as bulk fuel storage.



Figure 3 – Site Plan



Figure 4 – Site Aerial Image

Observations

The property is currently owned by the county so acquisition and purchase would be trivial. The current access to the property from Highway 59 will improve greatly as the Bamore Road extension project completes along with the I-69 upgrade project.

Electric utilities exist on the site. A line of poles follows the the drainage ditch on the southwest side of the property. The property resides in Ft. Bend MUD #148 which provides water and sewer through the City of Rosenberg.

Site 2- 14000 University, Sugar Land (U of H; Admin Only)

Description of Site

The site is located near the intersection of Highway 59 and University Blvd. in Sugar Land. This site is currently home to the University of Houston's Sugar Land campus. The university owns approximately 245 acres at this location. The exact location for the facility has yet to be determined. The caveat for this location is the restriction that this be the administrative arm only with the maintenance facility located elsewhere.

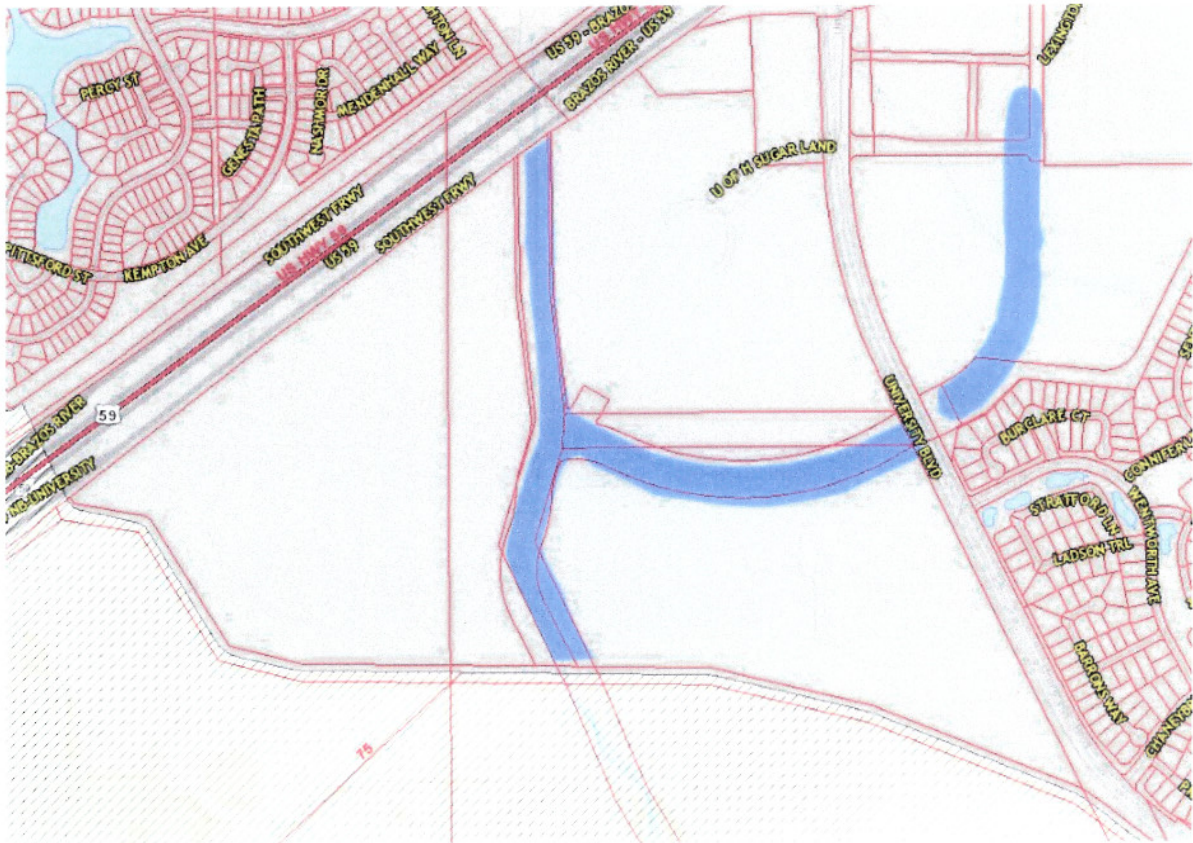


Figure 5 – Site Map

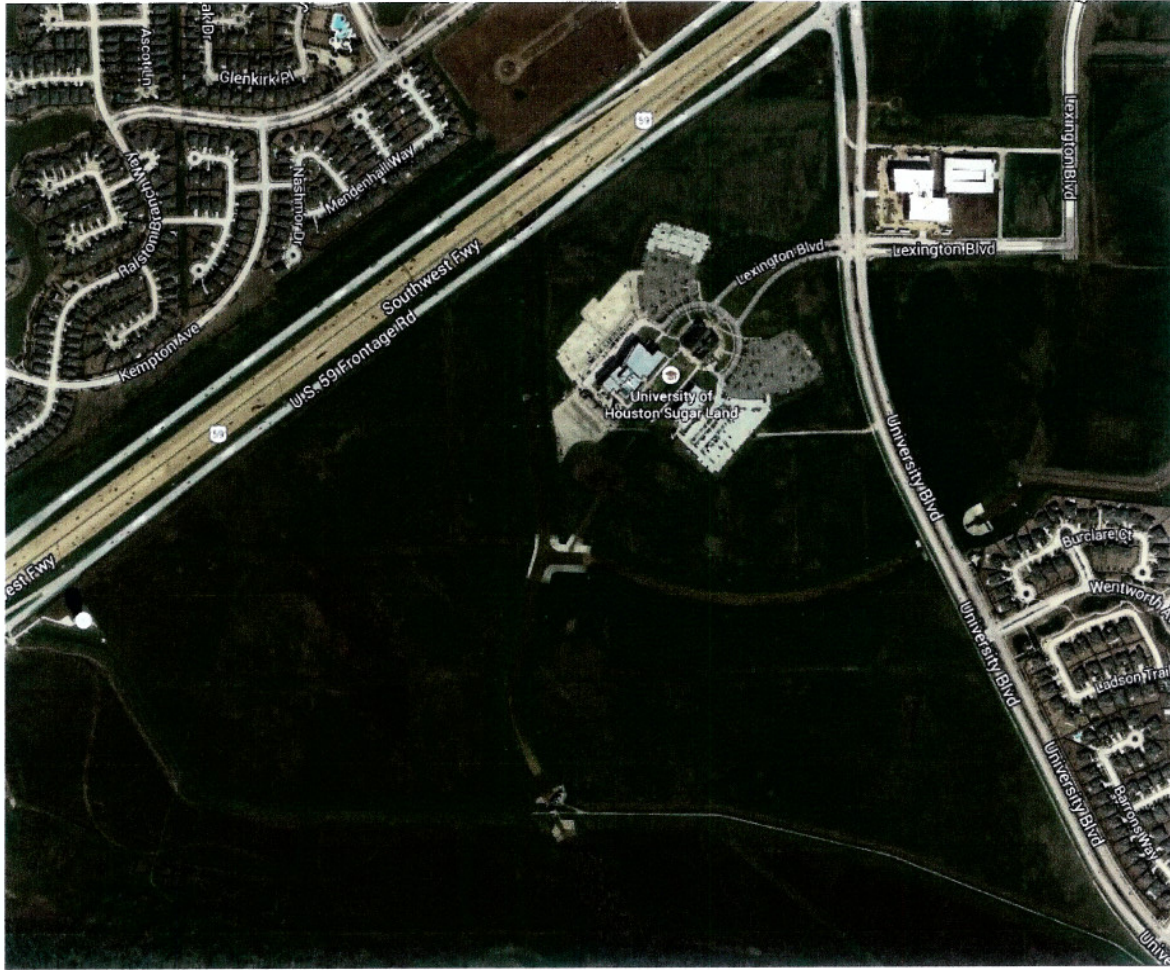


Figure 6 – Site Aerial Image

Observations

Although large, the site is split into three parts by a pair of drainage ditches shown in figure 6. This leaves the parcels likely to be provided for this facility largely undeveloped and in need of infrastructure. Connector roads would be needed to either the Highway 59 frontage road or University Blvd. TxDOT is currently planning additional entrance and exit ramps from Highway 59 in this area. Final placement of these ramps would affect the location of the connector roads to maximize efficiency.

The site lies in Ft. Bend County MUD #139 serviced by the City of Sugar Land. Electrical utilities are also nearby.

Concerns

This site would require a cooperative effort between the County and the University of Houston. The details of this agreement are currently vague and difficult to plan for. Additionally the restrictions placed on the use of this site will require the county to construct the maintenance facility elsewhere. This split-site configuration carries additional costs of construction as well as preventing the transit department from being co-located in a single facility.

Flood Plain

The site lies in an area protected by a levee system as shown by the gray shaded area.



Figure 7 – Flood Plain Map

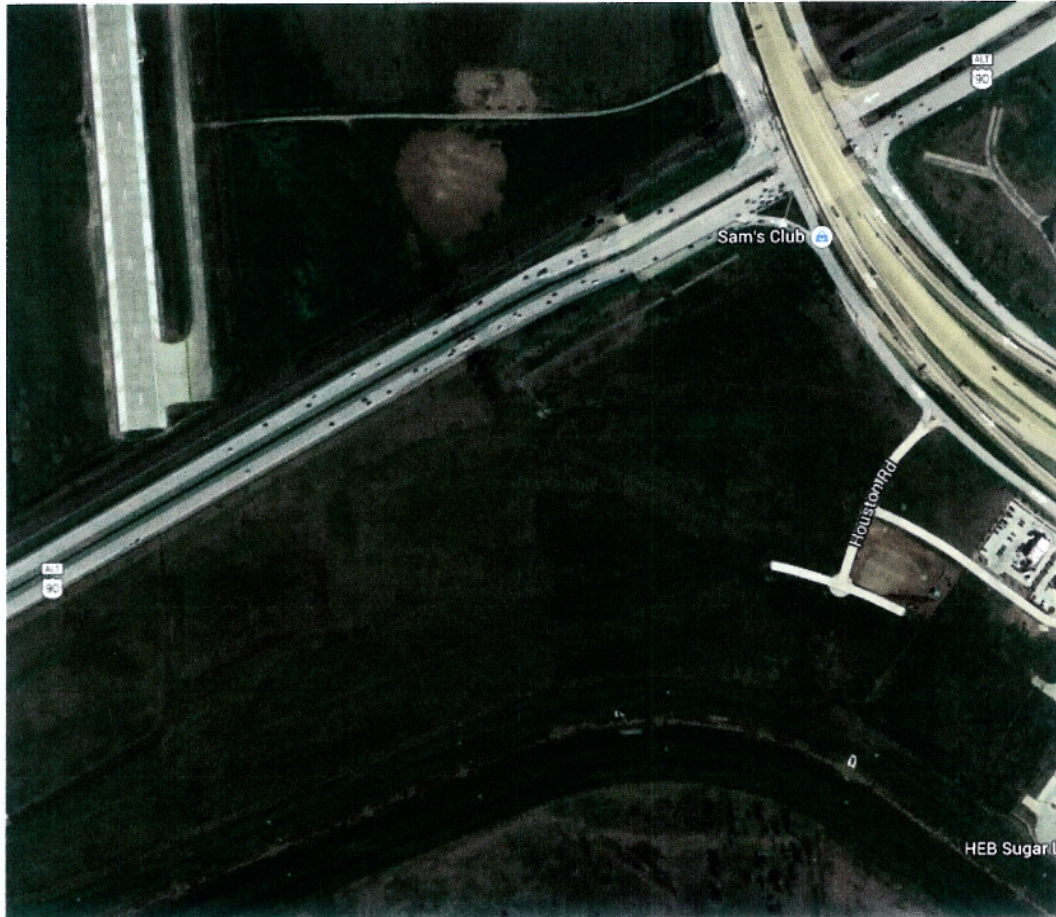


Figure 9 - Site Aerial Image

Observations

The property is currently not up for sale and one of the parcels would need to be split, or the county would have to acquire additional land in the direct avigation area that would be difficult to develop in the future.

There is currently no direct access from the site to either Hwy 6 or Hwy 90. The county would need to petition TxDOT for direct access, or create surface street infrastructure to access one or both of these thoroughfares.

Electric utilities exist on the site. A line of poles follows the contoured edge adjacent to the state owned parcel. Water and sewer utilities are nearby on both sides currently serving adjacent developed properties. This site is a greenfield site and would require development of a complete installation including a fuel depot.

Flood Plain

The site lies outside of any currently defined flood zone.

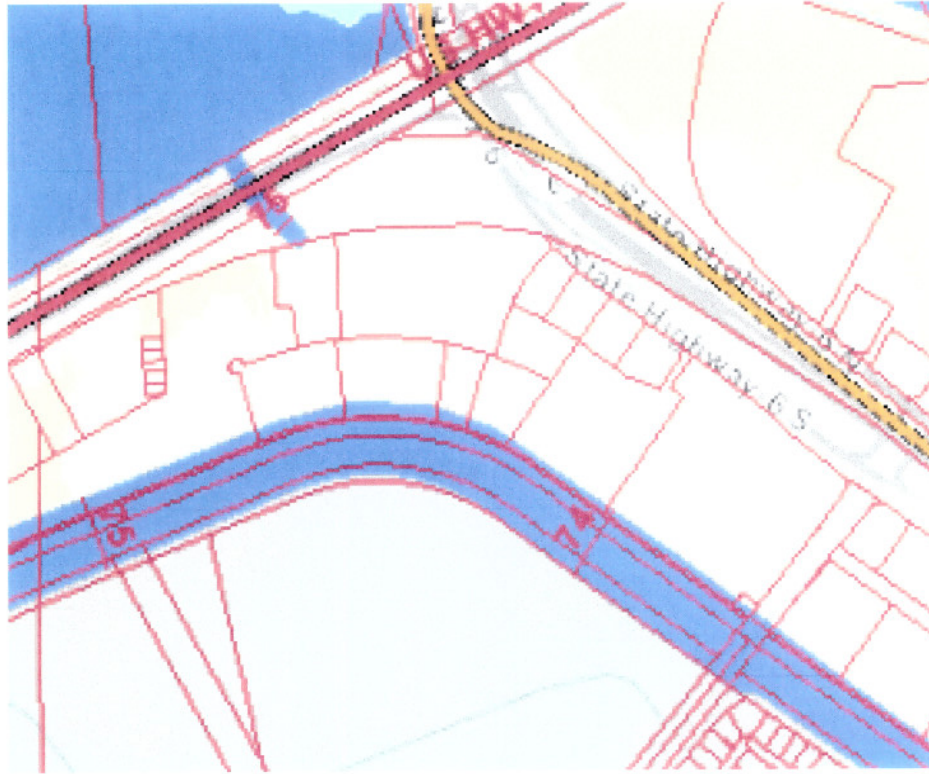


Figure 10 - Flood Plain Map

Access

Table 1 shows the minimum distance from the intersection the county would be allowed to create a driveway. The distances available at this site allow for full compliance with this table. In fact the driveway could be as much as 1000' away from Hwy 90 on the Hwy 6 frontage road and as much as 3000' away from Hwy 6 on Hwy 90.

Minimum Connection Spacing Criteria for Frontage Roads ⁽¹⁾⁽²⁾		
	Minimum Connection Spacing (feet)	
Posted Speed (mph)	One-Way Frontage Roads	Two-Way Frontage Roads
≤ 30	200	200
35	250	300
40	305	360
45	360	435
≥ 50	425	510
(1) Distances are for passenger cars on level grade. These distances may be adjusted for downgrades and/or significant truck traffic. Where present or projected traffic operations indicate specific needs, consideration may be given to intersection sight distance and operational gap acceptance measurement adjustments.		
(2) When these values are not attainable, refer to the variance process as described in Chapter 2, Section 5.		

Table 1- TxDOT Connection Spacing

Concerns

- The property is likely to be expensive to obtain.
- Even with driveways being allowed on both Hwy 90 and Hwy 6, the available directions of travel are limited. In order to go northbound on Hwy 6 a bus will have to travel southbound, approximately 0.4 miles to University Dr. to U-Turn and head north. Buses wishing to travel westbound on Hwy 90 will have similar issues but without the benefit of a U-Turn lane they will be subjected to as many as four traffic lights to make the U-Turn. TxDOT would have to approve a connection between the east and westbound lanes of Hwy 90 to mitigate this condition. The county would likely bear this cost.
- Buses travelling north on Hwy 6 are subject to delays and inherent safety issues from train traffic.
- The City of Sugar Land controls the zoning

Site 4- SE Corner, Bamore and Hwy 59

Description of Site

This site is located south of Highway 59 and west of Highway 36 in Rosenberg. The site is part of a 50 acre tract currently owned by the county. Requiring only 20 acres the transit facility could comfortably occupy a portion of the land closest to Highway 59 for ease of access. The site is near the County's fuel depot which includes distribution facilities as well as bulk fuel storage.



Figure 11 – Site Map



Figure 12 – Site Aerial Image

Observations

The property is currently owned by the county so acquisition and purchase would be trivial. The current access to the property from Highway 59 will improve greatly as the Bamore Road extension project completes along with the I-69 upgrade project.

Electric utilities exist on the site. A line of poles follows the the drainage ditch on the southwest side of the property. The property resides in Ft. Bend MUD #148 which provides water and sewer through the City of Rosenberg.

Flood Plain

The site lies outside of any currently defined flood zone.



Figure 13 – Flood Plain Map

Chapter- 4 Site Layout

Three of the four sites allow for a combined operation including an administration building, a maintenance facility and bus parking and servicing areas. Figure 14 shows a typical representation of this type of facility. Site #2 precludes all of this except for the office building and associated employee parking. The remaining facilities would be located on the sister site.

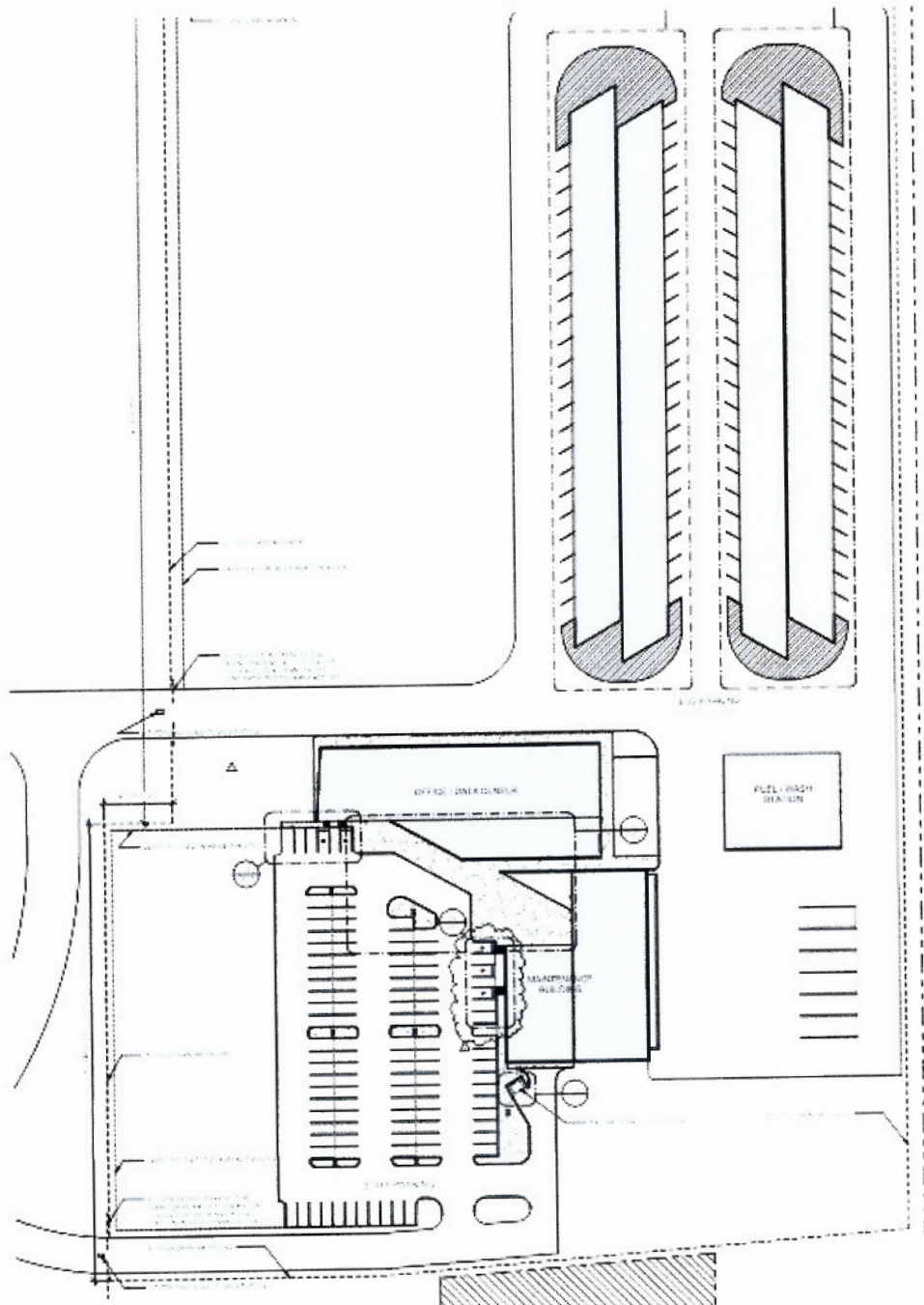


Figure 14 – Typical Site Layout

APPENDIX B - TITLE VI DEMOGRAPHIC ANYALYSIS

Fort Bend County Demographic Data - Minority, Age 65 and Older, Disability Status, and Low Income

Source: ACS 5-Year 2023

LOCATION	TOTAL POP	HISPANIC OR LATINO	% HISPANIC OR LATINO	TOTAL MINORITY (NON WHITE POP)	% MINORITY	POP AGED 65+	% AGED 65+	TOTAL POP AGED 5+	POP WITH DISABILITY AGED 5+	% WITH DISABILITY AGED 5+	HOUSEHOL DS TOTAL	HH INCOME BELOW POV - PAST 12 MONTHS	% HH BELOW POV - PAST 12 MONTHS
Total	859,721	210,272	24.46%	541,383	62.97%	104,644	12.17%	806,442	64,676	8.02%	852,993	61,205	7.18%
Census Tract 6701.01	6,123	3,827	62.50%	5,173	84.48%	742	12.12%	5,781	574	9.93%	6,102	1,053	17.26%
Census Tract 6701.02	3,348	1,238	36.98%	2,839	84.80%	471	14.07%	3,179	274	8.62%	3,184	252	7.91%
Census Tract 6702.01	1,687	129	7.65%	1,657	98.22%	282	16.72%	1,679	142	8.46%	1,687	44	2.61%
Census Tract 6702.02	5,107	2,252	44.10%	4,296	84.12%	796	15.59%	4,821	493	10.23%	5,107	1,119	21.91%
Census Tract 6703	3,429	965	28.14%	3,231	94.23%	554	16.16%	3,365	414	12.30%	3,429	1,011	29.48%
Census Tract 6704	4,462	1,370	30.70%	3,641	81.60%	550	12.33%	4,281	416	9.72%	4,450	354	7.96%
Census Tract 6705	5,309	1,861	35.05%	4,690	88.34%	678	12.77%	4,973	643	12.93%	5,299	359	6.77%
Census Tract 6706.02	1,894	598	31.57%	1,687	89.07%	234	12.35%	1,789	267	14.92%	1,894	351	18.53%
Census Tract 6706.03	5,861	1,442	24.60%	5,345	91.20%	1,148	19.59%	5,017	850	16.94%	5,861	111	1.89%
Census Tract 6706.04	4,413	910	20.62%	3,944	89.37%	371	8.41%	4,065	524	12.89%	4,398	408	9.28%
Census Tract 6707	8,620	1,885	21.87%	6,350	73.67%	1,121	13.00%	7,680	1,035	13.48%	8,583	852	9.93%
Census Tract 6708.01	4,179	3,476	83.18%	3,549	84.92%	124	2.97%	4,109	447	10.88%	4,179	272	6.51%
Census Tract 6708.02	4,643	617	13.29%	4,031	86.82%	487	10.49%	4,423	383	8.66%	4,643	393	8.46%
Census Tract 6708.03	2,782	1,649	59.27%	2,431	87.38%	344	12.37%	2,600	266	10.23%	2,782	32	1.15%
Census Tract 6708.04	3,770	724	19.20%	3,516	93.26%	340	9.02%	3,441	217	6.31%	3,184	72	2.26%
Census Tract 6709.02	9,910	2,069	20.88%	8,259	83.34%	619	6.25%	9,461	515	5.44%	9,910	814	8.21%
Census Tract 6709.03	8,964	404	4.51%	7,051	78.66%	945	10.54%	8,270	634	7.67%	8,964	875	9.76%
Census Tract 6709.04	5,149	630	12.24%	3,962	76.95%	942	18.29%	4,759	402	8.45%	5,149	62	1.20%
Census Tract 6710.01	5,268	904	17.16%	2,272	43.13%	1,581	30.01%	5,007	694	13.86%	5,162	133	2.58%
Census Tract 6710.02	5,694	1,322	23.22%	4,192	73.62%	1,182	20.76%	5,530	871	15.75%	5,694	400	7.02%
Census Tract 6711.01	2,413	649	26.90%	1,958	81.14%	361	14.96%	2,269	214	9.43%	2,386	73	3.06%
Census Tract 6711.02	5,860	2,793	47.66%	4,723	80.60%	758	12.94%	5,406	358	6.62%	5,672	777	13.70%
Census Tract 6712	5,797	2,125	36.66%	4,721	81.44%	700	12.08%	5,545	807	14.55%	5,737	174	3.03%
Census Tract 6713	3,948	1,241	31.43%	3,348	84.80%	524	13.27%	3,603	458	12.71%	3,948	625	15.83%
Census Tract 6714.01	1,906	691	36.25%	1,704	89.40%	225	11.80%	1,693	303	17.90%	1,882	101	5.37%
Census Tract 6714.02	6,209	937	15.09%	5,109	82.28%	708	11.40%	6,050	470	7.77%	6,207	990	15.95%
Census Tract 6715.01	7,876	1,116	14.17%	5,385	68.37%	1,351	17.15%	7,345	819	11.15%	7,684	779	10.14%
Census Tract 6715.02	1,551	131	8.45%	1,341	86.46%	288	18.57%	1,503	70	4.66%	1,551	50	3.22%
Census Tract 6716.01	6,139	822	13.39%	3,729	60.74%	1,111	18.10%	5,865	368	6.27%	6,139	176	2.87%
Census Tract 6716.02	3,165	270	8.53%	1,601	50.58%	549	17.35%	2,983	225	7.54%	3,165	122	3.85%
Census Tract 6717	4,467	620	13.88%	1,882	42.13%	1,800	40.30%	4,371	833	19.06%	4,467	237	5.31%
Census Tract 6718	4,386	1,271	28.98%	3,131	71.39%	446	10.17%	4,075	234	5.74%	4,386	336	7.66%
Census Tract 6719	4,000	796	19.90%	2,004	50.10%	794	19.85%	3,769	598	15.87%	4,000	242	6.05%
Census Tract 6720.02	6,577	1,195	18.17%	4,603	69.99%	598	9.09%	6,057	594	9.81%	6,577	694	10.55%
Census Tract 6720.03	1,665	225	13.51%	845	50.75%	186	11.17%	1,509	69	4.57%	1,654	525	31.74%
Census Tract 6720.04	6,036	1,722	28.53%	5,303	87.86%	1,037	17.18%	5,739	596	10.39%	6,028	601	9.97%
Census Tract 6721	3,826	391	10.22%	1,576	41.19%	1,594	41.66%	3,711	590	15.90%	3,719	244	6.56%
Census Tract 6722.01	2,218	362	16.32%	1,602	72.23%	358	16.14%	2,160	61	2.82%	2,218	48	2.16%
Census Tract 6722.02	2,514	540	21.48%	738	29.36%	483	19.21%	2,398	368	15.35%	2,514	309	12.29%
Census Tract 6723.03	2,828	353	12.48%	2,091	73.94%	256	9.05%	2,701	142	5.26%	2,828	272	9.62%

Census Tract 6723.04	4,786	1,996	41.70%	2,719	56.81%	619	12.93%	4,584	559	12.19%	4,786	221	4.62%
Census Tract 6723.05	5,372	363	6.76%	3,470	64.59%	644	11.99%	5,080	384	7.56%	5,372	618	11.50%
Census Tract 6723.06	3,104	719	23.16%	724	23.32%	574	18.49%	2,892	209	7.23%	3,104	272	8.76%
Census Tract 6724.01	2,686	789	29.37%	2,158	80.34%	591	22.00%	2,644	136	5.14%	2,686	536	19.96%
Census Tract 6724.02	6,963	3,517	50.51%	4,798	68.91%	572	8.21%	6,697	296	4.42%	6,963	619	8.89%
Census Tract 6725	7,271	2,155	29.64%	5,735	78.87%	1,635	22.49%	6,855	355	5.18%	7,271	1,241	17.07%
Census Tract 6726.02	6,569	1,661	25.29%	5,405	82.28%	655	9.97%	6,111	937	15.33%	6,564	1,385	21.10%
Census Tract 6726.03	2,643	865	32.73%	2,243	84.87%	279	10.56%	2,562	192	7.49%	2,643	271	10.25%
Census Tract 6726.04	7,741	4,297	55.51%	4,877	63.00%	1,062	13.72%	7,329	278	3.79%	7,741	646	8.35%
Census Tract 6727.01	5,464	2,064	37.77%	5,294	96.89%	726	13.29%	5,366	403	7.51%	5,443	628	11.54%
Census Tract 6727.02	8,611	750	8.71%	4,723	54.85%	567	6.58%	7,309	594	8.13%	8,584	648	7.55%
Census Tract 6727.03	7,833	1,755	22.41%	6,233	79.57%	1,173	14.98%	7,547	703	9.31%	7,833	410	5.23%
Census Tract 6728.01	4,891	879	17.97%	3,152	64.44%	854	17.46%	4,676	517	11.06%	4,891	76	1.55%
Census Tract 6728.02	2,664	104	3.90%	2,051	76.99%	234	8.78%	2,592	162	6.25%	2,621	103	3.93%
Census Tract 6729.01	18,067	1,160	6.42%	14,858	82.24%	1,421	7.87%	16,553	698	4.22%	18,067	267	1.48%
Census Tract 6729.02	9,174	1,697	18.50%	7,743	84.40%	1,119	12.20%	8,484	587	6.92%	9,174	239	2.61%
Census Tract 6729.03	18,232	5,764	31.61%	13,390	73.44%	997	5.47%	16,552	1,006	6.08%	18,179	1,000	5.50%
Census Tract 6729.04	9,461	2,105	22.25%	8,612	91.03%	264	2.79%	8,580	170	1.98%	9,461	231	2.44%
Census Tract 6729.05	6,766	1,435	21.21%	4,711	69.63%	629	9.30%	6,454	450	6.97%	6,720	530	7.89%
Census Tract 6729.06	6,565	1,831	27.89%	4,566	69.55%	840	12.80%	6,138	375	6.11%	6,565	497	7.57%
Census Tract 6729.07	12,030	1,509	12.54%	9,184	76.34%	561	4.66%	10,847	704	6.49%	12,030	2,209	18.36%
Census Tract 6730.04	2,962	607	20.49%	932	31.47%	441	14.89%	2,782	138	4.96%	2,962	69	2.33%
Census Tract 6730.05	6,294	2,386	37.91%	3,502	55.64%	654	10.39%	5,949	258	4.34%	6,250	305	4.88%
Census Tract 6730.06	5,688	1,010	17.76%	2,093	36.80%	793	13.94%	5,608	338	6.03%	5,688	214	3.76%
Census Tract 6730.07	2,808	472	16.81%	1,577	56.16%	87	3.10%	2,756	63	2.29%	2,800	137	4.89%
Census Tract 6730.08	2,999	519	17.31%	1,157	38.58%	285	9.50%	2,905	102	3.51%	2,999	164	5.47%
Census Tract 6730.09	6,658	458	6.88%	3,462	52.00%	464	6.97%	6,269	223	3.56%	6,658	737	11.07%
Census Tract 6730.10	3,532	276	7.81%	1,563	44.25%	450	12.74%	3,358	76	2.26%	3,532	154	4.36%
Census Tract 6731.03	3,563	358	10.05%	1,319	37.02%	583	16.36%	3,500	260	7.43%	3,563	47	1.32%
Census Tract 6731.04	8,661	2,217	25.60%	4,970	57.38%	632	7.30%	8,196	418	5.10%	8,661	260	3.00%
Census Tract 6731.05	4,590	939	20.46%	3,235	70.48%	251	5.47%	4,273	332	7.77%	4,590	219	4.77%
Census Tract 6731.06	5,514	1,157	20.98%	2,876	52.16%	1,227	22.25%	5,350	663	12.39%	5,514	342	6.20%
Census Tract 6731.07	6,213	1,184	19.06%	2,278	36.67%	629	10.12%	5,963	512	8.59%	6,213	308	4.96%
Census Tract 6731.08	18,306	2,321	12.68%	10,471	57.20%	1,085	5.93%	17,283	1,053	6.09%	18,168	308	1.70%
Census Tract 6731.09	10,899	1,763	16.18%	7,263	66.64%	720	6.61%	10,415	510	4.90%	10,899	678	6.22%
Census Tract 6731.10	8,607	3,017	35.05%	4,918	57.14%	387	4.50%	8,385	94	1.12%	8,607	120	1.39%
Census Tract 6731.11	10,739	1,649	15.36%	6,816	63.47%	1,053	9.81%	10,146	288	2.84%	10,739	141	1.31%
Census Tract 6731.12	9,051	1,594	17.61%	3,931	43.43%	786	8.68%	8,351	483	5.78%	9,051	1,048	11.58%
Census Tract 6731.13	8,271	3,819	46.17%	5,211	63.00%	484	5.85%	7,293	153	2.10%	8,271	1,368	16.54%

Census Tract 6732.01	13,486	2,257	16.74%	5,419	40.18%	861	6.38%	11,831	524	4.43%	13,486	804	5.96%
Census Tract 6732.02	34,854	9,160	26.28%	15,766	45.23%	2,983	8.56%	33,034	2,452	7.42%	34,767	1,989	5.72%
Census Tract 6733	9,328	1,082	11.60%	1,990	21.33%	2,157	23.12%	8,957	479	5.35%	9,328	245	2.63%
Census Tract 6734.01	8,957	2,914	32.53%	5,115	57.11%	825	9.21%	8,732	211	2.42%	8,950	680	7.60%
Census Tract 6734.02	8,983	2,086	23.22%	4,886	54.39%	1,446	16.10%	8,186	1,651	20.17%	8,983	53	0.59%
Census Tract 6734.03	10,450	2,523	24.14%	5,879	56.26%	787	7.53%	9,263	605	6.53%	10,439	455	4.36%
Census Tract 6734.04	10,960	3,064	27.96%	4,095	37.36%	1,010	9.22%	9,913	568	5.73%	10,942	172	1.57%
Census Tract 6735.01	10,955	2,844	25.96%	6,592	60.17%	1,056	9.64%	9,980	868	8.70%	10,955	1,140	10.41%
Census Tract 6735.02	4,940	982	19.88%	418	8.46%	1,279	25.89%	4,780	433	9.06%	4,940	160	3.24%
Census Tract 6736	7,013	1,518	21.65%	1,314	18.74%	1,846	26.32%	6,798	429	6.31%	7,013	700	9.98%
Census Tract 6737	2,893	1,102	38.09%	1,715	59.28%	289	9.99%	2,893	0	0.00%	19	0	0.00%
Census Tract 6738.01	3,112	201	6.46%	1,785	57.36%	288	9.25%	2,610	256	9.81%	3,112	131	4.21%
Census Tract 6738.02	5,879	657	11.18%	4,146	70.52%	767	13.05%	5,631	394	7.00%	5,879	471	8.01%
Census Tract 6739.02	11,929	470	3.94%	11,022	92.40%	1,454	12.19%	11,292	663	5.87%	11,929	595	4.99%
Census Tract 6739.03	3,240	109	3.36%	2,269	70.03%	684	21.11%	3,138	532	16.95%	3,240	101	3.12%
Census Tract 6739.04	5,482	663	12.09%	3,490	63.66%	784	14.30%	5,283	241	4.56%	5,482	164	2.99%
Census Tract 6740.01	2,422	303	12.51%	1,379	56.94%	534	22.05%	2,293	298	13.00%	2,422	18	0.74%
Census Tract 6740.02	4,709	576	12.23%	3,181	67.55%	1,025	21.77%	4,636	613	13.22%	4,709	482	10.24%
Census Tract 6741	6,161	723	11.74%	2,652	43.04%	1,768	28.70%	5,820	500	8.59%	6,161	474	7.69%
Census Tract 6742	4,944	534	10.80%	2,655	53.70%	935	18.91%	4,747	272	5.73%	4,944	96	1.94%
Census Tract 6743.01	3,103	599	19.30%	2,127	68.55%	608	19.59%	2,828	140	4.95%	3,097	0	0.00%
Census Tract 6743.02	5,440	407	7.48%	3,705	68.11%	952	17.50%	5,350	363	6.79%	5,413	24	0.44%
Census Tract 6744.01	8,303	470	5.66%	5,564	67.01%	1,339	16.13%	8,075	486	6.02%	8,303	20	0.24%
Census Tract 6744.02	5,090	119	2.34%	4,341	85.28%	289	5.68%	4,877	231	4.74%	5,090	0	0.00%
Census Tract 6744.03	4,497	614	13.65%	3,604	80.14%	352	7.83%	4,244	112	2.64%	4,497	52	1.16%
Census Tract 6744.04	6,815	288	4.23%	5,565	81.66%	480	7.04%	6,415	201	3.13%	6,765	177	2.62%
Census Tract 6745.03	4,368	506	11.58%	2,272	52.01%	505	11.56%	4,210	199	4.73%	4,368	11	0.25%
Census Tract 6745.04	10,136	1,229	12.13%	4,744	46.80%	942	9.29%	9,108	408	4.48%	10,017	294	2.94%
Census Tract 6745.05	9,989	1,237	12.38%	3,453	34.57%	556	5.57%	9,281	208	2.24%	9,989	92	0.92%
Census Tract 6745.06	5,425	3,117	57.46%	3,676	67.76%	581	10.71%	4,969	660	13.28%	5,425	383	7.06%
Census Tract 6745.07	11,888	1,944	16.35%	8,922	75.05%	1,551	13.05%	11,191	1,197	10.70%	11,888	990	8.33%
Census Tract 6745.08	4,555	583	12.80%	2,939	64.52%	539	11.83%	4,343	320	7.37%	4,555	36	0.79%
Census Tract 6746.01	3,226	471	14.60%	792	24.55%	641	19.87%	3,060	314	10.26%	3,226	123	3.81%
Census Tract 6746.02	7,994	1,180	14.76%	2,825	35.34%	913	11.42%	7,502	601	8.01%	7,994	378	4.73%
Census Tract 6746.03	6,275	2,046	32.61%	2,418	38.53%	488	7.78%	6,078	815	13.41%	6,275	268	4.27%
Census Tract 6746.04	5,025	706	14.05%	3,467	69.00%	463	9.21%	4,766	788	16.53%	5,025	47	0.94%
Census Tract 6747.01	3,563	543	15.24%	2,564	71.96%	495	13.89%	3,493	155	4.44%	3,563	100	2.81%
Census Tract 6747.02	14,174	3,631	25.62%	7,959	56.15%	3,106	21.91%	13,416	1,859	13.86%	13,166	749	5.69%
Census Tract 6748	6,003	2,964	49.38%	3,362	56.01%	668	11.13%	5,694	606	10.64%	5,997	672	11.21%
Census Tract 6749	5,648	3,706	65.62%	3,727	65.99%	739	13.08%	5,410	767	14.18%	5,540	1,000	18.05%
Census Tract 6750	3,411	2,525	74.03%	2,343	68.69%	275	8.06%	3,221	266	8.26%	3,403	1,005	29.53%
Census Tract 6751.01	7,004	3,493	49.87%	4,085	58.32%	1,102	15.73%	6,709	749	11.16%	7,004	1,007	14.38%
Census Tract 6751.02	4,915	3,406	69.30%	3,395	69.07%	672	13.67%	4,267	640	15.00%	4,820	984	20.41%
Census Tract 6752	5,419	4,121	76.05%	3,270	60.34%	798	14.73%	5,128	730	14.24%	5,419	1,787	32.98%
Census Tract 6753	5,413	3,989	73.69%	2,879	53.19%	659	12.17%	5,120	785	15.33%	5,366	1,082	20.16%
Census Tract 6754.01	8,544	4,776	55.90%	3,954	46.28%	999	11.69%	7,858	742	9.44%	8,544	289	3.38%
Census Tract 6754.02	2,901	2,171	74.84%	1,785	61.53%	366	12.62%	2,778	286	10.30%	2,901	240	8.27%
Census Tract 6755.01	7,803	4,400	56.39%	4,666	59.80%	443	5.68%	7,015	278	3.96%	7,658	176	2.30%
Census Tract 6755.02	19,038	3,030	15.92%	14,828	77.89%	1,979	10.39%	17,639	1,414	8.02%	19,016	1,040	5.47%
Census Tract 6755.03	7,995	779	9.74%	5,571	69.68%	736	9.21%	7,367	370	5.02%	7,995	588	7.35%
Census Tract 6756	8,608	3,436	39.92%	3,047	35.40%	897	10.42%	7,774	758	9.75%	8,528	1,586	18.60%
Census Tract 6757.01	3,085	1,440	46.68%	936	30.34%	675	21.88%	2,950	485	16.44%	3,085	351	11.38%

Census Tract 6757.02	3,555	1,275	35.86%	1,272	35.78%	558	15.70%	3,385	368	10.87%	3,503	417	11.90%
Census Tract 6758	3,575	1,620	45.31%	1,828	51.13%	835	23.36%	3,488	469	13.45%	3,572	699	19.57%

APPENDIX C - LANGUAGE SPOKEN AT HOME IN FORT BEND COUNTY

Fort Bend County Demographic Data - Limited Language Households by Language Spoken at Home

Source: ACS 5-Year 2023

LOCATION	SPANISH		OTHER INDO-EUROPEAN		ASIAN AND PACIFIC ISLAND		OTHER LANGUAGES		ALL NON-ENGLISH	
	HH W/ LIMITED ENGLISH	% OF HOUSEHOLDS	HH W/ LIMITED ENGLISH	% OF HOUSEHOLDS	HH W/ LIMITED ENGLISH	% OF HOUSEHOLDS	HH W/ LIMITED ENGLISH	% OF HOUSEHOLDS	HH W/ LIMITED ENGLISH	% OF HOUSEHOLDS
	137,109	17.00%	69,375	8.60%	92,729	11.50%	29,182	3.62%	328,395	40.72%
Census Tract 6701.01	2,834	49.02%	0	0.00%	79	1.37%	0	0.00%	2,913	50.39%
Census Tract 6701.02	1,123	35.33%	0	0.00%	0	0.00%	0	0.00%	1,123	35.33%
Census Tract 6702.01	104	6.19%	5	0.30%	21	1.25%	0	0.00%	130	7.74%
Census Tract 6702.02	2,007	41.63%	14	0.29%	0	0.00%	72	1.49%	2,093	43.41%
Census Tract 6703	826	24.55%	0	0.00%	9	0.27%	0	0.00%	835	24.81%
Census Tract 6704	1,126	26.30%	38	0.89%	0	0.00%	138	3.22%	1,302	30.41%
Census Tract 6705	1,237	24.87%	0	0.00%	152	3.06%	105	2.11%	1,494	30.04%
Census Tract 6706.02	562	31.41%	0	0.00%	0	0.00%	159	8.89%	721	40.30%
Census Tract 6706.03	685	13.65%	0	0.00%	42	0.84%	139	2.77%	866	17.26%
Census Tract 6706.04	727	17.88%	68	1.67%	34	0.84%	0	0.00%	829	20.39%
Census Tract 6707	1,328	17.29%	727	9.47%	356	4.64%	404	5.26%	2,815	36.65%
Census Tract 6708.01	3,246	79.00%	0	0.00%	0	0.00%	0	0.00%	3,246	79.00%
Census Tract 6708.02	464	10.49%	0	0.00%	29	0.66%	94	2.13%	587	13.27%
Census Tract 6708.03	1,286	49.46%	0	0.00%	0	0.00%	0	0.00%	1,286	49.46%
Census Tract 6708.04	355	10.32%	0	0.00%	0	0.00%	27	0.78%	382	11.10%
Census Tract 6709.02	1,678	17.74%	230	2.43%	290	3.07%	298	3.15%	2,496	26.38%
Census Tract 6709.03	153	1.85%	404	4.89%	1,289	15.59%	275	3.33%	2,121	25.65%
Census Tract 6709.04	441	9.27%	305	6.41%	656	13.78%	163	3.43%	1,565	32.89%
Census Tract 6710.01	469	9.37%	125	2.50%	348	6.95%	0	0.00%	942	18.81%
Census Tract 6710.02	1,027	18.57%	221	4.00%	94	1.70%	30	0.54%	1,372	24.81%
Census Tract 6711.01	542	23.89%	7	0.31%	54	2.38%	38	1.67%	641	28.25%
Census Tract 6711.02	1,442	26.67%	166	3.07%	332	6.14%	16	0.30%	1,956	36.18%
Census Tract 6712	1,357	24.47%	30	0.54%	173	3.12%	206	3.72%	1,766	31.85%
Census Tract 6713	946	26.26%	43	1.19%	562	15.60%	145	4.02%	1,696	47.07%
Census Tract 6714.01	466	27.53%	251	14.83%	430	25.40%	0	0.00%	1,147	67.75%
Census Tract 6714.02	726	12.00%	1,245	20.58%	1,132	18.71%	178	2.94%	3,281	54.23%
Census Tract 6715.01	656	8.93%	551	7.50%	2,370	32.27%	71	0.97%	3,648	49.67%
Census Tract 6715.02	71	4.72%	132	8.78%	519	34.53%	27	1.80%	749	49.83%
Census Tract 6716.01	308	5.25%	686	11.70%	739	12.60%	0	0.00%	1,733	29.55%
Census Tract 6716.02	106	3.55%	172	5.77%	704	23.60%	112	3.75%	1,094	36.67%
Census Tract 6717	375	8.58%	213	4.87%	507	11.60%	0	0.00%	1,095	25.05%
Census Tract 6718	991	24.32%	169	4.15%	559	13.72%	96	2.36%	1,815	44.54%

Census Tract 6719	541	14.35%	120	3.18%	460	12.20%	122	3.24%	1,243	32.98%
Census Tract 6720.02	601	9.92%	510	8.42%	1,277	21.08%	157	2.59%	2,545	42.02%
Census Tract 6720.03	45	2.98%	72	4.77%	562	37.24%	265	17.56%	944	62.56%
Census Tract 6720.04	1,235	21.52%	559	9.74%	1,276	22.23%	120	2.09%	3,190	55.58%
Census Tract 6721	294	7.92%	247	6.66%	795	21.42%	34	0.92%	1,370	36.92%
Census Tract 6722.01	283	13.10%	350	16.20%	474	21.94%	73	3.38%	1,180	54.63%
Census Tract 6722.02	270	11.26%	46	1.92%	92	3.84%	39	1.63%	447	18.64%
Census Tract 6723.03	627	23.21%	522	19.33%	640	23.69%	98	3.63%	1,887	69.86%
Census Tract 6723.04	1,761	38.42%	394	8.60%	747	16.30%	205	4.47%	3,107	67.78%
Census Tract 6723.05	346	6.81%	677	13.33%	1,757	34.59%	78	1.54%	2,858	56.26%
Census Tract 6723.06	284	9.82%	133	4.60%	88	3.04%	0	0.00%	505	17.46%
Census Tract 6724.01	722	27.31%	404	15.28%	532	20.12%	26	0.98%	1,684	63.69%
Census Tract 6724.02	3,070	45.84%	252	3.76%	694	10.36%	0	0.00%	4,016	59.97%
Census Tract 6725	1,864	27.19%	1,234	18.00%	704	10.27%	633	9.23%	4,435	64.70%
Census Tract 6726.02	1,451	23.74%	245	4.01%	721	11.80%	1,022	16.72%	3,439	56.28%
Census Tract 6726.03	804	31.38%	0	0.00%	416	16.24%	301	11.75%	1,521	59.37%
Census Tract 6726.04	2,444	33.35%	53	0.72%	303	4.13%	688	9.39%	3,488	47.59%
Census Tract 6727.01	1,732	32.28%	1,002	18.67%	229	4.27%	287	5.35%	3,250	60.57%
Census Tract 6727.02	243	3.32%	224	3.06%	368	5.03%	2,446	33.47%	3,281	44.89%
Census Tract 6727.03	1,213	16.07%	1,194	15.82%	2,072	27.45%	489	6.48%	4,968	65.83%
Census Tract 6728.01	534	11.42%	1,014	21.69%	688	14.71%	368	7.87%	2,604	55.69%
Census Tract 6728.02	146	5.63%	560	21.60%	148	5.71%	161	6.21%	1,015	39.16%
Census Tract 6729.01	1,079	6.52%	7,344	44.37%	2,224	13.44%	842	5.09%	11,489	69.41%
Census Tract 6729.02	1,038	12.23%	1,038	12.23%	450	5.30%	1,299	15.31%	3,825	45.08%
Census Tract 6729.03	3,437	20.76%	2,491	15.05%	1,719	10.39%	993	6.00%	8,640	52.20%
Census Tract 6729.04	1,128	13.15%	1,185	13.81%	1,874	21.84%	1,133	13.21%	5,320	62.00%
Census Tract 6729.05	1,251	19.38%	669	10.37%	1,510	23.40%	950	14.72%	4,380	67.86%
Census Tract 6729.06	972	15.84%	517	8.42%	425	6.92%	708	11.53%	2,622	42.72%
Census Tract 6729.07	1,263	11.64%	758	6.99%	1,890	17.42%	2,268	20.91%	6,179	56.97%
Census Tract 6730.04	251	9.02%	180	6.47%	250	8.99%	0	0.00%	681	24.48%
Census Tract 6730.05	2,102	35.33%	282	4.74%	579	9.73%	175	2.94%	3,138	52.75%
Census Tract 6730.06	799	14.25%	674	12.02%	369	6.58%	73	1.30%	1,915	34.15%
Census Tract 6730.07	221	8.02%	371	13.46%	197	7.15%	142	5.15%	931	33.78%
Census Tract 6730.08	415	14.29%	128	4.41%	358	12.32%	133	4.58%	1,034	35.59%
Census Tract 6730.09	354	5.65%	649	10.35%	1,136	18.12%	262	4.18%	2,401	38.30%
Census Tract 6730.10	146	4.35%	631	18.79%	575	17.12%	33	0.98%	1,385	41.24%
Census Tract 6731.03	277	7.91%	469	13.40%	192	5.49%	44	1.26%	982	28.06%
Census Tract 6731.04	1,634	19.94%	804	9.81%	1,391	16.97%	393	4.80%	4,222	51.51%
Census Tract 6731.05	716	16.76%	472	11.05%	1,015	23.75%	111	2.60%	2,314	54.15%
Census Tract 6731.06	883	16.50%	411	7.68%	715	13.36%	0	0.00%	2,009	37.55%
Census Tract 6731.07	596	9.99%	527	8.84%	602	10.10%	145	2.43%	1,870	31.36%
Census Tract 6731.08	1,725	9.98%	1,193	6.90%	3,776	21.85%	690	3.99%	7,384	42.72%

Census Tract 6731.09	1,448	13.90%	740	7.11%	2,272	21.81%	219	2.10%	4,679	44.93%
Census Tract 6731.10	2,568	30.63%	1,015	12.10%	803	9.58%	181	2.16%	4,567	54.47%
Census Tract 6731.11	1,326	13.07%	1,206	11.89%	1,789	17.63%	67	0.66%	4,388	43.25%
Census Tract 6731.12	1,166	13.96%	475	5.69%	934	11.18%	376	4.50%	2,951	35.34%
Census Tract 6731.13	2,740	37.57%	930	12.75%	780	10.70%	0	0.00%	4,450	61.02%
Census Tract 6732.01	1,270	10.73%	659	5.57%	579	4.89%	608	5.14%	3,116	26.34%
Census Tract 6732.02	8,017	24.27%	1,905	5.77%	2,846	8.62%	274	0.83%	13,042	39.48%
Census Tract 6733	612	6.83%	256	2.86%	233	2.60%	88	0.98%	1,189	13.27%
Census Tract 6734.01	1,986	22.74%	55	0.63%	273	3.13%	105	1.20%	2,419	27.70%
Census Tract 6734.02	798	9.75%	274	3.35%	1,498	18.30%	621	7.59%	3,191	38.98%
Census Tract 6734.03	1,365	14.74%	283	3.06%	733	7.91%	471	5.08%	2,852	30.79%
Census Tract 6734.04	1,067	10.76%	109	1.10%	812	8.19%	76	0.77%	2,064	20.82%
Census Tract 6735.01	1,212	12.14%	1,534	15.37%	305	3.06%	405	4.06%	3,456	34.63%
Census Tract 6735.02	192	4.02%	24	0.50%	0	0.00%	21	0.44%	237	4.96%
Census Tract 6736	990	14.56%	412	6.06%	19	0.28%	0	0.00%	1,421	20.90%
Census Tract 6737	726	25.10%	20	0.69%	0	0.00%	38	1.31%	784	27.10%
Census Tract 6738.01	298	11.42%	696	26.67%	491	18.81%	18	0.69%	1,503	57.59%
Census Tract 6738.02	390	6.93%	1,158	20.56%	868	15.41%	182	3.23%	2,598	46.14%
Census Tract 6739.02	164	1.45%	3,800	33.65%	3,790	33.56%	113	1.00%	7,867	69.67%
Census Tract 6739.03	34	1.08%	831	26.48%	914	29.13%	0	0.00%	1,779	56.69%
Census Tract 6739.04	416	7.87%	411	7.78%	1,025	19.40%	138	2.61%	1,990	37.67%
Census Tract 6740.01	66	2.88%	176	7.68%	669	29.18%	0	0.00%	911	39.73%
Census Tract 6740.02	177	3.82%	302	6.51%	1,204	25.97%	31	0.67%	1,714	36.97%
Census Tract 6741	338	5.81%	788	13.54%	890	15.29%	368	6.32%	2,384	40.96%
Census Tract 6742	431	9.08%	666	14.03%	1,008	21.23%	110	2.32%	2,215	46.66%
Census Tract 6743.01	462	16.34%	556	19.66%	361	12.77%	34	1.20%	1,413	49.96%
Census Tract 6743.02	162	3.03%	516	9.64%	1,442	26.95%	0	0.00%	2,120	39.63%
Census Tract 6744.01	274	3.39%	1,492	18.48%	2,031	25.15%	326	4.04%	4,123	51.06%
Census Tract 6744.02	289	5.93%	862	17.67%	1,881	38.57%	0	0.00%	3,032	62.17%
Census Tract 6744.03	426	10.04%	1,054	24.84%	940	22.15%	215	5.07%	2,635	62.09%
Census Tract 6744.04	217	3.38%	1,006	15.68%	2,161	33.69%	507	7.90%	3,891	60.65%
Census Tract 6745.03	190	4.51%	103	2.45%	259	6.15%	32	0.76%	584	13.87%
Census Tract 6745.04	484	5.31%	622	6.83%	553	6.07%	0	0.00%	1,659	18.21%
Census Tract 6745.05	643	6.93%	180	1.94%	512	5.52%	0	0.00%	1,335	14.38%
Census Tract 6745.06	1,550	31.19%	14	0.28%	326	6.56%	0	0.00%	1,890	38.04%
Census Tract 6745.07	1,220	10.90%	852	7.61%	2,149	19.20%	139	1.24%	4,360	38.96%
Census Tract 6745.08	189	4.35%	116	2.67%	385	8.86%	59	1.36%	749	17.25%
Census Tract 6746.01	333	10.88%	159	5.20%	241	7.88%	31	1.01%	764	24.97%
Census Tract 6746.02	267	3.56%	592	7.89%	523	6.97%	86	1.15%	1,468	19.57%
Census Tract 6746.03	1,125	18.51%	187	3.08%	25	0.41%	53	0.87%	1,390	22.87%
Census Tract 6746.04	398	8.35%	271	5.69%	410	8.60%	385	8.08%	1,464	30.72%
Census Tract 6747.01	358	10.25%	334	9.56%	507	14.51%	111	3.18%	1,310	37.50%

Census Tract 6747.02	1,261	9.40%	2,023	15.08%	253	1.89%	284	2.12%	3,821	28.48%
Census Tract 6748	1,873	32.89%	9	0.16%	9	0.16%	0	0.00%	1,891	33.21%
Census Tract 6749	2,366	43.73%	42	0.78%	19	0.35%	11	0.20%	2,438	45.06%
Census Tract 6750	2,211	68.64%	0	0.00%	0	0.00%	19	0.59%	2,230	69.23%
Census Tract 6751.01	2,459	36.65%	535	7.97%	302	4.50%	296	4.41%	3,592	53.54%
Census Tract 6751.02	2,093	49.05%	26	0.61%	10	0.23%	0	0.00%	2,129	49.89%
Census Tract 6752	2,645	51.58%	7	0.14%	141	2.75%	0	0.00%	2,793	54.47%
Census Tract 6753	1,792	35.00%	22	0.43%	0	0.00%	0	0.00%	1,814	35.43%
Census Tract 6754.01	1,698	21.61%	120	1.53%	180	2.29%	269	3.42%	2,267	28.85%
Census Tract 6754.02	1,285	46.26%	0	0.00%	0	0.00%	0	0.00%	1,285	46.26%
Census Tract 6755.01	2,296	32.73%	65	0.93%	213	3.04%	0	0.00%	2,574	36.69%
Census Tract 6755.02	1,851	10.49%	1,763	9.99%	4,026	22.82%	49	0.28%	7,689	43.59%
Census Tract 6755.03	394	5.35%	430	5.84%	253	3.43%	967	13.13%	2,044	27.75%
Census Tract 6756	2,062	26.52%	233	3.00%	47	0.60%	0	0.00%	2,342	30.13%
Census Tract 6757.01	601	20.37%	21	0.71%	19	0.64%	0	0.00%	641	21.73%
Census Tract 6757.02	798	23.57%	8	0.24%	0	0.00%	0	0.00%	806	23.81%
Census Tract 6758	579	16.60%	23	0.66%	46	1.32%	0	0.00%	648	18.58%

**APPENDIX D - TITLE VI COMPLAINT PROCEDURES AND
COMPLAINT FORM**

FORT BEND TRANSIT

TITLE VI COMPLAINT PROCEDURES

Any person who feels he or she may have been discriminated against is encouraged to report such a violation to the Fort Bend County Public Transportation Department within 180 days of the alleged discrimination. You may file a complaint with the Fort Bend County Public Transportation Department, Attention Civil Rights Officer, 301 Jackson St. Richmond, TX 77469; by telephone (281) 633- RIDE (7433); by fax (832) 471-1843; or by email at transit@fortbendcountytexas.gov. If information is needed in another language, please contact our office at 281-633-RIDE (7433).

Chinese - 鼓勵任何認為自己受到歧視的人在被指控的歧視之日起180天內向本德縣公共交通部門舉報此類違法行為。您可以向本德堡縣公共交通部門投訴，民權官員，德克薩斯州傑克遜街301號，郵政編碼77469；通過電話（281）633-乘車（7433）；傳真（832）471-1843；或通過電子郵件發送至transit@fortbendcountytexas.gov。如果需要其他語言的信息，請致電281-633-RIDE（7433）與我們的辦公室聯繫。

Arabic – يتم تشجيع أي شخص يشعر أنه قد تعرض للتمييز على إبلاغ إدارة النقل العام في مقاطعة فورت بيند بمثل هذا الانتهاك في غضون 180 يوما من التمييز المزعوم. يمكنك تقديم شكوى إلى إدارة النقل العام في مقاطعة فورت بيند ، مسؤول الحقوق المدنية ، 301 جاكسون سانت ريتشموند ، تكساس 77469 ؛ عبر عن طريق الفاكس (832) 471-1843 ؛ أو عن طريق البريد (7433) RIDE -الهاتف (281) 633 إذا كانت هناك حاجة إلى معلومات بلغة أخرى ، transit@fortbendcountytexas.gov الإلكتروني على (7433) RIDE-فيرجي الاتصال بمكتبنا على 281-633.

Vietnamese - Bất kỳ người nào cảm thấy mình có thể bị phân biệt đối xử được khuyến khích báo cáo hành vi vi phạm đó cho Sở Giao thông Công cộng Quận Fort Bend trong vòng 180 ngày kể từ ngày bị cáo buộc phân biệt đối xử. Bạn có thể nộp đơn khiếu nại với Sở Giao thông Công cộng Quận Fort Bend, Cán bộ Quyền công dân Chú ý, 301 Jackson St. Richmond, TX 77469; qua điện thoại (281) 633- RIDE (7433); qua fax (832) 471-1843; hoặc qua email tại transit@fortbendcountytexas.gov . Nếu cần thông tin bằng ngôn ngữ khác, vui lòng liên hệ với văn phòng của chúng tôi theo số 281-633-RIDE (7433).

Gujarati - કોઈ પણ વ્યક્તિ કે જેને લાગે કે તેની સાથે ભેદભાવ કરવામાં આવ્યો હોઈ શકે છે, તેને કથિત ભેદભાવના 180 દિવસની અંદર ફોર્ટ બેન્ડ કાઉન્ટી જાહેર પરિવહન વિભાગને આ પ્રકારના ઉલ્લંઘનની જાણ કરવા માટે પ્રોત્સાહિત કરવામાં આવે છે. તમે ફોર્ટ બેન્ડ કાઉન્ટી પબ્લિક ટ્રાન્સપોર્ટેશન ડિપાર્ટમેન્ટ, એટેન્શન સિવિલ રાઇટ્સ ઓફિસર, 301 જેક્સન સેન્ટ રિચમન્ડ, ટીએક્સ 77469માં ફરિયાદ નોંધાવી શકો છો. ટેલિફોન દ્વારા (281) 633- રાઇડ (7433); ફેક્સ (832) દ્વારા 471-1843; અથવા transit@fortbendcountytexas.gov પર ઇમેઇલ દ્વારા. જો અન્ય કોઈ ભાષામાં માહિતી જોઈતી હોય, તો કૃપા કરીને 281-633-રાઇડ (7433) પર અમારી ઓફિસનો સંપર્ક કરો.

Spanish - Se alienta a cualquier persona que sienta que puede haber sido discriminada a informar dicha violación al Departamento de Transporte Público del Condado de Fort Bend dentro de los 180 días posteriores a la supuesta discriminación. Puede presentar una queja ante el Departamento de Transporte Público del Condado de Fort Bend, Atención al Oficial de Derechos Civiles, 301 Jackson St. Richmond, TX 77469; por teléfono (281) 633- RIDE (7433); por fax (832) 471-1843; o por correo electrónico a transit@fortbendcountytexas.gov . Si necesita información en otro idioma, comuníquese con nuestra oficina al 281-633-RIDE (7433).

Hindi - कोई भी व्यक्ति जो महसूस करता है कि उसके साथ भेदभाव किया गया है या कथित भेदभाव के 180 दिनों के भीतर फोर्ट बेंड काउंटी पब्लिक ट्रांसपोर्ट डिपार्टमेंट को इस तरह के उल्लंघन की रिपोर्ट करने के लिए प्रोत्साहित किया जाता है। आप फोर्ट बेंड काउंटी पब्लिक ट्रांसपोर्ट डिपार्टमेंट, ध्यान नागरिक अधिकार अधिकारी, 301 जैक्सन स्टेट रिचमंड, TX 77469 के साथ शिकायत दर्ज कर सकते हैं; टेलीफोन द्वारा (281) 633- RIDE (7433); फैक्स द्वारा (832) 471-1843; या transit@fortbendcountytexas.gov पर ईमेल द्वारा। यदि किसी अन्य भाषा में जानकारी की आवश्यकता है, तो कृपया हमारे कार्यालय से 281-633-RIDE (7433) पर संपर्क करें।

Malayalam - വിവേചനം നേരിട്ടതായി തോന്നുന്ന ഏതൊരു വ്യക്തിയും അത്തരമൊരു ലംഘനം 180 ദിവസത്തിനുള്ളിൽ ഫോർട്ട് ബെൻഡ് കൗണ്ടി പൊതുമതാഗത വകുപ്പിനെ അറിയിക്കാൻ പ്രോത്സാഹിപ്പിക്കുന്നു. ഫോർട്ട് ബെൻഡ് കൗണ്ടി പബ്ലിക് ട്രാൻസ്പോർട്ട് ഡിപ്പാർട്ട്മെന്റ്, അറ്റൻഷൻ സിവിൽ റൈറ്റ്സ് ഓഫീസർ, 301 ജാക്സൺ സെന്റ് റിച്ചമണ്ട്, ടിഎക്സ് 77469; ടെലിഫോൺ വഴി (281) 633- റൈഡ് (7433); ഫാക്സ് (832) 471-1843; അല്ലെങ്കിൽ transit@fortbendcountytexas.gov ഇമെയിൽ വഴി. മറ്റൊരു ഭാഷയിൽ വിവരങ്ങൾ ആവശ്യമുണ്ടെങ്കിൽ, 281-633-റൈഡ് (7433) എന്ന നമ്പറിൽ ഞങ്ങളുടെ ഓഫീസുമായി ബന്ധപ്പെടുക.

Tagalog - Ang sinumang tao na sa palagay ay maaaring nadiskrimina siya ay hinihikayat na iulat ang naturang paglabag sa Kagawaran ng Pampublikong Transportasyon ng Fort Bend County sa loob ng 180 araw mula sa umano'y diskriminasyon. Maaari kang maghain ng reklamo sa Kagawaran ng Pampublikong Transportasyon ng Fort Bend County, Attention Civil Rights Officer, 301 Jackson St. Richmond, TX 77469; sa pamamagitan ng telepono (281) 633- RIDE (7433); sa pamamagitan ng fax (832) 471-1843; O sa pamamagitan ng email sa transit@fortbendcountytexas.gov. Kung kailangan ng impormasyon sa ibang wika, mangyaring makipag-ugnay sa aming tanggapan sa 281-633-RIDE (7433).

Urdu - حوصلہ کی اس تو ہے گیا کیا سلوک امتیازی ساتھ کے اس کہ ہے کرتا محسوس یہ جو شخص بھی کوئی کو ڈپارٹمنٹ ٹرانسپورٹ پبلک کاؤنٹی بینڈ فورٹ اندر کے دن 180 کے سلوک امتیازی مبینہ وہ کہ ہے جاتی کی افزائی کے حقوق شہری توجہ، ڈپارٹمنٹ ٹرانسپورٹیشن پبلک کاؤنٹی بینڈ فورٹ آپ دے۔ اطلاع کی ورزی خلاف کی طرح اس (281) ذریعے کے فون ٹیلی ہیں۔ سکتے کرا درج شکایت میں 77469 ٹیکساس، رچمنڈ سینٹ جیکسن 301، افسر کے میل ای پر transit@fortbendcountytexas.gov یا 471-1843 (832) فیکس بذریعہ؛ رائیڈ (7433) 633- ذریعہ دفتر ہمارے پر (7433) رائیڈ-281-633 کرم براہ، تو ہو ضرورت کی معلومات میں زبان دوسری کسی اگر۔ ذریعہ کریں رابطہ سے



FORT BEND TRANSIT

TITLE VI COMPLAINT PROCEDURES

The Public Transportation Department recognizes its responsibilities to the Fort Bend County community in which it operates and to the society, it serves. The Public Transportation Department will utilize its best efforts to assure that no person shall be excluded from participation in, be denied the benefits of, or be subjected to discrimination under the Fort Bend County program of transit service delivery and related benefits.

Any person who feels he or she may have been discriminated against is encouraged to report such a violation to the Fort Bend County Public Transportation Department within 180 days of the alleged discrimination. You may file a complaint with the Fort Bend County Public Transportation Department, Attention Civil Rights Officer, 301 Jackson St. Richmond, TX 77469; by telephone (281) 633- RIDE (7433); by fax (832) 471-1843; or by email at transit@fortbendcountytexas.gov. If information is needed in another language, please contact our office at 281-633-RIDE (7433).

The responsibility for carrying out Fort Bend County's commitment to Civil Right responsibilities rests with the Director of Public Transportation.

The Civil Rights Officer will review and investigate every complaint promptly. Reasonable measures will be undertaken to preserve any information that is confidential. At a minimum, the Civil Rights Officer will:

- Identify and review all relevant documents, practices and procedures;
- Identify and interview persons with knowledge of the Title VI violation, i.e., the person making the complaint; witnesses or anyone identified by the Complainant; anyone who may have been subject to similar activity, or anyone with relevant information.

Once the investigation has been completed, the Civil Rights Officer will decide the validity of the complaint and what, if any, remedial actions will be taken to address the complainant's concerns. If an Title VI violation is found to exist, remedial steps as appropriate and necessary will be taken immediately. The Complainant will also receive a final report together with any remedial steps. The investigation process and final report should take no longer than twenty-five (25) business days.

The Civil Rights Officer shall maintain a log of Title VI complaints received from this process which shall include the date the complaint was filed; a summary of the allegations; the status of the complaint; and actions taken by the Fort Bend County Department of Public Transportation in response to the complaint. Should Fort Bend County receive a Title VI complaint in the form of a formal charge or lawsuit, the complaint will be forwarded to the County Attorney.

A person may also file a complaint directly with the Federal Transit Administration (FTA) no later than 180 days after the date of the alleged discrimination:

Federal Transit Administration's Office of Civil Rights
Attention: Title VI Program Coordinator East Building, 5th Floor - TCR
1200 New Jersey Ave., SE Washington, DC 20590
202-366-4018

The above link provide specific information about the FTA complaint process and the appropriate forms for submission directly to FTA.

Fort Bend County Public Transportation Department Title VI Complaint Form

Any person who feels he or she may have been discriminated against is encouraged to report such a violation to the Fort Bend County Public Transportation Department within 180 days of the alleged discrimination. You may file a complaint with the Fort Bend County Public Transportation Department, Attention Civil Rights Officer, 301 Jackson St. Richmond, TX 77469; by telephone (281) 633- RIDE (7433); by fax (832) 471-1843; or by email at transit@fortbendcountytexas.gov. If information is needed in another language, please contact our office at 281-633-RIDE (7433).

Chinese - 鼓勵任何認為自己受到歧視的人在被指控的歧視之日起180天內向本德縣公共交通部門舉報此類違法行為。您可以向本德堡縣公共交通部門投訴，民權官員，德克薩斯州傑克遜街301號，郵政編碼77469；通過電話（281）633-乘車（7433）；傳真（832）471-1843；或通過電子郵件發送至transit@fortbendcountytexas.gov。如果需要其他語言的信息，請致電281-633-RIDE（7433）與我們的辦公室聯繫。

Arabic – يتم تشجيع أي شخص يشعر أنه قد تعرض للتمييز على إبلاغ إدارة النقل العام في مقاطعة فورت بيند بمثل هذا الانتهاك في غضون 180 يوما من التمييز المزعوم. يمكنك تقديم شكوى إلى إدارة النقل العام في مقاطعة فورت بيند ، مسؤول الحقوق المدنية ، 301 جاكسون سانت ريتشموند ، تكساس 77469 ؛ عبر عن طريق الفاكس (832) 471-1843 ؛ أو عن طريق البريد (7433) RIDE -الهاتف (281) 633- إذا كانت هناك حاجة إلى معلومات بلغة أخرى ، transit@fortbendcountytexas.gov الإلكتروني على (7433) RIDE-فيرجى الاتصال بمكتبنا على 281-633.

Vietnamese - Bất kỳ người nào cảm thấy mình có thể bị phân biệt đối xử được khuyến khích báo cáo hành vi vi phạm đó cho Sở Giao thông Công cộng Quận Fort Bend trong vòng 180 ngày kể từ ngày bị cáo buộc phân biệt đối xử. Bạn có thể nộp đơn khiếu nại với Sở Giao thông Công cộng Quận Fort Bend, Cán bộ Quyền công dân Chú ý, 301 Jackson St. Richmond, TX 77469; qua điện thoại (281) 633- RIDE (7433); qua fax (832) 471-1843; hoặc qua email tại transit@fortbendcountytexas.gov . Nếu cần thông tin bằng ngôn ngữ khác, vui lòng liên hệ với văn phòng của chúng tôi theo số 281-633-RIDE (7433).

Gujarati - કોઈ પણ વ્યક્તિ કે જેને લાગે કે તેની સાથે ભેદભાવ કરવામાં આવ્યો હોય શકે છે, તેને કથિત ભેદભાવના 180 દિવસની અંદર ફોર્ટ બેન્ડ કાઉન્ટી જાહેર પરિવહન વિભાગને આ પ્રકારના ઉલ્લંઘનની જાણ કરવા માટે પ્રોત્સાહિત કરવામાં આવે છે. તમે ફોર્ટ બેન્ડ કાઉન્ટી પબ્લિક ટ્રાન્સપોર્ટેશન ડિપાર્ટમેન્ટ, એટેન્શન સિવિલ રાઇટ્સ ઓફિસર, 301 જેક્સન સેન્ટ રિચમન્ડ, ટીએક્સ 77469માં ફરિયાદ નોંધાવી શકો છો. ટેલિફોન દ્વારા (281) 633- રાઇડ (7433); ફેક્સ (832) દ્વારા 471-1843; અથવા transit@fortbendcountytexas.gov પર ઇમેઇલ દ્વારા. જો અન્ય કોઈ ભાષામાં માહિતી જોઈતી હોય, તો કૃપા કરીને 281-633-રાઇડ (7433) પર અમારી ઓફિસનો સંપર્ક કરો.

Spanish - Se alienta a cualquier persona que sienta que puede haber sido discriminada a informar dicha violación al Departamento de Transporte Público del Condado de Fort Bend dentro de los 180 días posteriores a la supuesta discriminación. Puede presentar una queja ante el Departamento de Transporte Público del Condado de Fort Bend, Atención al Oficial de Derechos Civiles, 301 Jackson St. Richmond, TX 77469; por teléfono (281) 633- RIDE (7433); por fax (832) 471-1843; o por correo electrónico a transit@fortbendcountytexas.gov . Si necesita información en otro idioma, comuníquese con nuestra oficina al 281-633-RIDE (7433).

Hindi - कोई भी व्यक्ति जो महसूस करता है कि उसके साथ भेदभाव किया गया है या कथित भेदभाव के 180 दिनों के भीतर फोर्ट बेंड काउंटी पब्लिक ट्रांसपोर्ट डिपार्टमेंट को इस तरह के उल्लंघन की रिपोर्ट करने के लिए प्रोत्साहित किया जाता है। आप फोर्ट बेंड काउंटी पब्लिक ट्रांसपोर्ट डिपार्टमेंट, ध्यान नागरिक अधिकार अधिकारी, 301 जैक्सन स्टेट रिचमंड, TX 77469 के साथ शिकायत दर्ज कर सकते हैं; टेलीफोन द्वारा (281) 633- RIDE (7433); फैक्स द्वारा (832) 471-1843; या transit@fortbendcountytexas.gov पर ईमेल द्वारा। यदि किसी अन्य भाषा में जानकारी की आवश्यकता है, तो कृपया हमारे कार्यालय से 281-633-RIDE (7433) पर संपर्क करें।

Malayalam - വിവേചനം നേരിട്ടതായി തോന്നുന്ന ഏതൊരു വ്യക്തിയും അത്തരമൊരു ലംഘനം 180 ദിവസത്തിനുള്ളിൽ ഫോർട്ട് ബെൻഡ് കൗണ്ടി പൊതുമതാഗത വകുപ്പിനെ അറിയിക്കാൻ പ്രോത്സാഹിപ്പിക്കുന്നു. ഫോർട്ട് ബെൻഡ് കൗണ്ടി പബ്ലിക് ട്രാൻസ്പോർട്ട് ഡിപ്പാർട്ട്മെന്റ്, അറ്റൻഷൻ സിവിൽ റൈറ്റ്സ് ഓഫീസർ, 301 ജാക്സൺ സെന്റ് റിച്ചമണ്ട്, ടിഎക്സ് 77469; ടെലിഫോൺ വഴി (281) 633- റൈഡ് (7433); ഫാക്സ് (832) 471-1843; അല്ലെങ്കിൽ transit@fortbendcountytexas.gov ഇമെയിൽ വഴി. മറ്റൊരു ഭാഷയിൽ വിവരങ്ങൾ ആവശ്യമുണ്ടെങ്കിൽ, 281-633-റൈഡ് (7433) എന്ന നമ്പറിൽ ഞങ്ങളുടെ ഓഫീസുമായി ബന്ധപ്പെടുക.

Tagalog - Ang sinumang tao na sa palagay ay maaaring nadiskrimina siya ay hinihikayat na iulat ang naturang paglabag sa Kagawaran ng Pampublikong Transportasyon ng Fort Bend County sa loob ng 180 araw mula sa umano'y diskriminasyon. Maaari kang maghain ng reklamo sa Kagawaran ng Pampublikong Transportasyon ng Fort Bend County, Attention Civil Rights Officer, 301 Jackson St. Richmond, TX 77469; sa pamamagitan ng telepono (281) 633- RIDE (7433); sa pamamagitan ng fax (832) 471-1843; O sa pamamagitan ng email sa transit@fortbendcountytexas.gov. Kung kailangan ng impormasyon sa ibang wika, mangyaring makipag-ugnay sa aming tanggapan sa 281-633-RIDE (7433).

Urdu - کوئی بھی شخص جو یہ محسوس کرتا ہے کہ اس کے ساتھ امتیازی سلوک کیا گیا ہے تو اس کی حوصلہ افزائی کی جاتی ہے کہ وہ مبینہ امتیازی سلوک کے 180 دن کے اندر فورٹ بینڈ کاؤنٹی پبلک ٹرانسپورٹ ڈیپارٹمنٹ کو اس طرح کی خلاف ورزی کی اطلاع دے۔ آپ فورٹ بینڈ کاؤنٹی پبلک ٹرانسپورٹیشن ڈیپارٹمنٹ، توجہ شہری حقوق کے افسر، 301 جیکسن سینٹ رچمنڈ، ٹیکساس 77469 میں شکایت درج کرا سکتے ہیں۔ ٹیلی فون کے ذریعے (281) 633- پر ای میل کے transit@fortbendcountytexas.gov رائیڈ (7433)؛ بذریعہ فیکس (832) 471-1843 یا 633- ذریعہ۔ اگر کسی دوسری زبان میں معلومات کی ضرورت ہو تو، براہ کرم 281-633-رائیڈ (7433) پر ہمارے دفتر سے رابطہ کریں۔



Fort Bend County Public Transportation Department Title VI Complaint Form

Title VI of the 1964 Civil Rights Act requires that “No person in the United States shall, on the ground of race, color or national origin, be excluded from participation in, be denied the benefits of, or be subjected to discrimination under any program or activity receiving federal financial assistance.” The Fort Bend County Public Transportation Department is committed to a policy of non-discrimination in the conduct of its business, including the responsibility to deliver equitable and accessible public transportation services.

Any person who feels he or she may have been discriminated against is encouraged to report such a violation to the Fort Bend County Public Transportation Department within 180 days of the alleged discrimination.

The following information is necessary to assist us in processing your complaint. Should you require any assistance in completing this form, or if information is needed in another language, please let us know by telephone (281) 633-7433 or by email at Transit@fortbendcountytexas.gov. Complete and return this form to Fort Bend County Public Transportation Department, Attention Civil Rights Officer, 301 Jackson Street, Richmond Texas 77469.

1.Complainant’s Name _____

2.Address_____

3.City, State and Zip Code_____

4.Telephone Number_____ (alternate)_____

5.Email Address_____

6.Person discriminated against (if someone other than the complainant)

Name_____

Address_____

City, State and Zip Code_____

Please explain your relationship to this person _____

7.Which of the following best describes the reason you believe the discrimination tookplace? Was it because of your:

a.Race/Color/Ethnicity_____

b.National Origin _____

c. Low Income _____

d. Limited English _____

8. What date did the alleged discrimination take place. _____

9. In our own words, describe the alleged discrimination. Explain what happened and whom you believe was responsible. Please use the back of this form if additional space is required.

If you need additional space, an additional sheet is attached for that purpose.

10. Have you filed this complaint with any other federal, state, or local agency; or with any federal or state court? _____ Yes _____ No

If yes, check all that apply:

_____ Federal agency _____ Federal court

_____ State agency _____ State court

_____ Local agency

11. Please provide information about a contact person at the agency/court where the complaint was filed if applicable.

Name _____

Address _____

City, State, and Zip Code _____

Telephone Number _____

Please sign below. You may attach any written materials or other information that you think is relevant to your complaint.

Complainant's Signature Date

[illegible]

This Page Intentionally Left Blank

APPENDIX E – LETTER OF NO COMPLAINTS



FORT BEND COUNTY PUBLIC TRANSPORTATION DEPARTMENT

PERRI D'ARMOND
Transit Director

January 30, 2025

U.S. Department of Transportation
Federal Transit Administration
1200 New Jersey Avenue, SE
Washington, DC 20590

RE: Title VI Complaints

Dear Sir/Madam,

The Fort Bend County Public Transportation Department, Fort Bend Transit, did not receive any Title VI complaints or lawsuits during the period from January 1, 2022 to December 31, 2024.

Sincerely,

A handwritten signature in blue ink that reads "Perri D'Armond".

Perri D'Armond
Transit Director
Fort Bend County Public Transportation

This Page Intentionally Left Blank

APPENDIX F – PRESENTATIONS AND OUTREACH

2022					
Date of Presentation/O utreach	Attendance Number	Organization Name	Location	Notes	Employee
11-Jan-22	15	Development Corporation of Richmond	City of Richmond	Brief presentation to the board regarding our Ros/Rich services.	Perri, Sarah, Tennille
12-Jan-22	100+	City of Sugar L&; Reunification Center Exercise Information	City of Sugar L& - Smart Financial Center	Provided bus shuttle & information to the individuals that were part of the exercise	Russell & Eliza
14-Jan-22	100+	City of Sugar L&; Reunification Center Exercise Information	City of Sugar L& - Smart Financial Center	Provided bus shuttle & information to the individuals that were part of the exercise	Russell & Eliza
18-Jan-22	25+	Hope of Fort Bend Clubhouse Board Meeting	Zoom Meeting		Melanie
20-Jan-22	10	FB Connect Steering Committee	12300 Parc Crest - Stafford TX	Participated in Steering Committee Meeting for Monthly Fort Bend CONNECT Meetings.	Melanie
Date of Presentation/O utreach	Attendance Number	Organization Name	Location	Notes	Employee
9-Feb-22	20	Baker Ripley Professional Development Training	ZOOM Presentation	Brief presentation to Baker Ripley staff regarding our services. Answered service questions.	Melanie
11-Feb-22	60	Fort Bend CONNECT Meeting "Financial Stability"	ZOOM Presentation	Raymond Nguyen with Baker Ripley, Roberto with SER Jobs, & Victoria Valdez with United Way THRIVE were the presenters.	Melanie
16-Feb-22	100	LCISD/All High Schools Adult Transition Program	LCISD Adult Transition Campus 710 Houston St Richmond TX 77469	H&ed out promotional items & information to event participants. Answered service questions.	Melanie & Eliza
17-Feb-22	9	FB Connect Steering Committee	ZOOM Presentation	Participated in Steering Committee Meeting for Monthly Fort Bend CONNECT Meetings.	Melanie
Date of Presentation/O utreach	Attendance Number	Organization Name	Location	Notes	Employee
8-Mar-22	150	Houston Community College (HCC)	West Houston Institute 2811 Hayes Rd Houston TX 77082	Small business including DBE expo to notify vendors of FBT's upcoming procurements.	Alisha
8-Mar-22	20	Mamie George/Catholic Charities	Mamie George Center 1111 Collins Rd Richmond TX 77469	H&ed out promotional items & information to the seniors at the center. Answered questions regarding our services.	Melanie & Donna

11-Mar-22	86	Fort Bend CONNECT Meeting "Basic Needs Resources"	ZOOM Presentation	Carrie Rai with FBC Social Services, Victoria Oytiso with Access Health, & Debbie Kinne with East Fort Bend Human Needs Ministry were the speakers	Melanie
23-Mar-22	32	Texas Workforce Solution	TEAMS Meeting	Discussed out transit service, who we service & the positions currently vacant.	Perri
30-Mar-22	9	FB Connect Steering Committee	ZOOM Meeting	Participated in Steering Committee Meeting for Monthly Fort Bend CONNECT Meetings.	Melanie
Date of Presentation/O utreach	Attendance Number	Organization Name	Location	Notes	Employee
8-Apr-22	75	Fort Bend CONNECT Meeting "Freedom From Violence"	ZOOM Presentation	Nicole Franklin-Jones w/AVDA & Vita Goodell w/Fort Bend Women's Center, were the speakers.	Melanie
9-Apr-22	150	FBISD Transition Fair	Reese Career & Tech Campus 12300 University Blvd Sugar L& TX 77479	H&ed out promotional items & information to the fair participants. Answered questions regarding our services.	Melanie & Eliza
14-Apr-22	8	FB Connect Steering Committee	ZOOM Meeting	Participated in Steering Committee Meeting for Monthly Fort Bend CONNECT Meetings.	Melanie
21-Apr-22	30+	Fort Bend EDC Monthly Meeting	1 Fluor Daniel Dr Sugar L& TX 77478	Speaker: Carlos Zepeda Jr, CP, Area Engineer TxDOT Update - Fort Bend County	Don
Date of Presentation/O utreach	Attendance Number	Organization Name	Location	Notes	Employee
20-May-22	1	Encompass Health & Rehab	Encompass Health 1325 SH 6 Sugar L& TX 77478	Took DR brochures & gave a brief description of our service.	Melanie
23-May-22	11	Dulles H S Adult Transition Program	Dulles H S 550 Dulles Avenue Sugar L& TX 77478	Took teachers & students on a travel training field trip from the school to our transit facility. Explained how our service works, answered questions, & took them on a tour..	Melanie
26-May-22	1	Clinic - Rosenberg	San Jose Clinic 1615 Avenue E Rosenberg TX 77471	Took DR brochures & gave a brief description of our service.	Melanie
Date of Presentation/O utreach	Attendance Number	Organization Name	Location	Notes	Employee
8-Jun-22	15	Fort Bend Gardens Apts.	Fort Bend Gardens 313 Lane Dr Rosenberg TX 77471	Presentation to a group of senior residents regarding our services & client responsibilities. H&ed out brochures & answered service questions.	Melanie & Tennille
10-Jun-22	60	Fort Bend CONNECT Meeting "Youth Focused Programming"	United Way - FB 12300 Parc Crest Dr Stafford TX 77477	H&ed out promotional items & information to various social service agencies. Participated in Steering Committee duties.	Melanie

Date of Presentation/Outreach	Attendance Number	Organization Name	Location	Notes	Employee
12-Jul-22	60	Fort Bend CONNECT Meeting "Medicare, Medicaid, Specialty Care"	ZOOM Meeting	Access Health, Fort Bend Indigence Care, & Change Happens shared resources for Healthcare Access.	Melanie
21-Jul-22	40+	Fort Bend EDC Monthly Meeting	1 Fluor Daniel Dr Sugar L& TX 77478	Participated in Steering Committee Meeting for Monthly Fort Bend CONNECT Meetings.	Perri & Tennille
21-Jul-22	9	FB Connect Steering Committee	ZOOM Meeting		Melan
21-Jul-22	50+	TAG Houston Region - Women in Transportation Cocktails & Conversations	Lott Hall 6201 Hermann Park Dr Houston TX		Perri, Sarah, Tennille, Alisha, Pamela
26-Jul-22		BayTran - State of Transit Executive Panel	9100 Gulf Freeway Houston TX 77017		Sarah & Alisha
Date of Presentation/Outreach	Attendance Number	Organization Name	Location	Notes	Employee
11-Aug-22	100	Judge George Resource Fair	St Thomas Orthodox Cathedral 2411 5th St Stafford TX 77477	H&ed out marketing resources to constituents of FBC & answered service questions. Also took tickets for potential sales.	Perri, Tennille, Eliza, Pamela, LaKeisha
12-Aug-22	55	Fort Bend CONNECT Meeting "Legal Aid Services"	United Way - FB 12300 Parc Crest Dr Stafford TX 77477	Tariq Gladney w/Lone Star Legal Aid was the speaker. Participated in Steering Committee duties.	Melanie
16-Aug-22	20+	Boys Children's Hospital Commute	TCH- Pavilion for Women 6651 Main St Houston TX 77030	H&ed out marketing resources to commuters & answered service questions. TCH employees asked about possible Katy P&R to commute into TMC	Eliza
16-Aug-22	25+	Hope of Fort Bend Clubhouse Board Meeting	Zoom Meeting	Answered Service Questions that popped up.	Melanie
18-Aug-22	9	Fort Bend CONNECT Steering Committee Meeting	United Way - FB 12300 Parc Crest Dr Stafford TX 77477	Participated in Steering Committee Meeting for Monthly Fort Bend CONNECT Meetings.	Melanie
Date of Presentation/Outreach	Attendance Number	Organization Name	Location	Notes	Employee
8-Sep-22	120	Baker Ripley Communities in Action Resource Fair	United Way - Fort Bend 12300 Parc Crest Dr Stafford TX 77477	H&ed out marketing resources to participants & answered service questions.	Melanie
13-Sep-22	40+	Central Fort Bend Chamber - Breakfast on the Bend	Boys & Girls Club Richmond TX	Learned more about the Boys & Girls Club as well as networking with other organizations.	Tennille & Sarah

16-Sep-22	100+	ConnectSmart Launch Event	4201 Main St Houston TX	Launching the new ConnectSmart App & Networking with other organizations	Tennille & Pamela
24-Sep-22	250+	Fort Bend County Fair	FBC Fairgrounds 4310 SH 36 Rosenberg TX 77471	Bus was staged for a cooling area as well as for information regarding services.	Perri, Dalia & Oscar
26-Sep-22	25+	H-GAC Commuter Fair	3555 Timmons Ln 2nd Floor Conference Room B & C Houston TX 77027	H&ed out marketing resources to employees & answered service questions.	Eliza
Date of Presentation/O utreach	Attendance Number	Organization Name	Location	Notes	Employee
11-Oct-22	45	American Council of Engineering Companies (ACEC)	WEBEX Virtual Meeting	Presented to the group on services FBT provide & upcoming projects.	Perri & Sarah
12-Oct-22	10	City of Rosenberg	City of Rosenberg	Presented at the EDC Meeting	Perri & Sarah
12-Oct-22	30	Friends of North Richmond	Friends of North Richmond 1305 Clay St Richmond TX 77469		Tennille & Alisha
20-Oct-22	50	Fort Bend EDC Monthly Meeting	1 Fluor Daniel Dr Sugar L& TX 77478	FBISD & LCISD were there to discuss upcoming propositions.	Tennille
21-Oct-22	5	Hope Fort Bend Clubhouse	Hope FB Clubhouse 912 S 6th St Richmond TX 77469	Met staff there & discussed how our transit services can assist their members.	Tennille
Date of Presentation/O utreach	Attendance Number	Organization Name	Location	Notes	Employee
12-Nov-22	20	Fort Bend County Libraries	George Memorial Library 1001 Golfview Dr Richmond TX 77469	Participated in FBCL Book Fair Festival. H&ed out marketing material resources & answered service questions.	Tennille & Eliza
Date of Presentation/O utreach	Attendance Number	Organization Name	Location	Notes	Employee
12.12.22	20+	Transition Services Strategic Business & Community Collaborative Meeting	12300 University Blvd Sugar L& TX 77459		Tennille & Toki

2023					
Date of Presentation/Outreach	Attendance Number	Organization Name	Location	Notes	Employee
11-Jan-23	50+	Central Fort Bend Chamber Leadership	Various Places - Judicial Session	Spoke to the group about our services as we toured some of the Judicial areas within the county.	Tennille
17-Jan-23	12	Hope Fort Bend Clubhouse Board Meeting	Zoom		Tennille & Toki
17-Jan-23	40+	FB Connect Meeting	United Way - FB 12300 Parc Crest Dr Stafford TX 77477		Tennille
Date of Presentation/Outreach	Attendance Number	Organization Name	Location	Notes	Employee
6-Feb-23	10+	HFB Clubhouse	912 6th St Richmond 77469	Available for transit discussion &/or issues.	Toki
7-Feb-23	3	Christ Clinic	25722 Kingsl& Blvd Unit 111 Katy 77494	Discussed our services & how we can work with Christ Clinic & their clients.	Tennille & Sarah
16-Feb-23	50+	Fort Bend EDC Meeting	Fluor Daniel	Monthly Meeting	Tennille
21-Feb-23	10	Hope Fort Bend Clubhouse Board Meeting	Zoom Meeting	Monthly Meeting	Toki
23-Feb-23	10+	Central Fort Bend Chamber Leadership	Unwined		Tennille
Date of Presentation/Outreach	Attendance Number	Organization Name	Location	Notes	Employee
2-Mar-23	20	Four Corners Senior Center	15700 Old Richmond Rd Sugar L& TX 77498	Chat with FB Seniors of any issues they may have had.	Toki
2-Mar-23	50+	FBC Resource Fair	1001 Collins Rd Richmond 77469	Open to the public - had a booth for all questions related to transit services.	Toki, Eliza, Perri & Sarah
8-Mar-23	20	Lamar Senior Center	100 Louisiana St Missouri City 77489	Chat with FB Seniors of any issues they may have had.	Toki
10-Mar-23	90+	Fort Bend Connect Meeting	United Way - FB 12300 Parc Crest Dr Stafford TX 77477	Easterseals Greater Houston presentation & FBCIL presentation	Tennille
21-Mar-23	12	Transition Services Advisory Quarterly Mtg	Suites Sugar L& SE - Missouri City 5007 Hwy 6 Missouri City 77459		Tennille & Toki
21-Mar-23	10	HFB Clubhouse	Zoom Meeting	Monthly Meeting	Tennille & Toki
Date of Presentation/Outreach	Attendance Number	Organization Name	Location	Notes	Employee

6-Apr-23	2	Methodist Hospital	Medical Center	Discuss Token Transit	Pamela & Maria
18-Apr-23	10	Hope Fort Bend Clubhouse Board Meeting	Zoom Meeting	Monthly Meeting	Toki
19-Apr-23	40+	100 Days of Moving Forward with the Co Judge	Fort Bend Museum Richmond	Opportunity to discuss FBT & our upcoming projects	Perri & Tennille
20-Apr-23	12	FB Women's Center	2010 Preston St Richmond 77469	Discuss transportation services w/staff	Toki
20-Apr-23	2	St Luke's Hospital	Medical Center	Discuss Token Transit	Pamela & Maria
26-Apr-23	2	FB Dental	3717 Township Ln Missouri City 77456	Discuss transportation services w/staff	Toki
27-Apr-23	30+	Lamar CISD Adult Transition Program	Long Acres Ranch 2335 Richmond Pkwy Richmond 77469	Lamar CISD Transition Fair	Toki & Tennille
29-Apr-23	75+	FBISD - SPED	James Reese Career & Tech Cntr 12300 University Blvd Sugar L & 77479	Annual Transition Resource Fair	Toki & Eliza
Date of Presentation/Outreach	Attendance Number	Organization Name	Location	Notes	Employee
3-May-23	30+	Fort Bend PIO	FBC Emergency Operations Center	Discuss communication tactics with other neighboring organizations	Tennille
12-May-23	40+	FB Connect Meeting	United Way - FB 12300 Parc Crest Dr Stafford TX 77477	Monthly Meeting	Tennille
16-May-23	10	HFB Clubhouse	Zoom Meeting	Monthly Meeting	Tennille & Toki
18-May-23	50+	Fort Bend EDC Meeting	Fluor Daniel	Monthly Meeting	Tennille
Date of Presentation/Outreach	Attendance Number	Organization Name	Location	Notes	Employee
9-Jun-23	40+	FB Connect Meeting	United Way - FB 12300 Parc Crest Dr Stafford TX 77477	Monthly Meeting	Toki & Tennille
14-Jun-23	1	Fresenius Kidney Care - ROS	2510 B F Terry Blvd Rosenberg TX 77471	discuss services w/Social Worker deliver brochures	Toki
20-Jun-23	10	HFB Clubhouse	Zoom Meeting	Monthly Board Meeting	Toki
21-Jun-23	15	FBT Vision Plan Advisory Committee	3737 Bamore Road	Meeting to discuss visions of FBT - short & long range planning	all management staff & committee
26-Jun-23	2	Energy Corridor Management District	777 N Eldridge Parkway Houston	Discuss westpark planning - public meeting event	Sarah & Tennille

Date of Presentation/Outreach	Attendance Number	Organization Name	Location	Notes	Employee
10-Jul-23	3	FBC Engineering Tour	FBT Facility	Discussed our services & provided a tour of our facility	Sarah
13-Jul-23	8	FBCIL Fort Bend Center for Independent Living	12946 Dairy Asford Ste 110 Sugar L& TX 77478	Presentation on Transit services w/staff	Toki
14-Jul-23	40+	FB Connect Meeting	United Way - FB 12300 Parc Crest Dr Stafford TX 77477	Monthly Meeting	Toki
18-Jul-23	10	HFB Clubhouse	Zoom	Monthly Board Meeting	Toki
19-Jul-23	10	Exchange Club of Fort Bend	Sugar Creek Country Club 420 Sugar Creek Blvd Sugar L& TX 77478	Presentation on Transit services	Toki
Date of Presentation/Outreach	Attendance Number	Organization Name	Location	Notes	Employee
5-Aug-23	100's	AccessHealth 2023 Back-to-School Health Fair	MC Clinic - 307 Texas Pkwy Missouri City TX 77489	Open to the public - had a table for all questions related to transit services	Toki & Eliza
8-Aug-23	6	Energy Corridor Management District	757 N Eldridge Pkwy Houston TX 77079	Discuss Westpark planning - public meeting event	Perri, Sarah, Tennille Pamela, Alisha, Toki, Eliza
11-Aug-23	40+	FB Connect Meeting	United Way - FB 12300 Parc Crest Dr Stafford TX 77477	Monthly Meeting	Toki & Tennille
12-Aug-23	100+	AccessHealth 2023 Back-to-School Health Fair	RIC Clinic - 400 Austin St Richmond TX 77469	Open to the public - had a table for all questions related to transit services	Toki & Eliza
22-Aug-23	8	Westpark Park & Ride Public Meeting	FBC Cinco Ranch Library 2620 Commercial Center Blvd Katy TX 77494	Discuss Westpark planning - public meeting event	Sarah, Tennille Pamela, Alisha, Toki, Eliza
26-Aug-23	100+	FBC Epicenter	FBC Epicenter 28505 SW Fwy Rosenberg TX 77471	Open to the public - had a table for all questions related to transit services	Toki & Eliza
30-Aug-23	50	HCC VAST Academy	HCC - Scarcella Bldg 10141 Cash Rd Stafford TX 77477	Presentation on Transit services	Toki, Eliza, Oscar, Tennille
Date of Presentation/Outreach	Attendance Number	Organization Name	Location	Notes	Employee
8-Sep-23	40+	FB Connect Meeting	United Way - FB 12300 Parc Crest Dr Stafford TX 77477	Monthly Meeting	Toki
19-Sep-23	10	HFB Clubhouse	Zoom	Monthly Board Meeting	Toki
19-Sep-23	2	FBC HR Visit	FBT Facility	Discuss Transit services & Tour of the Transit Facility.	Perri
21-Sep-23	40+	EDC Monthly Meeting	Fluor Daniel	Monthly Board Meeting	Tennille

21-Sep-23	2	TxDOT Visit /Tour	FBT Facility	Discuss Ambassador Services / Interview & Tour	Tennille
23-Sep-23	40	The ARC of Fort Bend	Clements HS 4200 Elkins Rd Sugar L& TX 77479	2023 Fall Disability Resource Fair	Toki
27-Sep-23	20	Stafford HS	1625 Staffordshore Rd Stafford TX 77477	Discuss Transit services w/ Life Skills/Transition Program staff & students	Toki
Date of Presentation/Outreach	Attendance Number	Organization Name	Location	Notes	Employee
11-Oct-23	25	Fulshear/Jones Creek Senior Center	7714 FM 359 Richmond TX 77406	met w/FB Seniors of any issues they may have had.	Toki
13-Oct-23	40+	FB Connect Meeting	United Way - FB 12300 Parc Crest Dr Stafford TX 77477	monthly meeting	Toki
14-Oct-23	60+	Shady Oak Primary School	600 Main St Richmond TX 77469	Touch A Truck Event	Toki, Eliza, Oscar
31-Oct-23	200+	TX Children's Hospital	6651 Main St Houston TX 77030	Benefits Fair	Toki
Date of Presentation/Outreach	Attendance Number	Organization Name	Location	Notes	Employee
2-Nov-23	100	LCISD/Fulshear HS	9302 Charger Way Fulshear TX 77441	Adult Transition Program Transition Fair	Toki
3-Nov-23	200+	FBISD	12300 University Blvd Sugar L& TX 77459	SBEP Quarterly Workshop	Toki & Tennille
8-Nov-23	15	Texana - ROS	4910 Airport Ave Bldg A Rosenberg TX 77471	met w/staff to discussed transit services	Toki
9-Nov-23	10	The Arc of Fort Bend	Zoom Virtual Event	Parent education & support group	Toki
17-Nov-23	80	FB Connect Meeting	United Way - FB 12300 Parc Crest Dr Stafford TX 77477	2023 Gratitude Party	Toki
Date of Presentation/Outreach	Attendance Number	Organization Name	Location	Notes	Employee
8-Dec-23	8	Texana - SGL	2535 Cordes St Sugar Land TX 77479	met w/staff to discussed transit services	Toki
12-Dec-23	20	Hope FBClubhouse & NAMI	912 S 6th St Richmond TX 77469	Education & Employment Dinner Monthly Board Meeting	Toki

2024

Date of Presentation/Outreach	Attendance Number	Organization Name	Location
12-Jan-24	60≈	FB Connect Meeting	United Way - FB 12300 Parc Crest Dr Stafford TX 77477
13-Jan-24	100	AccessHealth 2024 Back-to-School Winter Bash	RIC Clinic - 400 Austin St Richmond TX 77469
16-Jan-24	10	HFB Clubhouse	Zoom
Date of Presentation/Outreach	Attendance Number	Organization Name	Location
9-Feb-24	60≈	FB Connect Meeting	United Way - FB 12300 Parc Crest Dr Stafford TX 77477
20-Feb-24	10	HFB Clubhouse	Zoom
Date of Presentation/Outreach	Attendance Number	Organization Name	Location
4-Mar-24	10	Transit	Launch of Downtown Commuter Service /AMC P&R
8-Mar-24	6	Monty Ballard YMCA @ Cinco Ranch	22807 Westheimer Pkwy Katy TX 77494
Date of Presentation/Outreach	Attendance Number	Organization Name	Location
22-Apr-24	150+	TX Children's Hospital	6621 Fannin St Houston TX 77030
25-Apr-24	50≈	H-GAC CommuteSmart Event	3555 Timmons Ln Houston TX 77027

25-Apr-24	40~	Lamar CISD Adult Transition Program	Long Acres Ranch 2335 Richmond Pkwy Richmond TX 77469
27-Apr-24	400~	FBISD Transition Fair	Reese Career & Technical Ctr 12300 University Blvd Sugar and TX 77479
30-Apr-24	30~	H-GAC CommuteSmart Event	3555 Timmons Ln Houston TX 77027
Date of Presentation/Outreach	Attendance Number	Organization Name	Location
1-May-24	25+	FBC PIO Network Meeting	FBC HS&EM Building
8-May-24	20~	H-GAC CommuteSmart Event	3555 Timmons Ln Houston TX 77027
10-May-24	60~	FB Connect Meeting	United Way - FB 12300 Parc Crest Dr Stafford TX 77477
14-May-24	8	Adult Transition Business & Community Advisory Committee	Dulles HS 550 Dulles Ave Sugar Land TX 77478
16-May-24	4	Fort Bend Women's Center	FB Women's Center 2010 Preston St Richmond TX 77469
21-May-24	5	FB Hope Clubhouse Board Meeting	Zoom
Date of Presentation/Outreach	Attendance Number	Organization Name	Location
5-Jun-24	1000~	FB County Employee Appreciation Fair	FBC Fairgrounds
12-Jun-24		Needville City Council Presentation	
14-Jun-24	60~	FB Connect Meeting	United Way - FB 12300 Parc Crest Dr Stafford TX 77477

18-Jun-24	5	FB Hope Clubhouse Board Meeting	Zoom
26-Jun-24	7	Needville Public Meeting	St Michael's Catholic Church Family Life Center
Date of Presentation/Outreach	Attendance Number	Organization Name	Location
16-Jul-24	7	FB Hope Clubhouse Board Meeting	Zoom
30-Jul-24		FB Transit - Needville Expansion	Needville
Date of Presentation/Outreach	Attendance Number	Organization Name	Location
2-Aug-24		FB Transit - Needville Expansion	Needville
3-Aug-24	600≈	AccessHealth 2024 Back-to-School Health Fair	MC Clinic - 307 Texas Pkwy Missouri City TX 77489
9-Aug-24	60≈	FB Connect Meeting	United Way - FB 12300 Parc Crest Dr Stafford TX 77477
27-Aug-24	100≈	Kinder Morgan Transportation Fair	1001 Louisiana St Houston TX 77002
Date of Presentation/Outreach	Attendance Number	Organization Name	Location
13-Sep-24	60≈	FB Connect Meeting	United Way - FB 12300 Parc Crest Dr Stafford TX 77477
17-Sep-24	50≈	Commute Solutions Event Texas Tower	Texas Tower 845 Texas Ave Houston 77002
24-Sep-24	50≈	Energy Transfer Event	1300 Main St Houston 77002

Date of Presentation/Outreach	Attendance Number	Organization Name	Location
11-Oct-24	60~	FB Connect Meeting	United Way - FB 12300 Parc Crest Dr Stafford TX 77477
15-Oct-24	7	FB Hope Clubhouse Board Meeting	Zoom
18-Oct-24	5	Literacy Council of Fort Bend	12530 Emily Ct Sugar Land 77478
19-Oct-24	75~	Shady Oak Primary School PTA	600 Main ST Richmond 77469
23-Oct-24	100~	TSTC	26706 SW FWY Rosenberg TX 77471
26-Oct-24	75	The ARC of Fort Bend	Clements HS 4200 Elkins Rd Sugar Land TX 77479
29-Oct-24	100~	TX Children's Hospital	6651 Main St Houston TX 77030
Date of Presentation/Outreach	Attendance Number	Organization Name	Location
8-Nov-24	60~	FB Connect Meeting	United Way - FB 12300 Parc Crest Dr Stafford TX 77477
19-Nov-24	7	FB Hope Clubhouse Board Meeting	Zoom
20-Nov-24		FB Transit	
Date of Presentation/Outreach	Attendance Number	Organization Name	Location
4-Dec-24		FB Transit	3301 Town Center Blvd Sugar Land 77479

13-Dec-24	2	FB Transit	Star Cinema Grill 2215 FM 1093 Richmond 77407
18-Dec-24		FB Transit	3301 Town Center Blvd Sugar Land 77479

APPENDIX G – ADVISORY COMMITTEE MEMBERSHIP

Fort Bend County Public Transportation

Advisory Committee

Purpose

The purpose of the Fort Bend County Transit Advisory Committee is to challenge the Department to be more sensitive to the consumers and become more aware of service improvements the department may want to consider by committee members viewpoints of minority, low-income, and Limited English Proficiency (LEP) populations as well as older adults and persons with limited mobility.

The Advisory Committee reviews and provides recommendations to the Transit Department regarding policies, procedures and future planning. Fort Bend County values and respects inclusivity and is committed to ensuring that members of the Advisory Committee represent individuals of different backgrounds, ethnicities, and geographic locations that make up the Fort Bend County Transit Area.

Organization and Membership

Representatives are selected from each of the four County precincts to ensure County-wide representation. Members are also selected from each of the following consumer groups: senior citizens, low income individuals, members representing different LEP populations, and persons with limited mobility. The committee will consist of 10 members. Each member will serve a 3-year term with an option to continue to serve for the following terms. Once a seat becomes vacant, Fort Bend Transit will accept applications and/or nominations to serve on the Advisory Committee. Notices indicating vacant committee seats will be advertised on the department website and transit buses. Requests for nominees will also be sent to agencies and stakeholders in the community such as elected officials, state legislators, environmental organizations, resident groups, civic organizations, faith-based organizations and local small businesses owners and community leaders.

Advisory Committee Responsibilities

1. Understand Fort Bend Transit's mission, structure, programs, strengths, and challenges.
2. Be an active contributing participant in the following:
 - a. Provide recommendations regarding suspensions/warnings;
 - b. Attend suspension hearings;
 - c. A thorough review of materials and other information pertinent to issues; careful consideration of options for addressing these issues; and participation in the discussion of these issues;
3. Assist with strategic planning to address future needs.
4. Maintain confidentiality when appropriate.

5. Enhance the Fort Bend County Public Transportation Department's services through advocacy.

Fort Bend County Public Transportation Advisory Committee

<u>Area Represented</u>	<u>Name</u>	<u>Ethnicity/Gender</u>
Fort Bend County Public Transportation	Anthony Villa-Real	Philipino/Male
County Judge	Shaneka Smith	African-American/Female
Commissioner Precinct 1	Kaitlin Ballint	Anglo-American/Female
Commissioner Precinct 2	Ryan Dunsmore	Anglo-American/Male
Commissioner Precinct 3	Dennis Spellman	Anglo-American/Male
Commissioner Precinct 4	Loren Haskins	Hispanic / Male
Disabled Community Representative	Laura Lavigne	Anglo-American/Female
General Public Community Representative	LaKendria Ross	African-American/Female
Older Adults Community Representative	Don Smithers	Anglo-American/Male
Public at Large Community Representative	Tom Suter	Anglo-American/Male

APPENDIX H – FORT BEND COUNTY PUBLIC TRANSPORTATION SUBRECIPIENTS

TITLE VI AND SUBRECIPIENTS

Fort Bend County Public Transportation does not have any subrecipients at this time.

Subrecipients will adopt the Fort Bend County's Title VI Program, including the notice to beneficiaries, complaint procedures and complaint forms, public participation plan and the language assistance plan if it is required according to their operations.

Subrecipients will be required to submit the attached Statement of Certification along with approval of minutes from their governing body that the entity has adopted the Fort Bend County Title VI Program and Procedures every year by January 30.

Annually, by January 30, any subrecipients will be required to submit on their letterhead, a list of board members and committee members for the upcoming year. If board/committee positions are transit-related non-elected positions, then a breakdown of race membership is required along with a description of the process the entity used to encourage participation. Additionally, subrecipients will be required to list complaints, investigations or any lawsuits for the previous year on the same scheduled date.

Fort Bend County's Civil Rights Officer will provide blank copies of complaint forms and logs to be used by subrecipients should they have any complaints to report to the Civil Rights Officer throughout the year, who will also be available to assist.

Annually, by January 30 subrecipient is also required to submit to Fort Bend County's Civil Rights Officer a Title VI Notice to the Public, including a list of locations where the notice is posted.

Schedule of Sub recipient Title VI Program Submissions

January 30, 2026-Subrecipients adoption of the FBC Title VI Program along with entities attachments are stored electronically by FBC Civil Rights Officer.

January 30, 2027-Subrecipients adoption of the FBC Title VI Program along with entities attachments are stored electronically by FBC Civil Rights Officer.

January 30, 2028-Subrecipients adoption of the FBC Title VI Program along with entities attachments are stored electronically by FBC Civil Rights Officer.

This Page Intentionally Left Blank

APPENDIX I –PUBLIC PARTICIPATION PROGRAM

Fort Bend County Public Transportation Department

Public Participation Plan *A Citizen's Guide for Public Involvement In the Transportation Planning Process*



APPROVED BY FORT BEND COUNTY COMMISSIONERS COURT

August 27, 2024

TABLE OF CONTENTS

INTRODUCTION	1
PURPOSE	1
CONTACT INFORMATION	2
PUBLIC PARTICIPATION REQUIREMENTS.....	3
Major Service and Fare Changes	3
Federal, State, County, and Local Funding.....	3
Capital Purchases and Improvements	4
Disadvantaged Business Enterprise (DBE).....	5
Emergency, Temporary, and/or Administrative Actions	5
Public Participation Plan.....	6
PUBLIC PARTICIPATION METHODS	6
Public Notice	6
Public Meetings	7
Public Hearings.....	7
Participation in Public Participation Programs of other Agencies	7
Other	7
TRANSLATION AND SPECIAL ACCOMMODATION SERVICES	8
CUSTOMER SERVICE	8

INTRODUCTION

The Fort Bend County Public Transportation Department (FBCPT) was formed in June 2005 and is governed by the Fort Bend County Commissioners Court. In 2021, FBCPT rebranded itself to Fort Bend Transit (FBT). FBT offers general public commuter and demand response service to the citizens of Fort Bend County. FBT understands that providing ample opportunities for the public to participate in decision making is essential to delivering transportation solutions that meet the needs of the citizens of Fort Bend County.

Fort Bend Transit is committed to providing an open and visible decision-making process and ensuring equal access for its citizens. FBT shall actively solicit the involvement of citizens in the public decision-making process, through public notification, media exposure, community outreach, community presentations, public meetings, and public hearings.

This document describes outreach strategies and procedures to ensure a proactive community outreach program. FBT staff will apply the principles and guidance set out in this document to guide its efforts to create public involvement opportunities to ensure thorough public participation in the decision-making process using the regulations and guidance provided in Federal and State law.

PURPOSE

The Public Participation Plan (PPP) is a guide for FBT's ongoing public participation activities. The purpose of this PPP is to provide guidance when seeking public input related to projects and service changes and to identify techniques and methodologies for soliciting and considering public input.

The PPP aims to offer early and continuous opportunities for the public to be involved in the decision-making process and to consider the identification of social, economic, and environmental impacts of proposed transportation decisions. It is intended as a guide on how FBT will sustain its efforts to engage community members throughout the service area. As established with our Title VI policy, this includes seeking out and considering the viewpoints of minority, low-income, and Limited English Proficiency (LEP) populations as well as older adults and persons with limited mobility in the course of conducting outreach activities.

The PPP is intended to evolve to meet the changing needs of the community. FBT may periodically review and revise these methods to incorporate new and innovative ways to involve the public in transportation decision-making processes.

CONTACT INFORMATION

Fort Bend Transit's office is located in Rosenberg, Texas.

Deliveries and/or correspondence are received at:

Mailing Address:
Fort Bend County
Public Transportation Department
301 Jackson Street
Richmond, Texas 77469

Physical Address:
3737 Bamore Road
Rosenberg, Texas 77471

The following telephone numbers can be used to contact Departmental staff, schedule a ride, obtain information about services, and/or provide comments concerning services:

Toll Free: 866-751-TRIP (8747)
Office Number: 281-633-RIDE (7433)
Fax Number: 832-471-1843

Comments, questions, or concerns should be directed to the following address:
Transit@fortbendcountytexas.gov.

Information regarding our services is available on the Fort Bend County website at www.FBCTransit.org.

GOALS AND OBJECTIVES

FBT is committed to a thorough and robust public participation process which employs best practices and complies with Federal and State law, regulations, and guidance on public participation. All comments and concerns will be considered.

The goals of the plan are to:

1. Offer a variety of opportunities for the general public to engage in transit planning and decision-making activities.
2. Maintain traditional public notice practices established by State and Local statutes.
3. Consider public input received from regional processes carried out by other entities.

The objectives of the plan are to:

1. Provide general notification of meetings and forums for public input in a manner that is understandable to all populations including but not limited to low-income, minority, or LEP populations.

2. Include meeting materials in a manner that is understandable to all populations including but not limited to low-income, minority, or LEP populations.
3. Utilize a variety of communication methods to capture public input from populations which are not likely to attend or engage in public meetings.
4. Utilize a variety of communication methods to provide notice to the public, including new, innovative, or non-traditional means of notification.
5. Schedule meetings at times and locations that are convenient accessible, and welcoming to all area citizens, including but not limited to low-income, minority, or LEP communities.
6. Hold meetings in locations near planned projects to ensure those most likely to be impacted have opportunities for input.

PUBLIC PARTICIPATION REQUIREMENTS

Major Service and Fare Changes

Fort Bend Transit defines a major service change as a 25 percent reduction or increase of service hours of routes currently in operation and funded by the Federal Transit Administration. A fare change occurs if the amount of fares increases or decreases.

At a minimum, FBT will advertise a notice of public comment in the newspaper of record for Fort Bend County. An opportunity to submit comments on proposed fare increases or major service changes will be provided with a comment period of at least 30 calendar days from the date the advertisement is published. The notice will include a description of the proposed changes, information on how to submit comments along with the office contact information.

A public meeting is not mandatory; however, an opportunity for a public meeting in order to solicit comment will be provided upon written request. The written request must be received within the 30 calendar day comment period. If a public meeting is requested, a notice of public meeting will be posted in the newspaper of record for Fort Bend County at least one week prior to the meeting. The notice will include the time, date, and location of the public meeting.

Comments received will be compiled and considered prior to finalizing recommendations and final changes will be made available to the public. If changes to the proposed schedule are made based on the results of the public comment, the changes will be drafted and announced by public notice. If no changes are made as a result of the public comment and/or public meeting, the proposed changes will be considered final.

Federal, State, County, and Local Funding

Prior to 2014, recipients were able to rely on the TIP development process and public outreach of the Metropolitan Planning Organization (MPO) to satisfy the individual and/or joint responsibilities for public participation. This related to the development of program of projects under Section 5307 and other formula programs which have the same statutory grant requirements (5310, 5339, etc.). The requirements have since changed, as stated in FTA Circular 9030.1E, and as a recipient of federal funds, FBT is required to request public comment on the funding allocated.

At a minimum, FBT will advertise a notice of public comment in the newspaper of record for Fort Bend County. An opportunity to submit comments on Federal and State funding will be provided with a comment period of at least 14 calendar days from the date the advertisement is published. The notice will include a description of the project(s), project cost, Federal, State or Local share, information on how to submit comments along with the office contact information.

A public hearing is not mandatory; however, an opportunity for a public hearing in order to solicit comment will be provided upon written request. The written request must be received within the 14 calendar day comment period. If a public hearing is requested, a notice of public hearing will be posted in the newspaper of record for Fort Bend County at least one week prior to the meeting. The notice will include the time, date, and location of the public meeting.

As a sub-recipient of federal funding from Houston METRO, FBT projects are included during METRO's public input process. FBT also places all funding acceptance or budgetary amendments on Fort Bend County Commissioner's Court for action by the Court. Commissioner's Court meeting notices and agendas are advertised in the County's newspaper of record and on the county website. Each Commissioner's Court meeting provides an opportunity for public comment.

Fort Bend Transit participates in the County's annual process for approving departmental budgets. FBT's budget includes revenues from Federal, State, and Local funding sources which are listed in the County Budget document. A budget hearing is provided for the purposes of receiving comments. The time, date, and location of the hearing will be published in the county newspaper of record.

Comments received will be compiled and considered prior to finalizing funds and/or budgets. Final changes will be made available to the public. If no changes are made as a result of the public comment and/or public hearing, the proposed funds and/or budgets will be considered final.

Capital Purchases and Improvements

Capital purchases such as buses, furniture, and equipment are included in the Federal, State, County, and Local funding budgets. Comments regarding these purchases will be received as part of the public comment for Federal, State, County, and Local funding.

New Capital Improvements such as facilities, terminals, park and ride sites, and maintenance and administration buildings are also included in the Federal, State, and County, and Local funding budgets. Comments regarding these purchases will be received as part of the public comment for Federal, State, County, and Local funding. In addition, at least one Public Meeting will be held for the purposes of receiving public comments on proposed capital improvements.

Disadvantaged Business Enterprise (DBE)

Fort Bend Transit has established a Disadvantaged Business Enterprise (DBE) program in accordance with regulations of the U.S. Department of Transportation (DOT), 49 CFR Part 26. The County has received Federal financial assistance from the Department of Transportation, and as a condition of receiving this assistance, the County has signed an assurance that it will comply with 49 CFR Part 26. In complying with 49 CFR Part 26, FBT must establish an overall three-year goal and provide for public participation.

FBT will consult with minorities, women's and general contractor groups, community organizations, and other officials or organizations in an effort to gather information concerning DBE's. This information would include the availability of disadvantaged and non-disadvantaged businesses, the effects of discrimination on opportunities for DBEs, and a grantee's efforts to establish a level playing field for the participation of DBEs.

FBT will, at a minimum, advertise a notice of public comment announcing the proposed overall three-year goal in the newspaper of record for Fort Bend County. The County may also utilize general circulation media and available minority-focus media and trade publications, and websites. The public notice shall include the proposed goal and its rationale. An opportunity to submit comments will be provided with a comment period of at least 30 calendar days from the date the advertisement is published. The notice will include a brief description of the goal and rationale, how to submit comments, along with office contact information. The goal and the rationale will also be made available for inspection during normal business hours at the FBT offices for a period of at least 30 calendar days following the date of the notice.

Once FBT has completed the public participation process the goal and its rationale are submitted to the Federal Transit Administration (FTA) for final approval. FBT will begin using the overall goal on October 1st of each year, unless FTA has issued other instructions. If FBT establishes a project goal, it will begin using this goal by the time of the first solicitation for a FTA-assisted project contract. FBT will post the goal and its rationale on its website where it will remain throughout the three (3) year term.

Emergency, Temporary, and/or Administrative Actions

Fort Bend Transit will provide public notice of changes by advertising on the county website and placing notices in buses for service changes due to emergency conditions, road or other construction concerns, and/or other temporary situations, when possible. Other strategies such as email or direct mail to stakeholders might also be utilized.

FBT participates in the County's development of Emergency Operations and Evacuation Planning overseen by Fort Bend County's Office of Emergency Management (OEM). The OEM follows Federal, State, and Local guidelines for this process. In emergency situations, public notice falls under the responsibility of local governments. The public should monitor television, radio, and other primary media outlets for direction.

Public Participation Plan

At a minimum, FBT will advertise a notice of public comment in the newspaper of record for Fort Bend County for initial adoption of the Public Participation Plan (PPP). An opportunity to submit comments on will be provided with a comment period of at least 45 calendar days from the date the advertisement is published. The notice will include a description of the information on how to submit comments along with the office contact information. Comments received will be compiled and considered prior to finalizing the plan. Final changes will be made available to the public. If no changes are made as a result of the public comment, the proposed plan will be considered final. Once the PPP is adopted, any changes shall also include a 45 calendar day comment period.

FBT also refers to the Transportation Advisory Committee, consisting of community stakeholders, to garner input on operational policies affecting passenger services. Policies are developed with the input of the committee but not formalized or implemented until public comment is received. Input from the committee is sought for the initial creation of policies and/or procedures as well as changes to policies such as the Passenger Guidelines and other policy documents or concerns in which the direct provision of transportation service is affected.

PUBLIC PARTICIPATION METHODS

Public Notice

At a minimum, a notice of public comment will be placed in the official newspaper of record for Fort Bend County. FBT may also choose to use one or more of the following methods:

1. Advertise notices on county website.
2. Distribute electronic and/or physical copies of notices for public input.
3. Advertise on FBT's social media platforms.
4. Advertise notices on buses and/or at regular bus stops.
5. Advertise notices to appropriate local Hispanic, African-American, and Asian publication, and local newspapers advertising public meetings and requests for comments.
6. Advertise notices on websites of other public or private agencies.
7. Advertise notices on signs or billboards (electronic and traditional messaging signs, boards or other displays).
8. Place notices in public areas, community agency locations, on area bulletin boards, or in area private and public buildings as allowed.
9. Advertise notices on the radio, television, magazine or other advertising media outlets.
10. Email notices to agencies and stakeholders in the community such as elected officials, state legislators, environmental organizations, resident groups, civic organizations, and businesses with interest in a project or who represent the public population of riders.
11. Broadcast public service announcements.

Public Meetings

Public Meetings are an informal public input process open to the public and informational in content. Public meetings are generally held near planned facility locations, at activity or community centers, or during other community events.

Attendees will have the opportunity to provide comment directly to the conducting body, leave written comments, or are directed to a website designed to gather comments. Detailed information, graphics, story boards, and/or presentations are used to provide background information on the item being proposed.

Public Hearings

Public hearings are a formal public input process open to the public. These hearings are recorded live and transcripts or minutes are made available to the public in a timely fashion. Public Hearings are generally held near planned facility locations, at activity or community centers, or during other community events.

Attendees will have the opportunity to provide comments or submit them in writing during the public hearing. Commenters are generally limited to a 3-minute presentation and no feedback is allowed from the conducting body during the public hearing process.

At the beginning of each regularly scheduled Fort Bend County Commissioner's Court, an opportunity for public input is provided on any and all agenda items. FBT accepts all comments received on Departmental actions undertaken by the Commissioner's Court as part of its regularly scheduled meeting agenda.

Participation in Public Participation Programs of other Agencies

As a recipient and sub-recipient of federal funding, FBT's Program of Projects (POP) is included within the Houston Galveston Area Council's (H-GAC's) Transportation Improvement Plan (TIP) and Regional Transportation Plan (RTP). Their public notification provides opportunities for public meetings with a comment period of not less than 30 days. Additional opportunities for public review are provided informally throughout the TIP development process. As a sub-recipient of federal funding from Houston METRO, FBT's projects related to these funds are included in METRO's public input processes.

FBT often partners with other local governments and organizations. These entities provide their own programs and offer interested parties' opportunities to address concerns and receive comments.

Any comments obtained through any of the above-listed processes will be considered.

Other

FBT may also participate in public input processes hosted by other entities either by providing funding or locations, additional advertising or promotions, materials, and/or by attending these events to provide additional information or to receive or address

comments related to its projects.

FBT may also use additional outreach methods not specifically listed such as social media notices, text messaging, bulk mailers, etc.

TRANSLATION AND SPECIAL ACCOMMODATION SERVICES

FBT will hold all community meetings or public hearings in locations easily accessible to the public. Reasonable accommodations will be provided for persons attending meetings or functions. Requests from persons needing special accommodations should be received three (3) business days prior to a function.

Public meetings, hearings, etc. will be conducted in English. Requests for language interpreters or other special communication needs should be made at least three (3) business days prior to a function.

All notices and information outlined on the Fort Bend County website can be translated into 80 different languages. Individuals can easily change the content on the website to any of these languages by simply using the language drop down bar located on the top right corner of the webpage.

CUSTOMER SERVICE

Fort Bend Transit welcomes your comments and complaints. We are committed to using passenger feedback as a tool to improve our quality of service. If you experience any dissatisfaction with the service and wish to file a complaint, you can call our office and our staff will take a verbal complaint.

The Americans with Disabilities Act of 1990 (ADA) prohibits discrimination and ensures equal opportunity and access for persons with disabilities. Title VI of the Civil Rights Act of 1964 prohibits discrimination on the basis of race, color, or national origin in programs & activities receiving federal financial assistance (42 U.S.C. Section 2000d).

Fort Bend County is committed to ensure nondiscriminatory transportation in support of our mission to provide high quality transit services for all Americans. We are committed to taking affirmative action to assure that no person shall be excluded with regard to the routing, scheduling, or quality of service of transportation service on the grounds of race, color, national origin, religion, sex, disability, age, or other protected status. If you believe you have been subjected to discrimination, you may file a complaint with the Fort Bend Transit Civil Rights Officer by calling Fort Bend Transit at 281-633-RIDE or by sending a written complaint to:

Fort Bend Transit
ATTN: Civil Rights Officer
301 Jackson Street
Richmond, Texas 77469

Or via email at: transit@fortbendcountytexas.gov

Complaints may also be filed with the following organization no later than 180 days after the date of the alleged discrimination:

Federal Transit Administration's Office of Civil Rights
ATTN: Title VI Program Coordinator
East Building, 5th Floor – TCR
1200 New Jersey Ave., SE
Washington, DC 20590

This Page Intentionally Left Blank

APPENDIX J –PUBLIC NOTICE



KNOW YOUR RIGHTS

Title VI of the civil Rights Act of 1964 prohibits discrimination on the basis of race, color, and national origin in programs & activities receiving Federal financial assistance (42 U.S.C. Section 2000d).

Fort Bend County is committed to practicing non-discrimination. If you believe you have been subjected to discrimination, you may file a complaint with the Fort Bend Transit Civil Rights Officer at 281-633-7433.

A complaint may be filed directly with FTA by filing with the Office of Civil Rights, Attention: Title VI Program Coordinator, East Building, 5th Floor - TCR, 1200 New Jersey Ave., SE, Washington, DC 20590

For additional information on the current Title VI Program, or if information is needed in another language, please call the Civil Rights Officer at 281-633-7433 or email at transit@fortbendcountytx.gov

Para obtener información adicional sobre el Programa de Título VI actual, o si se necesita información en otro idioma, llame al Oficial de Derechos Civiles al 281-633-7433 o envíe un correo electrónico al transit@fortbendcountytx.gov

Para sa karagdagang impormasyon tungkol sa kasalukuyang Programa ng Pamagat VI, o kung kailangan ng impormasyon sa ibang wika, mangyaring tawagan ang Opisyal ng Karapatang Sibil sa 281-633-7433 o mag-email sa transit@fortbendcountytx.gov

للحصول على معلومات إضافية حول برنامج الباب السادس الحالي ، أو إذا كانت هناك حاجة إلى معلومات بلغة أخرى ، يرجى الاتصال بمسؤول الحقوق المدنية على الرقم 281-633-7433 أو إرسال بريد إلكتروني إلى transit@fortbendcountytx.gov

有关当前 Title VI 计划的更多信息，或者如果需要其他语言的信息，请致电 281-633-7433 或发送电子邮件至 transit@fortbendcountytx.gov

वर्तमान शीर्षक VI प्रोग्राम विशेषी वधारानी माहिती माटे, अथवा जो अन्य भाषामां माहितीनी जरूर होय, तो कृपा करीने सिविल राइट्स ऑफिसरने 281-633-7433 पर कोल करो अथवा एमेल transit@fortbendcountytx.gov

वर्तमान शीर्षक VI कार्यक्रम के बारे में अतिरिक्त जानकारी के लिए, या यदि अन्य भाषा में जानकारी की आवश्यकता है, तो कृपया नागरिक अधिकार अधिकारी को 281-633-7433 पर कॉल करें या transit@fortbendcountytx.gov पर ईमेल करें।

നിലവിലെ ശീർഷക VI പ്രോഗ്രാമിനെക്കുറിച്ചുള്ള കൂടുതൽ വിവരങ്ങൾക്ക്, അല്ലെങ്കിൽ മറ്റൊരു ഭാഷയിൽ വിവരങ്ങൾ ആവശ്യമുണ്ടെങ്കിൽ, 281-633-7433 എന്ന നമ്പറിൽ സിവിൽ റൈറ്റ്സ് ഓഫീസറെ വിളിക്കുക അല്ലെങ്കിൽ ഇമെയിൽ transit@fortbendcountytx.gov

موجودہ عنوان VI پروگرام کے بارے میں اضافی معلومات کے لئے، یا اگر کسی دوسری زبان میں معلومات کی ضرورت ہے تو، براہ کرم سول رائٹس آفیسر کو 281-633-7433 پر کال کریں یا ای میل transit@fortbendcountytx.gov

Để biết thêm thông tin về Chương trình Tiêu đề VI hiện tại hoặc nếu cần thông tin bằng ngôn ngữ khác, vui lòng gọi cho Viên chức Dân quyền theo số 281-633-7433 hoặc gửi email transit@fortbendcountytx.gov

**APPENDIX K – COMMISSIONER'S COURT MINUTES
ADOPTING PROGRAM**

Approved by
Commissioners Court
April 22, 2025