

March 11, 2025

Commissioner Grady Prestage
Fort Bend County Precinct One
301 Jackson Street
Richmond, Texas 77469

Re: Sienna Parkway Section 1 Street Dedication
Bridge over Channel 3-3 Repairs
Sienna Municipal Utility District No. 5
LJA Job No. 1415-0200 (6.1)

Dear Commissioner Prestage:

LJA is requesting permission to close lanes and re-route traffic while the of repairs along Sienna Parkway are ongoing. During the Fort Bend County inspection, it was determined that several areas within these limits of Sienna Parkway needed the pavement to be removed and replaced. LJA has coordinated with Fort Bend County's traffic engineer regarding the traffic control for the repairs as well as the dates regarding closing the roadways. It is our intention to begin once school has completed in late May and finish prior to starting in August.

The construction along the bridge is proposed to close southbound Sienna Parkway just after the intersection at Scanlan Trace (South) to just north of the intersection at Mount Logan in order to repair the approaches of the bridge in both directions. This construction is anticipated to begin in early June and is intended to be complete prior to school re-opening in August 2025. Electronic signs will be used alerting the residents to traffic changes ahead two weeks prior to any detours being posted or construction beginning. This signage will be placed 2 weeks prior to closing the roadway to warn the public of upcoming traffic changes. This proposed closure will not cut off access to the existing neighborhoods within the Sienna Development. Detour signage and flagmen will be placed as per the attached traffic control plan.

LJA is proposing to place electronic signs at the intersection of Sienna Parkway and Scanlan Trace (South) and Sienna Parkway at Waters Lake Boulevard (South) starting May 16th informing the community of the upcoming closure and timeline for repairs and will remain in use until the completion of all roadway repairs. We are requesting that the road closure begin on June 2nd and remain closed until the completion of the repairs. We understand that weather and timing of materials may cause delays LJA will also coordinate with the county and Sienna Home Owners Association so that they may get notifications out to the residents as well.

Should you have any questions or need any additional information concerning these plans, please call me at 713.953.5230.

Sincerely,



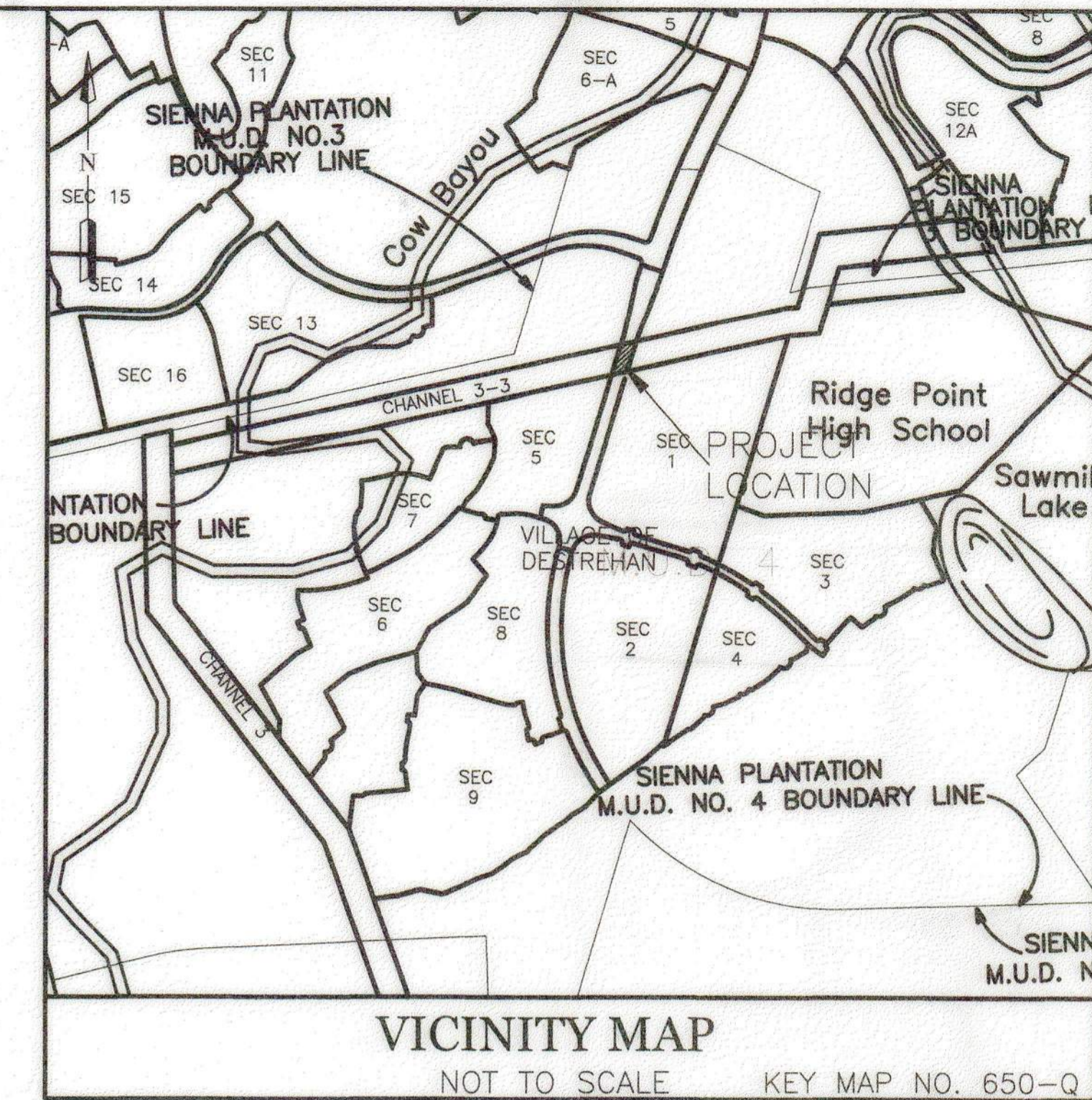
Amanda Carriage, PE
Vice President

AC/sb

CONSTRUCTION PLANS FOR SIENNA PARKWAY BRIDGE OVER CHANNEL 3-3 SIENNA PLANTATION MUNICIPAL UTILITY DISTRICT NO.5 CITY OF MISSOURI CITY, FORT BEND COUNTY, TEXAS

JOB NO. 1415-1402

DATE: JUNE 2014
SPMUD 5 TCEQ PWS ID # 0790490



NOTES

1. THESE PLANS WERE PREPARED TO MEET OR EXCEED FORT BEND COUNTY AND CITY OF MISSOURI CITY SUBDIVISION RULES AND REGULATIONS (AS APPLICABLE) AS CURRENTLY AMENDED.
2. CONSTRUCTION WILL BE MONITORED BY A PROFESSIONAL ENGINEER TO INSURE COMPLIANCE WITH THE CONSTRUCTION PLANS AND SPECIFICATIONS.
3. CONTRACTOR SHALL NOTIFY THE FOLLOWING ENTITIES AT LEAST 48 HOURS PRIOR TO COMMENCEMENT OF CONSTRUCTION.

MISSOURI CITY PUBLIC WORKS DEPARTMENT	(281) 403-8570
SIENNA PLANTATION LEVEE IMPROVEMENT DISTRICT (MICHAEL RUSK, P.E.)	(713) 953-5181
LJA ENGINEERING, INC. (DEON FELAN)	(281) 384-2012
FORT BEND COUNTY DRAINAGE DISTRICT (DWAYNE GRIGAR)	(281) 342-2863
FORT BEND COUNTY ENGINEER (RICHARD W. STOLLEIS, P.E.)	(281) 342-3039
DOW PIPELINE COMPANY (PEDRO LAGOS)	(281) 471-9440 Ext.222
SI-ENVIRONMENTAL (CHRIS WILSON)	(832) 490-1570
TOLL BROTHERS (KARL MISTRY)	(281) 894-8655
EL PASO FIELD SERVICES (FORMERLY COASTAL PIPELINE) (STEVE SWAFFORD)	(713) 854-3903
PHILLIPS PIPELINE COMPANY (CHARLES FRETWELL)	(713) 456-1413
SIENNA PLANTATION M.U.D. NO. 5 (MR. CHAD HABLINSKI, P.E.)	(713) 783-7788
4. ONLY AUTHORIZED INDIVIDUALS FROM EITHER THE TESTING COMPANY OR A REPRESENTATIVE OF LJA Engineering, Inc. HAVE THE AUTHORITY TO ADD WATER TO A CONCRETE TRUCK.
5. CONTRACTOR SHALL CONTACT THE FOLLOWING UTILITY COMPANIES TO VERIFY THE LOCATION OF THEIR UTILITIES 48 HOURS PRIOR TO COMMENCEMENT OF EXCAVATION OR CONSTRUCTION IN THE VICINITY OF THEIR FACILITIES.

CENTERPOINT ENERGY SOUTH OF RAILROAD (STAVANOVA)	(713) 945-6274
CENTERPOINT ENERGY NORTH OF RAILROAD (MARSHA SOMMERFELD)	(281) 561-3240
SI-ENERGY GAS (ROBERT SHOCKLEY)	(281) 431-4486
G.T.E. TELEPHONE COMPANY (JESSE FLOWER)	(281) 499-2574
EN-TOUCH (JASON BONE)	(281) 778-1000
TEXAS ONE CALL	1-800-245-4545
6. CONTRACTOR SHALL CONTACT ANY PERTINENT PIPELINE COMPANIES AT LEAST 48 HOURS PRIOR TO COMMENCEMENT OF EXCAVATION OR CONSTRUCTION IN THE VICINITY OF THEIR EASEMENTS AND/OR RIGHT-OF-WAYS.
7. THE OPENING AND CLOSING OF ALL VALVES ON EXISTING WATER LINES MUST BE PERFORMED EXCLUSIVELY BY THE DISTRICT OPERATOR. CONTRACTOR/APPLICANT SHALL CONTACT SI ENVIRONMENTAL AT (832) 490-1610 FOR ALL REQUIRED TAPPING AND INSPECTION SERVICES. SI-ENVIRONMENTAL (CHRIS WILSON) (832) 490-1570
8. THE DISTRICT OPERATOR MUST PERFORM ALL WATER LINE BACTERIOLOGICAL TESTS. LJA Engineering, Inc. SHALL BE RESPONSIBLE FOR CONTACTING THE DISTRICT.
9. CONTRACTOR SHALL BE RESPONSIBLE FOR ALL TRAFFIC FLOW DETOURING INCLUDING LANE CLOSURES, TRAFFIC BARRIERS, SIGNAGE, AND ALL OTHER APPURTENANCES (INCIDENTAL TO BID). ONE LANE OF CONTINUAL TRAFFIC FLOW IN EACH DIRECTION SHALL REMAIN OPEN AT ALL TIMES.
10. IN THE CASE OF A CONFLICT BETWEEN THE CITY OF MISSOURI CITY, FORT BEND COUNTY, PLANS OR SPECIFICATIONS, THE MORE STRINGENT SHALL APPLY.
11. CONTRACTOR SHALL PROVIDE SEALED TRENCH SAFETY DRAWINGS TO THE CITY OF MISSOURI CITY AT THE TIME OF CONSTRUCTION PERMIT ISSUANCE.
12. CHANNEL 3-3 SHALL BE MAINTAINED BY SIENNA PLANTATION LEVEE IMPROVEMENT DISTRICT OF FORT BEND COUNTY, TEXAS.
13. CONTRACTOR SHALL NOTIFY FORT BEND COUNTY ENGINEERING 48 HOURS PRIOR TO COMMENCING CONSTRUCTION AND 24 HOURS PRIOR TO ANY PAVING OPERATION AT EMAIL: CONSTRUCTION@FORTBENDCOUNTYTX.GOV
14. BRIDGE IS DESIGNED ACCORDING TO AASHTO LRFD SPECIFICATIONS. ALL BRIDGE ITEMS SHALL BE GOVERNED BY THE TEXAS DEPARTMENT OF TRANSPORTATION JUNE 1, 2004 SPECIFICATIONS EXCLUDING ITEMS 1 THROUGH 9.
15. CONTRACTOR SHALL OBTAIN ALL PERMITS REQUIRED BY FORT BEND COUNTY.
16. ENGINEER UPON COMPLETION OF CONSTRUCTION SHALL PROVIDE FORT BEND COUNTY A COMPLETE SET OF AS BUILT DRAWINGS.

- SHEET INDEX**
- | | | |
|---|--|--|
| <ol style="list-style-type: none"> 1 COVER SHEET 2 GENERAL CONSTRUCTION NOTES I-MC-1-04 3 GENERAL CONSTRUCTION NOTES II-MC-02-04 4 FINAL PLAT -- FOR INFORMATION ONLY 5 FINAL PLAT -- FOR INFORMATION ONLY <li style="text-align: center;">BRIDGE 6 BRIDGE LAYOUT 7 ESTIMATED QUANTITIES & BEARING SEAT ELEVATIONS 8 ABUTMENT 1 9 ABUTMENT 4 10 ABUTMENT DETAILS 11 BENT 2 12 BENT 3 13 FRAMING PLAN 14 SLAB PLAN 15 MISCELLANEOUS DETAILS (1 of 2) 15A MISCELLANEOUS DETAILS (2 of 2) 16 PRESTRESSED CONCRETE I-GIRDER DESIGNS (NON-STANDARD SPANS) <li style="text-align: center;">BRIDGE STANDARD DETAILS 17 COMMON FOUNDATION DETAILS FD 18 COMMON FOUNDATION DETAILS FD 19 BRIDGE APPROACH SLAB BAS-C (MOD) (HOUSTON DISTRICT) 20 PRESTRESSED CONCRETE I-GIRDER DETAILS IGD | <ol style="list-style-type: none"> 21 PRESTRESSED CONCRETE I-GIRDER DETAILS IGD 22 ELASTOMERIC BEARING AND GIRDER END DETAILS IGBE 23 ELASTOMERIC BEARING AND GIRDER END DETAILS IGBE 24 ELASTOMERIC BEARING AND GIRDER END DETAILS IGBE 25 MISCELLANEOUS SLAB DETAILS IGMS 26 THICKENED SLAB END DETAILS IGTS 27 MIN ERECTION & BRACING REQUIREMENTS MEBC(C) 28 MIN ERECTION & BRACING REQUIREMENTS MEBC(C) 29 PRESTRESSED CONCRETE PANELS PCP 30 PRESTRESSED CONCRETE PANELS PCP 31 PRESTRESSED CONCRETE PANELS PCP 32 PRESTRESSED CONCRETE PANELS PCP 33 PERMANENT METAL DECK FORMS PMDF 34 PERMANENT METAL DECK FORMS PMDF 35 SEALED EXPANSION JOINT (TYPE A) SEJ-A 36 SEALED EXPANSION JOINT (TYPE A) SEJ-A 37 BRIDGE SIDEWALK EXPANSION JOINT COVER PLATE (ALL SKEWS) BS-EJC 38 BRIDGE RAISED SIDEWALK AND MEDIAN DETAILS 39 BRIDGE RAISED SIDEWALK AND MEDIAN DETAILS 40 CONCRETE RIPRAP AND SHOULDER DRAINS 41 CEMENT STABILIZED SAND AND BACKFILL BRIDGE ABUTMENT 42 PRESTRESSED CONCRETE PANEL FABRICATION DETAILS | <p>UTILITIES, PAVING, AND EROSION CONTROL</p> <ol style="list-style-type: none"> 43 EROSION CONTROL AND GRADING PLAN LAYOUT 44 WATERLINE PLAN & PROFILE 45 STORM SEWER OUTFALL CONSTRUCTION DETAILS -- MC-04-04 46 WATER LINE CONSTRUCTION DETAILS -- MC-11-04 47 WATER LINE CONSTRUCTION DETAILS -- MC-12-04 48 WATER LINE & SANITARY SEWER F.M. BEDDING DETAIL -- MC-15-04 49 CONCRETE PAVEMENT CONSTRUCTION DETAIL -- MC-17-04 50 WHEEL CHAIR RAMP & SIDEWALK DETAILS I -- MC-20-04 51 WHEEL CHAIR RAMP & SIDEWALK DETAILS II -- MC-21-04 52 PAVEMENT MARKING DETAILS -- MC-24-04 53 SIGN CONSTRUCTION DETAIL -- MC-25-04 54 EROSION CONTROL DETAILS |
|---|--|--|

ARCHITECTURAL DETAILS
55 NOTES & MATERIALS SCHEDULE
56 BRIDGE COLUMN PLAN & DETAILS
57 VEHICULAR BARRIER DETAILS
REMOVED FROM CONTRACT

<p>I HEREBY CERTIFY THAT THESE RECORD DRAWINGS SUBSTANTIALLY REPRESENT THE CONSTRUCTED CONDITION. THE PLANS WERE PREPARED AND THE CONSTRUCTION WAS PERFORMED IN SUBSTANTIAL ACCORDANCE WITH THE CITY OF MISSOURI CITY DESIGN STANDARDS.</p> <p style="text-align: right;"><i>[Signature]</i> 9.21.15 OMAR NOE ESCOBAR, JR. P.E. 107281 DATE</p>	<p>I HEREBY CERTIFY THAT THIS DRAWING REFLECTS THE IMPROVEMENTS CONSTRUCTED AS TO SIZE, LOCATION, AND GRADE; AND THAT THE CONSTRUCTION WAS IN SUBSTANTIAL COMPLIANCE WITH THE CONTRACT DOCUMENTS.</p> <p style="text-align: right;"><i>[Signature]</i> 9.22.15 CONTRACTOR: _____ DATE: _____ TITLE: _____</p>
--	--

FORT BEND COUNTY ENGINEERING DEPARTMENT

ENGINEER: *[Signature]* RICHARD W. STOLLEIS, P.E. *J. Shrey Shewinski, P.E.*
DATE: **10/13/14** *10/3/24*

THESE SIGNATURES ARE VOID IF CONSTRUCTION HAS NOT COMMENCED IN (1) YEAR FROM DATE OF APPROVAL.

APPROVED: *[Signature]*
DEVELOPMENT COORDINATOR
DATE: **10/13/14** *10-9-24*

MISSOURI CITY TEXAS
DEPARTMENT OF PUBLIC WORKS
Robert D. Upton, P.E., City Engineer

APPROVED: *[Signature]* DATE: **9/18/14**

ENGINEER:

LJA Engineering, Inc.

2929 Briarpark Drive
Suite 600
Houston, Texas 77042-3703

Phone 713.953.5200
Fax 713.953.5026
FRN-F-1386

BRIDGE REPAIR SHEET 10F4
SHEET 1 OF 57



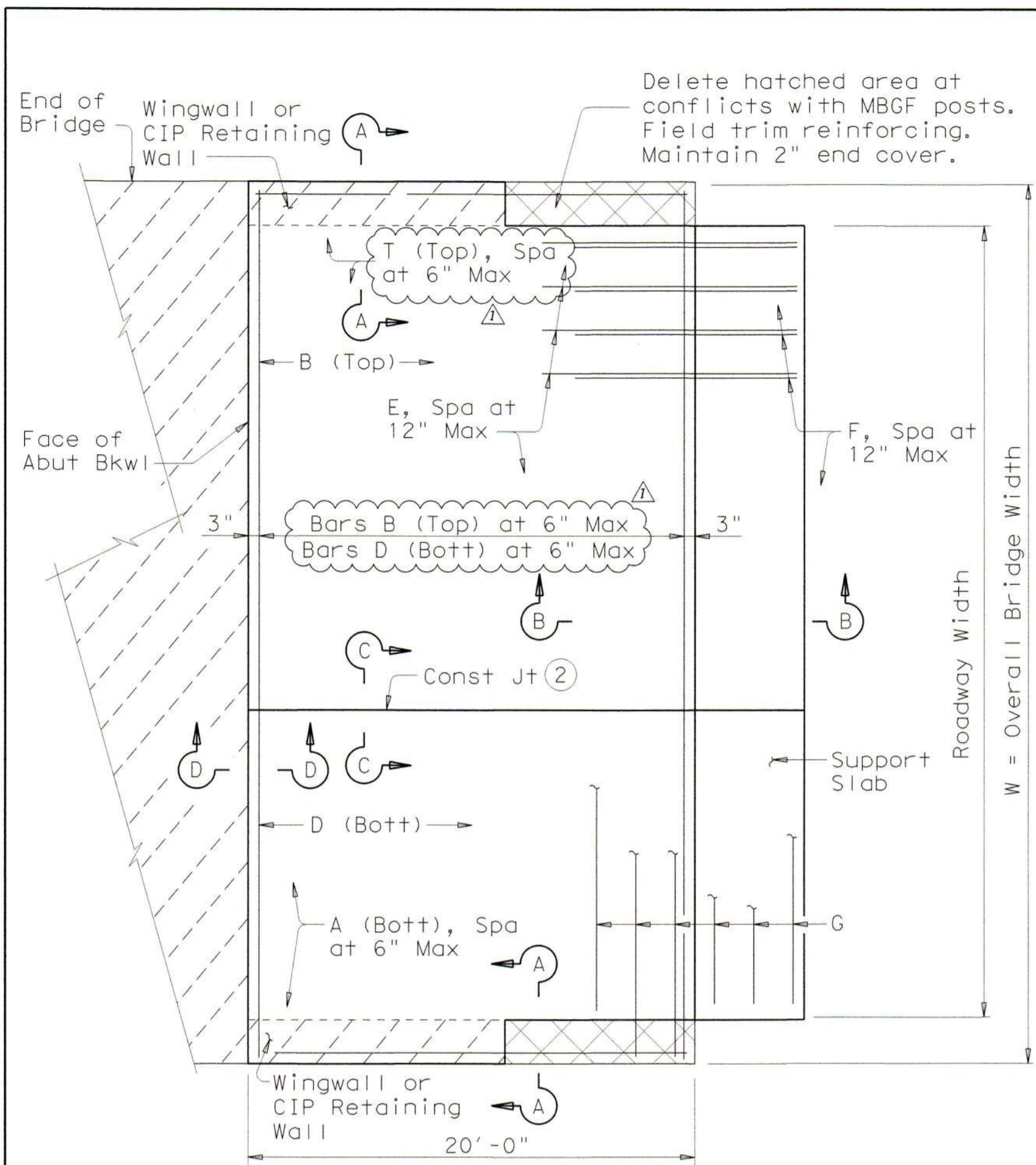
APPROVED FOR CONSTRUCTION

BY *[Signature]* DATE **10/14/14**

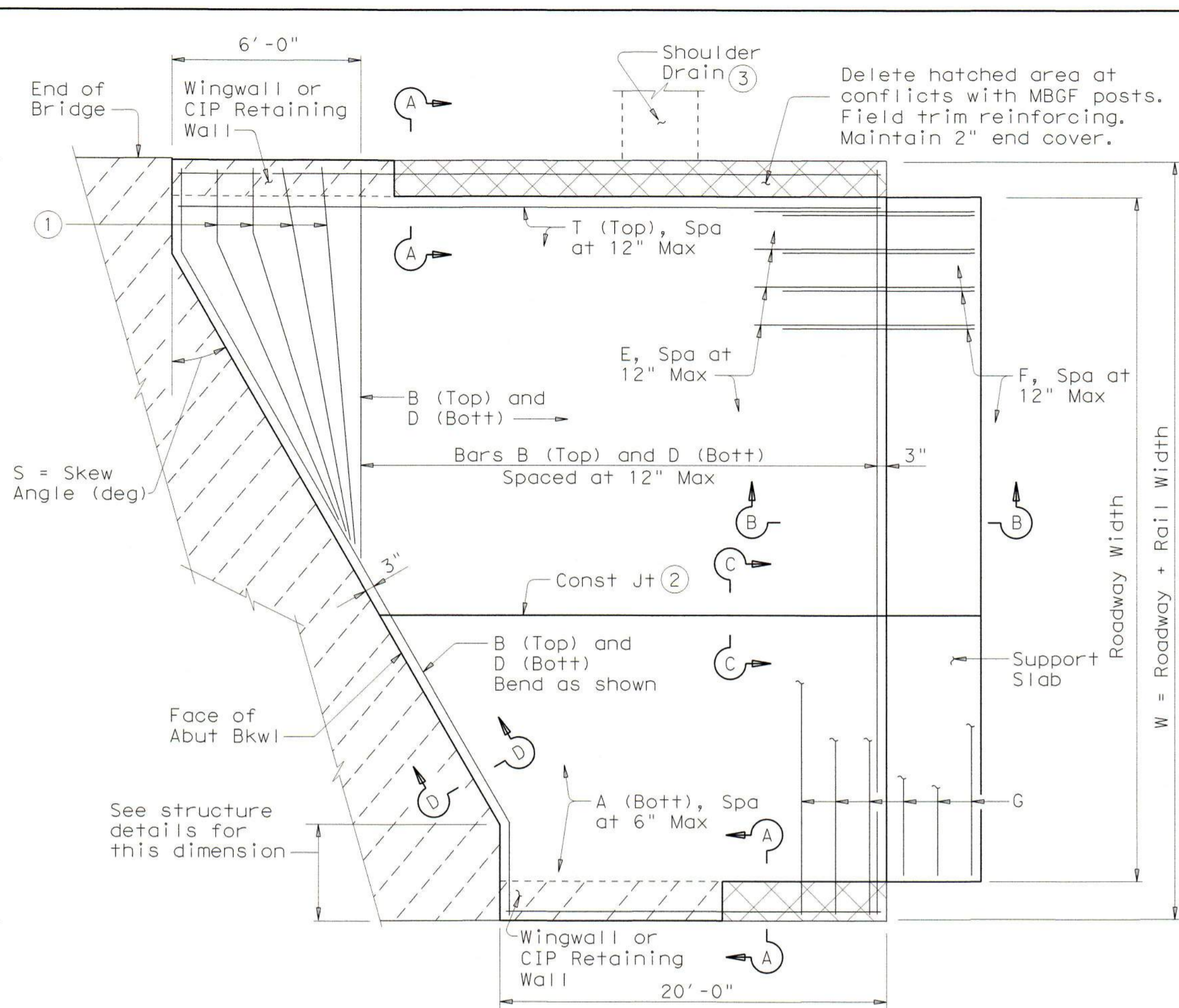
OWNER: TOLL -GTIS PROPERTY OWNER, LLC

DISCLAIMER: The use of this standard is governed by the "Texas Engineering Practice Act". No warranty of any kind is made by TxDOT for any purpose whatsoever. TxDOT assumes no responsibility for the conversion of this standard to other formats or for incorrect results or damages resulting from its use.

LEVELS DISPLAYED	
1	
2	
3	
4	
5	
6	
7	
8	
9	
10	



PLAN
(Showing Non-Skewed Approach Slab)



PLAN
(Showing Skewed Approach Slab)

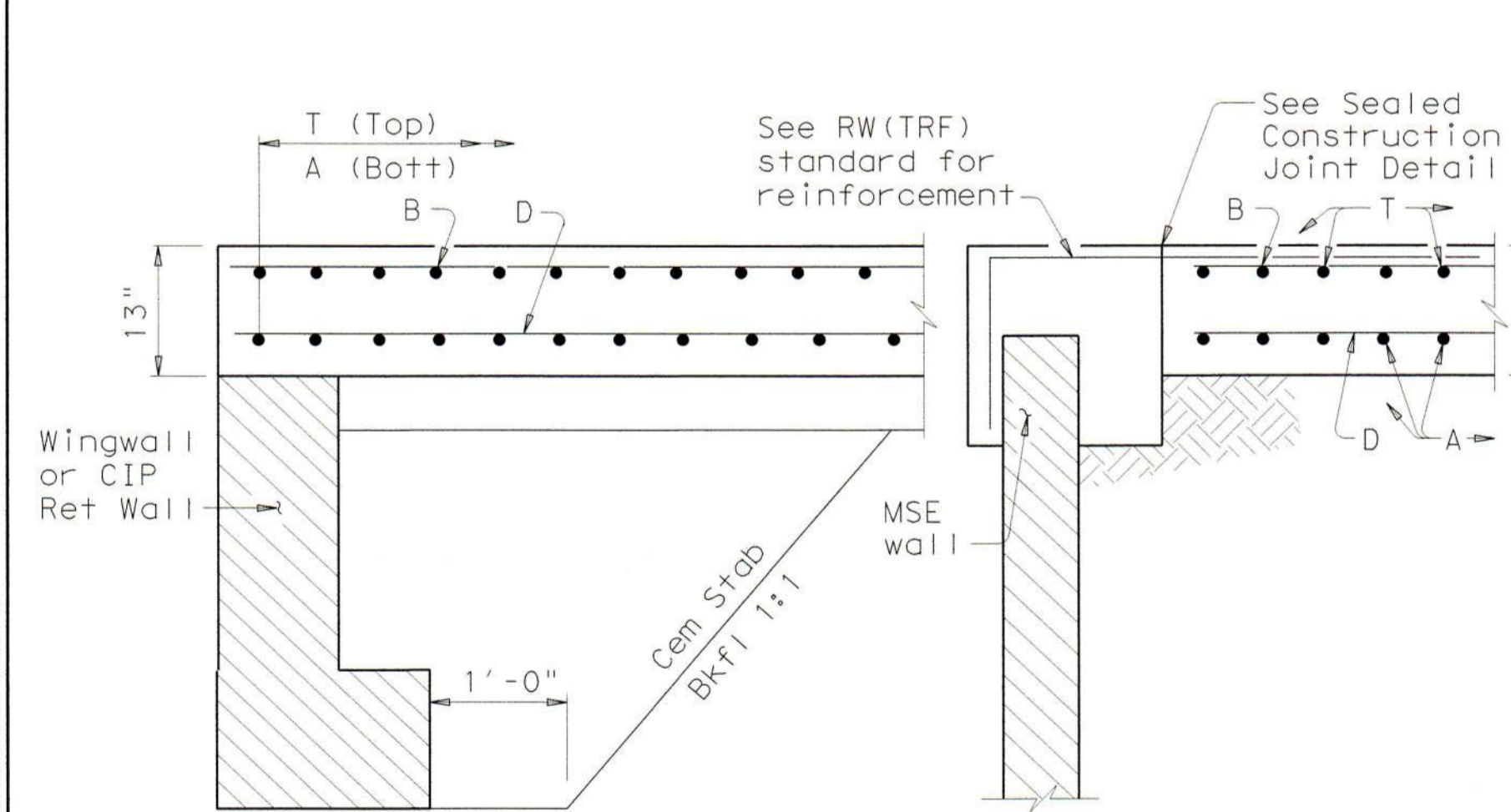
BAR TABLE	
BAR	SIZE
A	#8
B	#5
D	#5
E	#5
F	#5
G	#5
T	#5

APPROXIMATE QUANTITIES (4)	
Reinf steel weight =	8.5 Lbs/SF of Approach Slab
	= 18.4 Lbs/LF of Support Slab
Area of Appr Slab =	$20W + 0.5W^2 \tan S$ (SF)
	(Support Slab not included)
W =	Width of Approach Slab (ft)
S =	Skew Angle (deg)

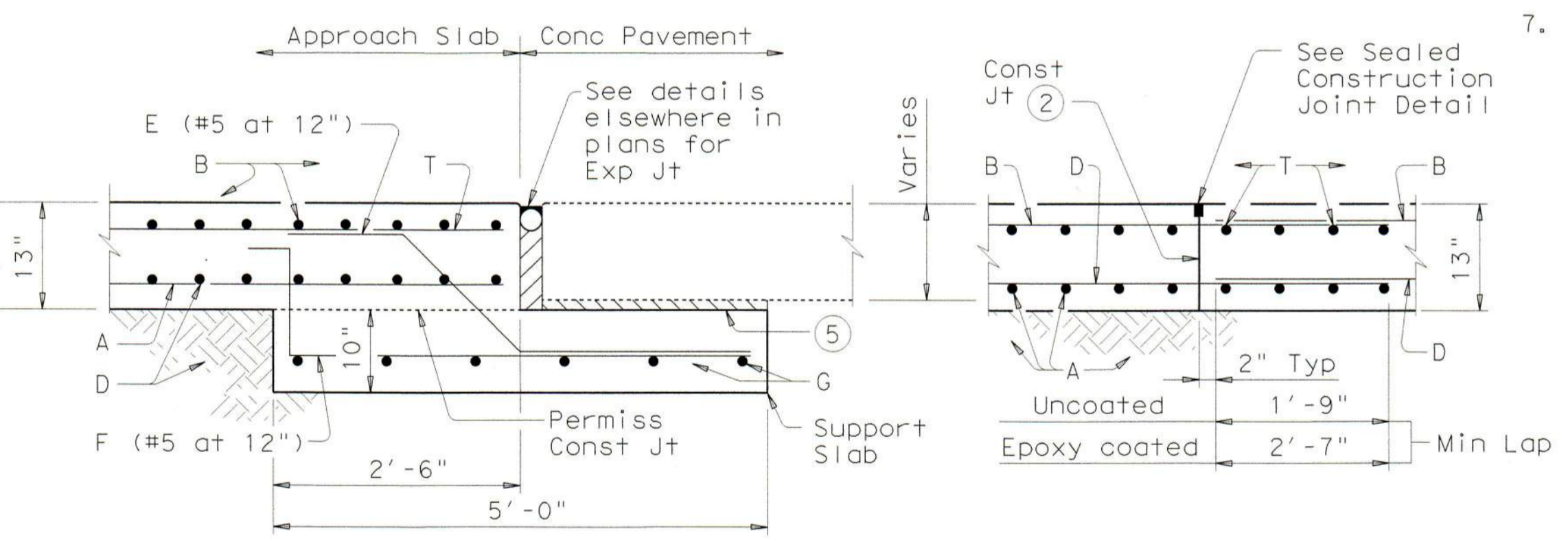
- Flare Bars B and D in this region (1'-6" Max Spa, 3" Min Spa). Minimum flared bar length = 2'-6". Bend bars as necessary.
- Provide longitudinal construction joints that align with longitudinal construction joints in the bridge slab with bridges built in stages. Other longitudinal construction joints must receive approval of the Engineer.
- See details elsewhere in plans for shoulder drain location and details.
- For Contractor's information only.
- On portion of support slab that supports the concrete pavement, adjust top surface elevation, if required, to accommodate concrete pavement thickness. Smooth trowel finish. Oil top of support slab with 60 grade oil and apply heavy coat of powdered graphite. Press down one layer of 30# roofing felt.
- Multiple piece tie bars are acceptable at longitudinal construction joints provided minimum laps shown are achieved.
- See details elsewhere in plans for required cross-slope.
- Place in accordance with Item 438.
- Backer rod shall be 25% larger than joint opening and shall be compatible with the sealant.

GENERAL NOTES:

- Construct approach slab in accordance with Item 422.
- Concrete shall be Class "S" with a minimum compressive strength of 4,000 psi.
- All reinforcing steel shall be Grade 60.
- Construct the subgrade or subbase from the bridge for a minimum distance of 100 feet prior to the approach slab, unless otherwise indicated on the plans.
- Compact and finish the subgrade or foundation for the approach slab to the typical cross-section and to the lines and grades shown on the plans.
- Cure for 4 days using water or membrane curing per Item 422.
- Sealant, backer rod and preformed bituminous fiber material is subsidiary to approach slab concrete.

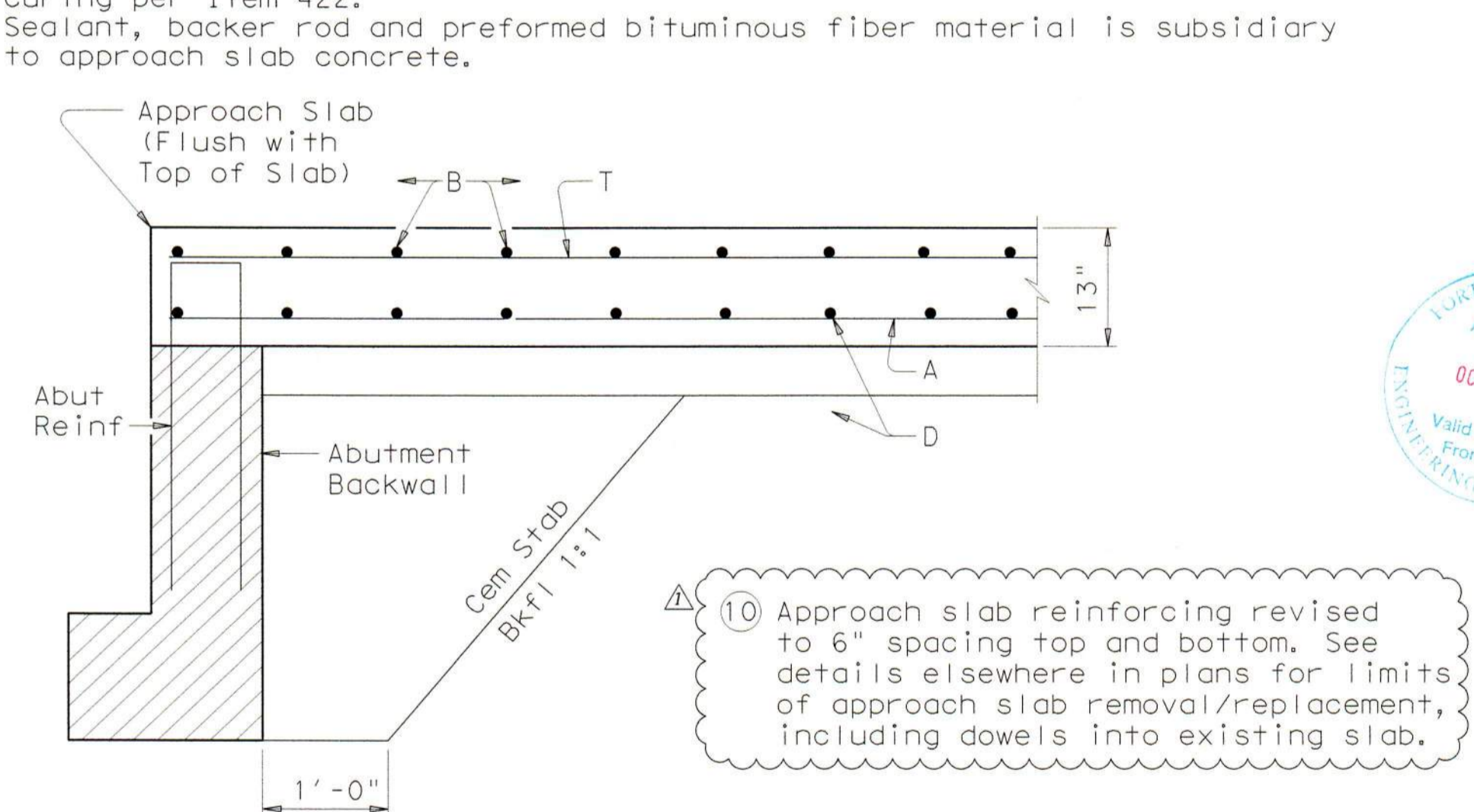


SECTION A-A (10)



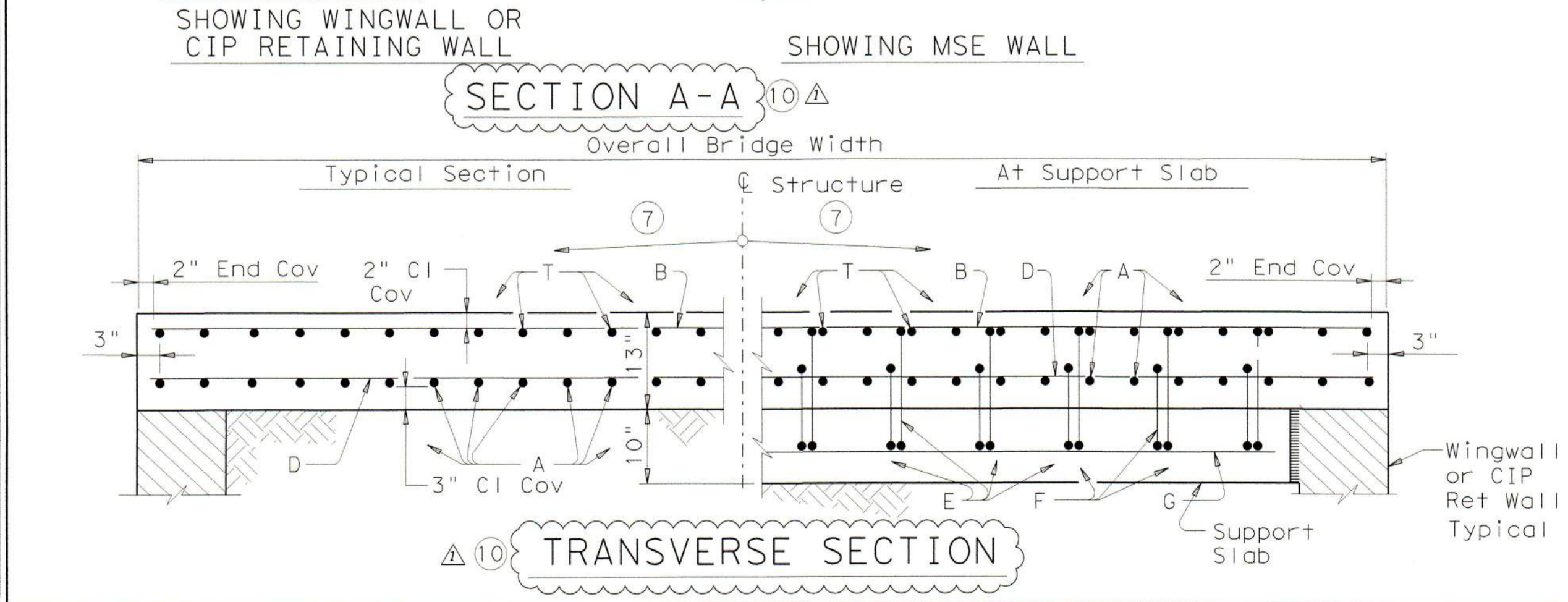
SECTION B-B (10)

SECTION C-C (6)

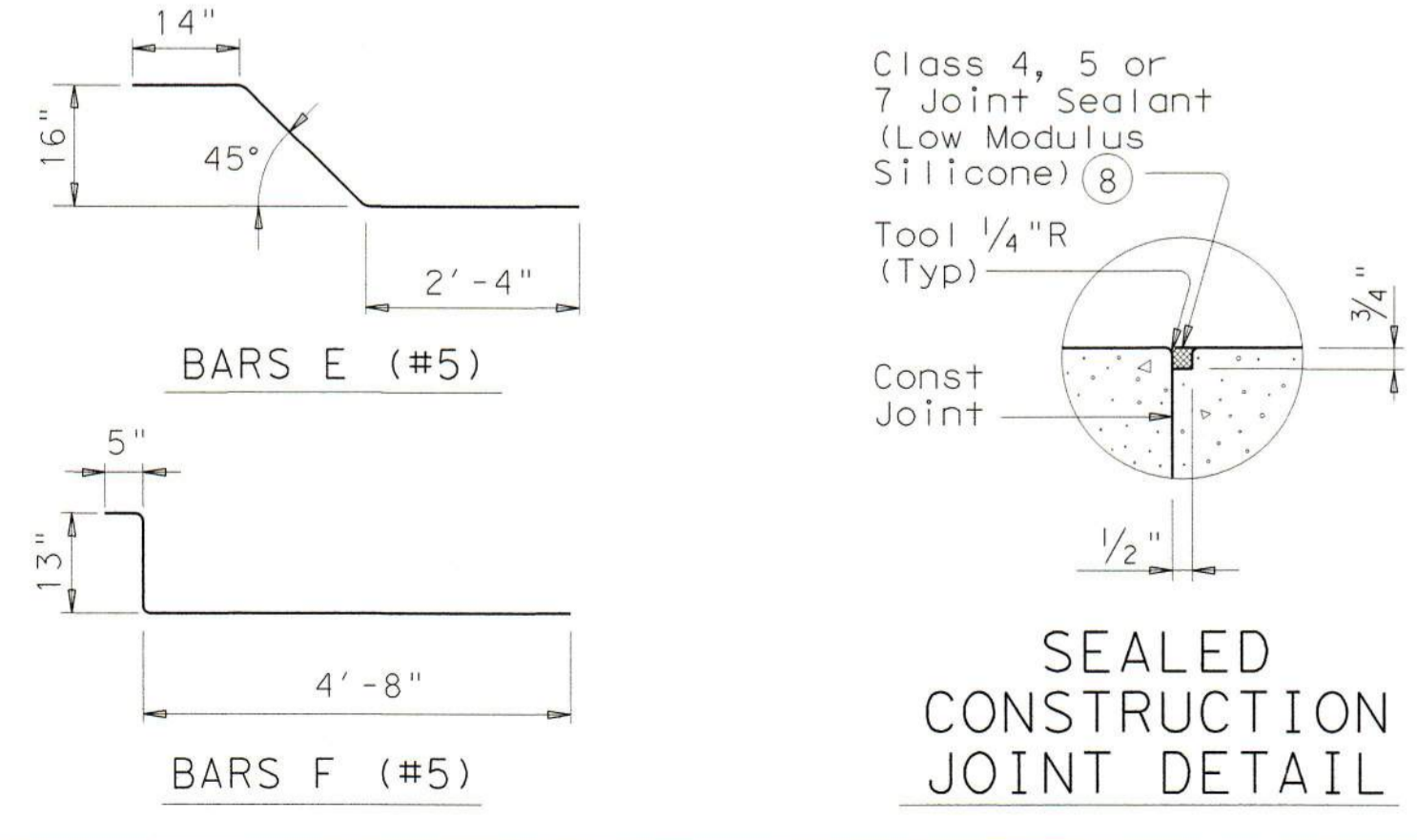


SECTION D-D (10)

(10) Approach slab reinforcing revised to 6" spacing top and bottom. See details elsewhere in plans for limits of approach slab removal/replacement, including dowels into existing slab.



TRANSVERSE SECTION (10)



SEALING JOINT DETAIL



LJA Engineering, Inc. LJA
FRN-F-1386

RICK J. HARENBERG
143744
LICENSED PROFESSIONAL ENGINEER
8/2/2024

Texas Department of Transportation
Houston District

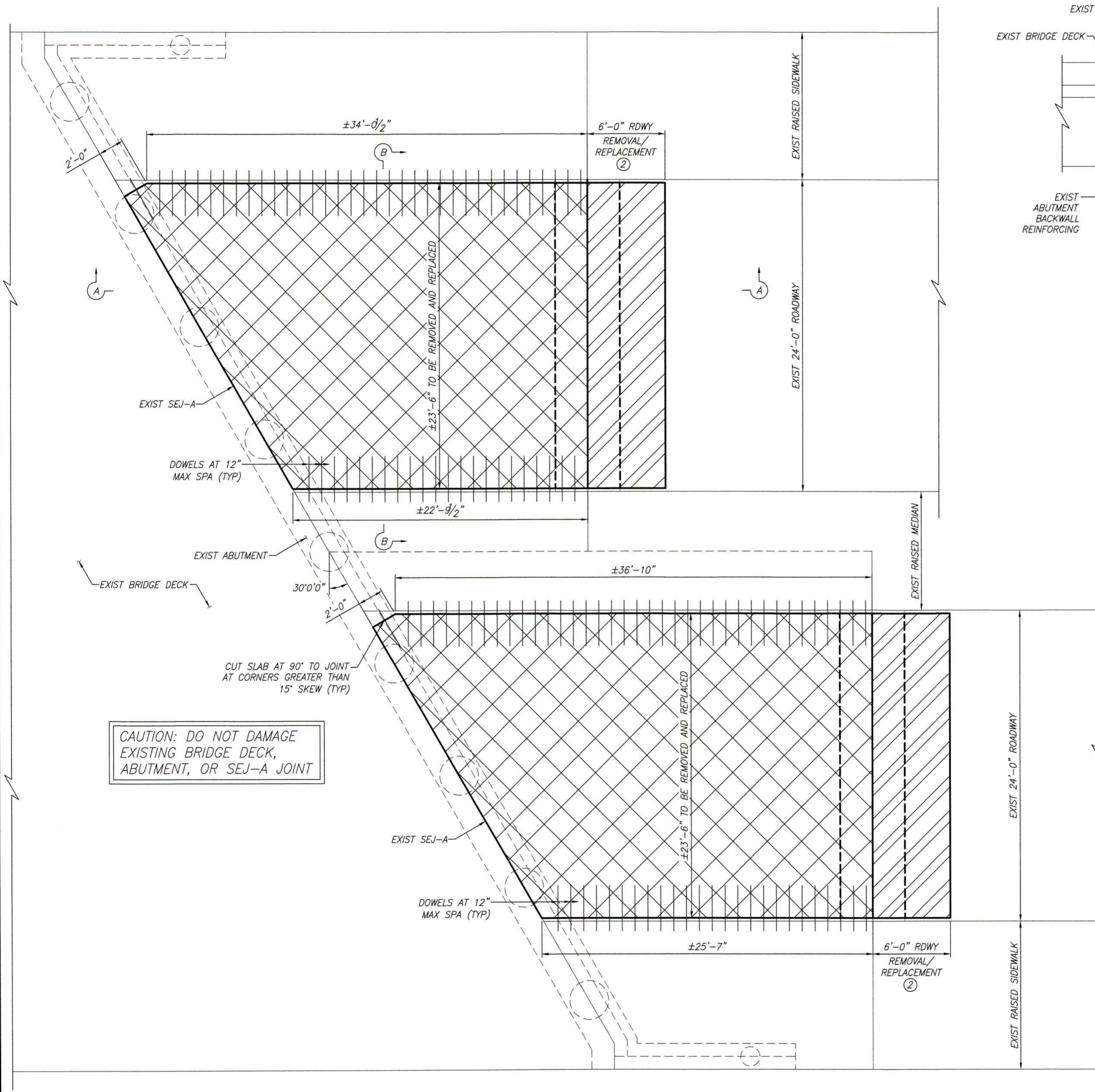
BRIDGE APPROACH SLAB CONCRETE PAVEMENT BAS-C (MOD)

FILE: STDB10B.dgn	DN: TxDOT	CK: TxDOT	DR: TxDOT	CR: TxDOT
© TxDOT March 2009	DISTRICT	PROJECT NO.	SHEET	
4/20/2015 updated to 2014 standard	COUNTY	CONTROL SECT	JOB	HIGHWAY
8/02/2024 revised reinf spacing				

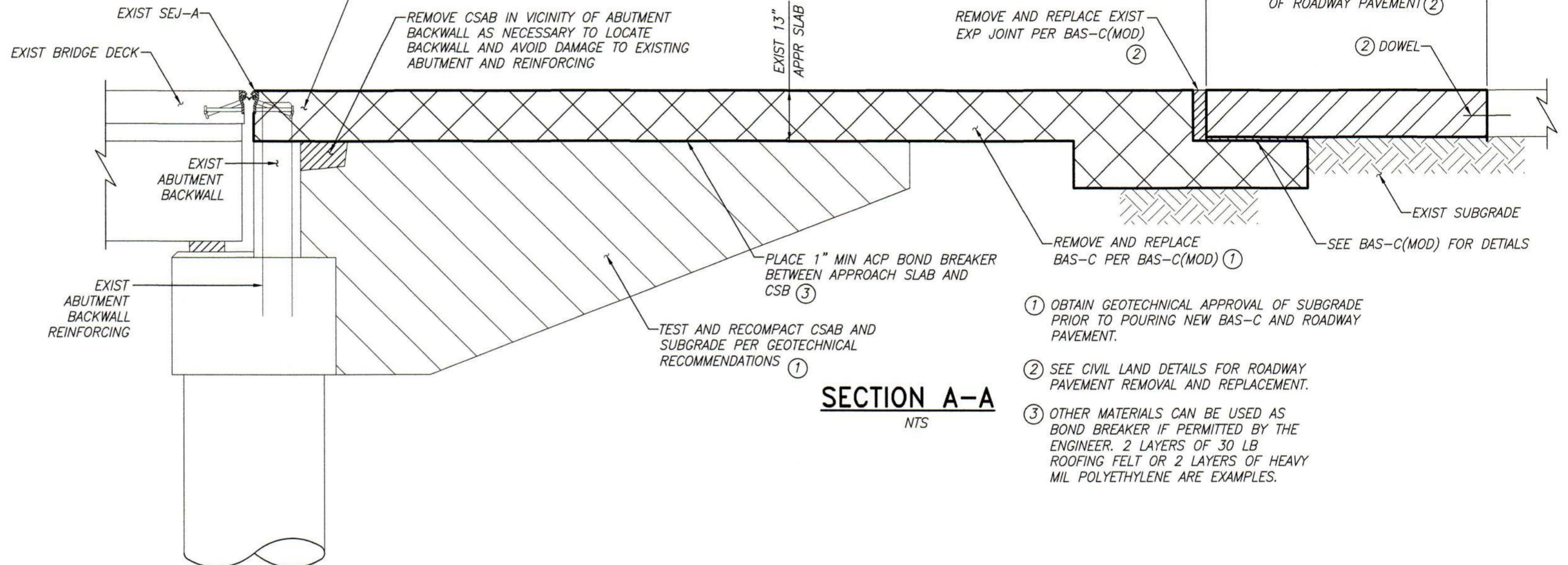
STDB10B

CAUTION: DO NOT DAMAGE EXISTING BRIDGE DECK, ABUTMENT, OR SEJ-A JOINT

CAUTION: DO NOT DAMAGE EXISTING SEJ-A, EXISTING BRIDGE SLAB, OR ABUTMENT BACKWALL REINFORCING. CHIP CONCRETE WITH MAXIMUM 15 LB HAMMER OR HYDRO-DEMOLITION OR OTHER APPROVED MEANS AS NECESSARY IN THE VICINITY OF THE EXISTING JOINT AND ABUTMENT BACKWALL TO AVOID DAMAGE. ENSURE EXISTING JOINT POSITION IS MAINTAINED THROUGHOUT CONSTRUCTION. NOTIFY THE ENGINEER OF ANY DAMAGE TO EXISTING JOINT, BRIDGE, OR ABUTMENT.

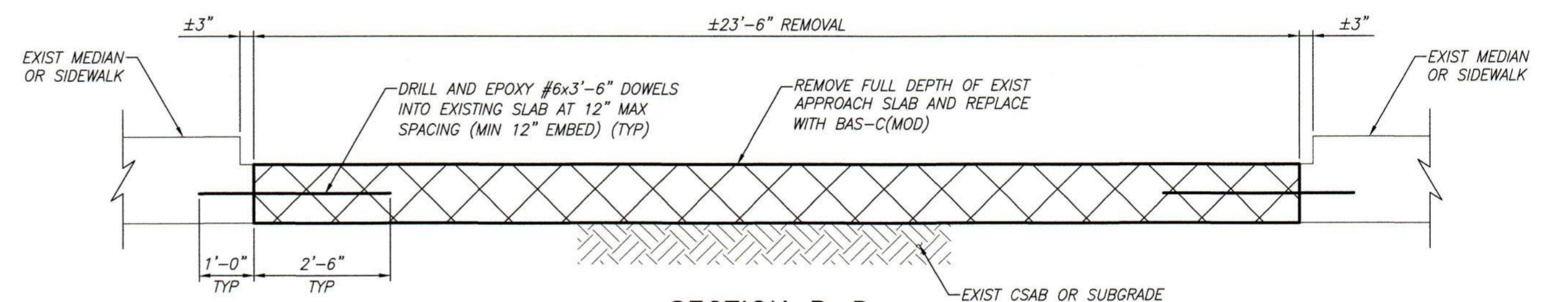


PLAN
NTS



SECTION A-A
NTS

- OBTAIN GEOTECHNICAL APPROVAL OF SUBGRADE PRIOR TO POURING NEW BAS-C AND ROADWAY PAVEMENT.
- SEE CIVIL LAND DETAILS FOR ROADWAY PAVEMENT REMOVAL AND REPLACEMENT.
- OTHER MATERIALS CAN BE USED AS BOND BREAKER IF PERMITTED BY THE ENGINEER. 2 LAYERS OF 30 LB ROOFING FELT OR 2 LAYERS OF HEAVY MIL POLYETHYLENE ARE EXAMPLES.



SECTION B-B
NTS

GENERAL NOTES:

- ALL REINFORCING STEEL SHALL BE GRADE 60.
- APPROACH SLAB CONCRETE SHALL BE CLASS "S" WITH A MINIMUM COMPRESSIVE STRENGTH OF 4,000 PSI.
- PROVIDE TYPE III, CLASS C EPOXY FOR DOWELS IN ACCORDANCE WITH DMS-6100, "EPOXIES AND ADHESIVES." FOLLOW MANUFACTURER'S INSTRUCTIONS TO APPLY THE EPOXY.
- REMOVE LOOSE OR DAMAGED BASE MATERIAL, LEAVING NO LOOSE BASE MATERIAL. RECOMPACT BASE TO THE SATISFACTION OF THE GEOTECHNICAL ENGINEER.
- CLEAN ABUTMENT BACKWALL REINFORCING AND SEJ-A PRIOR TO POURING NEW CONCRETE.
- MIX, PLACE, CURE, AND TEST CONCRETE IN ACCORDANCE WITH ITEM 421, "HYDRAULIC CEMENT CONCRETE."
- CONSTRUCT APPROACH SLAB IN ACCORDANCE WITH BAS-C(MOD) AND ITEM 422, "CONCRETE SUPERSTRUCTURES."
- SEE CIVIL LAND PLAN DETAILS FOR ROADWAY PAVEMENT BEYOND APPROACH SLAB.
- CURE FOR 4 DAYS USING WATER OR MEMBRANE PER BAS-C(MOD). DO NOT OPEN TO TRAFFIC UNTIL THE CONCRETE HAS ATTAINED THE SPECIFIED STRENGTH.



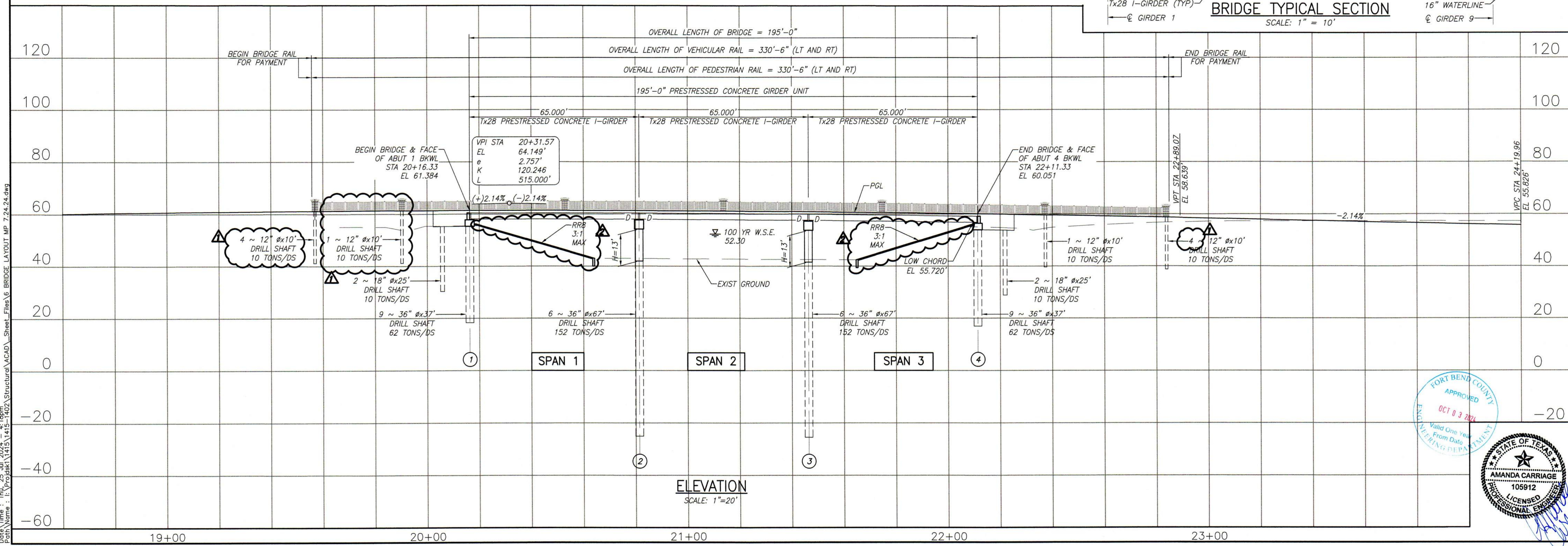
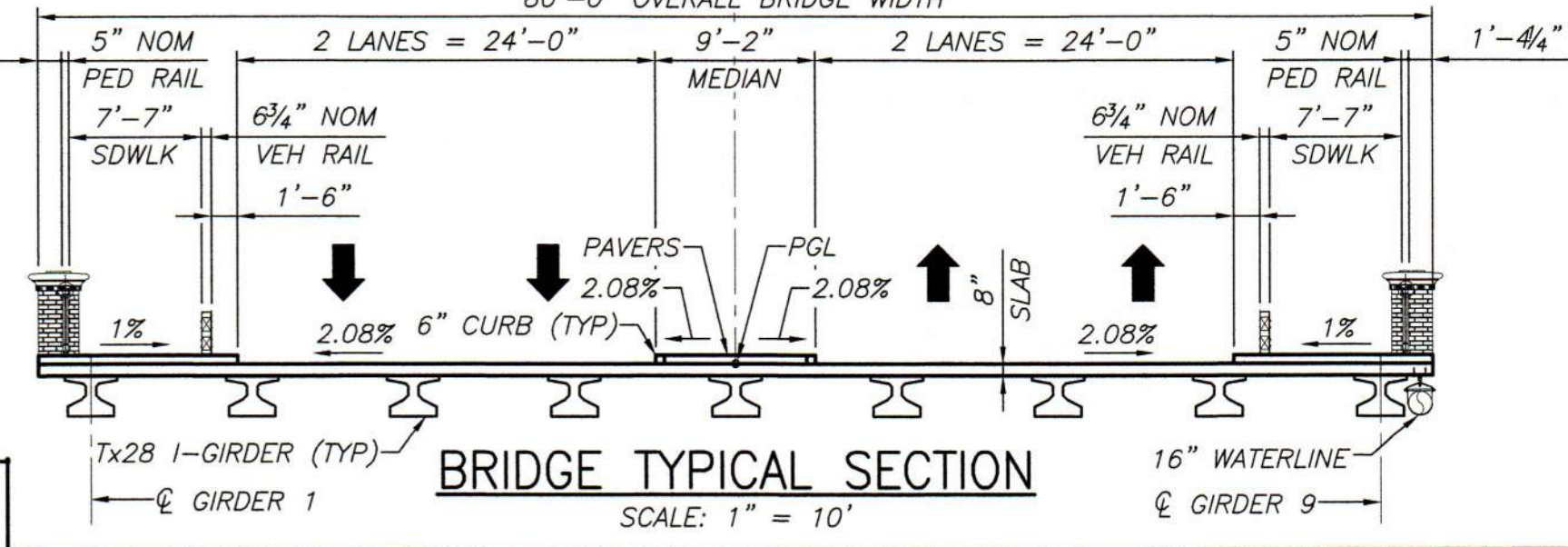
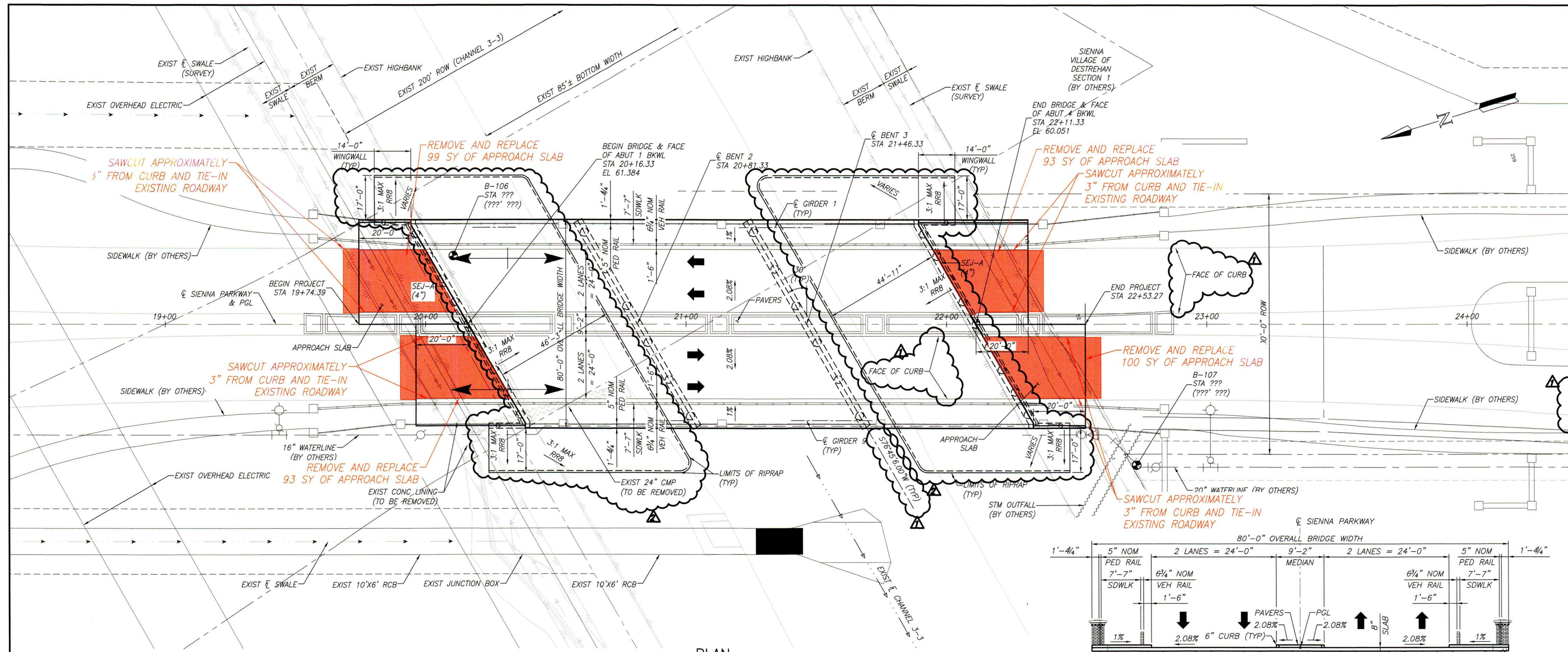
9/23/2024

APPROACH SLAB REPAIR
SIENNA PARKWAY BRIDGE OVER
CHANNEL 3-3

LJA Engineering, Inc.
1904 W. Grand Parkway N. Phone 713.953.5200
Suite 100 Fax 713.953.5026
Houston, Texas 77449 FRN - F-1386



Date: 23 Sep 2024 - 2:56pm User Name: rhorenberg
 Path Name: \\14151\14151-1402\Structural\ACAD_Sheet_Files\Approach Slab Repair\APPROACH SLAB REPAIR.dwg



BENCHMARK:
FND. 3- 1/2 INCH BRASS DISC LOCATED IN A Poured CONCRETE POST AT THE SOUTHWEST CORNER OF WATERS LAKE BLVD. AND THE EAST ENTRANCE TO THE RIDGE POINT HIGH SCHOOL IN SIENNA. 2.3 FEET SOUTH OF SIDEWALK. SURVEY MARKER NO. 11015 ELEVATION = 59.15 2001 ADJUSTMENT

- NOTES:**
- DESIGNED IN ACCORDANCE WITH AASHTO LRFD SPECIFICATIONS FOR HL93 LOADING.
 - CONTRACTOR SHALL VERIFY EXISTING UTILITIES BEFORE COMMENCING WORK.
 - ⊙ - DENOTES SOIL BORING LOCATION. SEE GEOTECHNICAL REPORT BY NINYO & MOORE, PROJECT NO. 700242006 FOR COMPLETE BORING LOG AND SITE CONDITION.
 - D - DENOTES DOWEL AT EXTERIOR BEAM ENDS. BLANK-DENOTES NO DOWEL.
 - REFER TO ARCHITECTURAL DRAWINGS FOR ALL ARCHITECTURAL FEATURES.
 - CONTRACTOR SHALL VERIFY ALL DIMENSIONS PRIOR TO CONSTRUCTION. DIMENSIONS NOT SHOWN ON STRUCTURAL DRAWINGS SHALL REFER TO ARCHITECTURAL DRAWINGS.
 - THE "H" VALUES SHOWN ARE ESTIMATED COLUMN HEIGHTS. CONTRACTOR IS RESPONSIBLE TO CALCULATE COLUMN HEIGHTS BASED ON FIELD CONDITIONS.
 - CONTRACTOR SHALL FIELD VERIFY TOP OF PAVEMENT ELEVATIONS FOR EXISTING PAVEMENT BEFORE COMMENCING WORK.
 - SEE SHEET 43 FOR GRADING LAYOUT & SWALE DETAILS.
 - DESIGN SPEED IS 45 MPH.

PAVING RECORD DRAWING
I HEREBY CERTIFY THAT THIS DRAWING REFLECTS THE IMPROVEMENTS CONSTRUCTED AS TO SIZE, LOCATION, AND GRADE; AND THAT THE CONSTRUCTION WAS IN SUBSTANTIAL COMPLIANCE WITH THE CONTRACT DOCUMENTS.

CONTRACTOR: _____ DATE: _____
TITLE: _____

WS&D RECORD DRAWING
I HEREBY CERTIFY THAT THIS DRAWING REFLECTS THE IMPROVEMENTS CONSTRUCTED AS TO SIZE, LOCATION, AND GRADE; AND THAT THE CONSTRUCTION WAS IN SUBSTANTIAL COMPLIANCE WITH THE CONTRACT DOCUMENTS.

CONTRACTOR: _____ DATE: _____
TITLE: _____

DATE	REVISION	BY
8-13-14	ADD DETAIL NOTES & ARCHITECTURAL DS NOTES	EM
10-2-14	EXPAND RIPRAP	SG

FORT BEND COUNTY ENGINEERING DEPARTMENT
APPROVAL IS IMPLIED FOR IMPROVEMENTS WITHIN FORT BEND COUNTY RIGHTS-OF-WAY ONLY. UTILITY LINES APPROVED AS TO LOCATION ONLY. AUTHORIZATION IS VALID FOR ONE YEAR ONLY.

APPROVED: _____
DEVELOPMENT COORDINATOR
DATE: _____



Robert D. Upton, P.E., CITY ENGINEER

SIENNA PLANTATION MUNICIPAL UTILITY DISTRICT NO. 5

SIENNA PARKWAY BRIDGE OVER CHANNEL 3-3

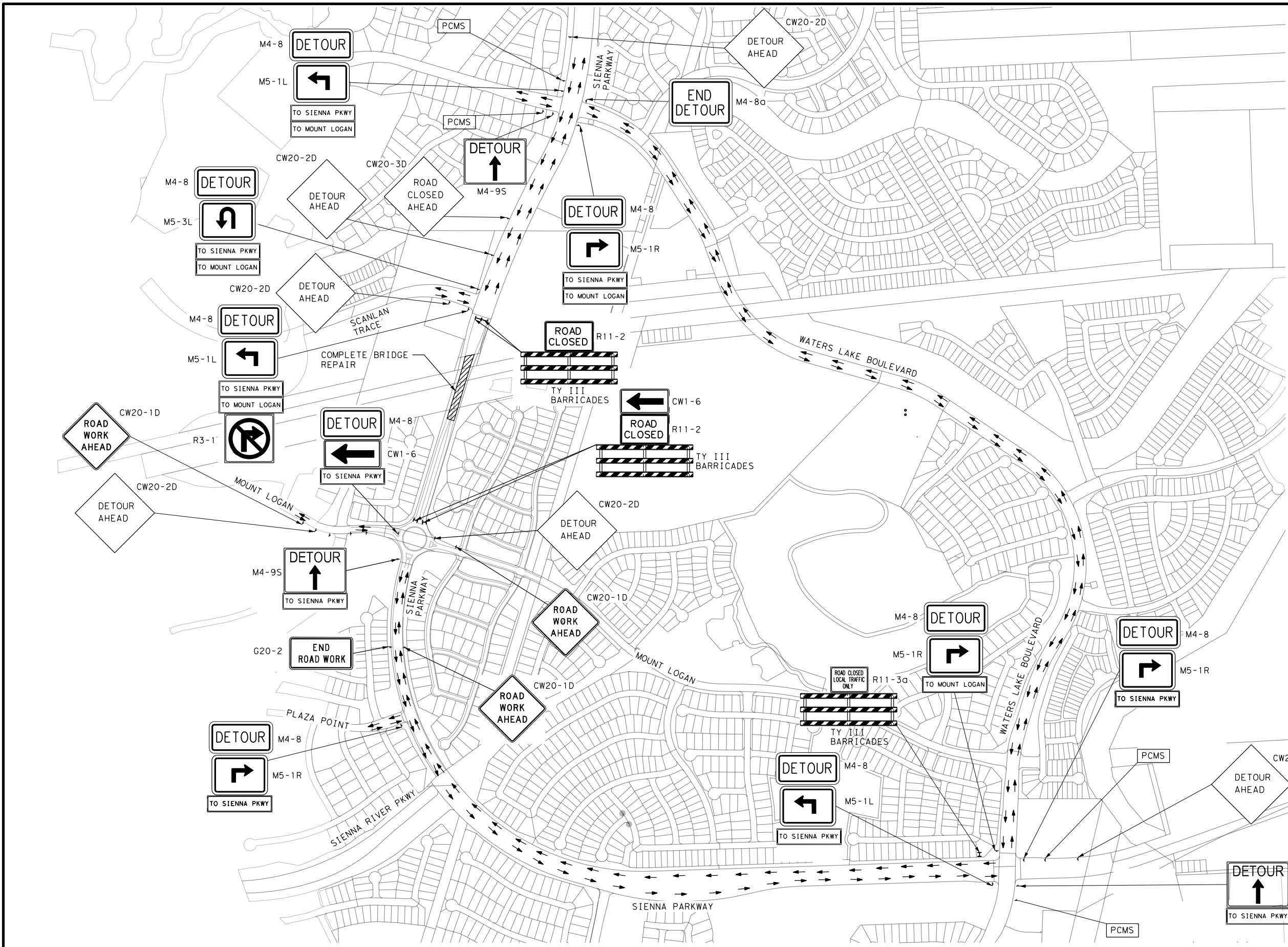
BRIDGE LAYOUT

LJA Engineering, Inc.
2929 Briarpark Drive Suite 600 Houston, Texas 77042
Phone 713.953.5200 Fax 713.953.5026 FRN - F-1386

LJA PROJECT NO.: 1415-1402
DRAWN: MS DESIGN: EM DATE: JUNE 2014
SCALE: AS NOTED
SHEET NO. 4 OF 4

Date/Time: Thu, 25 Jul 2014 15:15:11 GMT
Path: \\p01\projects\1415-1402\Structural\ACAD_Sheet_Files\6 BRIDGE LAYOUT.MP 7.24.24.dwg

SIENNA PARKWAY BRIDGE OVER CHANNEL 3-3 - JOB NO. 1415-1402



LEGEND

- WORK ZONE
- DETOUR ROUTE

NOTE:

1. CONTRACTOR SHALL FOLLOW APPLICABLE TCP STANDARDS FOR SIGN SPACING.
2. CONTRACTOR SHALL MAINTAIN ACCESS TO ADJACENT PROPERTIES AT ALL TIMES.
3. CONTRACTOR SHALL COVER ALL EXISTING SIGNS THAT CONFLICT WITH OR ARE NOT REQUIRED FOR THE TRAFFIC CONTROL PLAN. UNCOVER AS NEEDED OR AS DIRECTED BY THE ENGINEER IN SUBSEQUENT PHASES AND/OR STEPS.
4. CONTRACTOR SHALL UTILIZE HES CONCRETE PAVEMENT FOR REPAIRS.
5. CONTRACTOR SHALL MAINTAIN ACCESS TO MOUNT LOGAN WEST AT ALL TIMES.
6. PCMS TO BE INSTALLED 2 WEEKS PRIOR TO CLOSURE.
7. PCMS MESSAGE SHALL BE COORDINATED WITH ENGINEER.

0' 200' 400'
 (1"=400' HALF SIZE, 1"=200' FULL SIZE)

STATE OF TEXAS

* * * * *

JULIO A. RANGEL

117165

PROFESSIONAL ENGINEER

Julio A. Rangel

2/26/2025

NO.	REVISIONS	DATE	NAME

PROJECT TITLE: SIENNA VILLAGE OF DESTREHAM

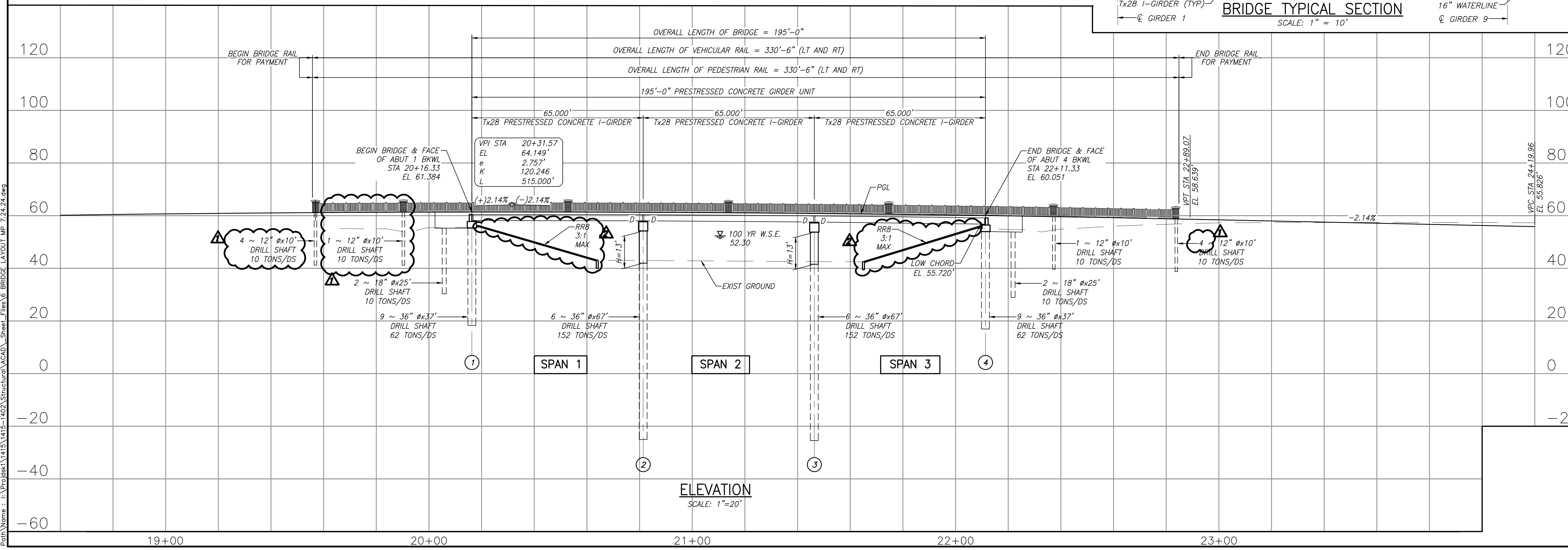
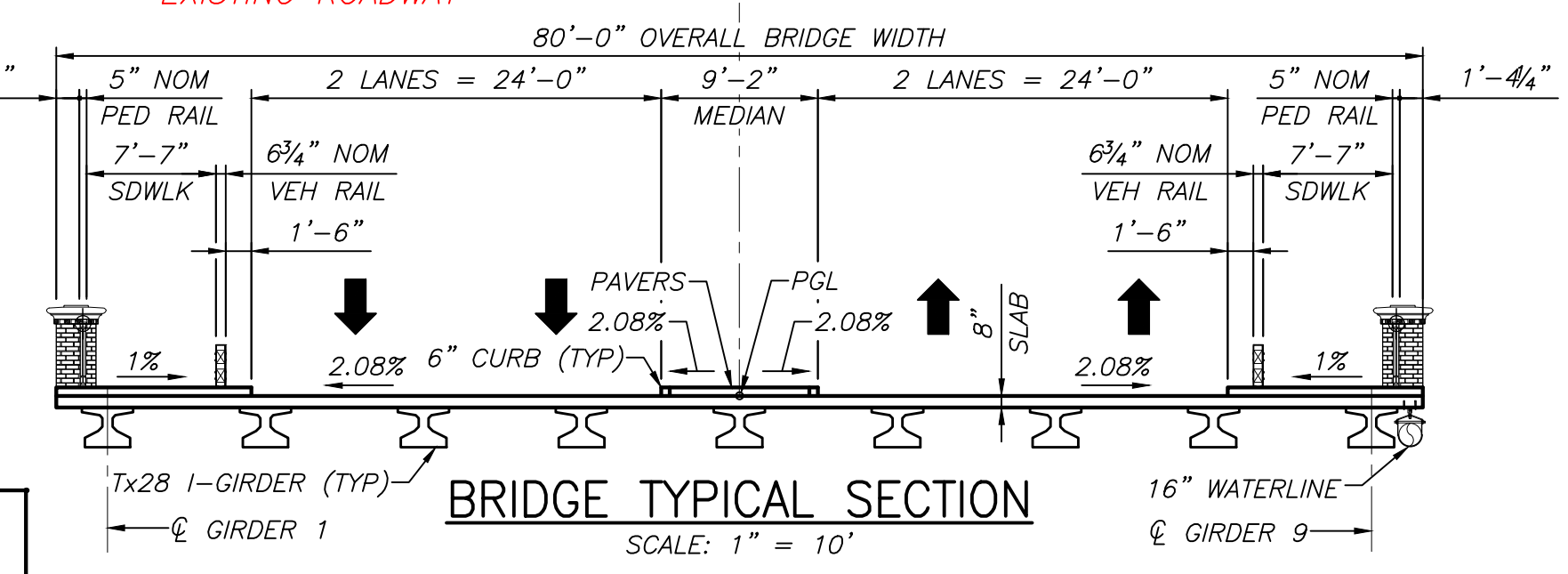
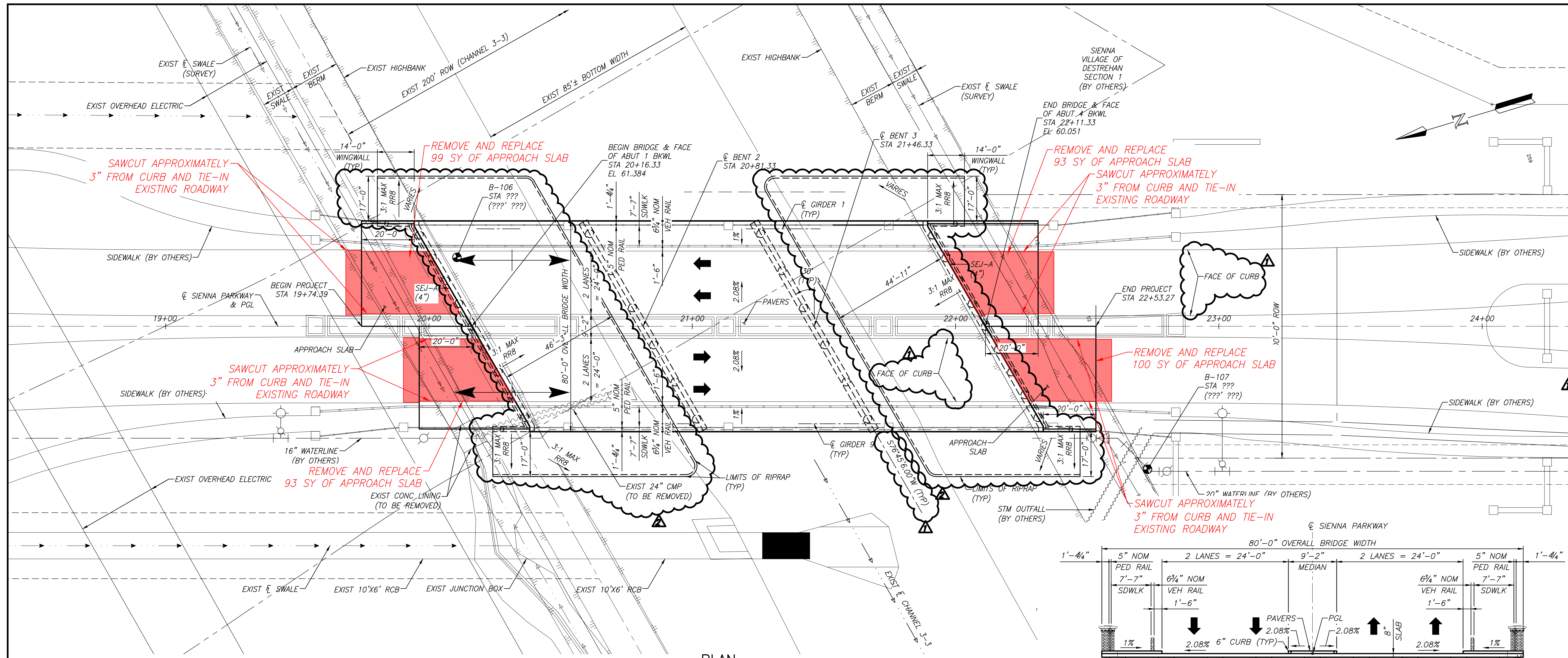
SHEET DESCRIPTION: TCP

BRIDGE REPAIR DETOUR PLAN

LJA Engineering, Inc.

FRN - F-1386

DRAWN BY: V. R.	JOB NO: 1414-0200
CHK'D BY: J. R.	FILE NO:
SCALE: 1" = 400'	FILE NO:
DATE: 02-26-25	APPROVED BY: JULIO RANGEL, P.E.
	SHT NO: 1 / 1



- BENCHMARK:**
- FND. 3- 1/2 INCH BRASS DISC LOCATED IN A Poured concrete post at the southwest corner of Waters Lake Blvd. and the east entrance to the Ridge Point High School in Sienna. 2.3 FEET SOUTH OF SIDEWALK. SURVEY MARKER NO. 11015 ELEVATION = 59.15 2001 ADJUSTMENT
- NOTES:**
- DESIGNED IN ACCORDANCE WITH AASHTO LRFD SPECIFICATIONS FOR HL93 LOADING.
 - CONTRACTOR SHALL VERIFY EXISTING UTILITIES BEFORE COMMENCING WORK.
 - ⊗ - DENOTES SOIL BORING LOCATION. SEE GEOTECHNICAL REPORT BY NINYO & MOORE PROJECT NO. 700242006 FOR COMPLETE BORING LOG AND SITE CONDITION.
 - D - DENOTES DOWEL AT EXTERIOR BEAM ENDS. BLANK-DENOTES NO DOWEL.
 - REFER TO ARCHITECTURAL DRAWINGS FOR ALL ARCHITECTURAL FEATURES.
 - CONTRACTOR SHALL VERIFY ALL DIMENSIONS PRIOR TO CONSTRUCTION. DIMENSIONS NOT SHOWN ON STRUCTURAL DRAWINGS SHALL REFER TO ARCHITECTURAL DRAWINGS.
 - THE "H" VALUES SHOWN ARE ESTIMATED COLUMN HEIGHTS. CONTRACTOR IS RESPONSIBLE TO CALCULATE COLUMN HEIGHTS BASED ON FIELD CONDITIONS.
 - CONTRACTOR SHALL FIELD VERIFY TOP OF PAVEMENT ELEVATIONS FOR EXISTING PAVEMENT BEFORE COMMENCING WORK.
 - SEE SHEET 43 FOR GRADING LAYOUT & SWALE DETAILS.
 - DESIGN SPEED IS 45 MPH.

PAVING RECORD DRAWING

I HEREBY CERTIFY THAT THIS DRAWING REFLECTS THE IMPROVEMENTS CONSTRUCTED AS TO SIZE, LOCATION, AND GRADE; AND THAT THE CONSTRUCTION WAS IN SUBSTANTIAL COMPLIANCE WITH THE CONTRACT DOCUMENTS.

CONTRACTOR: _____ DATE: _____

TITLE: _____

WS&D RECORD DRAWING

I HEREBY CERTIFY THAT THIS DRAWING REFLECTS THE IMPROVEMENTS CONSTRUCTED AS TO SIZE, LOCATION, AND GRADE; AND THAT THE CONSTRUCTION WAS IN SUBSTANTIAL COMPLIANCE WITH THE CONTRACT DOCUMENTS.

CONTRACTOR: _____ DATE: _____

TITLE: _____

DATE	REVISION	BY
8-13-14	ADD DETAIL NOTES & ARCHITECTURAL DS NOTES	EM
10-2-14	EXPAND RIPRAP	SG

FORT BEND COUNTY ENGINEERING DEPARTMENT

APPROVAL IS IMPLIED FOR IMPROVEMENTS WITHIN FORT BEND COUNTY RIGHTS-OF-WAY ONLY. UTILITY LINES APPROVED AS TO LOCATION ONLY. AUTHORIZATION IS VALID FOR ONE YEAR ONLY.

APPROVED: _____
DEVELOPMENT COORDINATOR

DATE: _____



Robert D. Upton, P.E., CITY ENGINEER

SIENNA PLANTATION MUNICIPAL UTILITY DISTRICT NO. 5

SIENNA PARKWAY BRIDGE OVER CHANNEL 3-3

BRIDGE LAYOUT

LJA Engineering, Inc.
2929 Briarpark Drive Phone 713.953.5200
Suite 600 Fax 713.953.5026
Houston, Texas 77042 FRN - F-1386

LJA PROJECT NO.: 1415-1402

DRAWN: MS DESIGN: EM DATE: JUNE 2014

SCALE: AS NOTED

SHEET NO. 6 OF 57

Date: Thu, 25 Jul 2014 4:18pm
Path Name: I:\Projects\1415-1402\Structural\ACAD_Sheet\Files\6 BRIDGE LAYOUT.MP.7.24.24.dwg

SIENNA PARKWAY BRIDGE OVER CHANNEL 3-3 - JOB NO. 1415-1402