



Fort Bend County Engineering
FORT BEND COUNTY, TEXAS

J. Stacy Slawinski, P.E.
County Engineer

January 10, 2025

Commissioner Vincent M. Morales, Jr.
Fort Bend County Precinct 1
1517 Eugene Heimann Circle
Richmond, TX 77469

RE: Adjustment to County Road Log - Pitts Road – North of Highway 90A

Dear Commissioner,

The Fort Bend County Engineering Department is requesting an adjustment to the county road log for Pitts Road, between State Highway 90A and Plantation Drive. The portion of Pitts Road proposed to be removed from the road log has been annexed into the City of Richmond.

MODIFIED MAINTENANCE

Pitts Road 1,363.9LF (0.26 miles from Railroad tracks at Hwy 90A)

The remaining portion of Pitts Road between Hwy 90A and Plantation Drive will remain in county maintenance. If you have any questions or concerns, please contact me at 281-633-7516 or you may email me at Courtney.velasquez@fbctx.gov.

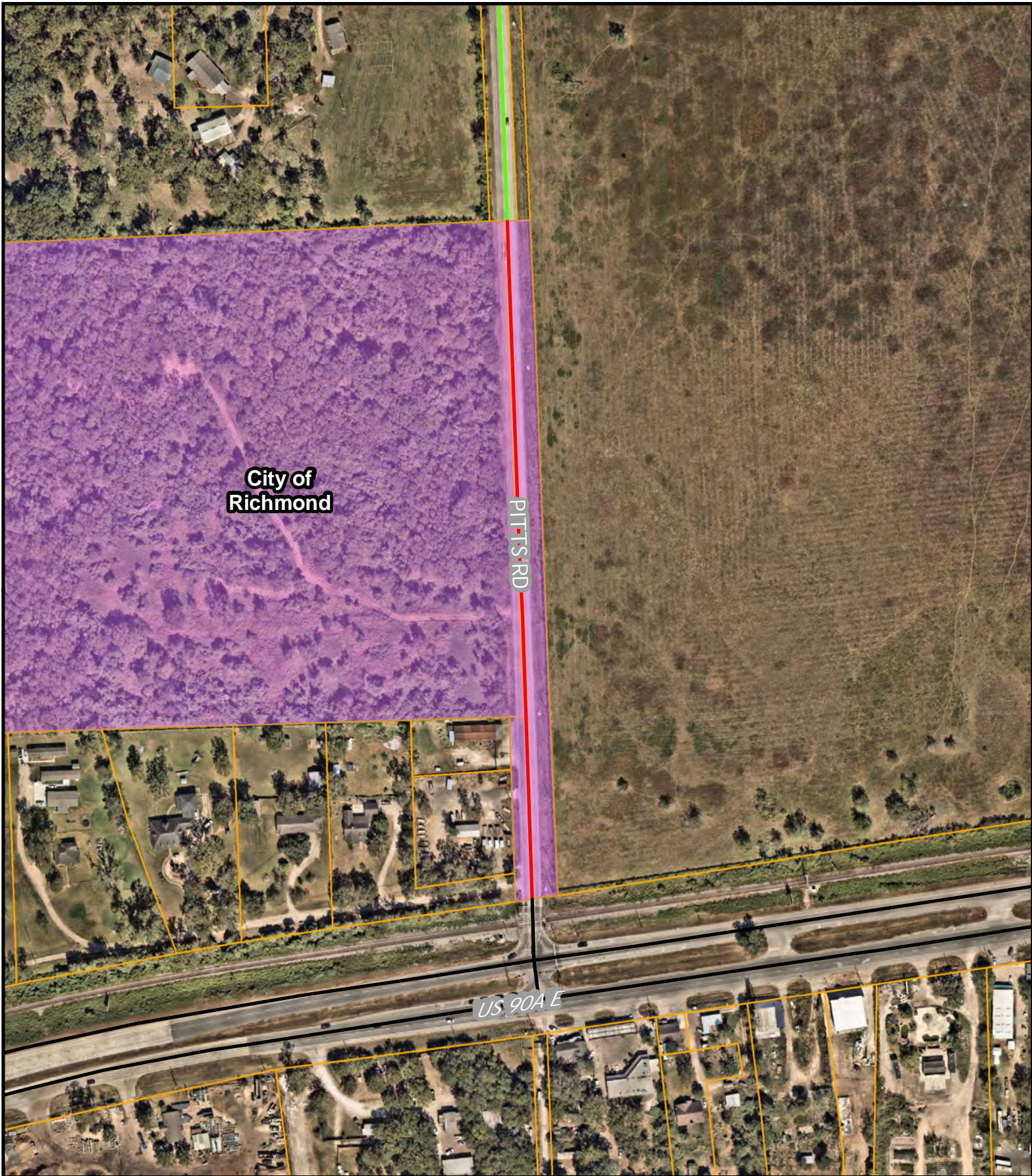
Sincerely,

A handwritten signature in blue ink that reads "Courtney Velasquez".

Courtney Velasquez
Sr. Development Admin Assistant
Fort Bend County Engineering

CC: Mr. Scott Wiegat, FBC Road & Bridge
Mr. Keli Smith, FBC Road & Bridge

301 Jackson St., Suite 401 | Richmond, TX 77469
Phone 281-633-7500








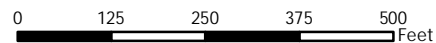
County Road Log Update for Pitts Rd



Plan by: Engineering GIS
Date: 1/10/2025

Legend

- | | | | |
|---|----------------------|---|----------------------|
|  | Removed Portion |  | FBC Maintained Roads |
|  | Richmond City Limits |  | Yes |
| | |  | No |



LEGAL DISCLAIMER
This Geographic Information Systems (GIS) Data is a public resource of general information. The information contained was generated from GIS data maintained by Fort Bend County and different sources and agencies. The County of Fort Bend makes no warranty, representation, or guarantee as to the content sequence, accuracy, timeliness, or completeness of any of the spatial data or database information provided herein. The County of Fort Bend shall assume no liability for any errors, omissions, or inaccuracies in the information provided, regardless of how caused; or any decision made or action taken or not taken by any person relying on any information or data furnished within. If any errors are detected, please contact the GIS Division of Fort Bend County Engineering so those errors may be corrected.