



\$293,760.00 under the Agreement;  
\$ 0.00 under the First Amendment; and  
\$188,500.00 under this Second Amendment.

4. **Recitals.** The recitals set forth above are incorporated herein by reference and made a part of the Agreement.
5. **Human Trafficking.** BY ACCEPTANCE OF THIS SECOND AGREEMENT, CONSULTANT ACKNOWLEDGES THAT FORT BEND COUNTY IS OPPOSED TO HUMAN TRAFFICKING AND THAT NO DISTRICT FUNDS WILL BE USED IN SUPPORT OF SERVICES OR ACTIVITIES THAT VIOLATE HUMAN TRAFFICKING LAWS.
6. **Modifications and Conflict.** Except as modified herein, the Agreement shall remain in full force and effect and has not been otherwise modified or amended. If there is a conflict among documents that make up the Agreement, this Second Amendment shall prevail with regard to the conflict.

**FORT BEND COUNTY DRAINAGE DISTRICT**

**HUITT-ZOLLARS, INC.**

\_\_\_\_\_  
KP George, County Judge

\_\_\_\_\_  
Authorized Agent – Signature

\_\_\_\_\_  
Date

\_\_\_\_\_  
Michael Tehrani, P.E., CFM, PMP

\_\_\_\_\_  
Authorized Agent- Printed Name

ATTEST:

\_\_\_\_\_  
Vice President

\_\_\_\_\_  
Title

\_\_\_\_\_  
Laura Richard, County Clerk

\_\_\_\_\_  
11/25/2025

\_\_\_\_\_  
Date

**APPROVED:**

\_\_\_\_\_  
*Mark Vogler*

\_\_\_\_\_  
Mark Vogler, P.E., Chief Engineer

i:\agreements\2026 agreements\drainage district\huitt-zollars, inc. (25-drng-100285-a2)\second amendment to agreement for professional engineering services -- huitt-zollars, inc..docx (DRP 11.05.25)

# **EXHIBIT A-2**

(Proposal Follows Behind)



June 16, 2025

Mr. Mark Vogler, PE  
General Manager and Chief Engineer  
Fort Bend County Drainage District  
1124 Blume Road  
Richmond, Texas 77471

Reference: Drainage Masterplan for the west of City of Rosenberg South of US 90

Dear Mr. Vogler:

Huitt-Zollars, Inc. (Huitt-Zollars) appreciates the opportunity to provide this proposal for professional and engineering services to Fort Bend County Drainage District (County) for a Drainage Masterplan for 13.0 square-mile of area west of the City of Rosenberg south of US 90 as shown in attached Exhibit A (Project). This work is an addition to the Drainage Masterplan that covers the area north of US 90.

Our proposal is based upon the following project understanding, scope of services, compensation, schedule, attachments, and the county standard agreement for professional engineering services.

**PROJECT UNDERSTANDING**

Fort Bend County Drainage District wants to identify the drainage improvement requirements and opportunities associated with future developments west of the City of Rosenberg with an emphasis on promoting commercial and industrial developments in the area. As this future development progresses and impervious surfaces are introduced, the need for mitigation storage becomes imperative. In collaboration with the County, Huitt-Zollars will develop a drainage master plan tailored to this prospective expansion. The limits of this drainage masterplan include Cottonwood Creek, Coon Creek, Seabourne Creek between US90 and I69 as shown in attached Exhibit A.

This plan includes an assessment of the current drainage system and will highlight the existing deficiencies. The plan will focus on improving the existing channels and providing regional detention to effectively manage stormwater as the development unfolds.

The proposed improvements will also identify the options for improving drainage in Coon Creek, Cottonwood Creek and Seabourne Creek by diverting flow to the north for areas north of I69. The drainage masterplan will include channel improvement

Huitt-Zollars will actively coordinate with Union Pacific Railroad Company and the Moore Family to integrate development assumptions for the properties they own within the project area. This collaboration will ensure that the drainage solutions align with their future development plans.

## **SCOPE OF SERVICES**

---

### **1.0 Basic Services**

Conduct kickoff meeting at County Office. Conduct bimonthly meetings with county updating concerned parties on progress of the plan.

### **1.1 Data Collection**

- a) Conduct site visits and discuss the County's vision for future development projects.
- b) Examine available survey, as-built and Record Drawing plan sets
- c) Obtain available shapefile, utility drawings and shapefile (Water, Sanitary & storm sewer, etc.)
- d) Obtain FEMA Effective models, if applicable. Obtain other available models previously submitted to the County.
- e) Coordinate with the Union Pacific Railroad Company, Moores Family, City of Rosenberg and TxDOT for future development assumptions and potential drainage improvements.

### **1.2 Survey**

- a) Huitt-Zollars shall perform a survey task to collect 23 drainage crossings information. The survey task includes the following:
  - i. Provide details of 16 existing bridge structures, including bridge limits, bents, low- & high-chord elevation, limits of guardrail and elevation, pier & abutment locations, channel flowline, and high-water mark elevations at upstream and downstream faces of the structures, highest roadway elevation at the crossing.
  - ii. Provide details of 7 existing culvert structures, including headwall limits and elevation, pipe flowlines, size, material, length, channel flowline, and high-water mark elevations at upstream and downstream faces of the structures, highest roadway elevation at the crossing.

### **1.3 Existing Condition Analysis**

- a) Develop a hydrologic model of the existing conditions for use in the hydraulic analysis.
- b) Delineate drainage areas based on the best available data and review the hydrologic parameters
- c) Develop hydrographs in the HEC-HMS utilizing Atlas 14 rainfall data. Peak flows will be determined using appropriate hydrologic methods. Hydrographs shall be developed for the 2-year, 10-year, 50-year and 100-year storm events.
- d) Develop an existing condition 1-dimensional hydraulic model of the site using HEC-RAS to determine the level of service in the existing drainage network. The latest Lidar data, survey and as-built information will be utilized to build the geometry of the hydraulic base model.
- e) The extent of the hydraulic modeling effort is limited to Coon Creek, Cottonwood Creek and Seabourne Creek. The modeling effort is limited to the area north of I69.
- f) Simulate the 2-year, 10-year, 50-year and 100-year storm events.
- g) Conduct a review meeting with the County to discuss the drainage investigation findings. The Engineer shall prepare meeting minutes and submit them to the County within five working days.

### **1.4 Proposed Drainage Improvement Analysis**

- a) Identify future developments west of City of Rosenberg with an emphasis on promoting commercial and industrial developments in the area. Coordinate with the Railroad and Moores Family for future development assumptions on their property.
- b) Adjust the existing conditions hydraulic model to include the proposed improvements. The proposed drainage improvements will be channel improvement, inline detention and regional detention ponds, if practical.

- c) Develop an alternative option for improving drainage in Coon Creek, Cottonwood Creek and Seabourne Creek by diverting flow to the north for areas north of I69.
- d) Conduct a Conceptual Improvements Review Meeting to present conceptual improvement alternatives to the County. Discuss the presented alternatives and select the most appropriate improvements with which to include in the final deliverables. Prepare meeting minutes and submit it to the County within five working days.

#### **1.5 Public and Private Utility Requirements**

- a) Identify water, sanitary sewer, gas, electricity & Telecommunication requirements, providers and opportunities in the area to serve future developments.
- b) Conduct a Conceptual Improvements Review Meeting to present the conceptual improvement options to the County. Prepare meeting minutes and submit it to the County within five working days.

#### **1.6 Final Deliverable**

- a) A Drainage Masterplan Report shall be developed as the deliverable for presenting the findings of the existing conditions and proposed conceptual improvements. The report will include exhibits, documented assumptions, and Hydrologic and Hydraulic models.
- b) Address one set of comments following the County review
- c) Conduct one in-person meeting with Fort Bend County Drainage District staff to discuss the final deliverable.

#### **2.0 Additional Services**

Because the effort required for some items of work varies considerably from project to project, and because some items of work are sometimes provided separately by the County, these items of work are not included in the basic services fees and are charged separately. Additional Services, mutually agreed upon and authorized separately by the County in writing, shall be completed on a lump sum or an hourly basis in accordance with the attached Hourly Rate Sheet. Such additional services may include:

- 2.1 Develop more refined XPSWMM 2D models to more accurately identify existing drainage issues and evaluate the potential improvement
- 2.2 Subsurface Utility Engineering (SUE) /Platting
- 2.3 Traffic Impact Analysis (TIA)
- 2.4 Landscape Architecture
- 2.5 Testing and Balancing/Building Commissioning
- 2.6 Environmental Investigation
- 2.7 Geotechnical Investigation
- 2.8 Bid Phase Services
- 2.9 Construction Phase Services

#### **3.0 Client-Provided Services**

Fort Bend County Drainage District shall provide the following services or documents as part of this project:

- 3.1 Provide available drainage studies and models
- 3.2 Provide available record drawings for existing channels
- 3.3 Provide available GIS files pertinent to the project limits



**COMPENSATION**

---

**1.0 Total Estimated Budget**

Our estimated hourly not-to-exceed fee to include expenses for the Basic Services is \$188,500.

**2.0 Invoicing**

Invoices will be submitted monthly. Hourly tasks shall be invoiced based on the number of hours worked by discipline and reimbursable expenses shall be compensated per the attached Hourly Rate Sheet.

**SCHEDULE**

---

The basic services above shall be completed within 25 weeks from receipt of written notice to proceed from the County.

**AUTHORIZATION**

---

Should this proposal meet with your approval, please return a County Agreement for our execution. We will schedule the services above as soon as we receive your written authorization. If you have any questions, please call me at 832.276.5451.

Sincerely,  
**HUITT-ZOLLARS, INC.**

A handwritten signature in blue ink, appearing to read 'M. Tehrani'.

Michael Tehrani, PE, CFM, PMP  
Vice President

Enclosure



**Houston  
2025**

**HOURLY RATE SHEET**

**Engineering/Architecture**

Principal	\$ 325.00
Design Principal	\$ 325.00
Sr. Project Manager	\$ 315.00
QA Manager	\$ 300.00
Project Manager	\$ 245.00
Sr. Civil Engineer	\$ 260.00
Sr. Structural Engineer	\$ 270.00
Sr. Mechanical Engineer	\$ 250.00
Sr. Electrical Engineer	\$ 250.00
Civil Engineer	\$ 200.00
Structural Engineer	\$ 200.00
Mechanical Engineer	\$ 200.00
Electrical Engineer	\$ 200.00
Plumbing Engineer	\$ 200.00
Engineer Intern	\$ 155.00
Sr. Architect	\$ 250.00
Sr. NL Architectural Staff	\$ 180.00
Architect	\$ 200.00
Architect Intern 1	\$ 110.00
Architect Intern 2	\$ 125.00
Architect Intern 3	\$ 155.00
NL Architectural Staff	\$ 150.00
Sr. Landscape Architect	\$ 195.00
Landscape Architect	\$ 155.00
Landscape Architect Intern	\$ 115.00
Sr. Planner	\$ 315.00
Planner	\$ 165.00
Planner Intern	\$ 130.00
Sr. Designer	\$ 175.00
Designer	\$ 140.00
Sr. CADD Technician	\$ 160.00
CADD Technician	\$ 110.00

**Interior Design**

Sr. Interior Designer	\$ 160.00
Interior Designer	\$ 125.00
Interior Designer Intern	\$ 100.00

**Survey**

Survey Manager	\$ 240.00
Sr. Project Surveyor	\$ 200.00
Project Surveyor	\$ 150.00
Sr. Survey Technician	\$ 130.00
Survey Technician	\$ 120.00

**Survey Crews**

1-Person Survey Crew	\$ 150.00
2-Person Survey Crew	\$ 190.00
3-Person Survey Crew	\$ 240.00

**Construction**

Sr. Construction Manager	\$ 220.00
Construction Manager	\$ 195.00
Resident Engineer	\$ 185.00
Sr. Project Representative	\$ 200.00
Resident Project Representative	\$ 140.00

**Administrative**

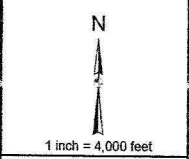
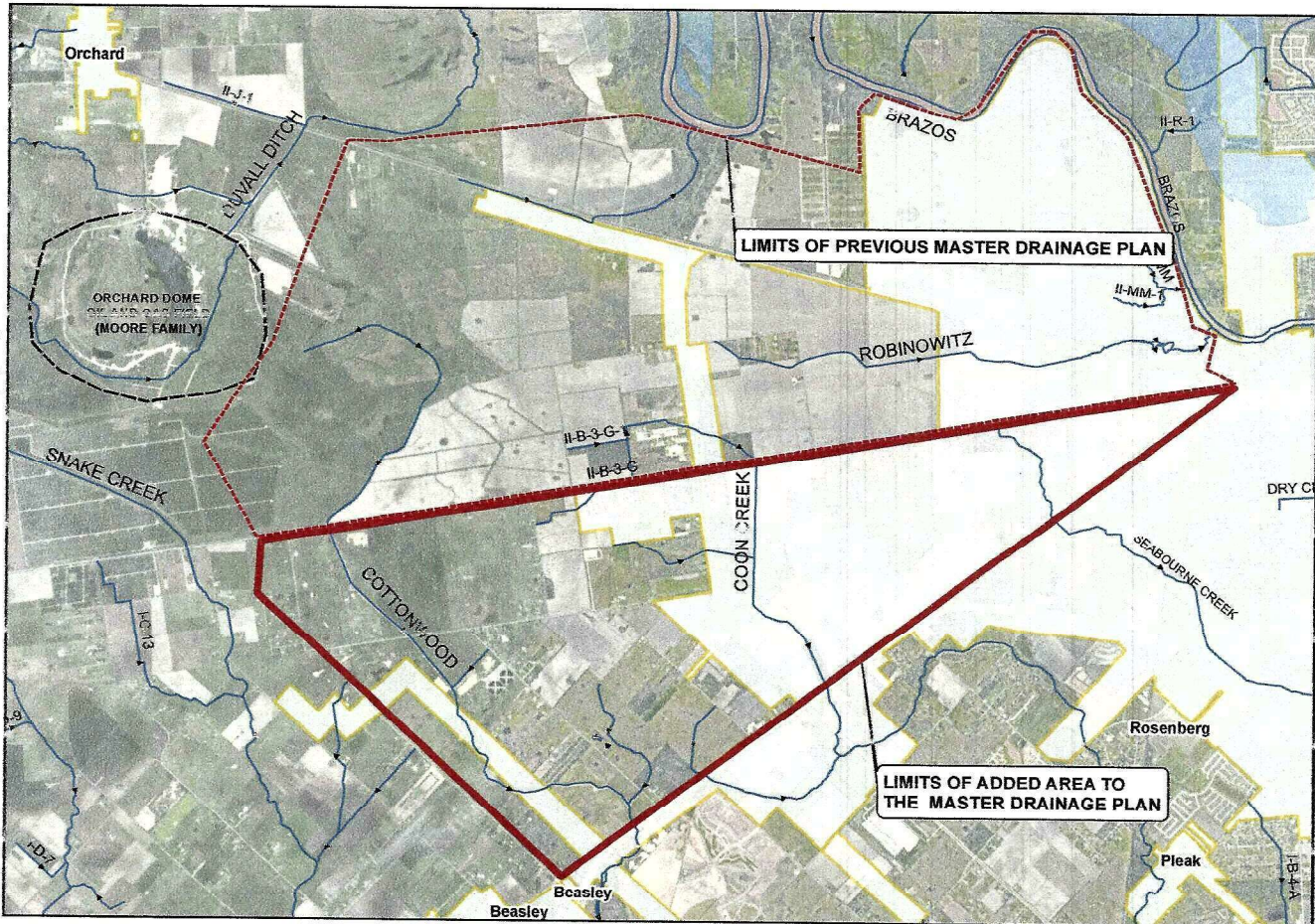
Sr. Project Support	\$ 115.00
Project Support	\$ 100.00

**Reimbursable Expenses**

Consultants	Cost + 10%
Other Direct Costs	Cost + 10%
Mileage	IRS Standard Business Mileage Rate

\*\*Subject to Annual Escalation

Document Path: c:\location Office Files\Proposals\2021\Fort Bend County\Drainage M...ar\Plan\Documents\GIS\Layers\_Moore\_parc...d



HUITT-ZOLLARS 10500 RICHMOND AVE, SUITE 300 HOUSTON, TEXAS 77044 800-975-4980 FAX 281-498-7048			
FORT BEND COUNTY EXHIBIT A			
STATE	COUNTY	DISTRICT	Exhibit 1
CONTROL	SECTION	JOB	