

PLAT RECORDING SHEET

PLAT NAME: Sienna Section 54

PLAT NO: _____

ACREAGE: 23.233

LEAGUE: William Hall Survey

ABSTRACT NUMBER: 31

NUMBER OF BLOCKS: 6

NUMBER OF LOTS: 81

NUMBER OF RESERVES: 12

OWNERS: Toll-GTIS Property Owner, LLC and Sienna Parks & Levee Improvement District

(DEPUTY CLERK)

MATCH LINE - SEE SHEET 3 OF 3

SIENNA SECTION 32A/B
PLAT NO. 20210016,
F.B.C.P.R.

SIENNA SECTION 42
PLAT NO. 20210078
F.B.C.P.R.

SIENNA SECTION 43
PLAT NO. 20220006
F.B.C.P.R.

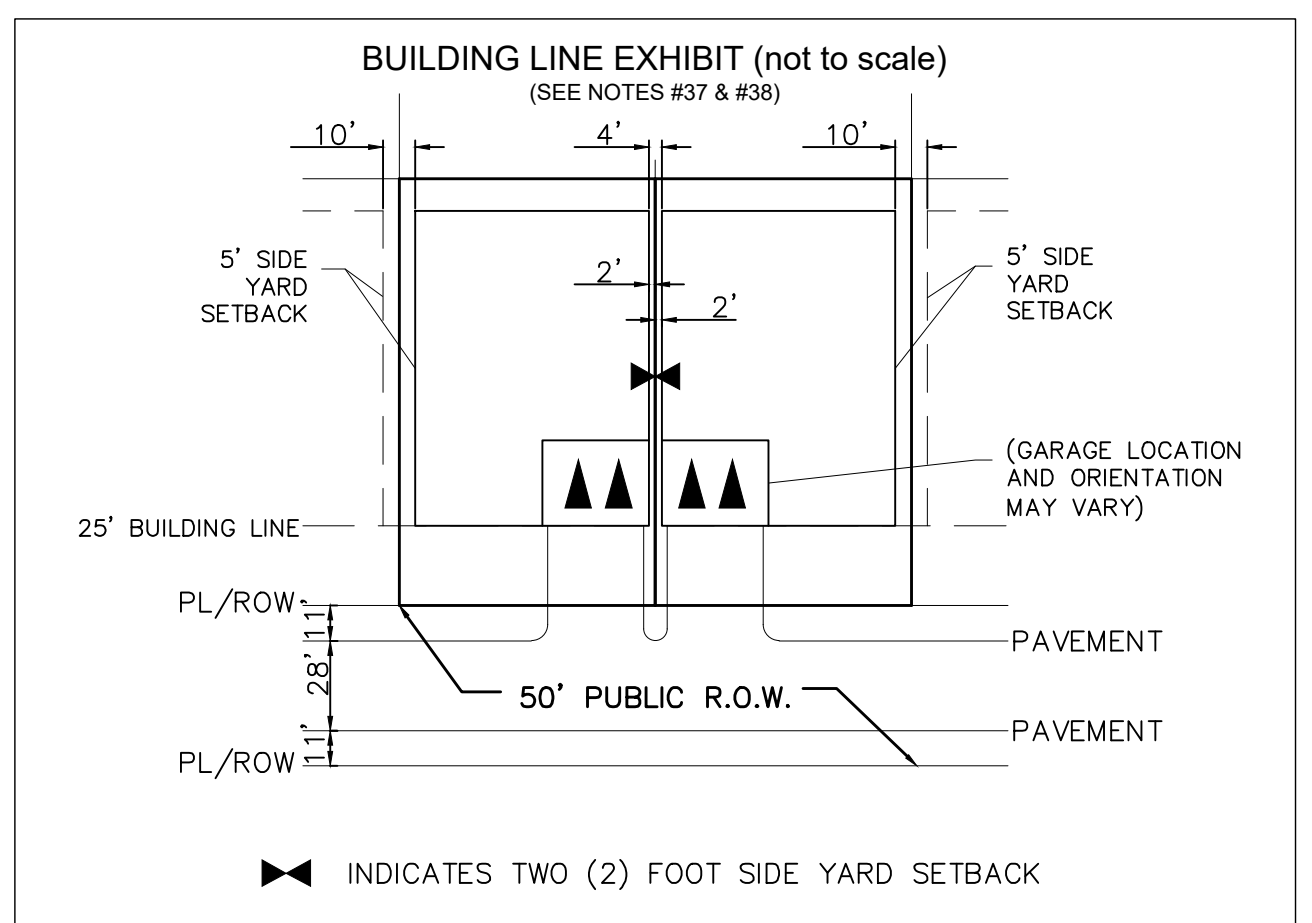
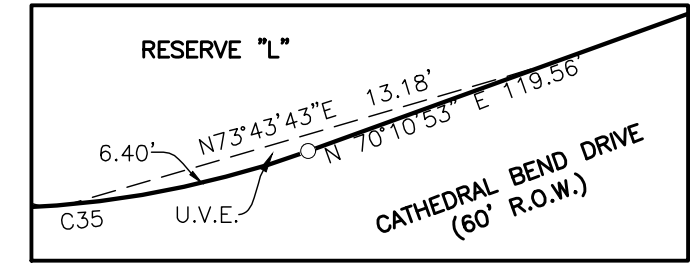
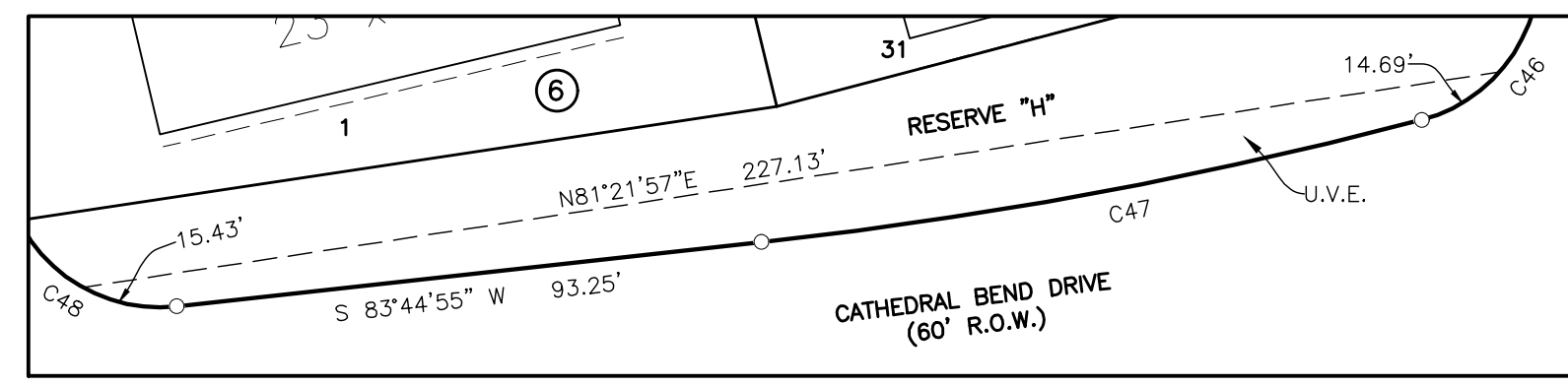
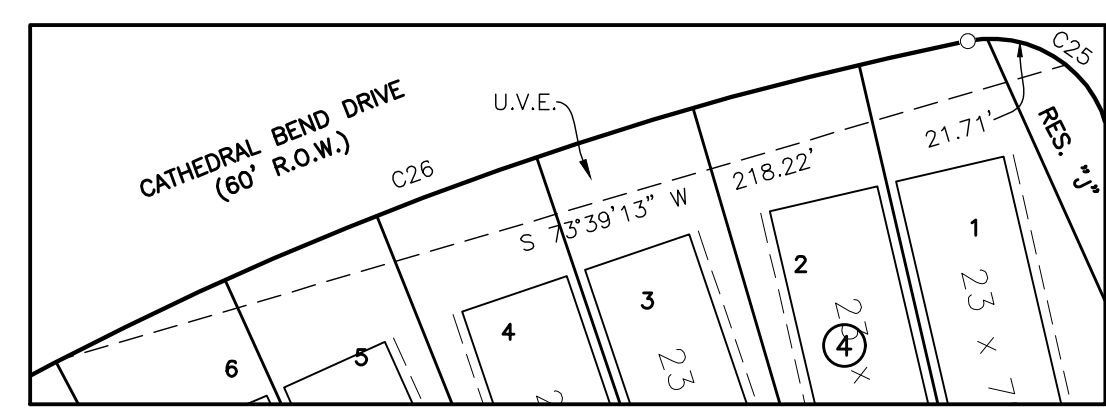
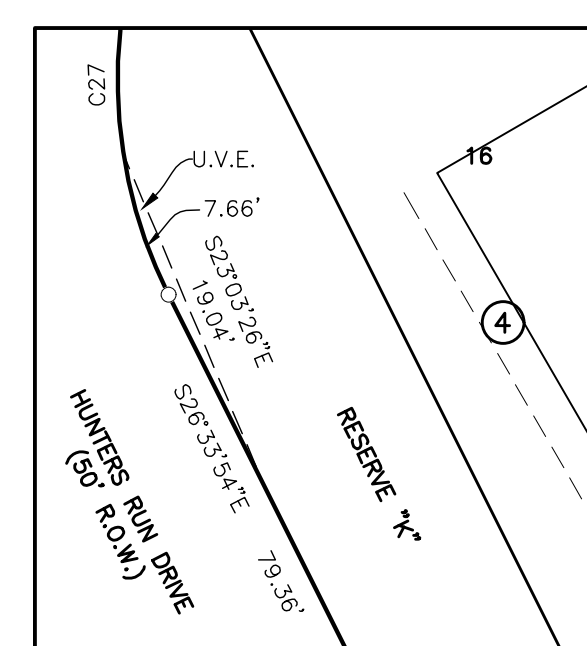
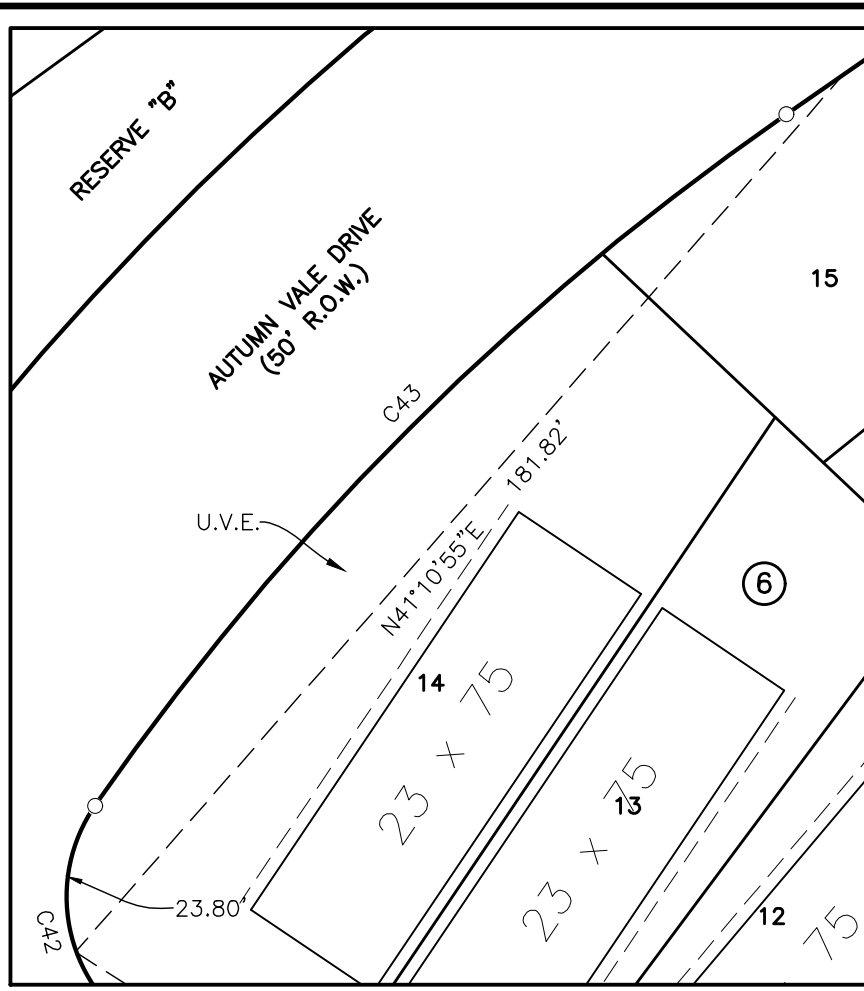
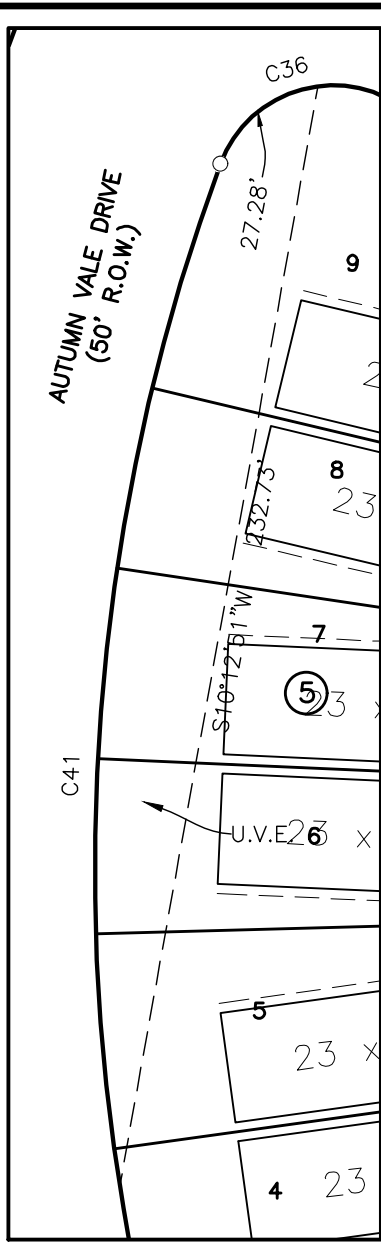
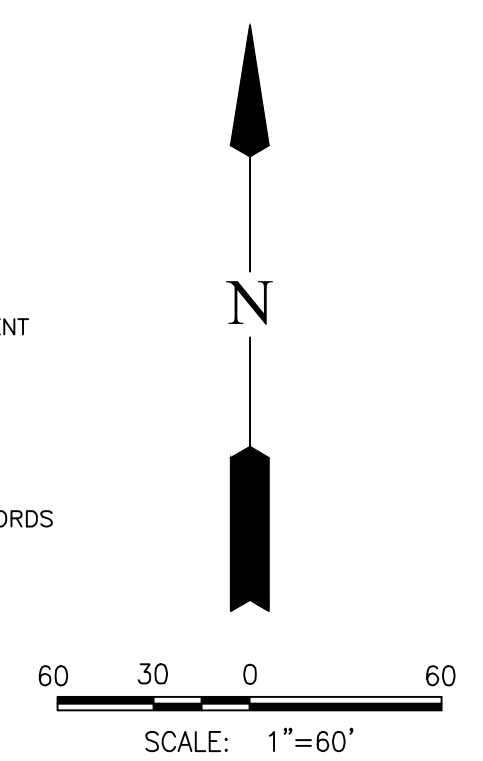
SIENNA SECTION 65
PLAT NO. 20240017
F.B.C.P.R.

TOLL-GTIS
PROPERTY OWNER LLC
CALLED 2808.323 ACRES
FILE NO. 2013153798
F.B.C.O.P.R.

TOLL-GTIS
PROPERTY OWNER LLC
CALLED 2808.323 ACRES
FILE NO. 2013153798
F.B.C.O.P.R.

LEGEND

- B.L. INDICATES BUILDING LINE
- U.E. INDICATES UTILITY EASEMENT
- D.E. INDICATES DRAINAGE EASEMENT
- W.L.E. INDICATES WATER LINE EASEMENT
- S.S.E. INDICATES SANITARY SEWER EASEMENT
- STM.S.E. INDICATES STORM SEWER EASEMENT
- A.E. INDICATES AERIAL EASEMENT
- V.A.M. INDICATES VISIBILITY ACCESS & MAINTENANCE EASEMENT
- E.E. INDICATES ELECTRICAL EASEMENT
- U.V.E. INDICATES UNOBSTRUCTED VISIBILITY EASEMENT
- F.B.C.P.R. INDICATES FORT BEND COUNTY PLAT RECORDS
- F.B.C.O.R. INDICATES FORT BEND COUNTY OFFICIAL RECORDS
- F.B.C.O.P.R. INDICATES FORT BEND COUNTY OFFICIAL PUBLIC RECORDS
- F.B.C.D.R. INDICATES FORT BEND COUNTY DEED RECORDS
- F.N. INDICATES FILE NUMBER
- VOL. INDICATES VOLUME
- PG. INDICATES PAGE
- RES. INDICATES RESERVE
- R.O.W. INDICATES RIGHT-OF-WAY
- INDICATES STREET NAME CHANGE
- INDICATES TWO (2) FOOT SIDE YARD SETBACK



SIENNA SECTION 54
A SUBDIVISION OF 23,233 ACRES OF LAND SITUATED IN THE
WILLIAM HALL SURVEY, ABSTRACT 31, FORT BEND COUNTY, TEXAS.

81 LOTS 12 RESERVES (11.126 ACRES) 6 BLOCKS
SEPTEMBER 18, 2024 JOB NO. 1416-1554P

OWNERS:
TOLL-GTIS PROPERTY OWNER, LLC
JIMMIE F. JENKINS, AUTHORIZED REPRESENTATIVE
10110 WEST SAM HOUSTON PARKWAY NORTH, SUITE 210, HOUSTON, TEXAS 77064
PH: (281) 894-8655
SIENNA PARKS & LEVEE IMPROVEMENT DISTRICT
OF FORT BEND COUNTY, TEXAS
TEMIKA B. JONES, PRESIDENT
202 CENTURY SQUARE BLVD, SUGAR LAND, TEXAS 77478-3796
PH: (281) 500-6050

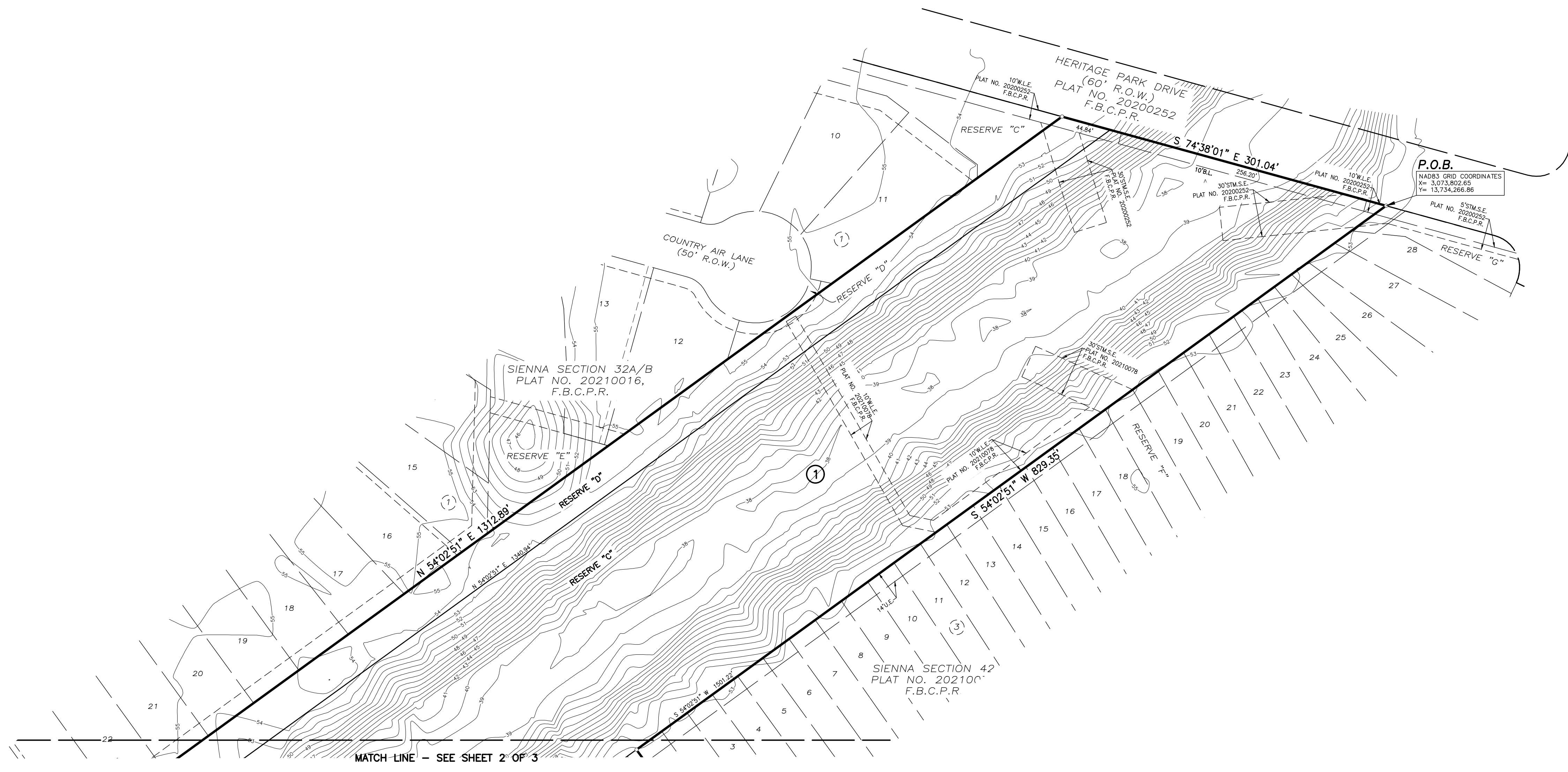
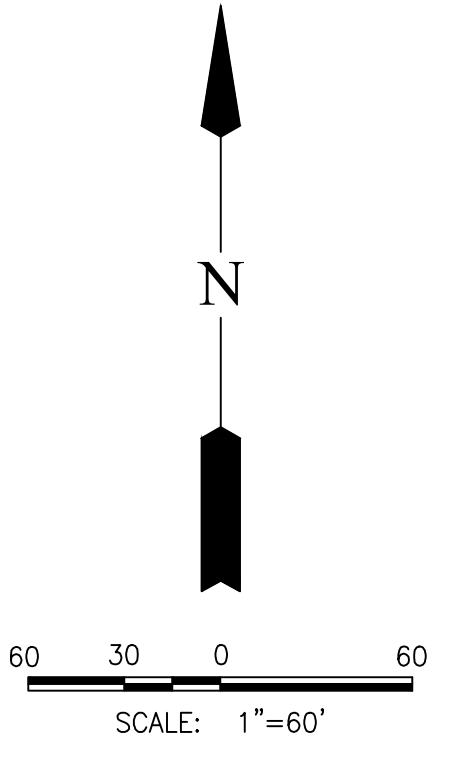
GBI PARTNERS
4724 VISTA ROAD 18PELS FIRM #10130300
PASADENA, TX 77505 GBSurvey@GBISurvey.com
PHONE: 281-499-4539 www.GBISurvey.com

LJA Engineering, Inc.
1904 W. Grand Parkway North
Suite 100 Phone 713.953.5200
Katy, Texas 77449 Fax 713.953.5026
FRN-F-1386

SURVEYOR: **JON P. BORDOVSKY, R.P.L.S.**
REGISTERED PROFESSIONAL LAND SURVEYOR
TEXAS REGISTRATION NO. 6405

ENGINEER: **SCOTT FRANKOVICH, P.E.**
LICENSED PROFESSIONAL ENGINEER
TEXAS REGISTRATION NO. 130312

- LEGEND**
- B.L. INDICATES BUILDING LINE
 - U.E. INDICATES UTILITY EASEMENT
 - D.E. INDICATES DRAINAGE EASEMENT
 - W.L.E. INDICATES WATER LINE EASEMENT
 - S.S.E. INDICATES SANITARY SEWER EASEMENT
 - STM.S.E. INDICATES STORM SEWER EASEMENT
 - A.E. INDICATES AERIAL EASEMENT
 - V.A.M. INDICATES VISIBILITY ACCESS & MAINTENANCE EASEMENT
 - E.E. INDICATES ELECTRICAL EASEMENT
 - U.V.E. INDICATES UNOBSTRUCTED VISIBILITY EASEMENT
 - F.B.C.P.R. INDICATES FORT BEND COUNTY PLAT RECORDS
 - F.B.C.O.R. INDICATES FORT BEND COUNTY OFFICIAL RECORDS
 - F.B.C.O.P.R. INDICATES FORT BEND COUNTY OFFICIAL PUBLIC RECORDS
 - F.B.C.D.R. INDICATES FORT BEND COUNTY DEED RECORDS
 - F.N. INDICATES FILE NUMBER
 - VOL. INDICATES VOLUME
 - PG. INDICATES PAGE
 - RES. INDICATES RESERVE
 - R.O.W. INDICATES RIGHT-OF-WAY
 - INDICATES STREET NAME CHANGE
 - INDICATES TWO (2) FOOT SIDE YARD SETBACK



CURVE TABLE

CURVE	RADIUS	DELTA	ARC	CHORD BEARING	CHORD
C1	50.00	64°36'00"	56.37	S 42°32'16" E	53.44
C2	25.00	38°53'07"	16.97	S 55°23'42" E	16.64
C3	425.00	11°53'08"	88.16	S 30°00'35" E	88.00
C4	25.00	94°14'54"	41.12	S 2°03'26" W	36.64
C5	25.00	12°07'35"	5.29	S 11°54'42" E	5.28
C6	525.00	7°06'48"	65.18	S 21°31'53" E	65.14
C7	1775.00	0°39'38"	20.47	N 26°53'43" W	20.47
C8	25.00	93°35'40"	40.84	S 73°21'44" E	36.45
C9	750.00	13°34'02"	177.59	S 76°57'54" W	177.18
C10	750.00	23°54'29"	312.96	S 71°47'40" W	310.69
C11	1750.00	0°39'38"	20.18	S 26°53'43" E	20.18
C12	450.00	82°27'30"	647.63	N 14°06'54" E	593.17
C13	50.00	86°00'57"	75.06	S 81°38'52" E	68.21
C14	450.00	23°32'03"	184.84	S 26°52'22" E	183.54
C15	450.00	34°53'02"	273.98	S 32°32'52" E	269.77
C16	450.00	45°58'24"	361.07	S 33°55'28" E	351.48
C17	550.00	14°09'02"	135.83	S 18°00'46" E	135.49
C18	25.00	99°58'24"	43.62	S 20°11'41" W	38.29
C19	425.00	18°35'13"	137.87	S 39°05'07" E	137.27
C20	475.00	24°03'25"	199.44	N 39°33'37" W	197.98
C21	25.00	78°04'52"	34.07	N 66°34'20" W	31.49
C22	780.00	9°21'41"	127.44	S 79°04'04" W	127.30
C23	25.00	101°43'25"	44.39	S 32°53'13" W	38.78
C24	575.00	8°49'18"	88.53	N 20°40'38" W	88.44
C25	25.00	85°05'03"	37.12	N 58°48'31" W	33.81

CURVE TABLE

CURVE	RADIUS	DELTA	ARC	CHORD BEARING	CHORD
C26	720.00	18°48'32"	236.36	S 69°14'42" W	235.30
C27	25.00	86°24'20"	37.70	S 16°38'16" W	34.23
C28	1725.00	0°39'38"	19.89	S 26°53'43" E	19.89
C29	25.00	86°57'16"	37.94	N 16°21'48" E	34.40
C30	475.00	82°27'30"	683.61	N 14°06'54" E	626.12
C31	25.00	32°14'22"	14.07	N 39°13'29" E	13.88
C32	50.00	150°29'40"	131.33	S 81°38'52" E	96.70
C33	25.00	32°14'22"	14.07	S 22°31'13" E	13.88
C34	475.00	23°32'03"	195.11	S 26°52'22" E	193.74
C35	25.00	94°42'46"	41.33	S 62°27'44" E	36.78
C36	25.00	102°53'15"	44.89	N 71°38'43" E	39.10
C37	425.00	45°53'15"	340.38	S 33°58'02" E	331.35
C38	25.00	89°32'41"	39.07	S 33°44'56" W	35.21
C39	780.00	12°39'34"	172.34	S 72°11'29" W	171.99
C40	25.00	87°01'27"	37.97	N 70°37'34" W	34.43
C41	425.00	47°18'56"	350.97	N 03°27'23" E	341.08
C42	25.00	91°32'42"	39.94	N 11°08'18" W	35.83
C43	425.00	20°42'37"	153.62	N 44°59'21" E	152.79
C44	25.00	86°00'57"	37.53	S 81°38'52" E	34.10
C45	425.00	23°32'03"	174.57	S 26°52'22" E	173.34
C46	25.00	90°22'42"	39.43	S 30°05'00" W	35.47
C47	720.00	8°28'34"	106.51	N 79°30'38" W	106.42
C48	25.00	85°18'49"	37.23	N 53°35'40" W	33.88
C49	475.00	45°58'24"	381.13	N 33°55'28" W	370.99
C50	1725.00	0°29'32"	14.82	S 27°28'18" E	14.82

LINE TABLE

LINE	BEARING	DISTANCE
L1	N 79°45'44" E	20.00'
L2	S 24°04'01" E	84.47'
L3	S 19°49'07" E	60.00'
L4	S 19°41'23" W	97.71'
L5	S 11°54'06" W	108.33'
L6	S 13°06'29" W	25.94'
L7	N 57°16'27" W	53.26'
L8	N 38°03'55" W	84.79'
L9	N 27°36'02" W	89.01'
L10	N 58°35'14" W	21.07'
L11	S 75°36'34" W	114.56'
L12	S 64°54'43" W	50.00'
L13	S 63°47'38" W	80.38'
L14	S 62°46'28" W	50.00'
L15	N 63°26'06" E	50.00'
L16	N 22°13'39" E	82.70'
L17	N 27°06'51" W	56.81'
L18	S 10°56'16" E	53.66'
L19	N 27°06'51" W	3.72'
L20	S 56°54'39" E	18.39'
L21	N 27°06'51" W	2.85'
L22	N 10°56'16" W	4.24'
L23	N 56°54'39" W	28.32'
L24	S 26°10'18" E	58.34'

LINE TABLE

LINE	BEARING	DISTANCE
L25	S 71°29'08" E	11.05'
L26	N 35°57'09" W	64.56'
L27	S 54°58'42" W	42.08'
L28	S 38°47'27" W	25.87'
L29	S 49°25'46" W	24.87'
L30	N 19°26'20" E	33.38'
L31	N 22°47'06" W	36.74'
L32	S 67°12'54" W	15.00'
L33	S 05°13'12" W	46.43'
L34	N 84°48'42" W	15.00'
L35	N 16°59'54" E	59.61'
L36	N 73°42'47" W	15.00'
L37	S 16°59'54" W	51.56'
L38	N 72°06'59" W	15.00'
L39	S 25°59'47" E	17.26'
L40	S 25°46'28" E	17.48'
L41	S 27°13'32" E	15.00'
L42	N 54°02'51" E	10.01'
L43	N 53°40'46" E	15.00'
L44	N 39°06'57" W	9.46'
L45	S 54°58'42" W	15.00'
L46	N 38°59'46" W	15.00'
L47	S 54°58'42" W	10.02'
L48	S 38°59'46" E	15.00'

RESERVE TABLE

RESERVE	ACREAGE	SQ.FT.	TYPE	MAINTENANCE/OWNERSHIP
A	0.195	8,477	RESTRICTED TO LANDSCAPE	SIENNA COMMUNITY ASSOCIATION, INC. (S.C.A.I.)/SIENNA MUNICIPAL UTILITY DISTRICT NO. 5
B	0.455	19,822	RESTRICTED TO LANDSCAPE	SIENNA COMMUNITY ASSOCIATION, INC. (S.C.A.I.)/SIENNA MUNICIPAL UTILITY DISTRICT NO. 5
C	6.525	284,218	RESTRICTED TO DRAINAGE	SIENNA PARKS & LEVEE IMPROVEMENT DISTRICT (S.P.L.I.D.)
D	1.066	46,442	RESTRICTED TO MAINTENANCE BERM	SIENNA PARKS & LEVEE IMPROVEMENT DISTRICT (S.P.L.I.D.)
E	0.308	13,415	RESTRICTED TO DRAINAGE	SIENNA COMMUNITY ASSOCIATION, INC. (S.C.A.I.)/SIENNA MUNICIPAL UTILITY DISTRICT NO. 5
F	0.237	10,322	RESTRICTED TO DRAINAGE	SIENNA COMMUNITY ASSOCIATION, INC. (S.C.A.I.)/SIENNA MUNICIPAL UTILITY DISTRICT NO. 5
G	0.094	4,074	RESTRICTED TO LANDSCAPE	SIENNA COMMUNITY ASSOCIATION, INC. (S.C.A.I.)/SIENNA MUNICIPAL UTILITY DISTRICT NO. 5
H	0.122	5,306	RESTRICTED TO LANDSCAPE	SIENNA COMMUNITY ASSOCIATION, INC. (S.C.A.I.)/SIENNA MUNICIPAL UTILITY DISTRICT NO. 5
I	0.066	2,862	RESTRICTED TO LANDSCAPE	SIENNA COMMUNITY ASSOCIATION, INC. (S.C.A.I.)/SIENNA MUNICIPAL UTILITY DISTRICT NO. 5
J	0.030	1,315	RESTRICTED TO LANDSCAPE	SIENNA COMMUNITY ASSOCIATION, INC. (S.C.A.I.)/SIENNA MUNICIPAL UTILITY DISTRICT NO. 5
K	0.026	1,130	RESTRICTED TO LANDSCAPE	SIENNA COMMUNITY ASSOCIATION, INC. (S.C.A.I.)/SIENNA MUNICIPAL UTILITY DISTRICT NO. 5
L	2.002	87,225	RESTRICTED TO DRAINAGE	SIENNA COMMUNITY ASSOCIATION, INC. (S.C.A.I.)/SIENNA MUNICIPAL UTILITY DISTRICT NO. 5
TOTAL	11.126	484,608		

SIENNA SECTION 54
 A SUBDIVISION OF 23,233 ACRES OF LAND SITUATED IN THE WILLIAM HALL SURVEY, ABSTRACT 31, FORT BEND COUNTY, TEXAS.
 81 LOTS 12 RESERVES (11,126 ACRES) 6 BLOCKS
 SEPTEMBER 18, 2024 JOB NO. 1416-1554P
 OWNERS:
TOLL-GTIS PROPERTY OWNER, LLC
 JIMMIE F. JENKINS, AUTHORIZED REPRESENTATIVE
 10110 WEST SAM HOUSTON PARKWAY NORTH, SUITE 210, HOUSTON, TEXAS 77064
 PH: (281) 894-8655
SIENNA PARKS & LEVEE IMPROVEMENT DISTRICT
 OF FORT BEND COUNTY, TEXAS
 TEMIKA B. JONES, PRESIDENT
 202 CENTURY SQUARE BLVD, SUGAR LAND, TEXAS 77478-3796
 PH: (281) 500-6050

GPI PARTNERS **LJA Engineering, Inc.**

SURVEYOR: ENGINEER:
 4724 VISTA ROAD 18PELS FIRM #10130300 1904 W. Grand Parkway North Phone 713.953.5200
 PASADENA, TX 77505 G8Survey@G8Survey.com Suite 100 Fax 713.953.5026
 PHONE: 281-499-4539 www.G8Survey.com Katy, Texas 77449 FRN-F-1386