



Fort Bend County Engineering  
FORT BEND COUNTY, TEXAS

J. Stacy Slawinski, P.E.  
County Engineer

August 6, 2024

Commissioner Vincent M. Morales, Jr.  
Fort Bend County Precinct 1  
22333 Grand Corner Drive  
Katy, Texas 77494

**RE: Traffic Control Plan for Willie Melton Elementary School**

Dear Commissioner:

Fort Bend County Engineering Department has completed the traffic control plan for the newly constructed Willie Melton Elementary School (platted as Viola Randle Elementary School). This TCP includes the following, in effect from 7:00 – 7:50 a.m. and 3:00 – 3:40 p.m.:

- School zone speed limits of 20 mph on Jordan Ranch Boulevard and Torrey Pines Drive.

The TCP also includes the following, in effect from 6:30 – 8:30 a.m. and 2:00 – 4:00 p.m.:

- No Parking, Stopping, Standing signs on both sides of Jordan Ranch Boulevard and Torrey Pines Drive.
- Southbound No U-turn sign on Jordan Ranch Boulevard at Torrey Pines Drive.
- Northbound No Left Turn sign on Jordan Ranch Boulevard at the north school access.

The public hearing date for acceptance for the plan will be scheduled on the next available Commissioner's Court Agenda.

A copy of the traffic control plan is attached for your review. If we can be of further assistance please do not hesitate to contact me at 281-633-7528 or [chris.debaillon@fortbendcountytexas.gov](mailto:chris.debaillon@fortbendcountytexas.gov).

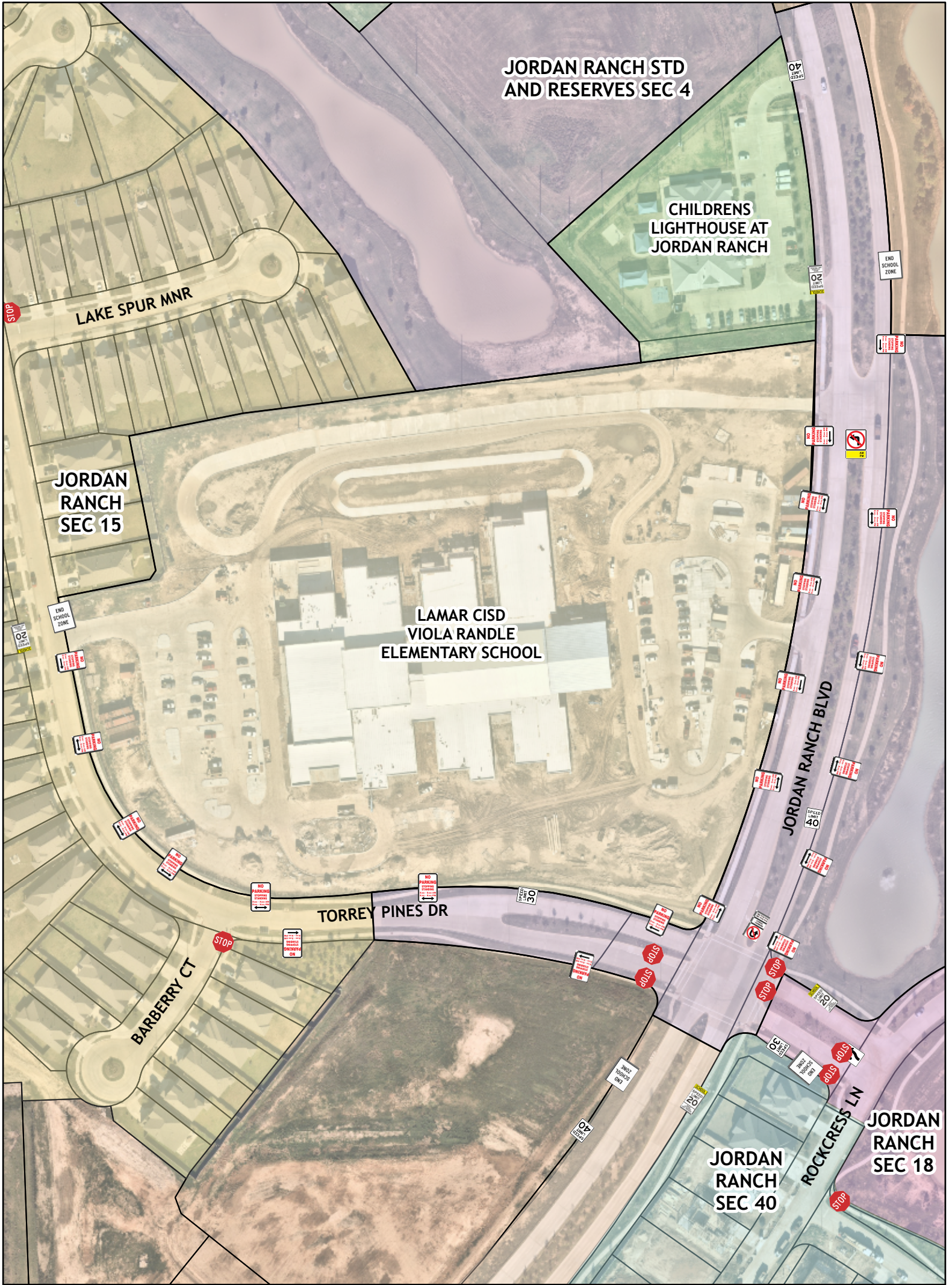
Sincerely,

Chris Debaillon, PE, PTOE  
Assistant County Engineer - Traffic

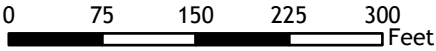
cc: Judge KP George, County Judge  
Scott Wieghat - FBC Road & Bridge  
Brian Fields - FBC Road & Bridge  
Major Rudy Castaneda – FBC Sheriff's Office [Rudy.Castandea@fortbendcountytexas.gov](mailto:Rudy.Castandea@fortbendcountytexas.gov)  
Major Manuel Zamora – FBC Sheriff's Office [Manuel.Zamora@fortbendcountytexas.gov](mailto:Manuel.Zamora@fortbendcountytexas.gov)  
File

301 Jackson St., Suite 401, Richmond, TX 77469  
Phone 281-633-7500





Willie Melton Elementary School Signs



- Keep Right (Graphic)
- No Left Turn - (School)
- No Parking, Stopping, Standing (Arrow Left)
- No Parking, Stopping, Standing (Arrow Right)

- Sign Legend
- No Parking, Stopping, Standing (Double Arrow)
  - No U Turn - (School)
  - School Zone (End)

- School Zone - 20 mph
- Speed Limit 30 mph
- Speed Limit 40 mph
- Stop

Plan by: Engineering GIS  
Date: 08/05/2024  
Plan Approved by: Chris Debaillon, PE PTOE  
Date: CD 8/6/2024

Notes:  
The purpose of this traffic control plan is to establish traffic control for Willie Melton Elementary School During School days from 6:30 - 8:30 am, 2-4 pm.