



September 25, 2023

Fort Bend County Engineering  
c/o Ms. Chelsea Goates, CFM  
Permit Coordinator  
301 Jackson Street, Ste 401  
Richmond, Texas 77469

**Re: Proposed Street Facilities for Old South  
Drive Pavement Replacement (Permit # APP-71446)**

Honorable Commissioners and County Judge,

This letter is to request permission and seek approval for the closure of Old South Drive. This closure will allow for the replacement of 390 square yards of pavement and will benefit Pecan Grove Municipal Utility District's residents. If your permission and approval are granted, we plan to begin closing on October 11<sup>th</sup> at 10:00 am for approximately 30 days.

Sincerely,

**Elite Construction and Engineering Services, LLC**

Ariel Mejia Jr., P.E.

**Attachments:**

Performance Bond 100% Construction Cost  
Traffic Control Plan

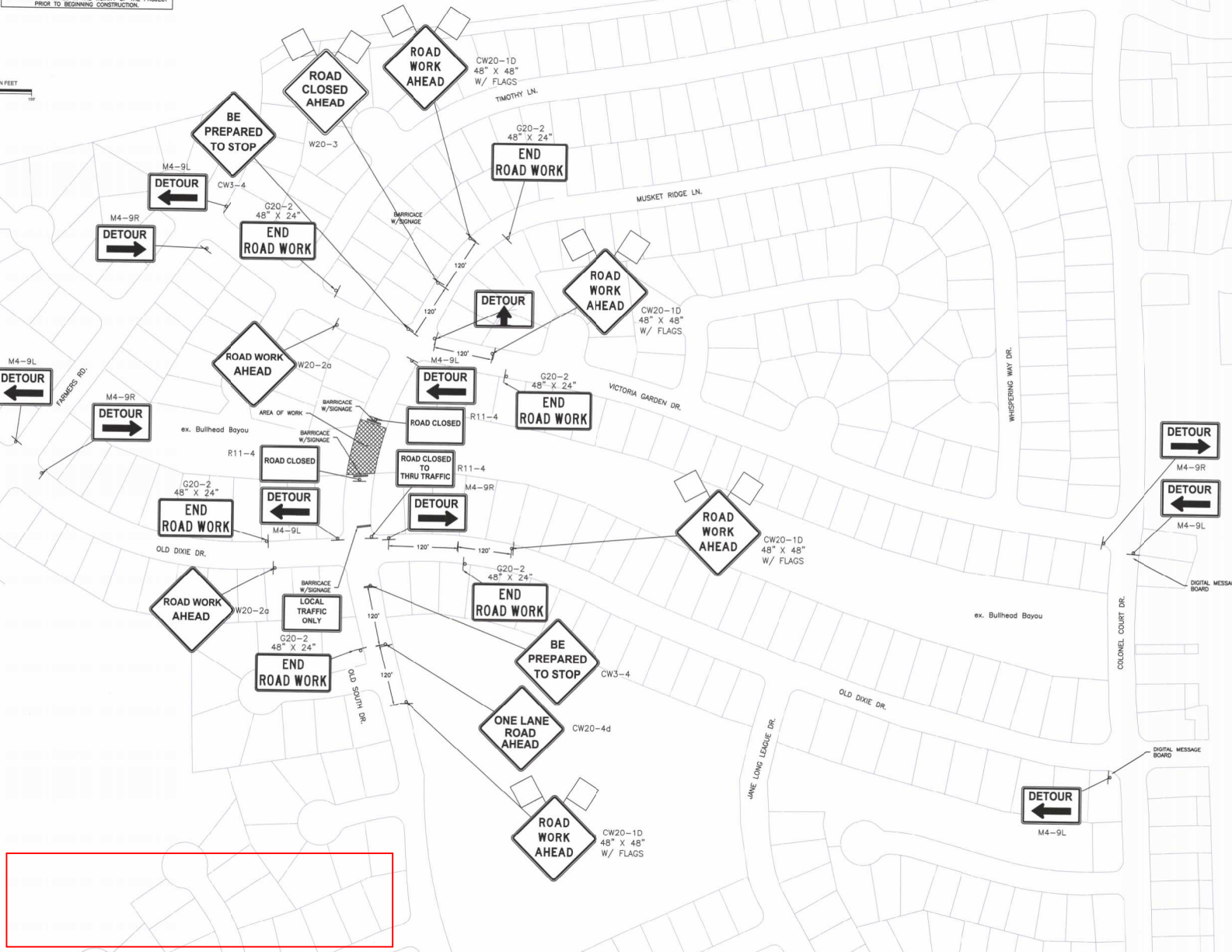


GRAPHIC SCALE IN FEET  
0 20 40 60 80 100

**WARNING:**  
OVERHEAD AND UNDERGROUND UTILITIES MAY EXIST IN THE VICINITY OF THIS PROJECT. LOCATIONS SHOWN FOR EXISTING UTILITIES ARE APPROXIMATE AND OTHER UTILITIES MAY EXIST IN THE VICINITY OF THE PROJECT WHICH ARE NOT SHOWN IN THE PLANS.  
IT IS THE RESPONSIBILITY OF THE CONTRACTOR TO LOCATE ALL EXISTING UTILITIES IN THE VICINITY OF THE PROJECT PRIOR TO BEGINNING CONSTRUCTION.

**NOTES:**

- A. CONTRACTOR TO OBTAIN FORT BEND COUNTY PERFORMANCE BOND
- B. DIGITAL MESSAGE BOARDS WITH DETOUR DATES TO BE PLACED TWO WEEKS IN ADVANCE TO IMPLEMENTING DETOUR PLAN.



**VERIFICATION OF PRIVATE UTILITY LINES**

CenPoint Energy natural gas utilities shown. (Gas service lines are not shown). This signature not to be used for conflict certification.

Signature Valid for six months.

CenPoint Energy/UNDERGROUND Electrical Facilities verification ONLY.

(This signature verifies existing underground facilities - not to be used for conflict certification.)

Signature Valid for six months.

Date: \_\_\_\_\_

**BENCHMARK(S) / FLOODPLAIN**

**BENCHMARK/FLOODPLAIN:**  
Elevations shown hereon are based on the Pecan Grove MUD Benchmark system. The nearest reference mark is RM03.

Temporary Benchmark  
"X" scribed in concrete sidewalk on the northeast side of project limits.  
Elevation = 82.44' (NAVD88 adjustment).

APPR.	REVISION	DATE

**APPROVED:**

Development Coordinator: \_\_\_\_\_

DATE: \_\_\_\_\_

**CITY OF RICHMOND**  
APPROVALS

CITY MANAGER  
TERRI VELA \_\_\_\_\_ DATE: \_\_\_\_\_

CITY ENGINEER  
DUANE R. WHITEHEAD \_\_\_\_\_ DATE: \_\_\_\_\_

**ODYSSEY ENGINEERING GROUP**  
2500 Tanglewilde Street, Suite 480  
Houston, Texas 77063  
t: 281.306.0240 | www.odysseeyg.com  
TBP# No. F-17637

**CITY OF RICHMOND  
FORT BEND COUNTY, TEXAS**  
600 Morton  
Richmond, Texas 77469  
(281) 348-0509

**RICHMOND TEXAS**  
COUNTY SEAT OF FORT BEND

7-12-2023

**ODYSSEY ENGINEERING GROUP**

2500 Tanglewilde Street, Suite 480  
Houston, Texas 77063  
t: 281.306.0240 | www.odysseeyg.com  
TBP# No. F-17637

**CITY OF RICHMOND  
FORT BEND COUNTY, TEXAS**

600 Morton  
Richmond, Texas 77469  
(281) 348-0509

**RICHMOND TEXAS**  
COUNTY SEAT OF FORT BEND

**PECAN GROVE M.U.D.  
OLD SOUTH DRIVE PAVEMENT  
REPLACEMENT**

**TRAFFIC CONTROL LAYOUT**

SURV. J.M.	DATE 12/22	JOB NO. 17-020-113
DESIGN J.M.	DATE 01/23	FILE: 17020113-LA-TRAFFIC CONTROL
DRAW J.M.	DATE 01/23	PLOT SCALE: 1:1
CHECK J.M.	DATE 02/23	
APPR. J.M.	DATE 02/23	

SCALE: HORIZ. 1" = 100'  
VERT. 1" = 4'-0"

1-17020113  
SHEET 5 OF 23 SHEETS

C:\17-020-113\Drawings\Layouts\17020113-LA-TRAFFIC CONTROL.dwg Jul 11, 2023 11:08am Edited by: owkins