



Member Login 

Search our site...



- [Home](#)
- [About Us](#)
- [Membership](#)
- [Meetings](#)
- [Inspection/Accreditation](#)
- [Resources](#)
- [Education](#)
- [Public Information](#)



Registration Information

REGISTER NOW

<u>Registration Category</u>	<u>Early (Reduced) Registration Rates ON OR BEFORE September 11, 2023</u>	<u>Registration Rates After September 11, 2023</u>
NAME Member	\$850	\$1,000
Resident NAME Member	FREE	FREE
Fellow-in-Training NAME Member	FREE	FREE
Resident NAME Member	FREE	FREE
Medical Student NAME Member	FREE	FREE
Affiliate - Trainee NAME Member	FREE	FREE
International Corresponding Member	\$690	\$840
Affiliate NAME Member	\$780	\$930
Non-Member	\$1,190	\$1,340
Spouse/Guest	\$555	\$705
Daily Registration Fee	\$400	\$550

CME/SAM Fees

NAME Member Early (on or before September 11) Fee - \$100

NAME Member Late (after September 11) Fee - \$150

Non-Member Early (on or before September 11) Fee - \$150

Non-Member Late (after September 11) Fee - \$200

Optional Meetings/Activities (click for descriptions)

Welcome Reception and Dinner (Oct. 13) (non-registrant) - \$95

Navigating Governmental Affairs and Advocacy - Breakfast Briefing - \$20

Annual Rigor Run/Walk (Oct. 15) - \$30

Randy Hanzlick Memorial Cadaver Open Golf Tournament (Oct. 15) - \$80 (Bucket of balls included)

President's Reception (Oct. 15) - \$20

Learn to Lead in Forensic Pathology During Crisis from Chief Medical Examiners Breakfast Workshop (Oct. 16) - \$25

Femme Fatale 2.0 Luncheon (Oct. 16) - \$70

The Business of Forensic Pathology Breakfast (Oct. 17) - \$20

NAME Luncheon (Oct. 17) (non-registrant) - \$80

DEADLINES: Early (reduced) registration rates are available through **September 11, 2023**. Registration is available online at www.thename.org, or by mail, through September 11, 2023. After September 11, 2023, registration is closed, and only onsite registration will be available.

CANCELLATION POLICY: Cancellations received by September 11, 50% refunded. Cancellations received after September 11, no refunds will be made.

[Registration Form \(PDF\)](#)

REGISTER NOW

Quick Links

[NAME Annual Meeting](#)

[NAME Medical Student Webinars](#)

[NAME International Relations](#)

[Dues Renewal](#)

[Donate to NAME](#)

[Join the NAME Foundation](#)

[Join Now](#)

[Job Openings](#)

[Workforce Shortage](#)

[Workplace Stress and Wellness](#)

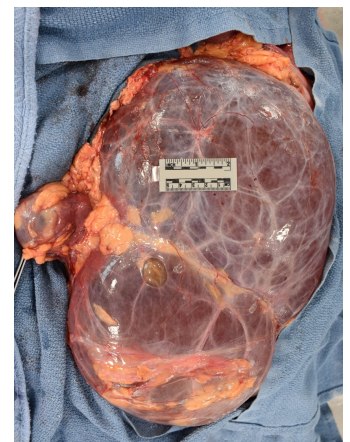
[Forensic Pathology Fellowship](#)

[MDI Resources](#)

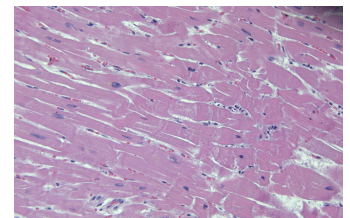
[NAME & Forensic Pathologist Data](#)

[Deceased Forensic Pathologists](#)

EAC Links and Questions

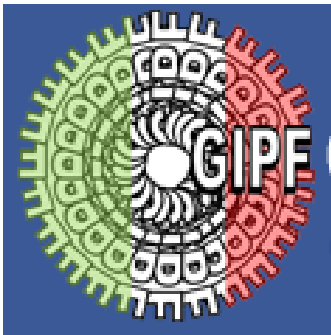


[Case #77](#)



[Case of the Week - July 21, 2023](#)

Announcements



[The GIPF \(Gruppo Italiano di Patologia Forense\)](#)



[Professional Quick Start Guide for NAME](#)

National Association of Medical Examiners



[Back to top](#)

powered by MemberClicks