

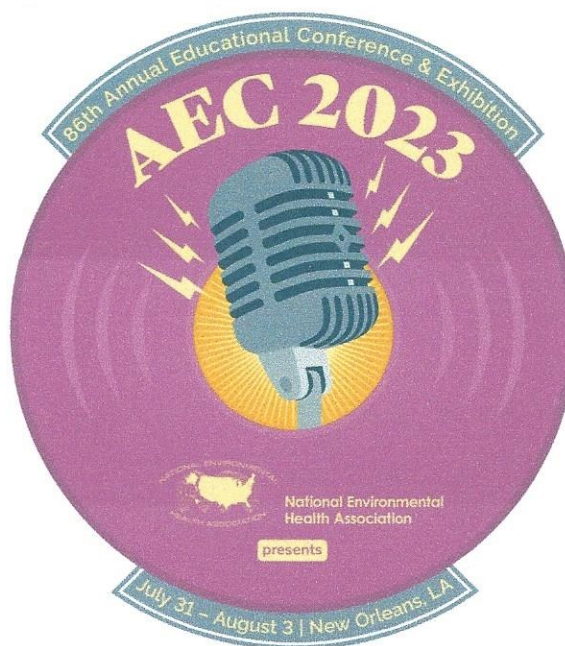
# 2023 Annual Educational Conference & Exhibition

## Let's Connect

2023 Annual Educational Conference & Exhibition

**July 31-August 3, 2023**

**New Orleans, Louisiana (Hilton  
New Orleans Riverside) and  
Virtually**



**EXHIBITOR REGISTRATION <[HTTPS://2022.NEHA.ORG/2023-ANNUAL-EDUCATIONAL-CONFERENCE-EXHIBITION/EXHIBITION](https://2022.neha.org/2023-annual-educational-conference-exhibition/exhibition)>**

The NEHA AEC is so much more than a conference. It is the nexus for environmental health training, education, networking, and advancement. Our AEC is the most comprehensive training and education investment your organization can make to achieve immediate and long-term benefits.

- Acquire practical and real-world information and expertise from like minded professionals that share your passion for environmental health.
- Leave trained, motivated, inspired, and empowered to further advance your organization and yourself.
- Gain the skills, knowledge, and expertise needed to help solve your organization's daily and strategic challenges and improve your bottom-line results.
- Earn continuing education (CE) credit to maintain your professional credential(s).

For more information about the AEC, email [\*\*aec@neha.org\*\*](mailto:aec@neha.org).



**Registration <<https://www.neha.org/node/3971>>**

Registration opens December 1.



**Call for Abstracts <<http://www.neha.org/node/2794/>>**

Call for abstracts open August 29-September 30.

**SUBMIT AN ABSTRACT <<HTTP://WWW.NEHA.ORG/NODE/2794/>>**



**Sponsorships <<https://www.neha.org/node/10481>>**

Maximize your exposure to environmental health professionals with a sponsorship.

**SPONSORSHIP OPPORTUNITIES**

**<<HTTPS://WWW.NEHA.ORG/NODE/10481>>**



**Raising the Voice  
of the  
Environmental  
Health Workforce**

# Agenda

## Contents

### July 31st, 2023 (Monday)

Keynote Address.....	1
----------------------	---

### August 1st, 2023 (Tuesday)

Grand Educational Session Kickoff .....	1
Climate & Health .....	1
Data & Technology .....	2
Food Safety .....	2
General Environmental Health .....	4
Healthy Communities .....	5
Louisiana Environmental Health .....	6
NCEH .....	7
NEHA-FDA RFFM Grant Program .....	8
Water .....	9
Workforce & Leadership.....	9
Keynote Address.....	10

### August 2nd, 2023 (Wednesday)

Grand Educational Session Kickoff .....	11
Climate & Health .....	11
Data & Technology .....	12
Emergency Preparedness & Response .....	13
Food Safety .....	14
General Environmental Health .....	16
Healthy Communities .....	17
Infectious & Vectorborne Diseases .....	18
NCEH .....	19
NEHA-FDA RFFM Grant Program .....	20
Water .....	21
Workforce & Leadership.....	22

### August 3rd, 2023 (Thursday)

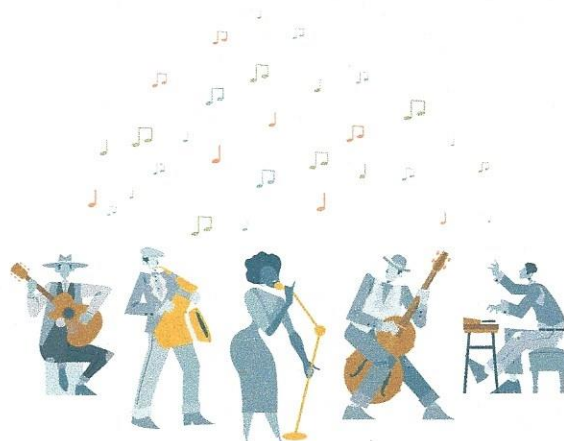
Climate & Health .....	23
Data & Technology .....	23
Emergency Preparedness & Response .....	24
Focused Populations .....	24
Food Safety .....	25
General Environmental Health .....	26
Healthy Communities .....	26
Infectious & Vectorborne Diseases .....	27
NCEH .....	27
NEHA-FDA RFFM Grant Program .....	29
Water .....	29
Workforce & Leadership.....	30
Closing Session.....	30

### Preconference (July 29th – 31st)

Body Art, Climate, Communication, Credentials, Data .....	31
Food Safety, Land Reuse, Leadership, Water Quality .....	32

**Please note that details are subject to change until July 10.**

 = available for virtual attendees



July 31st, 2023 (Monday)

## Keynote Address

### Communities and Climate Through the Lens of Environmental Health Practice ((1))

Maureen Lichtveld, MD, MPH  
University of Pittsburgh

August 1st, 2023 (Tuesday)

## Grand Educational Session Kickoff

### A Rodent Symposium: Effective Communications, Control Practices, and Utilizing Resources ((1))

Claudia Riegel, PhD  
City of New Orleans Mosquito, Termite and Rodent Control Board  
Imelda K. Moise, PhD, MPH  
University of Miami  
Janet A. Hurley, ACE, MPA  
Texas A&M AgriLife Extension Service

## Climate & Health

### A Climate and Communication Nexus ((1))

Leon Vinci, DHA, DAAS, MPH, RS  
Drexel University, CNHP

### NEHA Adopts a Solutions-Oriented Approach in Carving Out a Role for Environmental Health Professionals in Climate & Health ((1))

Steve Konkell, SB, MS, PhD  
U. of Alaska and Konkell & Associates  
David Dyjack, DrPH, CIH  
National Environmental Health Association (NEHA)  
Wilson Justin  
ANTHC

### What's New with the NEHA Climate and Health Program? ((1))

Amy Chang  
National Environmental Health Association (NEHA)  
Jesse Bliss, MPH  
National Environmental Health Association (NEHA)  
Jennie McAdams, MPH  
Franklin County Public Health

## **Visualizing the Climate Crisis for Alaskan Tribes Through Photographic Storytelling (1)**

**Gina Bare, RN**

National Environmental Health Association (NEHA)

**Amy Chang**

National Environmental Health Association (NEHA)

## **Connecting the Dots: Climate Change, Public Health, and Poverty (1)**

**Brittany Lewis, MPH, MNR, REHS**

Southern Nevada Health District

## **Alternative Resilience Water Strategies for Drought and Climate Risks**

**Regina Hirsch**

Watershed Progressive

## **Data & Technology**

### **Social Media and Environmental Health - Friend or Foe?**

**Chirag Bhatt, RS, CCFS**

HS GovTech Solutions

## **Food Safety**

### **Cannabis Industry and Regulatory Oversight: A Brave New World**

**Lauren Perdue, BS, REHS-T**

State of Nevada Cannabis Compliance Board

**Bruce Nisberg, CPM, REHS-T**

State of Nevada Cannabis Compliance Board

**Kyle Paterson, BS, REHS-T**

State of Nevada Cannabis Compliance Board

### **Food Safety Consultation Panel: Achieving Active Managerial Control through Food Safety Consultation**

**Scott Holmes, REHS, MS**

Lincoln-Lancaster County Health Department

**Andrea Bethke, REHS**

Lincoln-Lancaster County Health Department

### **“But I don’t Want to Go Out to Eat”: Raising Awareness to Make Dining Safer for People with Food Allergies**

**Cindy Weckwerth, REHS, MS**

City of Minneapolis Health Department (MN)

**Gebi Kurkura, REHS**

City of Minneapolis Health Department (MN)

### **Commercial Ice Machine Contamination: How to Inspect Properly and how to Properly Clean the Machine**

**Chris Lamond**

International Packaged Ice Association

**Preferences, Perceptions, & Behaviors: Findings  
from a Survey of Minnesota Food & Beverage Workers**

**Nicole Hedeem, RS, MS**

Minnesota Department of Health

**Plumbing in Food Establishments: Health & Code Working Together**

**Kacey Roman**

City of Freeport, Texas

**Extra Points for Nausea: A Foodborne Illness Scoring System** ((p))

**Chris Manley, REHS**

Larimer County, Colorado

**Erika Cathey, MPH**

Larimer County, Colorado

**Nicole Aguilar**

Larimer County, Colorado

**Food Safety on the Rails** ((p))

**Bridget Sweet, LPD, REHS/RS, CP-FS**

Amtrak

**Implementing Digital Temperature Systems for Food Safety** ((p))

**Jean Edsall, REHS**

The Kroger Company

**Lissy Wilcoxson, CP-FS**

The Kroger Company

**FSMA Food Traceability at Retail**

**Joetta DeFrancesco, MAT**

National Environmental Health Association (NEHA)

**Using Existing Data for Baseline Risk Factor Study** ((p))

**Patrick Naabien, BTech, MBA, DMGT, REHS/RS**

City of St. Louis Department of Health

**Retail Program Standards Networks: Lessons Learned and Future  
Directions for the Retail Food Regulatory Association Collaborative** ((p))

**Nicholas Adams, MHS, REHS**

National Association Of County And City Health Officials (NACCHO)

**Tips For Plan Reviewers When Approving Food Equipment** ((p))

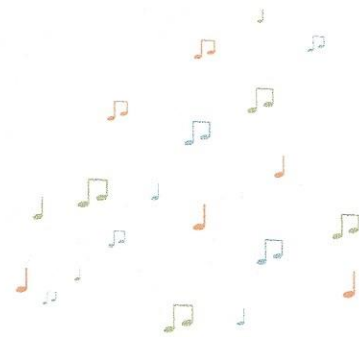
**Derek DeLand, MPH, REHS/RS**

NSF International

**Two Decades of Epi-Ready** ((p))

**Amber Thompson (Potts), REHS/RS CP-FS**

National Environmental Health Association (NEHA)



## General Environmental Health

### Body Art Roundtables & Demonstrations

**Christl Tate**

National Environmental Health Association (NEHA)

**Selina Medina**

**Steve Joyner**

**Matt Bavougian**

**Michael Crea**

### Trending Drug Issues: Fentanyl & More

**Leslie Faulkner, PhD**

Drug Enforcement Administration New Orleans Field Division

### What's All the Hubbub About Bugs? ((1))

**Brittany Lewis, MPH, MNR, REHS**

Southern Nevada Health District

### A New Look at ATP for Measuring Biological Cleanliness: A Sanitarian's Perspective ((1))

**Robert W. Powitz, MPH, PhD, RS, CP-FS, DABFET, DLAAS**

R.W. Powitz & Associates, P.C.

### Environmental Health in Congress ((1))

**Harold Chase, MPH**

NSF

**Doug Farquhar, JD**

National Environmental Health Association (NEHA)

### Revision With a Vision: Reshaping Minnesota's Food, Pools, and Lodging Program Evaluation Process Through Partnerships, Continuous Improvement, and Technology ((1))

**Denise Schumacher, REHS/RS**

Minnesota Department of Health

**Angie Wheeler, REHS/RS**

Minnesota Department of Health

### Environmental Health Diseases and Global Flooding:

#### Using a Digital Photovoice to tell the Story of a Shared Global Perspective

**Dhitnirut Ratnapradipa, BA**

Creighton University School Of Medicine, Omaha, NE

**Danielle Hotalling, BA**

Creighton University School Of Medicine, Omaha, NE

**Kevin Boes, BA**

Creighton University School Of Medicine, Omaha, NE

**Muneeb Khan, BS Creighton University**

Creighton University School Of Medicine, Omaha, NE

**Timothy Guetterman, PhD**

University of Michigan School of Medicine, Ann Arbor, MI

## **Collaboration for Field Intervention Evaluation Research in Environmental Public Health in Rural Ethiopia**

**Derek Shendell, DEnv, MPH, AB**

Rutgers School of Public Health

**Alexa Fiumarelli, BS, REHS**

Rutgers School of Public Health

**Justin Panzarella, BS, REHS**

Rutgers School of Public Health

**Koshy Koshy, PhD, MS**

Rutgers School of Public Health

**Sue Wilkins, BA**

Project Ethiopia

## **Healthy Communities**

### **Barriers and Opportunities to Lead Remediation Efforts**

**Jennie McAdams, MPH, EHST**

Franklin County Public Health

**Jeff Gibbs, EHS**

Franklin County Public Health

### **Aluminum Cookpots: A Previously Unrecognized Source of Lead Exposure in the United States**

**Katie Fellows**

King County Hazardous Waste Management Program

### **Blood Lead Mapping: Methods and Tools for Lead Prioritization, Prevention, and Mitigation**

**Megan Christian, MPH**

U.S. EPA Office of Research and Development

**Valerie Zartarian, PhD, MS**

U.S. EPA Office of Research and Development

**Kristie Rea Simoneau, MA**

U.S. EPA Region 1

**Rogelio Tornero-Velez, PhD**

U.S. EPA Office of Research and Development

### **Equipping Educators to Empower Students with a Tracking Education Kit**

**Chad Curtiss**

Center for Disease Control and Prevention

**Pooja Gala**

Center for Disease Control and Prevention

### **How an Unfunded Mandate has Protected Texas Schools for 30 Years Using IPM**

**Janet Hurley, BS, MPA, ACE**

Texas A&M AgriLife Extension Services

## **Louisiana Environmental Health**

### **Environmental Justice in Louisiana: Where's the Science?**

**Kimberly Terrell**

Tulane University

**Gianna St. Julien**

Tulane Environmental Law Clinic

### **Past, Present, and Future: Rodent and Mosquito-borne Disease Preparedness in the City of New Orleans**

**Carrie Cottone, PhD**

City of New Orleans Mosquito, Termite, and Rodent Control Board

**Jennifer Breaux, PhD**

City of New Orleans Mosquito, Termite, and Rodent Control Board

**Mark Janowiecki, PhD, BCE**

City of New Orleans Mosquito, Termite, and Rodent Control Board

**Rachel Denny, MSPH**

City of New Orleans Mosquito, Termite, and Rodent Control Board

**Claudia Riegel, PhD**

City of New Orleans Mosquito, Termite, and Rodent Control Board

### **Louisiana's Wicked Climate Future: A Cautionary Tale About Hurricanes, Floods and Heat, Oh My!**

**Adrienne Katner, DEnv, MS**

Louisiana State University School of Public Health

**Kari Brisolaro, ScD MSPH**

Louisiana State University School of Public Health

**Susanne Straif-Bourgeois, PhD, MPH, MS**

Louisiana State University School of Public Health

**Daniel Harrington, ScD, CIH**

Louisiana State University School of Public Health

**Ruijie "Rebecca" Bian, PhD**

Louisiana Transportation Research Center (LTRC)

### **Rebuilding After Climate Disasters, Population Displacements and Government Abandonment: Louisiana Case Studies in Fostering Community Ownership, Equity and Resilience**

**Adrienne Katner, DEnv, MS**

Louisiana State University School of Public Health

**Kari Brisolaro, ScD, MSPH**

Louisiana State University School of Public Health

**Amy Stelly, MS, BS**

Claiborne Avenue Alliance

**Rebeca De Jesús Crespo, PhD, MS, BS**

Louisiana State University

**Tricia "Blyss" Wallace, BA**

Lincoln Beach Advisory Committee

### **Strengthening the Louisiana Private Well Owner Network**

**Darcie Olexia, MSPH**

Louisiana Department of Health, Office of Public Health, Section of Environmental Epidemiology and Toxicology

**Achieving Resilient Communities Through Participatory Multilingual Health Education and Communications with Farmworkers on Extreme Heat and Wildfire Smoke****Catalina Garzon-Galvis, MCP**

Tracking California/Public Health Institute

**Elizabeth Martinez****Lideres Campesinas****Juvenal Solano**

Mixteco Indigena Community Organizing Project

**NCEH: Building Capacity to use EH Data for Data-driven Decision Making****Angie Wheeler, REHS/RS**

Minnesota Department of Health

**NCEH: Building Environmental Health Capacity in Pennsylvania through Spatial Data, Environmental Justice Training, and More****Stephanie Hasanali**

Pennsylvania Department of Health

**Nathan Miller, BA**

Pennsylvania Department of Health

**Anil Nair, PhD MPH**

Pennsylvania Department of Health

**Katie Sneeringer, DrPH**

Pennsylvania Department of Health

**Drew O'neil, BA**

Centers For Disease Control &amp; Prevention (CDC)

**NCEH: Unlocking the Data: Modernizing Environmental Health Surveillance Data****Hsini Lin, MS, ScD**

Arizona Department of Health Services

**NCEH: Attempt at Statewide Inventory of Water Wells and Onsite Sewage Systems-Georgia****Tim Callahan, MPH**

Georgia Department of Public Health

**NCEH: Building a Statewide Private Well Database with the Collaboration of Private Environmental Labs****Martin Zartarian**

NYS DOH

**Braden Savage**

NYS DOH

**NCEH: Legionella in Private Residential Wells in Sandy Valley, NV****Daniel Isler, PE, REHS**

Southern Nevada Health District

**NCEH: Handwashing and Disinfection Practices in a Nationally Representative sample of U.S. Adults During the COVID-19 Pandemic**

**E. Rickamer Hoover, PhD, MS**

Centers For Disease Control & Prevention (CDC)

**NCEH: Private Drinking Water Quality, Public Water Supply Availability and Trying to Understand Environmental Injustice and Impacts from Climate Change**

**Judy Manners, MS**

Tennessee Department of Health, Communicable and Environmental Diseases

**NCEH: Targeted Private Well Outreach to Neighbors of Homes with High Gross Alpha Radioactivity**

**Rebecca Schwartz**

New Jersey Department of Health - Environmental and Occupational Health Surveillance Program

**NCEH: Identifying Contributing Factors and Environmental Antecedents: Getting at the Root Cause of an Outbreak**

**Adam Kramer, ScD, MPH, RS, CFS**

Centers for Disease Control & Prevention (CDC)

**Beth Wittry, MPH, REHS**

Centers for Disease Control & Prevention (CDC)

**NEHA-FDA RFFM Grant Program**

**NEHA-FDA Retail Food Standardization Census**

**Rosie DeVito, MPH**

National Environmental Health Association (NEHA)

**Gagandeep Gill, DrPH**

National Environmental Health Association (NEHA)

**Joetta DeFrancesco**

National Environmental Health Association (NEHA)

**Manjit "Mike" Randhawa, MD, MPH**

National Environmental Health Association (NEHA)

**Assessing Training Needs of the Retail Food Regulatory Workforce: Implications for Design and Gap Analysis**

**Rance Baker**

National Environmental Health Association (NEHA)

**Julianne Manchester, PhD, LSSBB**

National Environmental Health Association (NEHA)

**Improving Resources and Implementing Training to Better Investigate Foodborne Outbreaks: A Minnesota RFFM Special Project**

**Nicole Hedeon, MS, RS**

Minnesota Department of Health



### **Building a Social Media Group as a Tool to Communicate with Operators**

**Amanda Anderson, MPH, RS**

Pima County Health Department

### **Leveraging Retail Program Standards and RFFM**

#### **Grant Funding to Drive Food Programmatic Changes**

**Michelle Bilodeau, REHS, RS**

Yolo County Environmental Health

### **Building Sustainability into a Retail Program Standards Local Jurisdiction Program**

**Nancy Coe, BasicMOST Certified, MiniMOST Certified, Lean Six Sigma Certification**

Wake County

### **Using RFFM Grants to Build a Stronger Food Safety Program**

**Bob Custard, REHS, CP-FS, CPO-I**

Jefferson County (WV) Health Department

**Gillian Beach, REHS, CPO-I**

Jefferson County (WV) Health Department

**Alexandra Demastes**

Jefferson County (WV) Health Department

## **Water**

### **Drinking Water Treatment Unit (DWTU) Standards: A Valuable Tool for the Sanitarian**

**Robert W. Powitz, MPH, PhD, RS, CP-FS, DABFET, DLAAS**

R.W. Powitz & Associates, P.C.

### **Legionella Occurrence in Homes Using Private Well Water**

**Steve Wilson, MS**

The Illinois State Water Survey at the University of Illinois

### **We Have a Plan for That! A Statewide Plan to Ensure Safe Drinking Water for Private Well Users**

**Frieda von Qualen, MDP**

Minnesota Department of Health

## **Workforce & Leadership**

### **Hearing from our Mentors---The NEHA History Project**

**Leon Vinci, DHA, DAAS, MPH, RS**

National Environmental Health Association (NEHA)

**Webster Young, Rear Admiral PHS (Ret), DAAS, RS**

National Environmental Health Association (NEHA) History Task Force

**Vincent Radke, DAAS, MPH, RS**

National Environmental Health Association (NEHA) History Task Force

**Priscilla Oliver, Environmental Health Faculty**

National Environmental Health Association (NEHA) History Task Force

**Hank Koren, PhD, EH**

National Environmental Health Association (NEHA) History Task Force

## **Bringing Environmental Health Data to Life for Teens**

**Lize Williams, MPS**

WA Department of Health

## **Massachusetts Environmental Health Ambassador Program:**

### **Promoting a Career in Environmental Health ((p))**

**Patrick Maloney, BS, MPAH, RS CHO**

Massachusetts Environmental Health Association

**Steven Ward, MA, MPH, RS/REHS**

Town of Ashland, MA

## **Knowledge, Attitudes and Awareness of Public High School Students Regarding Concepts and Environmental Health Aspects of Climate Change, Sustainability and Environmental Justice ((p))**

**Derek Shendell, DEnv, MPH, AB**

Rutgers School of Public Health

**Yvette Way, BA**

Rutgers School of Public Health

**Lily Black, MPH, BS**

Rutgers School of Public Health

## **Authentic LeadHERship: Overcoming the Imposter Syndrome ((p))**

**Michele Samarya-Timm, MA, HO, MCHES, REHS, CPH, DLAAS**

National Environmental Health Association (NEHA)

## **Addressing Modern Challenges for Gender Equity in the Environmental Health Profession: A NEHA LeadHERship Session ((p))**

**Michele Michele Samarya-Timm, MA, HO, MCHES, REHS, CPH, DLAAS**

National Environmental Health Association (NEHA)

## **Denver's Public Health Investigation Division's Three-Pronged Approach to Advancing EDI ((p))**

**Maggie Steele, CP-FS**

DDPHE-PHI

**Jennifer Bernal**

DDPHE

**Luz Sanchez**

DDPHE

**Jenny Hill**

## **Keynote Address**

### **Getting the Difficult Job Done ((p))**

**Lt. General Russel L. Honore**

USA (Ret.)

**Captain Timothy Jiggins**

USA



August 2nd, 2023 (Wednesday)

## Grand Educational Session Kickoff

### The Conundrum of Food Safety Culture: Breaking Through Barriers to Drive Improvement (1)

NEHA Business & Industry Affiliate

## Climate & Health

### Climate & Health in the Southeastern United States: Reflections on Post-Katrina Regional Impacts on New Orleans as a Harbinger of Adaptation and Mitigation Challenges Ahead (1)

Steve Konkel, PhD

U. of Alaska and Konkel & Associates

Wilson Justin

ANTHC

### Climate Change In New Orleans: The Coping Process - Impact, Mitigation, & Preparedness (1)

Leon Vinci, DHA, DAAS, MPH, RS

HPC

Juliette Frazier

Unite Us

Andy Salgado

PH Emergency & Environmental Health, NO Health Department

Mark Davis

Tulane Institute on Water Resources/Law/Policy

Marcy Barnett, CEM

Hurricane Response Hub

### Race, Forest Patches, and Heavy Metals: Geographies of Pollution Deposition in Baltimore, Maryland (1)

Drew Powell

University of Maryland Baltimore County

### Association of Mental Health Impacts with Drought: A Multi-state Analysis for the United States (2007-2014) (1)

Bharat Balyan

Centers for Disease Control & Prevention (CDC)

### Local Data Projects to Highlight Climate Change and Environmental Justice (1)

Jennie McAdams, MPH, EHST

Franklin County Public Health

## **Interdisciplinary Flood Risk Communication Using Digital Health: A Global Experience**

**Dhitinut Ratnapradipa, PhD**

Creighton University School of Medicine

**Megan Piotrowski**

Creighton University College of Nursing

**Farad Effan, MD**

Creighton University School of Medicine

**Renuka Kaur, MD**

Creighton University School of Medicine

**Muneeb Khan, BS**

Creighton University School of Medicine, Nebraska, NE

## **Climate Adaptation and Mitigation, Alaska: Response to Hurricane Merbok, Coastal Villages Relocation, Closures of King Crab Seasons and Alaska's Fossil Fuel Dilemma ((1))**

**Steve Konkell, PhD**

U. of Alaska and Konkell & Associates

**Wilson Justin**

ANTHC

## **Fighting Fire with Preparation: How Washington State is Leading the Public Health Response to Wildfire Smoke ((1))**

**Kaitlyn Kelly, MPH**

WA State Department of Health

**Cory Portner**

WA State Department of Health

## **Examining the Outcomes of Recent Climatic Events on Foodborne Diseases ((1))**

**Luma Akil, PhD, MS, CPH**

Jackson State University

## **Data & Technology**

### **A GIS Solution for Tracking and Responding to Non-Permitted Vending**

**Leilah Kelsey, REHS**

San Bernardino County Environmental Health Services

**Serene Ong**

San Bernardino County Environmental Health Services

**Andrew Mackey**

San Bernardino County Environmental Health Services

### **Environmental Public Health Tracking: Location-Based Community Profiles**

**Chris DuClos**

Florida Department of Health

**What's in Your Water: Mapping to Raise Awareness About  
Private Well Water Contamination Among Rural Gaston County, NC**

Samantha Dye, REHS  
Gaston County DHHS

**Transition to a State-wide Blood Lead Database: Methods and Outcomes  
of a Training Program for Local Public Health Partners in Minnesota**

Kathryn Haugen, MPH  
Minnesota Department of Health

**Environmental Public Health Tracking: Tips and Tools for Communicating Data**

Jena Losch, MPH  
Centers For Disease Control & Prevention (CDC) / National Centers for Environmental Health / Environmental  
Public Health Tracking

**How to Use SMART Data to Achieve SMART Goals: Health Department Edition**

Chad Curtiss  
Center for Disease Control and Prevention

**Cold Climate Anaerobic Digestion: The Pathway for the Waste-Energy Nexus**

Jasmine Perea, AS  
Alaska Pacific University

**Better Than Breadcrumbs: A Methodology To Traverse the Dark Forest of Research "Silos"**

Carl Grimes, CIEC, HHS  
Hayward Healthy Home Institute

**Community Needs Assessment Data Drive County Services**

Joann Fang Lee, MPH, REHS  
County of San Diego, Department of Environmental Health and Quality  
Darryl Booth, BS, MBA  
Accela

**Emergency Preparedness & Response**

**"This is a T.E.S.T.": An Innovative Tabletop Exercise Board Game**

James Gooch, MPH, REHS  
Centers For Disease Control & Prevention (CDC)  
Lauren Finklea, MS  
Centers For Disease Control & Prevention (CDC)

**Fit Testing: Post COVID Reflection**

Andrew Todd, RS, CPFS, HAZWOPER  
USPHS / US Food & Drug Administration (FDA) ORA  
Krista Ferry, REHS, HAZWOPER, CEHS  
US Food & Drug Administration (FDA)

## **Tools, Tabletop Exercises, and Resources on the Collaborative Roles and Capabilities of Environmental Health, Public Health and Associated Partners During Concurrent Disasters**

**Jesse Bliss, MPH**

National Environmental Health Association (NEHA)

**Kim Shoaf, PhD**

University of Utah

**James Gooch, MPH, REHS/RS**

Natural Hazards Team in the Office of Emergency Management ATSDR, Centers For Disease Control & Prevention (CDC)

**Reem Tariq, MSEH**

National Environmental Health Association (NEHA)

**Andrew Adams**

## **Food Safety**

### **Cannabis Consumption Lounge Inspections**

Jason Banales, REHS, BS

Cannabis Compliance Board

Bradly Haynes, REHST, BS

Cannabis Compliance Board

### **The Unintended Consequences of Conducting Cannabis Cultivation in an Indoor Industrial Setting**

Christine Shoemaker, BS, PCA, QAL, REHST

Cannabis Compliance Board

### **Regulation of Cannabis Production Facilities in Nevada**

Kyle Paterson, REHS-T

Cannabis Compliance Board

### **Synthetic Cannabinoids and their Regulation in Nevada**

Jason Banales, REHS, BS

Cannabis Compliance Board

Kara Cronkhite, REHS, BS, MPH

Cannabis Compliance Board

### **Creating Processes for Safer Temporary Food Events**

Holly Batchelor, REHS, BA

City of Minneapolis Health Department

### **FDA's Strategic Plan for IFSS Regulatory Training**

Alan Tart

US Food & Drug Administration (FDA)

### **Consultative Approach to Retail HACCP**

Dan Opsahl, REHS, MPA

Minnesota Department of Agriculture



**Development of a Water Store Inspection Standard:  
Violation Standards Document at the Southern Nevada Health District**

**Tory Rich, REHS, MPH**

SNHD

**Nikki Burns-Savage, REHS**

SNHD

**NCEH: Analyzing Retail Food Inspection Data in Ohio; Approaches and Limitations**

**Sarah Jensen, MPH, REHS, CP-FS**

Franklin County Public Health

**Karin Kasper, REHS**

Franklin County Public Health

**Use of Online Complaint Forms to Enhance Complaint-Based  
Surveillance for Foodborne Illness Outbreaks in Minnesota ((1))**

**Thuy Kim, MPH**

University of Minnesota School of Public Health

**30th Anniversary of the FDA Food Code ((1))**

**Jessica Otto, MPH, DAAS, REHS, CP-FS, HHS**

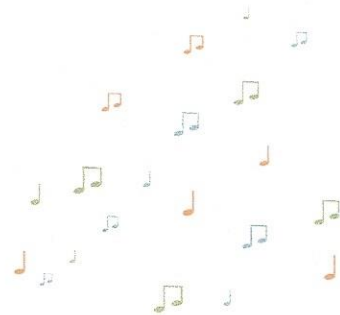
Food and Drug Administration

**Mary Cartagena**

Food and Drug Administration

**Glenda Lewis, MSPH**

Food and Drug Administration



**Decoding Food Code Adoption ((1))**

**Laura Wildey, MS, CP-FS**

National Environmental Health Association (NEHA)

**Jennifer Brown, MPH, REHS**

Wake County Government, Environmental Services/Environmental Health and Safety Division

**Laurie Williams, MS**

Food and Drug Administration, Center for Food Safety and Applied Nutrition, Office of Retail Food Safety

**Sheri Morris**

Pennsylvania Department of Agriculture

**Melissa Ham, REHS**

Wake County Government, Environmental Services/Environmental Health and Safety

**Embracing Food Freedom Laws ((1))**

**Corine Peplinski, MS, LEHP, REHS/RS**

Peoria City/County Health Department

**Justin Dwyer, LEHP**

Peoria City/County Health Department

**Evaluating and Improving Food Safety at Temporary Events ((1))**

**Joseph Addison, REHS, CP-FS**

Georgia Department of Public Health

**Tracee Guthrie, MA**

Virginia College of Osteopathic Medicine

### **Coming Soon: “Requirements for Additional Traceability Records for Certain Foods” (1)**

**Mario Seminara, RS, PCQI, ServSafe**

Food Safety Works LLC

### **A Survey Study to Investigate Food Handler’s Knowledge, Attitudes and Behaviour Towards Food Safety and Food Practices in Liverpool**

**Graeme Mitchell**

Liverpool John Moores University

### **Evaluation of the Impact of Compliance with Mitigation Strategies and Frequency of Restaurant Surface Cleaning and Sanitizing on Control of Norovirus Transmission from Ill Food Employees Using an Existing Quantitative Risk Assessment Model (1)**

**Laurie Williams, MS**

US Food & Drug Administration (FDA) - CFSAN

**Wendy Fanaselle, MS, REHS, DAAS, PMP**

City of Springfield, MA

## **General Environmental Health**

### **A Community-Based Rodent Surveillance Collaborative for Greater Public Health**

**Imelda Moise, MSPH, PhD**

Department of Geography, University of Miami

**Claudia Riegel, PhD, CPA**

City of New Orleans Mosquito, Termite and Rodent Control Board

**Janet Hurley, ACE, CPA**

Texas A&M AgriLife Extension

### **Public Health on the Move**

**Bridget Sweet, LPD, REHS/RS, CP-FS**

Amtrak

### **Identification of Products, Materials & Equipment Commonly Found In A Body Art Facility**

**Michael Crea, RS**

Z-Edge Tattoo & Body Piercing

### **Best Practices for Developing Successful Environmental Health Research Tools**

**Ariana La Grenade-Finch, MPH**

Environmental Protection Agency (EPA)’s Office of Research and Development

**Anne Neale, BS**

Environmental Protection Agency (EPA)’s Office of Research and Development

**Ana Rappold, PhD**

Environmental Protection Agency (EPA)’s Office of Research and Development

**Sarah Muskin, MPH**

Environmental Protection Agency (EPA)’s Office of Research and Development

## **Environmental Health Tools Café: Applications from EPA's Office of Research and Development**

**Megan Christian, MPH**

Environmental Protection Agency (EPA) Office of Research and Development

**Jessica Daniel**

Environmental Protection Agency (EPA) Office of Research and Development

**Anne Neale**

Environmental Protection Agency (EPA) Office of Research and Development

**Paul Lemieux, PhD**

Environmental Protection Agency (EPA) Office of Research and Development

## **Duck, Duck: Goose**

**Bridget Sweet, LPD, REHS/RS, CP-FS**

Amtrak

## **Heavy Metal Contamination of Surface Soils in Scrap Metal Recycling Depots in Queens, NY**

**Vimal Soomai, ASP**

NYC Dept. of Environmental Protection

## **Updates to ATSDR's Vapor Intrusion Assessment Approach**

**Tonia Burk, PhD**

ATSDR

Sandra Miller, MS

ATSDR

## **Pueblo City & County, Colorado: Trash Task Force**

**Adam Avina**

Pueblo Department of Public Health and Environment

**Ben Huff**

Pueblo Department of Public Health and Environment

## **Healthy Communities**

### **Denver Methamphetamine Abatement Partnership**

**Antonio Pasquarelli**

Denver Department of Public Health and Environment

**Tara Olson, REHS**

Denver Department of Public Health and Environment

**Brendan Doyle**

Denver Department of Public Health and Environment

## **Environmental House Calls Improve Symptoms of Chemically Intolerant Individuals: Teaching a New Paradigm of Personalized Exposure Medicine**

**Bryan Bayles, PhD, MPH**

Texas A&M University, San Antonio



## **Utilizing Data Management Systems to Increase Interagency Collaboration and Housing Programs' Impact**

**Kiernan Scott**

Mills County Public Health

**Ben Davy, MPH, REHS, CP-FS**

Lincoln-Lancaster County Health Department

## **Identifying the Challenges to Meet the Needs of Rural/Frontier Communities**

**Christopher Walker, MSEH, REHS**

National Environmental Health Association (NEHA)

**Anna Plankey**

National Environmental Health Association (NEHA)

## **Lessons Learned from the Environmental Health and Land Reuse ("Brownfields") Certificate Training Program's Longitudinal Survey**

**Sharon Unkart, PhD**

National Environmental Health Association (NEHA)

**Laurel Berman, PhD**

Agency for Toxic Substances and Disease Registry (ATSDR)

## **A Comparison of Brownfields Redevelopment Mechanisms in the U.S. and Europe**

**Sharon Unkart, PhD**

National Environmental Health Association (NEHA)

**Laurel Berman, PhD**

Agency for Toxic Substances and Disease Registry (ATSDR)

## **Passive Low-Level PFAS Monitoring and Removal from Aqueous Systems using Zeolite Sorbents**

**Nathaniel Sheehan, PE, PMP, REHS**

U.S. Army / University of Kansas

## **Infectious & Vectorborne Diseases**

### **Disinfectant Resistance Update**

**Robert Hulette, RS/RHES, SM(NRCM)**

Vanderbilt University and USAR

### **Control of Monkey Pox Transmission in Confined Settings**

**Robert W. Powitz, MPH, PhD, RS, CP-FS, DABFET, DLAAS**

R.W. Powitz & Associates, P.C.

### **Missouri's COVID-19 Sewershed Surveillance Project**

**Jeff Wenzel**

Missouri Dept of Health and Senior Services

**Melissa Reynolds**

Missouri Dept of Health and Senior Services

## **Multi-purpose Use of Wastewater-based Epidemiology and Its Integration into Public Health**

**Laura Langan, PhD**

Baylor University

**Aaron Bivins, PhD, PE**

Louisiana State University

**Rachel Lee**

Texas Department of State Health Services

**Bryan Brooks, PhD**

Baylor University

### **NCEH**

#### **NCEH: Indoor Wildfire Smoke Guidance for Vulnerable Populations**

**Rad Cunningham, MPH, MPA**

Washington State Department of Health

**Kaitlyn Kelly, MPH**

Washington State Department of Health

**Jackie Busby**

Tacoma Pierce County Health Department

#### **NCEH: Making Waves in Pueblo County: Journey through a MAHC Adoption**

**Autumn Whittaker**

Pueblo Department of Public Health and Environment

**Megan Collins**

Pueblo Department of Public Health and Environment

#### **NCEH: Utilizing Environmental Health Data to Inform Public Pool Regulatory Efforts**

**Judeth Luong, MPH, REHS**

City of Long Beach Dept. of Health and Human Services

**Robert Campbell, MBA**

R.S. Campbell Consulting, Inc.

#### **NCEH: We're Making a Splash Towards the MAHC**

**Remiliza Oriondo, MPH, CP-FS, CPO, CPI**

Guam DPHSS DEH

#### **NCEH: Addressing Health Equity for Private Well Owners Through Drought Education**

**Niki Lajevardi-Khosh, MPH**

Arizona Department of Health Services

#### **NCEH: Using Data Visualization to Target Two Interventions to Protect Private Well Users' Health**

**Deanna Scher, PhD**

Minnesota Department of Health



**NCEH: Tennessee Department of Health: Private Well Water  
and Emergency Response Test Kit Pilot Program**

**Judy Manners, MS**

Tennessee Department of Health, Communicable and Environmental Diseases

**Kristin Dunaway, BA**

Tennessee Department of Health Laboratory Services

**Patrick Leathers, BS**

Tennessee Department of Health Laboratory Services

**NCEH: Enhancing Harmful Algal Bloom Surveillance  
and Outreach in Pennsylvania; a Multifaceted Approach**

**Katie Sneeringer, DrPH**

Pennsylvania Department of Health

**NCEH: New Mexico Post-Wildfire Private Well Testing Response and Evaluation**

**Rose Galbraith, MPH**

New Mexico Department of Health

**Noelle Martinez**

New Mexico Department of Health

**NCEH: Increasing Community Wildfire Smoke Readiness; A Story of Washington Public  
Health Agencies to Distribute Indoor Air Filtration Devices to Vulnerable Individuals**

**Kaitlyn Kelly, MPH**

WA State Department of Health

**NEHA-FDA RFFM Grant Program**

**Presentation Planning for the 2024 Retail Program Standards Symposium**

**Rance Baker**

National Environmental Health Association (NEHA)

**Sharing Our Experiences: What It's Like to Participate in the RFFM Mentorship Program**

**Nicholas Adams, MHS, REHS**

National Association Of County And City Health Officials (NACCHO)

**What's Mentorship All About: Learn About the NEHA-FDA RFFM  
RPS Mentorship Program Through Speed Dating with NACCHO**

**Nicholas Adams, MHS, REHS**

National Association Of County And City Health OFFICIALS (NACCHO)

**Tiara Smith**

National Association Of County And City Health Officials (NACCHO)

### Overview of Tools, Resources, and Trainings Developed for the Private Water Network

**Reem Tariq, MSEH**

National Environmental Health Association (NEHA)

**Jesse Bliss, MPH**

National Environmental Health Association (NEHA)

**Raquel Sabogal, MSPH**

Centers For Disease Control & Prevention (CDC) - NCEH Water, Food and Environmental Health Services Branch

### Identifying Arsenic and Saltwater Intrusion Along with Water Quality Testing in Drinking Water Wells in Pierce County, Washington

**Joshua Hird**

Tacoma-Pierce County Health Department

**Michelle Harris, REHS**

Tacoma-Pierce County Health Department

**Kelly Racke, REHS, WDM3, CCS, WTP0-IT**

Tacoma-Pierce County Health Department

### Adopting ANSI/PHITA/ICC-2 Standard as a Companion to the International Swimming Pool and Spa Code

**Dennis Berkshire, NSF Standards 50 Board Member**

Aquatic Design Group

**John Mason, REHS**

Deschutes County in Bend, Oregon

### Interim CDC Guidance for Surf Venues

**Michele Hlavsa, RN, MPH**

U.S. Centers for Disease Control & Prevention

### Interim Guidance for Safe Operation of Artificial Swimming Lagoons

**Joe Laco, REHS/RS, CPO**

Centers For Disease Control & Prevention (CDC) - NCEH

**Dewey Case, CPO**

CMAHC

### Systemic Failures Leading to Outbreaks of Recreational Water Illnesses

**Roy Vore, PhD, CPO I, CPO, CPI**

Vore & Associates

**Jenn Huang, BS**

ApothaQuali Solutions, LLC

**Tom Kuechler, PhD**

ApothaQuali Solutions, LLC

### Snapshot of CDC's Efforts to Build Legionella Prevention and Control Efforts in the United States

**Nakia Clemmons, MPH, REHS, CIC**

Centers For Disease Control & Prevention (CDC)

**Janie Hils, MPH**

Centers for Disease Control & Prevention (CDC)/ORISE



## **Workforce & Leadership**

### **In the Footsteps of Heroes**

**Bob Custard, REHS, CP-FS, CPO-I**

Jefferson County (WV) Health Department

### **Conflict De-escalation**

**Alicia Love, MPH, RS**

Montana Department of Livestock

### **Developing Online and/or Hybrid Internships for Undergraduates that are Meaningful for Students and Beneficial to Providers**

**Anne Marie Zimeri, PhD**

University of Georgia

### **Living through Leadership: A Beginner's Guide**

**Karla Shoup, MPH, REHS**

Southern Nevada Health District

### **Using the Leadership Academy to Strengthen the Environmental Health Workforce**

**Christopher Walker, MSEH, REHS**

National Environmental Health Association (NEHA)

### **Improving Communication with Environmental Health Staff to Ensure their Engagement and Success in the Training Program**

**Cesia Estrada, BS, RS**

Pima County Health Department, Consumer Health & Food Safety Division

**Amanda Anderson, MPH, RS**

Pima County Health Department - Consumer Health & Food Safety Division

### **Collaboration & Communication: Is Everyone Feeling the Love During Assessments/Inspections?**

**Traci Michelson, REHS, CP-FS**

National Environmental Health Association (NEHA) Business & Industry Affiliate

### **Real Life Stories of Success Through Corporation & Understanding Between Industry & Regulators**

**Michael Crea, RS**

Florida Environmental Health Association

### **The Impact of the National Environmental Public Health Internship Program (NEPHIP) Through Success Stories**

**Jesse C. Bliss, MPH**

National Environmental Health Association (NEHA)

**Adrienne Gothard, MPH**

National Environmental Health Association (NEHA)

August 3rd, 2023 (Thursday)

## Climate & Health

### Extreme Heat Planning in the Pacific Northwest: Challenges, Successes and Tools

**Jackie Busby, BS**

Tacoma-Pierce County Health Department

**Cindy Haverkamp, BS, MTL**

Tacoma-Pierce County Health Department

**Judy Olsen, BA, REHS, CAE**

Tacoma-Pierce County Health Department

**Marnie Boardman, MPH**

Washington State Department of Health

## Data & Technology

### Bring Your Own Data (BYOD): Intro to Excel for Your Data Storytelling

**Tim Callahan, MPH**

Georgia Department of Public Health

### Compliance 2.0: Catching Food Establishments Doing Something Right (1)

**Mark Parker**

SansWrite

### Hartford's Quest for Automation to Make City Departments More Efficient and Responsive (1)

**Elizabeth Kavanah, MS, RS/REHS**

City of Hartford, CT Department of Health and Human Services

### Using Reporting Software to Automate Regulatory Operations (1)

**Adria Zern, MPH**

New York City Department of Health and Mental Hygiene

**Darren Ifurung**

New York City Department of Health and Mental Hygiene

**Jeffrey Lee**

New York City Department of Health and Mental Hygiene

**Wendy McKelvey, PhD**

New York City Department of Health and Mental Hygiene

### On-Site, At Home: Creating Immersive Environments Using Simulations (1)

**Anna Floyd, PhD**

National Environmental Health Association (NEHA)

**Nicholas Ogg**

National Environmental Health Association (NEHA)

### Virtual Course Delivery: Creating an Effective Learning Environment (1)

**Nicole Kinash**

National Environmental Health Association (NEHA)

## Emergency Preparedness & Response

### Wildfire Response Guide for Environmental Public Health Professionals ((1))

Christopher Walker, MSEH, REHS

National Environmental Health Association (NEHA)

Gina Bare

National Environmental Health Association (NEHA)

Lane Drager

### Systematically Identifying and Evaluating Strategies for Strengthening Public Health System Resilience ((1))

Benjamin Ryan, PhD, MPH, REHS

Baylor University

Mayumi Kako, PhD, RN

Hiroshima University

Matthew Fendt, PhD

Baylor University

Tim Hatch, MPA, REHS

Alabama Department of Public Health

Alicia Fontenot

Baylor University

### Trends and Opportunities from Concurrent Disasters Exercise at Five State and County Health Departments

Alex Poniatowski, MS

Centers For Disease Control & Prevention (CDC) / ATSDR

James Gooch, MPH, REHS, HAZWOPER

Centers For Disease Control & Prevention (CDC) / ATSDR

### Responding to Hurricane Ian in Central Florida: Lessons Learned ((1))

Cynthia Goldstein, MPH, REHS

Florida Department of Health in Polk County

### Psychological First Aid (PFA) in a Disaster Event ((1))

Bruce Nisberg, MS, CPM

State of Nevada Cannabis Compliance Board

## Focused Populations

### Projections and Quantifications of Potential Climate Change Impacts on Children's Health: A Series of Analyses ((1))

Caitlin Gould

U.S. Environmental Protection Agency

## **Health Equity and Environmental Justice in American Indian and Alaska Native Communities ((p))**

**Thyra Kimbell**

National Environmental Health Association (NEHA)

**Jesse Bliss**

National Environmental Health Association (NEHA)

## **Traditional Indigenous Foods: The Role of Environmental Health Professionals in Increasing Access and Decolonizing Food Safety ((p))**

Casey Neathway, BSc, BTech

First Nations Health Authority

Kelsie Dale, BSc, BEH, MPH

Saskatchewan Ministry of Health

## **Food Safety**

### **Promoting a Food Safety Culture at LinkedIn Headquarter Kitchens ((p))**

Annamaria Barajas, CFSP, ServSafe

Cambro Mfg

Alicia Jenish-Mc Carron, HACCP

Good Eating Company for LinkedIn

### **The Critical Ingredient in Food Safety ((p))**

Darin Detwiler, Chair of NEHA's Food Safety Program Committee

Northeastern University

### **State Food Safety Legislation ((p))**

Doug Farquhar, JD

National Environmental Health Association (NEHA)

### **Multi Serotype Salmonella Outbreak: In an International Grocery Store**

Talisha Bacon, MPH, LEHS

Utah Department of Agriculture and Food

Jessica Coats, LEHS

Utah Department of Agriculture and Food

Andrea Gamble, MS, LEHS

Salt Lake County Health Department

### **Have You Been Cleaning Wrong All Along:**

### **How Overlooking the Cleaning Step Hurts the Sanitation Goals of the Food Code**

Juan Goncalves, CP-FS, ServSafe

Procter & Gamble

### **Shark Attacks and Ice Cream Sales**

Patrick Guzzle, MA, MPH, REHS

National Restaurant Association



## **Challenges of a Municipal Health Department Navigating Specialized Processing at Retail Guidance Under FDA 3-502.11 and 3-502.12**

**Jim Donovan, REHS**

City of Minneapolis Health Department

## **FDA's Retail Food Risk Factor Study: Findings from the 2017-2018 Restaurant Data Collection Period**

**Michael Nordos, RS**

Food and Drug Administration

## **Successes of the Past 10 Years: 10 Year Evaluation of NACCHO Retail Program Standards Mentorship Program**

**Nicholas Adams, MHS, REHS**

National Association Of County And City Health Officials (NACCHO)

**Daniel Pagan**

National Association Of County And City Health Officials (NACCHO)

**Donna Wanucha, REHS**

US Food & Drug Administration (FDA)

## **General Environmental Health**

### **Body Art Model Code (BAMC): Understand the Update Process and How to Utilize It**

**Christl Tate**

National Environmental Health Association (NEHA)

**Sadie Shervheim**

National Environmental Health Association (NEHA)

### **Body Art: Meeting the Needs of the Environmental Health Workforce**

**Christl Tate**

National Environmental Health Association (NEHA)

**Sadie Shervheim**

National Environmental Health Association (NEHA)

### **Everything You Need to Know about Cosmetic Tattooing**

**Christl Tate**

National Environmental Health Association (NEHA)

### **Old Ways and New Approaches: Problem Solving for the EH Generation**

**Michele Samarya-Timm, MA, HO, MCHES, REHS, CPH, DLAAS**

National Environmental Health Association (NEHA)

## **Healthy Communities**

### **Development of a Collaborative Healthy Homes Program Using Health in All Policy Strategies** (1)

**Gina Bare, RN**

National Environmental Health Association (NEHA)

**Bill Hayes**

BCPH

**Patricia Dooley-Strappelli**  
BCPH

### **Updates from the ICC/NEHA Pandemic Task Force** (1)

**Niki Lemin**  
National Environmental Health Association (NEHA)

### **Prenatal Care, Diapers, and ... Lead Test Kits?: The Innovative Use of Community Health Workers** (1)

**Sarah Briley**  
Union Hospital's Richard G. Lugar Center for Rural Health  
**Charla Cline**  
Chances and Services for Youth

## **Infectious & Vectorborne Diseases**

### **Infection Control and Biosafety for the Environmental Health Professional**

**Brandon Hulette, RS/RHES, SM(NRCM)**  
Vanderbilt University  
**Lauren Richardson, DVM, MPH**  
Merrick and Co & USAR

### **Legionnaires' Disease Outbreaks Aboard Vessels:**

#### **Toolkit to Develop Environmental Assessment Questionnaire and Choose Sample Locations**

**LCDR Amanda Schaupp, MPH, REHS, CP-FS, CCFS**  
Food and Drug Administration  
**Joseph Morin, MPA, REHS**  
Food and Drug Administration

### **Missouri Tick-Borne Disease Story Map**

**Scott Patterson, BSE, BS**  
Missouri Department of Health and Senior Services, Bureau of Environmental Epidemiology  
**Elizabeth Semkiw, PhD**  
MO Department of Health and Senior Services

## **NCEH**

### **NCEH: Restaurant Characteristics, Policies, and Practices Related to Salmonella Outbreak Magnitude and Duration**

**E. Rickamer Hoover, PhD, MS**  
Centers For Disease Control & Prevention (CDC)  
**Carolyn Crisp, PhD, MPH**  
Centers For Disease Control & Prevention (CDC)

### **NCEH: Using Restaurant Inspection Data to Answer Food Safety Questions**

**Adam Kramer, ScD, MPH, RS, CFS**  
Centers for Disease Control & Prevention (CDC)

## **NCEH: Food Safety Culture; Three Studies Reveal Barriers and Facilitators to Implementation**

**Adam Kramer, ScD, RS**

Division of Environmental Health Science and Practice, Centers for Disease Control & Prevention (CDC)

**Lauren DiPrete, MPH, REHS**

Environmental Health, Southern Nevada Health District

**Nicole Hedeem, MS, RS**

Environmental Health Division, Minnesota Department of Health

## **NCEH: Environmental Sampling; Oh, The Places You'll Go**

**D.J. Irving, MPH, REHS**

Tennessee Department of Health

## **NCEH: Foodborne Illness Outbreaks at Retail Establishments; National Environmental Assessment Reporting System, 2017–2019**

**Erin Moritz, MS, PhD**

Centers for Disease Control & Prevention (CDC)

## **NCEH: A Longitudinal Analysis of Contributing Factors of Foodborne Illness Outbreaks**

**Meghan Holst**

Centers for Disease Control & Prevention (CDC)

**Beth Wittry, LCDR**

Centers for Disease Control & Prevention (CDC)

## **NCEH: Acceptability of Incorporating a Community Social Vulnerability Variable in a National Retail Food Safety Surveillance System; Feedback from State and Local Jurisdictions — September 2022**

**Carolyn Crisp, PhD, MPH**

Centers For Disease Control & Prevention (CDC)

**Erin Moritz, PhD, MS**

Centers For Disease Control & Prevention (CDC)

## **NCEH: A Sex Equity Review of NYC Mobile Food Vending; What are the Barriers to Women Vending?**

**Adria Zern, MPH**

New York City Department of Health and Mental Hygiene

**Wendy McKelvey, PhD**

New York City Department of Health and Mental Hygiene

**Jean-Baptiste Rudatsikira, JD**

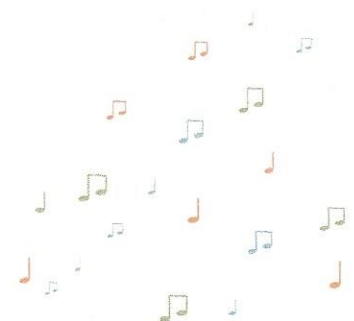
New York City Department of Health and Mental Hygiene

**Eugene Massey, MPH**

New York City Department of Health and Mental Hygiene

**Corinne Schiff, JD**

New York City Department of Health and Mental Hygiene



## **NCEH: Updates from CDC and FDA; Why do Norovirus Outbreaks Continue to Occur in Retail Food Establishments and What can we do to Prevent Them?**

**Jessica Otto, MPH, DAAS, REHS, CP-FS**

Food and Drug Administration

**Beth Wittry, MPH, REHS, CP-FS**

Centers for Disease Control & Prevention (CDC)

## **NEHA-FDA RFFM Grant Program**

### **Retail Program Standards Symposium 2022 Recap**

**Rance Baker**

National Environmental Health Association (NEHA)

**Elizabeth Grenier**

National Environmental Health Association (NEHA)

### **About the NEHA-FDA RFFM Grant Program: Year 2 Vision & Success**

**Rosie DeVito, MPH**

National Environmental Health Association (NEHA)

**David Dyjack, DrPH, CIH**

National Environmental Health Association (NEHA)

**Maribeth Niesen**

US Food & Drug Administration (FDA)

**Manjit "Mike" Randhawa, MD, MPH**

National Environmental Health Association (NEHA)

### **Applying for a CY 2024 NEHA-FDA RFFM Grant**

**Art Johnstone**

National Environmental Health Association (NEHA)

**Rance Baker**

National Environmental Health Association (NEHA)

**Joetta DeFrancesco**

National Environmental Health Association (NEHA)

**Chelsea Gridley-Smith, PhD, Biomedical Sciences**

National Association of County and City Health Officials (NACCHO)

## **Water**

### **Backflow Prevention Devices and Their Technical Requirements**

**Sean Cleary**

IAPMO

### **How Effective are Small Flow Treatment Facilities in Erie County, Pennsylvania?**

**Breanna Adams, REHS/RS**

Erie County Department of Health

## **ASSE 1087, Performance Requirements for Commercial and Food Service Water Treatment Equipment Utilizing Drinking Water**

**John Watson**

IAPMO

**Brian Donda**

IAPMO

## **Workforce & Leadership**

### **Developing Effective Trainers Through Competency-Based Learning Strategies**

**LCDR Samuel Frank, MPH, REHS**

Indian Health Service

**LT Braden Hickey, MPH, REHS, CPH**

Indian Health Service

**CDR Jeffrey Conner, MPH, REHS**

Indian Health Service

### **Environmental Health Department Structure: Core Services and Optimal Staffing Benchmarks**

**Gina Bare**

National Environmental Health Association (NEHA)

**Thuy Kim, MPH**

University of Minnesota School of Public Health

**Marijke Decuir, MPH, REHS**

Minnesota Department of Health

### **Where Are All My People: A Session to Discover Ways to Address Current and Future Workforce Challenges**

**Traci Michelson, REHS, CP-FS**

Partners with a Common Purpose

### **Career Pathing for Environmental Health Professionals**

**TBD - Diplomate, REHS/RS, DAAS**

American Academy of Sanitarians

## **Closing Session**

### **Closing Session (1)**

**Frank Yiannis**

Food Safety Executive

Previous Deputy Commissioner, Food Policy & Response, US Food & Drug Administration (FDA)

## July 29 – 31, 2023 (Preconference)

### Body Art

#### Body Art Facility Inspector Training

Sunday, July 30 and Monday, July 31

8 am – 4 pm daily

Fee: \$150 member/\$200 non-member

### Climate

#### Climate for Health Ambassador Training

Monday, July 31

8 am – 12 pm

Fee: \$0, Pre-registration is required

#### Climate for Health Ambassador Debrief

Monday, July 31

2 – 4 pm

Fee: \$0, Pre-registration is required

### Communication

#### Communication: Influencing Inspection Outcomes

Monday, July 31

12:30 – 4:30 pm

Fee: \$0, Pre-registration is required

### Credentials

#### Registered Environmental Health Specialist/Registered Sanitarian Credential Review Course

Saturday, July 29 – Monday, July 31

8 am – 5 pm Saturday and Sunday, 8 am – 12 pm Monday

Fee: \$549 member/\$649 non-member, AEC Registration Bundle Price: \$1029 member/\$1,129 non-member

#### Certified Professional - Food Safety Credential Review Course

Saturday, July 29 and Sunday, July 30

8 am – 5 pm daily

Fee: \$449 member/\$549 non-member AEC Registration Bundle Price: \$929 member/\$1,029 non-member

### Data

#### Tools for Working Better, Smarter, Cheaper as you Utilize Data and Planning to Ensure Environmental Health Program Success: A Workshop for Current and Aspiring Environmental Health Leaders

Monday, July 31

12:30 – 4:30 pm

Fee: \$0, Pre-registration is required

## **Food Safety**

### **NEHA and FDA National Retail Food Regulatory Program Standards Self-Assessment and Verification Audit Workshop**

Saturday, July 29 – Monday, July 31

Fee: \$140 for all registrants

## **Land Reuse**

### **Environmental Health and Land Reuse Immersion Training**

Saturday, July 29 – Monday, July 31

8 am – 5 pm Saturday and Sunday, 9 am – 1 pm Monday

Fee: \$25 member/\$50 non-member

## **Leadership**

### **Affiliate Leadership Workshop**

Monday, July 31

8 am – 12 pm

Fee: \$0, Pre-registration is required

## **Water Quality**

### **Council for the Model Aquatic Health Code: Certified Pool Operator Fusion Course**

Sunday, July 30

8 am – 5 pm

Fee: \$350

### **Council for the Model Aquatic Health Code: Certified Public Health Pool Inspector**

Monday, July 31

8 am – 5 pm

Fee: \$200

### **Private Water Network: Building Capacity through Partnerships and Collaboration for Safer Private Wells**

Monday, July 31

8:30 – 11:30 am

Fee: \$0, Pre-registration is required

## AEC Schedule at a Glance



The 2023 AEC will provide the opportunity for attendees to earn CE's in a variety of educational topic areas. All times are Central Time, and the schedule and times are subject to change. Find additional details about specific events at AEC Events ([/aec-events](#)).

### Preconference Offerings: July 29 – 31

- In-Person Preconference Workshops and Trainings ([/aec-preconference](#)): 8 am – 5 pm

### Conference Day 1: July 31

- Keynote Address ([/aec-featured-sessions](#)) 5 – 6 pm
- Exhibition Grand Opening ([/aec-events](#)): 6 – 8 pm

## Conference Day 2: August 1

- Grand Educational Session Kickoff (/aec-featured-sessions) 8 – 9 am
- Concurrent Educational Sessions  
(<https://www.neha.org/Images/resources/23%20Draft%20Agenda.pdf>): 9 am – 4 pm
- Exhibition: 9:30 am – 4 pm
- Keynote Address (/aec-featured-sessions): 4 – 5 pm
- Environmental Health Photo Exhibit (/aec-events): 5 – 6:30 pm
- French Quarter Pest Tour (/aec-events): 6 - 7 pm or 7:30 - 8:30 pm

## Conference Day 3: August 2

- Town Hall Assembly (/aec-events): 7 – 8 am
- Grand Educational Session Kickoff (/aec-featured-sessions): 8 – 9 am
- Concurrent Educational Sessions  
(<https://www.neha.org/Images/resources/23%20Draft%20Agenda.pdf>): 9 am – 5 pm
- Featured Session, Sound Check (/aec-featured-sessions): 12:10 – 12:50 pm
- Raising Your Voice Networking Event (/aec-events): 6:30 – 8:30 pm

## Conference Day 4: August 3

- Concurrent Educational Sessions  
(<https://www.neha.org/Images/resources/23%20Draft%20Agenda.pdf>): 8 – 11:20 am
- Closing Session: 11:30 am – 1 pm