



REVIEW BY FORT BEND COUNTY
COMMISSIONERS COURT

Fort Bend County
Engineering Department
301 Jackson Suite 401
Richmond, Texas 77469
281.633.7500
Permits@fortbendcountytx.gov

☐

Right of Way Permit

☒

Commercial Driveway Permit

Permit No: 2022-58034

The following "Notice of Proposed Cable, Conduit, and/or Pole Line activity in Fort Bend County" and accompanying attachments have been reviewed and the notice conforms to appropriate regulations set by Commissioner's Court of Fort Bend County, Texas.

(1) COMPLETE APPLICATION FORM:

☒
☒
☒

- a. Name of road, street, and/or drainage ditch affected.
b. Vicinity map showing course of directions
c. Plans and specifications

(2) BOND:

☐

County Attorney, approval when applicable.

☒

Perpetual bond currently posted.

Bond No: [REDACTED] Amount: \$65,000.00

☐

Performance bond submitted.

Bond No: Amount:

☐

Cashier's Check

Check No: Amount:

(3) DRAINAGE DISTRICT APPROVAL (WHEN APPLICABLE):

Drainage District Approval

Date

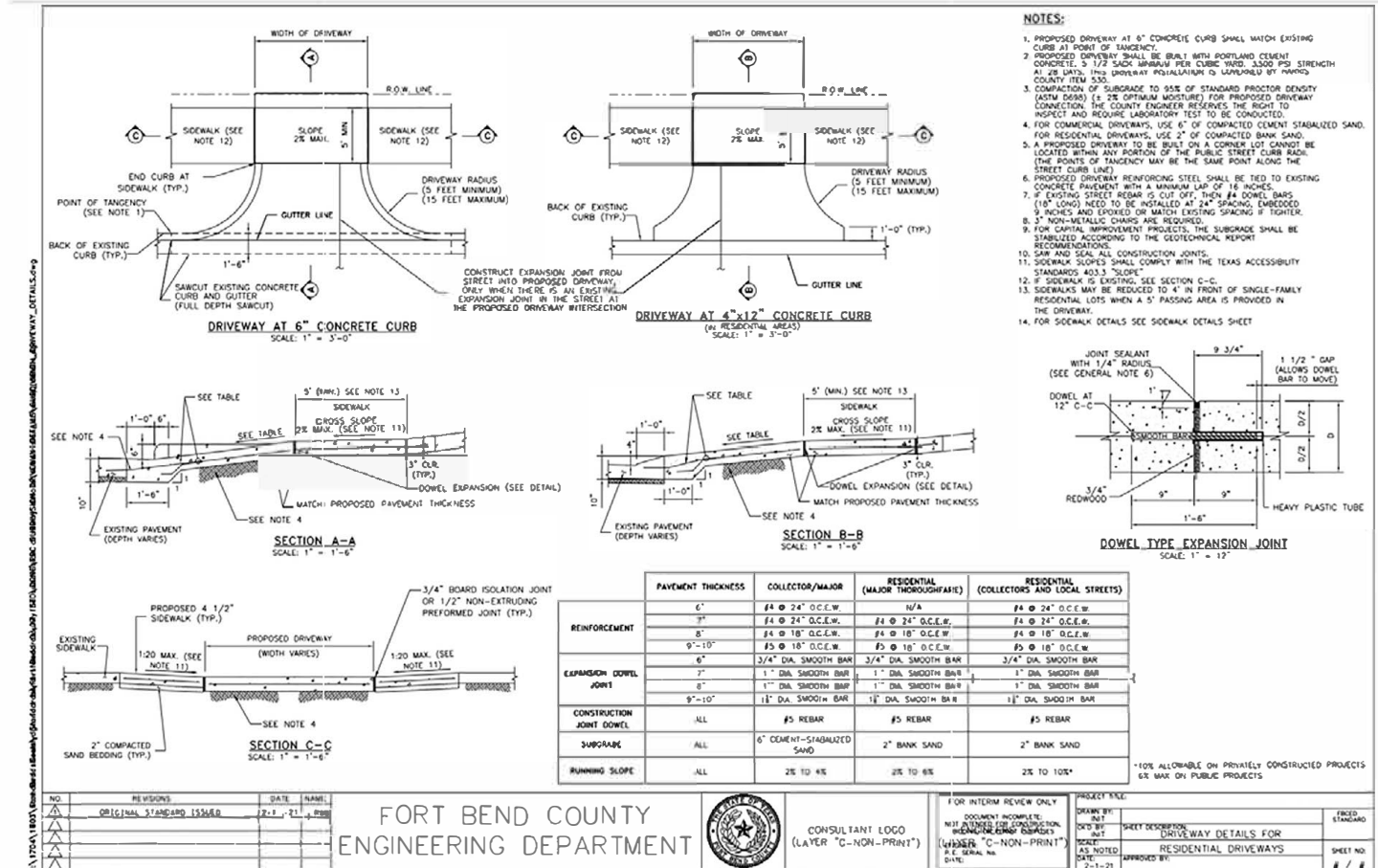
We have reviewed this project and agree it meets minimum requirements.

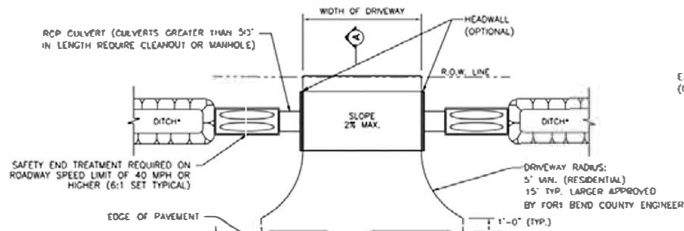


Permit Administrator

10/31/2022

Date

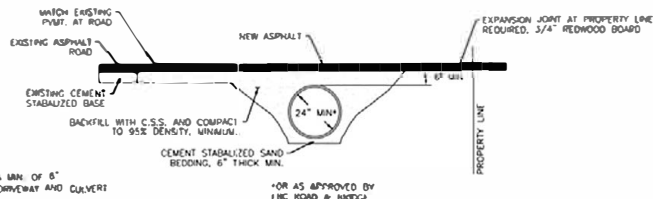




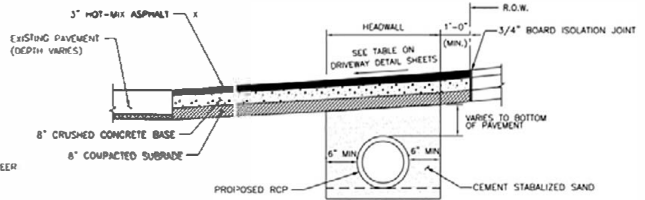
OPEN DITCH DRIVEWAY

*DITCH IS TO HAVE 4:1 SLOPE

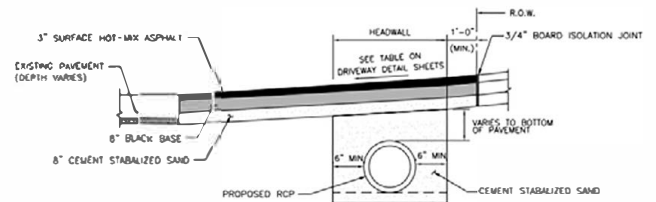
MINIMUM ROAD REQUIREMENTS - DRIVEWAYS		
	LOCAL	COLLECTOR/MAJOR
RESIDENTIAL	5'3"	-
COMMERCIAL	10'0"	2- 3'



ASPHALT APRON DETAIL - DRIVEWAY PROFILE FOR CULVERT DRAINAGE



SECTION A-A FOR RESIDENTIAL DRIVEWAYS



SECTION A-A FOR COMMERCIAL DRIVEWAYS

NO.	REVISIONS	DATE	NAME	FOR INTERIM REVIEW ONLY	PROJECT TITLE	FIGURE
1	ORIGINAL STANDARD ISSUED	2-1-21	RWB	NOT A REVIEW FOR CONSTRUCTION. NO CHANGES REQUIRED. (LAYER "C-NON-PRINT")	TURN LANE & MEDIAN OPENING DETAIL	FIGURE 1
2				DATE: 2-1-21	APPROVED BY:	SHEET NO. 1 OF 1

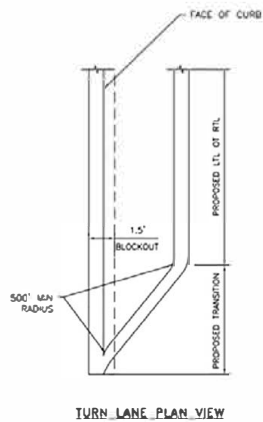
FORT BEND COUNTY
ENGINEERING DEPARTMENT



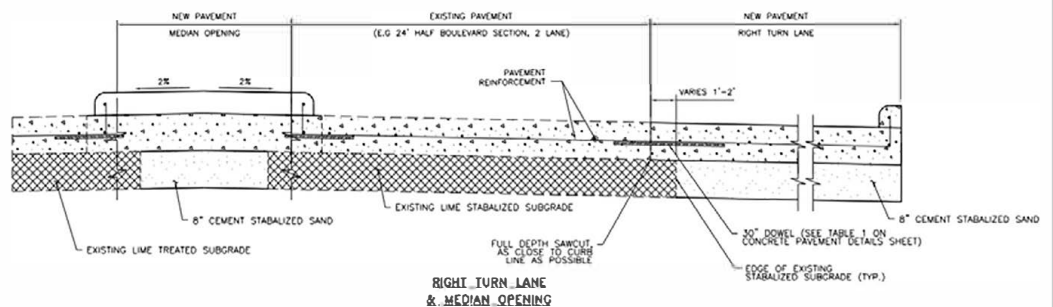
CONSULTANT LOGO
(LAYER "C-NON-PRINT")

FOR INTERIM REVIEW ONLY
NOT A REVIEW FOR CONSTRUCTION.
NO CHANGES REQUIRED.
(LAYER "C-NON-PRINT")
DATE: 2-1-21

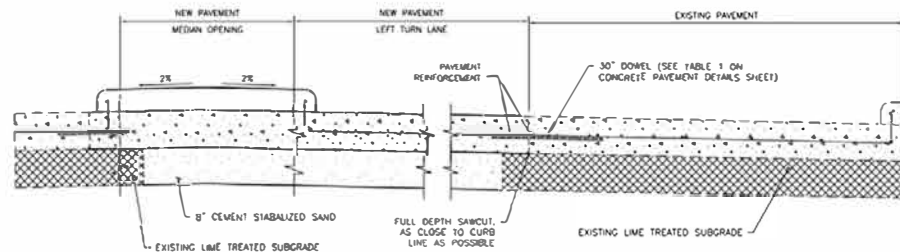
PROJECT TITLE	FIGURE
TURN LANE & MEDIAN OPENING DETAIL	FIGURE 1
DATE: 2-1-21	APPROVED BY:
SHEET NO. 1 OF 1	



TURN LANE PLAN VIEW



RIGHT TURN LANE & MEDIAN OPENING



LEFT TURN LANE & MEDIAN OPENING

NOTES

- FOR CONCRETE PAVEMENT REINFORCEMENT AND JOINT DETAILS, SEE CONCRETE PAVEMENT DETAILS SHEET

NO.	REVISIONS	DATE	NAME	FOR INTERIM REVIEW ONLY	PROJECT TITLE	FIGURE
1	ORIGINAL STANDARD ISSUED	2-1-21	RWB	NOT A REVIEW FOR CONSTRUCTION. NO CHANGES REQUIRED. (LAYER "C-NON-PRINT")	TURN LANE & MEDIAN OPENING DETAIL	FIGURE 1
2				DATE: 2-1-21	APPROVED BY:	SHEET NO. 1 OF 1

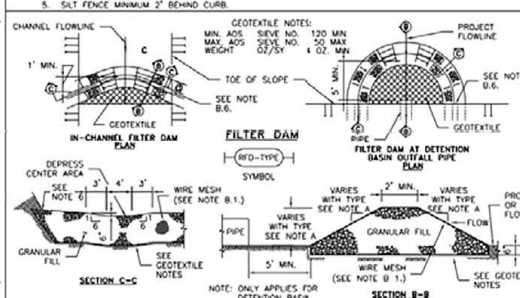
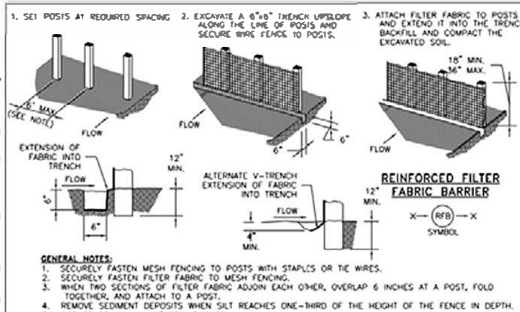
FORT BEND COUNTY
ENGINEERING DEPARTMENT



CONSULTANT LOGO
(LAYER "C-NON-PRINT")

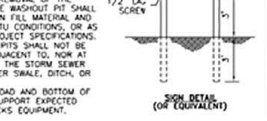
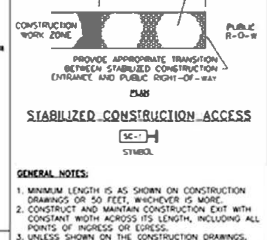
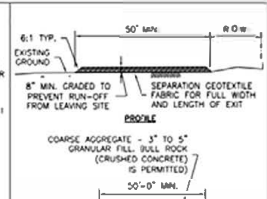
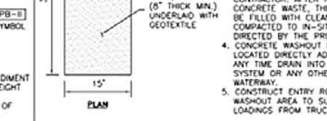
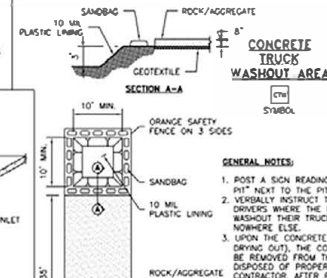
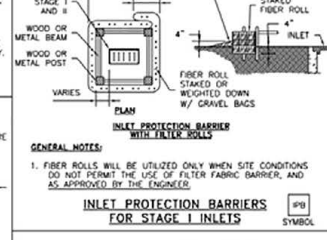
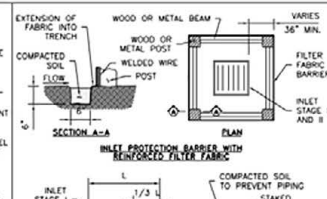
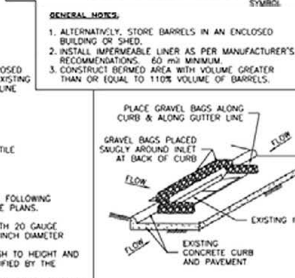
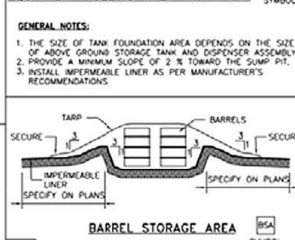
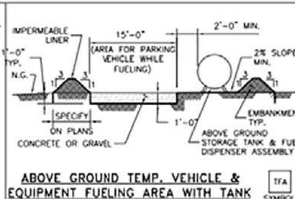
FOR INTERIM REVIEW ONLY
NOT A REVIEW FOR CONSTRUCTION.
NO CHANGES REQUIRED.
(LAYER "C-NON-PRINT")
DATE: 2-1-21

PROJECT TITLE	FIGURE
TURN LANE & MEDIAN OPENING DETAIL	FIGURE 1
DATE: 2-1-21	APPROVED BY:
SHEET NO. 1 OF 1	



- A. TYPES OF FILTER DAMS**
1. TYPE 1 (NON-REINFORCED)
 2. TYPE 2 (REINFORCED)
 3. TYPE 3 (REINFORCED)
 4. TYPE 4 (GABION)
 5. TYPE 5. AS SHOWN ON THE PLANS.

- B. CONSTRUCT FILTER DAMS ACCORDING TO THE FOLLOWING CRITERIA UNLESS SHOWN OTHERWISE ON THE PLANS.**
1. TYPE 2 AND 3 FILTER DAMS: SECURE WITH 20 GAUGE GALVANIZED WOVEN WIRE MESH WITH 1 INCH DIAMETER HEXAGONAL OPENINGS.
 2. PLACE GRANULAR FILL ON THE WIRE MESH TO HEIGHT AND SLOPES SHOWN ON PLANS OR AS SPECIFIED BY THE ENGINEER.
 3. 5-8 INCHES FOR ROCK FILTER DAM TYPES 1, 2, AND 4.
 4. 4-8 INCHES FOR ROCK FILTER DAM TYPE REFER TO GRANULAR FILL IN SPECIFICATION SECTION NO. 02378 RIPRAP AND GRANULAR FILL.
 5. FOLD WIRE MESH AT UPSTREAM SIDE OVER GRANULAR FILL AND TIGHTLY SECURE TO ITSELF ON THE DOWNSTREAM SIDE USING WIRE TIES OR HOG RINGS.
 6. IN STREAM: SECURE OR STAKE MESH TO STREAM BED PRIOR TO AGGREGATE PLACEMENT.
 7. SEE HICFD SPECIFICATION SECTION NO. 02364-FILTER DAMS.
 8. EMBED ONE FOOT MINIMUM INTO SLOPE AND RAISE ONE FOOT HIGHER THAN CENTER OF DEPRESSED AREA AT SLOPE.



NO.	REVISIONS	DATE	NAME
1	ORIGINAL STANDARD ISSUED	2-1-21	KWB

**FORT BEND COUNTY
ENGINEERING DEPARTMENT**



CONSULTANT LOGO
(LAYER "C-NON-PRINT")

FOR INTERIM REVIEW ONLY
DOCUMENT INCOMPLETE
NOT SUITABLE FOR CONSTRUCTION
INDICATED BY CHANGES
(LAYER "C-NON-PRINT")
DATE: 2-1-21

PROJECT TITLE:	STORM WATER POLLUTION PREVENTION PLAN DETAILS
DRAWN BY:	SPW/PT
CHECKED BY:	ANT
DATE:	2-1-21
APPROVED BY:	
PROJECT NO.:	
SHEET NO.:	11