

THE STATE OF TEXAS §
 §
COUNTY OF FORT BEND §

ORDER OF INCLUSION

RECITALS

WHEREAS, on this day, Fort Bend County Assistance District No. 10 (the “District”) received and considered the Petition and Consent by Landowners to the Inclusion of Real Estate to the District, signed and brought forward by Fort Bend County, (the “Petitioner”); and

WHEREAS, the District finds that the Petitioner is the owner of all or a majority of land in the area to be included in the District, being a certain segment of roadway situated in Fort Bend County, Texas (the “Annexation Area”), described in the attached Exhibit A; and

WHEREAS, the District also finds that there are no registered voters in the Annexation Area and therefore, no election is required; and

WHEREAS, Section 387.003(f) of the Texas Local Government Code permits the District by order, to include an area in the District on receipt of a petition or petitions signed by the owner or owners of a majority of the land in the area to be included in the District; and

NOW THEREFORE, BE IT ORDERED BY THE BOARD OF DIRECTORS OF THE DISTRICT THAT:

Section 1: The Annexation Area is hereby included within the boundaries of the District by annexation, eligible for the functions permitted to be performed by the District, including but not limited to the construction, maintenance, or improvement of roads or highways.

Section 2: This Order is effective immediately upon passage.

ADOPTED this ____ day of _____, 2022.

**FORT BEND COUNTY ASSISTANCE
DISTRICT NO. 10**

By: _____

KP George, County Judge

Date: _____

ATTEST:

By: _____

Laura Richard, County Clerk

EXHIBIT A

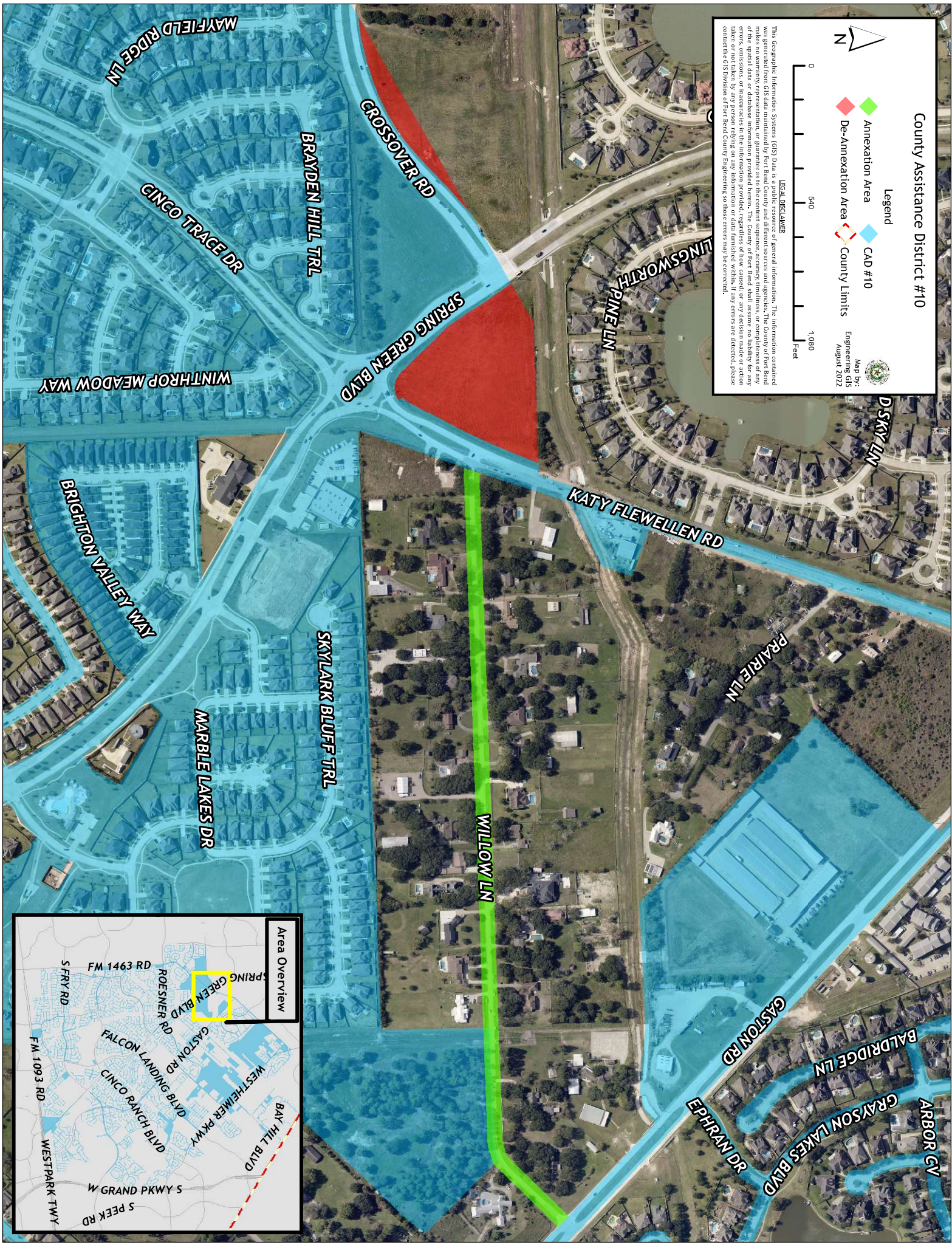
County Assistance District #10



- Legend
- Annexation Area (green diamond)
 - De-Annexation Area (red diamond)
 - CAD #10 (blue diamond)
 - County Limits (yellow dashed line)

Map By:
Engineering, GIS
August 2022

LEGAL DISCLAIMER
This Geographic Information Systems (GIS) Data is a public resource of general information. The information contained was generated from GIS data maintained by Fort Bend County and different sources and agencies. The County of Fort Bend does not warrant, represent, or guarantee the accuracy, reliability, or completeness of the information. The County of Fort Bend is not responsible for any errors, omissions, or inaccuracies in the information provided, regardless of how caused, or any decision made or action taken or not taken by any person relying on any information or data furnished within. If any errors are detected, please contact the GIS Division of Fort Bend County Engineering so those errors may be corrected.



Area Overview

