

PLAT RECORDING SHEET

PLAT NAME: Jordan Ranch Street Dedication No. 11

PLAT NO: _____

ACREAGE: 9.111

LEAGUE: H.&T.C.R.R. CO. Survey, Section 105

ABSTRACT NUMBER: A-261

NUMBER OF BLOCKS: 0

NUMBER OF LOTS: 0

NUMBER OF RESERVES: 0

OWNERS: Fort Bend Jordan Ranch LP

(DEPUTY CLERK)

X:\2100\214100270_20_51 (Sub 11) Plat.dwg [Layout2] Plotted May 12, 2023 at 9:54am by rlander (User Saved by rlander)

BEING 9.111 acres of land in the H.&T.C.R.R. Co. Survey Section 105, Abstract Number 261 Fort Bend County, Texas and being a portion of the 1352.43 acre tract described in the deed from The Massimo Fabio Silvestri Irrevocable Trust and The Rocco Paolo Silvestri Irrevocable Trust to Fort Bend Jordan Ranch LP recorded under File Number 2015027940 in the Official Public Records of Fort Bend County, Texas and being more particularly described by metes and bounds as follows with bearings based on the Texas Coordinate System of 1983, South Central Zone:

COMMENCING at a 3/4-inch iron rod found for the most southerly southeast corner of said 1352.43 acre tract, from which a 1/2-inch iron pipe with cap stamped "Kalkomey" bears North 86° 18' 32" West - 2,736.49 feet;

THENCE North 56° 39' 05" West - 1,237.63 feet, across said 1352.43 acre tract, to a 5/8-inch iron rod with cap stamped "IDS" set for the southeast corner and **POINT OF BEGINNING** of the herein described tract, and being the beginning of a curve to the left;

THENCE, across said 1352.43 acre tract, the following courses, and distances:

in a westerly direction, with said curve to the left, having a radius of 120.00 feet, a central angle of 31° 08' 27", a chord bearing and distance of North 86° 26' 22" West - 64.42 feet, and an arc distance of 65.22 feet, to a 5/8-inch iron rod with cap stamped "IDS" set for the end of said curve;

North 12° 00' 35" West - 60.00 feet to a 5/8-inch iron rod with cap stamped "IDS" set for the beginning of a non-tangent curve to the left;

in a northeasterly direction, with said curve to the left, having a radius of 25.00 feet, a central angle of 76° 12' 37", a chord bearing and distance of North 39° 53' 06" East - 30.86 feet, and an arc distance of 33.25 feet, to a 5/8-inch iron rod with cap stamped "IDS" set for the end of said curve;

North 01° 46' 48" East - 60.22 feet to a 5/8-inch iron rod with cap stamped "IDS" set for the beginning of a curve to the right;

in a northerly direction, with said curve to the right, having a radius of 1230.00 feet, a central angle of 01° 02' 54", a chord bearing and distance of North 02° 18' 15" East - 22.51 feet, and an arc distance of 22.51 feet, to a 5/8-inch iron rod with cap stamped "IDS" set for a point of reverse curvature;

in a northwesterly direction, with said curve to the left, having a radius of 25.00 feet, a central angle of 85° 49' 08", a chord bearing and distance of North 40° 04' 52" West - 34.04 feet, and an arc distance of 37.45 feet, to a 5/8-inch iron rod with cap stamped "IDS" set for a point of compound curvature;

in a westerly direction, with said curve to the left, having a radius of 1170.00 feet, a central angle of 00° 08' 47", a chord bearing and distance of North 83° 03' 49" West - 2.99 feet, and an arc distance of 2.99 feet, to a 5/8-inch iron rod with cap stamped "IDS" set for the end of said curve;

North 06° 51' 47" East - 60.00 feet to a 5/8-inch iron rod with cap stamped "IDS" set for the beginning of a non-tangent curve to the left;

in a northeasterly direction, with said curve to the left, having a radius of 25.00 feet, a central angle of 89° 00' 33", a chord bearing and distance of North 52° 21' 31" East - 35.05 feet, and an arc distance of 38.84 feet, to a 5/8-inch iron rod with cap stamped "IDS" set for a point of reverse curvature;

in a northerly direction, with said curve to the right, having a radius of 1230.00 feet, a central angle of 01° 46' 26", a chord bearing and distance of North 08° 44' 27" East - 38.08 feet, and an arc distance of 38.08 feet, to a 5/8-inch iron rod with cap stamped "IDS" set for the end of said curve;

North 09° 37' 40" East - 145.00 feet to a 5/8-inch iron rod with cap stamped "IDS" set for the beginning of a curve to the left;

in a northerly direction, with said curve to the left, having a radius of 870.00 feet, a central angle of 04° 28' 40", a chord bearing and distance of North 07° 23' 20" East - 67.98 feet, and an arc distance of 67.99 feet, to a 5/8-inch iron rod with cap stamped "IDS" set for a point of compound curvature;

in a northerly direction, with said curve to the left, having a radius of 300.00 feet, a central angle of 13° 04' 23", a chord bearing and distance of North 01° 23' 12" West - 68.30 feet, and an arc distance of 68.45 feet, to a 5/8-inch iron rod with cap stamped "IDS" set for a point of compound curvature;

in a northerly direction, with said curve to the left, having a radius of 749.47 feet, a central angle of 03° 32' 34", a chord bearing and distance of North 09° 41' 41" West - 46.34 feet, and an arc distance of 46.34 feet, to a 5/8-inch iron rod with cap stamped "IDS" set for a point of reverse curvature;

in a northerly direction, with said curve to the right, having a radius of 300.00 feet, a central angle of 06° 43' 24", a chord bearing and distance of North 08° 06' 16" West - 35.18 feet, and an arc distance of 35.20 feet, to a 5/8-inch iron rod with cap stamped "IDS" set for a point of reverse curvature;

in a northerly direction, with said curve to the left, having a radius of 855.00 feet, a central angle of 04° 35' 34", a chord bearing and distance of North 07° 02' 21" West - 68.52 feet, and an arc distance of 68.54 feet, to a 5/8-inch iron rod with cap stamped "IDS" set for a point of compound curvature;

in a northwesterly direction, with said curve to the left, having a radius of 30.00 feet, a central angle of 89° 18' 00", a chord bearing and distance of North 53° 59' 09" West - 42.17 feet, and an arc distance of 46.76 feet, to a 5/8-inch iron rod with cap stamped "IDS" set for a point of reverse curvature;

in a westerly direction, with said curve to the right, having a radius of 2000.00 feet, a central angle of 08° 55' 40", a chord bearing and distance of South 85° 49' 41" West - 311.32 feet, and an arc distance of 311.64 feet, to a 5/8-inch iron rod with cap stamped "IDS" set for a point of compound curvature;

in a westerly direction, with said curve to the right, having a radius of 1750.00 feet, a central angle of 15° 09' 46", a chord bearing and distance of North 84° 19' 47" West - 461.77 feet, and an arc distance of 463.12 feet, to a 5/8-inch iron rod with cap stamped "IDS" set for a point of compound curvature;

in a westerly direction, with said curve to the right, having a radius of 2010.00 feet, a central angle of 00° 09' 20", a chord bearing and distance of North 76° 24' 30" West - 5.46 feet, and an arc distance of 5.46 feet, to a 5/8-inch iron rod with cap stamped "IDS" set for a point of reverse curvature;

in a southwesterly direction, with said curve to the left, having a radius of 30.00 feet, a central angle of 85° 05' 08", a chord bearing and distance of South 61° 07' 36" West - 40.57 feet, and an arc distance of 44.55 feet, to a 5/8-inch iron rod with cap stamped "IDS" set for a point of reverse curvature;

in a southerly direction, with said curve to the right, having a radius of 980.00 feet, a central angle of 00° 26' 08", a chord bearing and distance of South 18° 48' 06" West - 7.45 feet, and an arc distance of 7.45 feet, to a 5/8-inch iron rod with cap stamped "IDS" set for the end of said curve;

North 70° 58' 50" West - 60.00 feet to a 5/8-inch iron rod with cap stamped "IDS" set for the beginning of a non-tangent curve to the left;

in a northwesterly direction, with said curve to the left, having a radius of 30.00 feet, a central angle of 91° 58' 22", a chord bearing and distance of North 26° 58' 02" West - 43.15 feet, and an arc distance of 48.16 feet, to a 5/8-inch iron rod with cap stamped "IDS" set for a point of reverse curvature;

in a westerly direction, with said curve to the right, having a radius of 2010.00 feet, a central angle of 00° 06' 29", a chord bearing and distance of North 72° 28' 58" West - 33.03 feet, and an arc distance of 33.03 feet, to a 5/8-inch iron rod with cap stamped "IDS" set for the end of said curve;

North 72° 00' 44" West - 132.60 feet to a 5/8-inch iron rod with cap stamped "IDS" set for the beginning of a curve to the left;

in a southwesterly direction, with said curve to the left, having a radius of 400.00 feet, a central angle of 05° 40' 59", a chord bearing and distance of North 74° 51' 13" West - 39.66 feet, and an arc distance of 39.68 feet, to a 5/8-inch iron rod with cap stamped "IDS" set for the end of said curve;

North 77° 41' 43" West - 20.88 feet to a 5/8-inch iron rod with cap stamped "IDS" set for the beginning of a curve to the right;

in a westerly direction, with said curve to the right, having a radius of 400.00 feet, a central angle of 05° 40' 59", a chord bearing and distance of North 74° 51' 13" West - 39.66 feet, and an arc distance of 39.68 feet, to a 5/8-inch iron rod with cap stamped "IDS" set for the end of said curve;

North 72° 00' 44" West - 275.59 feet to a 5/8-inch iron rod with cap stamped "IDS" set for the beginning of a curve to the left;

in a southwesterly direction, with said curve to the left, having a radius of 30.00 feet, a central angle of 85° 19' 22", a chord bearing and distance of South 65° 19' 35" West - 40.66 feet, and an arc distance of 44.67 feet, to a 5/8-inch iron rod with cap stamped "IDS" set for a point of compound curvature;

in a southwesterly direction, with said curve to the left, having a radius of 1934.00 feet, a central angle of 00° 25' 45", a chord bearing and distance of South 22° 27' 01" West - 14.49 feet, and an arc distance of 14.49 feet, to a 5/8-inch iron rod with cap stamped "IDS" set for the end of said curve;

North 67° 45' 52" West - 132.00 feet to a 5/8-inch iron rod with cap stamped "IDS" set for the beginning of a non-tangent curve to the left;

in a northwesterly direction, with said curve to the left, having a radius of 30.00 feet, a central angle of 94° 14' 52", a chord bearing and distance of North 24° 53' 18" West - 43.97 feet, and an arc distance of 49.35 feet, to a 5/8-inch iron rod with cap stamped "IDS" set for the end of said curve;

North 17° 59' 16" East - 132.00 feet to a 5/8-inch iron rod with cap stamped "IDS" set for an angle corner of the herein described tract;

South 72° 00' 44" East - 23.21 feet to a 5/8-inch iron rod with cap stamped "IDS" set for the beginning of a curve to the left;

in a northeasterly direction, with said curve to the left, having a radius of 30.00 feet, a central angle of 80° 27' 49", a chord bearing and distance of North 67° 45' 22" East - 38.75 feet, and an arc distance of 42.13 feet, to a 5/8-inch iron rod with cap stamped "IDS" set for a point of reverse curvature;

in a northeasterly direction, with said curve to the right, having a radius of 2066.00 feet, a central angle of 08° 08' 03", a chord bearing and distance of North 31° 35' 29" East - 293.05 feet, and an arc distance of 293.30 feet, to a 5/8-inch iron rod with cap stamped "IDS" set for a point of compound curvature;

in a northeasterly direction, with said curve to the right, having a radius of 300.00 feet, a central angle of 05° 51' 20", a chord bearing and distance of North 38° 35' 10" East - 30.65 feet, and an arc distance of 30.66 feet, to a 5/8-inch iron rod with cap stamped "IDS" set for the end of said curve;

North 41° 30' 49" East - 57.04 feet to a 5/8-inch iron rod with cap stamped "IDS" set for the beginning of a curve to the left;

in a northeasterly direction, with said curve to the left, having a radius of 300.00 feet, a central angle of 02° 59' 26", a chord bearing and distance of North 40° 01' 06" East - 15.66 feet, and an arc distance of 15.66 feet, to a 5/8-inch iron rod with cap stamped "IDS" set for a point of reverse curvature;

in a northeasterly direction, with said curve to the right, having a radius of 1000.00 feet, a central angle of 05° 38' 16", a chord bearing and distance of North 41° 07' 34" East - 98.36 feet, and an arc distance of 98.40 feet, to a 5/8-inch iron rod with cap stamped "IDS" set for the end of said curve;

North 42° 32' 07" East - 154.09 feet to a 5/8-inch iron rod with cap stamped "IDS" set for the beginning of a curve to the left;

in a northeasterly direction, with said curve to the left, having a radius of 1500.00 feet, a central angle of 07° 26' 14", a chord bearing and distance of North 39° 23' 15" East - 194.57 feet, and an arc distance of 194.71 feet, to a 5/8-inch iron rod with cap stamped "IDS" set for a point of compound curvature;

in a northeasterly direction, with said curve to the left, having a radius of 1755.00 feet, a central angle of 06° 35' 49", a chord bearing and distance of North 31° 35' 58" East - 201.95 feet, and an arc distance of 202.07 feet, to a 5/8-inch iron rod with cap stamped "IDS" found for an angle corner of JORDAN RANCH STREET DEDICATION NO. 4 AND RESERVES according to the plat thereof recorded under Plat Number 20190006 of the Official Public Records of Fort Bend County, Texas, and the northwest corner of the herein described tract;

THENCE South 61° 41' 56" East - 100.00 feet, with a southerly line of said JORDAN RANCH STREET DEDICATION NO. 4 AND RESERVES, to a 5/8-inch iron rod with cap stamped "IDS" found for an angle corner of said JORDAN RANCH STREET DEDICATION NO. 4 AND RESERVES and the most northerly northeast corner of the herein described tract and the beginning of a non-tangent curve to the right;

THENCE, continuing across said 1352.43 acre tract, the following courses, and distances:

in a southwesterly direction, with said curve to the right, having a radius of 1855.00 feet, a central angle of 06° 35' 49", a chord bearing and distance of South 31° 35' 58" West - 213.46 feet, and an arc distance of 213.58 feet, to a 5/8-inch iron rod with cap stamped "IDS" set for a point of compound curvature;

in a southwesterly direction, with said curve to the right, having a radius of 1500.00 feet, a central angle of 07° 52' 51", a chord bearing and distance of South 36° 50' 38" West - 206.16 feet, and an arc distance of 206.32 feet, to a 5/8-inch iron rod with cap stamped "IDS" set for the end of said curve;

South 39° 59' 03" West - 154.09 feet to a 5/8-inch iron rod with cap stamped "IDS" set for the beginning of a curve to the left;

in a southwesterly direction, with said curve to the left, having a radius of 1000.00 feet, a central angle of 05° 18' 54", a chord bearing and distance of South 38° 34' 55" West - 92.73 feet, and an arc distance of 92.77 feet, to a 5/8-inch iron rod with cap stamped "IDS" set for a point of compound curvature;

in a southwesterly direction, with said curve to the left, having a radius of 300.00 feet, a central angle of 06° 26' 20", a chord bearing and distance of South 35° 18' 13" West - 33.70 feet, and an arc distance of 33.71 feet, to a 5/8-inch iron rod with cap stamped "IDS" set for the end of said curve;

South 32° 05' 03" West - 44.65 feet to a 5/8-inch iron rod with cap stamped "IDS" set for the beginning of a curve to the right;

in a southwesterly direction, with said curve to the right, having a radius of 300.00 feet, a central angle of 03° 34' 27", a chord bearing and distance of South 33° 52' 16" West - 18.71 feet, and an arc distance of 18.71 feet, to a 5/8-inch iron rod with cap stamped "IDS" set for a point of reverse curvature;

in a southwesterly direction, with said curve to the left, having a radius of 1934.00 feet, a central angle of 07° 09' 43", a chord bearing and distance of South 32° 04' 38" West - 241.59 feet, and an arc distance of 241.75 feet, to a 5/8-inch iron rod with cap stamped "IDS" set for a point of compound curvature;

in a southeasterly direction, with said curve to the left, having a radius of 30.00 feet, a central angle of 100° 30' 30", a chord bearing and distance of South 21° 45' 29" East - 46.13 feet, and an arc distance of 52.63 feet, to a 5/8-inch iron rod with cap stamped "IDS" set for the end of said curve;

South 72° 00' 44" East - 250.00 feet to a 5/8-inch iron rod with cap stamped "IDS" set for the beginning of a curve to the right;

in a southeasterly direction, with said curve to the right, having a radius of 400.00 feet, a central angle of 05° 40' 59", a chord bearing and distance of South 69° 10' 14" East - 39.66 feet, and an arc distance of 39.68 feet, to a 5/8-inch iron rod with cap stamped "IDS" set for the end of said curve;

South 66° 19' 44" East - 20.88 feet to a 5/8-inch iron rod with cap stamped "IDS" set for the beginning of a curve to the left;

in a southeasterly direction, with said curve to the right, having a radius of 400.00 feet, a central angle of 05° 40' 59", a chord bearing and distance of South 69° 10' 14" East - 39.66 feet, and an arc distance of 39.68 feet, to a 5/8-inch iron rod with cap stamped "IDS" set for the end of said curve;

South 72° 00' 44" East - 132.60 feet to a 5/8-inch iron rod with cap stamped "IDS" set for the beginning of a curve to the left;

in a southeasterly direction, with said curve to the left, having a radius of 1890.00 feet, a central angle of 00° 46' 54", a chord bearing and distance of South 72° 24' 11" East - 25.79 feet, and an arc distance of 25.79 feet, to a 5/8-inch iron rod with cap stamped "IDS" set for a point of compound curvature;

in a northeasterly direction, with said curve to the left, having a radius of 30.00 feet, a central angle of 92° 40' 41", a chord bearing and distance of North 60° 52' 01" East - 43.41 feet, and an arc distance of 48.53 feet, to a 5/8-inch iron rod with cap stamped "IDS" set for the end of said curve;

South 75° 28' 19" East - 60.00 feet to a 5/8-inch iron rod with cap stamped "IDS" set for an angle point;

South 14° 31' 41" West - 1.73 feet to a 5/8-inch iron rod with cap stamped "IDS" set for the beginning of a curve to the left;

in a southeasterly direction, with said curve to the left, having a radius of 30.00 feet, a central angle of 89° 07' 52", a chord bearing and distance of South 30° 02' 15" East - 42.10 feet, and an arc distance of 46.67 feet, to a 5/8-inch iron rod with cap stamped "IDS" set for a point of compound curvature;

in an easterly direction, with said curve to the left, having a radius of 1750.00 feet, a central angle of 14° 21' 12", a chord bearing and distance of South 81° 46' 47" East - 437.25 feet, and an arc distance of 438.40 feet, to a 5/8-inch iron rod with cap stamped "IDS" set for a point of compound curvature;

in an easterly direction, with said curve to the left, having a radius of 1900.00 feet, a central angle of 08° 43' 57", a chord bearing and distance of North 85° 55' 32" East - 289.30 feet, and an arc distance of 289.58 feet, to a 5/8-inch iron rod with cap stamped "IDS" set for a point of compound curvature;

in a northeasterly direction, with said curve to the left, having a radius of 30.00 feet, a central angle of 92° 36' 19", a chord bearing and distance of North 35° 15' 24" East - 43.38 feet, and an arc distance of 48.49 feet, to a 5/8-inch iron rod with cap stamped "IDS" set for the end of said curve;

North 78° 57' 14" East - 90.00 feet to a 5/8-inch iron rod with cap stamped "IDS" set for an angle corner of the herein described tract;

South 11° 02' 46" East - 1.04 feet to a 5/8-inch iron rod with cap stamped "IDS" set for the beginning of a curve to the left;

in a southeasterly direction, with said curve to the left, having a radius of 30.00 feet, a central angle of 91° 04' 44", a chord bearing and distance of South 56° 35' 07" East - 42.82 feet, and an arc distance of 47.69 feet, to a 5/8-inch iron rod with cap stamped "IDS" set for the most easterly northeast corner of the herein described tract;

South 12° 07' 29" East - 100.00 feet to a 5/8-inch iron rod with cap stamped "IDS" set for an angle corner of the herein described tract;

South 77° 52' 31" West - 3.35 feet to a 5/8-inch iron rod with cap stamped "IDS" set for the beginning of a curve to the left;

in a southwesterly direction, with said curve to the left, having a radius of 30.00 feet, a central angle of 87° 25' 08", a chord bearing and distance of South 34° 09' 57" West - 41.46 feet, and an arc distance of 45.77 feet, to a 5/8-inch iron rod with cap stamped "IDS" set for a point of reverse curvature;

in a southerly direction, with said curve to the right, having a radius of 945.00 feet, a central angle of 04° 18' 06", a chord bearing and distance of South 07° 23' 35" East - 70.93 feet, and an arc distance of 70.95 feet, to a 5/8-inch iron rod with cap stamped "IDS" set for a point of compound curvature;

in a southerly direction, with said curve to the right, having a radius of 300.00 feet, a central angle of 11° 05' 29", a chord bearing and distance of South 00° 18' 13" West - 57.98 feet, and an arc distance of 58.07 feet, to a 5/8-inch iron rod with cap stamped "IDS" set for a point of compound curvature;

in a southerly direction, with said curve to the right, having a radius of 714.43 feet, a central angle of 04° 48' 34", a chord bearing and distance of South 08° 15' 14" West - 59.95 feet, and an arc distance of 59.97 feet, to a 5/8-inch iron rod with cap stamped "IDS" set for a point of reverse curvature;

in a southerly direction, with said curve to the left, having a radius of 300.00 feet, a central angle of 06° 37' 40", a chord bearing and distance of South 07° 20' 41" West - 34.68 feet, and an arc distance of 34.70 feet, to a 5/8-inch iron rod with cap stamped "IDS" set for a point of reverse curvature;

in a southerly direction, with said curve to the right, having a radius of 930.00 feet, a central angle of 05° 35' 49", a chord bearing and distance of South 06° 49' 46" West - 90.81 feet, and an arc distance of 90.85 feet, to a 5/8-inch iron rod with cap stamped "IDS" set for the end of said curve;

South 09° 37' 40" West - 19.16 feet to a 5/8-inch iron rod with cap stamped "IDS" set for the beginning of a curve to the left;

in a southeasterly direction, with said curve to the left, having a radius of 25.00 feet, a central angle of 91° 22' 58", a chord bearing and distance of South 36° 03' 49" East - 35.78 feet, and an arc distance of 39.87 feet, to a 5/8-inch iron rod with cap stamped "IDS" set for the end of said curve;

South 08° 14' 42" West - 60.00 feet to a 5/8-inch iron rod with cap stamped "IDS" set for the beginning of a non-tangent curve to the right;

in a westerly direction, with said curve to the right, having a radius of 580.00 feet, a central angle of 00° 15' 05", a chord bearing and distance of North 81° 37' 45" West - 2.55 feet, and an arc distance of 2.55 feet, to a 5/8-inch iron rod with cap stamped "IDS" set for a point of reverse curvature;

in a southwesterly direction, with said curve to the left, having a radius of 25.00 feet, a central angle of 88° 52' 07", a chord bearing and distance of South 54° 03' 44" West - 35.00 feet, and an arc distance of 38.78 feet, to a 5/8-inch iron rod with cap stamped "IDS" set for the end of said curve;

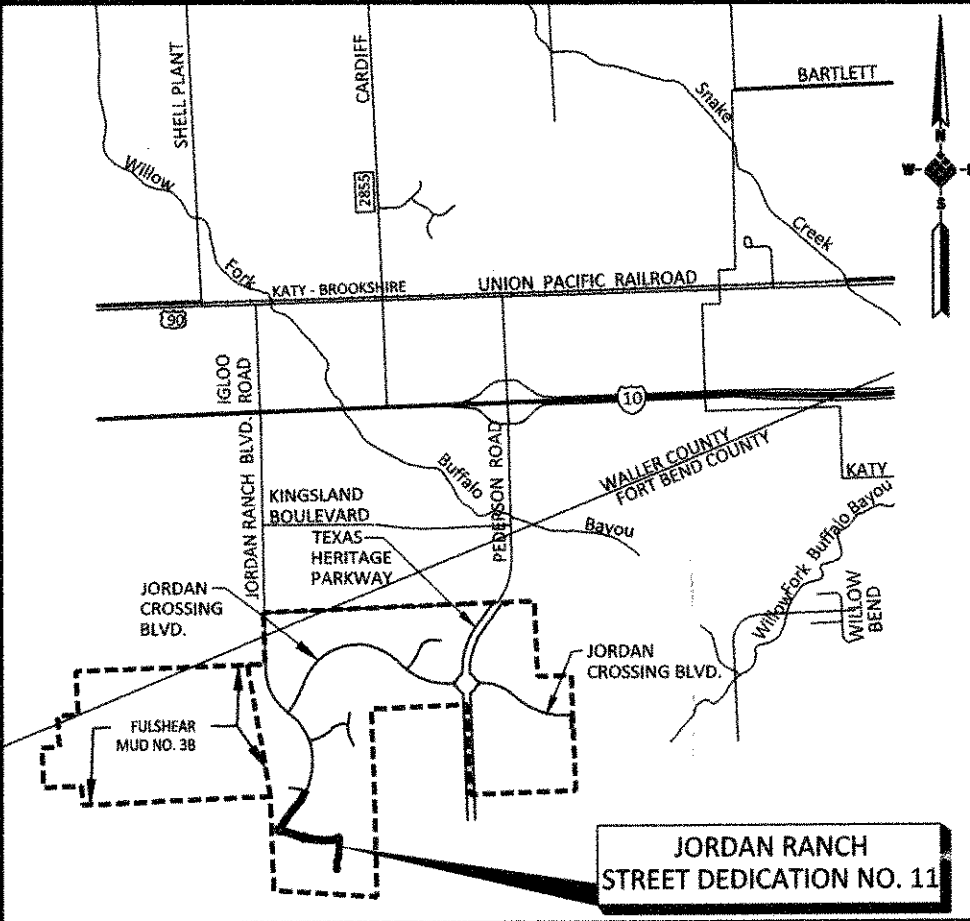
South 09° 37' 40" West - 15.82 feet to a 5/8-inch iron rod with cap stamped "IDS" set for the beginning of a curve to the left;

in a southerly direction, with said curve to the left, having a radius of 1170.00 feet, a central angle of 07° 50' 52", a chord bearing and distance of South 05° 42' 14" West - 160.13 feet, and an arc distance of 160.25 feet, to a 5/8-inch iron rod with cap stamped "IDS" set for the end of said curve;

South 01° 46' 48" West - 63.64 feet to a 5/8-inch iron rod with cap stamped "IDS" set for the beginning of a curve to the left;

in a southeasterly direction, with said curve to the left, having a radius of 25.00 feet, a central angle of 72° 38' 56", a chord bearing and distance of South 34° 32' 40" East - 29.62 feet, and an arc distance of 31.70 feet, to a 5/8-inch iron rod with cap stamped "IDS" set for the end of said curve;

South 19° 07' 52" West - 60.00 feet to the **POINT OF BEGINNING** of the herein described tract and containing 9.111 acres of land.



FORT BEND COUNTY KEY MAP NO. 482R AND 483N
VICINITY MAP
SCALE 1" = 5,000'

JORDAN RANCH STREET DEDICATION NO. 11

A SUBDIVISION OF

9.111 ACRES

LOCATED IN

H. & T.C.R.R. CO. SURVEY, SECTION 105, A-261

FORT BEND COUNTY, TEXAS

0 LOTS

0 BLOCKS

0 RESERVES

OWNER:

FORT BEND JORDAN RANCH LP

a Texas limited partnership
5005 RIVERWAY DRIVE, SUITE 500, HOUSTON, TEXAS 77056 (713) 960-9977

ENGINEER:

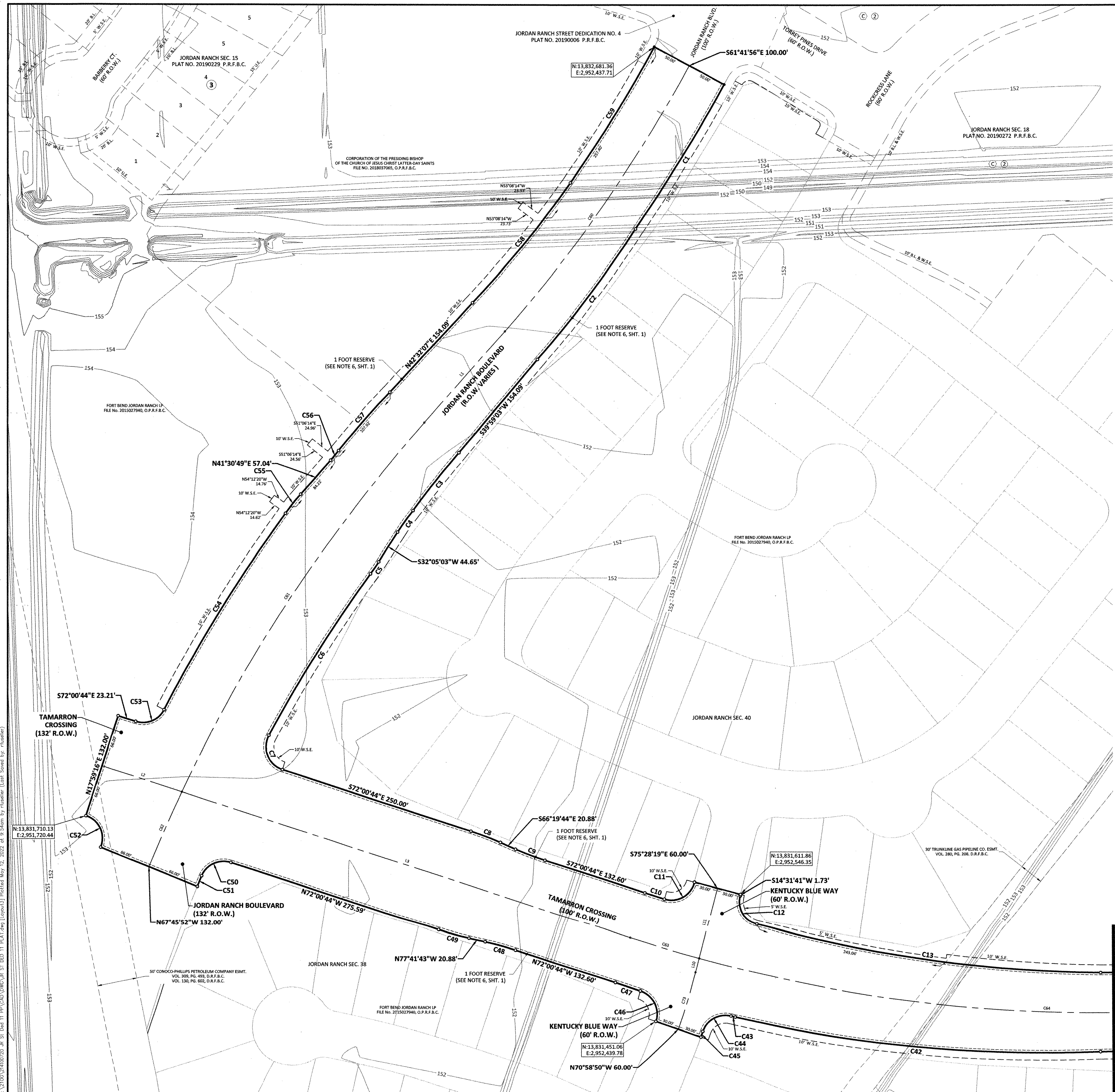


13430 NW, Freeway
Suite 700
Houston, Tx 77040
713-462-3178
Typing Firm 2728
Tdsurv Firm 10110700

MAY 2022

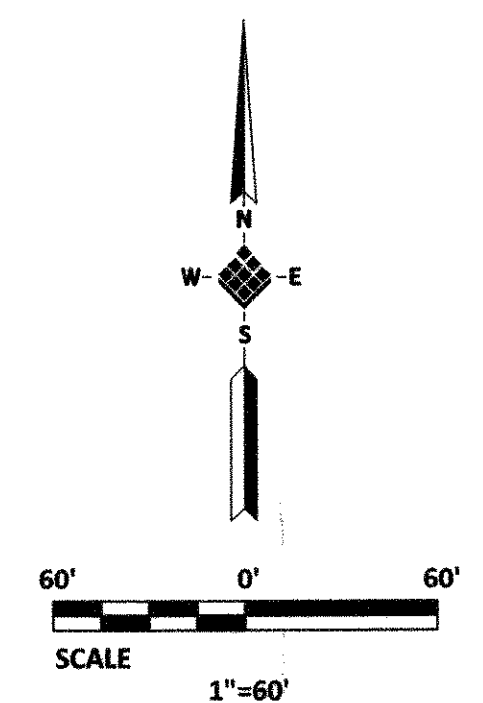
IDS PROJECT NO. 2141-007-20 SHEET 2 OF 4

JORDAN RANCH STREET DEDICATION NO. 11



CURVE TABLE						
CURVE	DELTA	RADIUS	LENGTH	TANGENT	CHORD BEARING	CHORD DISTANCE
C1	6°35'49"	1,855.00'	213.58'	106.91'	S31°35'58"W	213.46'
C2	7°52'51"	1,500.00'	206.32'	103.32'	S36°50'38"W	206.16'
C3	5°18'54"	1,000.00'	92.77'	46.42'	S38°34'55"W	92.73'
C4	6°26'20"	300.00'	33.71'	16.87'	S35°18'13"W	33.70'
C5	3°34'27"	300.00'	18.71'	9.36'	S33°52'16"W	18.71'
C6	7°09'43"	1,934.00'	241.75'	121.03'	S32°04'38"W	241.59'
C7	100°30'30"	30.00'	52.63'	36.08'	S21°45'29"E	46.13'
C8	5°40'59"	400.00'	39.68'	19.85'	S69°10'14"E	39.66'
C9	5°40'59"	400.00'	39.68'	19.85'	S69°10'14"E	39.66'
C10	0°46'54"	1,890.00'	25.79'	12.89'	S72°24'11"E	25.79'
C11	92°40'41"	30.00'	48.53'	31.44'	N60°52'01"E	43.41'
C12	89°07'52"	30.00'	46.67'	29.55'	S30°02'15"E	42.10'
C13	14°21'12"	1,750.00'	438.40'	220.35'	S81°46'47"E	437.25'
C14	8°43'57"	1,900.00'	289.58'	145.07'	N85°55'32"E	289.30'
C15	92°36'19"	30.00'	48.49'	31.40'	N35°15'24"E	43.38'
C16	91°04'44"	30.00'	47.69'	30.57'	S56°35'07"E	42.82'
C17	87°25'08"	30.00'	45.77'	28.68'	S34°09'57"W	41.46'
C18	4°18'06"	945.00'	70.95'	35.49'	S07°23'35"E	70.93'
C19	11°05'29"	300.00'	58.07'	29.13'	S00°18'13"W	57.98'
C20	4°48'34"	714.43'	59.97'	30.00'	S08°15'14"W	59.95'
C21	6°37'40"	300.00'	34.70'	17.37'	S07°20'41"W	34.68'
C22	5°35'49"	930.00'	90.85'	45.46'	S06°49'46"W	90.81'
C23	91°22'58"	25.00'	39.87'	25.61'	S36°03'49"E	35.78'
C24	0°15'05"	580.00'	2.55'	1.27'	N81°37'45"W	2.55'
C25	88°52'07"	25.00'	38.78'	24.51'	S54°03'44"W	35.00'
C26	7°50'52"	1,170.00'	160.25'	80.25'	S05°42'14"W	160.13'
C27	72°38'56"	25.00'	31.70'	18.38'	S34°32'40"E	29.62'
C28	31°08'27"	120.00'	65.22'	33.44'	N86°26'22"W	64.42'
C29	76°12'37"	25.00'	33.25'	19.61'	N39°53'06"E	30.86'
C30	1°02'54"	1,230.00'	22.51'	11.25'	N02°18'15"E	22.51'
C31	85°49'08"	25.00'	37.45'	23.24'	N40°04'52"W	34.04'
C32	0°08'47"	1,170.00'	2.99'	1.49'	N83°03'49"W	2.99'
C33	89°00'33"	25.00'	38.84'	24.57'	N52°21'31"E	35.05'
C34	1°46'26"	1,230.00'	38.08'	19.04'	N08°44'27"E	38.08'
C35	4°28'40"	870.00'	67.99'	34.01'	N07°23'20"E	67.98'
C36	13°04'23"	300.00'	68.45'	34.37'	N01°23'12"W	68.30'
C37	3°32'34"	749.47'	46.34'	23.18'	N09°41'41"W	46.34'
C38	6°43'24"	300.00'	35.20'	17.62'	N08°06'16"W	35.18'
C39	4°35'34"	855.00'	68.54'	34.29'	N07°02'21"W	68.52'
C40	89°18'00"	30.00'	46.76'	29.64'	N53°59'09"W	42.17'
C41	8°55'40"	2,000.00'	311.64'	156.13'	S85°49'41"W	311.32'
C42	15°09'46"	1,750.00'	463.12'	232.92'	N84°19'47"W	461.77'
C43	0°09'20"	2,010.00'	5.46'	2.73'	N76°24'30"W	5.46'
C44	85°05'08"	30.00'	44.55'	27.53'	S61°07'36"W	40.57'
C45	0°26'08"	980.00'	7.45'	3.72'	S18°48'06"W	7.45'
C46	91°58'22"	30.00'	48.16'	31.05'	N26°58'02"W	43.15'
C47	0°56'29"	2,010.00'	33.03'	16.51'	N72°28'58"W	33.03'
C48	5°40'59"	400.00'	39.68'	19.85'	N74°51'13"W	39.66'
C49	5°40'59"	400.00'	39.68'	19.85'	N74°51'13"W	39.66'
C50	85°19'22"	30.00'	44.67'	27.65'	S65°19'35"W	40.66'
C51	0°25'45"	1,934.00'	14.49'	7.24'	S22°27'01"W	14.49'
C52	94°14'52"	30.00'	49.35'	32.31'	N24°53'18"W	43.97'
C53	80°27'49"	30.00'	42.13'	25.38'	N67°45'22"E	38.75'
C54	8°08'03"	2,066.00'	293.30'	146.90'	N31°35'29"E	293.05'
C55	5°51'20"	300.00'	30.66'	15.34'	N38°35'10"E	30.65'
C56	2°59'26"	300.00'	15.66'	7.83'	N40°01'06"E	15.66'
C57	5°38'18"	1,000.00'	98.40'	49.24'	N41°07'34"E	98.36'
C58	7°26'14"	1,500.00'	194.71'	97.49'	N39°23'15"E	194.57'
C59	6°35'49"	1,755.00'	202.07'	101.14'	N31°35'58"E	201.95'
C60	12°57'31"	1,805.00'	408.24'	205.00'	S34°46'50"W	407.37'
C61	16°03'18"	2,000.00'	560.43'	282.06'	S33°13'56"W	558.60'
C62	2°58'09"	2,000.00'	103.64'	51.83'	S23°43'13"W	103.63'
C63	2°40'09"	1,950.00'	90.84'	45.43'	N73°20'48"W	90.84'
C64	26°04'15"	1,950.00'	887.29'	451.46'	N87°43'00"W	879.66'
C65	1°22'21"	1,950.00'	46.72'	23.36'	S78°33'42"W	46.71'
C66	20°40'25"	900.00'	324.74'	164.16'	S00°42'33"E	322.98'
C67	4°24'56"	1,200.00'	92.48'	46.26'	S07°25'12"W	92.46'
C68	3°25'56"	1,200.00'	71.88'	35.95'	N03°29'46"E	71.87'
C69	16°08'03"	150.00'	42.24'	21.26'	S86°03'27"W	42.10'
C70	15°00'23"	150.00'	39.29'	19.76'	N78°22'20"W	39.17'
C71	2°38'31"	1,200.00'	55.33'	27.67'	N81°48'57"W	55.33'
C72	5°52'21"	550.00'	56.37'	28.21'	N78°49'07"W	56.35'
C73	4°29'28"	950.00'	74.47'	37.25'	S16°46'25"W	74.45'

LINE TABLE		
LINE	BEARING	LENGTH
L1	S41°15'35"W	154.05'
L2	N72°00'44"W	106.09'
L3	N72°00'44"W	594.69'
L4	S77°52'31"W	29.80'
L5	S11°02'46"E	81.91'
L6	S11°02'46"E	53.61'
L7	S09°37'40"W	72.61'
L8	S09°37'40"W	72.39'
L9	N01°46'48"E	109.44'
L10	S14°31'41"W	18.52'
L11	S14°31'41"W	91.85'



JORDAN RANCH STREET DEDICATION NO. 11

A SUBDIVISION OF
9.111 ACRES

LOCATED IN
H. & T.C.R.R. CO. SURVEY, SECTION 105, A-261
FORT BEND COUNTY, TEXAS
0 LOTS 0 BLOCKS 0 RESERVES

OWNER: FORT BEND JORDAN RANCH LP
a Texas limited partnership
5005 BURNHAM DRIVE, SUITE 500, HOUSTON, TEXAS 77056 (713) 960-9977

ENGINEER: **IDS Engineering Group**
13430 NW Freeway Suite 700 Houston, TX 77040 713.462.3178 TxDOT Form 2726 TxDOT Form 503.0700

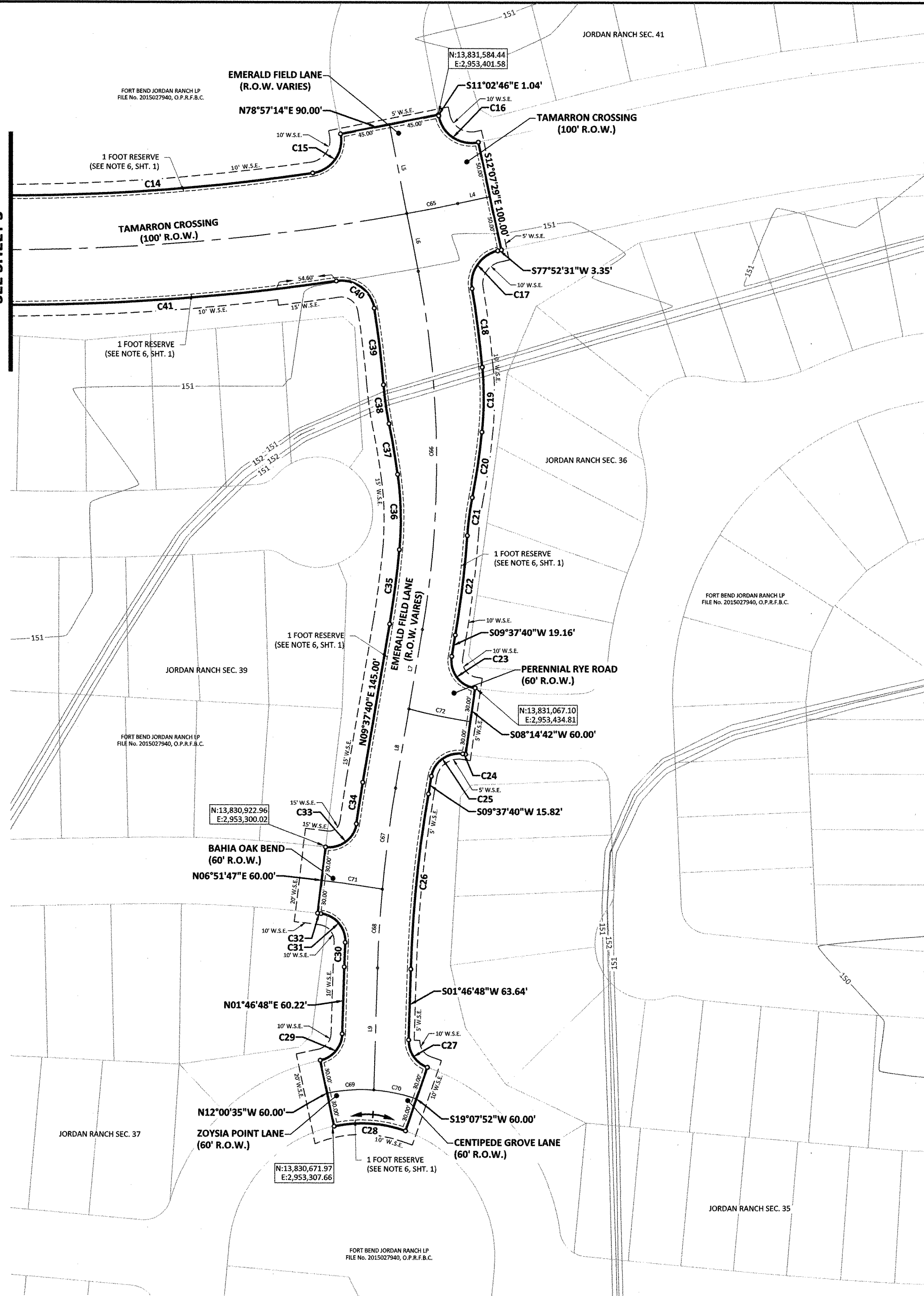
MAY 2022 IDS PROJECT NO. 2141-007-20 SHEET 3 OF 4

JORDAN RANCH STREET DEDICATION NO. 11

X:\2100\21400720.dwg, ST DED. 11, PLOT.dwg [Open] Plotted May 12, 2022 at 9:54am by fburglar (Last Saved by: fburglar)

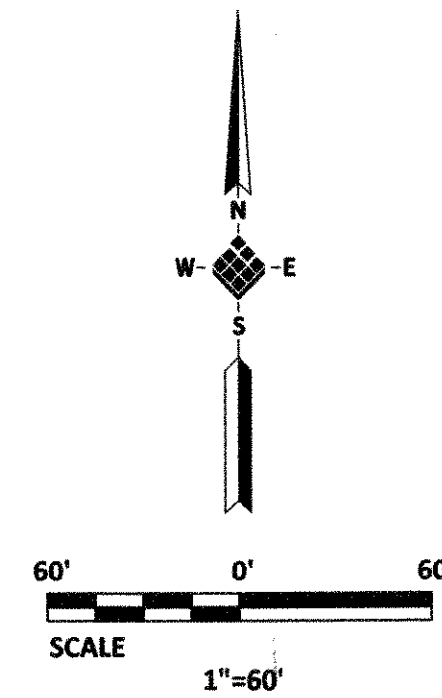
X:\2020\21402720_11_Plan.dwg [Layout1] Plotted May 12, 2022 at 9:54am by rjagelino (Last Saved by rjagelino)

MATCH LINE A
SEE SHEET 3



CURVE TABLE					
CURVE	DELTA	RADIUS	LENGTH	TANGENT	CHORD BEARING
C1	6°35'49"	1,855.00'	213.58'	106.91'	S31°35'58"W
C2	7°52'51"	1,500.00'	206.32'	103.32'	S36°50'38"W
C3	5°18'54"	1,000.00'	92.77'	46.42'	S38°34'55"W
C4	6°26'20"	300.00'	33.71'	16.87'	S35°18'13"W
C5	3°34'27"	300.00'	18.71'	9.36'	S33°52'16"W
C6	7°09'43"	1,934.00'	241.75'	121.03'	S32°04'38"W
C7	100°30'30"	30.00'	52.63'	36.08'	S21°45'29"E
C8	5°40'59"	400.00'	39.68'	19.85'	S69°10'14"E
C9	5°40'59"	400.00'	39.68'	19.85'	S69°10'14"E
C10	0°46'54"	1,890.00'	25.79'	12.89'	S72°24'11"E
C11	92°40'41"	30.00'	48.53'	31.44'	N60°52'01"E
C12	89°07'52"	30.00'	46.67'	29.55'	S30°02'15"E
C13	14°21'12"	1,750.00'	438.40'	220.35'	S81°46'47"E
C14	8°43'57"	1,900.00'	289.58'	145.07'	N85°55'32"E
C15	92°36'19"	30.00'	48.49'	31.40'	N35°15'24"E
C16	91°04'44"	30.00'	47.69'	30.57'	S56°35'07"E
C17	87°25'08"	30.00'	45.77'	28.68'	S34°09'57"W
C18	4°18'06"	945.00'	70.95'	35.49'	S07°23'35"E
C19	11°05'29"	300.00'	58.07'	29.13'	S00°18'13"W
C20	4°48'34"	714.43'	59.97'	30.00'	S08°15'14"W
C21	6°37'40"	300.00'	34.70'	17.37'	S07°20'41"W
C22	5°35'49"	930.00'	90.85'	45.46'	S06°49'46"W
C23	91°22'58"	25.00'	39.87'	25.61'	S36°03'49"E
C24	0°15'05"	580.00'	2.55'	1.27'	N81°37'45"W
C25	88°52'07"	25.00'	38.78'	24.51'	S54°03'44"W
C26	7°50'52"	1,170.00'	160.25'	80.25'	S05°42'14"W
C27	72°38'56"	25.00'	31.70'	18.38'	S34°32'40"E
C28	31°08'27"	120.00'	65.22'	33.44'	N86°26'22"W
C29	76°12'37"	25.00'	33.25'	19.61'	N39°53'06"E
C30	1°02'54"	1,230.00'	22.51'	11.25'	N02°18'15"E
C31	85°49'08"	25.00'	37.45'	23.24'	N40°04'52"W
C32	0°08'47"	1,170.00'	2.99'	1.49'	N83°03'49"W
C33	89°00'33"	25.00'	38.84'	24.57'	N52°21'31"E
C34	1°46'26"	1,230.00'	38.08'	19.04'	N08°44'27"E
C35	4°28'40"	870.00'	67.99'	34.01'	N07°23'20"E
C36	13°04'23"	300.00'	68.45'	34.37'	N01°23'12"W
C37	3°32'34"	749.47'	46.34'	23.18'	N09°41'41"W
C38	6°43'24"	300.00'	35.20'	17.62'	N08°06'16"W
C39	4°35'34"	855.00'	68.54'	34.29'	N07°02'21"W
C40	89°18'00"	30.00'	46.76'	29.64'	N53°59'09"W
C41	8°55'40"	2,000.00'	311.64'	156.13'	S85°49'41"W
C42	15°09'46"	1,750.00'	463.12'	232.92'	N84°19'47"W
C43	0°09'20"	2,010.00'	5.46'	2.73'	N76°24'30"W
C44	85°05'08"	30.00'	44.55'	27.53'	S61°07'36"W
C45	0°26'08"	980.00'	7.45'	3.72'	S18°48'06"W
C46	91°58'22"	30.00'	48.16'	31.05'	N26°58'02"W
C47	0°56'29"	2,010.00'	33.03'	16.51'	N72°28'58"W
C48	5°40'59"	400.00'	39.68'	19.85'	N74°51'13"W
C49	5°40'59"	400.00'	39.68'	19.85'	N74°51'13"W
C50	85°19'22"	30.00'	44.67'	27.65'	S65°19'35"W
C51	0°25'45"	1,934.00'	14.49'	7.24'	S22°27'01"W
C52	94°14'52"	30.00'	49.35'	32.31'	N24°53'18"W
C53	80°27'49"	30.00'	42.13'	25.38'	N67°45'22"E
C54	8°08'03"	2,066.00'	293.30'	146.90'	N31°35'29"E
C55	5°51'20"	300.00'	30.66'	15.34'	N38°35'10"E
C56	2°59'28"	300.00'	15.66'	7.83'	N40°01'06"E
C57	5°38'16"	1,000.00'	98.40'	49.24'	N41°07'34"E
C58	7°26'14"	1,500.00'	194.71'	97.49'	N39°23'15"E
C59	6°35'49"	1,755.00'	202.07'	101.14'	N31°35'58"E
C60	12°57'31"	1,805.00'	408.24'	205.00'	S34°46'50"W
C61	16°03'18"	2,000.00'	560.43'	282.06'	S33°13'56"W
C62	2°58'09"	2,000.00'	103.64'	51.83'	S23°43'13"W
C63	2°40'09"	1,950.00'	90.84'	45.43'	N73°20'48"W
C64	26°04'15"	1,950.00'	887.29'	451.46'	N87°43'00"W
C65	1°22'21"	1,950.00'	46.72'	23.36'	S78°33'42"W
C66	20°40'25"	900.00'	324.74'	164.15'	S00°42'33"E
C67	4°24'56"	1,200.00'	92.48'	46.26'	S07°25'12"W
C68	3°25'56"	1,200.00'	71.88'	35.95'	N03°29'46"E
C69	16°08'03"	150.00'	42.24'	21.26'	S86°03'27"W
C70	15°00'23"	150.00'	39.29'	19.76'	N78°22'20"W
C71	2°38'31"	1,200.00'	55.33'	27.67'	N81°48'57"W
C72	5°52'21"	550.00'	56.37'	28.21'	N78°49'07"W
C73	4°29'28"	950.00'	74.47'	37.25'	S16°46'25"W

LINE TABLE		
LINE	BEARING	LENGTH
L1	S41°15'35"W	154.05'
L2	N72°00'44"W	106.09'
L3	N72°00'44"W	594.69'
L4	S77°52'31"W	29.80'
L5	S11°02'46"E	81.91'
L6	S11°02'46"E	53.61'
L7	S09°37'40"W	72.61'
L8	S09°37'40"W	72.39'
L9	N01°46'48"E	109.44'
L10	S14°31'41"W	18.52'
L11	S14°31'41"W	91.85'



JORDAN RANCH STREET DEDICATION NO. 11

A SUBDIVISION OF
9.111 ACRES

LOCATED IN
H. & T.C.R.R. CO. SURVEY, SECTION 105, A-261
FORT BEND COUNTY, TEXAS
0 LOTS 0 BLOCKS 0 RESERVES

OWNER: **FORT BEND JORDAN RANCH LP**
2 Texas limited partnership
5025 RIVERWAY DRIVE, SUITE 500, HOUSTON, TEXAS 77056 (713) 960-9677

ENGINEER: **IDS**
Engineering Group

13430 NW, Freeway
Suite 700
Houston, Tx. 77040
713.462.3178
TxEng Firm 2726
TxSurv Firm 10110700