



Fort Bend County Engineering
FORT BEND COUNTY, TEXAS

J. Stacy Slawinski, P.E.
County Engineer

May 26, 2022

Judge KP George
Fort Bend County Judge
301 Jackson Street
Richmond, Texas 77469

RE: Major Thoroughfare Plan modifications to Bowser Road, Aylor Road, and Long Lane in the Orchard and Weston Lakes Extraterritorial Jurisdictions

Dear Judge George:

Fort Bend County Engineering respectfully requests modifications to the Fort Bend County Major Thoroughfare Plan (MTP). Coordination between Fort Bend County, the City of Orchard, and the City of Weston Lakes has occurred and all parties agree to the requested modifications. The requested modifications are as follows:

- **Bowser Road**
 - Downgrade to a Collector south of Winding Stream Drive for 2,170-feet and realign to its current county maintenance terminus north of the Brazos River
 - Remove the proposed Major Thoroughfare from its current maintenance terminus north of the Brazos River to Long Lane
- **Aylor Road** – remove the proposed Collector from approximately 4,300-feet north of Johnson Road north to its intersection with the Bowser Road major thoroughfare alignment (proposed to be removed)
- **Long Lane** – add as a Collector from Johnson Road north approximately 6,700-feet

A copy of the map is attached for your review. The public hearing date for acceptance of the change is being scheduled. If you should have any questions, please give me a call 281-633-7515.

Sincerely,

Maggie Dalton
Development Services Manager

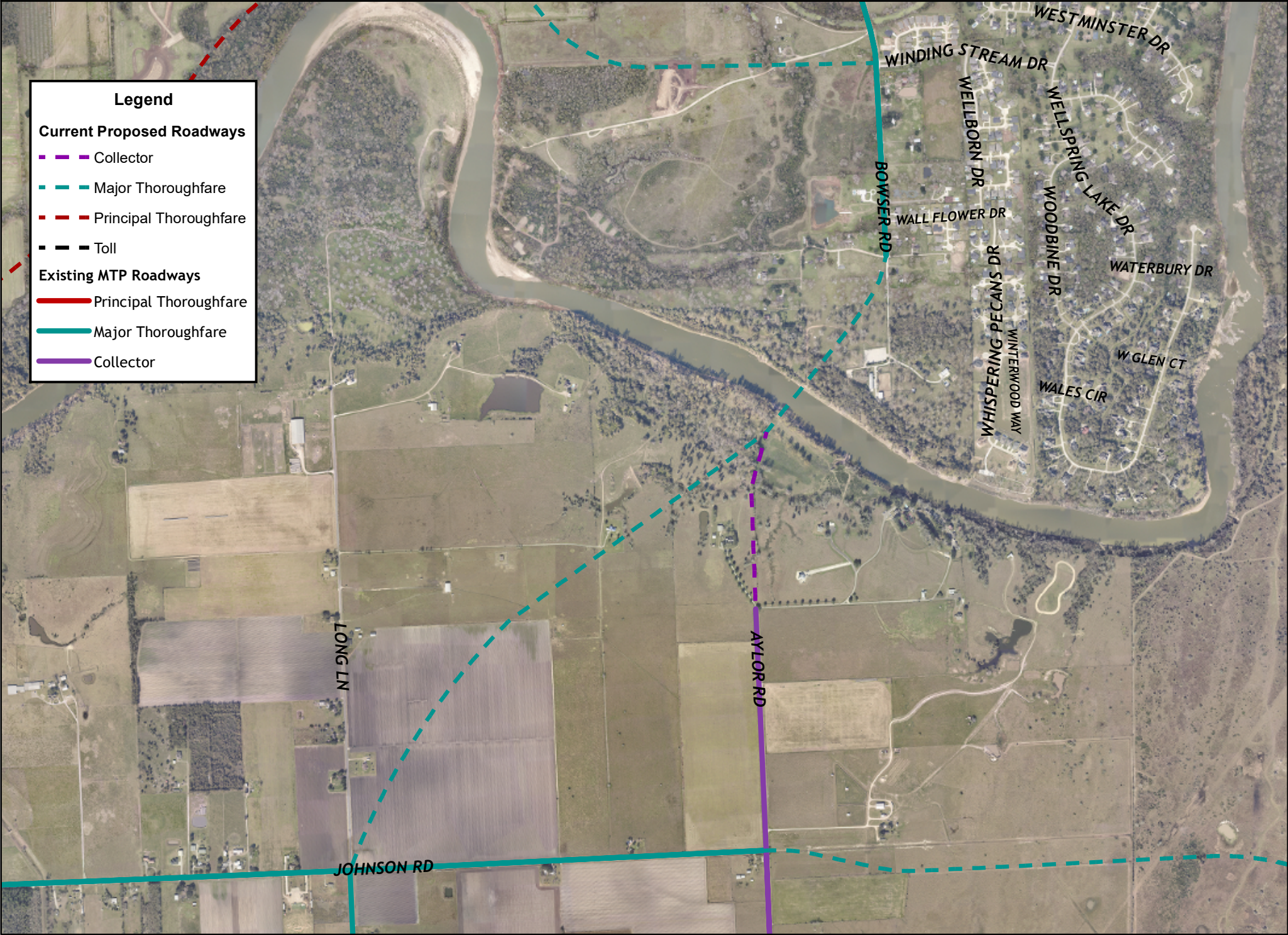
MD/mjs

cc: Commissioner Vincent M. Morales, Jr., Pct. 1
Commissioner Grady Prestage, Pct. 2
Commissioner W. A. Andy Meyers, Pct. 3
Commissioner Ken DeMerchant, Pct. 4
Mr. J. Stacy Slawinski, P.E., County Engineer
File

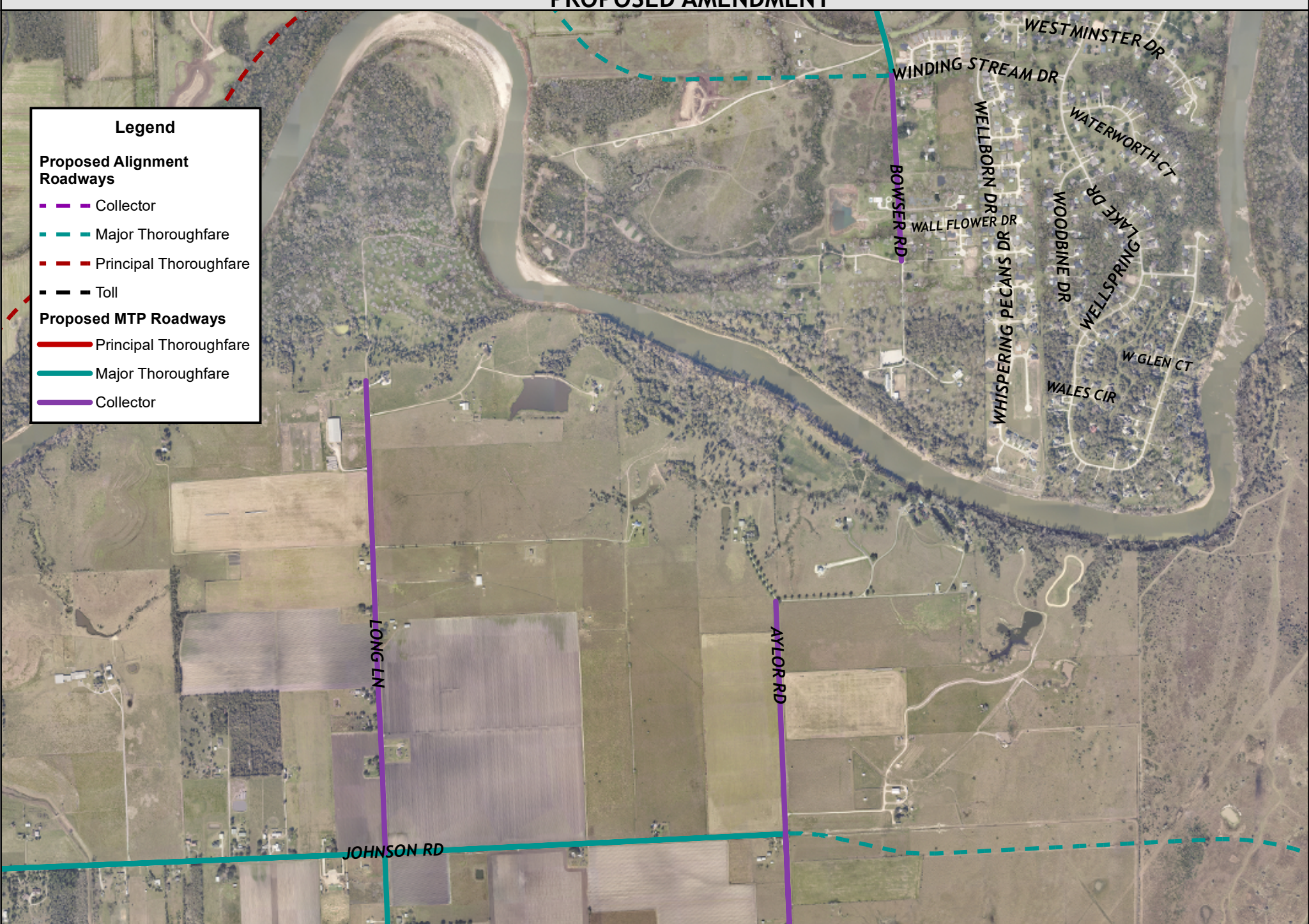
301 Jackson St., Suite 401 | Richmond, TX 77469
Phone 281-633-7500

MTP Amendment

ADOPTED/CURRENT PLAN



PROPOSED AMENDMENT



Map By:
Engineering GIS
May 2022

Major Thoroughfare Plan Proposed Amendment



This Geographic Information Systems (GIS) Data is a public resource of general information. The information contained was generated from GIS data maintained by Fort Bend County and different sources and agencies. The County of Fort Bend makes no warranty, representation, or guarantee as to the content sequence, accuracy, timeliness, or completeness of any of the spatial data or database information provided herein. The County of Fort Bend shall assume no liability for any errors, omissions, or inaccuracies in the information provided, regardless of how caused; or any decision made or action taken or not taken by any person relying on any information or data furnished within. If any errors are detected, please contact the GIS Division of Fort Bend County Engineering so they may be corrected.