





**REVIEW BY FORT BEND COUNTY**  
**COMMISSIONERS COURT**

**Fort Bend County**  
**Engineering Department**  
301 Jackson Suite 401  
Richmond, Texas 77469  
281.633.7500  
[Permits@fortbendcountytx.gov](mailto:Permits@fortbendcountytx.gov)

- Right of Way Permit  
 Commercial Driveway Permit

Permit No: 2022-55858

The following "Notice of Proposed Cable, Conduit, and/or Pole Line activity in Fort Bend County" and accompanying attachments have been reviewed and the notice conforms to appropriate regulations set by Commissioner's Court of Fort Bend County, Texas.

**(1) COMPLETE APPLICATION FORM:**

- a. Name of road, street, and/or drainage ditch affected.  
 b. Vicinity map showing course of directions  
 c. Plans and specifications

**(2) BOND:**

- County Attorney, approval when applicable.
- Perpetual bond currently posted.      Bond No: \_\_\_\_\_ Amount: \_\_\_\_\_
- Performance bond submitted.      Bond No: \_\_\_\_\_ Amount: \_\_\_\_\_
- Cashier's Check      Check No: [REDACTED] Amount: \$15,000.00

**(3) DRAINAGE DISTRICT APPROVAL (WHEN APPLICABLE):**

\_\_\_\_\_  
Drainage District Approval

\_\_\_\_\_  
Date

**We have reviewed this project and agree it meets minimum requirements.**

  
\_\_\_\_\_  
Permit Administrator

6/17/2022

\_\_\_\_\_  
Date

A:\1704\1801\Fort Bend County STD\DWY\SEC DRIVEWAY DETAILS FOR MAJOR ROADWAY CONSTRUCTION.DWG



- NOTES:**
1. SAWCUT EXISTING DRIVEWAY AT R.O.W. LINE OR AS SHOWN ON DRAWING AND REMOVE EXISTING DRIVEWAY TO SAWCUT LINE.
  2. IF THERE IS EXISTING CURB ON DRIVEWAY, CONNECT PROPOSED CURB TO EXISTING CURB OTHERWISE REFER CURB HEIGHT AS SHOWN.
  3. SEE PAVEMENT DETAIL SHEET FOR CONCRETE CURB REINFORCEMENT.
  4. THIS DRIVEWAY INSTALLATION IS GOVERNED BY HARRIS COUNTY ITEM 360.

MINIMUM RADII REQUIREMENTS - DRIVEWAYS		
	LOCAL	COLLECTOR/MAJOR
RESIDENTIAL	5'	-
COMMERCIAL	10'	25'



	PAVEMENT THICKNESS	COLLECTOR/MAJOR	RESIDENTIAL (MAJOR THROUGHFARE)	RESIDENTIAL (COLLECTORS AND LOCAL STREETS)
REINFORCEMENT	6"	#4 @ 24" O.C.E.W.	N/A	#4 @ 24" O.C.E.W.
	7"	#4 @ 24" O.C.E.W.	#4 @ 24" O.C.E.W.	#4 @ 24" O.C.E.W.
	8"	#4 @ 18" O.C.E.W.	#4 @ 18" O.C.E.W.	#4 @ 18" O.C.E.W.
EXPANSION DOWEL JOINT	6"	3/4" DIA. SMOOTH BAR	3/4" DIA. SMOOTH BAR	3/4" DIA. SMOOTH BAR
	7"	1" DIA. SMOOTH BAR	1" DIA. SMOOTH BAR	1" DIA. SMOOTH BAR
	8"	1" DIA. SMOOTH BAR	1" DIA. SMOOTH BAR	1" DIA. SMOOTH BAR
CONSTRUCTION JOINT DOWEL	ALL	#5 REBAR	#5 REBAR	#5 REBAR
	ALL	6" CEMENT-STABILIZED SAND	2" BANK SAND	2" BANK SAND
RUNNING SLOPE	ALL	2% TO 4%	2% TO 6%	2% TO 10%*

\*10% ALLOWABLE ON PRIVATELY CONSTRUCTED PROJECTS  
6% MAX ON PUBLIC PROJECTS

NO.	REVISIONS	DATE	NAME
1	ORIGINAL STANDARD ISSUED	2-1-21	RWB

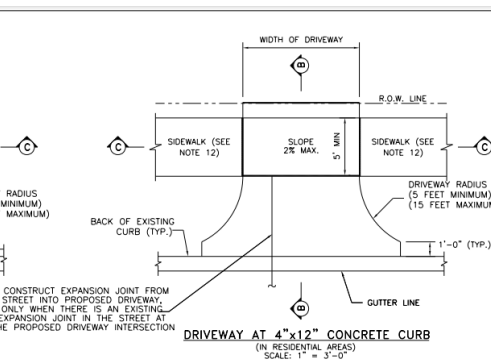
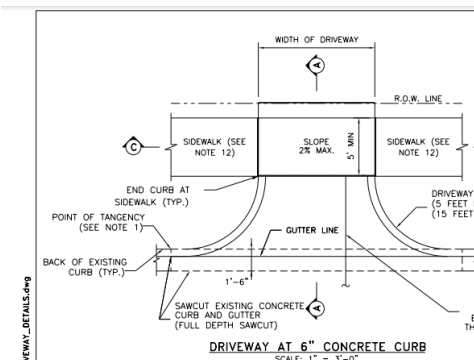
FORT BEND COUNTY  
ENGINEERING DEPARTMENT



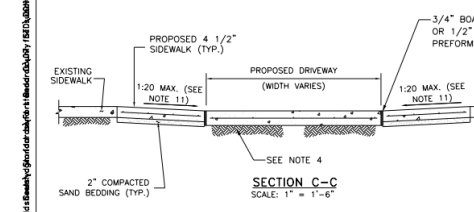
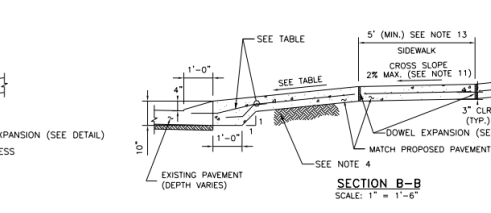
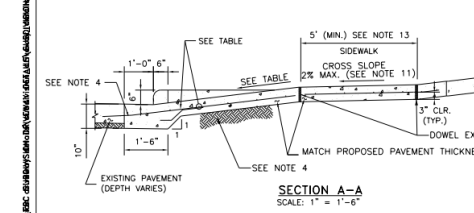
CONSULTANT LOGO  
(LAYER "C-NON-PRINT")

FOR INTERIM REVIEW ONLY  
DOCUMENT INCOMPLETE  
NOT APPROVED FOR CONSTRUCTION  
BIDDING/PERMITS PURPOSES  
(LAYER "C-NON-PRINT")  
P.E. SERIAL No.  
DATE:

PROJECT TITLE:	FRCD STANDARD
DRIVEWAY DETAILS FOR MAJOR ROADWAY CONSTRUCTION	
DATE: 2-1-21	SHEET NO. # / #



- NOTES:**
1. PROPOSED DRIVEWAY AT 6" CONCRETE CURB SHALL MATCH EXISTING CURB AT POINT OF TANGENCY.
  2. PROPOSED DRIVEWAY SHALL BE BUILT WITH PORTLAND CEMENT CONCRETE, 5 1/2 SACK MINIMUM PER CUBIC YARD, 3,500 PSI STRENGTH AT 28 DAYS. THIS DRIVEWAY INSTALLATION IS GOVERNED BY HARRIS COUNTY ITEM 360.
  3. COMPACTION OF SUBGRADE TO 95% OF STANDARD PROCTOR DENSITY (ASTM D698) (± 2% OPTIMUM MOISTURE) FOR PROPOSED DRIVEWAY CONNECTION. THE COUNTY ENGINEER RESERVES THE RIGHT TO INSPECT AND REQUIRE LABORATORY TEST TO BE CONDUCTED.
  4. FOR COMMERCIAL DRIVEWAYS, USE 6" OF COMPACTED CEMENT STABILIZED SAND. FOR RESIDENTIAL DRIVEWAYS, USE 2" OF COMPACTED BANK SAND.
  5. A PROPOSED DRIVEWAY TO BE BUILT ON A CORNER LOT CANNOT BE LOCATED WITHIN ANY PORTION OF THE PUBLIC STREET CURB RADI. THE POINTS OF TANGENCY MAY BE THE SAME POINT ALONG THE STREET CURB LINE.
  6. PROPOSED DRIVEWAY REINFORCING STEEL SHALL BE TIED TO EXISTING CONCRETE PAVEMENT WITH A MINIMUM LAP OF 16 INCHES.
  7. IF EXISTING STREET REBAR IS CUT OFF, THEN #4 DOWEL BARS (18" LONG) NEED TO BE INSTALLED AT 24" SPACING, EMBEDDED 9 INCHES AND EPOXIED OR MATCH EXISTING SPACING IF TIGHTER. 3" NON-METALLIC CHAIRS ARE REQUIRED.
  8. FOR CAPITAL IMPROVEMENT PROJECTS, THE SUBGRADE SHALL BE STABILIZED ACCORDING TO THE GEOTECHNICAL REPORT RECOMMENDATIONS.
  9. SAW AND SEAL ALL CONSTRUCTION JOINTS.
  10. SIDEWALK SLOPES SHALL COMPLY WITH THE TEXAS ACCESSIBILITY STANDARDS 403.3 "SLOPE".
  11. IF SIDEWALK IS EXISTING, SEE SECTION C-C.
  12. SIDEWALKS MAY BE REDUCED TO 4" IN FRONT OF SINGLE-FAMILY RESIDENTIAL LOTS WHEN A 5' PASSING AREA IS PROVIDED IN THE DRIVEWAY.
  13. FOR SIDEWALK DETAILS SEE SIDEWALK DETAILS SHEET.



	PAVEMENT THICKNESS	COLLECTOR/MAJOR	RESIDENTIAL (MAJOR THROUGHFARE)	RESIDENTIAL (COLLECTORS AND LOCAL STREETS)
REINFORCEMENT	6"	#4 @ 24" O.C.E.W.	N/A	#4 @ 24" O.C.E.W.
	7"	#4 @ 24" O.C.E.W.	#4 @ 24" O.C.E.W.	#4 @ 24" O.C.E.W.
	8"	#4 @ 18" O.C.E.W.	#4 @ 18" O.C.E.W.	#4 @ 18" O.C.E.W.
EXPANSION DOWEL JOINT	6"	3/4" DIA. SMOOTH BAR	3/4" DIA. SMOOTH BAR	3/4" DIA. SMOOTH BAR
	7"	1" DIA. SMOOTH BAR	1" DIA. SMOOTH BAR	1" DIA. SMOOTH BAR
	8"	1" DIA. SMOOTH BAR	1" DIA. SMOOTH BAR	1" DIA. SMOOTH BAR
CONSTRUCTION JOINT DOWEL	ALL	#5 REBAR	#5 REBAR	#5 REBAR
	ALL	6" CEMENT-STABILIZED SAND	2" BANK SAND	2" BANK SAND
RUNNING SLOPE	ALL	2% TO 4%	2% TO 6%	2% TO 10%*

\*10% ALLOWABLE ON PRIVATELY CONSTRUCTED PROJECTS  
6% MAX ON PUBLIC PROJECTS

NO.	REVISIONS	DATE	NAME
1	ORIGINAL STANDARD ISSUED	2-1-21	RWB

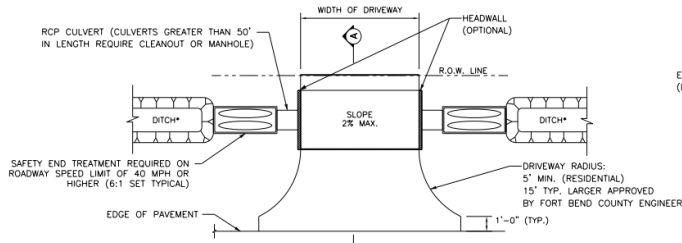
FORT BEND COUNTY  
ENGINEERING DEPARTMENT



CONSULTANT LOGO  
(LAYER "C-NON-PRINT")

FOR INTERIM REVIEW ONLY  
DOCUMENT INCOMPLETE  
NOT APPROVED FOR CONSTRUCTION  
BIDDING/PERMITS PURPOSES  
(LAYER "C-NON-PRINT")  
P.E. SERIAL No.  
DATE:

PROJECT TITLE:	FRCD STANDARD
DRIVEWAY DETAILS FOR RESIDENTIAL DRIVEWAYS	
DATE: 2-1-21	SHEET NO. # / #

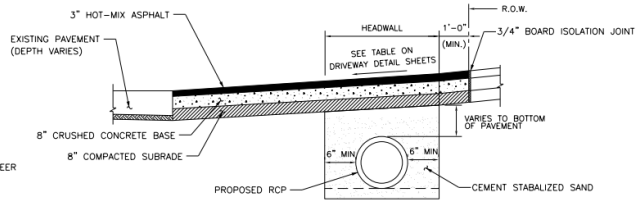


**OPEN DITCH DRIVEWAY**  
\*DITCH IS TO HAVE 4:1 SLOPE

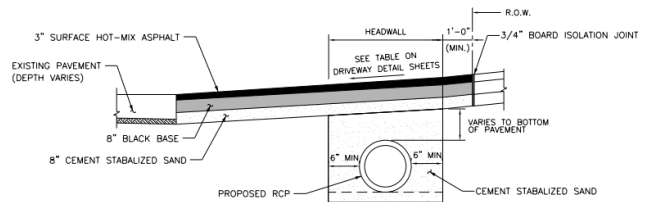
MINIMUM RADI REQUIREMENTS - DRIVEWAYS		
	LOCAL	COLLECTOR/MAJOR
RESIDENTIAL	5'	-
COMMERCIAL	10'	25'



**ASPHALT APRON DETAIL - DRIVEWAY PROFILE FOR CULVERT DRAINAGE**



**SECTION A-A FOR RESIDENTIAL DRIVEWAYS**



**SECTION A-A FOR COMMERCIAL DRIVEWAYS**

NO.	REVISIONS	DATE	NAME
1	ORIGINAL STANDARD ISSUED	2-1-21	RWB
2			
3			
4			

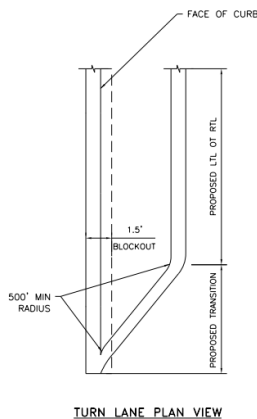
FORT BEND COUNTY  
ENGINEERING DEPARTMENT



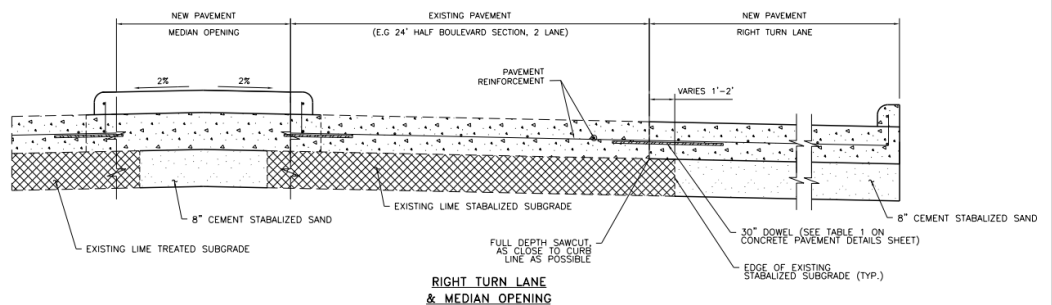
CONSULTANT LOGO  
(LAYER "C-NON-PRINT")

FOR INTERIM REVIEW ONLY  
DOCUMENT INCOMPLETE.  
NOT APPROVED FOR CONSTRUCTION.  
BIDDING/PERMITS PURPOSES  
(LAYER "C-NON-PRINT")  
P.E. SERIAL No.  
DATE:

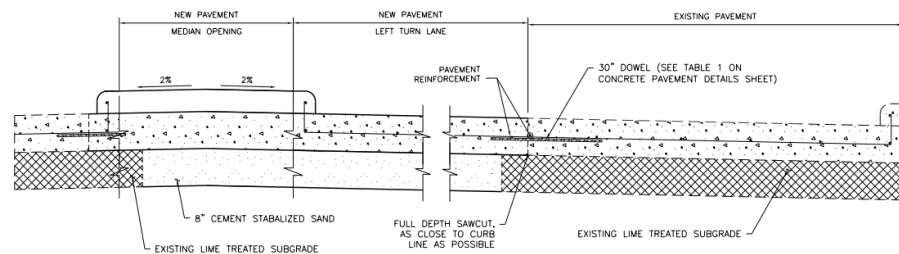
PROJECT TITLE:		FRCD STANDARD
DRAWN BY: INIT	SHEET DESCRIPTION: ASPHALT DRIVEWAY DETAILS	FRCD STANDARD
CHECKED BY: INIT		
SCALE: AS NOTED		
DATE: 2-1-21	APPROVED BY:	SHEET NO: # / #



**TURN LANE PLAN VIEW**



**RIGHT TURN LANE & MEDIAN OPENING**



**LEFT TURN LANE & MEDIAN OPENING**

- NOTES**
- FOR CONCRETE PAVEMENT REINFORCEMENT AND JOINT DETAILS, SEE CONCRETE PAVEMENT DETAILS SHEET

NO.	REVISIONS	DATE	NAME
1	ORIGINAL STANDARD ISSUED	2-1-21	RWB
2			
3			
4			

FORT BEND COUNTY  
ENGINEERING DEPARTMENT

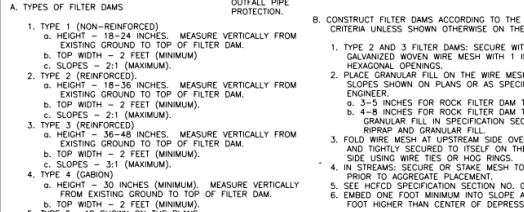
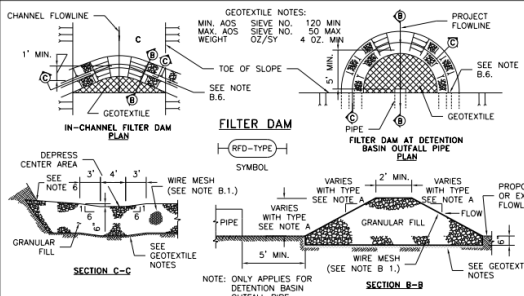
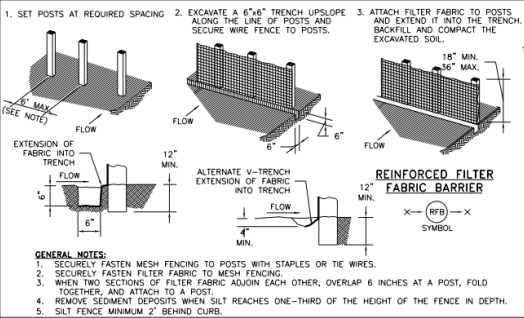


CONSULTANT LOGO  
(LAYER "C-NON-PRINT")

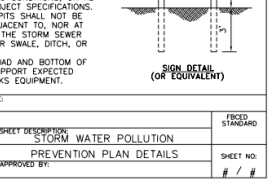
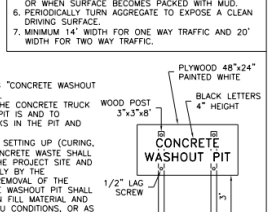
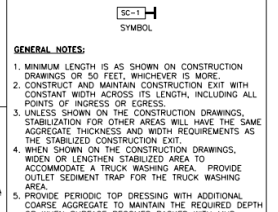
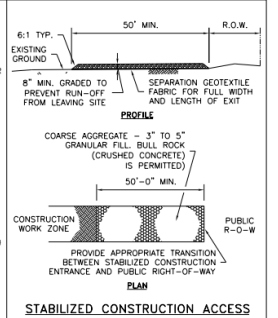
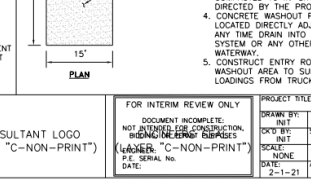
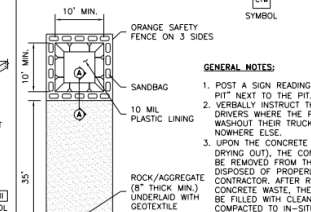
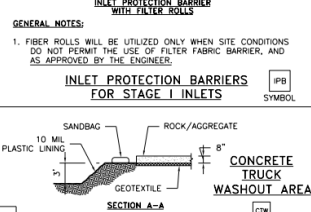
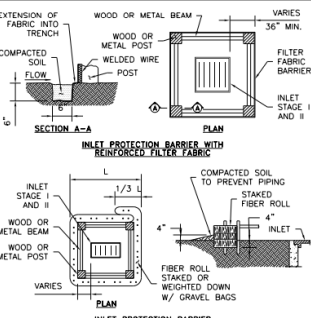
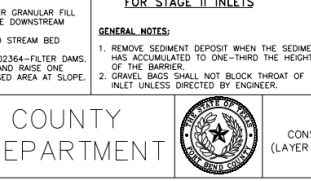
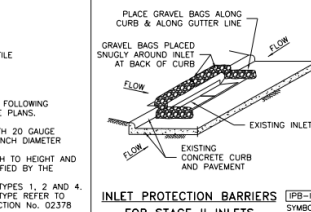
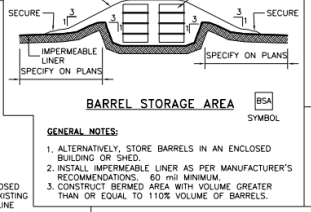
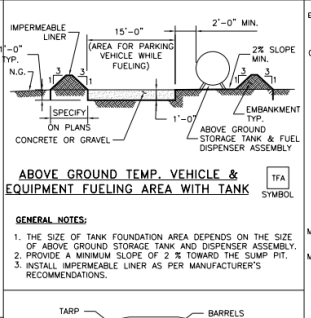
FOR INTERIM REVIEW ONLY  
DOCUMENT INCOMPLETE.  
NOT APPROVED FOR CONSTRUCTION.  
BIDDING/PERMITS PURPOSES  
(LAYER "C-NON-PRINT")  
P.E. SERIAL No.  
DATE:

PROJECT TITLE:		FRCD STANDARD
DRAWN BY: INIT	SHEET DESCRIPTION: TURN LANE & MEDIAN OPENING DETAIL	FRCD STANDARD
CHECKED BY: INIT		
SCALE: AS NOTED		
DATE: 2-1-21	APPROVED BY:	SHEET NO: # / #

A:\176A\180A\Fort Bend County Standard\Fort Bend County STD\DWG\FBC STORM WATER POLLUTION PREVENTION PLAN DETAILS\STORM\_WATER\_POLLUTION\_PREVENTION\_PLAN\_DETAILS.dwg



NO.	REVISIONS	DATE	NAME
1	ORIGINAL STANDARD ISSUED	2-1-21	RWB
2			
3			
4			



FORT BEND COUNTY  
ENGINEERING DEPARTMENT



CONSULTANT LOGO  
(LAYER "C-NON-PRINT")

FOR INTERIM REVIEW ONLY  
DOCUMENT INCOMPLETE.  
NOT INTENDED FOR CONSTRUCTION.  
NO DIMENSIONS OR BARRELS  
(LAYER "C-NON-PRINT")  
P.E. SERIAL No. DATE.

PROJECT TITLE:	DRAWN BY:	DATE:	REVISIONS:	DATE:	BY:	DESCRIPTION:
STORM WATER POLLUTION PREVENTION PLAN DETAILS	INT	2-1-21				