

THE STATE OF TEXAS                   §  
   §  
COUNTY OF FORT BEND               §

PETITION AND CONSENT BY LANDOWNER TO THE  
INCLUSION OF ROAD RIGHT OF WAY TO  
FORT BEND COUNTY ASSISTANCE DISTRICT NO. 19

Fort Bend County, (referred to herein as the "Petitioner"), is the owner, either in fee, dedication, prescriptive right of way, by permanent easement or express permission for entry and maintaining, of certain roadways, situated in Fort Bend County, Texas, described in the attached Exhibit A, (the "Annex Area"), and incorporated herein for all purposes.

Fort Bend County Assistance District No. 19 ("CAD No. 19" or the "District") was created and authorized to impose a sales and use tax, which may be used for the following purposes within the boundaries of the District: (1) the construction, maintenance, or improvement of roads or highways; (2) the provision of law enforcement and detention services; (3) the maintenance or improvement of libraries, museums, parks, or other recreational facilities; (4) the provision of services that benefit the public health or welfare, including the provision of firefighting and fire prevention services; or (5) the promotion of economic development and tourism.

The Annex Area, being primarily right of way for roadway and drainage is in need of certain maintenance and capable of being served by CAD No. 19. Petitioner hereby petitions the Board of Directors of CAD No. 19 to take all legal steps necessary to include the Annex Area into the boundaries of the CAD No. 19.

Petitioner covenants and agrees that there are no registered voters in the area to be included in the CAD No. 19. Therefore, CAD No. 19 is not required to hold an election for inclusion of the Annex Area or imposition of the District's current sales and use tax within the area being included.

Petitioner agrees that this Petition for inclusion of real estate shall be filed with CAD No. 19 and considered by the District's Board of Directors at a public meeting. Petitioner also acknowledges that CAD No. 19's Board of Directors may enter an Order of Inclusion, and consent in advance of this Petition to include the Annex Area within the boundaries of CAD No. 19.

RESPECTFULLY SUBMITTED this \_\_\_\_\_ day of \_\_\_\_\_, 2022.

**FORT BEND COUNTY, TEXAS**

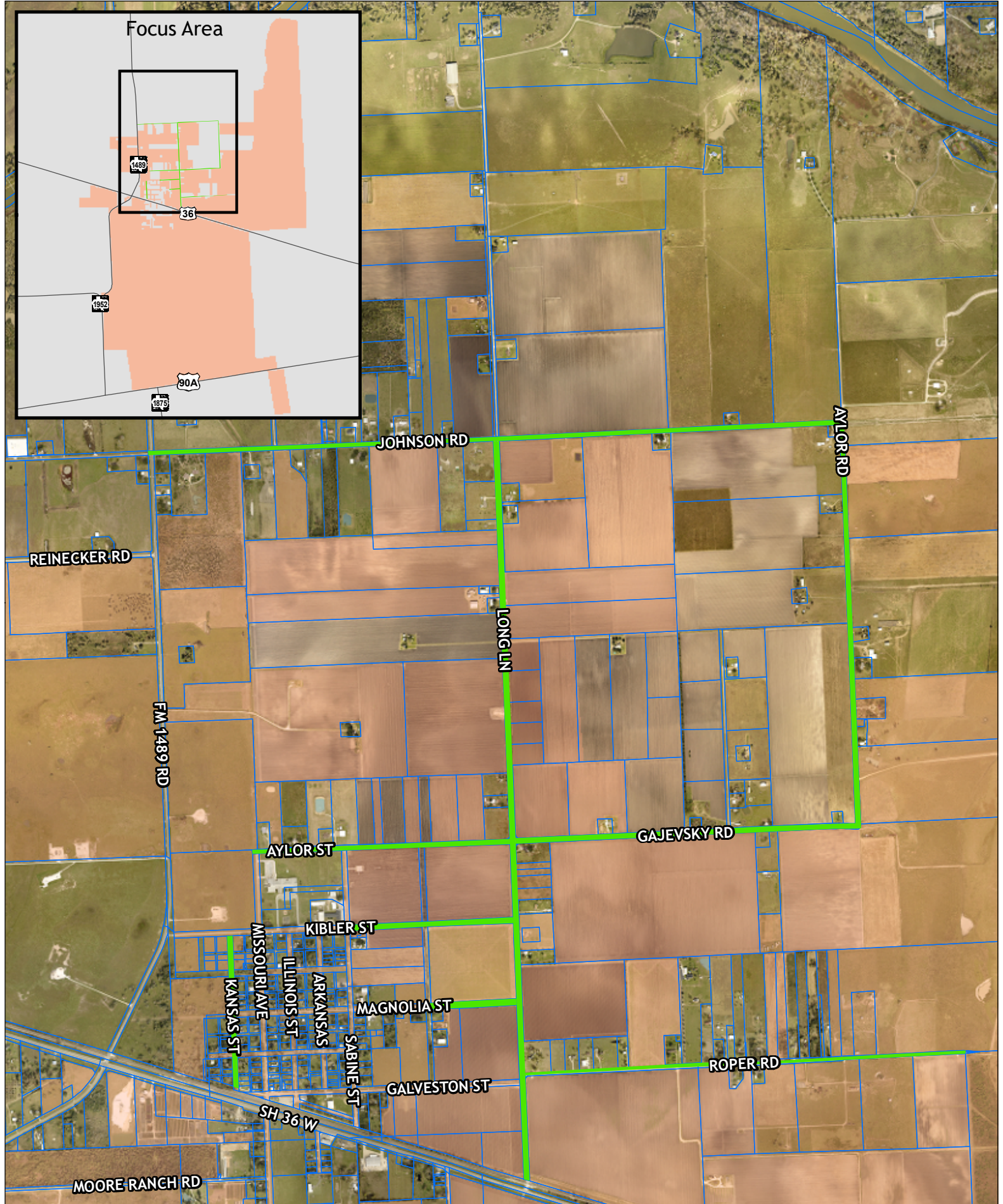
By: \_\_\_\_\_  
KP George, County Judge

Date: \_\_\_\_\_

ATTEST:

By: \_\_\_\_\_  
Laura Richard, County Clerk

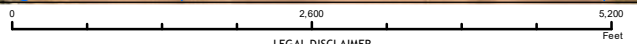
# EXHIBIT A



Map by:  
Engineering GIS  
March 2022

# CAD # 19 Annexation

- Legend
- ◆ Annex Area
  - ◆ CAD #19
  - ◆ Orchard City Limits



**LEGAL DISCLAIMER**  
This Geographic Information Systems (GIS) Data is a public resource of general information. The information contained was generated from GIS data maintained by Fort Bend County and different sources and agencies. The County of Fort Bend makes no warranty, representation, or guarantee as to the content sequence, accuracy, timeliness, or completeness of any of the spatial data or database information provided herein. The County of Fort Bend shall assume no liability for any errors, omissions, or inaccuracies in the information provided, regardless of how caused; or any decision made or action taken or not taken by any person relying on any information or data furnished within. If any errors are detected, please contact the GIS Division of Fort Bend County Engineering so those errors may be corrected.