

THE STATE OF TEXAS §
 §
COUNTY OF FORT BEND §

ORDER OF EXCLUSION AND DISANNEXATION

RECITALS

WHEREAS, a certain tract of land identified in Exhibit A, attached hereto and incorporated herein for all purposes and hereinafter referred to as the “De-Annex Area” is included within the original boundaries of Fort Bend County Assistance District No. 19 (“CAD No. 19”); and

WHEREAS, the Board of Directors of CAD No. 19 desires to exclude the De-Annex Area so as to be situated outside of the boundaries of CAD No. 19 and not included within the boundaries of CAD No. 19; and

WHEREAS, Section 387.003(j) of the Texas Local Government Code permits a commissioners court by order, to exclude an area from the district if the district has no outstanding bonds payable wholly or partly from sales and use taxes and the exclusion of the land does not impair any outstanding district debt or contractual obligation; and

WHEREAS, the Board of Directors of CAD No. 19 finds that there are no outstanding bonds payable wholly or partly from sales and use taxes, and the exclusion of the De-Annex Area does not impair any outstanding CAD No. 19 debt or contractual obligation; and

BE IT ORDERED BY THE COMMISSIONERS COURT SITTING AS THE BOARD OF DIRECTORS OF CAD NO. 19 THAT:

Section 1: The matters and facts set out in the preamble of this order are hereby found and declared to be true and complete and are incorporated herein.

Section 2: The Property is hereby excluded from the boundaries of CAD No. 19 by disannexation.

Section 3: This Order is effective immediately upon passage.

ADOPTED this _____ day of _____, 2022.

**FORT BEND COUNTY ASSISTANCE
DISTRICT NO. 19**

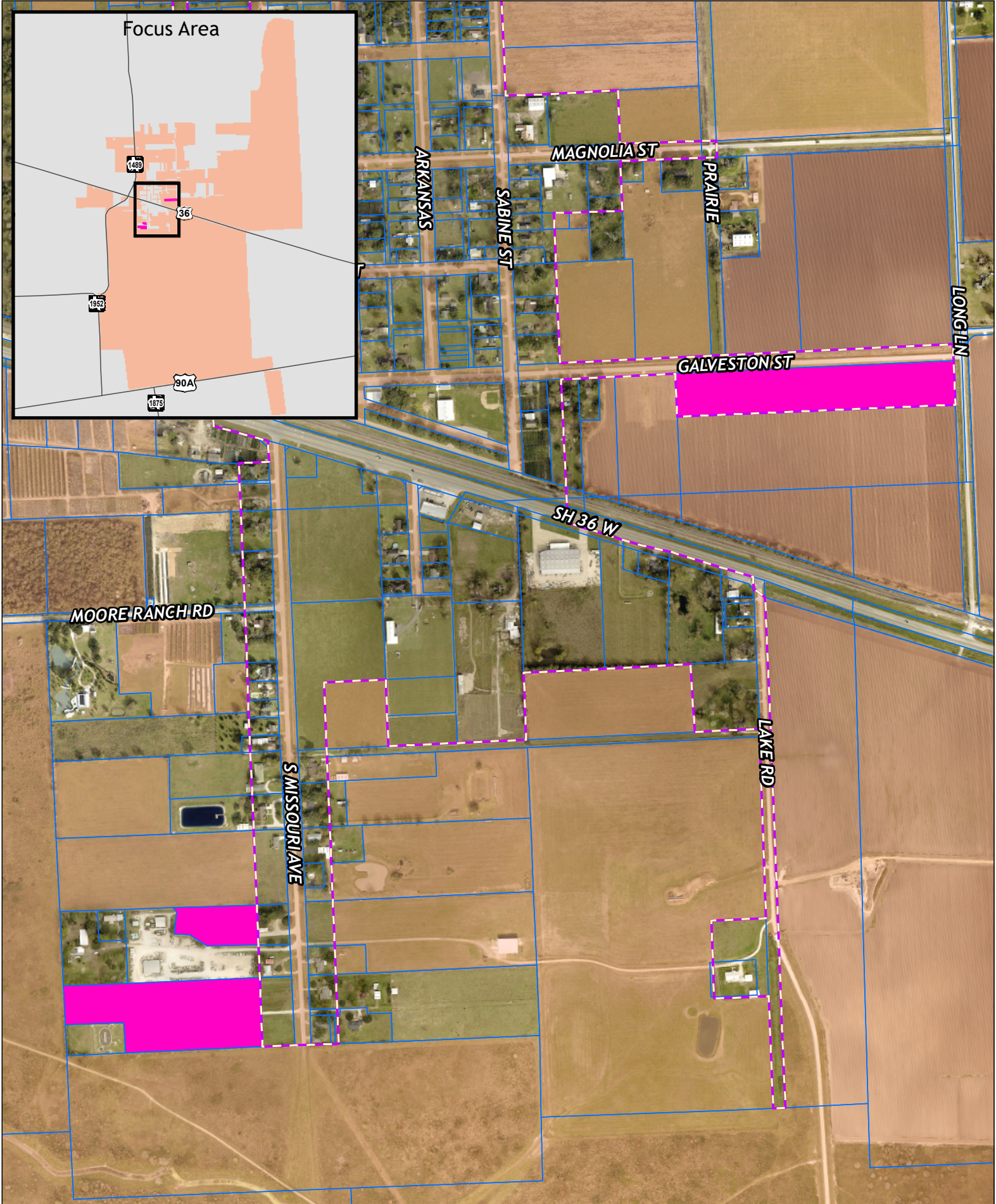
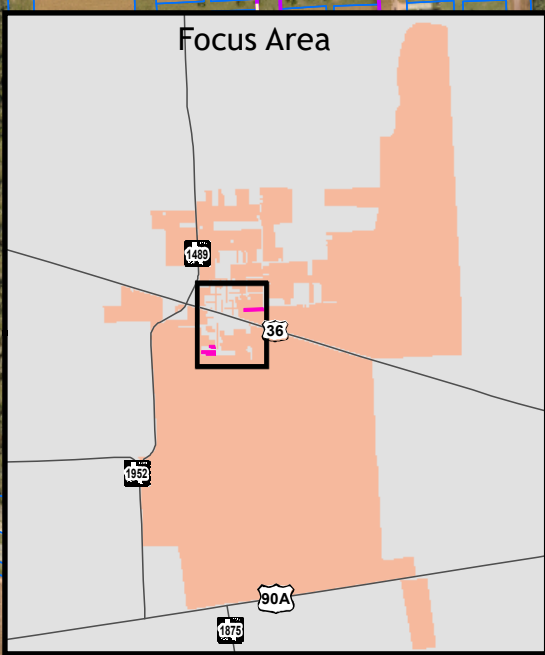
By: _____
KP George, County Judge

Date: _____

ATTEST:

By: _____
Laura Richard, County Clerk

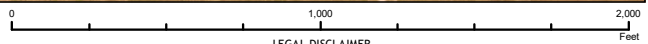
EXHIBIT A



Map by:
Engineering GIS
April 2022

CAD # 19 Deannexation

- Legend**
- ◆ De-Annex Area
 - ◆ CAD #19
 - Orchard City Limits



LEGAL DISCLAIMER
This Geographic Information Systems (GIS) Data is a public resource of general information. The information contained was generated from GIS data maintained by Fort Bend County and different sources and agencies. The County of Fort Bend makes no warranty, representation, or guarantee as to the content, sequence, accuracy, timeliness, or completeness of any of the spatial data or database information provided herein. The County of Fort Bend shall assume no liability for any errors, omissions, or inaccuracies in the information provided, regardless of how caused; or any decision made or action taken or not taken by any person relying on any information or data furnished within. If any errors are detected, please contact the GIS Division of Fort Bend County Engineering so those errors may be corrected.