



Fort Bend County Engineering
FORT BEND COUNTY, TEXAS

J. Stacy Slawinski, P.E.
County Engineer

January 31, 2022

Judge KP George
Fort Bend County Judge
301 Jackson Street
Richmond, Texas 77469

RE: Major Thoroughfare Plan modifications to Madden Road

Dear Judge George:

Fort Bend County Engineering respectfully requests modifications to the Fort Bend County Major Thoroughfare Plan (MTP). The street lies within the City of Houston Extraterritorial Jurisdiction. The City of Houston updates their Major Thoroughfare and Freeway Plan once a year, beginning in March. If approved, an amendment would be presented to the City of Houston in 2022 for formal action. The requested modifications are as follows:

- **Madden Road** – remove the proposed Collector alignment from approximately Binion Lane west to Harlem Road

A copy of the map is attached for your review. The public hearing date for acceptance of the change is being scheduled. If you should have any questions, please give me a call 281-633-7515.

Sincerely,




A handwritten signature in cursive script, appearing to read "Maggie Dalton".

Maggie Dalton
Development Services Manager

MD/mjs

cc: Commissioner Vincent M. Morales, Jr., Pct. 1
Commissioner Grady Prestage, Pct. 2
Commissioner W. A. Andy Meyers, Pct. 3
Commissioner Ken DeMerchant, Pct. 4
Mr. J. Stacy Slawinski, P.E., County Engineer
File

LEGEND

-  Existing Major Thoroughfare
 Future Major Thoroughfare
 Existing Collector
 Future Collector



EXISTING ALIGNMENTS FORT BEND COUNTY MTP 2015

THIS DRAWING IS A GRAPHIC REPRESENTATION FOR PRESENTATION PURPOSES ONLY AND IS NOT FOR COMPUTATION OR CONSTRUCTION PURPOSES. SAID DRAWING IS A SCANNED IMAGE ONLY AND IS SUBJECT TO CHANGE WITHOUT NOTICE. META PLANNING + DESIGN MAY OR MAY NOT INTEGRATE ADDITIONAL INFORMATION PROVIDED BY OTHER CONSULTANTS, INCLUDING BUT NOT LIMITED TO THE TOPICS OF ENGINEERING AND DRAINAGE, FLOODPLAINS, AND/OR ENVIRONMENTAL ISSUES AS THEY RELATE TO THIS DRAWING. NO WARRANTIES, EXPRESSED OR IMPLIED, CONCERNING THE PHYSICAL DESIGN, LOCATION, AND CHARACTER OF THE FACILITIES SHOWN ON THIS MAP ARE INTENDED. ADDITIONALLY, NO WARRANTY IS MADE TO THE ACCURACY OF THE INFORMATION CONTAINED HEREIN.

© 2021 META PLANNING + DESIGN, ALL RIGHTS RESERVED

an mtp amendment exhibit for

MADDEN ROAD

±425.4 ACRES OF LAND

prepared for


JDS COMPANIES

META
PLANNING + DESIGN

**24275 Katy Freeway, Ste. 200
Katy, Texas 77494
Tel: 281-810-1422**

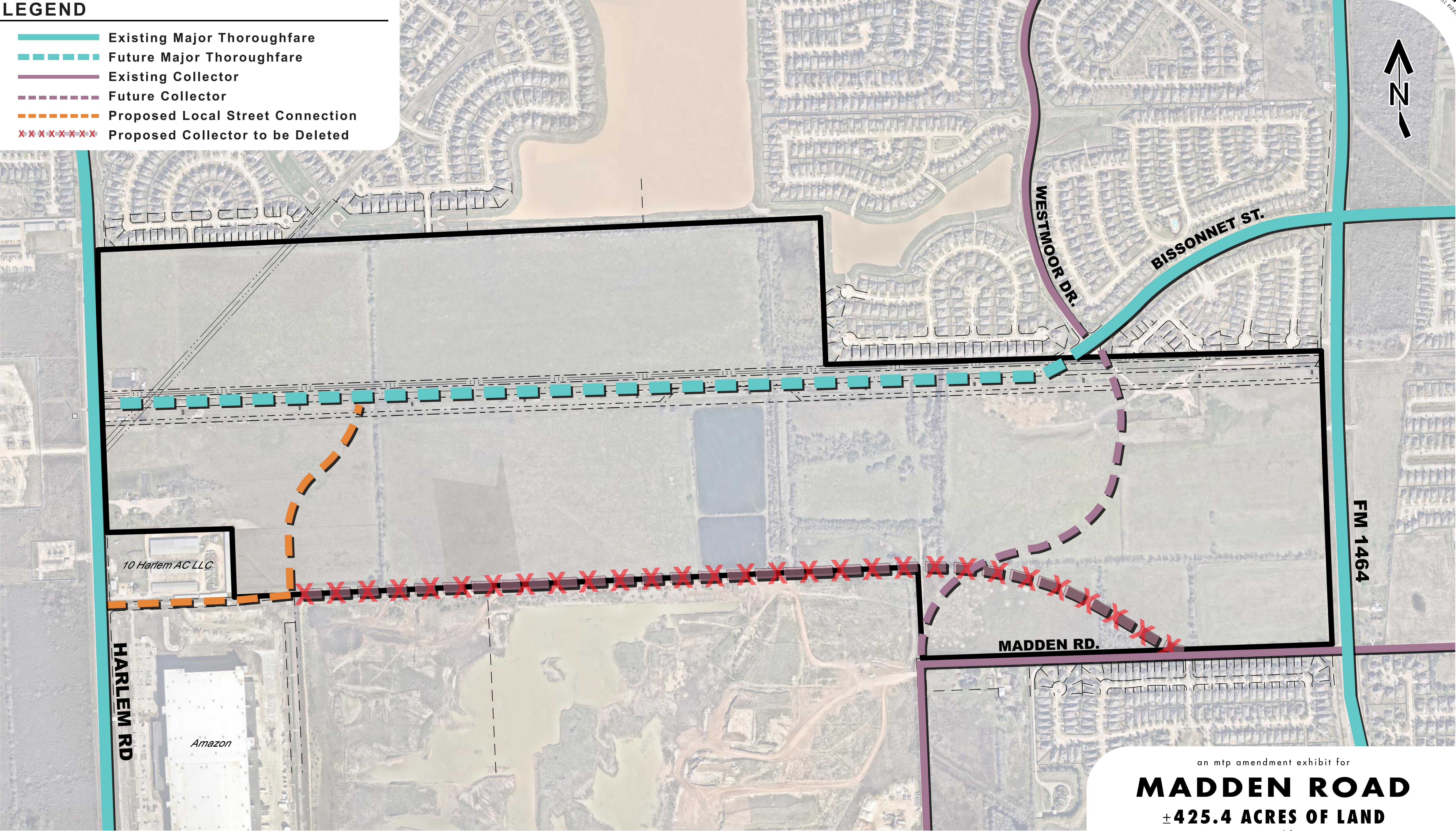
MTA-54003
DECEMBER 21, 2021

SCALE



LEGEND

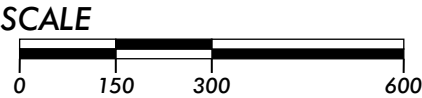
- Existing Major Thoroughfare
- Future Major Thoroughfare
- Existing Collector
- Future Collector
- Proposed Local Street Connection
- Proposed Collector to be Deleted



an mtp amendment exhibit for
MADDEN ROAD
± 425.4 ACRES OF LAND
prepared for
JDS COMPANIES



24275 Katy Freeway, Ste. 200
Katy, Texas 77494
Tel: 281-810-1422



MTA-54003
DECEMBER 21, 2021

PROPOSED MTP AMENDMENTS
MADDEN RD.

THIS DRAWING IS A GRAPHIC REPRESENTATION FOR PRESENTATION PURPOSES ONLY AND IS NOT FOR COMPUTATION OR CONSTRUCTION PURPOSES. SAID DRAWING IS A SCANNED IMAGE ONLY AND IS SUBJECT TO CHANGE WITHOUT NOTICE. META PLANNING + DESIGN MAY OR MAY NOT INTEGRATE ADDITIONAL INFORMATION PROVIDED BY OTHER CONSULTANTS, INCLUDING BUT NOT LIMITED TO THE TOPICS OF ENGINEERING AND DRAINAGE, FLOODPLAINS, AND/OR ENVIRONMENTAL ISSUES AS THEY RELATE TO THIS DRAWING. NO WARRANTIES, EXPRESSED OR IMPLIED, CONCERNING THE PHYSICAL DESIGN, LOCATION, AND CHARACTER OF THE FACILITIES SHOWN ON THIS MAP ARE INTENDED. ADDITIONALLY, NO WARRANTY IS MADE TO THE ACCURACY OF THE INFORMATION CONTAINED HEREIN.