



UTILITY & PAVING CONTRACTOR

1702 SETTEGAST RANCH ROAD, RICHMOND, TX 77406

832-847-4071 TELEPHONE * (281) 261-5565 FAX

Allgood Construction Company Inc.
1702 Settegast Ranch Rd
Richmond, TX 77406

January 10, 2022

Fort Bend County Engineering
301 Jackson St.
Richmond, TX 469

RE: Katy Flewellen Rd – Willow Ln Closure

Allgood Construction would like to request the proposed road closure for Willow Ln for the project "Reconstruction of Katy Flewellen Rd from Willow Ln to Gaston Rd, Mobility Project 13316."

The proposed plans show a road closure for Willow Ln at Katy Flewellen during Phase 2 Step 2 of the project. The closure is to complete the proposed pavement for the intersection at Willow Ln and Katy Flewellen Rd. The closure is estimated to be in place for four weeks, road closure would begin February 1, 2022.

Thank you,

A handwritten signature in blue ink that reads "Michael Boenig". The signature is written in a cursive style.

Michael Boenig
Allgood Construction Co. Inc.

FORT BEND COUNTY ENGINEERING DEPARTMENT

RECONSTRUCTION OF KATY FLEWELLEN ROAD
FROM WILLOW LANE TO GASTON ROAD

PROJECT NO. 13316

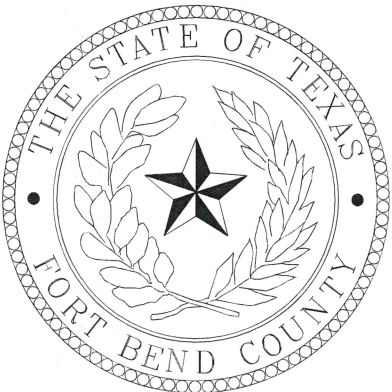
VINCENT M. MORALES, JR.
PRECINCT 1

GRADY PRESTAGE
COMMISSIONER
PRECINCT 2

KP GEORGE
COUNTY JUDGE

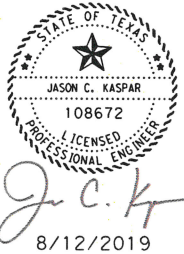
ANDY MEYERS
COMMISSIONER
PRECINCT 3

KEN R. DeMERCHANT
COMMISSIONER
PRECINCT 4

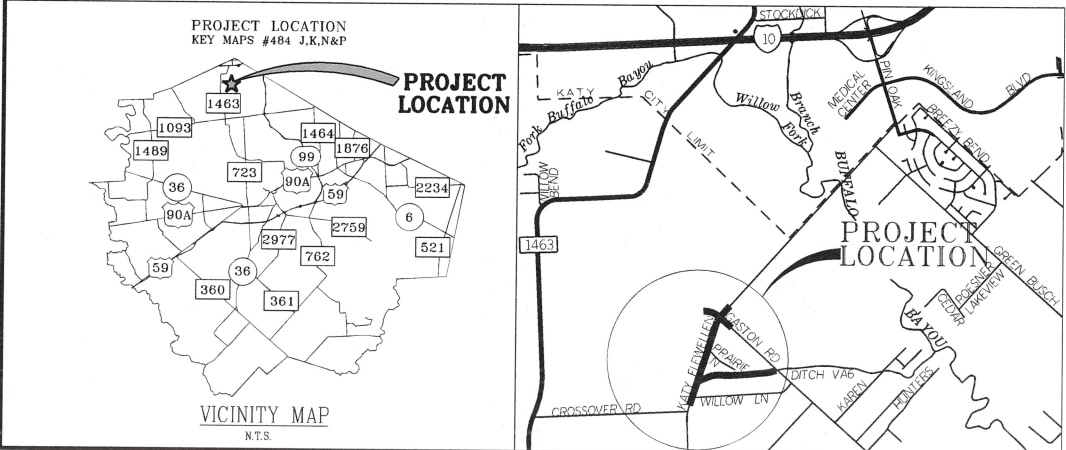


AUGUST 2019
PRECINCT 3

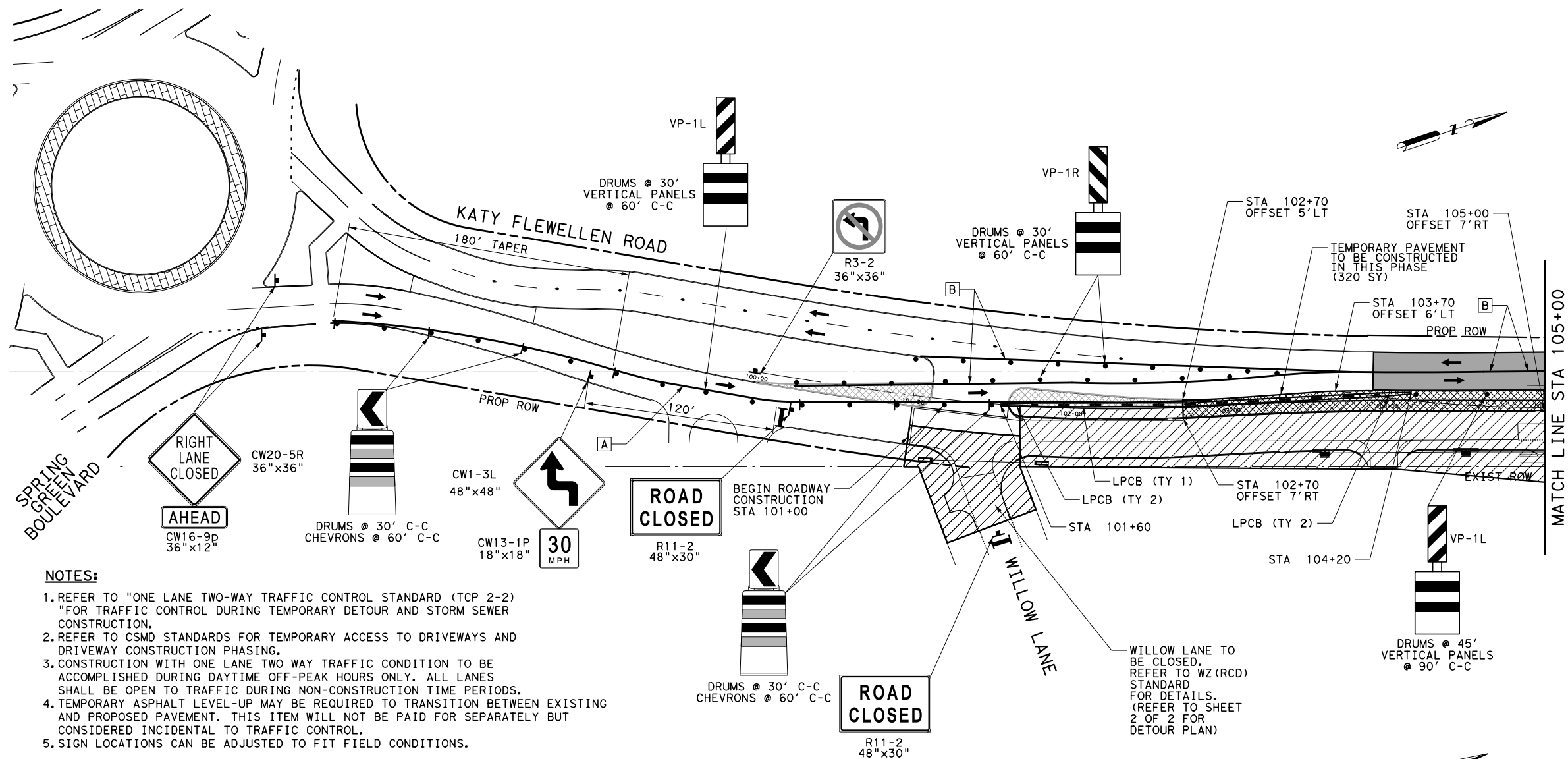
Fort Bend County, Texas



J. Stacy Slawinski 10/07/19
COUNTY ENGINEER
J. STACY SLAWINSKI, P.E. DATE

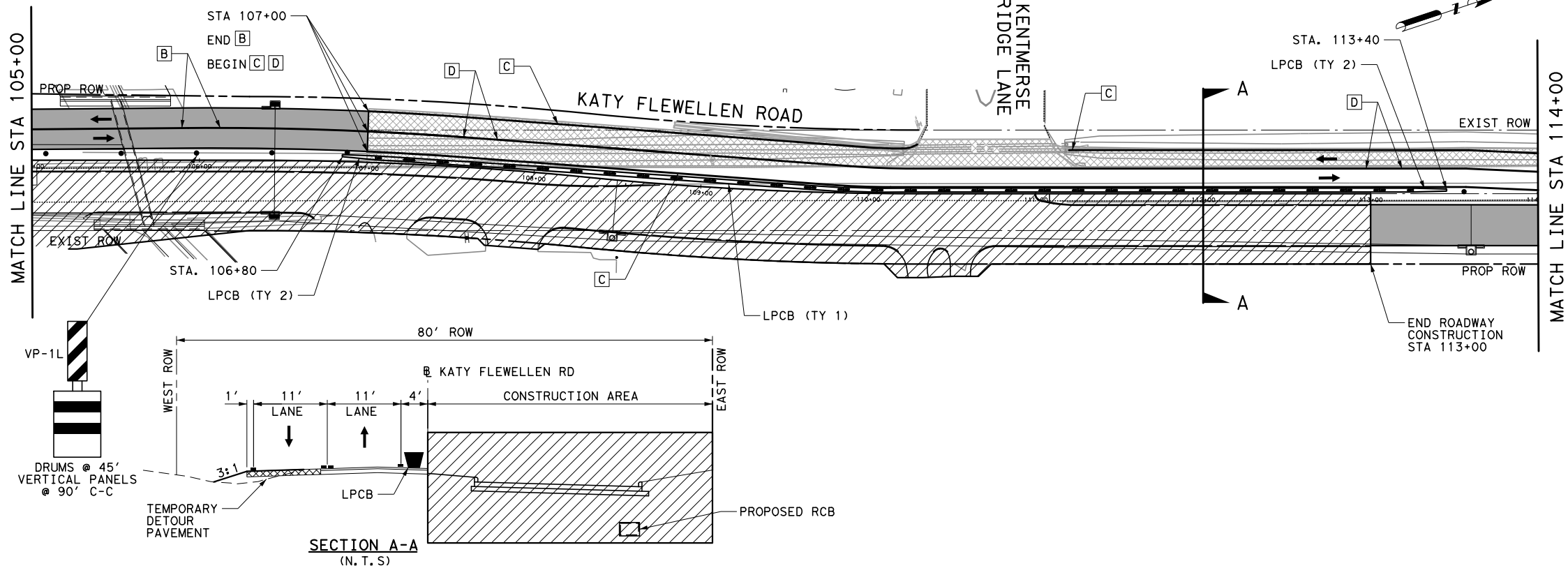


FILE: ...\\CADD\\EPIC\\TCP22*1.dgn
DATE: 7/30/2019 10:57:20 AM



NOTES:

1. REFER TO "ONE LANE TWO-WAY TRAFFIC CONTROL STANDARD (TCP 2-2)" FOR TRAFFIC CONTROL DURING TEMPORARY DETOUR AND STORM SEWER CONSTRUCTION.
2. REFER TO CSMD STANDARDS FOR TEMPORARY ACCESS TO DRIVEWAYS AND DRIVEWAY CONSTRUCTION PHASING.
3. CONSTRUCTION WITH ONE LANE TWO WAY TRAFFIC CONDITION TO BE ACCOMPLISHED DURING DAYTIME OFF-PEAK HOURS ONLY. ALL LANES SHALL BE OPEN TO TRAFFIC DURING NON-CONSTRUCTION TIME PERIODS.
4. TEMPORARY ASPHALT LEVEL-UP MAY BE REQUIRED TO TRANSITION BETWEEN EXISTING AND PROPOSED PAVEMENT. THIS ITEM WILL NOT BE PAID FOR SEPARATELY BUT CONSIDERED INCIDENTAL TO TRAFFIC CONTROL.
5. SIGN LOCATIONS CAN BE ADJUSTED TO FIT FIELD CONDITIONS.



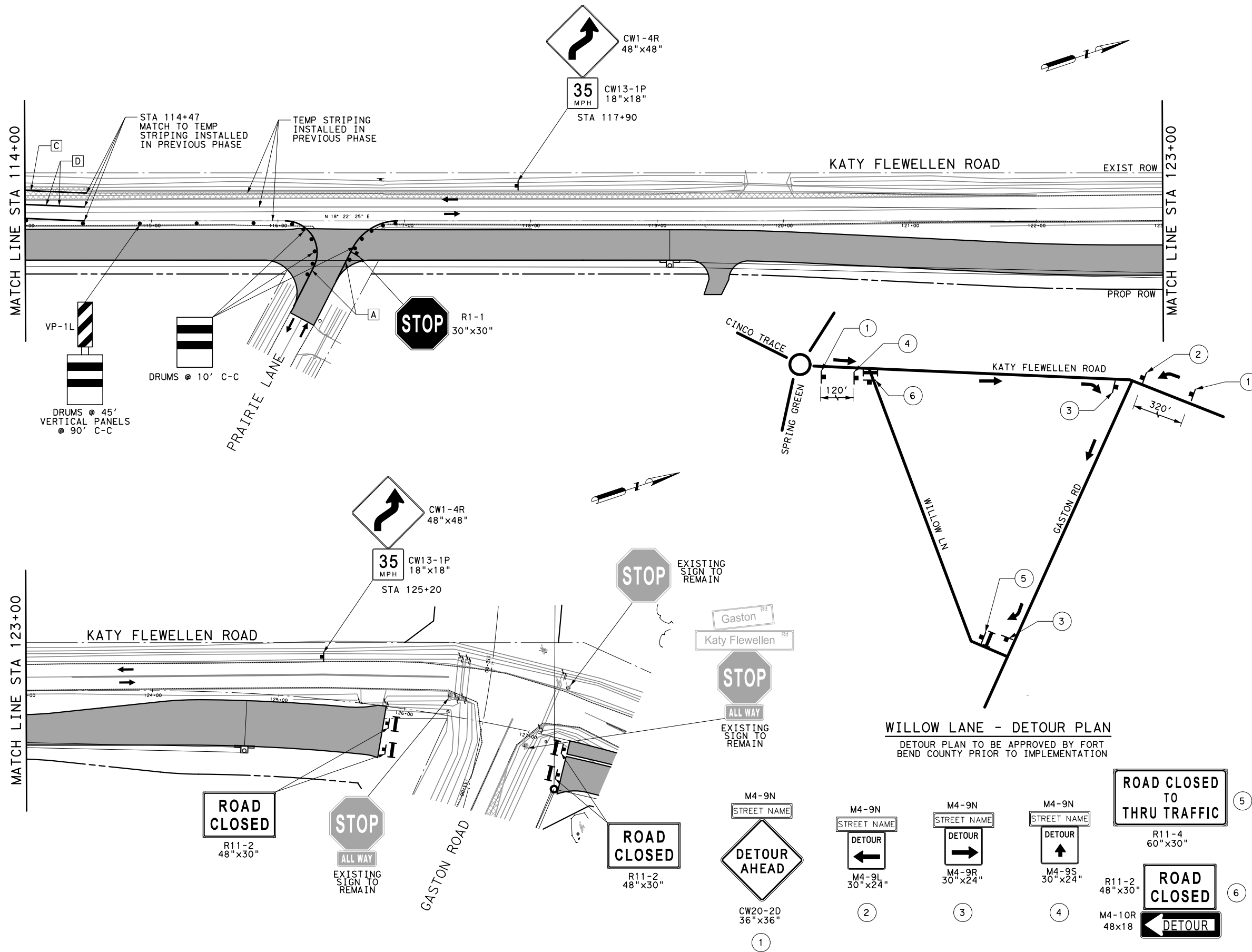
LEGEND

- TEMPORARY DETOUR PAVEMENT (2" H.M.H.L. SURFACE WITH 6" BLACKBASE OVER COMPACTED SUBGRADE)
- CONSTRUCTION AREA
- CONSTRUCTED IN PREVIOUS PHASE
- DIRECTION OF TRAFFIC FLOW SIGN ON POST
- DRUMS WITH CHEVRONS (UNLESS OTHERWISE NOTED)
- DRUMS WITH VERTICAL PANELS (UNLESS OTHERWISE NOTED)
- LOW PROFILE CONCRETE BARRIER (LPCB)
- TYPE III BARRICADE WITH TWO TYPE A WARNING LIGHTS
- WRK ZN PAV MRK REMOV (W) 4" (SLD)
- WRK ZN PAV MRK REMOV (Y) 4" (SLD)
- WRK ZN PAV MRK NON-REMOV (W) 4" (SLD)
- WRK ZN PAV MRK NON-REMOV (Y) 4" (SLD)
- WRK ZN PAV MRK REMOV (W) 4" (DOT)
- WRK ZN PAV MRK REMOV (Y) 4" (DOT)
- WRK ZN PAV MRK NON-REMOV (Y) 4" (BRK)
- WRK ZN PAV MRK REMOV (Y) 4" (BRK)
- WRK ZN PAV MRK REMOV (W) 24" (SLD)
- WRK ZN PAV MRK REMOV (W) (ARROW)
- WRK ZN PAV MRK REMOV (W) (WORD)



NO.	DATE	REVISION	APP.
TBPE FIRM F-11000 EPIC TRANSPORTATION GROUP, LP Engineering • Planning • Infrastructure • Construction 800 West Drive, Suite 240, Houston, TX 77042 Ph: (713) 609-9416			
DESIGNED BY: EPIC		DRAWN BY: EPIC	
CHECKED BY: EPIC		CHECKED BY: EPIC	
 7/30/19			
FORT BEND COUNTY ENGINEERING DEPARTMENT			
RECONSTRUCTION OF KATY FLEWELLEN ROAD FROM WILLOW LN TO GASTON RD			
TRAFFIC CONTROL PLAN PHASE 2 STEP 2 BEGIN PROJECT TO STA 114+00 SHEET 1 OF 2			
PROJECT NO. FORT BEND COUNTY PM		SHEET NO. 99	
DATE 7/30/2019		SHEET NO. 99	

...\\CADD\\EPIC\\TCP22*1.dgn



LEGEND

- TEMPORARY DETOUR PAVEMENT (2" H.M.H.L. SURFACE WITH 6" BLACKBASE OVER COMPACTED SUBGRADE)
- CONSTRUCTION AREA
- CONSTRUCTED IN PREVIOUS PHASE
- DIRECTION OF TRAFFIC FLOW
- SIGN ON POST
- DRUMS WITH CHEVRONS (UNLESS OTHERWISE NOTED)
- DRUMS WITH VERTICAL PANELS (UNLESS OTHERWISE NOTED)
- LOW PROFILE CONCRETE BARRIER (LPCB)
- TYPE III BARRICADE WITH TWO TYPE A WARNING LIGHTS
- WRK ZN PAV MRK REMOV (W) 4" (SLD)
- WRK ZN PAV MRK REMOV (Y) 4" (SLD)
- WRK ZN PAV MRK NON-REMOV (W) 4" (SLD)
- WRK ZN PAV MRK NON-REMOV (Y) 4" (SLD)
- WRK ZN PAV MRK REMOV (W) 4" (DOT)
- WRK ZN PAV MRK REMOV (Y) 4" (DOT)
- WRK ZN PAV MRK NON-REMOV (Y) 4" (BRK)
- WRK ZN PAV MRK REMOV (Y) 4" (BRK)
- WRK ZN PAV MRK REMOV (W) 24" (SLD)
- WRK ZN PAV MRK REMOV (W) (ARROW)
- WRK ZN PAV MRK REMOV (W) (WORD)

0 40 80

NO	DATE	REVISION	APP

NO DATE REVISION APP

EPIC TRANSPORTATION GROUP, LP
Engineering • Planning • Infrastructure • Construction
800 West Drive, Suite 240, Houston, TX 77042
Ph: (713) 603-9416

DESIGNED BY: EPIC
CHECKED BY: EPIC

DRAWN BY: EPIC
CHECKED BY: EPIC

STATE OF TEXAS
HARISH NARAYANAPPA
82041
REGISTERED PROFESSIONAL ENGINEER
1/15/19

FORT BEND COUNTY
ENGINEERING DEPARTMENT

RECONSTRUCTION OF
KATY FLEWELLEN ROAD
FROM WILLOW LN TO GASTON RD
TRAFFIC CONTROL PLAN
PHASE 2 STEP 2
STA 114+00 TO STA 125+00

PROJECT NO.
FORT BEND COUNTY PM

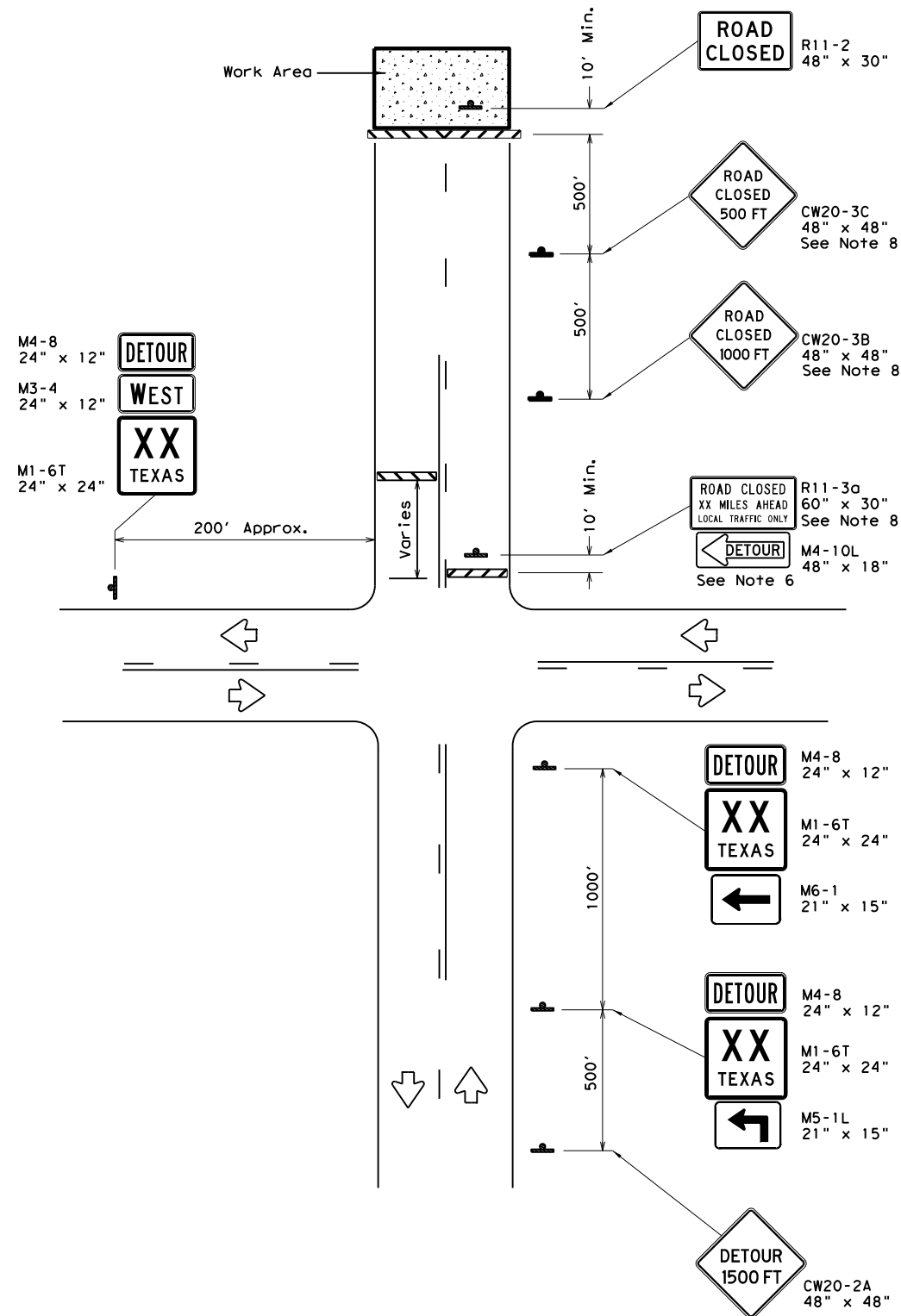
DATE
1/15/2019

SHEET NO.
100

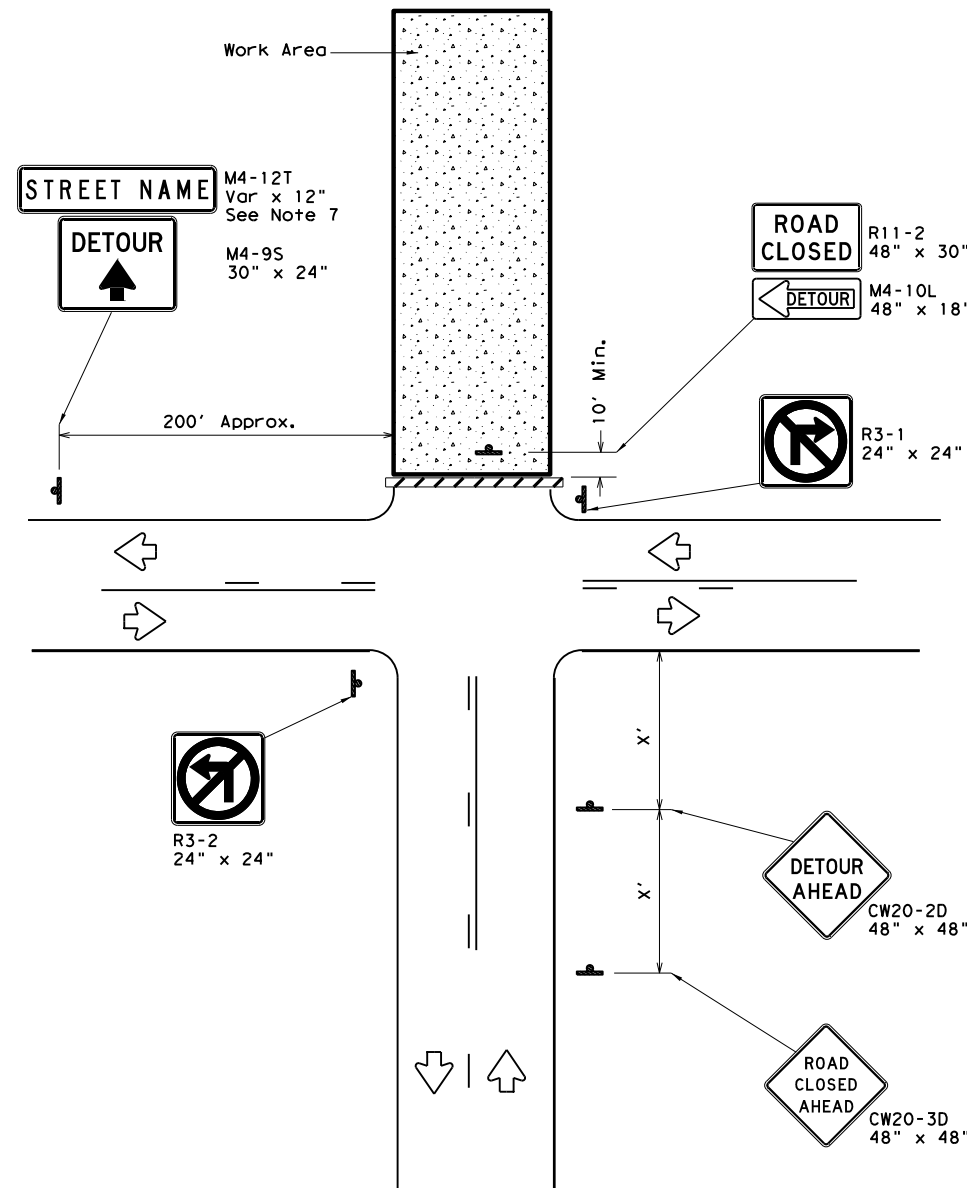
SHEET 2 OF 2

DISCLAIMER: The use of this standard is governed by the "Texas Engineering Practice Act". No warranty of any kind is made by TxDOT for any purpose whatsoever. TxDOT assumes no responsibility for the conversion of this standard to other formats or for incorrect results or damages resulting from its use.

DATE:
FILE:



ROAD CLOSURE BEYOND THE INTERSECTION
Signing for a Numbered Route with an Off-Site Detour



ROAD CLOSURE AT THE INTERSECTION
Signing for an Un-numbered Route with an Off-Site Detour

LEGEND	
	Type 3 Barricade
	Sign

Posted Speed *	Minimum Sign Spacing "x" Distance
30	120'
35	160'
40	240'
45	320'
50	400'
55	500'
60	600'
65	700'
70	800'
75	900'

* Conventional Roads Only

GENERAL NOTES

1. This sheet is intended to provide details for temporary work zone road closures. For permanent road closure details see the D&OM standards.
2. Barricades used shall meet the requirements shown on Barricade and Construction Standard BC(10) and listed on the Compliant Work Zone Traffic Control Devices List (CWZTCD).
3. Stockpiled materials shall not be placed on the traffic side of barricades.
4. Barricades at the road closure should extend from pavement edge to pavement edge.
5. Detour signing shown is intended to illustrate the type of signing that is appropriate for numbered routes or un-numbered routes as labeled. It does not indicate the full extent of detour signing required. Detour routes should be signed as shown elsewhere in the plans.
6. If the road is open for a significant distance beyond the intersection or there are significant origin/destination points beyond the intersection, the signs and barricades at this location should be located at the edge of the traveled way.
7. The Street Name (M4-12T) sign is to be placed above the DETOUR (M4-9S) sign.
8. For urban areas where there is a shorter distance between the intersection and the actual closure location, the ROAD CLOSED XX MILES AHEAD (R11-3a) sign may be replaced with a ROAD CLOSED TO THRU TRAFFIC (R11-4) sign. If adequate space does not exist between the intersection and the closure a single ROAD CLOSED AHEAD (CW20-3D) sign spaced as per the table above may replace the ROAD CLOSED 1000 FT (CW20-3B) and ROAD CLOSED 500 FT (CW20-3C) signs.
9. Signs and barricades shown shall be subsidiary to Item 502. Locations where these details will be required shall be as shown elsewhere in the plans.

		Traffic Operations Division Standard	
WORK ZONE ROAD CLOSURE DETAILS			
WZ (RCD) - 13			
FILE: wzrcd-13.dgn	DN: TxDOT	CK: TxDOT	DW: TxDOT
© TxDOT August 1995	CONT	SECT	JOB
REVISIONS		HIGHWAY	
1-97 4-98 7-13	DIST	COUNTY	SHEET NO.
2-98 3-03			121