

**PLAT RECORDING SHEET**

**PLAT NAME:** Sienna Section 19

\_\_\_\_\_

**PLAT NO:** \_\_\_\_\_

**ACREAGE:** 26.028

\_\_\_\_\_

**LEAGUE:** David Fitzgerald League and William Hall Survey

\_\_\_\_\_

**ABSTRACT NUMBER:** 25 and 31

\_\_\_\_\_

**NUMBER OF BLOCKS:** 1

\_\_\_\_\_

**NUMBER OF LOTS:** 54

\_\_\_\_\_

**NUMBER OF RESERVES:** 7

\_\_\_\_\_

**OWNERS:** Toll-Gtis Property Owner, LLC and Sienna Municipal Utility District No. 5

\_\_\_\_\_

\_\_\_\_\_

\_\_\_\_\_

\_\_\_\_\_

\_\_\_\_\_

\_\_\_\_\_

\_\_\_\_\_

\_\_\_\_\_

\_\_\_\_\_  
**(DEPUTY CLERK)**







CURVE TABLE				
CURVE	RADIUS	DELTA	ARC	CHORD BEARING CHORD
C1	935.00'	11°08'28"	181.81'	S 81°58'45" W 181.52'
C2	125.00'	87°59'14"	191.96'	N 59°35'52" W 173.64'
C3	840.00'	3°55'39"	57.58'	N 17°34'04" W 57.57'
C4	600.00'	4°09'32"	43.55'	N 21°36'40" W 43.54'
C5	600.00'	4°09'32"	43.55'	N 21°36'40" W 43.54'
C6	1830.00'	11°35'19"	370.14'	N 25°19'34" W 369.51'
C7	450.00'	33°25'39"	262.54'	N 19°09'51" W 258.83'
C8	450.00'	21°47'08"	171.10'	N 76°39'25" E 170.07'
C9	2000.00'	5°44'40"	200.52'	N 51°15'00" E 200.43'
C10	2000.00'	3°04'51"	107.54'	N 55°39'45" E 107.52'
C11	500.00'	21°46'18"	189.99'	N 43°14'11" E 188.85'
C12	25.00'	90°00'00"	39.27'	N 42°32'59" E 35.36'
C13	500.00'	8°53'14"	77.55'	N 01°59'36" E 77.48'
C14	200.00'	15°47'36"	55.13'	N 01°27'36" W 54.95'
C15	420.00'	19°41'10"	144.31'	N 19°11'59" W 143.60'
C16	25.00'	97°33'56"	42.57'	N 77°49'32" W 37.61'
C17	1975.00'	5°00'50"	172.83'	S 50°53'05" W 172.78'
C18	25.00'	48°11'23"	21.03'	S 24°16'59" W 20.41'
C19	50.00'	27°22'46"	241.19'	N 41°37'20" W 66.67'
C20	25.00'	48°11'23"	21.03'	N 72°28'22" E 20.41'
C21	2025.00'	5°07'41"	181.24'	N 50°56'31" E 181.18'
C22	25.00'	89°23'01"	39.00'	N 08°48'51" E 35.16'
C23	25.00'	90°00'00"	39.27'	N 80°52'40" W 35.36'
C24	2025.00'	3°04'51"	108.88'	S 55°39'45" W 108.87'
C25	25.00'	48°11'23"	21.03'	S 33°06'29" W 20.41'

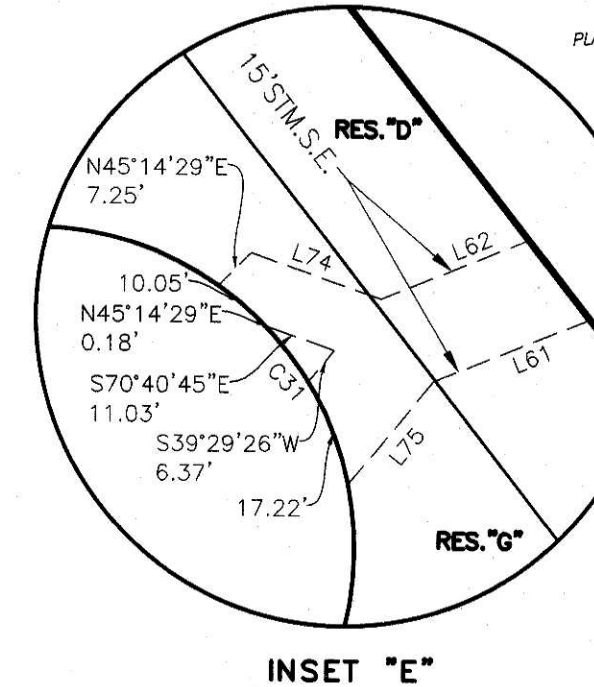
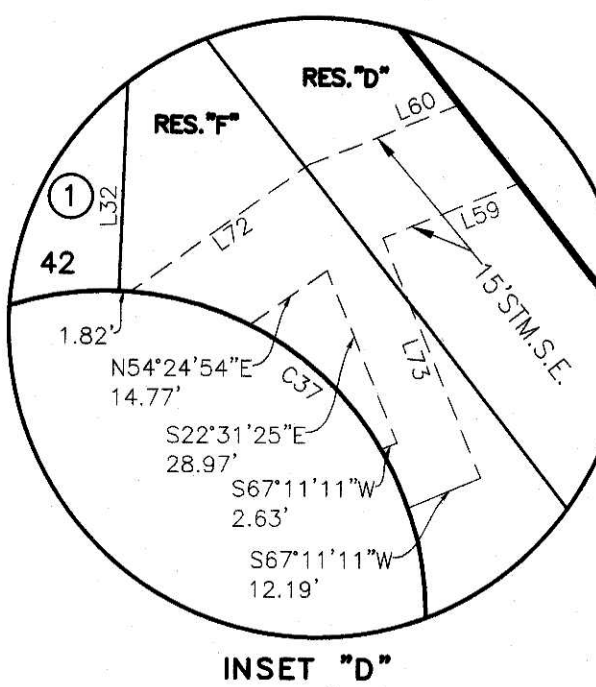
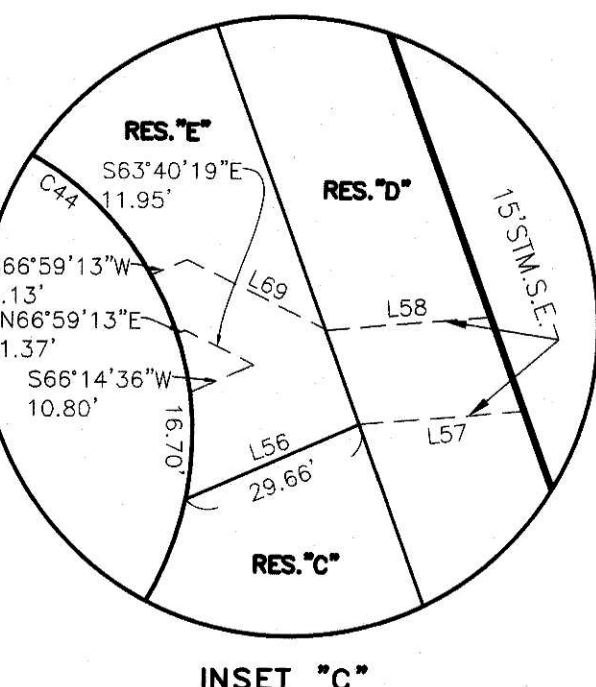
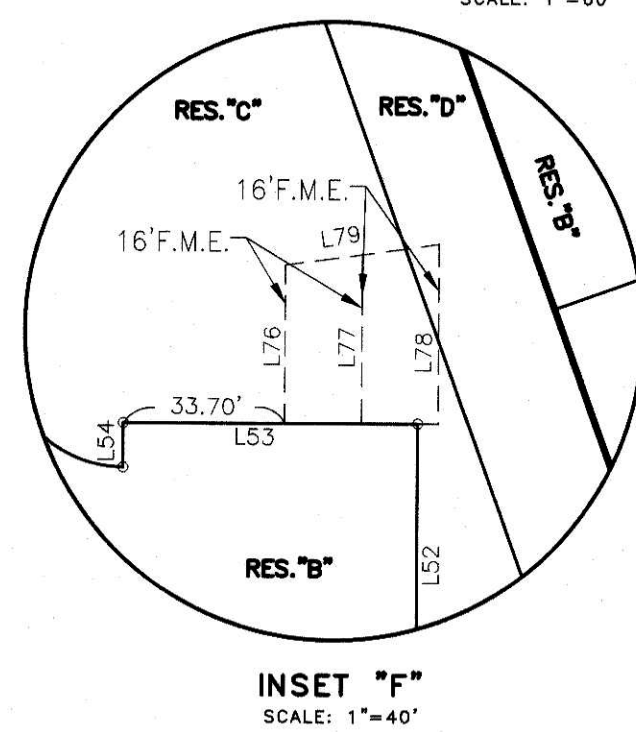
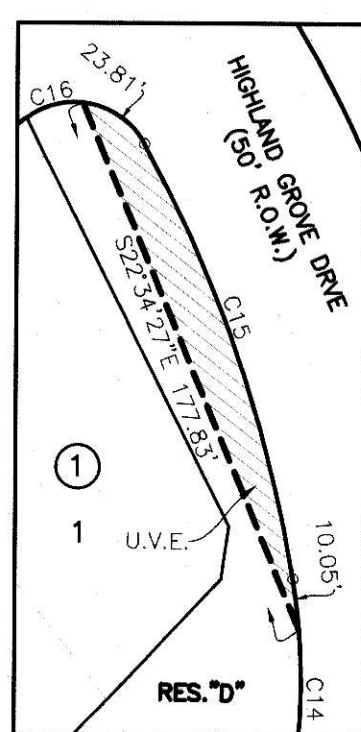
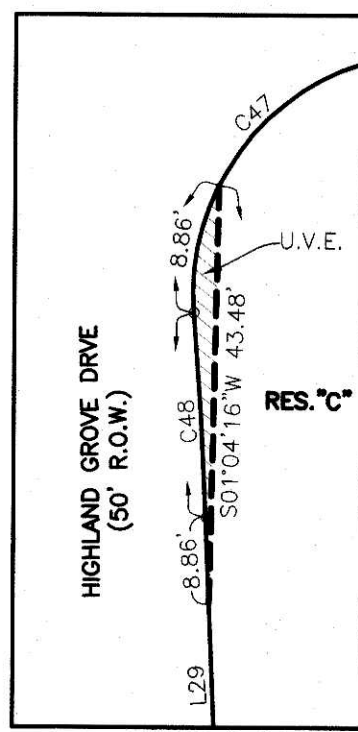
CURVE TABLE				
CURVE	RADIUS	DELTA	ARC	CHORD BEARING CHORD
C26	50.00'	27°22'46"	241.19'	N 32°47'49" W 66.67'
C27	25.00'	48°11'23"	21.03'	N 81°17'52" E 20.41'
C28	1975.00'	3°04'51"	106.19'	N 55°39'45" E 106.18'
C29	475.00'	19°18'55"	160.13'	N 44°27'52" E 159.37'
C30	25.00'	43°36'51"	19.03'	N 12°59'59" E 18.57'
C31	50.00'	27°22'46"	240.97'	S 50°44'40" E 66.83'
C32	25.00'	51°42'06"	22.56'	S 61°28'04" W 21.80'
C33	525.00'	18°30'19"	169.56'	S 44°52'11" W 168.83'
C34	25.00'	90°00'00"	39.27'	S 09°07'20" W 35.36'
C35	25.00'	90°00'00"	39.27'	S 80°52'40" E 35.36'
C36	25.00'	37°40'07"	16.44'	N 35°17'12" E 16.14'
C37	50.00'	27°22'46"	239.86'	S 26°06'51" E 67.65'
C38	25.00'	57°11'44"	24.96'	S 82°43'12" W 23.93'
C39	25.00'	84°40'36"	36.95'	S 11°47'02" W 33.68'
C40	480.00'	21°01'07"	176.09'	S 20°02'43" E 175.10'
C41	25.00'	82°54'52"	36.18'	S 50°39'35" E 33.10'
C42	425.00'	21°47'08"	161.60'	N 76°39'25" E 160.63'
C43	25.00'	48°11'23"	21.03'	N 41°40'09" E 20.41'
C44	50.00'	27°22'46"	241.19'	S 24°14'09" E 66.67'
C45	25.00'	48°11'23"	21.03'	S 89°51'32" W 20.41'
C46	475.00'	21°47'08"	180.61'	S 76°39'25" W 179.52'
C47	25.00'	92°26'38"	40.34'	S 41°19'40" W 36.10'
C48	500.00'	2°28'38"	21.33'	S 03°40'20" E 21.33'
C49	25.00'	90°00'00"	39.27'	S 47°27'01" E 35.36'
C50	25.00'	90°00'00"	39.27'	N 45°00'00" W 35.36'

LINE TABLE		
LINE	BEARING	DISTANCE
L1	N 58°52'47" E	34.23'
L2	S 69°19'44" E	113.68'
L3	S 88°34'28" E	75.86'
L4	N 43°48'23" E	81.96'
L5	N 51°06'52" E	49.16'
L6	N 62°33'33" E	168.06'
L7	N 57°11'48" E	77.52'
L8	N 58°32'36" E	87.83'
L9	N 58°20'09" E	59.13'
L10	N 35°41'47" E	67.16'
L11	N 36°09'04" E	108.62'
L12	N 26°21'09" E	45.75'
L13	N 31°25'08" E	115.27'
L14	N 52°02'51" E	25.00'
L15	N 19°31'54" W	19.88'
L16	N 23°41'26" W	94.31'
L17	N 19°31'54" W	99.74'
L18	N 87°32'59" E	70.51'
L19	S 35°52'40" E	9.37'
L20	N 32°21'02" E	30.07'
L21	S 57°38'58" E	6.05'
L22	N 02°27'01" W	34.61'
L23	S 48°22'40" W	66.48'
L24	N 48°22'40" E	66.48'
L25	S 54°07'20" W	78.29'
L26	S 09°32'09" E	21.76'
L27	N 87°32'59" E	16.89'
L28	S 87°32'59" W	5.99'
L29	S 02°27'01" E	34.61'
L30	N 25°37'47" E	50.81'
L31	S 77°59'41" E	49.56'
L32	N 02°05'04" E	54.13'
L33	S 76°23'47" E	55.33'
L34	N 00°29'10" E	55.34'
L35	S 25°47'39" W	94.57'
L36	S 63°33'21" W	110.88'
L37	S 49°26'28" W	108.36'
L38	S 25°13'59" W	65.46'
L39	S 19°52'30" W	20.00'
L40	S 70°24'44" E	103.70'

LINE TABLE		
LINE	BEARING	DISTANCE
L41	S 68°35'33" E	81.14'
L42	S 64°51'57" W	20.00'
L43	N 78°22'24" E	19.16'
L44	N 08°23'46" E	16.51'
L45	N 48°20'26" E	65.79'
L46	S 52°02'41" W	81.96'
L47	N 52°55'04" E	70.02'
L48	S 00°00'00" E	91.55'
L49	N 90°00'00" E	45.00'
L50	S 00°00'00" E	32.19'
L51	N 90°00'00" E	61.43'
L52	N 00°00'00" W	61.43'
L53	N 90°00'00" W	61.43'
L54	S 00°00'00" W	9.24'
L55	N 00°00'00" W	50.95'
L56	N 66°29'42" E	29.46'
L57	S 85°07'11" W	25.68'
L58	S 85°06'56" W	25.60'
L59	S 67°42'42" W	22.99'
L60	S 67°37'13" W	25.26'
L61	S 67°59'50" W	26.33'
L62	S 68°00'23" W	24.91'
L63	S 70°03'00" E	15.93'
L64	S 70°57'28" E	15.25'
L65	N 89°48'36" E	66.77'
L66	N 67°48'36" E	29.76'
L67	N 67°48'36" E	32.93'
L68	N 89°48'36" E	73.46'
L69	N 63°40'19" W	24.43'
L70	N 02°27'01" W	99.93'
L71	S 02°27'01" E	101.97'
L72	S 54°24'49" W	34.15'
L73	S 22°31'25" E	40.24'
L74	N 70°40'45" W	21.44'
L75	S 39°29'26" W	20.82'
L76	N 00°00'00" E	33.00'
L77	N 00°00'00" E	35.16'
L78	N 00°00'00" E	37.35'
L79	S 82°15'24" W	32.29'



- LEGEND**
- B.L. INDICATES BUILDING LINE
  - U.E. INDICATES UTILITY EASEMENT
  - E.E. INDICATES ELECTRICAL EASEMENT
  - D.E. INDICATES DRAINAGE EASEMENT
  - W.L.E. INDICATES WATER LINE EASEMENT
  - S.S.E. INDICATES SANITARY SEWER EASEMENT
  - STM.S.E. INDICATES STORM SEWER EASEMENT
  - F.B.C.P.R. INDICATES FORT BEND COUNTY PLAT RECORDS
  - F.B.C.O.R. INDICATES FORT BEND COUNTY OFFICIAL RECORDS
  - F.B.C.O.P.R. INDICATES FORT BEND COUNTY OFFICIAL PUBLIC RECORDS
  - F.B.C.D.R. INDICATES FORT BEND COUNTY DEED RECORDS
  - F.N. INDICATES FILE NUMBER
  - RES. INDICATES RESERVE
  - R.O.W. INDICATES RIGHT-OF-WAY
  - F.M.E. INDICATES FORCE MAIN EASEMENT
  - U.V.E. INDICATES UTILITY VISIBILITY EASEMENT



RESERVE TABLE				
RESERVE	ACREAGE	SQ.FT.	TYPE	MAINTENANCE/OWNERSHIP
A	5.448	237,318	RESTRICTED TO LANDSCAPE/DRAINAGE	SIENNA PLANTATION COMMUNITY ASSOCIATION INC. (S.P.C.A.I.)/SIENNA MUNICIPAL UTILITY DISTRICT NO. 5
B	0.144	6,268	RESTRICTED TO LIFT STATION	SIENNA MUNICIPAL UTILITY DISTRICT NO. 5
C	1.543	67,218	RESTRICTED TO LANDSCAPE	SIENNA PLANTATION COMMUNITY ASSOCIATION INC. (S.P.C.A.I.)/SIENNA MUNICIPAL UTILITY DISTRICT NO. 5
D	0.803	34,970	RESTRICTED TO DRAINAGE	SIENNA PARKS & LEVEE IMPROVEMENT DISTRICT (S.P.L.I.D.)
E	0.050	2,183	RESTRICTED TO DRAINAGE	SIENNA PLANTATION COMMUNITY ASSOCIATION INC. (S.P.C.A.I.)/SIENNA MUNICIPAL UTILITY DISTRICT NO. 4
F	0.072	3,141	RESTRICTED TO DRAINAGE	SIENNA PLANTATION COMMUNITY ASSOCIATION INC. (S.P.C.A.I.)/SIENNA MUNICIPAL UTILITY DISTRICT NO. 4
G	0.072	3,153	RESTRICTED TO DRAINAGE	SIENNA PLANTATION COMMUNITY ASSOCIATION INC. (S.P.C.A.I.)/SIENNA MUNICIPAL UTILITY DISTRICT NO. 4
TOTAL	8.132	354,252		

## SIENNA SECTION 19

A SUBDIVISION OF 26.028 ACRES OF LAND SITUATED IN THE DAVID FITZGERALD LEAGUE, ABSTRACT 25 AND IN THE WILLIAM HALL SURVEY, ABSTRACT 31, FORT BEND COUNTY, TEXAS.  
54 LOTS 7 RESERVES (8.132 ACRES) 1 BLOCK  
NOVEMBER 10, 2021 JOB NO. 1414-1519P  
**TOLL-GTIS PROPERTY OWNER, LLC**  
JIMMIE F. JENKINS, AUTHORIZED REPRESENTATIVE  
10110 WEST SAM HOUSTON PARKWAY NORTH, SUITE 210, HOUSTON, TEXAS 77064  
PH. (281) 894-8655

**SIENNA MUNICIPAL UTILITY DISTRICT NO.5**  
MARK A. KILKENNY, PRESIDENT  
3200 SOUTHWEST FREEWAY, SUITE 2600, HOUSTON, TEXAS 77027  
PH. (713) 860-6400

**SURVEYOR:**  
**GBI PARTNERS**  
LAND SURVEYING CONSULTANTS  
4724 VISTA ROAD - PASADENA, TX 77505  
PHONE: 281-498-4539 • GBSurvey@GBISurvey.com  
TRAPLES FIRM # 10130300 • www.GBISurvey.com  
JON BORDOVSKY, R.P.L.S.  
REGISTERED PROFESSIONAL LAND SURVEYOR  
TEXAS REGISTRATION NO. 6405

**ENGINEER:**  
**LJA Engineering, Inc.**  
1904 W. Grand Parkway North  
Suite 100  
Katy, Texas 77449  
SCOTT FRANKOVICH, P.E.  
LICENSED PROFESSIONAL ENGINEER  
TEXAS REGISTRATION NO. 130312