

THE STATE OF TEXAS §
 §
COUNTY OF FORT BEND §

PETITION AND CONSENT BY LANDOWNER TO THE
INCLUSION OF ROAD RIGHT OF WAY TO
FORT BEND COUNTY ASSISTANCE DISTRICT NO. 1

Fort Bend County, (referred to herein as the “Petitioner”), is the owner, either in fee, dedication, prescriptive right of way, by permanent easement or express permission for entry and maintaining, of certain segments of FM 1093 and adjoining roadways, situated in Fort Bend County, Texas, described in the attached Exhibit A, (the “Annexation Area”), and incorporated herein for all purposes.

Fort Bend County Assistance District No. 1 (“CAD No. 1” or the “District”) was created and authorized to impose a sales and use tax, which may be used for the following purposes within the boundaries of the District: (1) the construction, maintenance, or improvement of roads or highways; (2) the provision of law enforcement and detention services; (3) the maintenance or improvement of libraries, museums, parks, or other recreational facilities; (4) the provision of services that benefit the public health or welfare, including the provision of firefighting and fire prevention services; or (5) the promotion of economic development and tourism.

The Annexation Area, being primarily right of way for roadway and drainage is in need of certain maintenance and capable of being served by CAD No. 1. Petitioner hereby petitions the Board of Directors of CAD No. 1 to take all legal steps necessary to include the Annexation Area into the boundaries of the CAD No. 1.

Petitioner covenants and agrees that there are no registered voters in the area to be included in the CAD No. 1. Therefore, CAD No. 1 is not required to hold an election for inclusion of the Annexation Area or imposition of the District’s current sales and use tax within the area being included.

Petitioner agrees that this Petition for inclusion of real estate shall be filed with CAD No. 1 and considered by the District’s Board of Directors at a public meeting. Petitioner also acknowledges that CAD No. 1’s Board of Directors may enter an Order of Inclusion, and consent in advance of this Petition to include the Annexation Area within the boundaries of CAD No. 1.

RESPECTFULLY SUBMITTED this _____ day of _____, 2021.

FORT BEND COUNTY, TEXAS

By: _____
KP George, County Judge

Date: _____

ATTEST:

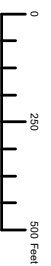
By: _____
Laura Richard, County Clerk

EXHIBIT A

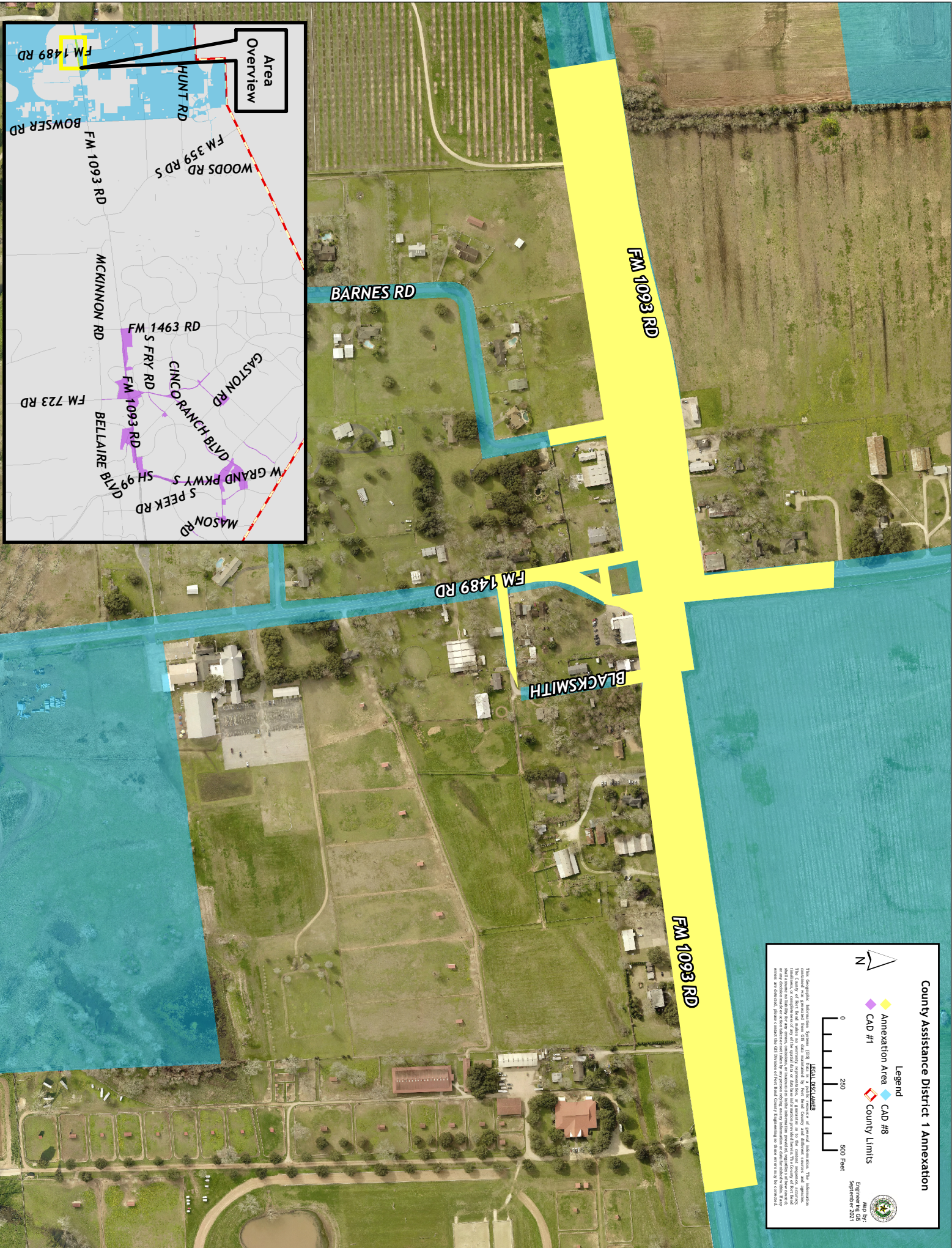
County Assistance District 1 Annexation

Legend

- Annexation Area
- CAD #8
- CAD #1
- County Limits



LEGAL DISCLAIMERS
 The Geographic Information System (GIS) data maintained by Tarrant County and its various divisions and departments is provided "as is" without warranty of any kind, either expressed or implied, including but not limited to the accuracy, completeness, or timeliness of the data. The County of Tarrant and its various divisions and departments are not responsible for any errors or omissions in the data, nor for any consequences arising from the use of the data. The County of Tarrant and its various divisions and departments are not responsible for any errors or omissions in the data, nor for any consequences arising from the use of the data. The County of Tarrant and its various divisions and departments are not responsible for any errors or omissions in the data, nor for any consequences arising from the use of the data.



THE STATE OF TEXAS §
 §
COUNTY OF FORT BEND §

ORDER OF INCLUSION OF ROAD RIGHT OF WAY TO
FORT BEND COUNTY ASSISTANCE DISTRICT NO. 1

RECITALS

WHEREAS, on September 28, 2021, Fort Bend County Assistance District No. 1 (“CAD No. 1” or “District”) received and considered the Petition and Consent by Landowners to the Inclusion of Road Right of Way to CAD No. 1, signed and brought forward by Fort Bend County, (referred to as the “Petitioner”); and

WHEREAS, CAD No. 1 finds that the Petitioner is the owner of all or a majority of land in the area to be included in CAD No. 1, being certain segments of FM 1093 and adjoining roadways situated in Fort Bend County, Texas, described in the attached Exhibit A, (the “Annexation Area”), and incorporated herein for all purposes; and

WHEREAS, CAD No. 1 also finds that there are no registered voters in the area to be included in CAD No. 1 and therefore, no election is required; and

WHEREAS, Section 387.003(f) of the Texas Local Government Code permits CAD No. 1 by order, to include an area in the District on receipt of a petition or petitions signed by the owner or owners of a majority of the land in the area to be included in the District; and

NOW THEREFORE, BE IT ORDERED BY THE BOARD OF DIRECTORS OF CAD NO. 1 THAT:

Section 1: The Annexation Area is hereby included within the boundaries of the District by annexation, eligible for the functions permitted to be performed by CAD No. 1, including but not limited to the construction, maintenance, or improvement of roads or highways.

Section 2: This Order is effective immediately upon passage.

ADOPTED this ____ day of _____, 2021.

**FORT BEND COUNTY ASSISTANCE
DISTRICT NO. 1**

By: _____
KP George, County Judge

Date: _____

ATTEST:

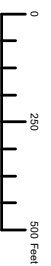
By: _____
Laura Richard, County Clerk

EXHIBIT A

County Assistance District 1 Annexation

Legend

- Annexation Area
- CAD #8
- CAD #1
- County Limits



LEGAL DISCLAIMERS
 The Geographic Information System (GIS) data maintained by Tarrant County and its various divisions and departments is provided "as is" without warranty of any kind, either expressed or implied, including but not limited to the accuracy, completeness, or timeliness of the data. The County of Tarrant and its various divisions and departments are not responsible for any errors or omissions in the data, nor for any consequences arising from the use of the data. The County of Tarrant and its various divisions and departments are not responsible for any errors or omissions in the data, nor for any consequences arising from the use of the data. The County of Tarrant and its various divisions and departments are not responsible for any errors or omissions in the data, nor for any consequences arising from the use of the data.

