



2322 W Grand Parkway North, Suite 150
Katy, Texas 77449
Tel: 832.913.4000
Fax: 832.913.4001
www.jonescarter.com

August 23, 2021

Ms. Maggie Dalton
Development Coordinator
Fort Bend County Engineering
301 Jackson Street, Suite 401
Richmond, TX 77469

Re: Request of Street Closure
Harlem Road

Dear Ms. Dalton:

On behalf of our client, D.R. Horton Texas, Ltd., and Fort Bend County MUD No. 190, we hereby request the street closure of Harlem Road for construction of the Bellaire Blvd. Water, Sanitary, Drainage and Paving Facilities. Construction will require the closure of Harlem Road, just south of FM 1093. Construction will include closure for the removal of existing asphalt road and subgrade, to be replaced with 22-foot wide, 3-inch thick Hot Mix Laid Asphaltic Concrete (HMAC) Type D, and 8" reinforced concrete pavement as per the approved construction plans dated 12/21/2020. Message boards will be in place a minimum of 2 weeks in advance anticipated road closure.

The Bellaire Blvd. Street Dedication Section 2 construction plans, encompassing Harlem Road and including the traffic control plan, were approved by Fort Bend County Engineering on December 21, 2020. Anticipated Harlem Road closure beginning September 7, 2021 until the end of the project. Normal traffic flow is anticipated to commence once the project is deemed substantially complete.

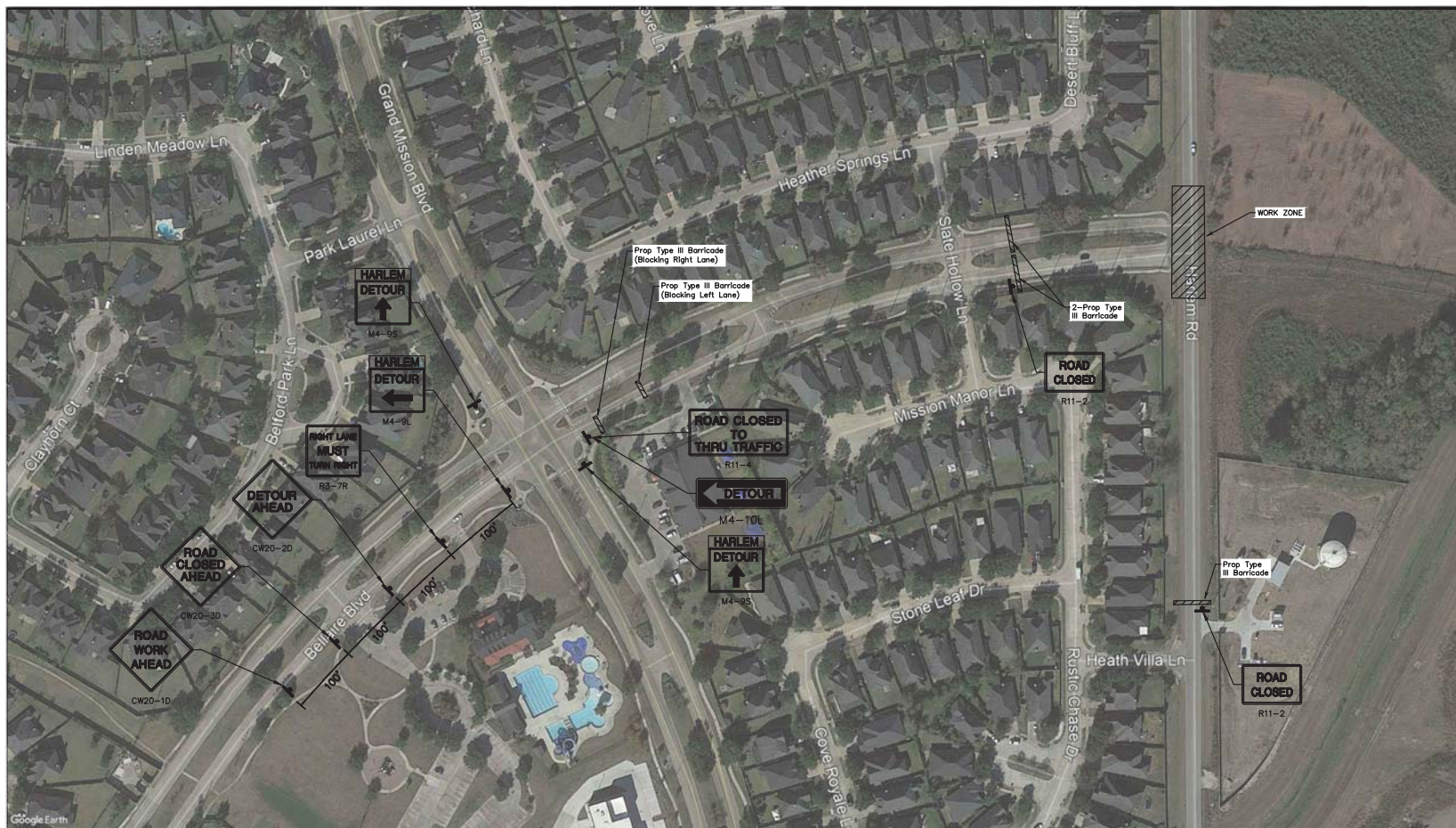
If you have any questions, please do not hesitate to contact me.

Sincerely,

Bryan F. Aguirre, PE
Project Engineer

BFA

K:\14910\14910-0041-00 Bellaire Blvd. St. Ded. Sec. 2 WS&D\3 Construction Phase\Traffic Control Plan



GENERAL NOTES

- Flags attached to signs where shown are OPTIONAL.
- All traffic control devices illustrated are REQUIRED, except those denoted with the triangle symbol are OPTIONAL.
- Inactive work vehicles or other equipment should be parked near the right-of-way line and not parked on the paved shoulder.
- A Shadow Vehicle with a TMA should be used anytime it can be positioned 30 to 100 feet in advance of the area of crew exposure without adversely affecting the performance or quality of the work. If workers are no longer present but road or work conditions require the traffic control to remain in place, Type 3 Barricades or other channelizing devices may be substituted for the Shadow Vehicle and TMA.
- Additional Shadow Vehicles with TMAs may be positioned off the paved surface, next to those shown in order to protect wider work spaces.
- Contractor shall provide and install traffic control devices in conformance with part VI of Texas Manual on Uniform Traffic Control Devices (TMUTCD - Latest edition with revisions) during construction.
- No lanes shall be blocked from 7am to 9am and 4pm to 6:30pm Monday thru Friday.
- Off duty police officers/flaggers are required to direct traffic when applicable.
- If project is within 400 feet from a signalized intersection, the Contractor shall contact Harris County Engineering Department, Traffic Signal Maintenance at (713) 881-3210 five (5) days prior to the start of construction.

Posted Speed	Formula	Minimum Desirable Taper Lengths "L"			Suggested Maximum Spacing of Channelizing Devices		Minimum Sign Spacing "X" Distance	Suggested Longitudinal Buffer Space "B"
		10' Offset	11' Offset	12' Offset	On a Taper	On a Tangent		
30	$L = \frac{WS}{S}$	150'	165'	180'	30'	60'	120'	90'
35		205'	225'	245'	35'	70'	160'	120'
40		265'	295'	320'	40'	80'	240'	155'
45	$L = WS$	450'	495'	540'	45'	90'	320'	195'
50		500'	550'	600'	50'	100'	400'	240'
55		550'	605'	660'	55'	110'	500'	295'
60	$L = WS$	600'	660'	720'	60'	120'	600'	350'
65		650'	715'	780'	65'	130'	700'	410'
70		700'	770'	840'	70'	140'	800'	475'
75		750'	825'	900'	75'	150'	900'	540'

* Conventional Roads Only

** Taper lengths have been rounded off.

L=Length of Taper(FT) W=Width of Offset(FT) S=Posted Speed(MPH)

LEGEND	
	Type 3 Barricade
	Heavy Work Vehicle
	Trailer Mounted Flashing Arrow Board
	Sign
	Flag
	Channelizing Devices
	Truck Mounted Attenuator (TMA)
	Portable Changeable Message Sign (PCMS)
	Traffic Flow
	Flagger

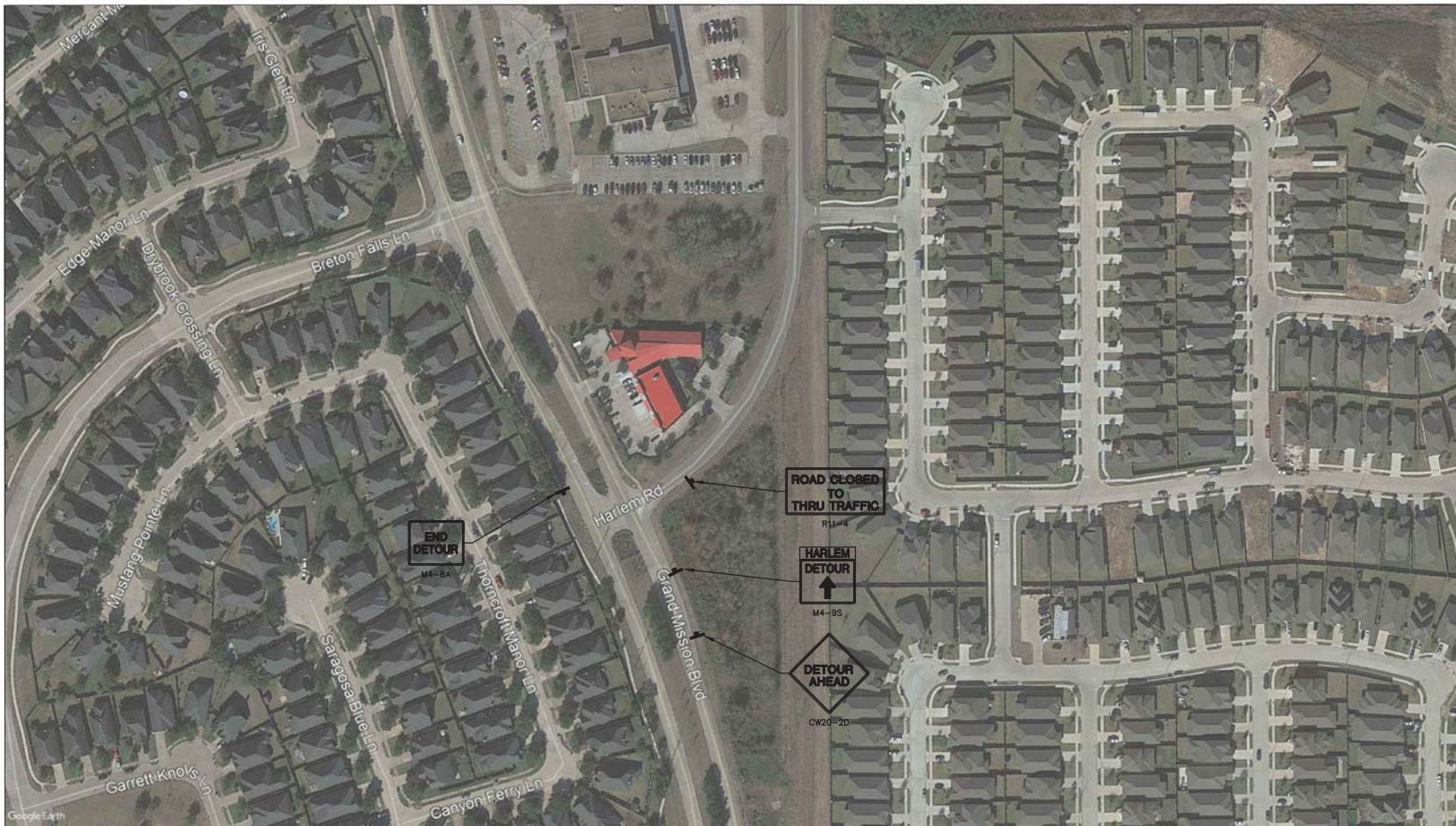
TRAFFIC CONTROL PLAN II

NOTE: CITY SIGNATURES VALID FOR ONE YEAR ONLY AFTER DATE OF SIGNATURES

CITY OF HOUSTON
HOUSTON PUBLIC WORKS

FILE NO. 09-24-2020
PROJECT NO. 1910-0041
CON BY: RCM
DATE: 09/24/2020
SCALE: N.T.S.
SHEET NO. 29 OF 31
DATE: SEPTEMBER 2020





NO.	DATE	REVISIONS
1		
2		
3		
4		
5		
6		
7		
8		
9		
10		

EBC ENGINEERING APPROVAL
Chen
 11-10-2020

JC
 Jones & Carter, Inc.
 Texas Board of Professional Engineers
 Registration No. 74330
 6300 West Loop South, Suite 250
 The Woodlands, Texas 77380
 281.777.3307

STATE OF TEXAS
 BRYAN F. AQUIRRE
 152270
 LICENSED PROFESSIONAL ENGINEER
Bryan F. Aquirre

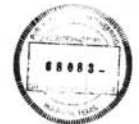
TRAFFIC CONTROL PLAN III

NOTE: CITY SIGNATURES VALID FOR ONE YEAR ONLY AFTER
 DATE OF SIGNATURES

CITY OF HOUSTON
 HOUSTON PUBLIC WORKS

03-24-2020
 03-24-2020
 STORM WATER QUALITY
 FACILITIES
 TWENTY & TRANSPORTATION/
 STREET & BRIDGE
 SCALE: N.T.S.

FILE NO.:
 PROJECT NO.: 14810-0041
 DRAWN BY: MAX
 CHECKED BY: BEN
 SHEET NO. **30** OF 31
 DATE: SEPTEMBER 2020
 FOR CITY OF HOUSTON USE ONLY



GENERAL NOTES

- Flags attached to signs where shown are OPTIONAL.
- All traffic control devices illustrated are REQUIRED, except those denoted with the triangle symbol are OPTIONAL.
- Inactive work vehicles or other equipment should be parked near the right-of-way line and not parked on the paved shoulder.
- A Shadow Vehicle with a TMA should be used anytime it can be positioned 30 to 100 feet in advance of the area of crew exposure without adversely affecting the performance or quality of the work. If workers are no longer present but road or work conditions require the traffic control to remain in place, Type 3 Barricade or other channelizing devices may be substituted for the Shadow Vehicle and TMA.
- Additional Shadow Vehicles with TMAs may be positioned off the paved surface, next to those shown in order to protect wider work spaces.
- Contractor shall provide and install traffic control devices in conformance with part VI of Texas Manual on Uniform Traffic Control Devices (TMUTCD) - Latest edition with revisions during construction.
- No lanes shall be blocked from 7am to 8am and 4pm to 6:30pm Monday thru Friday.
- Off duty police officers/roppers are required to direct traffic when applicable.
- If project is within 400 feet from a signalized intersection, the Contractor shall contact Harris County Engineering Department, Traffic Signal Maintenance at (713) 881-3210 five (5) days prior to the start of construction.

Posted Speed "S"	Formula L=WS/2	Minimum Desirable Taper Lengths "L"			Suggested Maximum Spacing of Channelizing Devices		Minimum Sign Spacing "X" Distance	Suggested Longitudinal Buffer Space "B"
		10' Offset	11' Offset	12' Offset	On a Taper	On a Tangent		
30	L=WS/2	150'	165'	180'	30'	60'	120'	90'
35		205'	225'	245'	35'	70'	160'	120'
40		265'	295'	320'	40'	80'	240'	155'
45		450'	495'	540'	45'	90'	320'	195'
50		500'	550'	600'	50'	100'	400'	240'
55	L=WS	550'	605'	660'	55'	110'	500'	295'
60		600'	660'	720'	60'	120'	600'	350'
65		650'	715'	780'	65'	130'	700'	410'
70		700'	770'	840'	70'	140'	800'	475'
75		750'	825'	900'	75'	150'	900'	540'

* Conventional Roads Only
 ** Taper lengths have been rounded off.
 L=Length of Taper(FT) W=Width of Offset(FT) S=Posted Speed(MPH)

LEGEND	
	Type 3 Barricade
	Heavy Work Vehicle
	Trailer Mounted Flashing Arrow Board
	Sign
	Flag
	Channelizing Devices
	Truck Mounted Attenuator (TMA)
	Portable Changeable Message Sign (PCMS)
	Traffic Flow
	Flagger