



2322 W Grand Parkway North, Suite 150  
Katy, Texas 77449  
Tel: 832.913.4000  
Fax: 832.913.4001  
[www.jonescarter.com](http://www.jonescarter.com)

May 19, 2021

Ms. Maggie Dalton  
Development Coordinator  
Fort Bend County Engineering  
301 Jackson Street, Suite 401  
Richmond, TX 77469

Re: Request of Street Closure  
**Hunt Road Phase II**


Dear Ms. Dalton:

On behalf of our client, Vanbrooke, LLC. and on behalf of Fort Bend County MUD No. 220, we hereby request the street closure of Hunt Road for construction of the Hunt Road Phase II paving and drainage improvements. Construction will require the closure of Hunt Road, just west of the FM 359. Construction will include closure for the removal of existing asphalt road and subgrade, to be replaced with 25-foot wide, 8-inch thick concrete pavement.

Hunt Road Phase II construction plans were approved by Fort Bend County Engineering on November 9, 2020. The Traffic Control Plan was approved by Fort Bend County Engineering on \_\_\_\_\_. Hunt Road closure to begin on June 2, 2021 and last through August 26, 2021, to account for any weather delays. Normal traffic flow will commence on August 27, 2021.

If you have any questions, please do not hesitate to contact me.

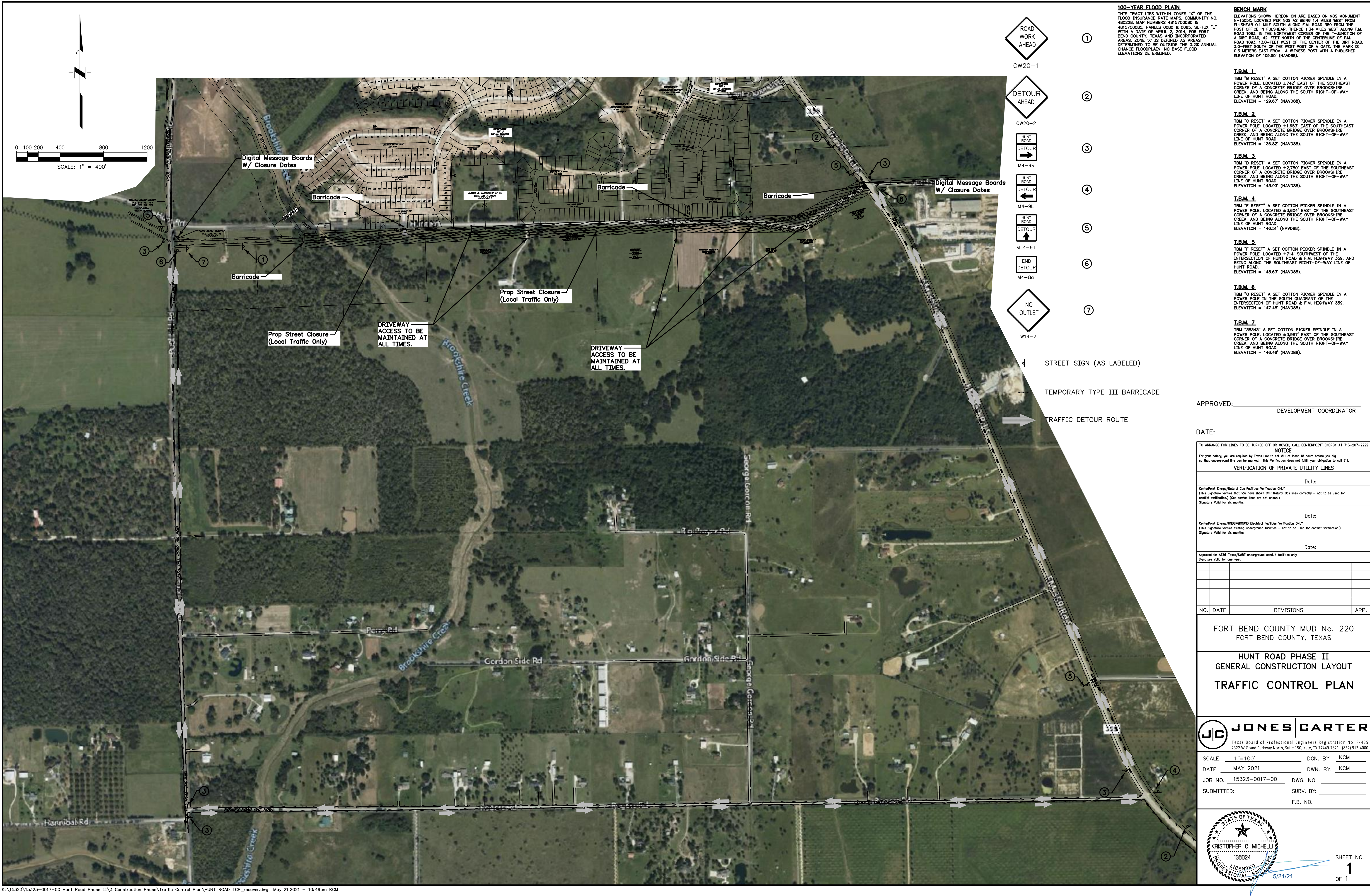
Sincerely,



Kristopher C. Michelli, PE  
Construction Manager

KCM  
K:\15323\15323-0017-00 Hunt Road Phase II\3 Construction Phase\Traffic Control Plan





**100-YEAR FLOOD PLAIN**  
THIS TRACT LIES WITHIN ZONES "X" OF THE FLOOD INSURANCE RATE MAPS, COMMUNITY NO. 480228, MAP NUMBERS 48157C0080 & 48157C0085, PANELS 0080 & 0085, SUFFIX "L" WITH A DATE OF APRIL 2, 2014, FOR FORT BEND COUNTY, TEXAS AND INCORPORATED AREAS. ZONE "X" IS DEFINED AS AREAS DETERMINED TO BE OUTSIDE THE 0.2% ANNUAL CHANCE FLOODPLAIN, NO BASE FLOOD ELEVATIONS DETERMINED.

**BENCH MARK**  
ELEVATIONS SHOWN HEREON ON ARE BASED ON NGS MONUMENT N-1505X, LOCATED PER NGS AS BEING 1.4 MILES WEST FROM FULSHEAR 0.1 MILE SOUTH ALONG F.M. ROAD 359 FROM THE POST OFFICE IN FULSHEAR, THENCE 1.34 MILES WEST ALONG F.M. ROAD 1093, IN THE NORTHWEST CORNER OF THE 1-JUNCTION OF A DIRT ROAD, 42-FOOT NORTH OF THE CENTERLINE OF F.M. ROAD 1093, 13.0-FOOT WEST OF THE CENTER OF THE DIRT ROAD, 3.0-FOOT SOUTH OF THE WEST POST OF A GATE. THE MARK IS 0.3 METERS EAST FROM A WITNESS POST WITH A PUBLISHED ELEVATION OF 109.50' (NAVD88).

**T.B.M. 1**  
TBM "D RESET" A SET COTTON PICKER SPINDLE IN A POWER POLE, LOCATED ±742' EAST OF THE SOUTHEAST CORNER OF A CONCRETE BRIDGE OVER BROOKSHIRE CREEK, AND BEING ALONG THE SOUTH RIGHT-OF-WAY LINE OF HUNT ROAD.  
ELEVATION = 129.67' (NAVD88).

**T.B.M. 2**  
TBM "C RESET" A SET COTTON PICKER SPINDLE IN A POWER POLE, LOCATED ±1,853' EAST OF THE SOUTHEAST CORNER OF A CONCRETE BRIDGE OVER BROOKSHIRE CREEK, AND BEING ALONG THE SOUTH RIGHT-OF-WAY LINE OF HUNT ROAD.  
ELEVATION = 136.82' (NAVD88).

**T.B.M. 3**  
TBM "D RESET" A SET COTTON PICKER SPINDLE IN A POWER POLE, LOCATED ±2,750' EAST OF THE SOUTHEAST CORNER OF A CONCRETE BRIDGE OVER BROOKSHIRE CREEK, AND BEING ALONG THE SOUTH RIGHT-OF-WAY LINE OF HUNT ROAD.  
ELEVATION = 143.93' (NAVD88).

**T.B.M. 4**  
TBM "E RESET" A SET COTTON PICKER SPINDLE IN A POWER POLE, LOCATED ±3,604' EAST OF THE SOUTHEAST CORNER OF A CONCRETE BRIDGE OVER BROOKSHIRE CREEK, AND BEING ALONG THE SOUTH RIGHT-OF-WAY LINE OF HUNT ROAD.  
ELEVATION = 146.51' (NAVD88).

**T.B.M. 5**  
TBM "F RESET" A SET COTTON PICKER SPINDLE IN A POWER POLE, LOCATED ±4,714' EAST OF THE SOUTHEAST CORNER OF A CONCRETE BRIDGE OVER BROOKSHIRE CREEK, AND BEING ALONG THE SOUTH RIGHT-OF-WAY LINE OF HUNT ROAD.  
ELEVATION = 145.63' (NAVD88).

**T.B.M. 6**  
TBM "G RESET" A SET COTTON PICKER SPINDLE IN A POWER POLE, LOCATED ±5,987' EAST OF THE SOUTHEAST CORNER OF A CONCRETE BRIDGE OVER BROOKSHIRE CREEK, AND BEING ALONG THE SOUTH RIGHT-OF-WAY LINE OF HUNT ROAD.  
ELEVATION = 147.48' (NAVD88).

**T.B.M. 7**  
TBM "H RESET" A SET COTTON PICKER SPINDLE IN A POWER POLE, LOCATED ±7,114' EAST OF THE SOUTHEAST CORNER OF A CONCRETE BRIDGE OVER BROOKSHIRE CREEK, AND BEING ALONG THE SOUTH RIGHT-OF-WAY LINE OF HUNT ROAD.  
ELEVATION = 146.46' (NAVD88).

APPROVED: \_\_\_\_\_  
DEVELOPMENT COORDINATOR

DATE: \_\_\_\_\_

TO ARRANGE FOR LINES TO BE TURNED OFF OR MOVED, CALL CENTERPOINT ENERGY AT 713-207-2222  
NOTICE:  
For your safety, you are required by Texas Law to call 811 at least 48 hours before you dig so that underground lines can be marked. This verification does not fulfill your obligation to call 811.

VERIFICATION OF PRIVATE UTILITY LINES			
Date:			
CenterPoint Energy/Natural Gas Facilities Verification ONLY. (This Signature verifies that you have shown CPE Natural Gas lines correctly - not to be used for conflict verification.) (See service lines are not shown.) Signature valid for six months.			
Date:			
CenterPoint Energy/UNDERGROUND Electrical Facilities Verification ONLY. (This Signature verifies existing underground facilities - not to be used for conflict verification.) Signature valid for six months.			
Date:			
Approved for AT&T Texas/SBBT underground conduit facilities only. Signature valid for one year.			

NO.	DATE	REVISIONS	APP.

FORT BEND COUNTY MUD No. 220  
FORT BEND COUNTY, TEXAS

HUNT ROAD PHASE II  
GENERAL CONSTRUCTION LAYOUT  
TRAFFIC CONTROL PLAN

**J/C JONES CARTER**  
Texas Board of Professional Engineers Registration No. F-4339  
2322 W Grand Parkway North, Suite 150, Katy, TX 77449-7821 (832) 913-4000

SCALE: 1"=100' DGN. BY: KCM  
DATE: MAY 2021 DWN. BY: KCM  
JOB NO. 15323-0017-00 DWG. NO. \_\_\_\_\_  
SUBMITTED: SURV. BY: \_\_\_\_\_  
F.B. NO. \_\_\_\_\_

STATE OF TEXAS  
KRISTOPHER C MICHELL  
136024  
LICENSED PROFESSIONAL ENGINEER  
5/21/21  
SHEET NO. 1 OF 1