

Fort Bend County Engineering
FORT BEND COUNTY, TEXAS

J. Stacy Slawinski, P.E.
County Engineer

May 17, 2021

Commissioner Vincent M. Morales Jr.
Fort Bend County Precinct 1
1517 Eugene Heimann Circle, Suite 300
Richmond, Texas 77469

RE: Bonbrook Plantation South, Section Ten

Dear Commissioner:

A final inspection of the roads for the above referenced subdivision was made, the majority of the streets are being accepted, and the original bonds are being released.

There are portions of the roadways that are being bonded again due to needed repairs and a separate bond is being accepted in the amount of \$8,500.00 for those deficiencies located at Hemlock Drive, Downing Street and Japonica Drive.

If you should have any questions or need additional information please feel free to call.

Sincerely,

Brad Clarida
Construction Inspector
Engineer Technician I

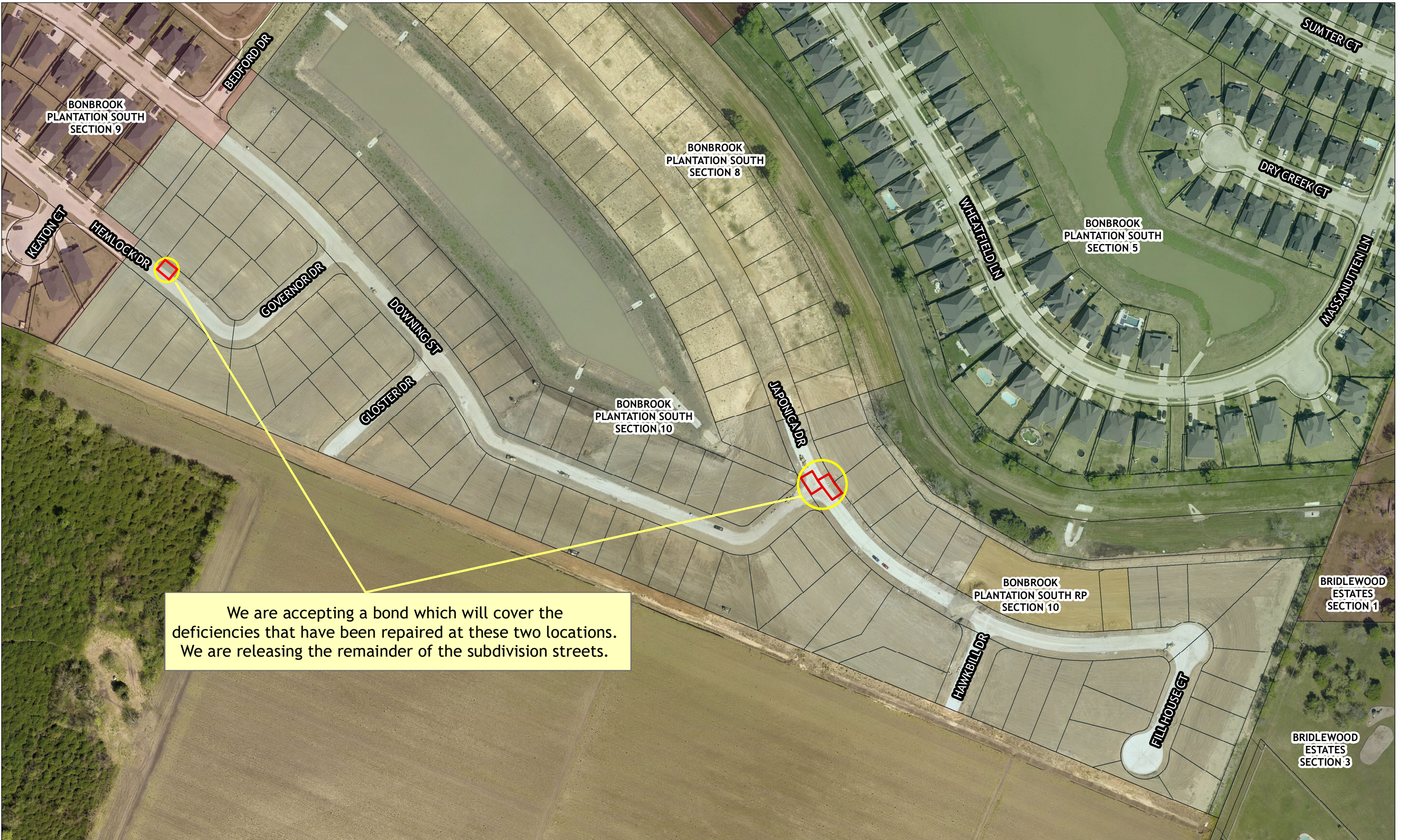
BC/gyl

Attachment

cc: (listed on page 2)

Mr. Andrew Bowman, LJA Engineering
Ms. Kirsten Wilson, LJA Engineering
Mr. John N. Taylor, Bonbrook Plantation L.P.
Mr. Anthony Pena, Angel Brothers
Mr. Nick Huerta, Jones|Carter
Mr. Scott Wieghat, FBC Road & Bridge
File

abowman@lja.com
kwilson@lja.com
jntaylor43@yahoo.com
apena@angelbrothers.com
nhuerta@jonescarter.com



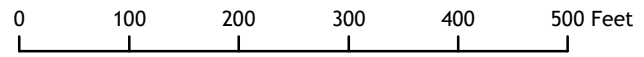
We are accepting a bond which will cover the deficiencies that have been repaired at these two locations. We are releasing the remainder of the subdivision streets.



Map by
Engineering GIS
May 2021

Bonbrook Plantation South Section 10

Legend
 Marked Deficiencies



LEGAL DISCLAIMER
 This Geographic Information Systems (GIS) Data is a public resource of general information. The information contained was generated from GIS data maintained by Fort Bend County and different sources and agencies. The County of Fort Bend makes no warranty, representation, or guarantee as to the content, sequence, accuracy, timeliness, or completeness of any of the spatial data or database information provided herein. The County of Fort Bend shall assume no liability for any errors, omissions, or inaccuracies in the information provided, regardless of how caused; or any decision made or action taken or not taken by any person relying on any information or data furnished within. If any errors are detected, please contact the GIS Division of Fort Bend County Engineering so those errors may be corrected.