



Fort Bend County Engineering
FORT BEND COUNTY, TEXAS

J. Stacy Slawinski, P.E.
County Engineer

March 25, 2021

Commissioner W.A. "Andy" Meyers
Fort Bend County Precinct 3
22333 Grand Corner Drive
Katy, Texas 77494

RE: Jordan Ranch Street Dedication No. 3 and Reserves - Street Name Change

Dear Commissioner:

IDS Engineering Group on behalf of Fort Bend Jordan Ranch LP requests to correct the spelling of the street name from Terragon Trace to Tarragon Trace, as indicated on the attached. The Jordan Ranch Street Dedication No. 3 and Reserves plat was recorded on 11/26/2019, instrument #2019136239. It is a continuation street from Jordan Ranch Section 6 instrument #2019032805 and it was recorded as Tarragon Trace. Therefore, the Developer has requested for it to be changed. No lots are affected by this proposed name change

The request to set a public hearing has been placed on the next available agenda.

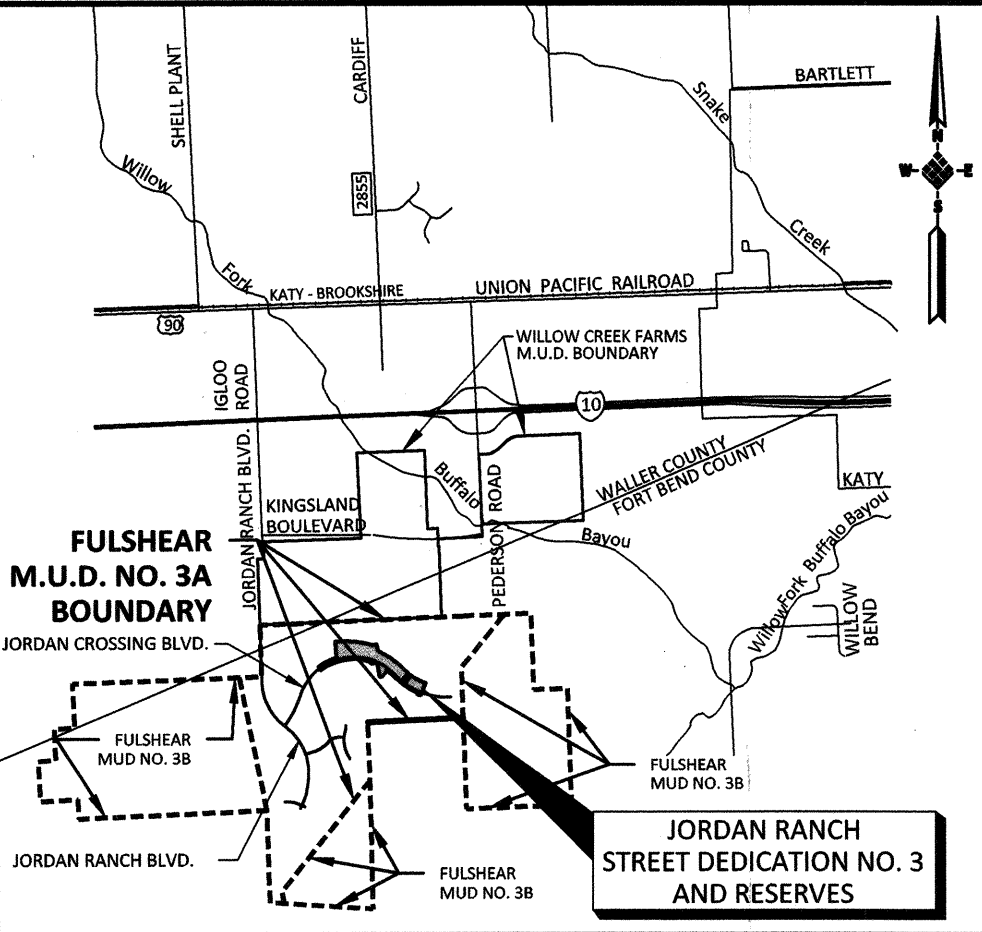
If you have any questions please do not hesitate to call.

Sincerely,

Maggie Dalton
Development Services Manager

MD/cmv

cc: Mr. John Herzog, IDS Engineering jherzog@idseg.com
Mr. Steve Sams, Johnson Development steves@johnsondev.com
Mr. Miguel Hurtado Jr., Hurtado Construction miguelhurtadojr@gmail.com
Ms. Jennifer D. Vazquez, Fort Bend Central Appraisal District
JenniferVasquez@fbcad.org
Mr. Brian Fields, FBC Road & Bridge
Mr. Mike Smallwood, CenterPoint Energy, Addressing and Routing Technician III,
Maps and Records Dept. mike.smallwood@centerpointenergy.com
FBC GIS Administrator & 911 Coordinator
Major Rudy Castaneda – FBC Sheriff's Office Rudy.Castaneda@fortbendcountytexas.gov
Major Manuel Zamora – FBC Sheriff's Office Manuel.Zamora@fortbendcountytexas.gov
File



FORT BEND COUNTY KEY MAP NO. 482M & 483 J
VICINITY MAP
SCALE 1" = 5,000'

CURVE TABLE					
CURVE	DELTA	RADIUS	LENGTH	TANGENT	CHORD BEARING
C1	19°45'13"	1,550.00'	534.39'	269.87'	N63°04'27"E
C2	22°56'49"	2,533.01'	1,014.47'	514.13'	S84°18'59"E
C3	5°45'39"	1,100.00'	110.60'	55.35'	N35°21'28"E
C4	89°10'15"	30.00'	46.69'	29.57'	S65°19'36"W
C5	87°10'15"	30.00'	45.64'	28.55'	N22°50'39"W
C6	20°48'54"	1,850.00'	672.08'	339.79'	N56°01'20"W
C7	6°39'16"	1,450.00'	168.41'	84.30'	N48°56'30"W
C8	3°59'21"	1,450.00'	100.96'	50.50'	N66°26'02"W
C9	88°34'50"	30.00'	46.38'	29.27'	S67°16'52"W
C10	0°29'31"	1,030.00'	8.85'	4.42'	S23°14'13"W
C11	96°46'02"	30.00'	50.67'	33.77'	N24°54'03"W
C12	53°31'06"	1,450.00'	1,354.41'	731.15'	S79°57'23"W
C13	56°02'39"	1,500.00'	1,467.23'	798.30'	S81°13'09"W
C14	25°08'39"	1,500.00'	658.27'	334.52'	N58°11'12"W
C15	6°10'00"	1,800.00'	193.73'	96.96'	N48°41'53"W
C16	16°26'01"	1,800.00'	516.27'	259.92'	S59°59'53"E
C17	1°52'23"	1,800.00'	58.85'	29.43'	S69°09'05"E
C18	4°14'30"	1,000.00'	74.03'	37.03'	S21°21'44"W
C19	3°40'06"	1,750.00'	112.05'	56.04'	S47°26'56"E
C20	92°28'43"	30.00'	48.42'	31.33'	N84°28'39"E
C21	92°31'11"	30.00'	48.44'	31.35'	S08°01'18"E
C22	15°48'23"	1,750.00'	482.78'	242.93'	S62°11'05"E
C23	12°10'13"	1,450.00'	308.00'	154.58'	N58°21'15"W
C24	38°45'36"	1,475.00'	997.82'	518.85'	N86°23'34"W
C25	61°26'04"	1,550.00'	1,661.96'	920.95'	S76°19'54"E

27 pgs 2019136239

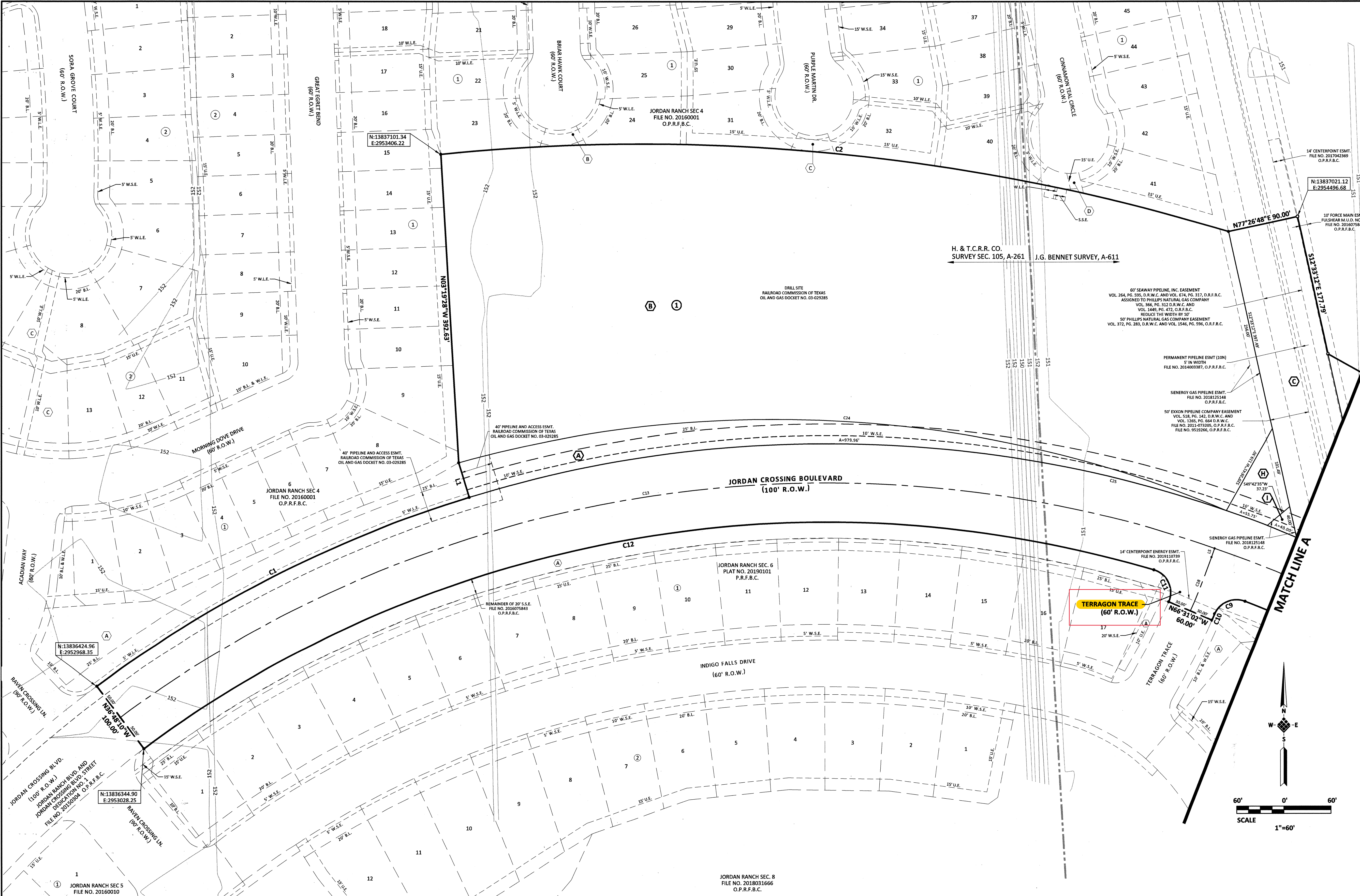
FILED AND RECORDED
OFFICIAL PUBLIC RECORDS

Laura Richard
Laura Richard, County Clerk
Fort Bend County Texas
November 26, 2019 03:16:48 PM
FEE: \$1930.00 EL 20190287

JORDAN RANCH
STREET DEDICATION NO. 3
AND RESERVES

A SUBDIVISION OF
24.901 ACRES
LOCATED IN
H. & T.C.R.R. CO. SURVEY, SECTION 105, A-261
AND J.G. BENNETT SURVEY, A-611
FORT BEND COUNTY, TEXAS
0 LOTS 3 BLOCKS 9 RESERVES
OWNER: FORT BEND JORDAN RANCH LP
a Texas limited partnership
5005 RIVERWAY DRIVE, SUITE 500, HOUSTON, TEXAS 77056 (713) 960-9977

ENGINEER: **IDS** Engineering Group
13430 NW. Freeway
Suite 700
Houston, Tx. 77040
713.462.3178
TBP# F-002726
TBP# 20110700



RESERVE TABLE				
	RESERVE NAME	RESTRICTION	SQ. FT.	ACRES
A	A	LANDSCAPE/OPEN SPACE/ACCESS/UTILITIES	26,201	0.602
B	B	DRILL SITE/LANDSCAPE/OPEN SPACE/UTILITIES	357,722	8.212
C	C	LANDSCAPE/OPEN SPACE/PIPELINE/UTILITIES	38,788	0.890
D	D	DRAINAGE/DETENTION/LANDSCAPE/OPEN SPACE/PIPELINE/UTILITIES	193,372	4.439
E	E	DRAINAGE/DETENTION/LANDSCAPE/OPEN SPACE/UTILITIES	106,070	2.44
F	F	LIFT STATION/UTILITIES	18,491	0.424
G	G	LANDSCAPE/OPEN SPACE/UTILITIES/PIPELINE	24,892	0.571
H	H	LANDSCAPE/OPEN SPACE/PIPELINE/UTILITIES	4,944	0.114
I	I	PIPELINE/UTILITIES	656	0.015

LINE TABLE		
LINE	BEARING	LENGTH
L1	N17°02'56"W	45.72'
L2	N45°36'53"W	161.92'
L3	S38°14'18"W	81.64'
L4	N20°44'28"E	79.05'
L5	S19°14'29"W	11.86'
L6	S77°26'48"W	14.00'