

**PLAT RECORDING SHEET**

**PLAT NAME:** Sienna Section 26

**PLAT NO:** \_\_\_\_\_

**ACREAGE:** 20.132

**LEAGUE:** David Fitzgerald League

**ABSTRACT NUMBER:** 25

**NUMBER OF BLOCKS:** 3

**NUMBER OF LOTS:** 41

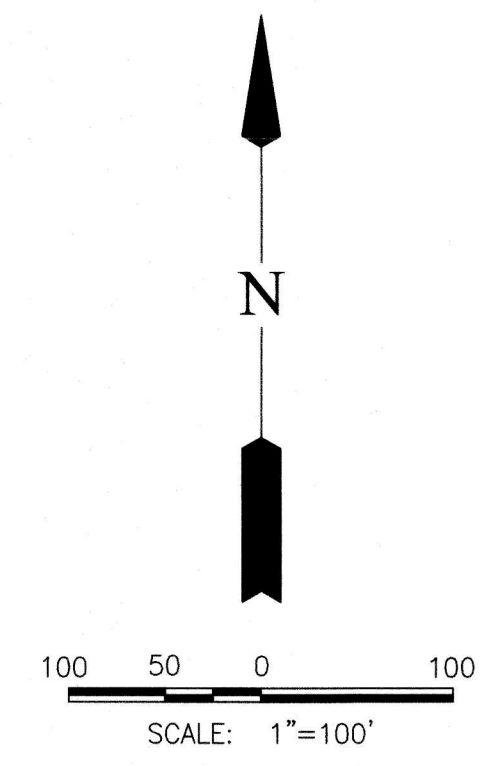
**NUMBER OF RESERVES:** 6

**OWNERS:** Toll-Gtis Property Owner, LLC

\_\_\_\_\_  
**(DEPUTY CLERK)**



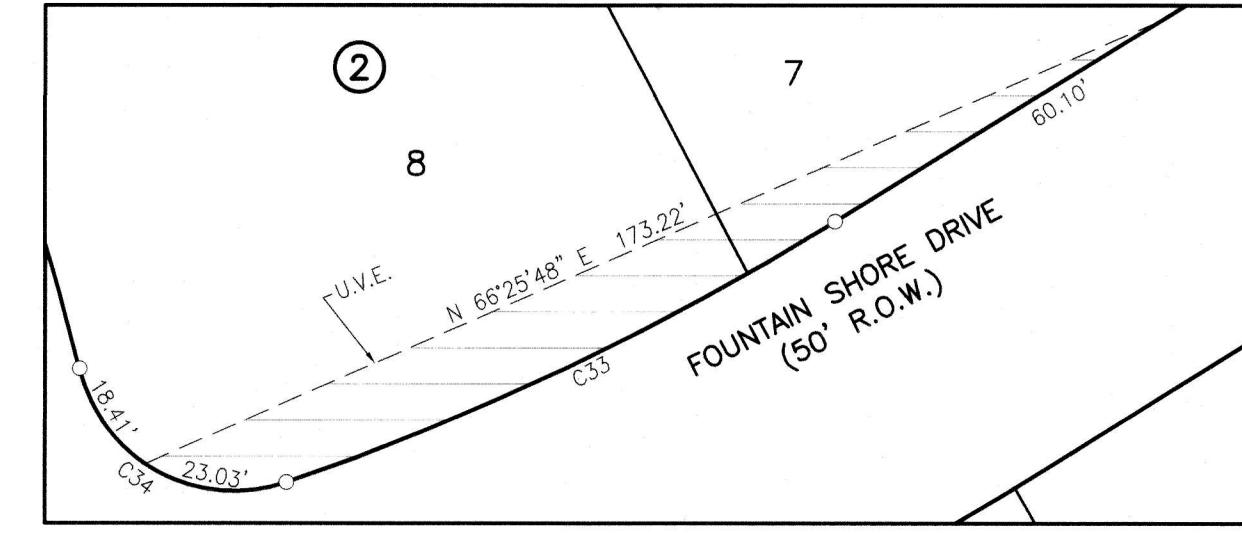
RESERVE TABLE				
RESERVE	ACREAGE	SQ.FT.	TYPE	MAINTENANCE/OWNERSHIP
A	0.101	4,386	RESTRICTED TO LANDSCAPE	SIENNA COMMUNITY ASSOCIATION INC.(S.C.A.I.)/SIENNA MUNICIPAL UTILITY DISTRICT NO.5
B	0.108	4,687	RESTRICTED TO LANDSCAPE/UTILITIES	SIENNA COMMUNITY ASSOCIATION INC.(S.C.A.I.)/SIENNA MUNICIPAL UTILITY DISTRICT NO.5
C	2.025	88,227	RESTRICTED TO LANDSCAPE	SIENNA COMMUNITY ASSOCIATION INC.(S.C.A.I.)/SIENNA MUNICIPAL UTILITY DISTRICT NO.5
D	0.024	1,040	RESTRICTED TO DRAINAGE	SIENNA COMMUNITY ASSOCIATION INC.(S.C.A.I.)/SIENNA MUNICIPAL UTILITY DISTRICT NO.4
E	0.118	5,159	RESTRICTED TO DRAINAGE	SIENNA COMMUNITY ASSOCIATION INC.(S.C.A.I.)/SIENNA MUNICIPAL UTILITY DISTRICT NO.4
F	0.349	15,204	RESTRICTED TO LANDSCAPE	SIENNA COMMUNITY ASSOCIATION INC.(S.C.A.I.)/SIENNA MUNICIPAL UTILITY DISTRICT NO.5
TOTAL	2.725	118,703		



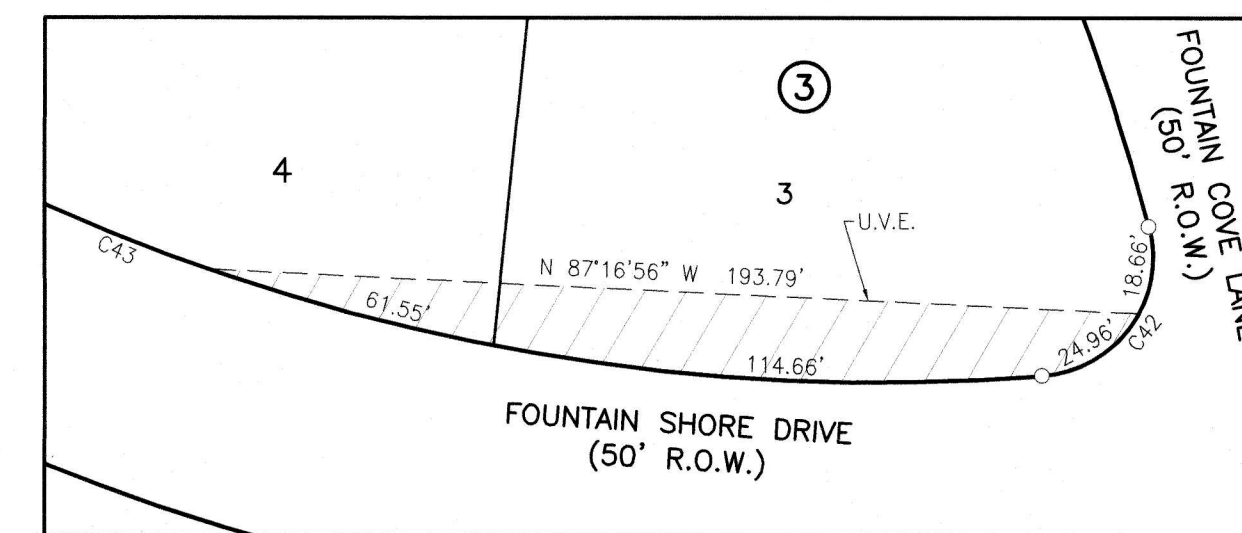
- LEGEND**
- B.L. INDICATES BUILDING LINE
  - U.E. INDICATES UTILITY EASEMENT
  - D.E. INDICATES DRAINAGE EASEMENT
  - W.L.E. INDICATES WATER LINE EASEMENT
  - S.S.E. INDICATES SANITARY SEWER EASEMENT
  - STM.S.E. INDICATES STORM SEWER EASEMENT
  - F.B.C.P.R. INDICATES FORT BEND COUNTY PLAT RECORDS
  - F.B.C.O.R. INDICATES FORT BEND COUNTY OFFICIAL RECORDS
  - F.B.C.D.R. INDICATES FORT BEND COUNTY DEED RECORDS
  - INDICATES STREET NAME CHANGE
  - F.N. INDICATES FILE NUMBER
  - RES. INDICATES RESERVE
  - U.V.E. INDICATES UNOBSTRUCTED VISIBILITY EASEMENT

LINE TABLE				
LINE	BEARING	DISTANCE	CURVE	RADIUS
L1	S 66°43'56" E	195.90'		
L2	S 53°11'04" E	83.80'		
L3	S 33°49'17" E	134.76'		
L4	S 33°25'27" E	104.91'		
L5	N 54°06'08" W	26.94'		
L6	S 23°12'37" E	37.70'		
L7	N 43°04'52" W	51.03'		
L8	N 77°51'47" W	11.00'		
L9	S 11°48'24" E	34.14'		
L10	N 23°12'37" W	32.69'		
L11	N 23°12'37" W	17.30'		
L12	S 62°31'48" W	48.87'		
L13	S 89°31'51" E	69.71'		
L14	S 58°48'04" E	72.70'		
L15	S 36°43'07" E	78.88'		
L16	S 19°02'06" E	90.91'		
L17	N 83°55'26" W	39.41'		
L18	N 83°55'26" W	20.00'		
L19	N 47°17'18" W	33.16'		
L20	N 47°17'18" W	36.94'		

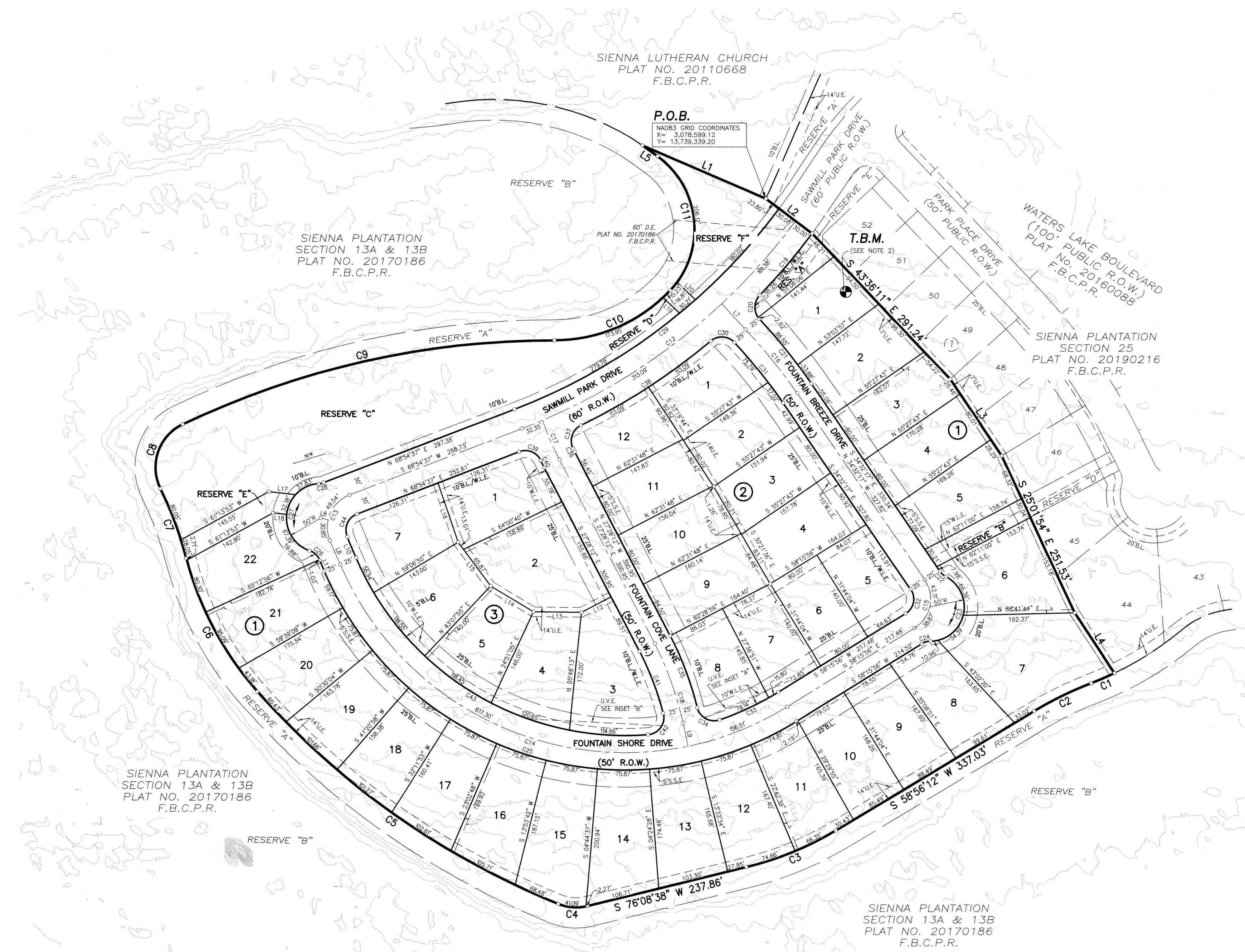
CURVE TABLE					
CURVE	RADIUS	DELTA	ARC	CHORD BEARING	CHORD
C1	469.52'	42°29'49"	36.85'	S 66°40'55" W	36.84'
C2	530.47'	9°59'38"	92.53'	S 63°56'01" W	92.41'
C3	469.52'	17°12'26"	141.01'	S 67°32'25" W	140.48'
C4	69.52'	35°43'59"	43.36'	N 85°59'23" W	42.66'
C5	1169.52'	26°27'49"	540.18'	N 54°53'28" W	535.39'
C6	469.52'	27°00'11"	221.28'	N 28°09'28" W	219.24'
C7	530.48'	11°40'32"	108.10'	N 20°29'39" W	107.91'
C8	69.52'	90°38'34"	109.98'	N 18°59'23" E	98.87'
C9	1246.80'	25°42'45"	559.53'	N 77°10'02" E	554.84'
C10	230.48'	46°55'28"	188.76'	N 66°33'41" E	183.53'
C11	130.48'	97°12'06"	221.36'	N 05°30'06" W	195.75'
C12	900.00'	32°15'55"	506.82'	S 52°46'39" W	500.15'
C13	50.00'	92°07'14"	80.39'	S 22°51'00" W	72.01'
C14	450.00'	98°31'27"	773.81'	S 72°28'20" E	681.93'
C15	50.00'	92°48'14"	80.99'	N 11°51'49" E	72.42'
C16	800.00'	83°32'35"	119.28'	N 38°48'35" W	119.17'
C17	450.00'	75°55'52"	62.29'	S 23°30'16" E	62.24'
C18	450.00'	15°39'48"	123.02'	S 19°38'18" E	122.64'
C19	930.00'	7°16'03"	117.96'	S 40°17'03" W	117.88'
C20	25.00'	86°49'11"	37.88'	S 00°30'29" W	34.36'
C21	825.00'	82°14'49"	120.43'	S 38°43'12" E	120.32'
C22	25.00'	27°29'46"	12.00'	S 48°17'10" E	11.88'
C23	50.00'	150°55'33"	131.71'	S 13°25'43" W	96.80'
C24	25.00'	30°37'33"	13.36'	S 73°34'43" W	13.20'
C25	475.00'	98°31'27"	816.80'	N 72°28'20" W	719.82'
C26	25.00'	47°56'19"	20.92'	N 47°10'46" W	20.31'
C27	50.00'	157°26'29"	137.39'	N 07°34'19" E	98.07'
C28	25.00'	172°25'56"	7.58'	N 77°36'05" E	7.56'
C29	870.00'	32°16'16"	490.02'	N 52°46'29" E	483.57'
C30	25.00'	87°12'06"	38.05'	S 86°28'44" E	34.48'
C31	775.00'	82°20'23"	112.81'	S 38°42'29" E	112.71'
C32	25.00'	92°48'14"	40.49'	S 11°51'49" W	36.21'
C33	425.00'	12°47'56"	94.94'	S 64°39'54" W	94.74'
C34	25.00'	94°57'22"	41.43'	N 61°27'27" W	36.85'
C35	475.00'	13°29'26"	111.84'	N 20°43'29" W	111.58'
C36	425.00'	0°41'09"	5.09'	N 27°07'37" W	5.09'
C37	25.00'	90°38'21"	39.55'	N 18°32'08" E	35.55'
C38	930.00'	13°56'05"	226.18'	N 56°53'16" E	225.62'
C39	25.00'	85°01'12"	37.10'	S 68°34'47" E	33.79'
C40	475.00'	1°24'01"	11.61'	S 26°46'12" E	11.61'
C41	425.00'	12°55'56"	95.93'	S 21°00'14" E	95.72'
C42	25.00'	99°58'39"	43.62'	S 35°27'03" W	38.30'
C43	425.00'	71°21'01"	529.25'	N 58°53'07" W	495.71'
C44	25.00'	92°07'14"	40.20'	N 22°51'00" E	36.00'



INSET "A"  
SCALE: 1"=30'



INSET "B"  
SCALE: 1"=40'



**SIENNA SECTION 26**

A SUBDIVISION OF 20.132 ACRES OF LAND SITUATED IN THE DAVID FITZGERALD LEAGUE, ABSTRACT 25, FORT BEND COUNTY, TEXAS, ALSO BEING A PARTIAL REPLAT OF SIENNA PLANTATION SECTION 13A & 13B REPLAT NO 1, RECORDED IN PLAT NO. 20170186 OF THE FORT BEND COUNTY PLAT RECORDS.

41 LOTS    6 RESERVES (2.725 ACRES)    3 BLOCKS  
DECEMBER 9, 2020    JOB NO. 1414-1526P

**TOLL-GTIS PROPERTY OWNER, LLC**  
JIMMIE F. JENKINS, AUTHORIZED REPRESENTATIVE  
10110 WEST SAM HOUSTON PARKWAY NORTH, SUITE 210, HOUSTON, TEXAS 77064  
PH. (281) 894-8655

**SURVEYOR:**  
**GBI PARTNERS**  
LAND SURVEYING CONSULTANTS  
4784 VISTA ROAD - PASADENA, TX 77805  
PHONE: 281-499-4539 • GBSurvey@GBISurvey.com  
TRFELS FIRM # 10130300 • www.GBISurvey.com

**ENGINEER:**  
**LJA Engineering, Inc.**  
1904 W. Grand Parkway North  
Suite 100  
Katy, Texas 77449  
Phone 713.953.5200  
Fax 713.953.5026  
FRN-F-1386