



Fort Bend County Engineering  
FORT BEND COUNTY, TEXAS

J. Stacy Slawinski, P.E.  
County Engineer

April 1, 2021

Judge KP George  
Fort Bend County Judge  
301 Jackson Street  
Richmond, Texas 77469

**RE: Major Thoroughfare Plan modifications to in the Richmond Extraterritorial Jurisdiction**

Dear Judge George:

Fort Bend County Engineering respectfully requests modifications to the Fort Bend County Major Thoroughfare Plan (MTP). Coordination between Fort Bend County and the City of Richmond have occurred and all parties agree to the requested modifications. The requested modifications are as follows:

- **Golfview Drive extension to FM 359** – remove the proposed Major Thoroughfare between Richmond Parkway and FM 359
- **Edgewood/Baudet Drives** – reclassify to a Collector between US 90A East and the extension of Pitts Road
- **Pitts Road** – upgrade extension south of US 90A East to a Major Thoroughfare

A copy of the map is attached for your review. The public hearing date for acceptance of the change is being scheduled. If you should have any questions, please give me a call 281-633-7515.

Sincerely,

A handwritten signature in cursive script, appearing to read "Maggie Dalton".

Maggie Dalton  
Development Services Manager

MD/mjs

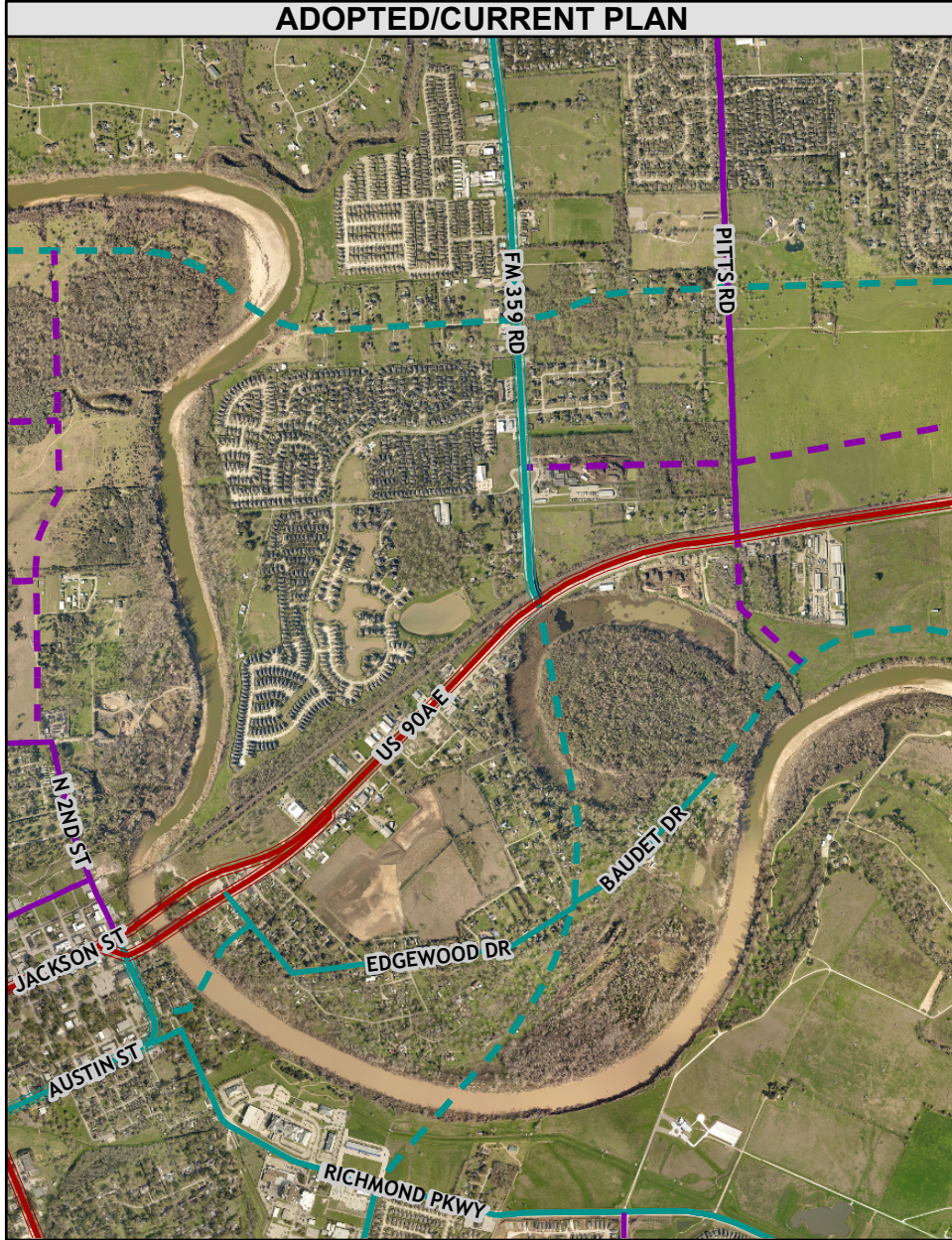
cc: Commissioner Vincent M. Morales, Jr., Pct. 1  
Commissioner Grady Prestage, Pct. 2  
Commissioner W. A. Andy Meyers, Pct. 3  
Commissioner Ken DeMerchant, Pct. 4  
Mr. J. Stacy Slawinski, P.E., County Engineer  
File

301 Jackson St., Suite 401 | Richmond, TX 77469  
Phone 281-633-7500

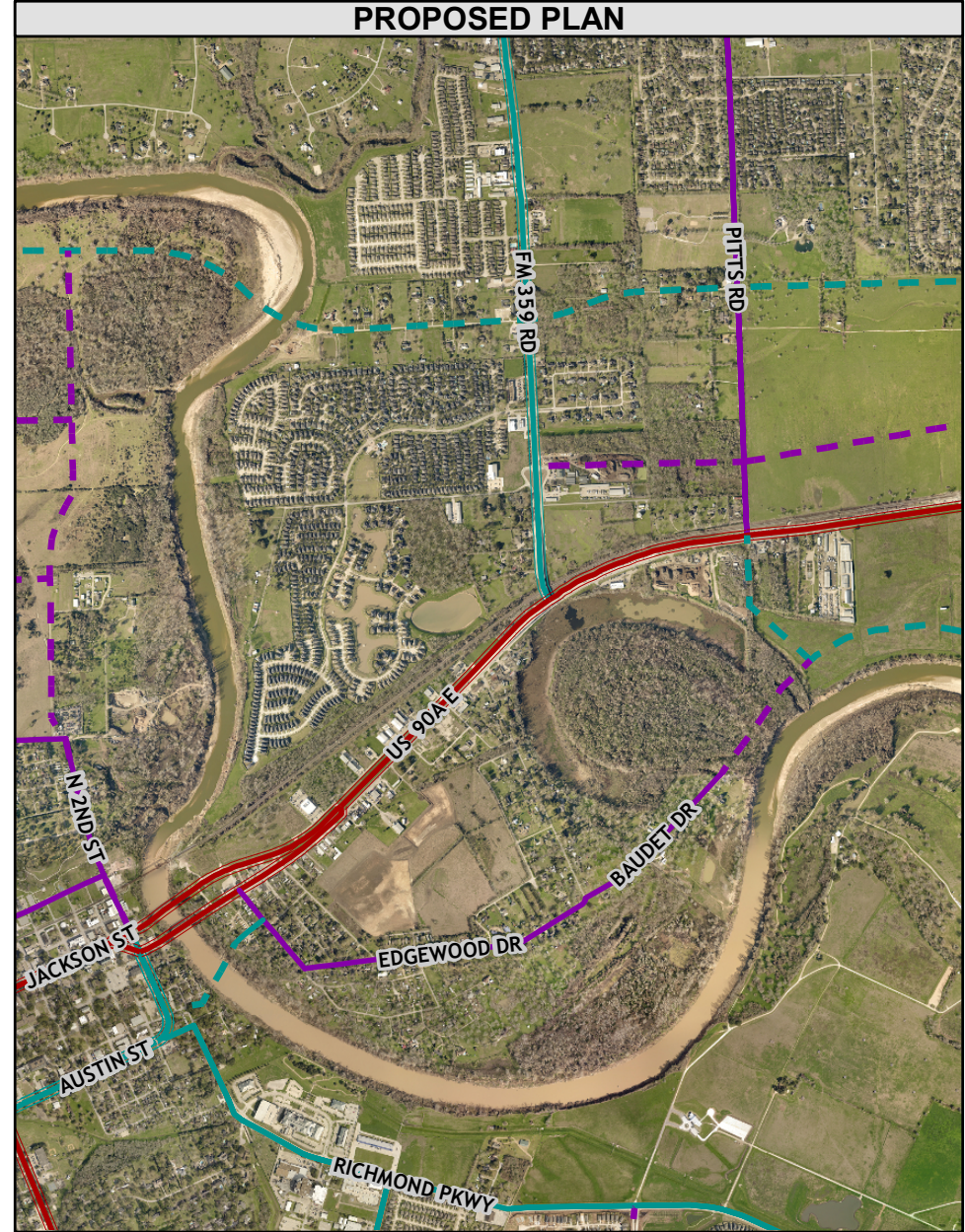


# Golfview Extension to FM 359 and Edgewood / Baudet Drives

ADOPTED/CURRENT PLAN



PROPOSED PLAN



2015 MTP  
Proposed Revision

Map By:  
Engineering GIS  
April 2021

Legend

- City/County Collector
- City/County Major Thoroughfare
- State Major Thoroughfare
- City/County Principal Thoroughfare
- State Principal Thoroughfare

- Collector
- Major Thoroughfare
- Principal Thoroughfare

0 1,000 2,000 3,000 Feet



Disclaimer

This Geographic Information Systems (GIS) Data is a public resource of general information. The information contained was generated from GIS data maintained by Fort Bend County and different sources and agencies. The County of Fort Bend makes no warranty, representation, or guarantee as to the content, sequence, accuracy, timeliness, or completeness of any of the spatial data or database information provided herein. The County of Fort Bend shall assume no liability for any errors, omissions, or inaccuracies in the information provided, regardless of how caused; or any decision made or action taken or not taken by any person relying on any information or data furnished within. If any errors are detected, please contact the GIS Division of Fort Bend County Engineering so they may be corrected.