



1904 W Grand Parkway N, Suite 100, Katy, Texas 77449  
t 713.953.5200 f 713.953.5026 LJA.com TBPE F-1386

---

February 24, 2021

The Honorable Andy Meyers  
Fort Bend County Commissioner  
Precinct Three  
22333 Grand Corner Drive  
Katy, Texas 77494

Re: Request for Temporary Street Closure of Tamarron Crossing between  
FM 1463 and Tamarron Trace  
On Behalf of DR Horton and Fort Bend County Municipal Utility District No. 182  
LJA Job No. 1931-1400

Dear Commissioner Meyers:

On behalf of DR Horton and Fort Bend County Municipal Utility District No. 182, we would like to request a temporary road closure of Tamarron Crossing between FM 1463 and Tamarron Trace from March 15, 2021 to March 19, 2021 in accordance with the attached Closure Plan Exhibit.

We are requesting the road closure to allow for D&J Construction, Inc. to make pavement repairs in accordance with the 1-Year warranty punch list provided by Fort Bend County Engineering for Tamarron Crossing Section 3 Street Dedication and Tamarron Crossing Section 4 Street Dedication. Due to the locations of the pavement areas requiring removal and replacement on the two-lane street, it has been determined that a full road closure and detour is the safest and most efficient way to make the repairs. Message boards will be utilized to notify the public of the street shut closure and a high early strength concrete mixture will be used in an effort to re-open the street as quickly as possible.

Should you have any questions or need any additional information concerning this road closure plan, please call me at 713.380.4430.

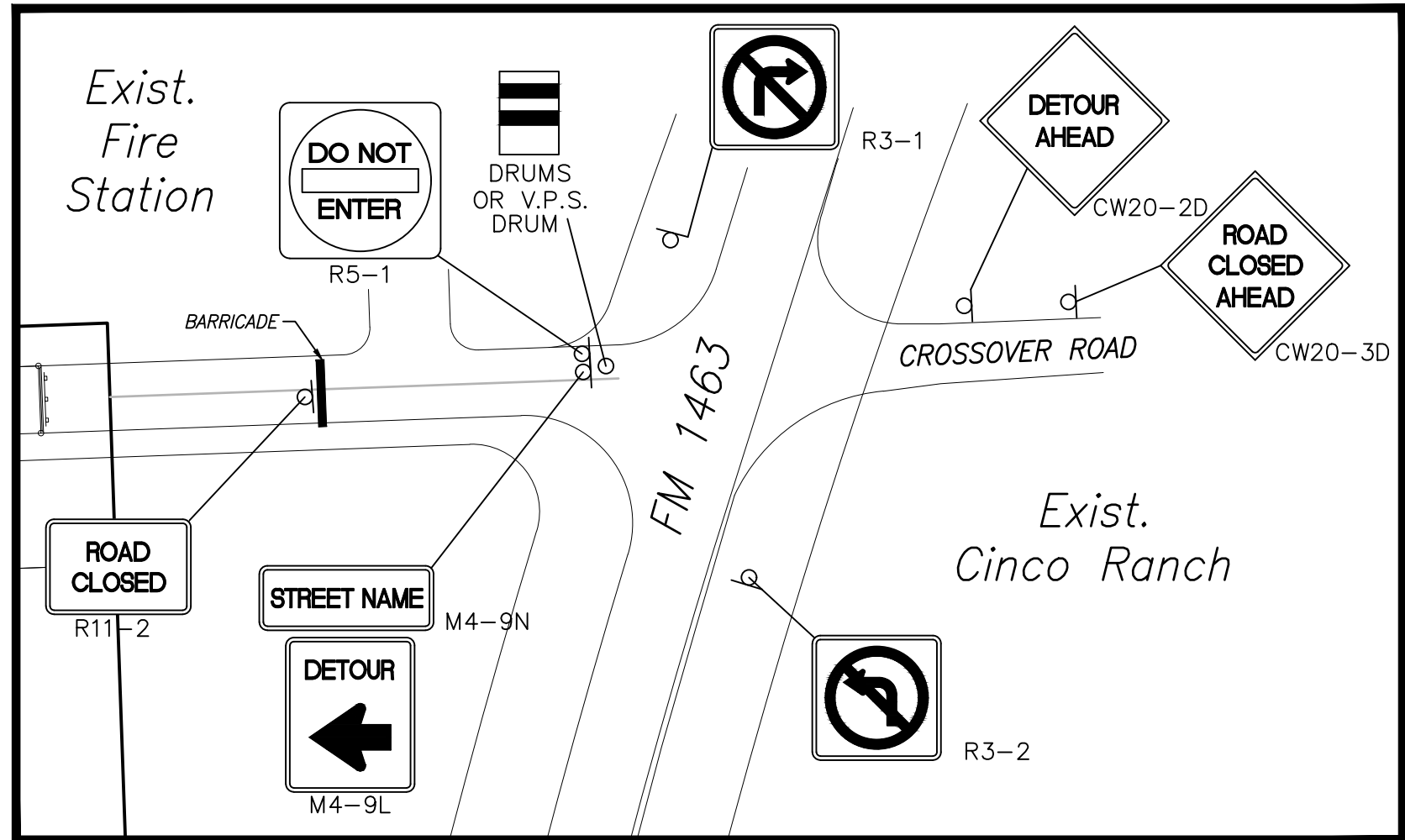
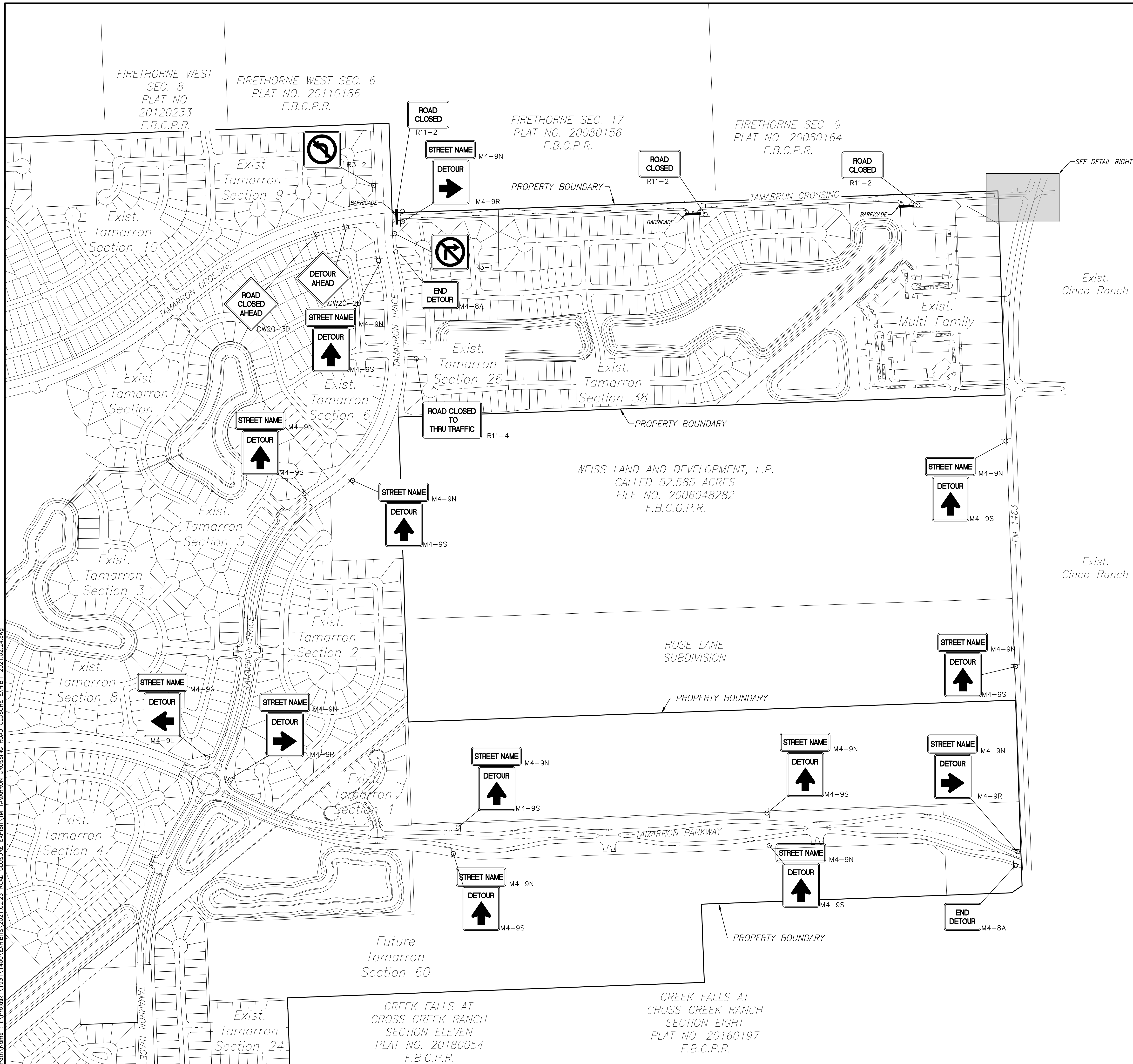
Sincerely,

A handwritten signature in black ink that reads 'Melony F. Gay'.

Melony F. Gay, PE  
Senior Project Manager

MFG/jb

Plot Name : Wd\_24\_Fc\_2021\_1112pt User Name : jacobson Date Time : Wed 24 Feb 2021 11:12am  
Plot Name : Wd\_24\_Fc\_2021\_1112pt User Name : jacobson Date Time : Wed 24 Feb 2021 11:12am  
Plot Name : Wd\_24\_Fc\_2021\_1112pt User Name : jacobson Date Time : Wed 24 Feb 2021 11:12am



SCALE: 1" = 60'

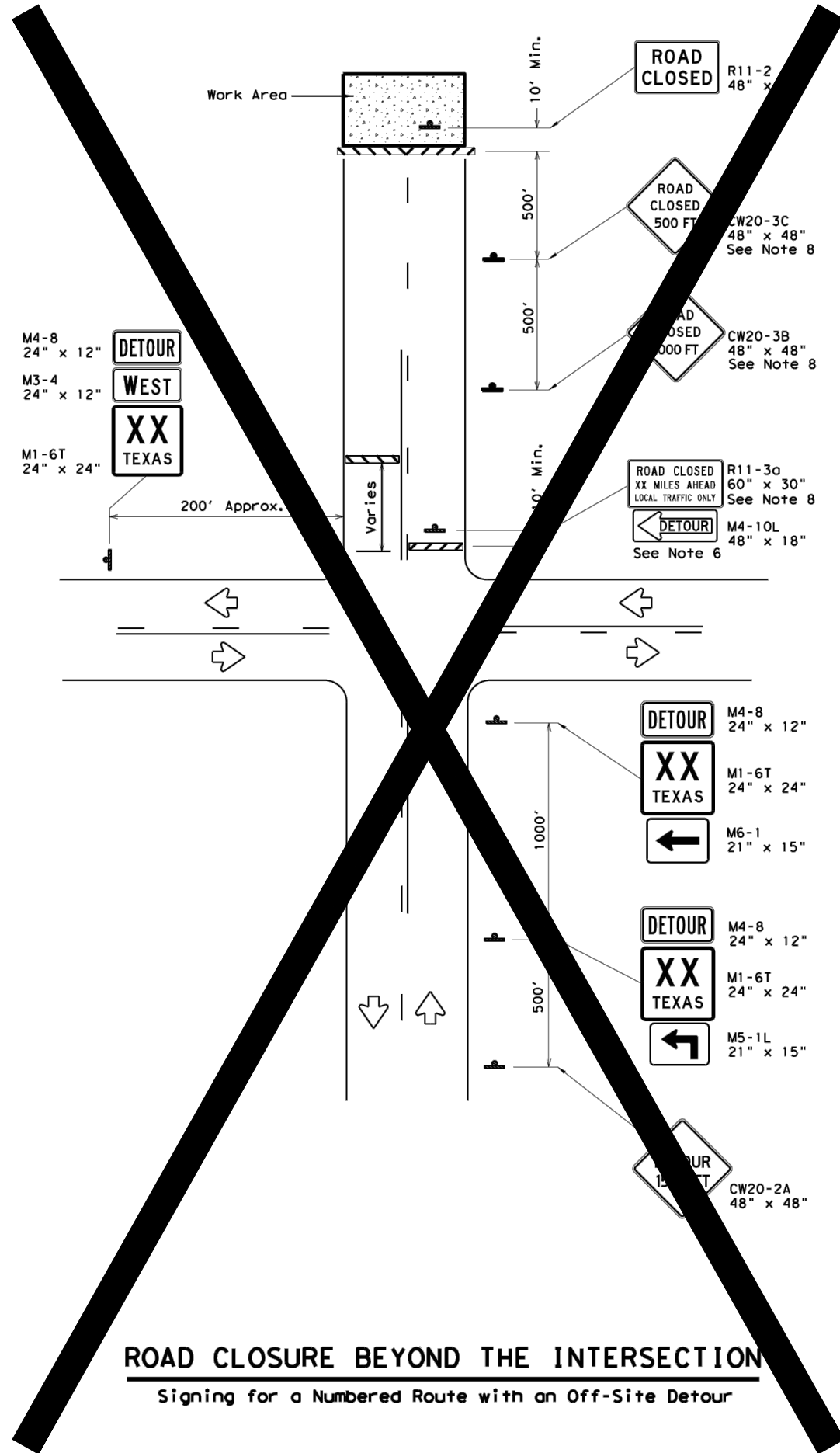
MESSAGE BOARD TO READ:  
ROAD CLOSURE  
3/15/2021-3/19/2021

TAMARRON CROSSING  
ROAD CLOSURE EXHIBIT  
SCALE: 1" = 300'

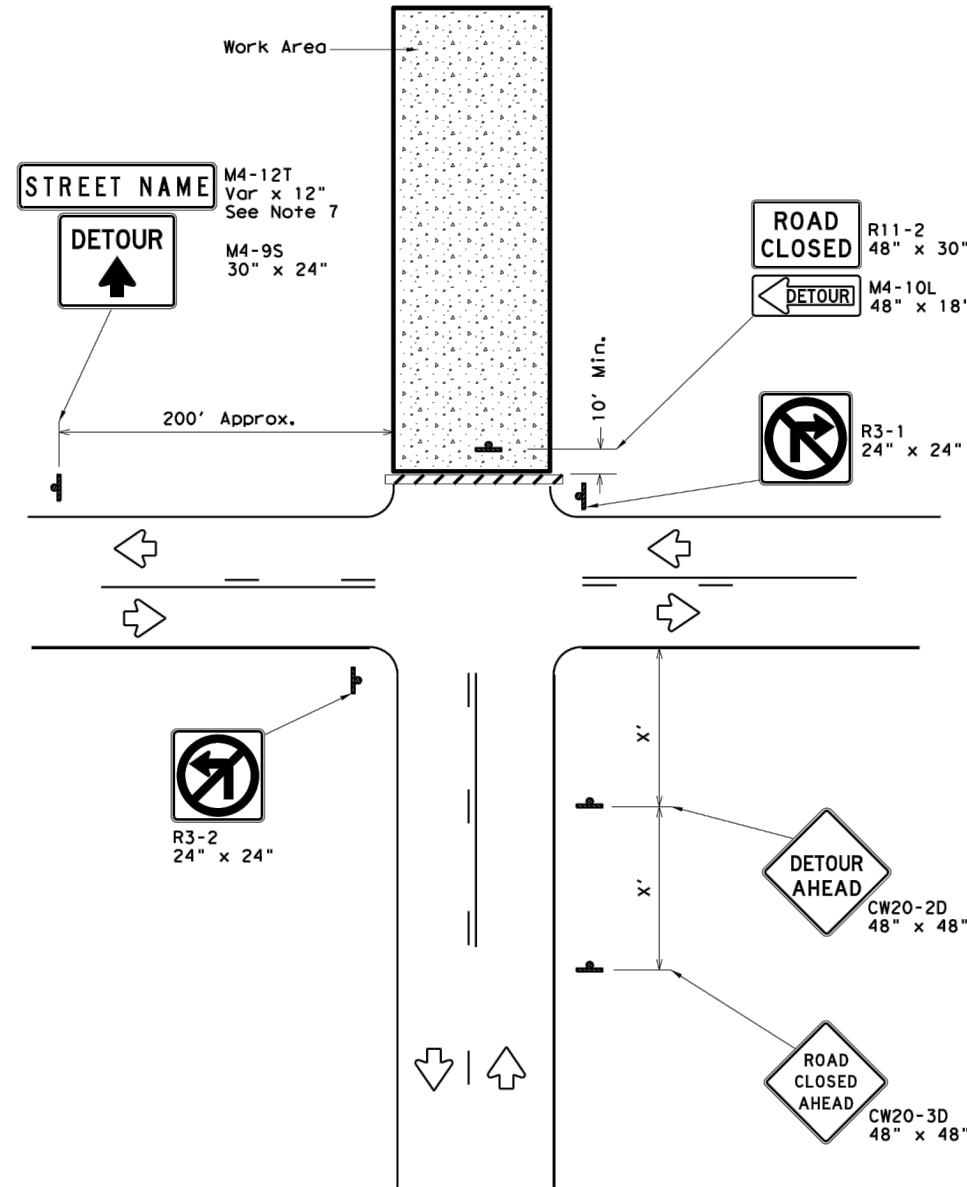
LJA Engineering, Inc.  
1904 W. Grand Parkway North  
Suite 100  
Katy, Texas 77449  
Phone 713.953.5200  
Fax 713.953.5026  
FRN-F-1386

DISCLAIMER: The use of this standard is governed by the "Texas Engineering Practice Act". No warranty of any kind is made by TxDOT for any purpose whatsoever. TxDOT assumes no responsibility for the conversion of this standard to other formats or for incorrect results or damages resulting from its use.

DATE: FILE:



**ROAD CLOSURE BEYOND THE INTERSECTION**  
Signing for a Numbered Route with an Off-Site Detour



**ROAD CLOSURE AT THE INTERSECTION**  
Signing for an Un-numbered Route with an Off-Site Detour

LEGEND	
	Type 3 Barricade
	Sign

Posted Speed *	Minimum Sign Spacing "x" Distance
30	120'
35	160'
40	240'
45	320'
50	400'
55	500'
60	600'
65	700'
70	800'
75	900'

\* Conventional Roads Only

### GENERAL NOTES

1. This sheet is intended to provide details for temporary work zone road closures. For permanent road closure details see the D&OM standards.
2. Barricades used shall meet the requirements shown on Barricade and Construction Standard BC(10) and listed on the Compliant Work Zone Traffic Control Devices List (CWZTCD).
3. Stockpiled materials shall not be placed on the traffic side of barricades.
4. Barricades at the road closure should extend from pavement edge to pavement edge.
5. Detour signing shown is intended to illustrate the type of signing that is appropriate for numbered routes or un-numbered routes as labeled. It does not indicate the full extent of detour signing required. Detour routes should be signed as shown elsewhere in the plans.
6. If the road is open for a significant distance beyond the intersection or there are significant origin/destination points beyond the intersection, the signs and barricades at this location should be located at the edge of the traveled way.
7. The Street Name (M4-12T) sign is to be placed above the DETOUR (M4-9S) sign.
8. For urban areas where there is a shorter distance between the intersection and the actual closure location, the ROAD CLOSED XX MILES AHEAD (R11-3a) sign may be replaced with a ROAD CLOSED TO THRU TRAFFIC (R11-4) sign. If adequate space does not exist between the intersection and the closure a single ROAD CLOSED AHEAD (CW20-3D) sign spaced as per the table above may replace the ROAD CLOSED 1000 FT (CW20-3B) and ROAD CLOSED 500 FT (CW20-3C) signs.
9. Signs and barricades shown shall be subsidiary to Item 502. Locations where these details will be required shall be as shown elsewhere in the plans.

		Traffic Operations Division Standard	
<b>WORK ZONE ROAD CLOSURE DETAILS</b>			
<b>WZ (RCD) - 13</b>			
FILE: wzrcd-13.dgn	DN: TxDOT	CK: TxDOT	DW: TxDOT
© TxDOT August 1995	CONT	SECT	JOB
REVISIONS			HIGHWAY
1-97 4-98 7-13	DIST	COUNTY	SHEET NO.
2-98 3-03			