



PO 194730  
DMS  
REC 564893

AGENDA

**INVOICE NO. FBC2021 JSHARP-1000**

JANUARY 1, 2021

**INVOICE TO:**  
STACY SLAWINSKI, P.E.  
COUNTY ENGINEER  
FORT BEND COUNTY  
301 JACKSON STREET  
RICHMOND, TEXAS 77469

**REFERENCE PROJECT:**  
FORT BEND COUNTY 2017 MOBILITY BOND PROGRAM  
JOHN SHARP DRIVE  
LIMITS: SH 99 TO FM 1464  
PROJECT NUMBER 17421X  
P.O. NUMBER 194730

**SERVICE PERIOD: OCTOBER 14, 2020 TO JANUARY 11, 2021**

**DESCRIPTION: PROFESSIONAL ENGINEERING SERVICES**

SCOPE OF WORK	CONTRACT MAXIMUM FEE TOTAL	AMOUNT AUTHORIZED TO DATE	PERCENT COMPLETE TO DATE	AMOUNT INVOICED TO DATE	AMOUNT PREVIOUSLY INVOICED	AMOUNT PAID TO DATE	AMOUNT DUE THIS INVOICE
PRELIMINARY DESIGN	\$234,466.20	\$234,466.20	30.00%	\$70,339.86	\$0.00	\$0.00	\$70,339.86
PRELIMINARY DESIGN - GEOTECH	\$25,897.00	\$25,897.00	0.00%	\$0.00	\$0.00	\$0.00	\$0.00
PRELIMINARY DESIGN - TOPOGRAPHIC SURVEY	\$23,100.00	\$23,100.00	75.00%	\$17,325.00	\$0.00	\$0.00	\$17,325.00
PRELIMINARY DESIGN - CONTROL AND MONUMENTATION PREPARE SURVEY CONTROL MAP	\$9,470.00	\$9,470.00	75.00%	\$7,102.50	\$0.00	\$0.00	\$7,102.50
PRELIMINARY DESIGN - RIGHT OF WAY MAPPING, PREPARE RIGHT OF WAY MAP	\$24,650.00	\$24,650.00	75.00%	\$18,487.50	\$0.00	\$0.00	\$18,487.50
PRELIMINARY DESIGN - ABSTRACTING	\$4,500.00	\$4,500.00	100.00%	\$4,500.00	\$0.00	\$0.00	\$4,500.00
PRELIMINARY DESIGN - PREPARE PARCELS/METES AND BOUNDS	\$7,845.00	\$7,845.00	0.00%	\$0.00	\$0.00	\$0.00	\$0.00
FINAL DESIGN	\$364,424.00	\$364,424.00	0.00%	\$0.00	\$0.00	\$0.00	\$0.00
CONSTRUCTION PHASE SERVICES	\$39,661.00	\$39,661.00	0.00%	\$0.00	\$0.00	\$0.00	\$0.00
SUBTOTAL	\$734,013.20	\$734,013.20		\$117,754.86	\$0.00	\$0.00	\$117,754.86
SUBTOTAL AMOUNT DUE THESE INVOICE							\$117,754.86
TOTAL AMOUNT DUE THESE INVOICE							\$117,754.86

I CERTIFY THIS INVOICE TO BE TRUE AND CORRECT:

*E. E. Salazar, Jr., P.E.*

EPIFANIO E. SALAZAR, JR., P.E.  
PRINCIPAL



## PROJECT STATUS/PROGRESS REPORT NUMBER 1

### Reference Project:

**Fort Bend County 2017 Mobility Bond Program**

**John Sharp Drive**

**Limits: SH 99 To FM 1464**

**Project Number 17421x**

**P.O. Number 194730**

---

### **Project Status (Preliminary Design) From October 14, 2020 To January 11, 2021:**

Establish a Typical Cross Section – 70% Complete

Determine ROW Acquisition Needs – 70% Complete

Determine Potential Conflicts with existing facilities & utilities – 30% Complete

Identify Critical Path Items – 30% Complete

Identify Problem Areas and Potential Resolutions – 30% Complete

Site Visit – 30% Complete

Prepare a Construction Cost Estimate – 30% Complete

Prepare 30% Completion Plans – 30% Complete

Utility Coordination – 30% Complete

Topographic Survey – 75% Complete

Control & Monumentation - Prepare Survey Control Map – 75% Complete

Right-of-way Parcel Exhibits – 50% Complete

Geotechnical Investigation – 40% Complete

Project Management & Meetings – 30% Complete

Project Bid Process & Meetings – 30% Complete

### **Project Status (Final Design):**

\*Not applicable, project is in preliminary design.

### **Project Status (Construction Phase Services):**

1. None – project is not in construction phase.

### **Planned Activities For Next 30 Days:**

2. SES will continue to work on the PER for this project.
3. Continue to coordinate this project with FBC, FBCDD, TDCJ, TXDOT, GPTRA and PGAL.
4. SES and subproviders will continue to work on the right of way and topographic survey requirements for this project.

Final Design Progress Report Number 1  
**Reference Project:**  
Fort Bend County 2017 Mobility Bond Program  
John Sharp Drive  
Limits: SH 99 To FM 1464  
Project Number 17421x  
P.O. Number 194730  
Page 2 of 2

5. SES and subproviders will continue to work on the geotechnical engineering/investigation requirements for this project.
6. SES and subproviders will continue to work on the traffic signal warrant study requirements for this project.
7. SES will continue to coordinate this project with existing public and private utilities for this project.

**Action Items from LJA/FBC Next 30 Days:**

8. LJA/FBC will secure environmental clearance for this project.

**SES HORIZON CONSULTING ENGINEERS, INC.**  
TBPE Firm Registration Number 3922



Epifanio (Epi) E. Salazar Jr., P.E., Principal



# INVOICE

Epi Salazar  
 SES Horizon Consulting Engineers, Inc.  
 10101 Southwest Freeway, Suite 400  
 Houston, TX 77074

December 31, 2020  
 Project No: 00008268-00  
 Invoice No: 11-200447R

Project 00008268-00 Owens Road Fort Bend County Precinct 4

**Services current through November 20, 2020**

---

Phase 0001 Non-Taxable Phases

**Fee**

Billing Phase	Fee Amount	% Comp To Date	Fee Earned	Previous Billed	Amount Due This Invoice
Topographic Survey	23,100.00	75.00	17,325.00	0.00	17,325.00
Control and Control Map	9,470.00	75.00	7,102.50	0.00	7,102.50
Right of Way Map	24,650.00	75.00	18,487.50	0.00	18,487.50
Abstracting	4,500.00	100.00	4,500.00	0.00	4,500.00
Parcel Metes and Bounds	7,845.00	0.00	0.00	0.00	0.00
<b>Total Fee</b>	<b>69,565.00</b>		<b>47,415.00</b>	<b>0.00</b>	<b>47,415.00</b>
		<b>Total Fee</b>			<b>47,415.00</b>
				<b>Total this Phase</b>	<b>\$47,415.00</b>
				<b>Total this Invoice</b>	<b>\$47,415.00</b>

Email: epi.salazar@seshorizon.com

FOR REDUCED PLANS  
Original scale in inches

PLOTTED ON: 12/22/2020 2:17 PM  
FILE NAME: G:\TXH\PROJECTS\SES-HORIZON\8268-00-OWENS-RD-FBC-PCT-4\SV\04\_FINALS\DRAWINGS\SURVCON.DWG

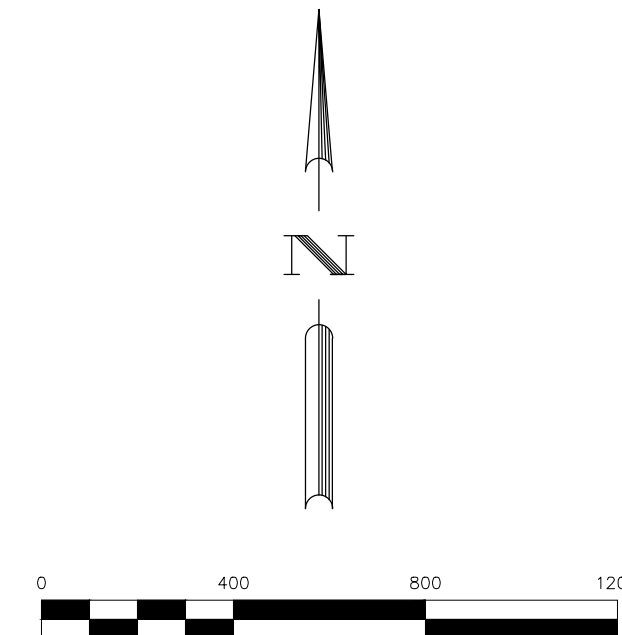
CONTROL POINT SURFACE VALUES SCALE FACTOR=1.00013				
PTNO.	NORTHING	EASTING	ELEVATION	DESCRIPTION
1	13,790,924.28	3,017,513.91	82.17	3/4" I. ROD W/ALUMINUM CAP
2	13,790,131.63	3,017,942.02	79.48	3/4" I. ROD W/ALUMINUM CAP
10	13,788,561.59	3,021,702.59	81.50	5/8" I. ROD W/BGE TRAV CAP
11	13,789,081.18	3,020,887.38	82.51	5/8" I. ROD W/BGE TRAV CAP
12	13,789,326.54	3,019,870.91	81.60	5/8" I. ROD W/BGE TRAV CAP
13	13,789,949.32	3,019,158.68	81.48	5/8" I. ROD W/BGE TRAV CAP
14	13,790,421.36	3,018,308.40	81.95	5/8" I. ROD W/BGE TRAV CAP
50	13,789,226.39	3,020,351.81	81.28	H-20000030
51	13,787,165.19	3,022,353.83	80.86	H-1
52	13,789,434.52	3,022,450.39	83.17	H-2
53	13,787,932.91	3,025,516.32	80.46	H-3
54	13,786,913.78	3,025,537.37	77.79	H-4

BASELINE POINT SURFACE VALUES SCALE FACTOR=1.00013			
PTNO.	NORTHING	EASTING	DESCRIPTION
100	13,790,860.67	3,017,328.39	5+00
101	13,789,748.72	3,019,362.75	PC 28+18.41
102	13,789,736.47	3,019,385.03	PT 28+43.84
103	13,789,402.60	3,019,988.51	PC 35+33.52
104	13,789,137.23	3,020,547.82	PT 41+52.99
105	13,788,265.16	3,022,726.80	65+00

HORIZONTAL AND VERTICAL DATUM IS BASED ON THE FORT BEND COUNTY JOHN SHARP DRIVE SEGMENT 2 PLAN SET PROJECT NO. 17407 ISSUED BY TEJAS SURVEYING

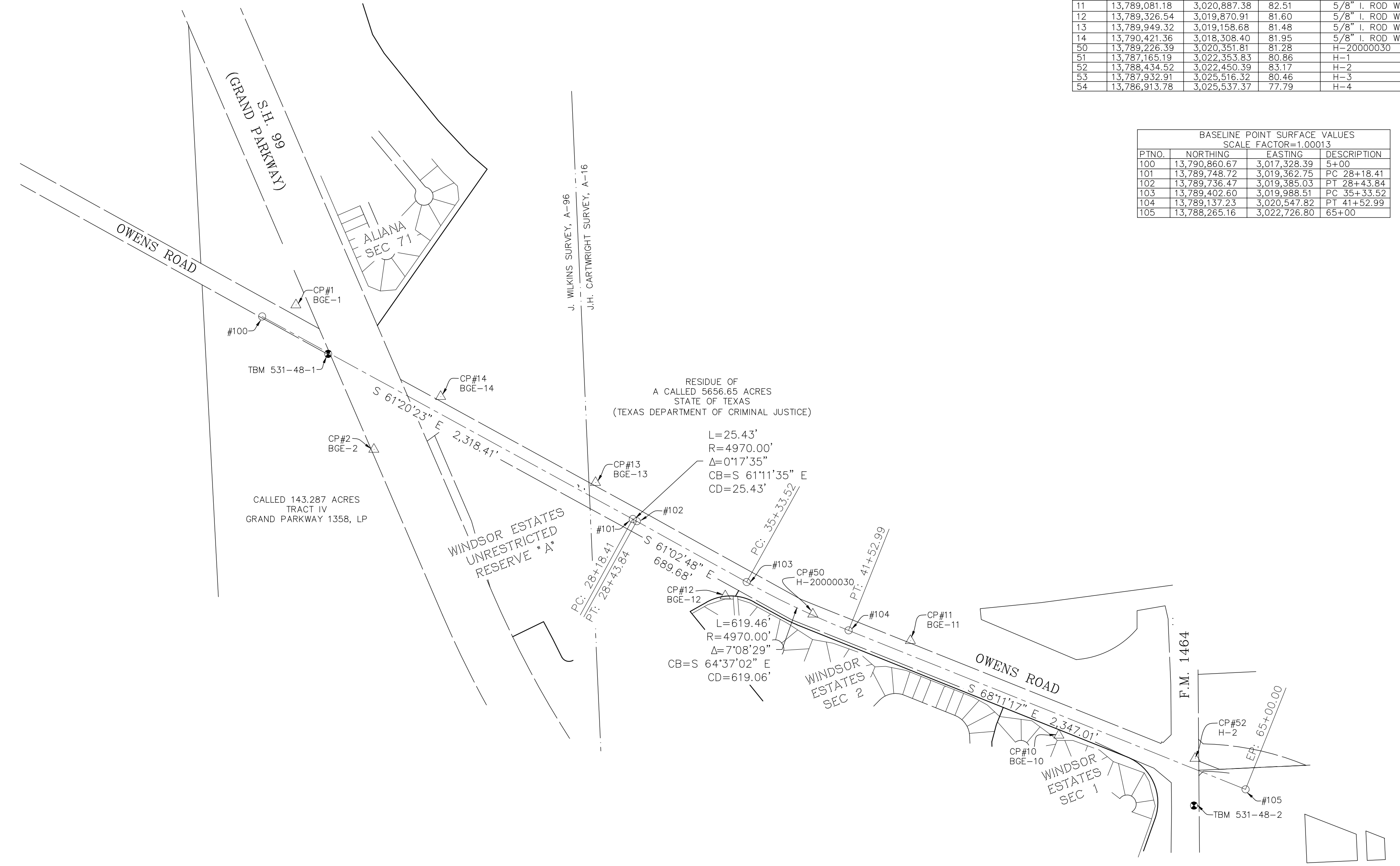
BENCHMARKS:

- H-1: 2" BRASS DISK STAMPED H-1.  
FORT BEND COUNTY MOBILITY DISK  
ELEVATION: 80.86 FEET NAVD-88, 2011 ADJUSTMENT
- H-2: 2" BRASS DISK STAMPED H-2.  
FORT BEND COUNTY MOBILITY DISK  
ELEVATION: 83.17 FEET NAVD-88, 2011 ADJUSTMENT
- H-3: 2" BRASS DISK STAMPED H-3.  
FORT BEND COUNTY MOBILITY DISK  
ELEVATION: 80.46 FEET NAVD-88, 2011 ADJUSTMENT
- H-4: 2" BRASS DISK STAMPED H-4.  
FORT BEND COUNTY MOBILITY DISK  
ELEVATION: 77.79 FEET NAVD-88, 2011 ADJUSTMENT.
- H-2000030: 5/8-INCH IRON ROD W/TXDOT ALUM. DISK.  
STAMPED H-2000030  
ELEVATION: 81.28 FEET NAVD-88, 2011 ADJUSTMENT.
- TBM 538-48-1: BOX OUT ON NORTHWEST CORNER OF WELL PAD SOUTH OF OWENS ROAD WEST OF S.H. 99.  
ELEVATION 82.47 FEET NAVD-88, 2011 ADJUSTMENT
- TBM 538-48-2: BOX OUT ON FIRST "C-1" INLET EAST SIDE OF F.M. 1464 SOUTH OF THE INTERSECTION OF OWENS ROAD AND F.M. 1464.  
ELEVATION 81.53 FEET NAVD-88, 2011 ADJUSTMENT



No.	Date	Revisions	App.

- NOTES:
- BEARING AND COORDINATE ORIENTATION IS BASED ON THE TEXAS COORDINATE SYSTEM OF 1983 (NAD83), SOUTH CENTRAL ZONE 4204.
  - COORDINATE AND DISTANCES SHOWN HEREON ARE U.S. SURVEY FEET SURFACE VALUES AND MAY BE CONVERTED TO GRID BY DIVIDING BY THE TXDOT COMBINED SCALE FACTOR OF 1.00013.
  - HORIZONTAL CONTROL VALUES WERE DERIVED USING GPS CALIBRATION OBSERVATIONS TIED TO THE NORTH AMERICAN DATUM OF 1983 (2011), EPOCH 2010.00.
  - ELEVATIONS ARE BASED ON NAVD 88, 2011 ADJUSTMENT (GEOID 12A), DERIVED BY DIGITAL LEVELING THROUGH THE PUBLISHED VALUE FOR MONUMENT H2000030, ESTABLISHED BY WORTECH LAND SURVEYING, INC. IN SEPTEMBER 2011. SECONDARY CONTROL WAS ESTABLISHED BY BGE, INC. IN NOVEMBER OF 2020.



PRELIMINARY PENDING FINAL REVIEW

CHRIS JORDAN RPLS NO. 6750  
BGE, INC.  
10777 WESTHEIMER, SUITE 400  
HOUSTON, TEXAS 77042  
TELEPHONE: (281) 558-8700

**BGE, Inc.**  
10777 Westheimer, Suite 400, Houston, TX 77042  
Tel: 281-558-8700 • www.bgeinc.com  
TBPLS Licensed Surveying Firm No. 10106500

## SURVEY CONTROL MAP OWENS ROAD FORT BEND COUNTY TEXAS

PARTY CHIEF: B.G.	ISSUE DATE: XXX	SHEET <b>1</b> OF 3
TECHNICIAN: K.B.	SCALE: 1"=100'	
R.P.L.S.: C.J.	JOB NUMBER: 8268-00	
FIELD BOOK NAME: XX	DATE: 12/22/2020	
BASE FILE: G:\TXH\Projects\SES_Horizon\8268-00-Owens_Rd_FBC_Pct_4\SV\01_CoCcs		DATE: 12/22/2020

NO.	REVISIONS	DATE	NAME

**FORT BEND COUNTY  
ENGINEERING DEPARTMENT**



**SES HORIZON**  
CONSULTING ENGINEERS, INC.

10101 Southwest Freeway, Suite 400 Houston, Texas 77074  
(713) 988-5504, Fax (713) 988-1441 www.seshorizon.com

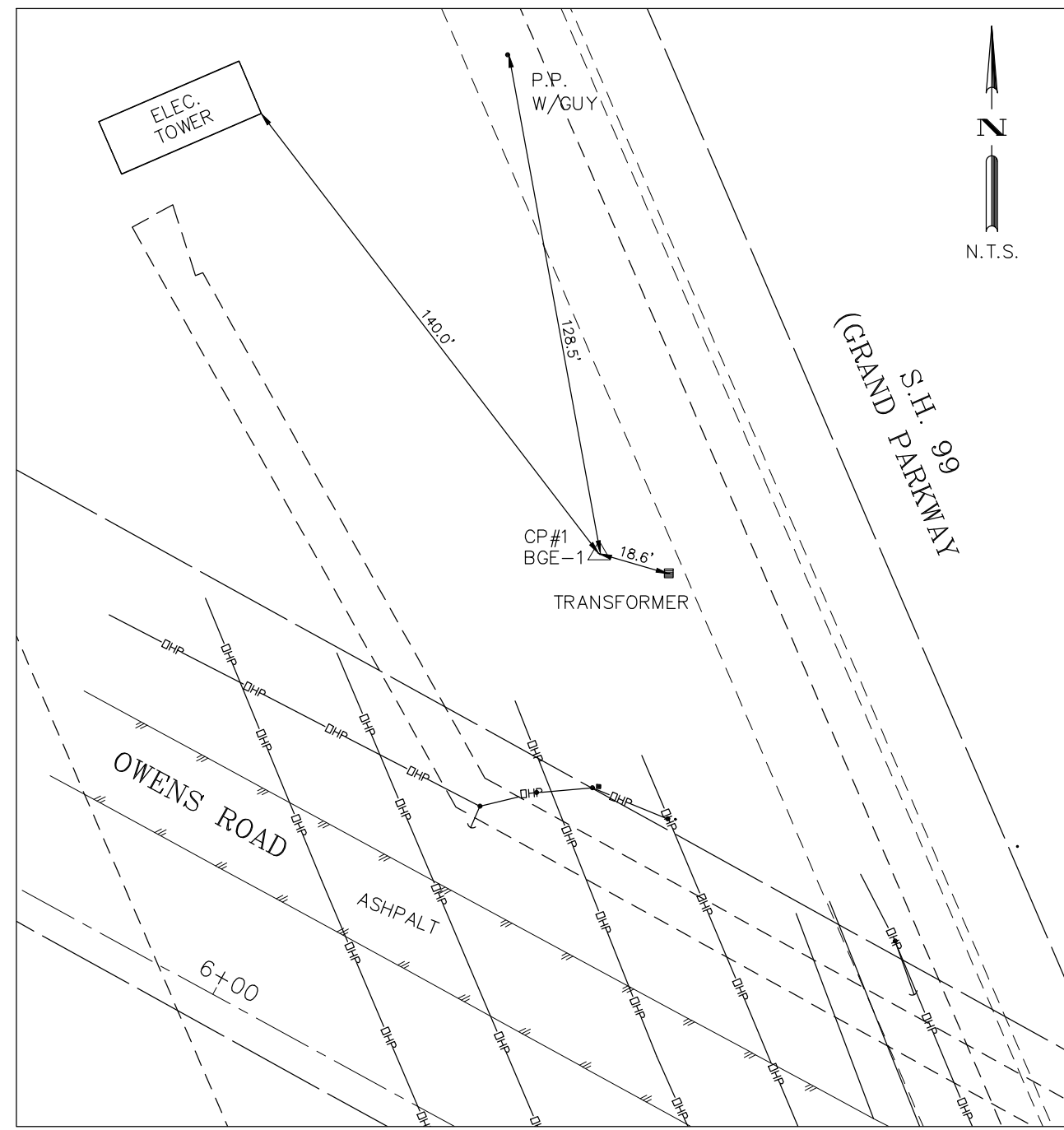
SES HORIZON CONSULTING ENGINEERS, INC.  
TEXAS REGISTERED ENGINEERING FIRM  
F-003922

DOCUMENT IS FOR INTERIM REVIEW AND NOT INTENDED FOR CONSTRUCTION, BIDDING, OR PERMIT PURPOSES.  
OMAR J. CORREDOR P.E.  
TEXAS SERIAL NO. 47746  
DATE: 12/22/2020  
SES HORIZON CONSULTING ENGINEERS, INC.  
TEXAS REGISTERED ENGINEERING FIRM F-003922

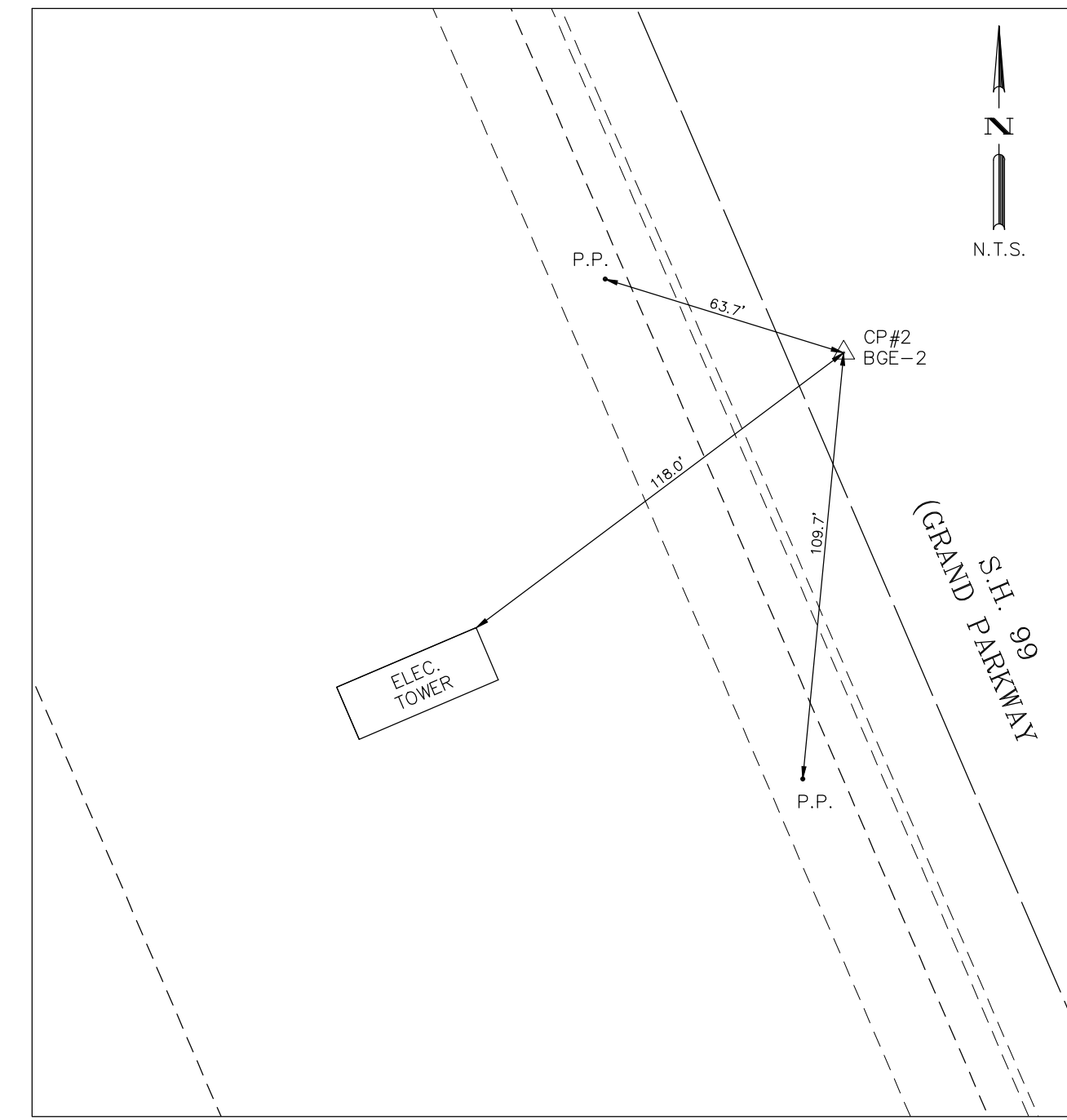
PROJECT TITLE: <b>2020 FORT BEND COUNTY (FBC) MOBILITY PROGRAM JOHN SHARP DRIVE FROM: SH 99 TO FM 1464</b>		JOB NO.:
DRAWN BY:	SHEET DESCRIPTION:	FILE NAME:
CK'D BY:	SCALE:	FILE NO.:
DATE: 12/22/2020	APPROVED BY:	SHT NO. / 56

FOR REDUCED PLANS  
Original scale in inches

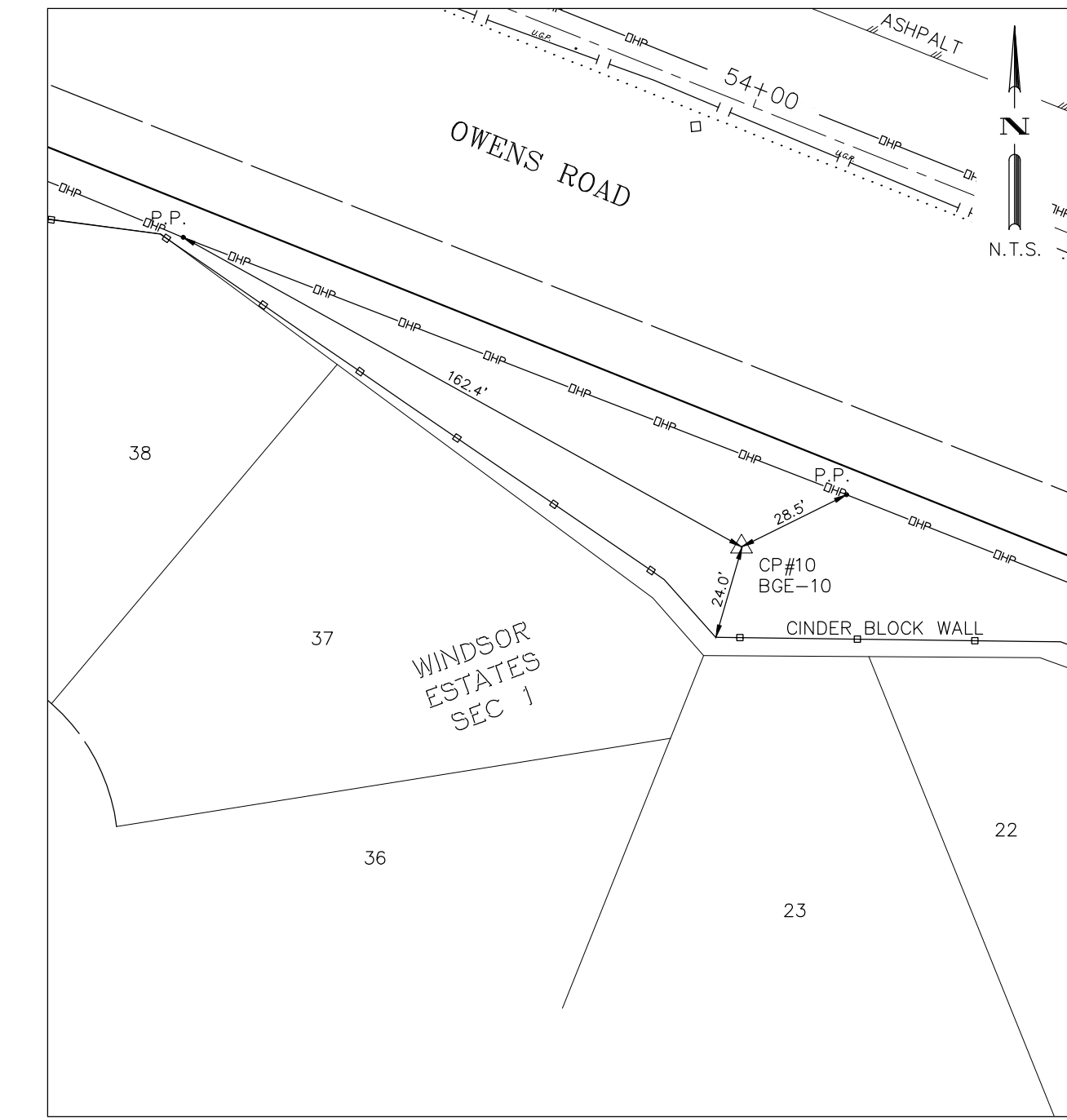
PLOTTED ON: 12/22/2020 2:18 PM  
FILE NAME: G:\TXN\PROJECTS\SES-HORIZON\8268-00-OWENS-RD-FBC-PCT-4\SV\04\_FINALS\DRAWINGS\SURVCON.DWG



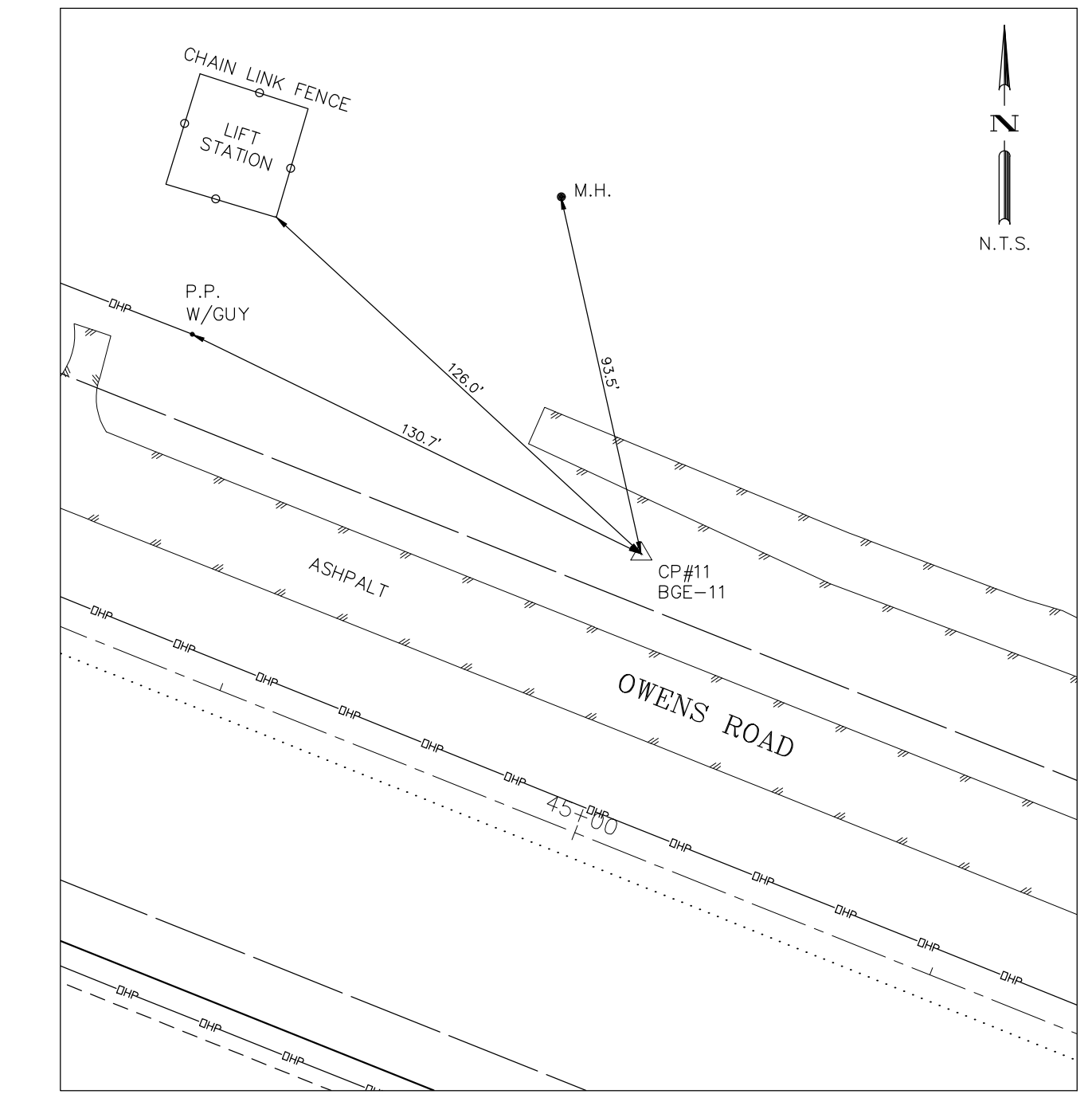
CONTROL POINT # 1  
3/4" IRON ROD SET IN CONCRETE W/ALUMINUM CAP STAMPED "BGE 1"  
NORTHING 13,790,924.28 (SURFACE)  
EASTING 3,017,513.91 (SURFACE)  
ELEVATION 82.17  
STATION 6+32.28  
OFFSET LT. 144.79



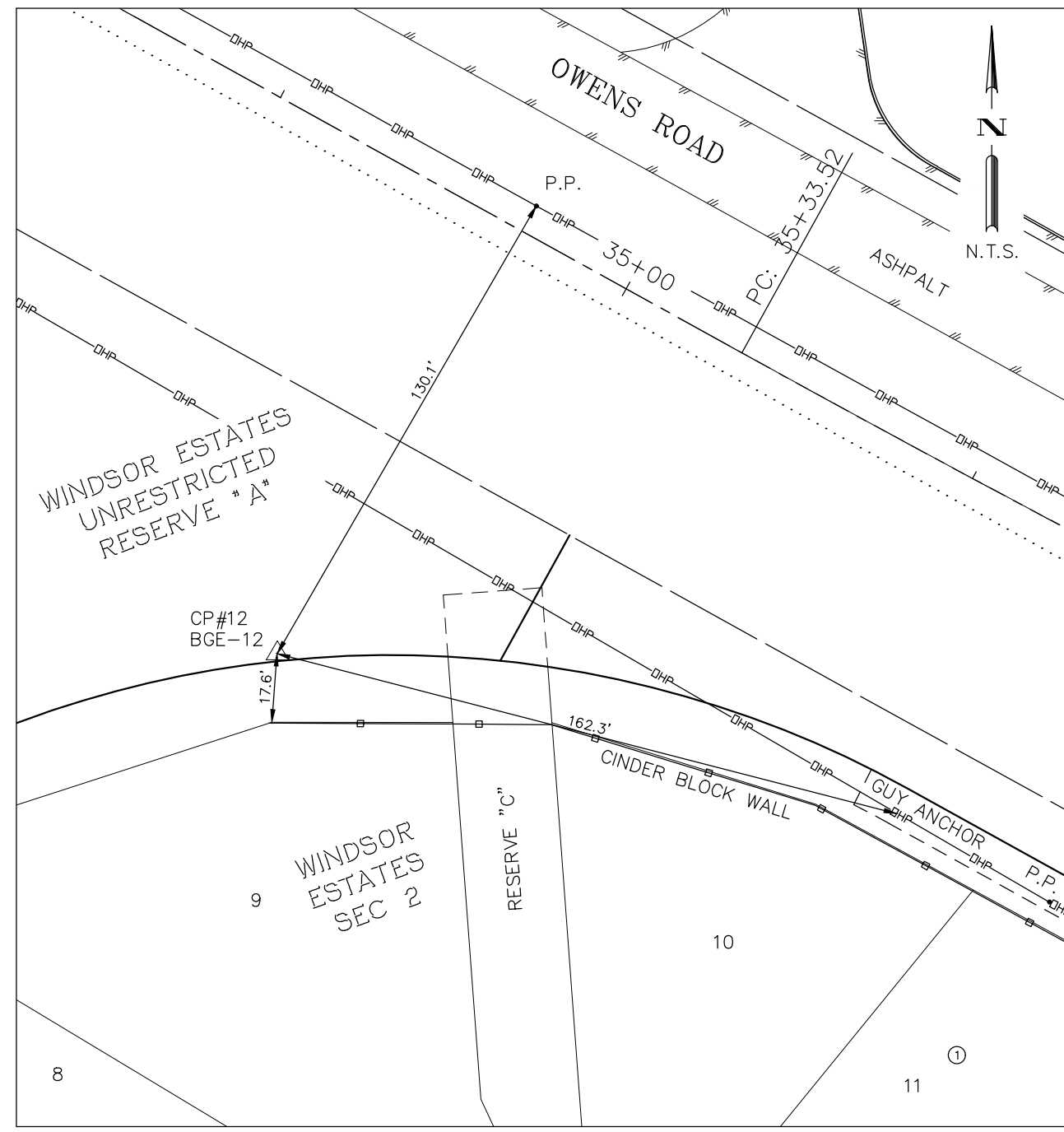
CONTROL POINT # 2  
3/4" IRON ROD SET IN CONCRETE W/ALUMINUM CAP STAMPED "BGE 2"  
NORTHING 2,137,901.6300  
EASTING 3,017,942.0150  
ELEVATION 79.48  
STATION 134+88.10  
OFFSET RT. 345.42



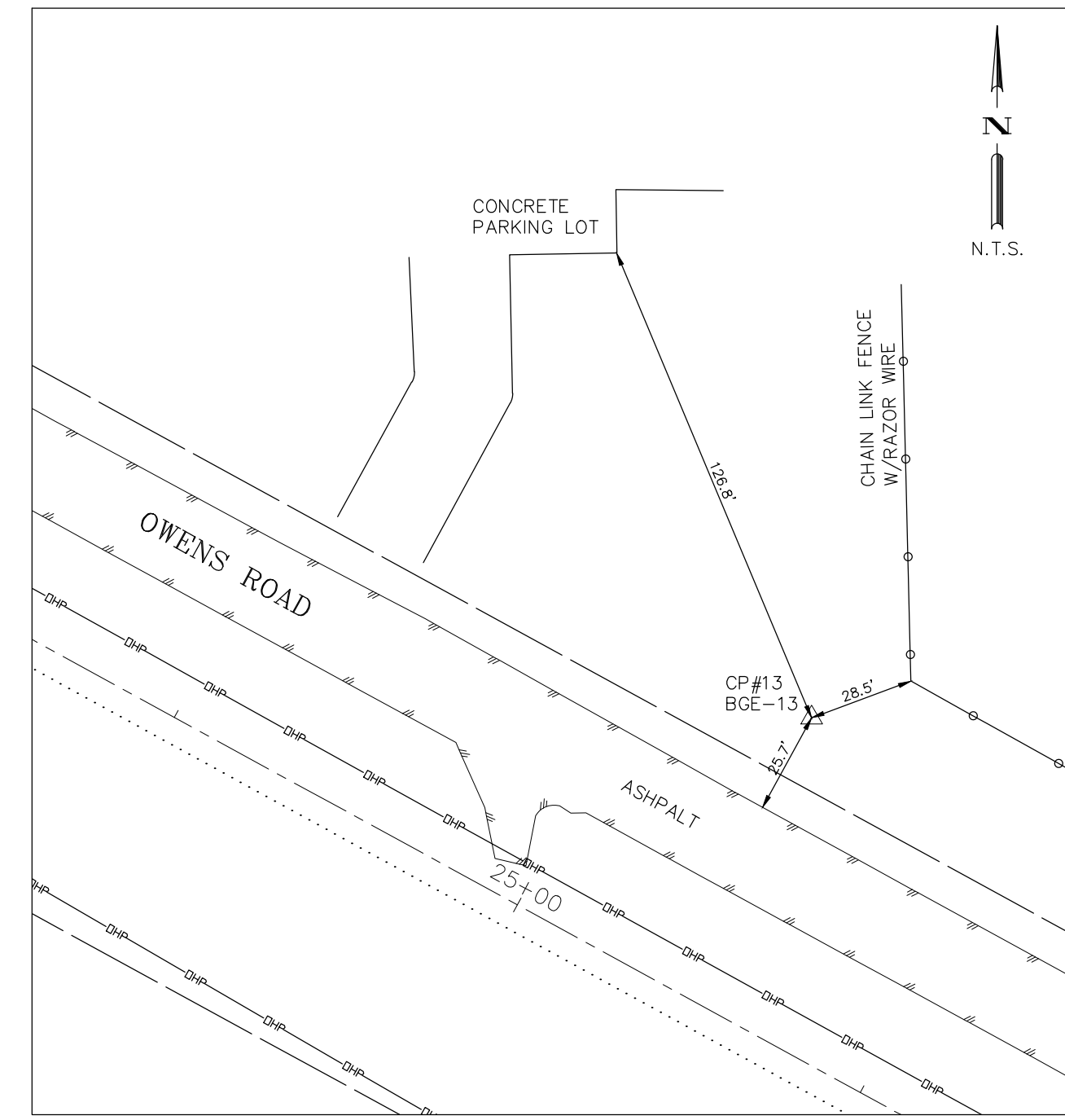
CONTROL POINT # 10  
5/8" IRON ROD SET IN CONCRETE W/PINK PLASTIC CAP STAMPED "BGE TRAV"  
NORTHING 13,788,561.59  
EASTING 3,021,702.59  
ELEVATION 81.50  
STATION 54+38.98  
OFFSET RT. 105.35



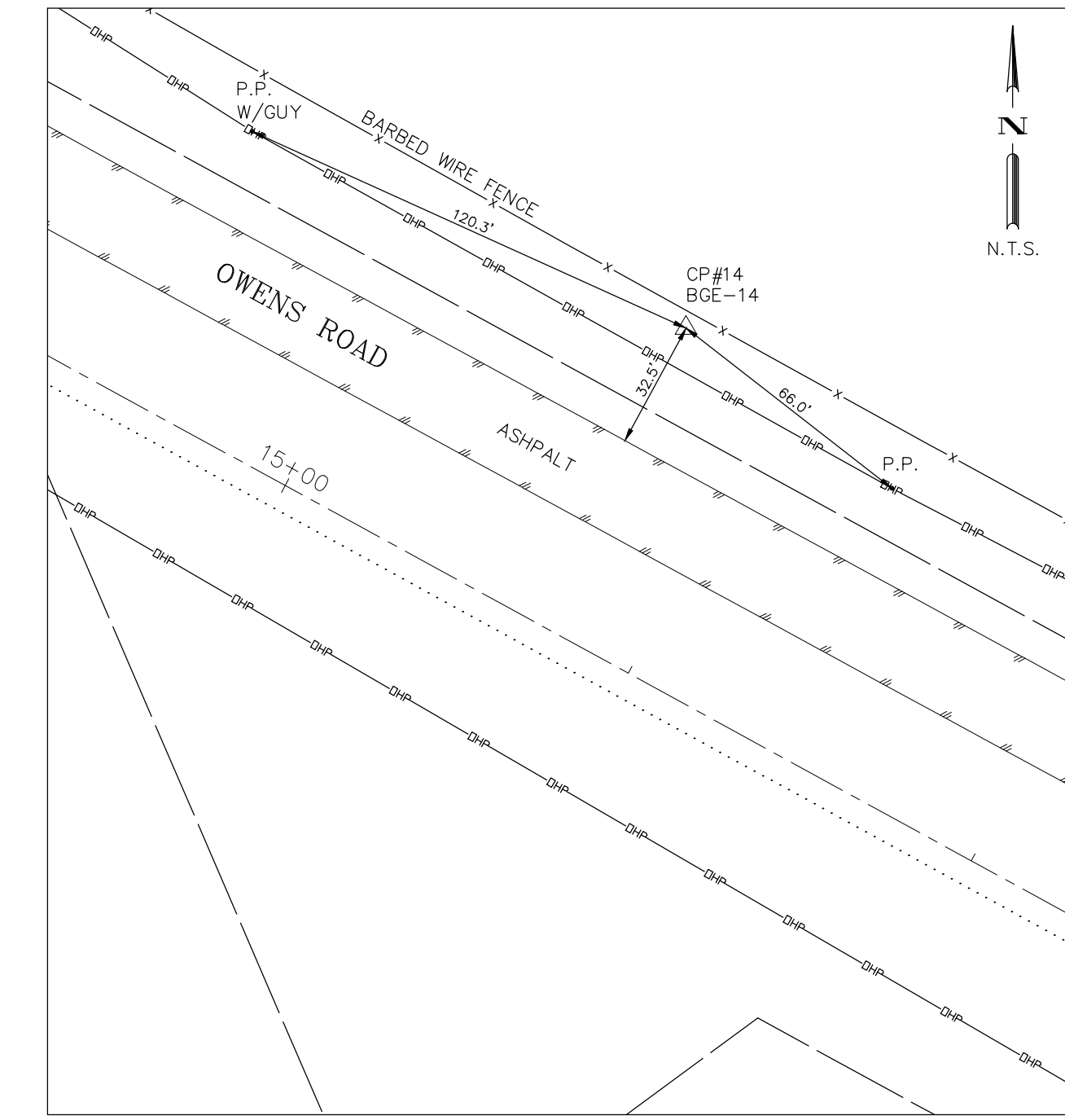
CONTROL POINT # 11  
5/8" IRON ROD SET IN CONCRETE W/PINK PLASTIC CAP STAMPED "BGE TRAV"  
NORTHING 13,789,081.18  
EASTING 3,020,887.38  
ELEVATION 82.51  
STATION 44+89.07  
OFFSET LT. 74.14



CONTROL POINT # 12  
5/8" IRON ROD SET IN CONCRETE W/PINK PLASTIC CAP STAMPED "BGE TRAV"  
NORTHING 13,789,326.54  
EASTING 3,019,870.91  
ELEVATION 81.60  
STATION 34+67.43  
OFFSET RT. 123.48



CONTROL POINT # 13  
5/8" IRON ROD SET IN CONCRETE W/PINK PLASTIC CAP STAMPED "BGE TRAV"  
NORTHING 13,789,949.32  
EASTING 3,019,158.68  
ELEVATION 81.48  
STATION 25+43.13  
OFFSET LT. 78.14



CONTROL POINT # 14  
5/8" IRON ROD SET IN CONCRETE W/PINK PLASTIC CAP STAMPED "BGE TRAV"  
NORTHING 13,790,421.36  
EASTING 3,018,308.40  
ELEVATION 81.95  
STATION 15+70.63  
OFFSET LT. 84.94

PRELIMINARY PENDING FINAL REVIEW

- NOTES:
- BEARING AND COORDINATE ORIENTATION IS BASED ON THE TEXAS COORDINATE SYSTEM OF 1983 (NAD83), SOUTH CENTRAL ZONE 4204.
  - COORDINATE AND DISTANCES SHOWN HEREON ARE U.S. SURVEY FEET SURFACE VALUES AND MAY BE CONVERTED TO GRID BY DIVIDING BY THE TxDOT COMBINED SCALE FACTOR OF 1.00013.
  - HORIZONTAL CONTROL VALUES WERE DERIVED USING GPS CALIBRATION OBSERVATIONS TIED TO THE NORTH AMERICAN DATUM OF 1983 (2011), EPOCH 2010.00.
  - ELEVATIONS ARE BASED ON NAVD 88, 2011 ADJUSTMENT (GEOID 12A), DERIVED BY DIGITAL LEVELING THROUGH THE PUBLISHED VALUE FOR MONUMENT H2000030, ESTABLISHED BY WORTECH LAND SURVEYING, INC. IN SEPTEMBER 2011. SECONDARY CONTROL WAS ESTABLISHED BY BGE INC. IN NOVEMBER OF 2020.

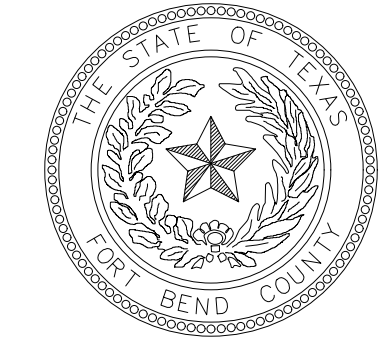
**BGE, Inc.**  
10777 Westheimer, Suite 400, Houston, TX 77042  
Tel: 281-558-8700 • www.bgeinc.com  
TBPLS Licensed Surveying Firm No. 10106500

**SURVEY CONTROL MAP  
OWENS ROAD  
FORT BEND COUNTY  
TEXAS**

PARTY CHIEF:	B.G.	ISSUE DATE:	XXX	SHEET	2
TECHNICIAN:	K.B.	SCALE:	1"=100'	FILE NAME:	
R.P.L.S.:	C.J.	JOB NUMBER:	8268-00	FILE NO.:	
FIELD BOOK NAME:	XX			OF	3
BASE FILE:	G:\TXN\Projects\SES_Horizon\8268-00-OWENS-Rd-FBC-Pct-4\SV\01_Coics				

NO.	REVISIONS	DATE	NAME

**FORT BEND COUNTY  
ENGINEERING DEPARTMENT**



**SES HORIZON**  
CONSULTING ENGINEERS, INC.  
10101 Southwest Freeway, Suite 400 Houston, Texas 77074  
(713) 988-5504, Fax (713) 988-1441 www.seshorizon.com

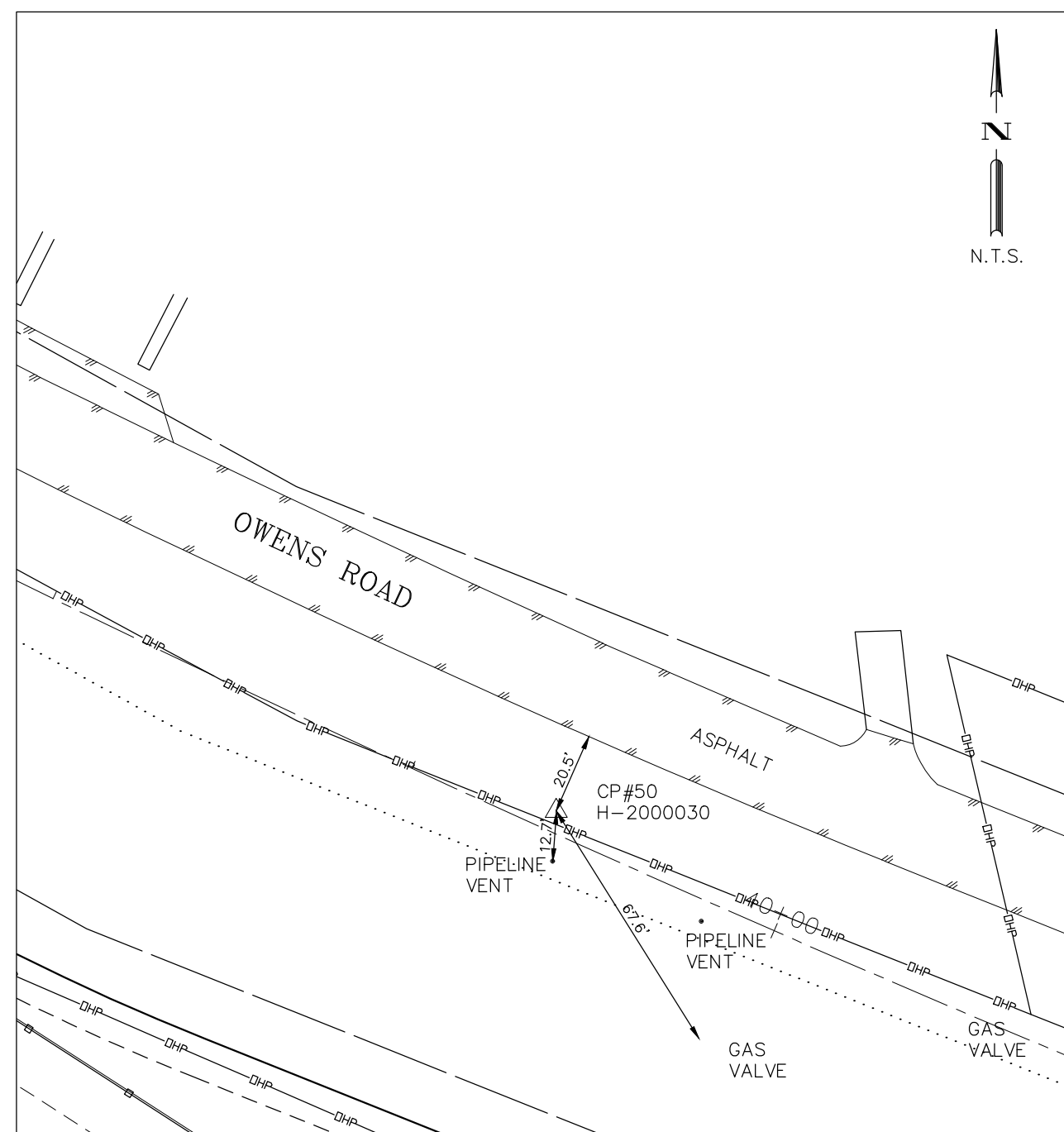
SES HORIZON CONSULTING ENGINEERS, INC.  
TEXAS REGISTERED ENGINEERING FIRM  
F-003922

DOCUMENT IS FOR INTERIM REVIEW AND NOT INTENDED FOR CONSTRUCTION, BIDDING, OR PERMIT PURPOSES.  
OMAR J. CORREDOR P.E.  
TEXAS SERIAL NO. 47746  
DATE: 12/22/2020  
SES HORIZON CONSULTING ENGINEERS, INC.  
TEXAS REGISTERED ENGINEERING FIRM F-003922

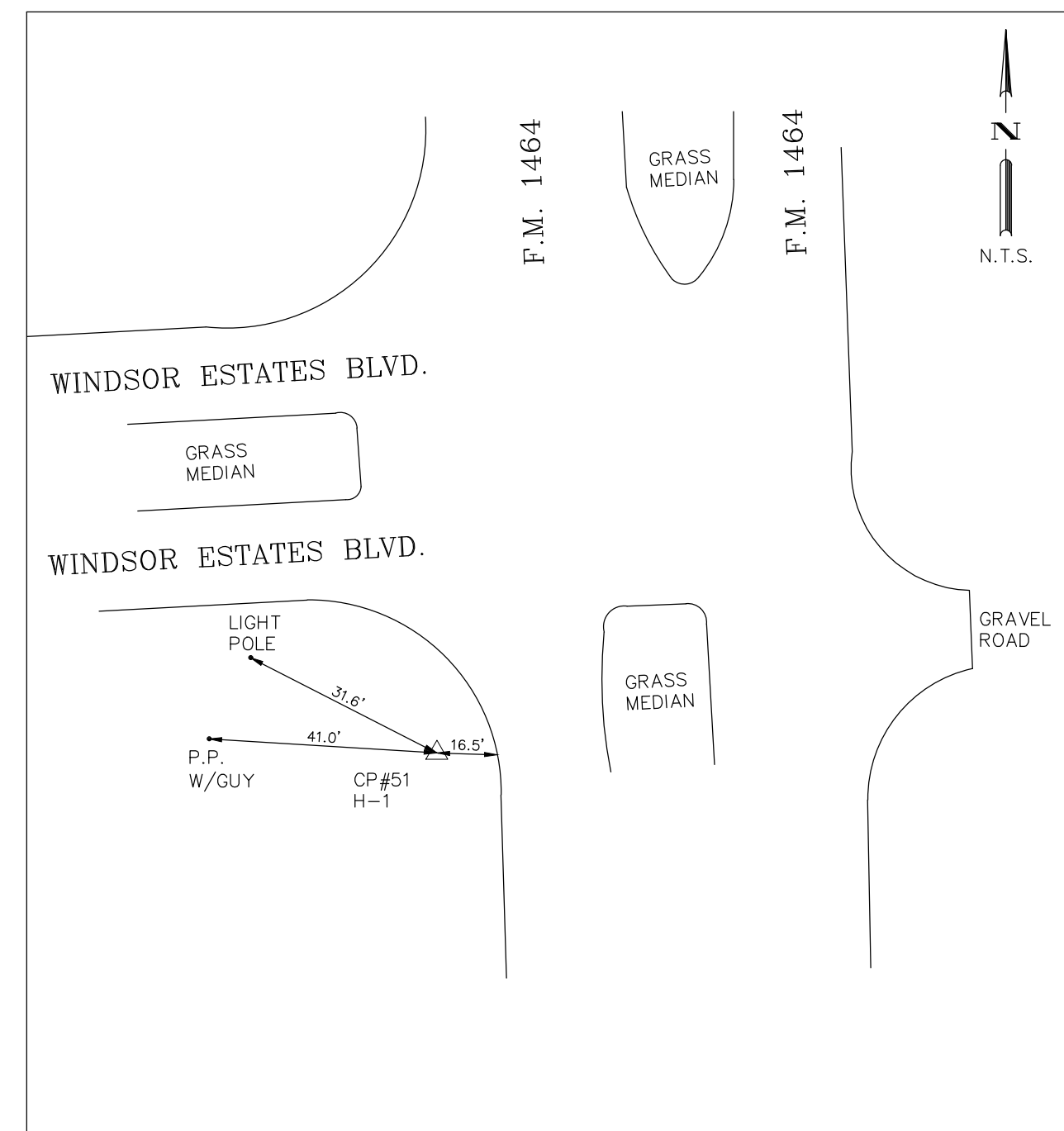
PROJECT NO. 2020 FORT BEND COUNTY (FBC) MOBILITY PROGRAM JOHN SHARP DRIVE FROM: SH 99 TO FM 1464		JOB NO.:
DRAWN BY:	SHEET DESCRIPTION:	FILE NAME:
CK'D BY:		FILE NO.:
SCALE:		SHT NO.:
DATE: 12/22/2020	APPROVED BY:	/56

FOR REDUCED PLANS  
Original scale in inches

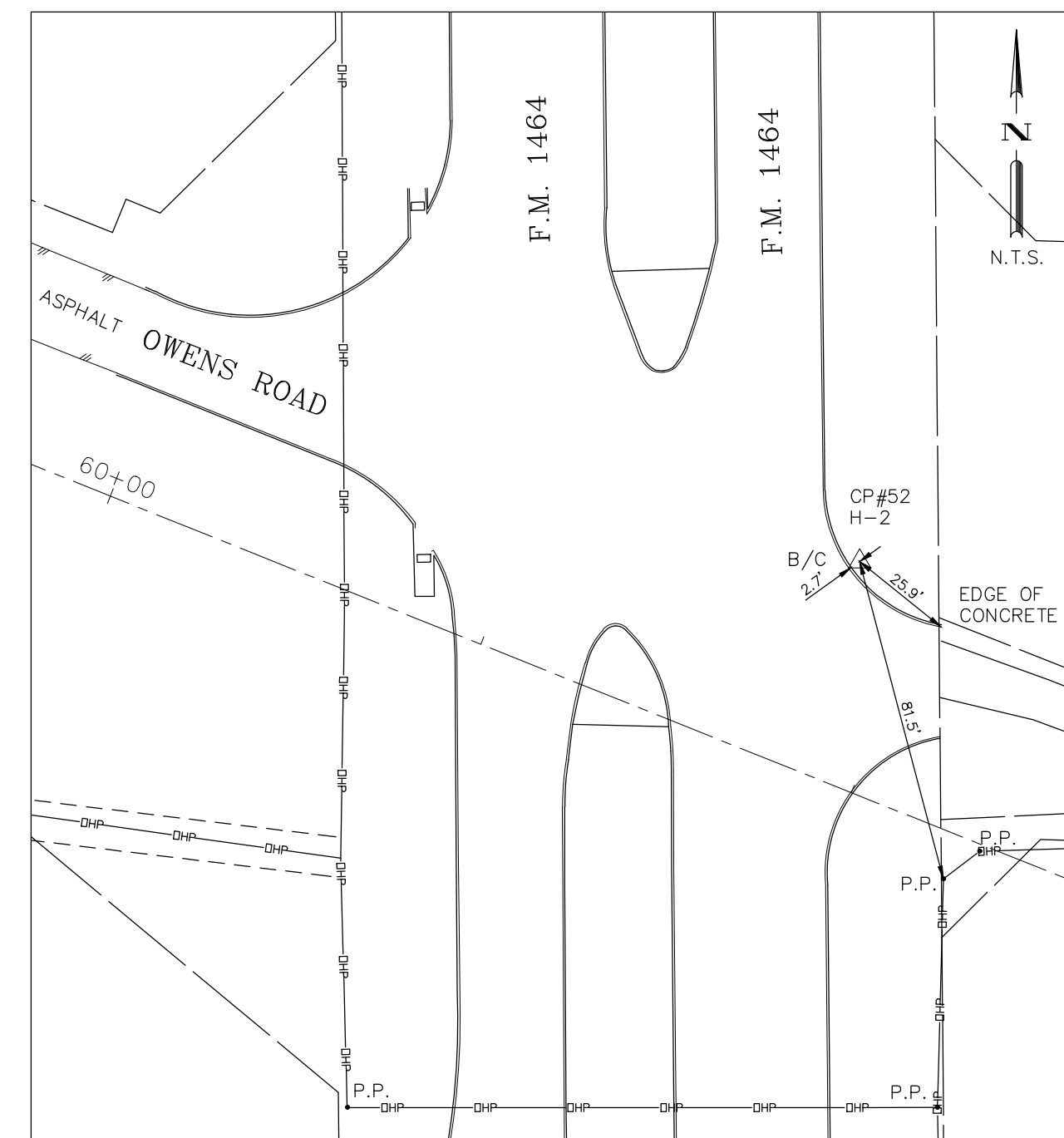
PLOTTED ON: 12/22/2020 2:18 PM  
FILE NAME: G:\TXH\PROJECTS\SES-HORIZON\8268-00-OWENS-RD\_FBC\_PCT\_4\SV\04\_FINALS\DRAWINGS\SURVCON.DWG



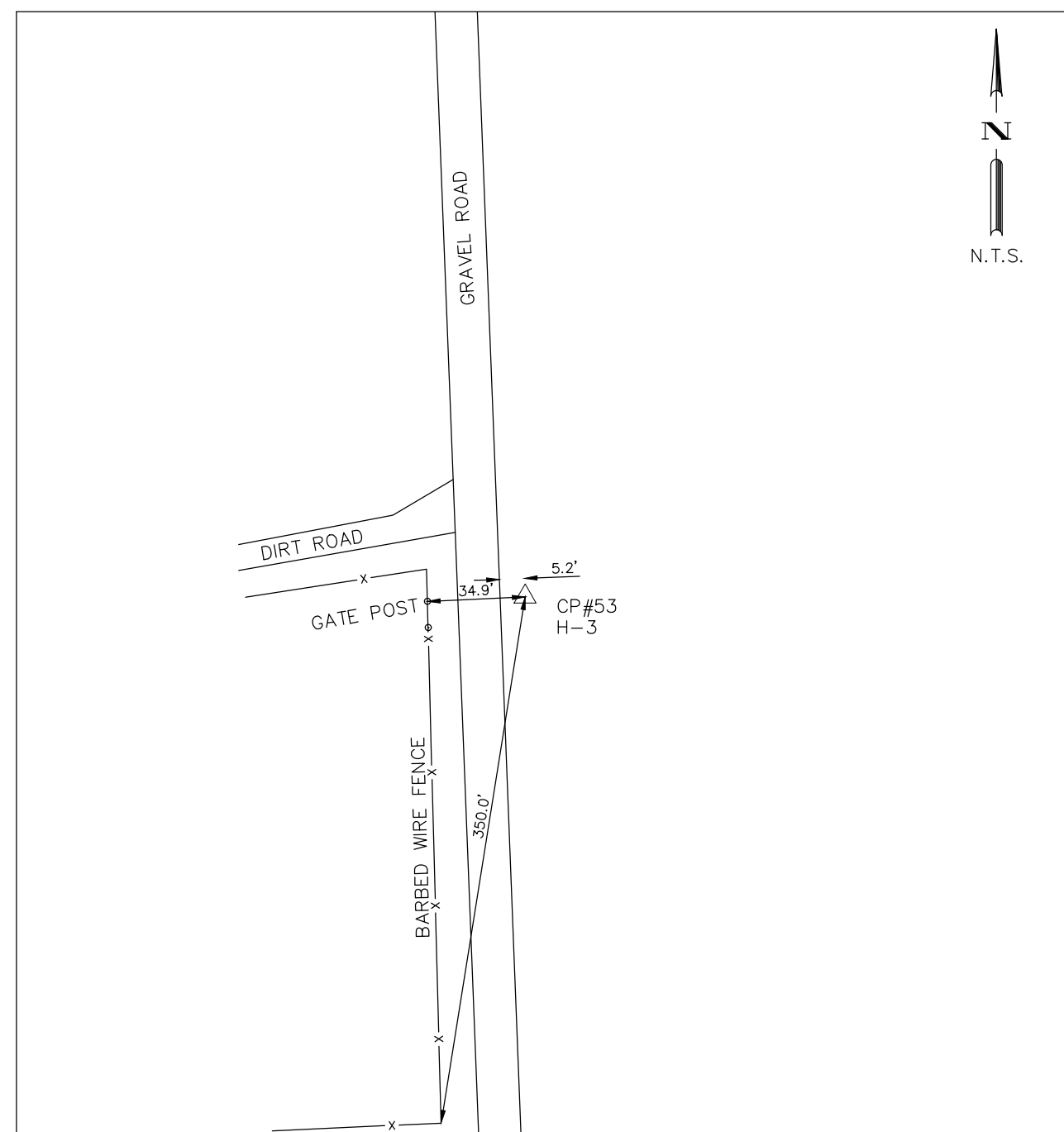
CONTROL POINT # 50  
5/8" I. ROD W/ALUMINUM TXDOT DISK STAMPED "H-2000030"  
NORTHING 13,789,226.39  
EASTING 3,020,351.81  
ELEVATION 81.28  
STATION 36+37.59  
OFFSET LT. 5.29



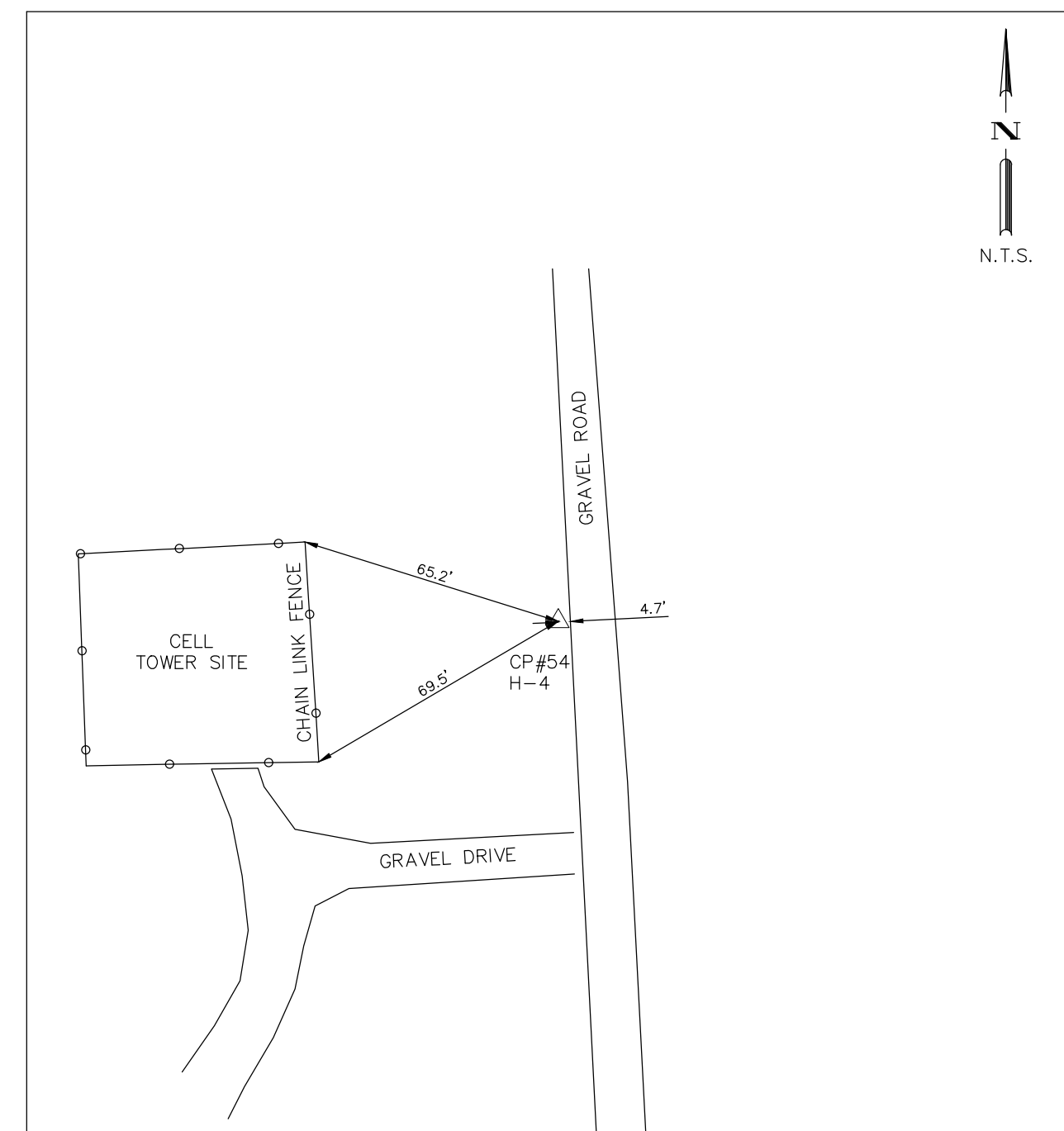
CONTROL POINT # 51  
2" BRASS FORT BEND MOBILITY DISK STAMPED "H-1"  
NORTHING 13,787,165.19  
EASTING 3,022,353.83  
ELEVATION 80.86



CONTROL POINT # 52  
2" BRASS FORT BEND MOBILITY DISK STAMPED "H-2"  
NORTHING 13,788,434.52  
EASTING 3,022,450.39  
ELEVATION 83.17  
STATION 61+80.45  
OFFSET LT. 54.53



CONTROL POINT # 53  
2" BRASS FORT BEND MOBILITY DISK STAMPED "H-3"  
NORTHING 13,787,932.91  
EASTING 3,025,516.32  
ELEVATION 80.46



CONTROL POINT # 54  
2" BRASS FORT BEND MOBILITY DISK STAMPED "H-4"  
NORTHING 13,786,913.78  
EASTING 3,025,537.37  
ELEVATION 77.79

PRELIMINARY PENDING FINAL REVIEW

NOTES:

1. BEARING AND COORDINATE ORIENTATION IS BASED ON THE TEXAS COORDINATE SYSTEM OF 1983 (NAD83), SOUTH CENTRAL ZONE 4204.
2. COORDINATE AND DISTANCES SHOWN HEREON ARE U.S. SURVEY FEET SURFACE VALUES AND MAY BE CONVERTED TO GRID BY DIVIDING BY THE TXDOT COMBINED SCALE FACTOR OF 1.00013.
3. HORIZONTAL CONTROL VALUES WERE DERIVED USING GPS CALIBRATION OBSERVATIONS TIED TO THE NORTH AMERICAN DATUM OF 1983 (2011), EPOCH 2010.00.
4. ELEVATIONS ARE BASED ON NAVD 88, 2011 ADJUSTMENT (GEOID 12A), DERIVED BY DIGITAL LEVELING THROUGH THE PUBLISHED VALUE FOR MONUMENT H2000030, ESTABLISHED BY WORTECH LAND SURVEYING, INC. IN SEPTEMBER 2011. SECONDARY CONTROL WAS ESTABLISHED BY BGE INC. IN NOVEMBER OF 2020.

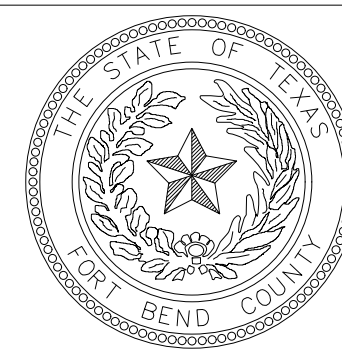
**BGE, Inc.**  
10777 Westheimer, Suite 400, Houston, TX 77042  
Tel: 281-558-8700 • www.bgeinc.com  
TBPLS Licensed Surveying Firm No. 10106500

**SURVEY CONTROL MAP  
OWENS ROAD  
FORT BEND COUNTY  
TEXAS**

PARTY CHIEF:	B.G.	ISSUE DATE:	XXX	SHEET <b>3</b> OF <b>3</b>
TECHNICIAN:	K.B.	SCALE:	1"=100'	
R.P.L.S.:	C.J.	JOB NUMBER:	8268-00	
FIELD BOOK NAME:	XX			
BASE FILE:	G:\TXH\Projects\SES_Horizon\8268-00-Owens_Rd_FBC_Pct_4\SV\01_Coords			

NO.	REVISIONS	DATE	NAME

**FORT BEND COUNTY  
ENGINEERING DEPARTMENT**



**SES HORIZON  
CONSULTING ENGINEERS, INC.**  
10101 Southwest Freeway, Suite 400 Houston, Texas 77074  
(713) 988-5504, Fax (713) 988-1441 www.seshorizon.com

SES HORIZON CONSULTING ENGINEERS, INC.  
TEXAS REGISTERED ENGINEERING FIRM  
F-003922

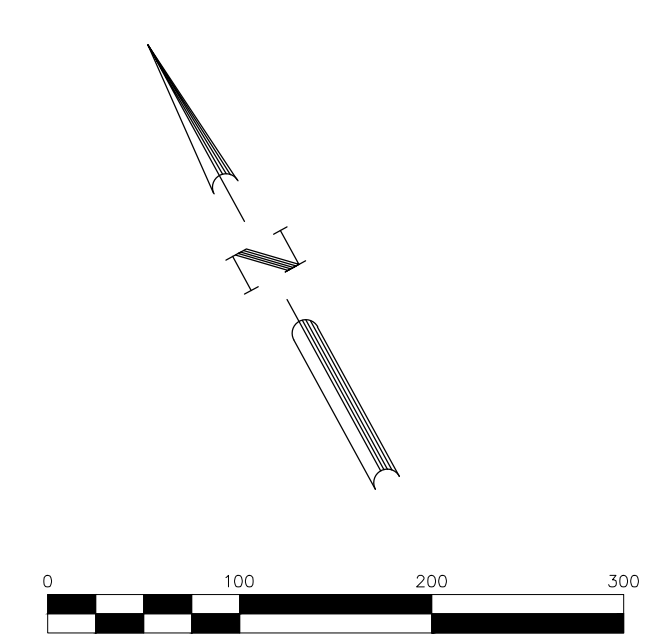
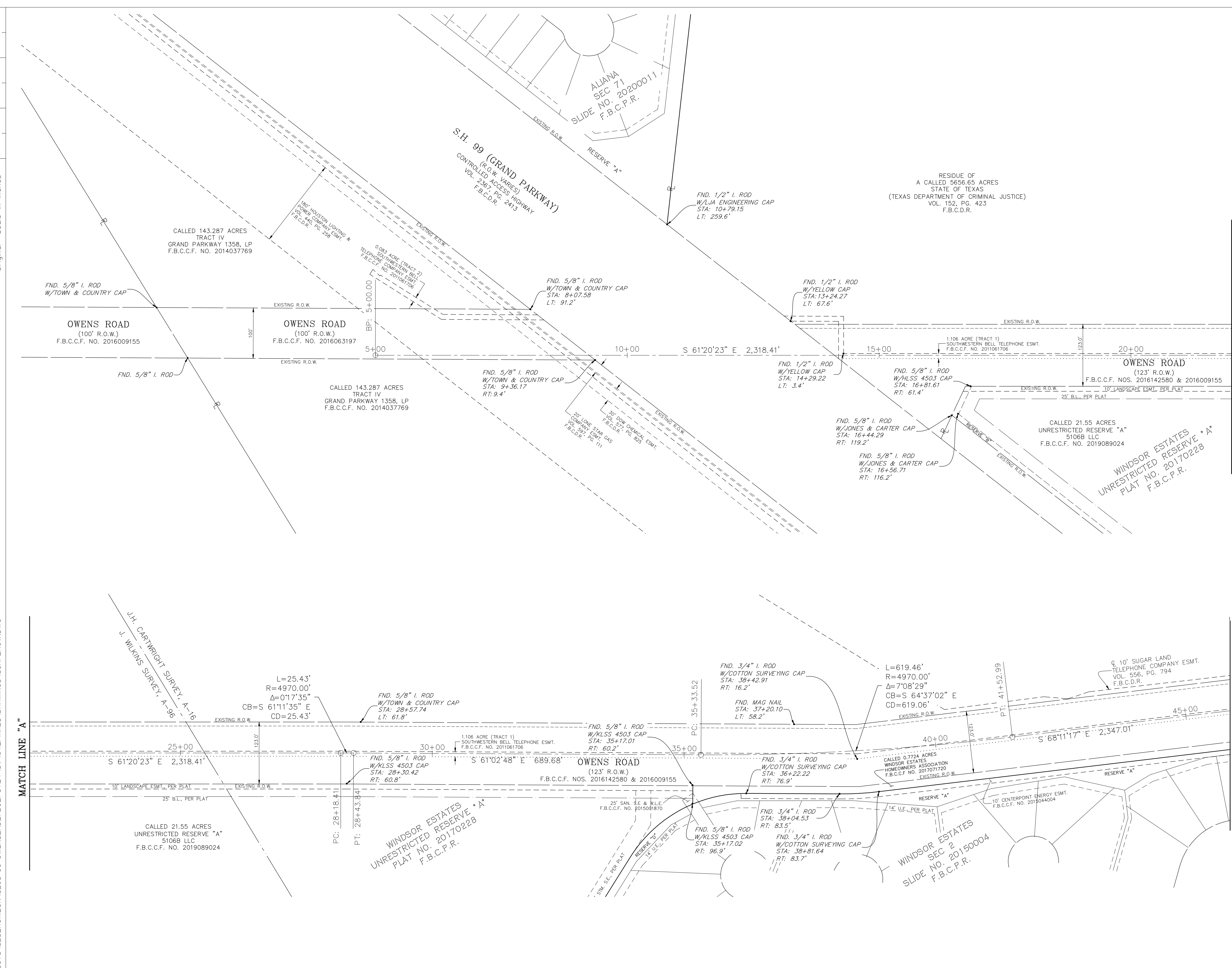
DOCUMENT IS FOR INTERIM REVIEW AND NOT INTENDED FOR CONSTRUCTION, BIDDING, OR PERMIT PURPOSES.  
OMAR J. CORREDOR P.E.  
TEXAS SERIAL NO. 47746  
DATE: 12/22/2020  
SES HORIZON CONSULTING ENGINEERS, INC.  
TEXAS REGISTERED ENGINEERING FIRM F-003922

PROJECT TITLE <b>2020 FORT BEND COUNTY (FBC) MOBILITY PROGRAM JOHN SHARP DRIVE FROM: SH 99 TO FM 1464</b>		JOB NO.:
DRAWN BY:	SHEET DESCRIPTION:	FILE NAME:
CK'D BY:	DATE:	FILE NO.:
SCALE:	APPROVED BY:	SHT NO.:
DATE: 12/22/2020		/56

No.	Date	Revisions	App.

FOR REDUCED PLANS  
Original scale in inches

PLOTTED ON: 12/22/2020 2:23 PM  
FILE NAME: G:\TXN\PROJECTS\SES-HORIZON\8268-00-OWENS-RD-FBC\_PCT\_4\SVY\04\_FINALS\DRAWINGS\SURF\_ROW.DWG



**LEGEND**

B.L.	BUILDING LINE
ESMT.	EASEMENT
F.B.C.C.F.	FORT BEND COUNTY CLERK'S FILE
F.B.C.D.R.	FORT BEND COUNTY DEED RECORDS
F.C.P.R.	FORT BEND COUNTY PLAT RECORDS
F.C.	FILM CODE
FND.	FOUND
I.	IRON
N.O.	NUMBER
NOS.	NUMBERS
PG.	PAGE
R.O.W.	RIGHT-OF-WAY
SAN.	SANITARY
S.E.	SEWER EASEMENT
STM.	STORM
U.E.	UTILITY EASEMENT
VOL.	VOLUME
W.L.E.	WATER LINE EASEMENT

- NOTES:**
- BEARING AND COORDINATE ORIENTATION IS BASED ON THE TEXAS COORDINATE SYSTEM OF 1983 (NAD83), SOUTH CENTRAL ZONE 4204.
  - DISTANCES SHOWN HEREON ARE U.S. SURVEY FEET SURFACE VALUES AND MAY BE CONVERTED TO GRID BY DIVIDING BY THE TxDOT COMBINED SCALE FACTOR OF 1.00013.

**PRELIMINARY PENDING FINAL REVIEW**

CHRIS JORDAN RPLS NO. 6750  
BGE, INC.  
10777 WESTHEIMER, SUITE 400  
HOUSTON, TEXAS 77042  
TELEPHONE: (281) 558-8700

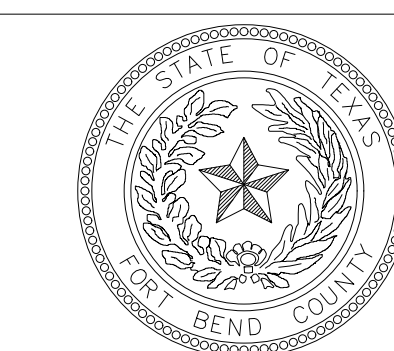
**BGE, Inc.**  
10777 Westheimer, Suite 400, Houston, TX 77042  
Tel: 281-558-8700 • www.bgeinc.com  
TBPLS Licensed Surveying Firm No. 10106500

**R.O.W. CONTROL MAP  
OWENS ROAD  
FORT BEND COUNTY  
TEXAS**

PARTY CHIEF:	B.G.	ISSUE DATE:	XXX	SHEET 1 OF 2
TECHNICIAN:	K.B.	SCALE:	1"=100'	
R.P.L.S.:	C.J.	JOB NUMBER:	8268-00	
FIELD BOOK NAME:	XX			
BASE FILE:	G:\TXN\Projects\SES_Horizon\8268-00-Owens_Rd_FBC_Pct_4\SVY\04_CoDec			

NO.	REVISIONS	DATE	NAME

**FORT BEND COUNTY  
ENGINEERING DEPARTMENT**



**SES HORIZON  
CONSULTING ENGINEERS, INC.**  
10101 Southwest Freeway, Suite 400 Houston, Texas 77074  
(713) 988-5504, Fax (713) 988-1441 www.seshorizon.com

SES HORIZON CONSULTING ENGINEERS, INC.  
TEXAS REGISTERED ENGINEERING FIRM  
F-003922

DOCUMENT IS FOR INTERIM REVIEW AND NOT INTENDED FOR CONSTRUCTION, BIDDING, OR PERMIT PURPOSES.  
OMAR J. CORREDOR P.E.  
TEXAS SERIAL NO. 47746  
DATE: 12/22/2020  
SES HORIZON CONSULTING ENGINEERS, INC.  
TEXAS REGISTERED ENGINEERING FIRM F-003922

PROJECT TITLE: 2020 FORT BEND COUNTY (FBC) MOBILITY PROGRAM JOHN SHARP DRIVE FROM: SH 99 TO FM 1464		JOB NO.:
DRAWN BY:	SHEET DESCRIPTION:	FILE NAME:
CK'D BY:		FILE NO.:
SCALE:		SHT NO.:
DATE: 12/22/2020	APPROVED BY:	/56



From: nutan@associatedtesting.com

Subject: RE: FBC John Sharp Drive

Date: Jan 12, 2021 at 12:28:36 PM

To: Epi Salazar epi.salazar@seshorizon.com

Cc: Javier Infante Javier@associatedtesting.com, Robert McBride  
rmcbride@lja.com, Robert Barnett rbarnett@lja.com, Chris Jordan  
CJordan@bgeinc.com

Epi,

We completed eight borings (B-1 through B-8) and installed couple of piezometers. Our drilling team currently working on the remaining borings (B-9 through B-11). Scheduled to complete today.

Meanwhile, Borings B-1 through B-8) laboratory testing is in progress.

Please let us know if you need additional information.

Thank you,

Nutan

**From:** nutan@associatedtesting.com <nutan@associatedtesting.com>

**Sent:** Monday, December 21, 2020 8:18 AM

**To:** 'Epi Salazar' <epi.salazar@seshorizon.com>

**Cc:** 'Javier Infante' <Javier@associatedtesting.com>; 'Robert McBride (rmcbride@lja.com)' <rmcbride@lja.com>; 'Robert Barnett (rbarnett@lja.com)' <rbarnett@lja.com>; 'Chris Jordan (CJordan@bgeinc.com)' <CJordan@bgeinc.com>

**Subject:** RE: FBC John Sharp Drive

Thank you Epi!

We will proceed with our geotechnical work.

Thank you,

Nutan

**From:** Epi Salazar <epi.salazar@seshorizon.com>

**Sent:** Monday, December 21, 2020 7:54 AM

**To:** nutan@associatedtesting.com

**Cc:** 'Javier Infante' <Javier@associatedtesting.com>; Robert McBride (rmcbride@lja.com) <rmcbride@lja.com>; Robert Barnett (rbarnett@lja.com) <rbarnett@lja.com>; Chris Jordan (CJordan@bgeinc.com) <CJordan@bgeinc.com>

**Subject:** RE: FBC John Sharp Drive

No objection to your proposed boring layout.

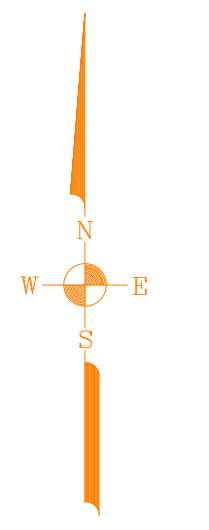
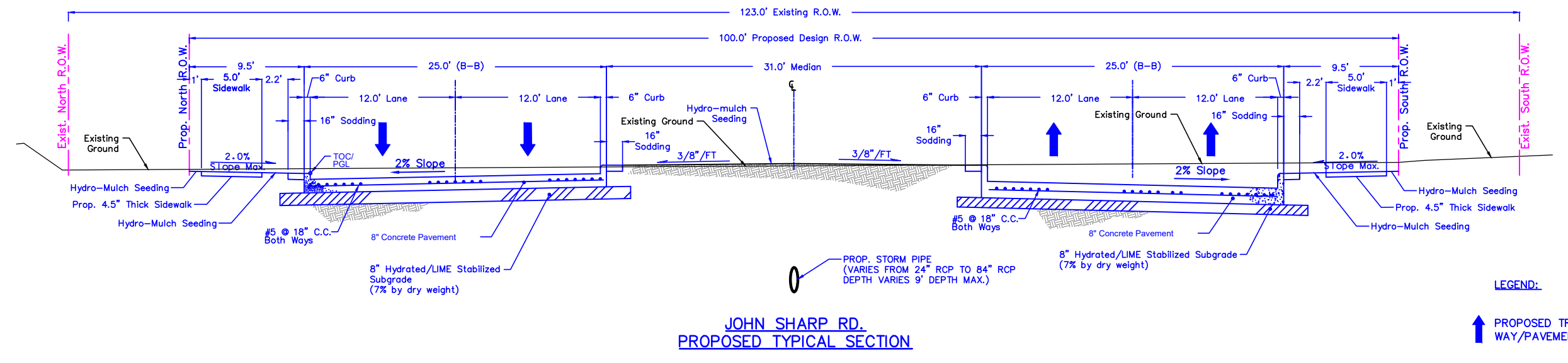
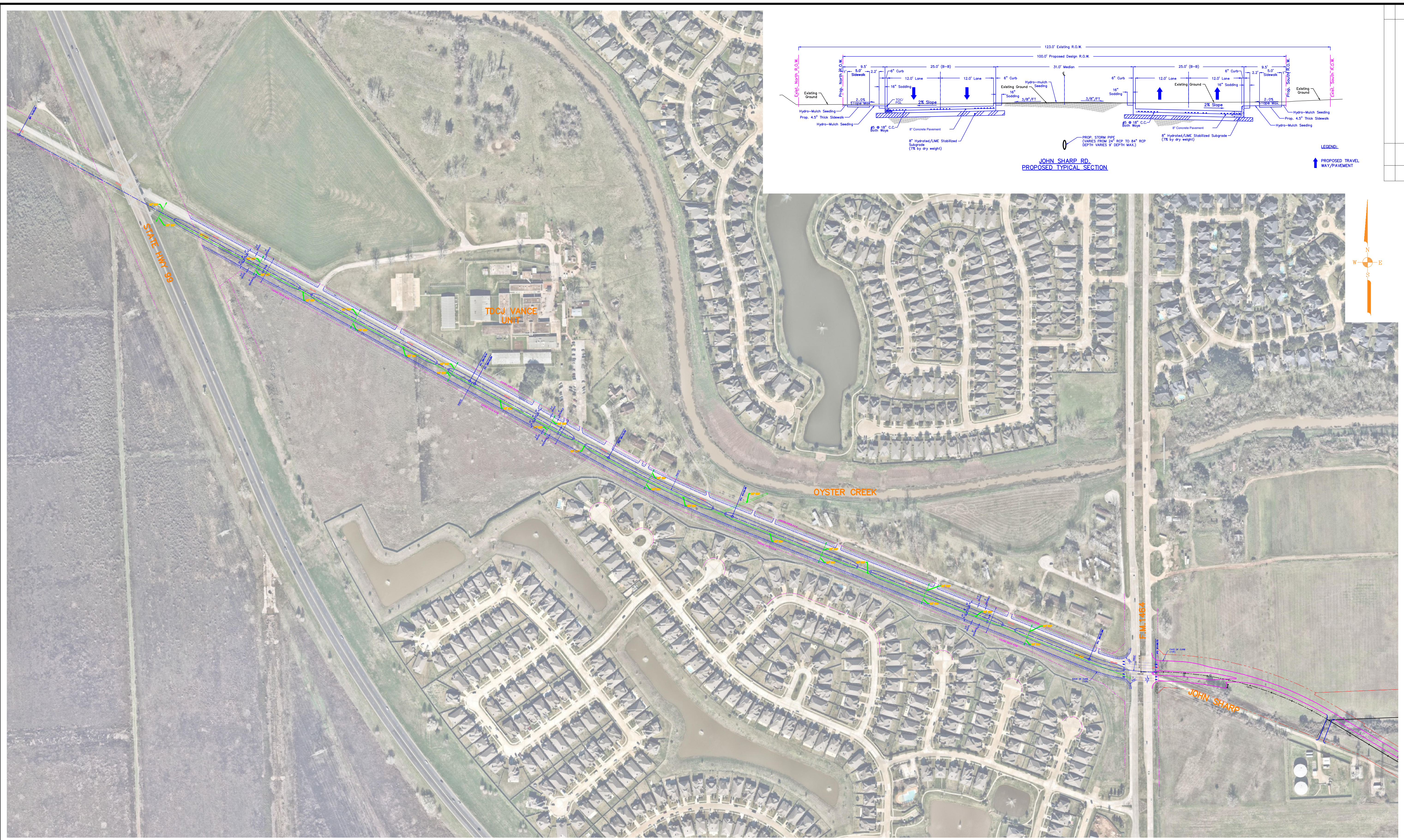
See attached.

Ok to proceed.

Call to discuss if you have questions/concerns.

Please provide dates you will be out there to inform TDCJ.

FOR REDUCED PLANS  
Original  
Scale: 1" = 200'

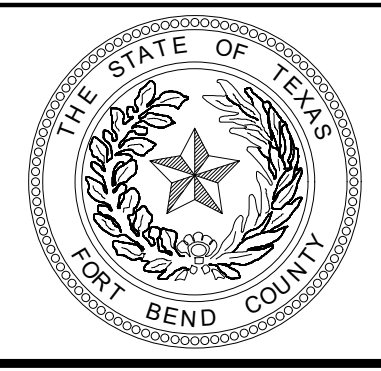


No.	Date	Revisions	APP

PLOTTED ON: 11/12/2021 9:29 AM  
FILE NAME: F:\JOHN SHARP\PER\EXHIBITS\JS-PROP. ROAD ALIGN.DWG

NO.	REVISIONS	DATE	NAME

**FORT BEND COUNTY  
ENGINEERING DEPARTMENT**



**SES HORIZON**  
CONSULTING ENGINEERS, INC.  
Civil Structural Transportation  
10101 Southwest Freeway, Suite 400 Houston, Texas 77074  
(713) 988-5504, Fax (713) 988-1441 www.seshorizon.com

SES HORIZON CONSULTING ENGINEERS, INC.  
TEXAS REGISTERED ENGINEERING FIRM F-003922

DOCUMENT IS FOR INTERIM REVIEW AND NOT INTENDED FOR CONSTRUCTION, BIDDING, OR PERMIT PURPOSES.  
OMAR J. CORREDOR P.E.  
TEXAS SERIAL NO. 47748  
DATE: 01/12/2021  
SES HORIZON CONSULTING ENGINEERS, INC.  
TEXAS REGISTERED ENGINEERING FIRM F-003922

PROJECT NO:	2020 FORT BEND COUNTY (FBC) MOBILITY PROGRAM JOHN SHARP DRIVE FROM: SH 99 TO FM 1464		JOB NO:
DRAWN BY:	OVERALL PROJECT ALIGNMENT LAYOUT		FILE NAME:
CVD BY:			FILE NO:
SCALE:	1" = 200'	APPROVED BY:	SHT NO:
DATE:	01/12/2021		1 of 1