



Fort Bend County Engineering
FORT BEND COUNTY, TEXAS

J. Stacy Slawinski, P.E.
County Engineer

February 21, 2020

Judge KP George
Fort Bend County Judge
301 Jackson Street
Richmond, Texas 77469

RE: Major Thoroughfare Plan modifications of within the Pearland and Arcola Extra-Territorial Jurisdictions

Dear Judge George:

Fort Bend County Engineering respectfully requests modifications to the Fort Bend County Major Thoroughfare Plan (MTP). Coordination between Fort Bend County, and the Cities of Pearland and Arcola have occurred and all parties agree to the requested modifications. The requested modifications are as follows:

Exhibit A

- Ladonia Road – downgrade from Collector to Local
- Post Road – realign thoroughfare to match adopted Arcola MTP
- Unnamed Collector – remove from Brazoria County Line to extension of Mistletoe Lane Collector
- Mistletoe Lane – remove collector from Broadmore Drive to Ladonia Road

Exhibit B

- First Street – realign proposed Collector to align with Third Street

A copy of the maps are attached for your review. The public hearing date for acceptance of the change is being scheduled. If you should have any questions, please give me a call 281-633-7515.

Sincerely,

A handwritten signature in cursive script, appearing to read "Maggie Dalton", followed by a stylized flourish.

Maggie Dalton
Development Services Manager

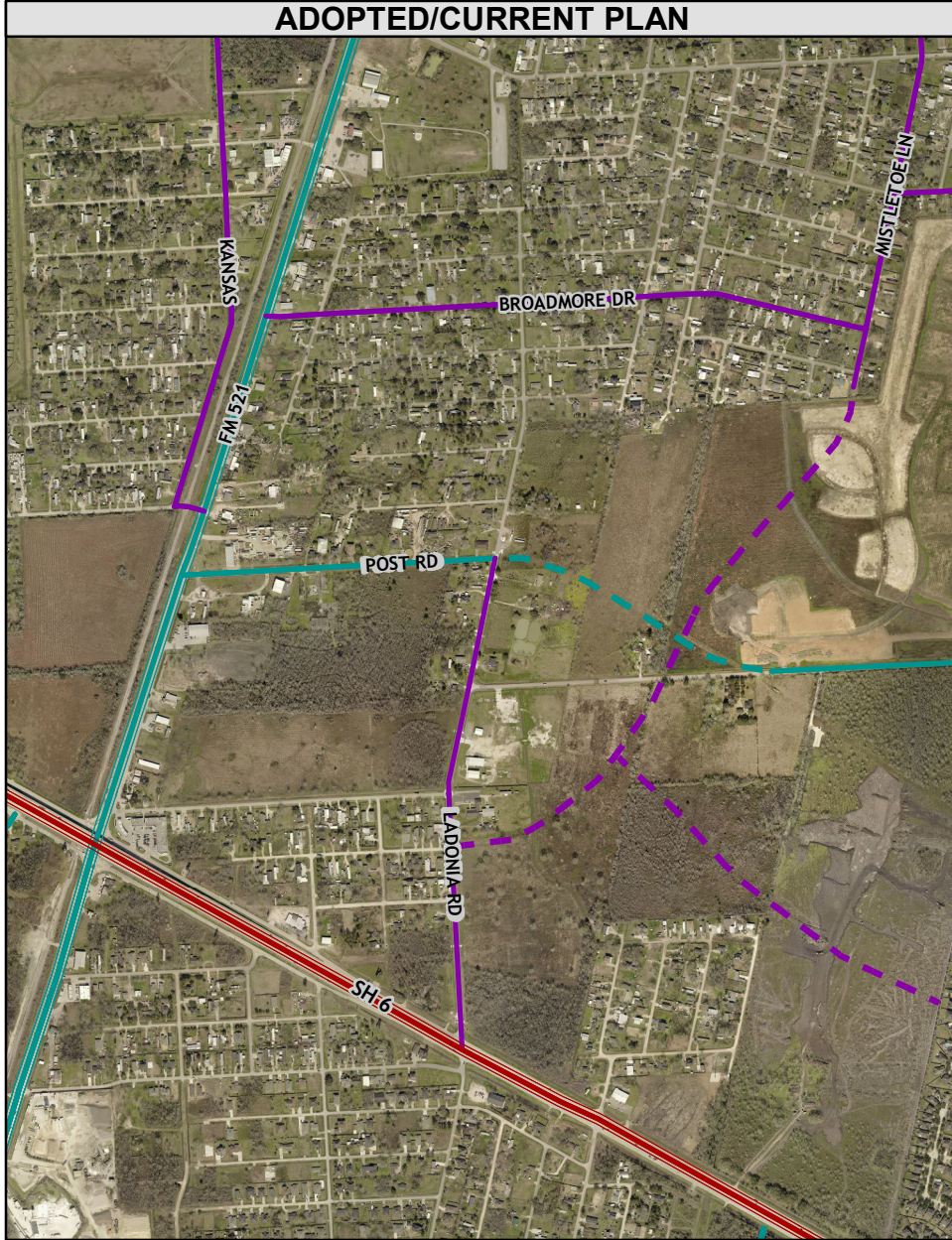
MD/mjs

cc: Commissioner Vincent M. Morales, Jr., Pct. 1
Commissioner Grady Prestage, Pct. 2
Commissioner W. A. Andy Meyers, Pct. 3
Commissioner Ken DeMerchant, Pct. 4
Mr. J. Stacy Slawinski, P.E., County Engineer
File

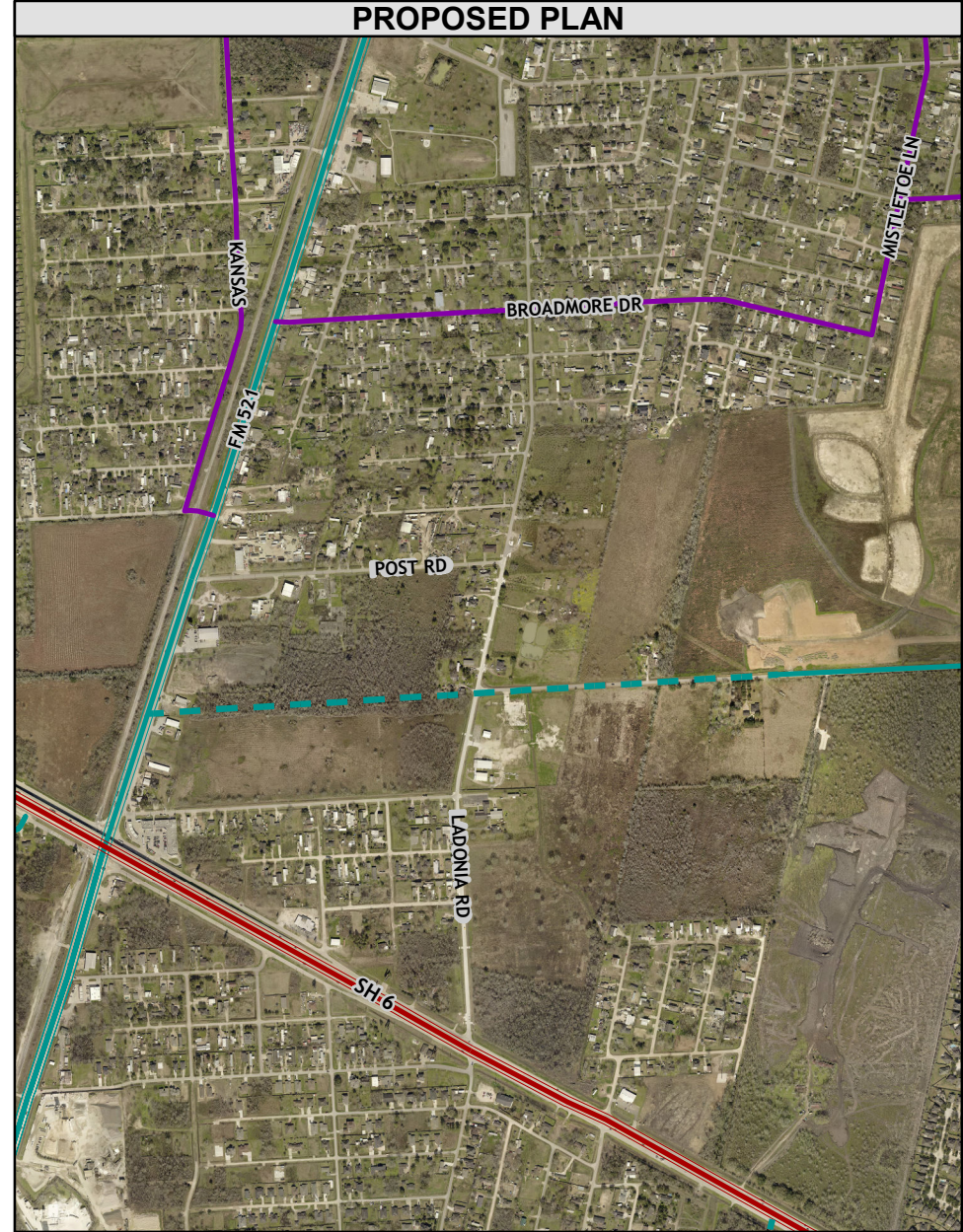
301 Jackson St., Suite 401 | Richmond, TX 77469
Phone 281-633-7500

Arcola City Limits and Pearland ETJ Road Reconfigurations

ADOPTED/CURRENT PLAN



PROPOSED PLAN



Legend

- Proposed Reconfiguration: Major Thoroughfare
- Adopted 2015 MTP: City/County Collector
- Adopted 2015 MTP: Major Thoroughfare
- Adopted 2015 MTP: State Major Thoroughfare
- Adopted 2015 MTP: State Principal Thoroughfare

0 500 1,000 1,500 Feet



Disclaimer

This Geographic Information Systems (GIS) Data is a public resource of general information. The information contained was generated from GIS data maintained by Fort Bend County and different sources and agencies. The County of Fort Bend makes no warranty, representation, or guarantee as to the content, sequence, accuracy, timeliness, or completeness of any of the spatial data or database information provided herein. The County of Fort Bend shall assume no liability for any errors, omissions, or inaccuracies in the information provided, regardless of how caused; or any decision made or action taken or not taken by any person relying on any information or data furnished within. If any errors are detected, please contact the GIS Division of Fort Bend County Engineering so they may be corrected.

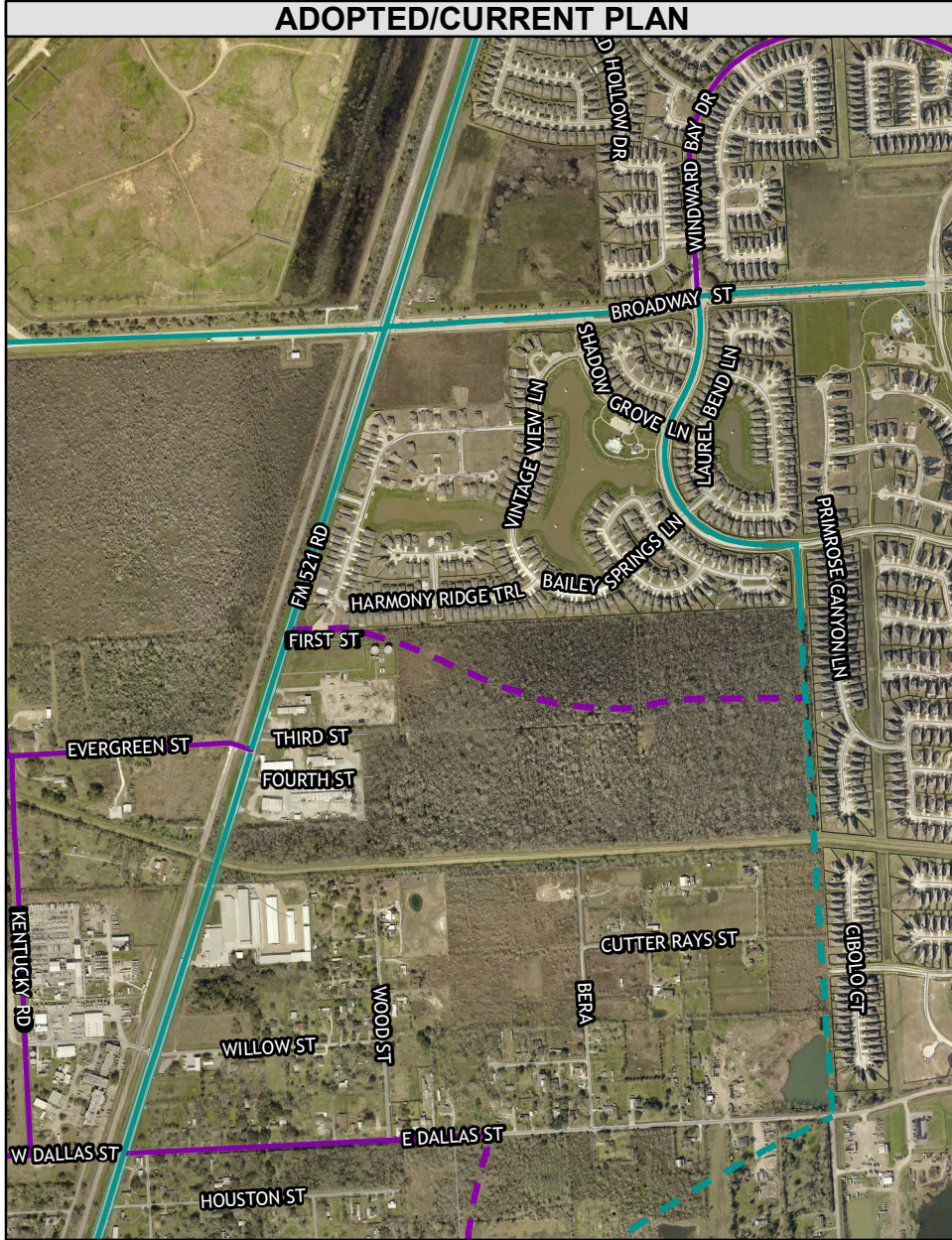


2015 Major Thoroughfare Plan - Proposed Revision

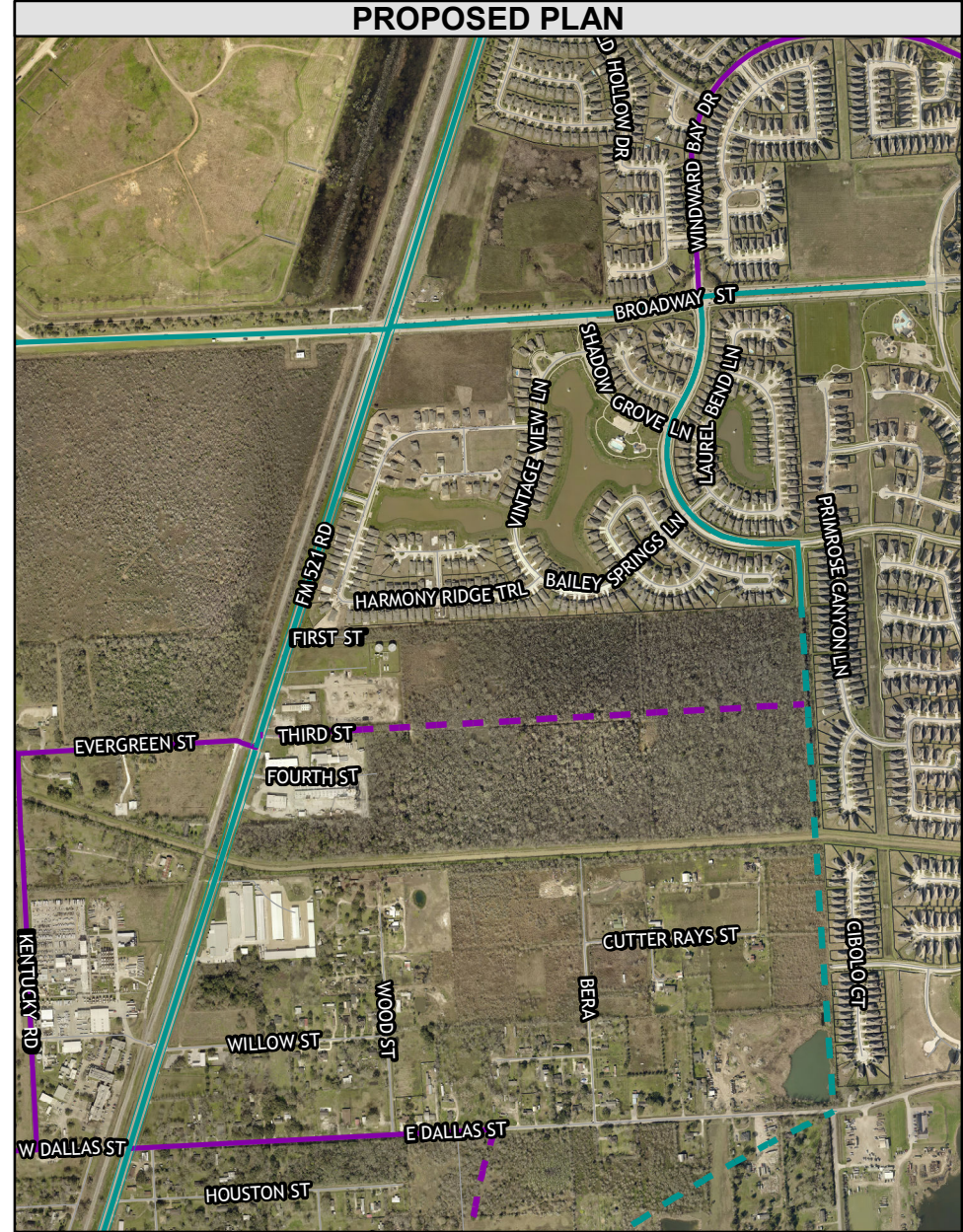
Map By:
Engineering GIS
February 2020

Arcola City Limits Road Reconfigurations

ADOPTED/CURRENT PLAN



PROPOSED PLAN



Legend

- Proposed Reconfiguration:Collector
- Adopted 2015 MTP: Proposed Major Thoroughfare
- Adopted 2015 MTP: City/County Collector
- Adopted 2015 MTP: Major Thoroughfare
- Adopted 2015 MTP: State Major Thoroughfare

0 500 1,000 1,500 Feet



Disclaimer

This Geographic Information Systems (GIS) Data is a public resource of general information. The information contained was generated from GIS data maintained by Fort Bend County and different sources and agencies. The County of Fort Bend makes no warranty, representation, or guarantee as to the content, sequence, accuracy, timeliness, or completeness of any of the spatial data or database information provided herein. The County of Fort Bend shall assume no liability for any errors, omissions, or inaccuracies in the information provided, regardless of how caused; or any decision made or action taken or not taken by any person relying on any information or data furnished within. If any errors are detected, please contact the GIS Division of Fort Bend County Engineering so they may be corrected.



2015 Major Thoroughfare Plan - Proposed Revision

Map By:
Engineering GIS
January 2020