

THE STATE OF TEXAS           §  
                                                  §  
COUNTY OF FORT BEND       §

ORDER OF EXCLUSION AND DISANNEXATION

RECITALS

WHEREAS, certain tracts of land identified in Exhibit A, attached hereto and incorporated herein for all purposes and hereinafter referred to as the “De-Annexed Areas” were included within the boundaries of Fort Bend County Assistance District No. 20 (“CAD No. 20”) by error, and never intended to be included within the original boundaries of the District; and

WHEREAS, the Board of Directors of CAD No. 20 desires to exclude the De-Annexed Areas so as to be situated outside of the boundaries of CAD No. 20 and not included within the boundaries of CAD No. 20; and

WHEREAS, Section 387.003(j) of the Texas Local Government Code permits a commissioners court by order, to exclude an area from the district if the district has no outstanding bonds payable wholly or partly from sales and use taxes and the exclusion of the land does not impair any outstanding district debt or contractual obligation; and

WHEREAS, the Board of Directors of CAD No. 20 finds that there are no outstanding bonds payable wholly or partly from sales and use taxes, and the exclusion of the De-Annexed Areas does not impair any outstanding CAD No. 20 debt or contractual obligation; and

WHEREAS, the Board of Directors of CAD No. 20 finds that there are no outstanding bonds payable wholly or partly from sales and use taxes and the exclusion of the Property does not impair any outstanding CAD No. 20 debt or contractual obligation; and

BE IT ORDERED BY THE COMMISSIONERS COURT SITTING AS THE BOARD OF DIRECTORS OF CAD NO. 20 THAT:

Section 1:     The matters and facts set out in the preamble of this order are hereby found and declared to be true and complete and are incorporated herein.

Section 2:     The Property is hereby excluded from the boundaries of CAD No. 20 by disannexation.

Section 3: This Order is effective immediately upon passage.

ADOPTED this \_\_\_\_\_ day of \_\_\_\_\_, 2019.

**FORT BEND COUNTY ASSISTANCE  
DISTRICT NO. 20**

By: \_\_\_\_\_  
KP George, County Judge

Date: \_\_\_\_\_

ATTEST:

By: \_\_\_\_\_  
Laura Richard, County Clerk

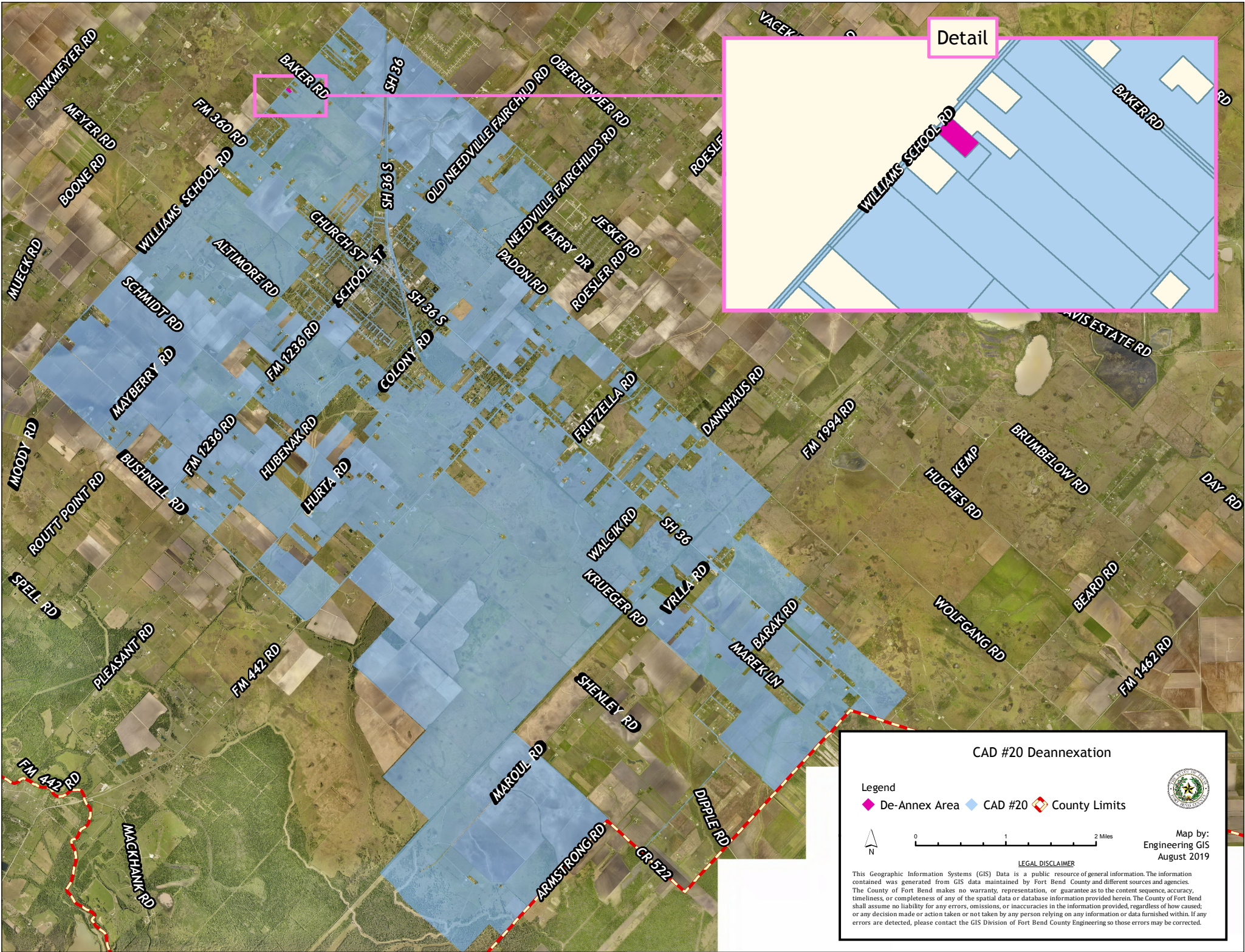
THE STATE OF TEXAS           §  
                                                  §  
COUNTY OF FORT BEND       §

This instrument was acknowledged before me on \_\_\_\_\_, 2019, KP George,  
County Judge of Fort Bend County, Texas.

\_\_\_\_\_  
Notary Public, State of Texas

(NOTARY SEAL)

# EXHIBIT A



Detail

### CAD #20 Deannexation

**Legend**

- ◆ De-Annex Area
- ◆ CAD #20
- County Limits

LEGAL DISCLAIMER

This Geographic Information Systems (GIS) Data is a public resource of general information. The information contained was generated from GIS data maintained by Fort Bend County and different sources and agencies. The County of Fort Bend makes no warranty, representation, or guarantee as to the content, sequence, accuracy, timeliness, or completeness of any of the spatial data or database information provided herein. The County of Fort Bend shall assume no liability for any errors, omissions, or inaccuracies in the information provided, regardless of how caused, or any decision made or action taken or not taken by any person relying on any information or data furnished within. If any errors are detected, please contact the GIS Division of Fort Bend County Engineering so those errors may be corrected.

Map by:  
Engineering GIS  
August 2019