



Fort Bend County Engineering  
FORT BEND COUNTY, TEXAS

J. Stacy Slawinski, P.E.  
County Engineer

July 11, 2019

Commissioner W. A. "Andy" Meyers  
Fort Bend County Precinct 3  
22333 Grand Corner Drive  
Katy, Texas 77494

**RE: Grand Mission Boulevard – Between Long Point Creek and Harlem Road, “SPEED  
LIMIT 35”**

Dear Commissioner:

Fort Bend County Engineering Department has completed the traffic control plan to place a speed limit of 35 miles per hour on Grand Mission Boulevard between Long Point Creek and Harlem Road as shown on the traffic control plan. Currently, the speed limit on Grand Mission Boulevard is 35 miles per hour north of Long Point Creek and 45 miles per hour south of Long Point Creek. The proposed change will make Harlem Road the new breakpoint in the speed limit.

The new 35 miles per hour section includes the school zone for Juan Seguin Elementary School. The new speed limit during school zone hours on Grand Mission will be 20 miles per hour rather than its current 30 miles per hour. The public hearing date for acceptance for the plan will be scheduled on the next available Commissioner's Court Agenda.

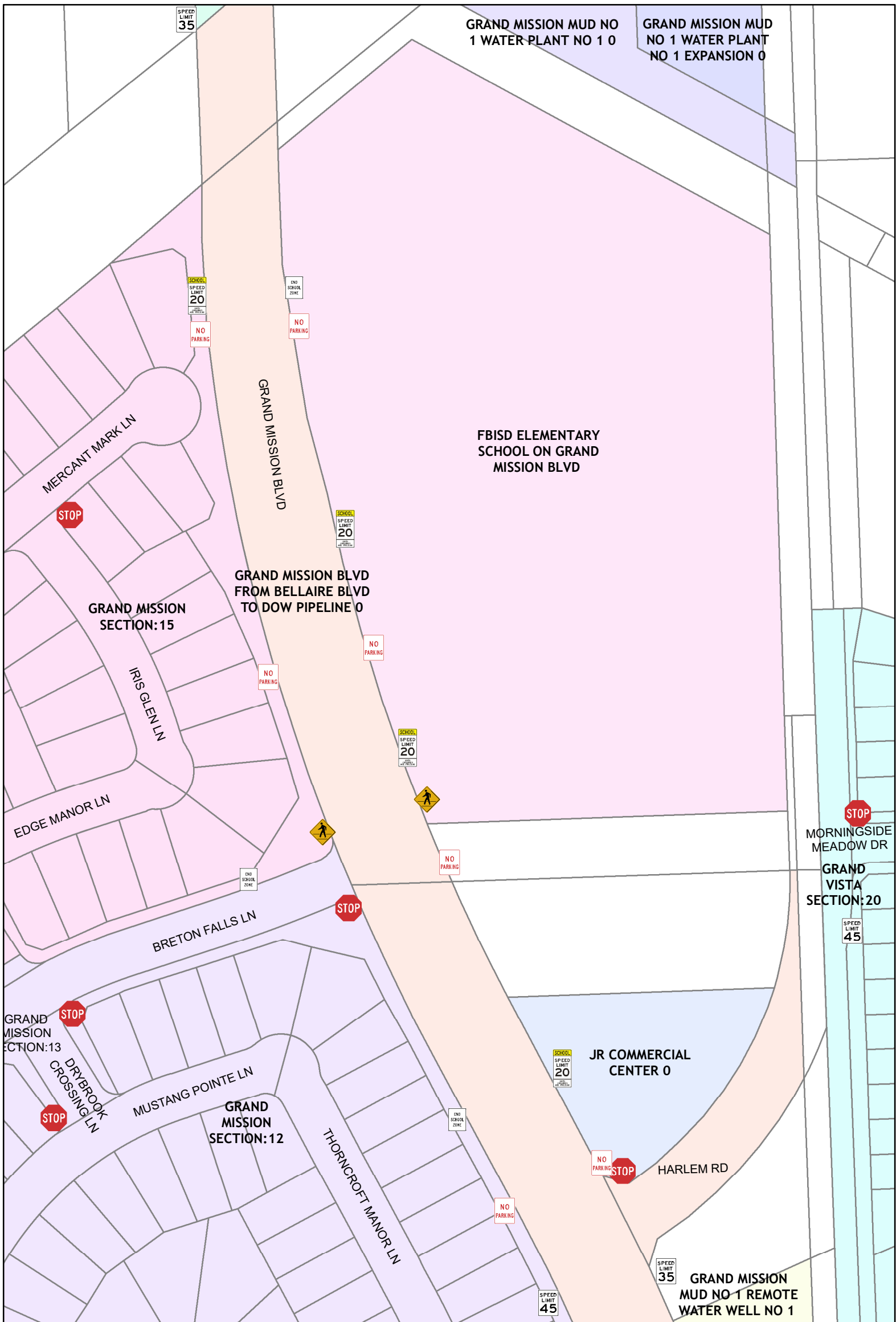
A copy of the traffic control plan is attached for your review. If we can be of further assistance please do not hesitate to contact me at 281-633-7528 or [chris.debaillon@fortbendcountytexas.gov](mailto:chris.debaillon@fortbendcountytexas.gov).

Sincerely,

Chris Debaillon, PE, PTOE  
Assistant County Engineer - Traffic

cc: Judge KP George, County Judge  
Marc Grant - FBC Road & Bridge  
Brian Fields - Signage Department  
Maj. Chad Norvell – FBC Sherriff's Office  
File

301 Jackson St., Suite 401, Richmond, TX 77469  
Phone 281-633-7500



**Grand Mission Blvd.  
(Revised)**

**Sign Legend**



Plan by: Engineering GIS  
Date: 7/12/2019

Plan Approved by: Chris Debaillon, PE PTOE  
Date:



End School Zone



Speed Limit 45 mph



School Zone



Cross Only at Crosswalks



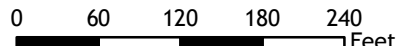
No Parking arrow



Speed Limit 35 mph



Stop



**Notes:**  
The purpose of this traffic control plan is to revise the speed limit from 45 mph to 35 mph for a portion of Grand Mission Blvd. as indicated on the drawing.