



Fort Bend County Engineering
FORT BEND COUNTY, TEXAS

J. Stacy Slawinski, P.E.
County Engineer

July 2, 2019

Commissioner W. A. "Andy" Meyers
Fort Bend County Precinct 3
22333 Grand Corner Drive
Katy, Texas 77494

**RE: Temporary Road Closure – Lakes of Bella Terra Subdivision, FBC MUD No. 133,
Pavement Repairs at Bellagio Drive from Torino Reale Drive to Via Fiore Drive,
Permit #2019-29022**

Dear Commissioner:

We are requesting temporary road closure of Bellagio Drive from Torino Reale Drive to Via Fiore Drive, within the Lakes of Bella Terra Subdivision during construction, pursuant to Section 251.011 of the Texas Transportation Code. The request for temporary road closure dates are July 24, 2019 to August 21, 2019, pending weather. This is for FBC MUD No. 133 pavement repairs.

The request will be placed on the July 23, 2019 Commissioners Court agenda. The detour and traffic control plan is attached. Advance warning signage will be posted prior to the road closure.

Should you have any questions please do not hesitate to call me at 281-633-7515.

Sincerely,

Maggie Dalton
Development Services Manager

Attachment: Detour map

cc: Mr. William Saour, P.E., Benchmark Engineering Corp., wsaour@benchmarkengr.net
Mr. John Abad, Benchmark Engineering Corp., jabad@benchmarkengr.net
Mr. Wesley Crawford, FBC Engineering
Mr. Brian Fields, FBC Road & Bridge
Mr. Jose Ramirez, FBC Permit Coordinator
File

301 Jackson St., Suite 401, Richmond, TX 77469
Phone 281-633-7500



BENCHMARK ENGINEERING CORPORATION
ENGINEERING • PLANNING • LAND SURVEYING

TEXAS BOARD OF PROFESSIONAL ENGINEERS
REGISTRATION NUMBER F-6788
TEXAS BOARD OF PROFESSIONAL LAND SURVEYORS
REGISTRATION NUMBER 10009000
2401 FOUNTAINVIEW DRIVE, SUITE 500
HOUSTON, TEXAS 77057
(713) 266-9930

CONSULTING ENGINEERS

FAX (713) 266-3804

July 1, 2019

Mr. Andy Meyers
22333 Grand Corner Drive
Katy, TX 77494

Re: Road Closure at Bellagio Drive for Pavement Repair

Dear Mr. Meyers:

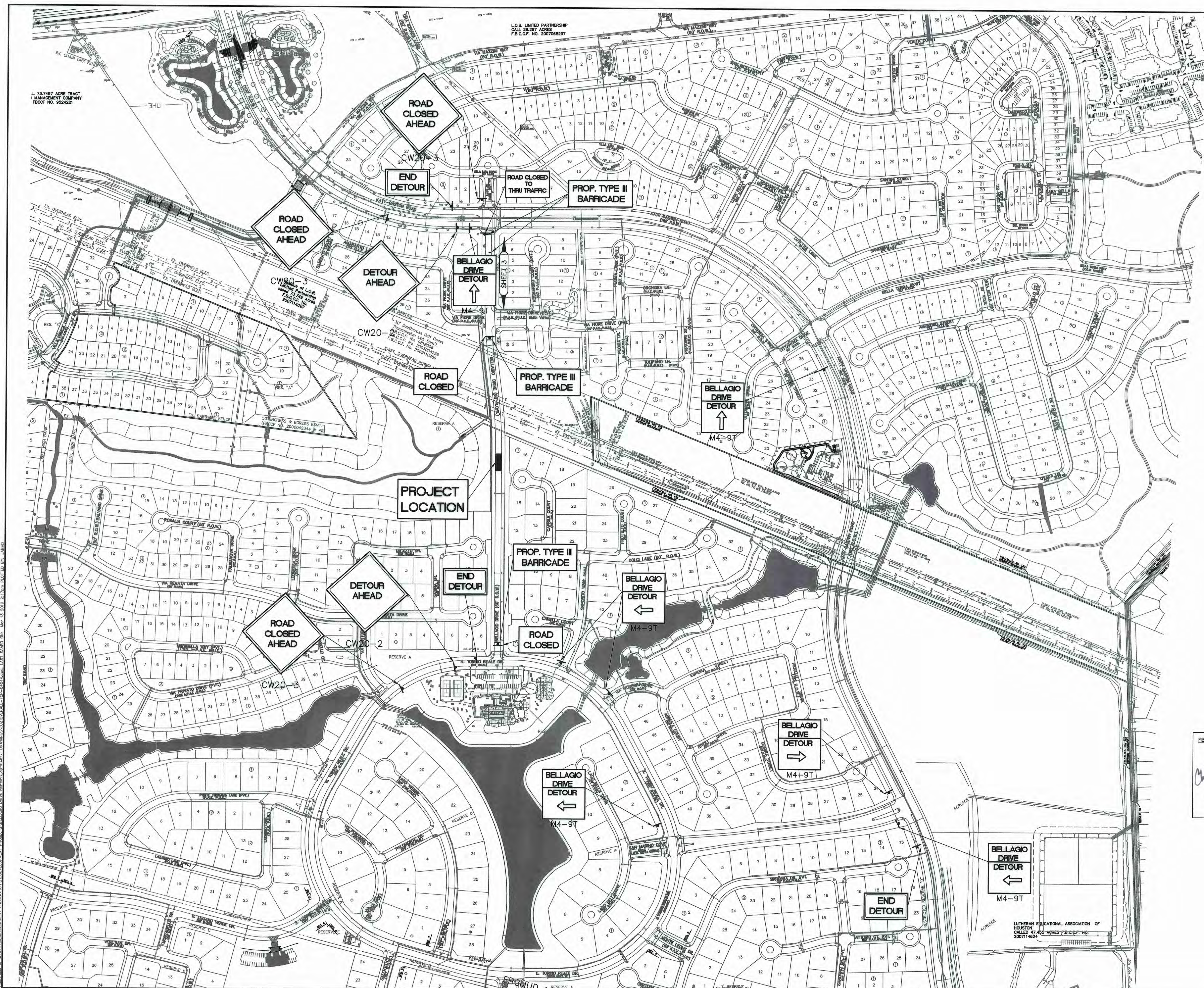
This is to request a road closure for pavement repair along Bellagio Drive from Torino Reale Drive to Via Fiore Drive in Fort Bend County. The road closure will be for a maximum of 20-25 days. Attached to this letter are the approved construction plans including the Traffic Control Plan (Sheet 2 of 5).

Please let me know if you have any questions.

Very truly yours,

BENCHMARK ENGINEERING CORPORATION

Fadwa Behnam, P.Eng., M.Eng.
Project Engineer



L. 73,7487 ACRES TRACT
MANAGEMENT COMPANY
FBOC NO. 9524221

L.O.B. LIMITED PARTNERSHIP
CALL 28.267 ACRES
F.B.C.F. NO. 200708287

BENCHMARKS (L806)

LOCATED 5.68 M. N. FROM ROSENBERG, 0.25 M. WEST ALONG THE ATCHISON, TOPEKA AND SANTA FE RAILWAY FROM THE STATION AT ROSENBERG, THENCE 4.95 M. N. ALONG FARM ROAD 358 AT THE CROSSING OF A TRANSMISSION TOWER AND POWER LINES 50 FEET S.W. OF THE CENTER LINE OF THE ROAD, 62 FEET N.E. OF THE EAST LEG OF THE FIRST TRANSMISSION TOWER S.W. OF THE ROAD 40-1/2 FEET S.E. OF THE S.E. CORNER OF THE METAL GATE, 2-1/2 FEET N.W. OF A T-JUNCTION POLE POST, 2 1/2 FEET S.W. OF POWER POLE, 0.6 FOOT SOUTHWEST OF THE FENCE, 1 FOOT S.W. OF A WIRELESS POST, ABOVE GROUND, WITH THE ROAD, AND SET IN THE TOP OF A CONCRETE POST PROJECTING 0.3 FEET ABOVE GROUND, NAD 29, 1973 ADJUSTMENT.

1923 ELEV. ADJUST.	2001 ELEV. ADJUST.	ELEV. DEF.
94.81'	94.81'	-0.84'
T.B.M. #1 8" SPIKE VERTICALLY IN ROOT, SOUTH SIDE 324" OAK TREE, 15' WEST OF CENTER LINE DIRT ROAD 3172' SOUTHWEST OF G-22.		
1923 ELEV. ADJUST.	2001 ELEV. ADJUST.	ELEV. DEF.
115.43'	115.43'	-0.34'
T.B.M. #2 2" x 4" IN EXPLANADE NOSE, GASTON ROAD AT ENTRANCE TO SEVEN MEADOWS SUBDIVISION.		
1923 ELEV. ADJUST.	2001 ELEV. ADJUST.	ELEV. DEF.
113.39'	113.39'	-0.34'
T.B.M. #3 RAILROAD SPIKE IN NORTH POLE OF TWIN POWER POLES SOUTH OF DRILL SITE AS 4TH SET OF POLES WEST OF EAST PROPERTY LINE IN HILAP FEE STRIP, SOUTHWEST OF G-11.		
1923 ELEV. ADJUST.	2001 ELEV. ADJUST.	ELEV. DEF.
118.40'	118.40'	-0.84'
NOTE: PROJECT ELEVATIONS ARE BASED ON 1973 ADJUSTMENT.		

FLOOD NOTE:
ACCORDING TO THE FEDERAL EMERGENCY MANAGEMENT AGENCY FLOOD INSURANCE RATE MAP NO. 48152D0101C, FOR FORT BEND COUNTY, TEXAS AND INCORPORATED AREAS, REVISED DATE APRIL 2, 2014, THE SUBJECT PROPERTIES LIES IN ZONE X (UNSHADED). AREAS DETERMINED TO BE OUTSIDE THE 500-YEAR FLOOD PLAN.

100-YEAR BASE FLOOD ELEVATION ELEVATION 94.00

TYPICAL TRANSITION LENGTHS AND SUGGESTED MAXIMUM SPACING OF DEVICES

Posted Speed or 85th Speed (MPH)	Transition Length (ft)	Minimum Spacing (ft)	Typical Spacing (ft)	Suggested Maximum Spacing (ft)
30	150'	150'	150'	300'
35	150'	150'	150'	300'
40	200'	200'	200'	400'
45	250'	250'	250'	500'
50	300'	300'	300'	600'
55	350'	350'	350'	700'
60	400'	400'	400'	800'
65	450'	450'	450'	900'
70	500'	500'	500'	1000'

* 85th Percentile Speed may be used on roads where traffic speeds normally exceed the posted speed limit.
* Typical lengths have been rounded off.

- ### NOTES
- ALL ADVANCED WARNING SIGNS TO BE SET PRIOR TO START OF CONSTRUCTION ACTIVITIES AND TO REMAIN IN PLACE UNTIL ALL CONSTRUCTION ACTIVITIES ARE COMPLETE AND ACCEPTED BY FORT BEND COUNTY. THE CONTRACTOR WILL COORDINATE WITH THE FORT BEND COUNTY PUBLIC INFRASTRUCTURE DEPARTMENT, ENGINEERING DIVISION IN ESTABLISHING TRAFFIC ROUTES AND LOCATION OF SIGNS.
 - LANE CLOSURES SHALL BE DURING PEAK HOURS ONLY MON-FRI 5:30 AM-3:00 PM (NORTH & SOUTH BOUND).
 - ALL SIGNS MARKED (V) SHALL HAVE WARNING FLAGS MOUNTED ON TOP OF THE SIGN.
 - MAX. PAVEMENT DROP-OFF SHALL NOT EXCEED 2".
 - POLICE SHALL BE NEEDED TO CONTROL TRAFFIC AT ALL MAJOR INTERSECTIONS.
 - ALL FLAGGERS SHALL BE IN RADIO CONTACT WITH EACH OTHER AT ALL TIMES.
 - ALL PAVEMENT MARKINGS COVERED BY OVERLAY SHALL BE REPLACED BEFORE OPENING TO TRAFFIC.
 - ADVANCED WARNING SIGNS SHALL BE PLACED A MINIMUM OF 700 FEET IN ADVANCE TO BEGINNING OF OVERLAY. CONTRACTOR SHALL NOTIFY THE FORT BEND COUNTY ENGINEERING DEPARTMENT AT LEAST TWO WEEKS PRIOR TO ANY CONSTRUCTION.
 - ALL PORTABLE SIGNING, DRUMS AND CONES SHALL BE REMOVED BY THE END OF EACH DAY.
 - AS OVERLAY IS COMPLETED ALL DEMARLICATION SHALL BE MOVED ON TO LANE LINES TO OPEN CENTER LEFT TURN LANE TO TRAFFIC.
 - IF WORK ZONE IS NEEDED OVERNIGHT ALL CONES OR TUBULAR MARKERS SHALL BE REPLACED WITH DRUMS W/MS AND TEMPORARY PAVEMENT MARKINGS SHALL BE IN PLACE FOR NIGHTTIME OPERATION AS DIRECTED BY THE ENGINEER.
 - CONSTRUCTION SHALL BE IN PLACE FOR NIGHTTIME OPERATION AS DIRECTED BY THE ENGINEER.
 - ACCESS TO EXISTING BUSINESSES OR RESIDENCES SHALL BE MAINTAINED AT ALL TIMES.

EXISTING POSTED SPEED LIMIT = 35 M.P.H.
CONSTRUCTION ZONE DESIGN SPEED LIMIT = 35 M.P.H.

FBC ENGINEERING APPROVAL
Chad Condit
3/21/19



TEXAS BOARD OF PROFESSIONAL ENGINEERS
BENCHMARK ENGINEERING CORPORATION
REGISTRATION NUMBER F-6788

Benchmark Engineering Corporation
Consulting Engineers - Planners - Surveyors
2401 Fountainview Suite 500
Houston, Texas 77057 USA (713) 266-9930
TBPE Firm Registration No. F-6788
TBPLS Firm Registration Certificate No. 10009000

F.B.C.M.U.D. No. 133
PLANS FOR PAVEMENT REPAIR ALONG BELLAGIO DRIVE TO SERVE LAKES OF BELLA TERRA

PROPOSED
OVERALL TRAFFIC CONTROL LAYOUT

DRAWN BY: BEC DATE: DEC. 2018 SCALE: 1"=200'
CHECKED BY: BEC JOB No. 04044-BDR SHEET No. 2 OF 5

LUTHERAN EDUCATIONAL ASSOCIATION OF HOUSTON
CALLED 47.453 ACRES F.B.C.F. NO. 200714824

B.E.C. PROJECT No.: 04044-BL60-R
LOBT-BELLAGIO DRIVE REPAIR