

**PLAT RECORDING SHEET**

**PLAT NAME:** Kingdom Heights, Section Five

**PLAT NO:** \_\_\_\_\_

**ACREAGE:** 18.6677

**LEAGUE:** William Andrews League

**ABSTRACT NUMBER:** 3

**NUMBER OF BLOCKS:** 7

**NUMBER OF LOTS:** 78

**NUMBER OF RESERVES:** 5

**OWNERS:** 572-Three, Ltd., a Texas Limited Partnership

\_\_\_\_\_  
**(DEPUTY CLERK)**



DRAWING INFO: Z:\yob\164-127\yob\164-127\_P1\_S2.dwg, JLN, 16, 2019, 10:10 AM

RESERVE "T"  
KINGDOM HEIGHTS  
SECTION ONE  
(PLAT NO. 20060032; F.B.C.P.R.)

RESERVE "C"

FORT BEND COUNTY LEVEE IMPROVEMENT DISTRICT NO. 20  
LEVEE TRACT NO. 1  
(F.B.C.C.F. NO. 2011056373)

X = 2,982,573.37  
Y = 13,782,270.77

X = 2,982,509.87  
Y = 13,781,750.01

RESERVE "T"  
KINGDOM HEIGHTS  
SECTION ONE  
(PLAT NO. 20060032; F.B.C.P.R.)

PATRICIA CROSSING  
(60' R.O.W.)  
(PLAT NO. 20170108; F.B.C.P.R.)

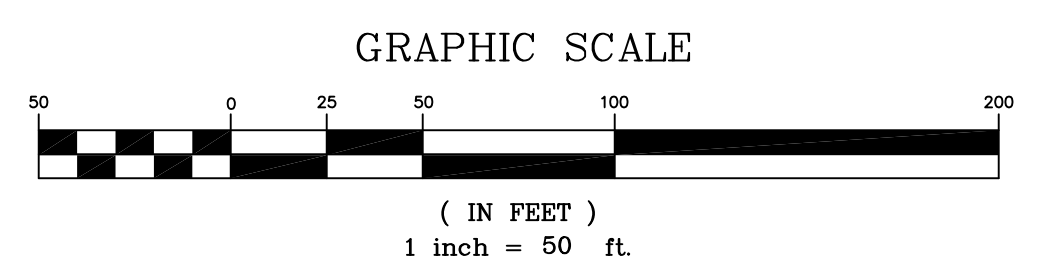
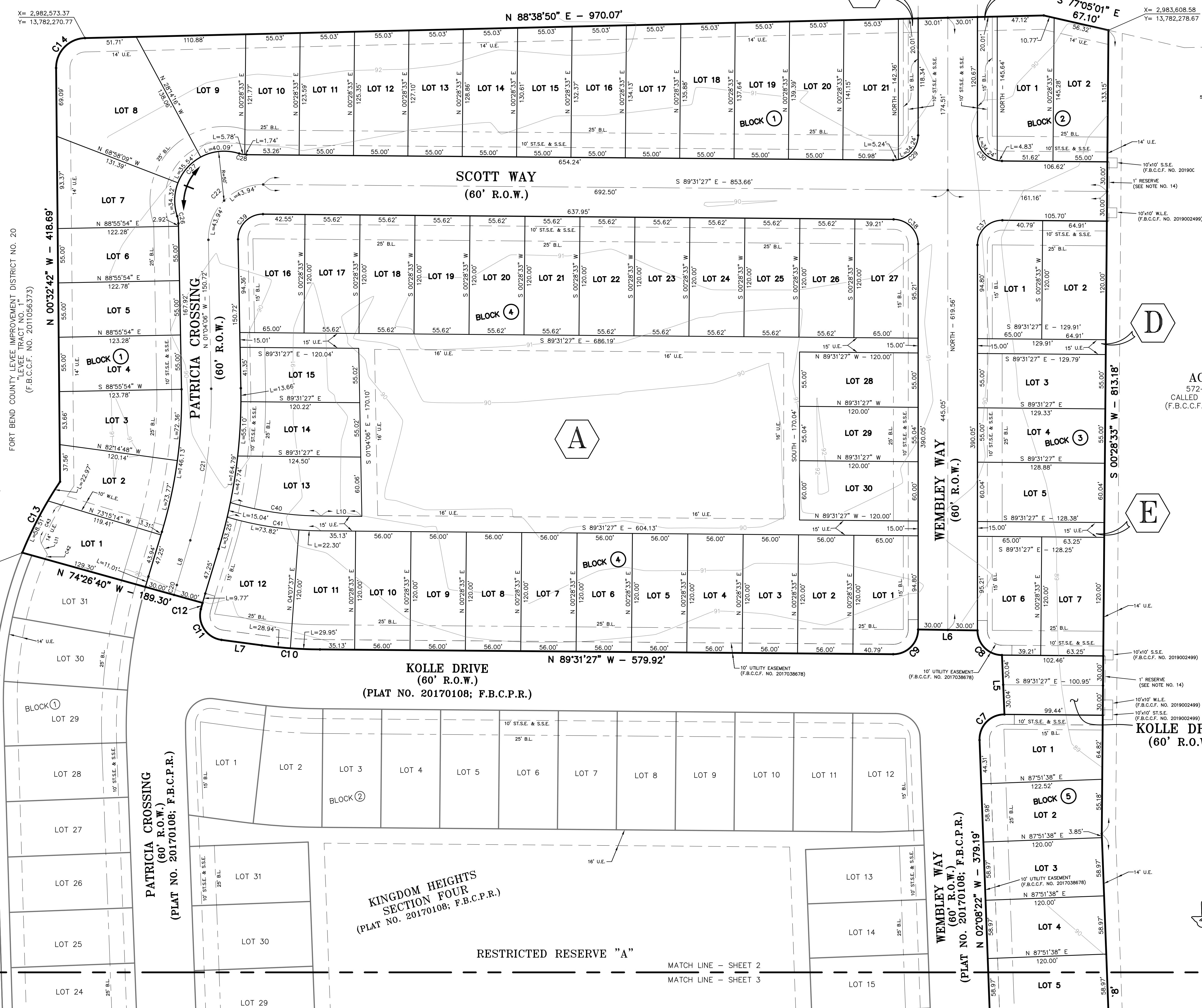
KINGDOM HEIGHTS  
SECTION FOUR  
(PLAT NO. 20170108; F.B.C.P.R.)

RESTRICTED RESERVE "A"

FORT BEND COUNTY LEVEE IMPROVEMENT DISTRICT NO. 20  
LEVEE TRACT NO. 1  
(F.B.C.C.F. NO. 2011056373)

EXTENSION OF WEMBLEY WAY ACROSS  
LEVEE TRACT WILL BE DEDICATED IN FUTURE  
BY SEPARATE INSTRUMENT

WILLIAM ANDREWS LEAGUE  
ABSTRACT NO. 3



- LEGEND**
- B.L. - BUILDING LINE
  - F.B.C. - FORT BEND COUNTY
  - F.B.C.C.F. - FORT BEND COUNTY CLERK'S FILE
  - F.B.C.D.R. - FORT BEND COUNTY DEED RECORDS
  - F.B.C.P.R. - FORT BEND COUNTY PLAT RECORDS
  - FND - FOUND
  - IP - IRON PIPE
  - IR - IRON ROD
  - R.O.W. - RIGHT OF WAY
  - S.S.E. - SANITARY SEWER EASEMENT
  - S.F. - SQUARE FEET
  - S.S.E. - SANITARY SEWER EASEMENT
  - S.T.S.E. - STORM SEWER EASEMENT
  - U.E. - UTILITY EASEMENT
  - W.L.E. - WATER LINE EASEMENT
  - WTH - WITH

ACREAGE  
572-THREE, LTD.  
CALLED 572.3578 ACRES  
(F.B.C.C.F. NO. 2001016412)

RESTRICTED RESERVE TABLE		
A	2.2110 ACRES	(96,313 SQ. FT.)
B	0.0626 ACRE	(2,729 SQ. FT.)
C	0.0639 ACRE	(2,785 SQ. FT.)
D	0.0447 ACRE	(1,948 SQ. FT.)
E	0.0442 ACRE	(1,925 SQ. FT.)

NOTE: ALL RESERVES ARE RESTRICTED TO LANDSCAPE / RECREATION / OPEN SPACE

# FINAL PLAT OF KINGDOM HEIGHTS SECTION FIVE

78 LOTS - 7 BLOCKS - 5 RESERVES

A SUBDIVISION OF 18.6677 ACRES OF LAND  
IN THE WILLIAM ANDREWS LEAGUE,  
ABSTRACT NO. 3, FORT BEND COUNTY, TEXAS

~ OWNERS ~  
**572-THREE, LTD.**

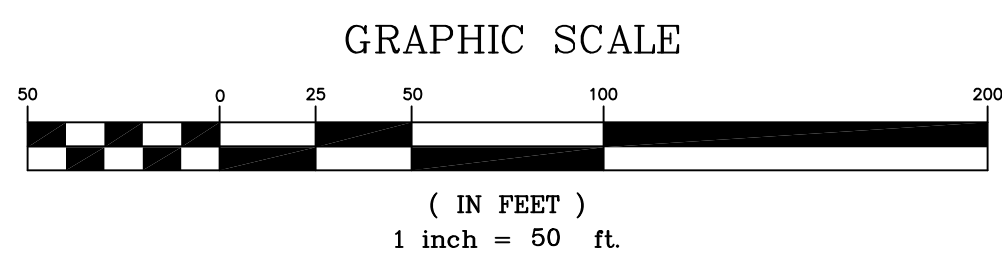
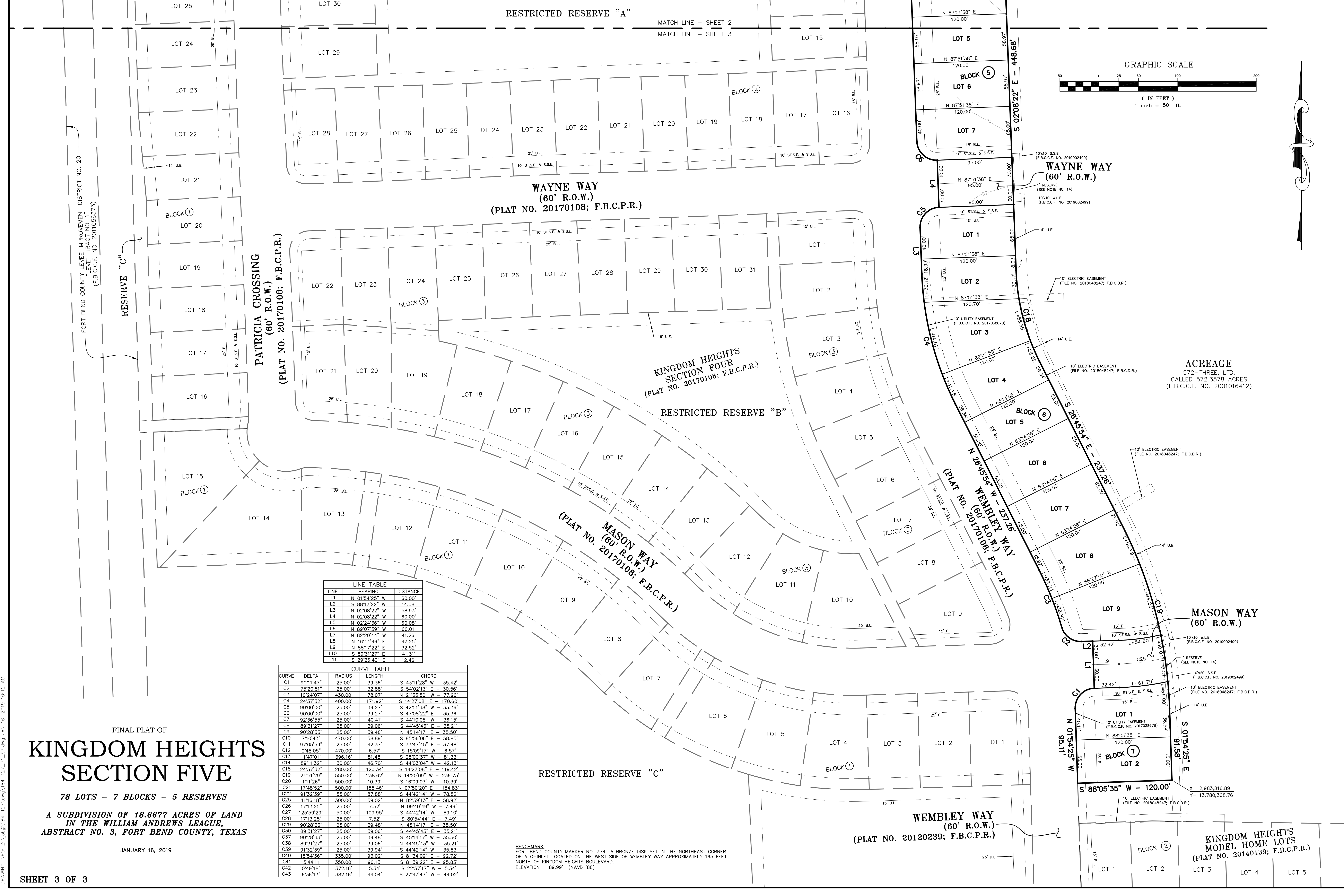
19855 Southwest Freeway, Suite 300  
Sugar Land, Texas 77479  
CONTACT: MARK MILLIS  
PHONE: (281) 343-1400

~ ENGINEER ~  
**SHERRINGTON-HUMBLE, LLC**  
9829 Whithorn Drive  
Houston, Texas 77095  
PHONE: (281) 656-8837  
ENGINEERING FIRM NO. F-525

~ SURVEYOR ~  
**TEXAS ENGINEERING AND MAPPING COMPANY**  
12718 Century Drive  
Stafford, Texas 77477  
PHONE: 281.491.2525 FAX: 281.491.2535  
SURVEYING FIRM NO. 10119000 / ENGINEERING FIRM NO. F-2906  
www.team-civil.com  
Job No. 184-127  
JANUARY 16, 2019



MATCH LINE - SHEET 2  
MATCH LINE - SHEET 3



**ACREAGE**  
 572-THREE, LTD.  
 CALLED 572.3578 ACRES  
 (F.B.C.C.F. NO. 2001016412)

LINE	BEARING	DISTANCE
L1	N 01°54'25" W	60.00'
L2	S 88°17'22" W	14.58'
L3	N 02°08'22" W	58.93'
L4	N 02°08'22" W	60.00'
L5	N 02°24'36" W	60.08'
L6	N 89°07'39" W	60.01'
L7	N 82°20'44" W	41.26'
L8	N 16°44'46" E	47.25'
L9	N 88°17'22" E	32.52'
L10	S 88°31'27" E	41.31'
L11	S 29°26'40" E	12.46'

CURVE	DELTA	CURVE TABLE		CHORD
		RADIUS	LENGTH	
C1	90°11'47"	25.00'	39.36'	S 43°11'28" W - 35.42'
C2	75°20'51"	25.00'	32.88'	S 54°02'13" E - 30.56'
C3	10°24'07"	430.00'	78.07'	N 21°33'50" W - 77.96'
C4	24°37'32"	400.00'	171.92'	S 14°27'08" E - 170.60'
C5	90°00'00"	25.00'	39.27'	S 42°51'38" W - 35.36'
C6	90°00'00"	25.00'	39.27'	S 47°08'22" E - 35.36'
C7	92°36'55"	25.00'	40.41'	S 44°10'05" W - 36.15'
C8	89°31'27"	25.00'	39.06'	S 44°45'43" E - 35.21'
C9	90°28'33"	25.00'	39.48'	N 45°14'17" E - 35.50'
C10	71°0'43"	470.00'	58.89'	S 85°56'06" E - 58.85'
C11	97°05'59"	25.00'	42.37'	S 33°47'45" E - 37.48'
C12	04°8'05"	470.00'	6.57'	S 15°09'17" W - 6.57'
C13	11°47'01"	396.16'	81.46'	S 28°00'37" W - 81.33'
C14	89°11'32"	30.00'	46.70'	S 44°03'04" W - 42.13'
C18	24°37'32"	280.00'	120.34'	S 14°27'08" E - 119.42'
C19	24°51'29"	550.00'	238.62'	N 14°20'09" W - 236.75'
C20	111°26'	500.00'	10.39'	S 16°09'03" W - 10.39'
C21	174°8'52"	500.00'	155.46'	N 07°50'20" E - 154.83'
C22	91°32'59"	65.00'	87.88'	S 44°42'14" W - 78.82'
C25	11°16'18"	300.00'	59.02'	N 82°39'13" E - 58.92'
C26	171°3'25"	25.00'	7.52'	N 09°40'49" W - 7.49'
C27	125°59'29"	50.00'	109.95'	S 44°42'14" W - 89.10'
C28	171°3'25"	25.00'	7.52'	S 80°54'44" E - 7.49'
C29	90°28'33"	25.00'	39.48'	N 45°14'17" E - 35.50'
C30	89°31'27"	25.00'	39.06'	S 44°45'43" E - 35.21'
C37	90°28'33"	25.00'	39.48'	N 45°14'17" E - 35.50'
C38	89°31'27"	25.00'	39.06'	N 44°45'43" W - 35.21'
C39	91°32'39"	25.00'	39.94'	S 44°42'14" W - 35.83'
C40	15°54'36"	335.00'	93.02'	S 81°34'09" E - 92.72'
C41	15°44'11"	350.00'	96.13'	S 81°39'22" E - 95.83'
C42	0°49'18"	372.16'	5.34'	S 22°57'17" W - 5.34'
C43	6°36'13"	382.16'	44.04'	S 27°47'47" W - 44.02'

FINAL PLAT OF  
**KINGDOM HEIGHTS SECTION FIVE**

78 LOTS - 7 BLOCKS - 5 RESERVES  
 A SUBDIVISION OF 18.6677 ACRES OF LAND  
 IN THE WILLIAM ANDREWS LEAGUE,  
 ABSTRACT NO. 3, FORT BEND COUNTY, TEXAS

JANUARY 16, 2019

BENCHMARK:  
 FORT BEND COUNTY MARKER NO. 374: A BRONZE DISK SET IN THE NORTHEAST CORNER  
 OF A C-INLET LOCATED ON THE WEST SIDE OF WEMBLEY WAY APPROXIMATELY 165 FEET  
 NORTH OF KINGDOM HEIGHTS BOULEVARD.  
 ELEVATION = 89.99' (NAVD '88)