

**EMS
TODAY**



The **JEMS** Conference
& Exposition [®]

FEBRUARY 20-22, 2019
NATIONAL HARBOR, MD
GAYLORD NATIONAL RESORT & CONVENTION CENTER

ADVANCING CARE IN THE COMMUNITY



**EXCLUSIVE
OFFER INSIDE
EMSTODAY.COM**

OWNED & PRODUCED BY:



OFFICIAL MEDIA BRAND
OF EMS TODAY:



#EMSTODAY



LETTER FROM THE *JEMS* EDITOR-IN-CHIEF & EMS TODAY CONFERENCE CHAIRMAN

The 2019 EMS Today: The JEMS Conference and Exposition will be held at the Gaylord National Resort & Convention Center in National Harbor, MD. This event is attended by thousands of EMS professionals from 50 countries, EMS Today is one of the most respected international EMS events in the world with unsurpassed content. At EMS Today we are all “Medics” with a common mission – here we will learn and take home the latest information to help us save lives and do our jobs in a safe and effective manner!

We have gathered the most forward-thinking lecturers and EMS industry leaders to present you with information that will both challenge your mind and introduce new ideas. We’ve selected an outstanding faculty that consists of EMS and Fire Service leaders and providers; instructors; researchers; and EMS medical directors to present important operational concepts and procedures, and cutting-edge clinical information. You will not only obtain important continuing education credit by attending conference sessions, but will also take the information you learn at EMS Today back home to enhance your service and, more importantly, the care offered to your patients.

This year we’re proud to continue our breakfast networking roundtables, giving attendees the chance to focus on hot topics in the industry—moderated by leading experts—and discuss, debate and learn from one another. In addition, we are introducing a special Women in EMS breakfast session.

The JEMS Games, recognized as one of the world’s most challenging, educational and entertaining clinical EMS competitions will feature the Preliminary Competition which challenges participating teams in a four-phase skill and knowledge sequence on Tuesday, and the thrilling Final Competition on Thursday night, with the winning teams announced at the end of the event!

This year’s EMS Today Exhibit Hall will be packed with more than 250 exhibitors, with many of our exhibitors debuting new product. Large floor signs will alert you to exhibitor areas where the chosen new products are named as EMS Today Hot Product.

In addition to learning from our expert faculty and discovering new products, you can also meet and socialize with attendees and faculty from throughout the world while enjoying yourself at one of the world’s greatest EMS events - and at all of our planned social events! In addition, plan on making great contacts and friends at EMS Today, as well as exchanging your contact information with them, so they can assist you throughout your career.

You can find more details about our conference and exhibition hall as well as register for the event at EMSToday.com.

I look forward to seeing you in National Harbor!



Sincerely,

A.J. Heightman, MPA, EMT-P
JEMS Editor-in-Chief
EMS Today Conference Chairman



Cover photo by Ron Jeffers

SNAPSHOT OF EMS TODAY

WHY YOU SHOULD ATTEND

EMS Today offers: networking with nearly 5,000 EMS professionals from around the world, countless hands-on experiences, 200+ CEH opportunities and the most innovative products and services available to the industry displayed by over 250 exhibiting companies. EMS Today is produced by *JEMS*, the leader in EMS education for over 35 years. EMS Today is a unique - and stimulating - experience for EMS personnel worldwide, and it is supported and fed by the credibility, quality and excellence of *JEMS*.

NETWORK
WITH NEARLY



5,000
ATTENDEES



OVER
30
COUNTRIES
REPRESENTED

VISIT WITH OVER



250+

EXHIBITING COMPANIES



LEARN FROM

150+
SPEAKERS

“

I WOULD SAY THAT PEOPLE HAVE TO COME BECAUSE YOU GET TO ASK QUESTIONS TO ALL THESE PEOPLE WHO ARE ACTUALLY DOING THE RESEARCH, PEOPLE WHO ARE GOING TO BE AFFECTING WHY OUR PROTOCOLS ARE CHANGING AND WHY IT'S GOING THAT WAY. YOU GET TO SEE ALL THE NEW DEVICES, ALL THE NEW TOOLS...THERE'S JUST SO MUCH INFORMATION HERE THAT IT GIVES YOU A HEAD START TO THINGS TO COME A YEAR OR TWO IN ADVANCE.

— JACOB VINZANT, AMERICAN MEDICAL RESPONSE

”

KEEP UP WITH
ALL THINGS
EMS TODAY
BY VISITING
OUR WEBSITE,
EMSTODAY.COM
AND FOLLOWING
OUR HASHTAG,
[#EMSTODAY](https://twitter.com/EMSTODAY).

SPONSORS

(As of August 24, 2018)

**EMS
TODAY
THANKS**

**THE 2019
SPONSORS FOR
THEIR SUPPORT OF
THIS YEAR'S EVENT!**



BINDER LIFT.



BECAUSE HUMANS DON'T
COME WITH HANDLES™



IMAGE TREND®



MICROFLEX®



Pulmodyne®



stryker

Teleflex®



ZOLL

INTERESTED IN SPONSORSHIPS? CONTACT ROD TODAY!

Rod Washington | 918-831-9481 | RodW@Pennwell.com

STRATEGIC PARTNERS:



Paramedic Chiefs
of Canada
Chefs Paramédics
du Canada



SCHEDULE OF EVENTS

All activities will take place at the Gaylord National Convention Center unless otherwise noted.

MONDAY, FEBRUARY 18, 2019

Vehicle Move-In	11:00AM
Exhibitor Move-In (booths 400 sq. ft. and up)	1:00 PM – 5:00 PM
Registration	3:00 PM – 6:00 PM

TUESDAY, FEBRUARY 19, 2019

Registration	7:00 AM – 5:00 PM
JEMS Games Preliminary Competition (must register)	8:00 AM – 5:00 PM
Pre-Conference Workshops (must register)	8:00 AM – 5:00 PM
Exhibitor Move-In (all exhibitors)	8:00 AM – 5:00 PM

WEDNESDAY, FEBRUARY 20, 2019

Registration	7:30 AM – 6:00 PM
Exhibitor Move-In (all exhibitors)	8:00 AM – 12:00 PM
Opening Ceremonies & Keynote	9:00 AM – 10:30 AM
Conference Sessions	11:00 AM – 12:00 PM
Lunch & Learn (must register)	12:30 PM – 2:00 PM
Conference Sessions	2:00 PM – 3:00 PM
Exhibit Hall Open	3:00 PM – 6:00 PM
Hands On Experience, Exhibit Hall	3:00 PM – 5:00 PM
Opening Reception, Exhibit Hall	4:30 PM – 6:00 PM
ZOLL Shockfest, Pose Lounge at Gaylord	6:15 PM

THURSDAY, FEBRUARY 21, 2019

Registration	7:00 AM – 5:00 PM
Women in EMS Networking Breakfast (must register)	8:00 AM – 9:30 AM
Conference Sessions	8:30 AM – 11:00 AM
Exhibit Hall Open	10:00 AM – 5:00 PM
Hands On Experience, Exhibit Hall	11:00 AM – 1:30 PM
Conference Sessions	2:00 PM – 3:30 PM
JEMS Games Tailgate Reception, Exhibit Hall	3:30 PM - 5:00 PM
JEMS Games Final Competition	5:15 PM – 7:30 PM

FRIDAY, FEBRUARY 22, 2019

Registration	7:30 AM – 12:30 PM
Breakfast Roundtable (must register)	8:00 AM – 9:30 AM
Conference Sessions	9:00 AM – 10:00 AM
Exhibit Hall Open	10:00 AM – 1:00 PM
Conference Sessions	10:30 AM – 11:30 AM
EMS Today Exhibit Floor Giveaway	12:45 PM
Exhibitor Move Out	1:00 PM – 8:00 PM
Conference Sessions	1:15 PM – 2:15 PM

**Times are tentative and subject to change

NETWORKING & SPECIAL EVENTS



OPENING NETWORKING RECEPTION

Open to all attendees

Join us at the opening reception of the exhibition hall. Enjoy complimentary drinks and networking with an international assembly of EMS Professionals.

Sponsored by:



NEW THIS YEAR!

WOMEN IN EMERGENCY SERVICES - BREAKFAST PANEL

Join a diverse group of women in EMS and Fire Service agencies who have been successful in achieving leadership positions - and careers that support the delivery of emergency services. Each will discuss their path to success as well as the obstacles they faced along the way.

Limited seating available. Cost for the breakfast panel is \$40.00 (breakfast included).



BREAKFAST ROUNDTABLES

These informal roundtable discussions, each addressing a different topic moderated by an industry expert, are an ideal opportunity to ask questions, share information and learn about new trends, current issues or solutions to specific challenges.

Seating is limited.

Cost for breakfast is \$40.00

Sponsored by:

IMAGETREND®

Medtronic
Further. Together





HANDS-ON EXPERIENCE

Open to all attendees

Test-drive new equipment and products during the Hands-On Experience, all while earning CE credits. This is the go-to place to discover new products and put them test right on the exhibit hall floor.

Founding Sponsor:  **iSimulate**



LUNCH & LEARN

*Wednesday, February 20, 2019
12:30 PM - 2:00 PM*

Enjoy lunch while learning about critical topics and emerging trends. Lunch will be provided to the first 100 people to be scanned and admitted. More details to come.

Sponsored by:

IMAGETREND®  **Medtronic**
Further. Together



JEMS GAMES TAILGATE PARTY IN THE EXHIBIT HALL

Open to all attendees

Grab a drink on the exhibit floor before the JEMS Games begins!

ZOLL[®] SHOCK FEST

FOOD | DRINKS
NETWORKING
LIVE DJ

**WEDNESDAY,
FEBRUARY 20, 2019**

**POSE ROOFTOP LOUNGE,
18TH FLOOR AT THE
GAYLORD NATIONAL**

**STOP BY ZOLL
BOOTH #801 TO
PICK UP YOUR 2
FREE DRINK TICKETS**

ZOLL
1 DRINK

ZOLL
DRINK

6:15- 10:00 PM

**OPEN TO ALL ATTENDEES
WEAR BADGE FOR ENTRY**

#ZOLLSHOCKFEST

AN EMS TODAY EVENT SPONSORED BY: **ZOLL**

172888000



JEMS GAMES CLINICAL COMPETITION

DOES YOUR CREW HAVE WHAT IT TAKES?



The JEMS Games is a challenging and educational clinical competition highlighting cutting-edge simulation technology. The preliminary competition challenges teams to appropriately assess and provide quality, efficient patient care during three realistic, high-pressure scenarios. The top three teams move on to the final competition, a 20-minute high-energy scenario that requires managing multiple patients. An awards ceremony immediately follows where we award 1st, 2nd and 3rd place medals.

COME WATCH THE ACTION AT THE FINALS!

All attendees are encouraged to attend the final competition, where you'll not only enjoy the adrenaline-pumping action but also earn 1 CEH.

Founding Sponsor:



Laerdal[®]
helping save lives

TEAM PRIZES:

GOLD - \$1,000

SILVER - \$750

BRONZE - \$500

Teams include 3 members and 1 alternate (optional).



Entry is limited to the first 25 teams. Team registration fee is \$100.

SPACE IS LIMITED & FILLING UP FAST!

SECURE YOUR TEAM'S SPOT TODAY!
EMSTODAY.COM/JEMS-GAMES.HTML

DEADLINE TO ENTER: DECEMBER 31, 2018

Entry requirements, competition information and registration forms are available at emstoday.com/jems-games.html

@EMSTODAY

#EMSTODAY

9

—2018— EMS 10

EMS 10: INNOVATORS IN EMS

JEMS, with support from Physio-Control and Stryker, is proud to present the EMS 10: Innovators in EMS awards. Now in its 10th year, the awards recognize individuals who have contributed to EMS in an exceptional and innovative way.

Ten outstanding EMS professionals were recognized at the 2018 EMS Today Conference as the “EMS10: Innovators in EMS” for 2017. Their efforts are an inspiration to the rest of the EMS community. Take a moment today to nominate the next innovator in EMS. Details below.



2017 AWARD RECIPIENTS

(AWARDED
IN 2018)

- **PAUL BANERJEE, DO**
Medical Director, Polk County (Fla.) Fire Rescue
- **KEVIN MCGINNIS, MPS**
Board Member, FirstNet
- **PETER MCKIE, BaHsc, EMT-P**
CEO, iSimulate
- **E. STEIN BRONSKY, MD**
Medical Director, Colorado Springs (Colo.) Fire Department
- **ALAN MOUNTFORD, ACP, MPA**
Manager, Team Australia EMS
- **CAPTAIN FRANK K. BUTLER, MD**
Committee on Tactical Combat Casualty Care,
United States Navy (Ret.)
- **CHAD PORE, NREMT-P**
EMS Director, Butler County (Kan.) EMS
- **MARC ECKSTEIN MD, MPH**
Medical Director, Los Angeles (Calif.) Fire Department
- **KENNETH SCHEPPKE, MD**
Medical Director, Palm Beach County (Fla.) Fire Rescue
- **JULIE LAHR, EMT-P, HHP**
Paramedic, Williamson County (Texas) Mobile Outreach Team

**KNOW SOMEONE WHO HAS MADE A SIGNIFICANT
CONTRIBUTION TO THE EMS INDUSTRY IN 2018?**

Nominate them at JEMS.com/ems10 — Deadline for 2018 Nominations: November 30, 2018

Teleflex® CADAVER LAB

**THURSDAY,
FEBRUARY 21,
2019**

8:00 AM – 10:00 AM

10:30 AM – 12:30 PM

1:30 PM – 3:30 PM

PREHOSPITAL EMERGENCY CARE PROCEDURAL CADAVER LAB

DIRECTOR: DAN SMITH, RN, BSN, CFRN, EMT-P

THREE SESSIONS WILL BE OFFERED.

OPEN TO GOLD OR SILVER PASSES AT NO ADDITIONAL COST.

SPACE IS LIMITED PER SESSION AND PRE-REGISTRATION IS REQUIRED.

The purpose of this session, presented by Teleflex, is to provide a unique opportunity to review relevant anatomy associated with critical care and lifesaving emergency procedures. Participants will enhance their understanding of the various procedures and the associated risks and benefits through the hands-on practicum. The relevant review of the anatomy will include airway, chest cavity and vascular access landmarks. Key Opinion Leaders, nationally known EMS Medical Directors, and Emergency Medical Services Providers will serve as faculty for this program.

Under expert instruction, participants will have the opportunity to practice the following procedural skills: basic airway management, direct and video laryngoscope intubation, intraosseous access, hemorrhage control and various other prehospital emergency procedures. The participants will have the opportunity for anatomical exploration as it relates to these procedures providing a unique appreciation of the anatomy and the impact of the disease process. An analysis of the unnecessary risk and the potential for complications when these procedures are performed in suboptimal conditions will be explored.



CONTINUING EDUCATION

CONTINUING EDUCATION CREDITS ARE EARNED ON A 1-UNIT-PER-HOUR BASIS. FOR EXAMPLE, A 1 HOUR SESSION WILL GIVE YOU 1 CEH.



CAPCE

Continuing Education Hours (CEH) will be applied for through the Commission on Accreditation for Pre-Hospital Continuing Education (CAPCE). CAPCE is an organization established to develop and implement policies to standardize the review and approval of EMS continuing education activities. CAPCE will share all course completions for Nationally Registered participants with NREMT. Reported course completions will occupy appropriate fields in the individuals recertification file.

SPONSORING ORGANIZATIONS OF CAPCE

- American College of Emergency Physicians
- American College of Osteopathic Emergency Physicians
- American Heart Association
- National Association of Emergency Medical Services Physicians
- National Association of Emergency Medical Technicians
- National Association of EMS Educators
- National Association of State EMS Officials
- National Association of State EMS Officials/Education Committee
- National Registry of Emergency Medical Technicians



NREMT

The National Registry recertification process requires that EMS Professionals maintain continued competency by meeting the educational requirements as outlined in the National Continued Competency Program (NCCP). Specific requirements may vary from state to state. For more information, please visit NREMT.org. Each session in the program is marked with the National Registry topic category it satisfies towards the education requirements. If no category is given, the session qualifies as CEU only. For the most up-to-date information on the National Registry categories, please check the EMS Today website.



NATIONAL EMS MANAGEMENT ASSOCIATION PARAMEDIC OFFICER CERTIFICATION

EMS Today has partnered with the National EMS Management Association (NEMSMA) to offer accredited leadership education. Sessions labeled NEMSMA have been reviewed by NEMSMA and will contribute to the prerequisites for Paramedic Officer credentialing. Credit hours earned for each NEMSMA accredited session will be equal to the number of CEH awarded unless otherwise noted on your CEH certificate. For the most up-to-date information on NEMSMA-accredited sessions at EMS Today, be sure to check the EMS Today website.

WE MAKE IT EASY TO EARN CEH WHILE AT EMS TODAY

STEP 1: Register for EMS Today as a Full Conference Delegate

STEP 2: Attend the EMS Today sessions you need for CE credit. We will scan your badge upon entry to each session you attend in order for you to receive credit.

STEP 3: After the conference, you will be sent an email with instructions on how to download a PDF of your certificate.

ALL license information must be correct in order to receive credit for the sessions you attend. Make sure Registration has your correct license information.



OPENING KEYNOTE SESSION

OPEN TO ALL
ATTENDEES &
EXHIBITORS

WEDNESDAY,
FEBRUARY 20, 2019
9:00 - 10:30 AM

Sponsored by: **ZOLL**®



EVENT EMCEE:

A.J. HEIGHTMAN, MPA, EMT-P
EMS TODAY CONFERENCE CHAIR,
JEMS EDITOR-IN-CHIEF

PRESENTING THESE 2019 AWARDS:

Lifetime Achievement Award

**James O. Page / JEMS
Leadership Award**

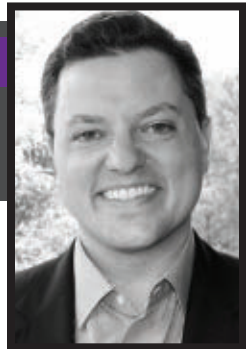
Sponsored by:

HARTWELL MEDICAL
Creating Quality Products for Life

**John P. Pryor, MD / Street
Medicine Society Award**

KEYNOTE SPEAKER

RYAN JENKINS
AUTHOR, SPEAKER



Ryan Jenkins is an internationally recognized keynote speaker and author of the book, *The Millennial Manual: The Complete How-To Guide to Manage, Develop, and Engage Millennials at Work*.

He helps organizations gain clarity around Millennials and Generation Z so that leaders can effectively lead, engage, and sell in today's multi-generational marketplace.

Ryan has been featured in *Forbes*, *Fast Company*, *Inc.*, and *SUCCESS Magazine*.

Ryan's blog, podcast, and Inc.com column inspire and equip thousands of people every week. Ryan's passion, experience as a Millennial himself, and his fresh and forward-thinking approach to generations have made him one of the most highly sought after generational and future of work keynote speakers.

Ryan is also a Partner at 21Mill.com, a micro-learning training platform dedicated to helping Millennials perform better at work.

CO-LOCATED EVENT

TUESDAY, FEBRUARY 19, 2019

8:00 AM - 5:00 PM

NEMSMA EMS OFFICER TEST PREPARATION COURSE & WRITTEN EXAMINATION

Vincent D. Robbins, FACPE, FACHE, President & CEO, MONOC, President, NEMSMA

This NEMSMA workshop will familiarize EMS Officer applicants with the format of the EMS officer examinations. The 7 Pillars of EMS Officer Competency knowledge will be reviewed as well as the Officers' written examination format and style, and the critical thinking process to use in selecting answers. For Manager or Executive certification, a review of the required Oral Boards exam will also be provided. And, for Executive Officer candidates, a scoring explanation for the required "portfolio" submission, will be provided. Completed applications are NOT necessary to be eligible to participate in these instructional courses.

PRE-CONFERENCE WORKSHOPS

TUESDAY, FEBRUARY 19, 2019

8:00 AM – 5:00 PM

THE CHANGING ROLES OF EMS IN COMBATING TERRORISM WHILE OPERATING IN HOSTILE ACTIVE SHOOTER/TERRORIST ENVIRONMENTS

NREMT CATEGORY: OPERATIONS

Geoffrey Williams, QFSM, ChFI, CIETecRI, MIFireE, Retired Principal, Chief Fire and Rescue Officer, Scotland, UK

Paul Schuller, Battalion Chief (R), San Jose Fire Dept.

This comprehensive eight-hour workshop will include case studies, table top exercises and an interactive class component focused on the changing roles of EMS delivery during active shooter or terrorist attacks. The implications of new 'offensive' roles for first responders and essential safety requirements for each level of management will be identified along with best practices to determine cost effective training that will enhanced safety levels. You'll learn how cutting-edge practices and procedures can be applied while operating in 'Terrorist induced Hostile Environments', which can also enhance the roles and relations of Labor and Management.

COMMUNITY PARAMEDICINE: MOTIVATIONAL INTERVIEWING

NREMT CATEGORY: OTHER

Brandon Pate, B.S., L.P., Critical Care Paramedic, MedStar Mobile Healthcare
Desiree Partain, CCP-P, Clinical Program Manager, MedStar Mobile Healthcare

One of the most challenging obstacles community paramedics face is trying not to fix all of their patients' problems. For many, EMS is a desirable industry because it offers the ability to help others in need. But what do you do when you are faced with a patient who doesn't want help, is resistant, or is ambivalent to change? Motivational interviewing is a therapeutic approach that moves an individual away from uncertainty and toward positive decisions based on accomplishing established goals. It allows the community paramedic the ability to empower their patients to make changes in order to ensure program success through patient autonomy, collaboration, and evocation.

DEVELOPING ESSENTIAL EMS FINANCIAL EXPERTISE & PREPARING FOR EMS PAYMENT REFORM

NREMT CATEGORY: OTHER

Asbel Montes, BS, V.P. of Governmental Relations and Reimbursement, Acadian Ambulance Service
Brenda Staffan, BA, Project Director, REMSA
Jonathan Washko, MBA, NRP, AEMD, Assistant Vice President of Operations, Northwell Center for EMS
Matt Zavadsky, MS-HSA, NREMT, Chief Strategic Integration Officer, MedStar Mobile Healthcare
Robert Nadolski, BS, NREMT-P (R), Clinical Administrator, Emory Healthcare/School of Medicine
Other Stakeholder Speakers

This workshop will provide agencies with the concepts necessary to develop the key EMS financial acumens necessary to prepare for the future of payment reform. You'll get with keen insights from industry experts directly involved in transforming payment models for EMS, advisement of policy formation for data collection tool development and interest-based stakeholder consensus building.

In the morning, we will go over Payment Reform 101 & the Cost Data Collection Tool; to include:
1.) The history of the existing CMS Payment System 2.) The Interest based negotiation process vs. negotiated rule making 3.) The 4-steps of progression necessary for payment reform and its vision for EMS 4.) The importance of evidence-based value and the use of outcome measures 5.) Understanding the importance of differentiating the cost of readiness vs. the cost of services performed and how this will be accomplished 6.) The cost collection tool – where does it stand and who will be impacted 7.) How can these payment principles be leveraged today with other payers.

In the afternoon, we will go over Developing your EMS Financial Acumen; to include 1.) Essential EMS finance skills 2.) The importance of P&L granularity & Chart of Account Development 3.) Revenue Cycle Management 4.) Cost Management & Cost Reporting.

EMERGENCY MEDICAL SERVICES: THE RISK MANAGERS PERSPECTIVE

NREMT CATEGORY: OTHER

Gordon Graham, Graham Research Consultants

In this highly informative, dynamic and unprecedented workshop, Gordon Graham, the foremost expert on incident analysis as it relates to public safety events will focus on risk management, consequence management, decision-making, EMS, the fire service, law enforcement, and other industries where highly complex and dynamic decisions often mean the difference between life and death. He will teach you how to utilize risk management as a tool in decision-making when there's discretionary time - and when there is not.

PRACTICAL DATA ANALYSIS FOR EMS

NREMT CATEGORY: OPERATIONS

Michael Zelenetz, Analytics Project Leader, New York Presbyterian

This workshop we explain how to create an infrastructure for data analysis and ask questions that can be answered by data. Characteristics of a data driven department and how data can be used to improve operations will also be discussed. An actual EMS data set will be used, and you will learn how to clean data and prepare it for analysis. "Tableau" will then be used to get insights out of data such as time spent at hospital, average time to hospital, location of calls, etc. The class will split into small groups and will work on solving an operational problem.

PRE-CONFERENCE WORKSHOPS

WILDERNESS EMS: PROVIDING CARE WAY OUT THERE

NREMT CATEGORY: MEDICAL

Jonathan Politis, MPA, NRP, EMS Educator/Consultant/Paramedic, Jon Politis Emergency Services Education

Will Smith, MD, Paramedic, Medical Director, Jackson Hole Fire/EMS, National Park Service

Rural, remote or “wilderness” incidents are big magnifiers of small problems. The environment, response distance and ability to carry everything needed requires a different approach. This workshop will teach you the essential concepts of Wilderness Medicine, based on Wilderness Medical Association guidelines. It will feature a mixture of lecture, discussion and hands on training. Topics to be covered: 1) Anatomy of “backcountry”/rural/wilderness emergencies 2) How to prevent emergencies & the essentials of outdoor leadership 3) How to effectively deal with common wilderness medical & environmental issues 4) How to adapt supplies and equipment to the wilderness environment 5) The essentials of helicopter evacuation/rescue in rural/remote/wilderness areas 6) Improvised wilderness evacuation & litter evacuation/carries.

TUESDAY, FEBRUARY 19, 2019

8:00 AM – 12:00 PM

ACTIVE SHOOTER/VIOLENT EVENT CORE SKILLS WORKSHOP - STOP-THE-BLEED PLUS, TACTICAL CASUALTY CARE, BEST LIFTS, DRAGS, CARRIERS, (LDCs), RTF DRILLS

NREMT CATEGORY: OPERATIONS

Alf Zeilinger, NRP-T, TP-C, EMS-I, Clinical Services Coordinator, Emergency Medical Services Authority

David Rathbun, Deputy Sheriff/Paramedic, UCLA Center for Prehospital Care

Michael Meoli, CEO, Tactical Rescue Options LLC

This hands-on course begins with an advanced ACS (American College of Surgeons) certified Stop-the-Bleed (B-Con) class with an option for you to teach others in your region. Then an in-depth the latest Tactical Casualty Care and Rescue Task Force (RTF) concepts will be presented along with the best inter-operable techniques for rapidly extracting victims from a dynamic or violent incident. The class will put it all together, moving tactically to various positions, treating and extracting victims using the knowledge and motor-memory techniques acquired.

This workshop will also be available from 1:00 PM - 5:00 PM

D3: DO IT - DEBRIEF IT - DISSECT IT

NREMT CATEGORY: OTHER

Amar Patel, DHSc, MS, NRP, CHSE, FSSH, Executive Director, WakeMed Innovations, WakeMed Health & Hospitals

Andrew E. Spain, MA, NCEE, EMT-P, Director of Accreditation and Certification, Society for Simulation in Healthcare

Jennifer McCarthy, MAS, NRP, MICP, CHSE, Founder and President, 579 Solutions

In this 4-hour workshop, you will observe an EMS simulation activity and debriefing of participants. You will then be taken through the dissection to discover and reveal the design-to-execution process. This is ideal for those who want to understand evidence-based simulation practice and ways to improve simulation activities to yield better outcomes.

SPONSORED BY:



PERFORMANCE ANXIETY AND THE FIRST RESPONDER

NREMT CATEGORY: OPERATIONS

Ric Jorge, Firefighter, Tactical Resiliency Training

It's not about your hardware it's about the software. This lecture covers a simple process that explains first responder mental health reactions and needs. It will also cover, rumination (the damage of negative self-talk), the pros and cons of hyper vigilance, how sleep deprivation impacts first responders, and the neurobiology consequences and solutions. This is an interactive class with some physical activities, be prepared to laugh and sweat a little.

ULTRASOUND USE IN PREHOSPITAL CARE & RESUSCITATIONS

NREMT CATEGORY: MEDICAL

Faizan H. Arshad, MD, EMS Medical Director, Healthquest Systems

This 4-hour Hands-On workshop led by a team of ultrasound industry experts will guide you through point-of-care ultrasonography (POCUS) and focus on clinical applications, efficacy, and patient cases where ultrasound positively impacted patient outcomes. Learn how your crews can quickly differentiate from the etiologies of shock in hypotensive patients, evaluate for a pericardial tamponade in your penetrating trauma victims and more! The areas of concentration will be: ECHO, E-FAST (extended focused assessment of sonography in trauma), abdomen and the use of US in Procedural Guidance. You will rotate through four (4) different hands on stations every 30 minutes.

This workshop will also be available from 1:00 PM - 5:00 PM

TUESDAY, FEBRUARY 19, 2019

1:00 PM – 5:00 PM

JUST DO IT: SIMULATION MADE EASY

NREMT CATEGORY: OTHER

Chris Kroboth, Training Lieutenant, Fairfax County Fire and Rescue

Gary Heigel, Emergency Services Department Chair, Rogue Community College

Jon Bailey, QA/QI Lieutenant, Fairfax County Fire and EMS

This hands-on workshop will engage and empower participants to facilitate realistic and effective simulations with ease. The course will be broken down into how to select and set up simulation location and design, student or end-learner scenario integration, moulage on a dime, and debriefing 101. The focus of the course is to efficiently utilize equipment, staff, students, environments, and resources readily available to educators for simulation set up and deployment.

SPONSORED BY:



NATIONAL AMBULANCE BUS (AMBUS) WORKSHOP

NREMT CATEGORY: OPERATIONS

Joseph Zalkin, BSHS-EMC, Paramedic, Executive Director, Wake County EMS Foundation

Join the National AmBus Coalition for a workshop on the use of ambulance buses during MCIs, evacuations and support to major events. This workshop is open to Owners and Operators along with others who have interest in acquisition, operation, training in AMBus utilization the agenda includes: 1) Review of mission utilization for evacuation and rehabilitation 2) Lessons learned from deployments 3) Best practices for operator training, readiness and deployment 4) Currently available ambulance bus manufacturers.

PET FIRST AID FOR THE EMS PROVIDER

NREMT CATEGORY: MEDICAL

Lisa Faust, Master Trainer, CMPTI, A New Way to Life

Pet First Aid for EMS providers is designed for EMS professionals outside of a veterinary hospital setting for dog and cat. Administering O2 to an injured dog or cat increases their chance of survival and may reduce the severity of hypoxic shock, trauma and recovery. Numerous municipalities have added the oxygen masks to their squads and several states have passed laws to allow EMS providers to offer aid in an emergency to animals. This course will give you the tools to provide emergency life-saving care to animals in need.

CONFERENCE SESSIONS

**Classes are listed by date, time
and alphabetically by session title.*

WEDNESDAY, FEBRUARY 20, 2019

11:00 AM - 12:00 PM

THE ALASKA MODEL FOR SUSTAINABLE COMMUNITY PARAMEDICINE

NREMT CATEGORY: OTHER

Michael Levy, MD, FAEMS, FACEP, FACP, Medical Director, Anchorage Fire Department, Chief Medical Adviser, Stryker Physio-Control

Dr. Levy will review the promises of community paramedicine as well as the barriers to sustainability through an overview of the highly-successful Alaska Health Aide program, which has provided an extensive network of quality care by non-physicians in remote areas of Alaska. He will also discuss the opportunities and challenges of adapting this approach to Community Paramedicine.

ADVANCED CONCEPTS IN EtCO₂ MONITORING

NREMT CATEGORY: AIRWAY, RESPIRATORY, VENTILATION

Andrew Latimer, EMS Physician, Seattle Fire, Medic One, University of Washington, Airlift Northwest

Dr. Andrew Latimer will discuss novel uses of waveform EtCO₂ monitoring for both BLS and ALS providers and information that can be gained from the waveform beyond the value and slope. He'll introduce you to the concept of "EtCO₂ Gap" and how you can use this information to more safely manage the airways of critically ill and complex patients. Real EtCO₂ waveform recordings and actual cases to illustrate more advanced concepts.

ASK A QUALITY EXPERT

NREMT CATEGORY: OTHER

Moderator: *Mike Taigman, MA, Improvement Guide, FirstWatch*

Panelists: *Brooke Burton, NRP, FACPE, Quality Director, Gold Cross Ambulance*

Justin Reed, NRP, BS, Assistant Chief - EMS, Cy-Fair Volunteer Fire Department

Scott Bourn, PhD, RN, EMT-P, VP of Clinical Quality & Impact, Securisyn Medical, Senior Quality Consultant, ESO Solutions

Don't miss your chance to hear successful experiences from EMS quality experts! Join these industry leaders as they share their groundbreaking quality projects. This fast-paced class will offer you the opportunity to ask questions and formulate ideas for your agencies.

BRIDGING THE GAP BETWEEN THE FBI & EMERGENCY MEDICAL SERVICES

NREMT CATEGORY: OPERATIONS

Jessica Young, MSFS, Management and Program Analyst, FBI

In this informative session, you'll learn how the FBI's EMS Outreach is working to bridge the gap between the FBI and medical community related to chemical, biological, radiological, and nuclear incidents/threats and how the FBI's Weapons of Mass Destruction Directorate Biological Countermeasures Unit (BCU) has jointly led the Joint Criminal-Epidemiological (Crim-Epi) Investigations Program. You'll learn: 1) The FBI-WMD Response Process; 2) The CBRNE Threat Profile; 3) Details about the Joint Criminal and Epidemiological Investigations Workshop; and 4) Other FBI Response Initiatives.

CREDENTIALING FOR FIRE EMS CHIEFS

NREMT CATEGORY: OTHER

Debbie Sobotka, Deputy Director, Center for Public Safety Excellence, Inc.

This session will discuss the benefits of going through the process for achieving professional designation as a Chief EMS Officer in the fire service and provide you with a tutorial on the requirements of the application.

CYBERSECURITY: HOW TO PROTECT YOUR AGENCY

NREMT CATEGORY: OTHER

Allison J. Bloom, Esq., EMT, EMS-I, FACPE, Attorney, Law Office of Allison J. Bloom
Greg Mears, MD, Medical Director, ZOLL

With advances in technology, the frequency of data loss and breaches is on the rise. In addition to HIPAA breaches, data breaches are big business for thieves. Take a journey through the minefield that is cybersecurity in today's healthcare environment and learn how to protect your agency and its laptops, smartphones and other devices that can be misused, lost or stolen. You will learn why you should quickly adopt security protocols and response measures against inappropriate data disclosure and theft.

FIRE-BASED EMS: A TSUNAMI IS COMING

NREMT CATEGORY: OTHER

Bruce Moeller, PhD, Principal, Juncture Group, Inc.

Fire-based EMS systems are experiencing ever-increasing workloads and this is only the beginning. Drawing from generational demographics, Medicare data and decades of experience managing large EMS systems, this session will demonstrate why and how big the EMS system workload will increase in the next 5-10 years. Learn how to manage this extraordinary demand on your system.

FIVE KEY APPLICATIONS FOR KETAMINE IN YOUR SYSTEM

NREMT CATEGORY: MEDICAL

Jared Ross, DO, FF/EMT-T, EMS Fellow, Washington University in St. Louis

Ketamine is an old analgesic and dissociative anesthetic that has gained traction in multiple areas of medicine. It has a wide therapeutic range, is inexpensive, and multiple routes of administration, making it an optimal medication for prehospital emergency care. Come learn five mainstream protocols for Ketamine administration along with indications, contraindications, and dosing. You'll understand common adverse effects and how to treat those reactions. Dr. Ross will also discuss emerging applications for Ketamine in the prehospital setting.

MEDICAL CONSIDERATIONS FOR TECHNICAL RESCUE CONFINED SPACE/TRENCH

NREMT CATEGORY: OPERATIONS

Brian Weatherford, EMT-P, Major, Norman, OK Fire Dept.
Greg Merrell, EMT-B, Major, Oklahoma City, OK Fire Dept.

Confined Space and Trench Rescue Incidents offer challenges beyond the basic EMS call, challenges to providing appropriate medical care and to the overall safety of all first responders on scene. Come learn the safety, medical assessment and treatment considerations associated with Confined Space and Trench Rescue Environments. Learn how to size-up the scene to ensure safety for you, your crews and the victim(s). You'll learn the techniques necessary to mitigate hazards and provide medical care at these complex emergencies.

MEDICAL ERRORS & DECISION-MAKING STRATEGIES

NREMT CATEGORY: OPERATIONS

Will Smith, MD, Paramedic, Medical Director, Jackson Hole Fire/EMS, National Park Service

Medical errors stem from 3 broad categories: 1) Procedural, 2) Affective, 3) Cognitive. Recognizing these errors and personal biases, as well as applying different decision-making strategies can reduce and hopefully prevent such cases. Dr. Will Smith will show how crew resource management (CRM) and other systems of care approaches can not only prevent and/or reduce EMS medical errors, but often improve patient satisfaction, while providing optimal patient care.

CONFERENCE SESSIONS

A PREHOSPITAL APPROACH TO REFRACTORY VENTRICULAR FIBRILLATION

NREMT CATEGORY: CARDIOVASCULAR

Eric Cortez, MD, Clinical Assistant Professor of Emergency Medicine, Ohio Health Doctors Hospital

Refractory ventricular fibrillation is a unique clinical entity requiring alternative treatment techniques. Some experts suggest that traditionally used treatment algorithms do not adequately address cases of refractory ventricular fibrillation. Dr. Cortez will provide you with tips for its recognition and unique prehospital approaches to treatment, including double sequential defibrillation and sympathetic blockade. He will also present advanced treatment options such as early reperfusion therapy and the use of ECMO to save refractory VFib patients.

PREPARING FOR CMS MANDATED DATA COST COLLECTION

NREMT CATEGORY: OTHER

Asbel Montes, BS, V.P. of Governmental Relations and Reimbursement, Acadian Ambulance Service

Kathleen Lester, JD, MPH, Principal, Lester Health Law PLLC

Rebecca Williamson, BA, RN, NRP, SANE-A/P, Chief Compliance Officer, Pafford EMS

Scott Moore, Esq., EMT, AAA HR Consultant, EMS Resource Advisors LLC

CMS will mandate all ambulance service providers to submit cost data beginning in 2019. In order to reform future ambulance payments, Congress may use the data collected to determine reimbursement levels and other alternative payment methods. This team of experts will present on the necessary data elements you should begin to collect, the systems you need to develop internally to pull data and the business decisions that need to be determined in order to get accurate, meaningful results.

PROCESSING TRAGEDY- MOVING FORWARD AFTER OCTOBER 1, 2017 MASS SHOOTING

NREMT CATEGORY: OTHER

Glen Simpson, BS, AEMT, TECC Instructor, Director of Special Operations, Community Ambulance

This session will detail internal and external measures Community Ambulance has taken since the Las Vegas mass shooting tragedy and present solid advice about how your agency can address the emotional health of your personnel. Glen Simpson will show how his agency is supporting the personnel involved during the mass shooting and outline important logistical milestones to promote Stop the Bleed campaigns.

SUCCESSFUL TELEHEALTH APPLICATIONS: THE SOUTH CAROLINA EXPERIENCE

NREMT CATEGORY: OTHER

David French, Medical Director, Charleston County EMS

This lecture will present four telemedicine tools being used in Charleston, South Carolina and illustrate how telehealth can improve prehospital care. Areas to be discussed include: Distance Education; Distance Simulation; Telestroke; and Telemental Health.

WHEN THE TECH RESCUE MEDICAL EMERGENCY IS MORE THAN YOU BARGAINED FOR

NREMT CATEGORY: OPERATIONS

Brendan Abell, Firefighter, District Columbia Fire Dept.

This presentation focuses on the response of EMS units to a medical emergency that turns out to be a technical rescue incident. Emphasis will be on how to recognize immediate hazards, request needed resources, and operate safely within the scope of the responding unit until properly trained units arrive. Actual incidents will be featured along with proper safety precautions that are essential at these "low frequency/high risk" incidents.

WEDNESDAY, FEBRUARY 20, 2019

2:00 PM - 3:00 PM

ACTIVE SHOOTER/HOSTILE ENVIRONMENT PREPAREDNESS

NREMT CATEGORY: OPERATIONS

Hezedean Smith, MA, CFO, CPM, CHSE, MIFireE, Assistant Chief, Orlando Fire Department

Preparedness for active shooter/hostile environment continues to evolve as organizations identify unique methods of ensuring preparedness, training and resource allocation. Learn how a metropolitan Fire-Based EMS System took the lessons learned from a tragic mass shooting and channeled their efforts at procuring and equipping their personnel; training all responders and command staff, and revised their policies on responses to scenes of violence.

THE BASICS OF EKGs FOR EMTs: IT'S NOT THAT HARD

NREMT CATEGORY: CARDIOVASCULAR

Keith Wesley, MD, Medical Director, HealthEast Medical Transportation

Cardiac monitoring is often used, yet EMTs have not widely been permitted to interpret the ECG rhythm despite the fact that it would enhance their ability to improve the quality of care. In addition, some first responder and BLS services allow for the acquisition of 12-lead ECGs, but not their interpretation. Dr. Wesley will present the most common rhythm disturbances, along with their clinical presentation, and provide a simple approach to ECG interpretation, augmented by your real-time response via a smartphone app.

BATTLING FATIGUE AND SLEEP DEPRIVATION IN EMS

NREMT CATEGORY: OPERATIONS

P. Daniel Patterson, PhD, MPH, MS, NRP, Assistant Professor of Emergency Medicine, EMSARN Primary Investigator, EMS Agency Research Network, University of Pittsburgh

Fatigue and sleep deprivation affect more than half of all EMS personnel, with 50% reporting inadequate recovery between shifts and greater than 80% working more than one job or shifts of 48 hours or longer. Using Evidence Based Guidelines, Dan Patterson will show the impact fatigue and sleep deprivation can have on EMS personnel and their patients, with fatigue linked to the deaths of EMTs, paramedics, and patients. He will teach you how to effectively manage fatigue and sleep deprivation to reduce risk and negative outcomes.

COMMUNITY PARAMEDICINE INITIATIVES IN COMMUNITY HEALTH

NREMT CATEGORY: OPERATIONS

Michael Wilcox, MD, FACEP, FAAFP, Medical Director and Owner, WGH Group, LLC

Learn about multiple applications of Community Paramedicine, with a focus on CP for geriatric and special needs care in skilled nursing facilities, assisted living facilities, hospice units, and adult day care units. Also learn how CP can be used in penal institutions to help provide primary care, assist with mental health/chemical dependency initiatives and help prevent after-hours transport to EDs/ Urgent Care centers for problems that are not true emergencies. You'll also learn the importance of sharing data with other HC facilities via the EMR.

CONFERENCE SESSIONS

COMPLICATIONS! CASES OF PATIENT DETERIORATION

NREMT CATEGORY: MEDICAL

Kevin Collopy, Clinical Outcomes Manager, AirLink/VitaLink Critical Care Transport

While complications and patient deterioration don't always mean someone made a mistake, it's easy for a provider to doubt their own care after the complication occurs. This lecture discusses several interventions, known complications, and their evidence-based frequency. Kevin Collopy will present actual cases where things went wrong: hypotension following RSI, intracerebral hemorrhage following fibrinolytics, and respiratory arrest following analgesia and sedation, and tell you how the involved providers managed their patients' complications and how structured support was provided to help support the involved crew members improve future care delivery.

EMERGING ISSUES FOR WOMEN IN FIRE & EMS SERVICE

NREMT CATEGORY: OTHER

Angela Hughes, President, International Association of Women in the Fire & Emergency Services, Fire Captain, Baltimore County Fire Dept.

This session will provide attendees with an understanding of the specific issues threatening the health and safety of women in emergency services and will offer strategies to reduce fatalities and injuries among responders with a focus on women's issues. The presentation is based on a study funded by the USFA, led by iWomen and in partnership with several fire service organizations. Key issues covered in the session include Fatalities/Injuries; Cardiac health; Cancer; Behavioral Health and Suicide; Bullying; Recruitment and Retention; Apparatus Safety; and Roadway scene safety. Each topic covered includes strategies, solutions and materials to assist with best practices.

THE EMPLOYEE ENGAGEMENT JOURNEY

NREMT CATEGORY: OTHER

Alan Schwalberg, EMT-P, Vice President, Northwell CEMS

James Jackson, Regional Director of Operations, Northwell Health System

Jonathan Washko, MBA, NRP, AEMD, Assistant Vice President of Operations, Northwell CEMS

Learn about Northwell (NY) Health's Center for EMS' 5-year journey to improve employee engagement, recruitment and retention. These industry leaders will share the practices, techniques and lessons learned that took their High Performance EMS organization to a top tier cultural performer that other organizations are now adopting.

EVALUATING AND INTERPRETING EMS RESEARCH

NREMT CATEGORY: OPERATIONS

Michael Gerber, MPH, NRP, Paramedic, Bethesda-Chevy Chase Rescue Squad

Reading peer-reviewed research can often feel like trying to decipher code: odds ratios, p-values, confounders, etc. Yet, it's vitally important that you understand how a study was designed, what the results mean, and whether or not it will or should impact our clinical practice or daily operations. Michael Gerber will use examples from recent EMS research, teach you a simple six-step method to use when you read a research study and how to incorporate those findings in your own practice.

FROM A VISION TO REALITY: EMS AGENDA 2050

NREMT CATEGORY: OTHER

Jon Krohmer, MD, FACEP, Director, OEMS, NHTSA
Mike Taigman, MA, Improvement Guide, FirstWatch

Learn how to create a people-centered EMS system with input from hundreds of members in the Fire First Response, EMS providers and the public. A vision has been created of emergency response systems that are inherently safe and effective, integrated and seamless, reliable and prepared, socially equitable, sustainable and efficient, and adaptable and innovative. Learn all about EMS Agenda 2050, what it can/will mean for your agency and how you can join the conversation.

HOW THE HOUSTON FIRE DEPT. ACCOMPLISHED RESCUES & CARE DURING HURRICANE HARVEY

NREMT CATEGORY: OPERATIONS

Chris Souders, MD, Associate Medical Director, Houston Fire Dept.
Sundown Stauffer, Firefighter/Paramedic, Houston Fire Dept.
Thomas Pierrel, Engineer Operator Paramedic, Houston Fire Dept.

Houston Fire Department firefighter/paramedics and Associate Medical Director, Chris Souders will detail important aspects about how the Houston Fire Department managed the obstacles presented to them by Hurricane Harvey and rescued 122,331 people (and 5,234 pets); managed a 40% increase in calls for service; and provided medical support for 42,000 people spread out in 692 shelters when 33 trillion gallons of water fell on their city. They will detail how HFD used technology, social media resources such as Twitter and reddit and lessons learned from previous floods to be successful when the flood waters hit.

IMPLEMENTING LIVE VIDEO RECORDING IN THE CLINICAL ENVIRONMENT

NREMT CATEGORY: OTHER

Paul Gowens, FCPA, MSc, AASI, PGCert, DipIMC, RCSEd, MCMI, Vice Chair College of Paramedics, Scottish Ambulance Service

Video is becoming common, particularly in simulation and educational settings. However, recording live episodes of clinical care is far less routine. Clinicians are faced with considerable ethical, legal and data protection challenges that present barriers for services that pursue video recording of patient care. Learn core implementation issues that need to be addressed if video is to become part of routine care delivery with a focus on staff acceptability, departmental culture and organizational readiness. Scotland's, Paul Gowens, will provide a roadmap that can be adapted by agencies seeking to utilize video recording as an approach to improving clinical care.

PENETRATING TRAUMA 2019

NREMT CATEGORY: TRAUMA

Edward Dickinson, MD, NRP, FACEP, Professor of Emergency Medicine, Perelman School of Medicine, University of Pennsylvania

JEMS Medical Editor, Ed Dickinson, will review the fundamentals of ballistic injuries and the science and operationalization of interventions and how prehospital management of penetrating trauma has changed significantly. He will focus on hemostatic agents, tourniquets, non-EMS transports, permissive hypotension, junctional bleeding control devices, TXA and prehospital transfusions that now allow us to deliver more penetrating patients alive to definitive care.

PREPARING YOUR PERSONNEL FOR UNEXPECTED STREET VIOLENCE

NREMT CATEGORY: OPERATIONS

Robin Davis, NRP, Assistant Chief, EMS Operations, Sterling Rescue Squad

Traditional scene safety classes and staging policies are not doing enough to prepare our crew members to prepare for the surge in violence against them. Hands-on self-defense training, while helpful, teaches perishable skills. Robin Davis will make you look at your personal barriers to safety, learn strategies to break down these barriers and develop a survival mindset that can save your life.

CONFERENCE SESSIONS

PREVENTING EMS LEGAL FIRES

NREMT CATEGORY: OTHER

John Murphy, JD, Attorney at Law, Murphy Law Group

Organizations are continually under the threat of litigation from the public and at times our own firefighters, EMT's, staff or their families, with failure to administer a policy, stop discriminatory behavior, applying a faulty technique or tactic coupled with outdated policies resulting in litigation. Learn high risk legal issues facing your organization and the need to develop specific and general policies including anti-discrimination and anti-harassment. How adequate documentation is used as a cornerstone of a legal defense will be discussed along with need for a strong driver education program and the 1st Amendment, freedom of speech and social media, and how it affects your organization.

TACKLING THE TOUGH HIPAA AND PATIENT PRIVACY ISSUES

NREMT CATEGORY: OPERATIONS

Steve Wirth, Esq., EMT-P, JD, Attorney at Law, Page, Wolfberg & Wirth LLC

We have a legal obligation to protect patient information - even in the emergent setting when it is often difficult to control. Learn specific HIPAA rules about what can be shared with others without the patient's authorization and the rules to follow with requests for "protected health information" (PHI): from various sources. Steve Wirth will also discuss proper access to PHI - the concept of "role-based access" - and the use of PHI in QI activities.

THURSDAY, FEBRUARY 21, 2019

8:30 AM – 9:30 AM

COPING WITH THE UNPLEASANT EMOTIONS

NREMT CATEGORY: MEDICAL

Annette Hill, MC, LPC, NCC, Licensed Professional Counselor, The Journey of Me, LLC.

Come learn anxiety-reduction tools you can use anywhere from a certified therapist and Gold Star Mom who has assisted veterans and first responders struggling with substance use, PTSD, grief/loss and moral injury. Also learn how to understand the purpose and logic of intense emotions and the purpose they serve for survival and learning, the natural emotions that intrude on responders and what it means when they cannot contain their emotions. This session will also address the purpose behind chaos, help you understand emotional bias and baggage, judgements and expectations, and help you understand how you can cope when you are off the clock.

CUTTING EDGE FIRST LINE AIRWAY MANAGEMENT: MULTIPLE WAYS THE EMT CAN MAKE A DIFFERENCE

NREMT CATEGORY: AIRWAY, RESPIRATORY, VENTILATION

Andrew M. McCoy, MD, MS, Dept. of Emergency Medicine, University of Washington, Shoreline Fire Dept., American Medical Response Puget Sound Operations

This lecture will outline best practices in BLS airway management. Dr. Andrew McCoy will present topics such as how to optimize bag-mask ventilation; use of airway adjuncts including oral airway and nasopharyngeal airway; BLS end-tidal capnography; BLS positive pressure non-invasive ventilation; and PEEP as a BLS adjunct. After attending this insightful session, attendees will be able to describe appropriate methods and their rationale for BLS airway management.

DEBRIEFING THE CALL: GETTING THE MOST OUT OF STUDENTS, INTERNS AND MENTEES

NREMT CATEGORY: OTHER

Duane Tenney, BS, NRP, NCEE, Lieutenant, Fairfax County Fire and Rescue Department

Do you have a conversation with your student, intern or mentee after every EMS run? This session will teach you how to use proven techniques to get the conversation started and engage your personnel. Learn how to dial in and focus on improving their performance and keeping them on an upward trajectory of learning. From the newly certified to the newly hired person in your system, these techniques will help you debrief EMS calls.

DEVELOPING A NEW CLINICAL RESPONSE MODEL FOR THE SCOTTISH AMBULANCE SERVICE

NREMT CATEGORY: OTHER

Paul Gowens, FCPara, MSc, AASI, PGCert, DiplIMC, RCSEd, MCMI, Vice Chair College of Paramedics Scottish Ambulance Service

This presentation will discuss a project aimed at objectively reviewing the Scottish Ambulance Service's clinical response model. The new model now allows for a re-categorization of patients based on their clinical need, matching the right response, resource and skill to deliver best care on scene, and consider their onward pathway need. The two main stages of the project will be discussed: 1) Developing the methodology and framework to objectively review each dispatch code; and 2) Piloting the new clinical response model.

DIFFICULT ETHICAL CHALLENGES IN PREHOSPITAL MEDICINE: A CASE STUDY REVIEW

NREMT CATEGORY: MEDICAL

*Jared Ross, DO, FF/EMT-T, EMS Fellow, Washington University in St. Louis
Keith Wesley, MD, Medical Director, HealthEast Medical Transportation*

Applying medical ethics to dynamic situations can be especially challenging. Between suicidal patients, unclear "Do Not Resuscitate" orders and patients who may lack decision making capacity, doing what's right for the patient may not always be straightforward. This session, using actual case studies, will present the four pillars of medical ethics, teach you a method for rapidly approaching emergency ethical problems and three tests to evaluate new ethical dilemmas.

DISRUPTIVE STRATEGIES FOR REVOLUTIONIZING CARDIAC ARREST SURVIVAL

NREMT CATEGORY: CARDIOVASCULAR

Joseph Ornato, MD, Professor & Chairman, Dept. of Emergency Medicine, Virginia Commonwealth University

Dr. Joseph Ornato, one of the world's leading researchers, will present a detailed roadmap of what will soon be in store for resuscitation. He will present several breakthrough strategies and technologies that are on the horizon with the high potential to dramatically reduce unwitnessed events; speed up EMS dispatch; enhance bystander CPR rates and early bystander AED application; and enhance short- and long-term survival with critical organ protection.

EMERGENCY PATIENTS PAST, PRESENT, & FUTURE

NREMT CATEGORY: OTHER

James Augustine, MD, FACEP, Chairman, National Clinical Governance Board, USACS

This exceptional data talk, based on the ED Benchmarking Alliance Annual Data Survey, along with the annual CDC Report on ED patients will educate you on what the data shows, introduce you to trends in emergency care utilization in America, and the likely future use of emergency services. Dr. Augustine will then help you plan for patients who will be served by prehospital and MIH providers in the future.

CONFERENCE SESSIONS

FireCARES: EMS RISK ANALYSIS USING BIG DATA

NREMT CATEGORY: OTHER

Tyler Garner, Vice President and Chief Software Engineer, International Public Safety Data Institute

FireCARES, is a “big data” analytical system that provides provide the basis of EMS risk assessment and performance metrics for U.S. fire departments; important information for fire service and community leaders about their department and the risk environment in which firefighters are called to respond. It “tells the story” of a fire department regarding its risk environment, resource capacity, and overall capability to respond to emergency incidents and includes more than a decade of research on structure fires and related injuries and death, as well as building footprints, housing units, public health and census data, and locations of vulnerable populations. This program raises the bar for the technical discussion of community hazards and risks, and the impact of changes to fire department resource levels.

HOW A RURAL COMMUNITY PARAMEDIC PROGRAM FOUND SUCCESS

NREMT CATEGORY: OTHER

Joshua Holloman, EMS Division Chief, Johnston County Emergency Services

Learn how a rural community paramedic program was created with partnerships from Public Health, the local hospital system and the County EMS System. Because of great partnerships, the program received a special award from the North Carolina Public Health Association, achieved several successful patient outcome measures and achieved sustainable funding. Learn how these important partnerships were created and enhanced, how goals were made and achieved and how education has been provided that has led to great outcomes for this rural community.

IDENTIFYING LARGE VESSEL OCCLUSION STROKES

NREMT CATEGORY: CARDIOVASCULAR

Eric Cortez, MD, Clinical Assistant Professor of Emergency Medicine, Ohio Health Doctors Hospital

The utility of mechanical thrombectomy for large vessel occlusions has been confirmed and emergency responders are now being tasked with identifying large vessel occlusions and making tough transport decisions based on their findings. This session will present the recent updates to stroke literature, including the expanded time frame for mechanical thrombectomy and discuss important considerations when making transport destination decisions and various prehospital large vessel occlusion scores available.

INCORPORATING NON-GOVERNMENT BASED EMS ORGANIZATIONS INTO HIGH THREAT INCIDENTS

NREMT CATEGORY: OPERATIONS

Moderator: *John Montes, NREMT, Emergency Services Specialist, NFPA*

Speaker(s): *Ed Racht, MD, Chief Medical Officer, American Medical Response, Associate Chief Medical Officer, Evolution Health*

Glen Simpson, BS, AEMT, TECC Instructor, Director of Special Operations, Community Ambulance

Jamie Pianka, Chief Operating Officer, Pro EMS

Come learn how to incorporate private, non-government-based EMS organizations into high threat response planning for incidents that are on the rise. Learn the many challenges and how there may not be equal protections and an increased risk for private organizations. Each panelist will give some examples of how their organizations have faced these challenges and their innovative solutions based on real events.

NAVIGATING THE LEGAL, REGULATORY AND SYSTEMS DEVELOPMENT LANDSCAPE

NREMT CATEGORY: OTHER

Steve Wirth, Esq., EMT-P, JD, Attorney at Law, Page, Wolfberg & Wirth LLC

We are in a turbulent ocean of EMS development with a high level of unpredictability as we face more challenges than ever before that we must survive. To do so, we need to “thrive” amidst this turbulence to advance EMS in our communities. EMS attorney Steve Wirth will identify the top legal, regulatory, and system design issues that will be the catalysts for change into the future and discuss critical operational, financial, regulatory, public relations, and human resource challenges. He will present strategies for minimizing the impact of these issues and discuss how to best navigate these issues.

AN OVERVIEW OF THE CHANGING ROLES OF EMS IN COMBATING TERRORISM WHILE OPERATING IN HOSTILE ACTIVE SHOOTER/TERRORIST ENVIRONMENTS

NREMT CATEGORY: OPERATIONS

Geoffrey Williams, QFSM, ChFI, CIETecRI, MIFireE, Retired Principal, Chief Fire and Rescue Officer, Scotland, UK

Paul Schuller, Battalion Chief (R), San Jose Fire Dept.

This session will detail the changing roles of EMS delivery during active shooter or terrorist attacks and explain the implications of new ‘offensive’ roles to the EMS first responders, particularly essential safety requirements for each level of management. You’ll learn how cutting-edge practices and procedures can be applied while operating in ‘Terrorist induced Hostile Environments’, which can also enhance the roles and relations of Labor and Management.

SETTING UP YOUR QUALITY PROGRAM FOR PERFORMANCE IMPROVEMENT

NREMT CATEGORY: OTHER

Brooke Burton, NRP, FACPE, Quality Director, Gold Cross Ambulance

This informative session will illustrate how anyone can propose and contribute to improvement in addition to retrospective chart review. Learn the basic concepts of performance improvement, how data can easily be turned into improvement projects and how to replicate the process for your agency. Participants will:

- Learn basics of EMS data collection and how to visualize and analyze data
- Learn the basic concepts of improvement science (PDSA Cycles)
- Understand the process of data collection in EMS, where it goes, and how it’s used
- Apply the principals of performance improvement process from the IHI
- Create a basic performance improvement idea and analyze and evaluate in a group setting

SURVIVING PTSD – WITH EMS AS MY LIGHT IN THE DARKNESS

NREMT CATEGORY: OPERATIONS

Stefanie Miller, A-EMCA, Owner/CEO, Stefanie Speaks, Paramedic, BRANT/Brantford Paramedic Service/ Stefanie SPEAKS

Ontario, Canada, medic Stefanie Miller, will tell you how she wore a “mask” - afraid of what others would think, how stigma was holding her back, and how she suffered silently for seven years, formally diagnosed with PTSD, but then found strength and comfort in paramedicine. Come hear her amazing success story about how she has been able to work through most of her PTSD, as a wife, mother, successful paramedic and now serves as a motivational speaker to improve resiliency and provider well-being.

CONFERENCE SESSIONS

THURSDAY, FEBRUARY 21, 2019

10:00 AM - 11:00 AM

ALL THAT WHEEZES

NREMT CATEGORY: AIRWAY, RESPIRATORY, VENTILATION

Keith Wesley, MD, Medical Director, HealthEast Medical Transportation

Respiratory emergencies are common in EMS. Understanding their pathophysiology better will prepare you to deal with them. This lecture will reinforce your knowledge of the respiratory system and integrate it with a common-sense approach to respiratory distress. The basic pathophysiology for asthma, COPD, and heart failure will be reviewed along with tips for distinguishing the various conditions. The role of capnography and lung sounds will also be stressed along with the use of CPAP and inhaled medication for their treatment.

DEALING WITH UNLAWFUL HARASSMENT IN THE WORKPLACE

NREMT CATEGORY: OTHER

Steve Wirth, Esq., EMT-P, JD, Attorney at Law, Page, Wolfberg & Wirth LLC
W. Ann Maggione, JD, NRP, Attorney/Paramedic, Butt, Thornton & Baehr, P.C.

The increasing number of sexual harassment and sexual assault cases should be a wakeup call for all agencies. It's time to re-evaluate a central leadership responsibility - establishing a culture that prevents and effectively responds to unlawful harassment. The presenters will take a critical look at sexual harassment cases and provide the answers you need to reduce your potential liability and describe the 5 key things that make agencies more prone to sexual harassment than other organizations. You'll learn the critical "Do's and Don'ts" of handling unlawful harassment in the workplace and critical tips to conduct thorough and impartial investigations.

DEVELOPING YOUR OPIOID ARMY

NREMT CATEGORY: OTHER

Simon Taxel, NRP, BA, Crew Chief, City of Pittsburgh Bureau of EMS

The opioid epidemic requires a coordinated response from a variety of stakeholders. Because EMS has significant access to community members who suffer from addiction, we have an opportunity to provide care and outreach beyond tending to patients who have overdosed. Come learn how the City of Pittsburgh Bureau of EMS partnered with multiple organizations to develop a harm-reduction strategy to reduce the number of opioid related deaths and connect addicted patients to recovery services.

EMS DRILLS FOR THE ENGINE COMPANY

NREMT CATEGORY: OTHER

Brian Pond, EMT-P I/C, Training Officer, Standish (ME) Fire/EMS

This lecture will give fire service training officers and company level officers the tools needed to create a competent and enthusiastic environment during EMS responses. You'll learn a training evolution that can be used throughout the year with career and volunteer firefighters and drills that will challenge the most seasoned members of your department.

THE EVOLUTION OF THE RICHMOND EMS SYSTEM

NREMT CATEGORY: OTHER

Ed Racht, MD, Chief Medical Officer, American Medical Response, Associate Medical Officer, Evolution Health

Jay Fitch, PhD, Founding Partner/President, Fitch & Associates, LLC

Joseph Ornato, MD, Professor & Chairman, Dept of Emergency Medicine, Virginia Commonwealth University

Richmond, Virginia's EMS system is one of America's most clinically-advanced and operationally-innovative systems. However, several decades ago, failure of this system was imminent, with competing ambulance services, medical politics, fights with fire agencies, new state legislation, and lawsuits all part of its history. Three EMS industry icons will share how political waters were navigated and provide insight about key factors that continue to move the system forward.

THE FIVE COMMON CAUSES OF SUDDEN DEATH EVERY EMS PROVIDER SHOULD KNOW

NREMT CATEGORY: MEDICAL

Jared McKinney, MD, Medical Director, LifeFlight Event Medicine, Associate Professor, Vanderbilt University Medical Center, Associate Medical Director, Nashville Fire Department

This fast-paced and informative lecture will focus on five common causes of sudden death and how you can better gain clues pre-arrest, provide emergency care and modify your resuscitations in light of the likely etiology. The five topic areas featured will be AMI, potentially fatal arrhythmias, massive CVA, pulmonary embolus and aortic catastrophes.

HOW COMMUNICATION TECHNOLOGIES WILL HELP IMPROVE EMS PATIENT CARE

NREMT CATEGORY: OTHER

Barry Luke, Deputy Executive Director, National Public Safety Telecommunications Council
Dia Gainor, MPA, QAS, Executive Director, NASEMSO

Jon Krohmer, MD, FACEP, Director, OEMS, NHTSA

Laurie Flaherty, Coordinator, National 911 Program, National Highway Traffic Safety Administration

Michael Jacobs, EMT-P, Manager, Specialty Systems of Care, Alameda County EMS

Learn about the massive effort is underway to revamp the digital communication infrastructure that serves public safety, from Next Generation 911 to the FirstNet public safety broadband network, with providers gaining benefits from dispatchers who will be able to provide more detailed data, such as improved patient location accuracy and access to pre-arrival digital data including video, vehicle telemetrics and patient monitoring devices. This session will help you understand how these new systems will allow agencies to provide better patient care.

HURRICANE HARVEY'S IMPACT ON THE THIRD LARGEST COUNTY IN THE USA

NREMT CATEGORY: OTHER

Justin Reed, NRP, BS, Assistant Chief - EMS, Cy-Fair Volunteer Fire Department

Rodney Reed, M.S., Assistant Chief, Harris County Fire Marshal's Office

Hurricane Harvey devastated 40 counties throughout the Texas Gulf Coast. While many have heard of the challenges faced by emergency responders in the City of Houston, this presentation will detail Harvey's impact on Harris County Texas, the third largest County in the nation This powerful presentation will provide you with a walk-through of the events leading up to Harvey and the lessons learned by Harris County Fire, EMS, and Public Safety Answering Points. The lessons they learned will help you ensure that your jurisdiction is better prepared for a similar disaster.

INSIDE OUT: RECOGNIZE AND MANAGE MENTAL HEALTH IN PATIENTS

NREMT CATEGORY: MEDICAL

Ann Payne, MB, BAO, BCh, MRCPsych, MA (CBT), FFSEM, Doctor, St Stephen's Hospital, Cork, Ireland

Dr. Ann Payne, a Consultant Psychiatrist and clinical lead in Ireland will teach you how to recognize, manage serious mental health disorders and deal with crisis encounters through actual clinical scenarios. She will lead a demonstration where you will interview and interact with each other in educational role play. You'll focus on communications (verbal and nonverbal) and collectively debrief after each case. Dr. Payne will also teach you ways to recognize when a co-worker slides into difficulty and when to reach out to them to offer help.

CONFERENCE SESSIONS

MAJOR CHEST TRAUMA

NREMT CATEGORY: TRAUMA

Babak Sarani, MD, FACS, FCCM, Professor of Surgery & Emergency Medicine, George Washington University

This session will utilize a problem-based analysis to review the initial assessment and management of major chest and chest wall trauma. Topics that will be covered include: hemo/pneumothorax, flail chest, pulmonary contusion, pericardial tamponade, and blunt cardiac injury. The session will start with a description of care that should be started in the field and include the types of interventions performed upon arrival to the hospital to give the medic a complete understanding of how to care for these injuries.

MANAGING WITHDRAW PATIENTS IN THE PREHOSPITAL SETTING

NREMT CATEGORY: MEDICAL

Gerald Maloney, DO, Associate Chief, Emergency Department, Cleveland VA Medical Center

While most providers are familiar with alcohol and opiate withdrawal, other syndromes, such as benzodiazepine, gabapentin, and GHB withdrawal are now being seen with increasing frequency. This lecture will present the clinical presentation, pathophysiology, and management of the most important types of withdrawal and review cutting-edge treatment and controversies.

RECRUITMENT & RETENTION: DEVELOPING YOUR GAME PLAN

NREMT CATEGORY: OTHER

Candice McDonald, Firefighter/PIO/Former EMS Officer, Sebring & Winona Fire Dept.

Volunteer agencies are experiencing challenges with recruitment and retention of personnel. This lecture will outline how to recruit and retain personnel for their agency - based on a three-year doctoral study on retention - and offer research-based/proven strategies to reduce turnover and increase recruitment among all generations of volunteers. You'll learn strategies to help overcome the biggest barriers to retention and recruitment, that will allow you to draft a personalized plan to increase and maintain members.

RESPONDING TO VETERANS AND SERVICE MEMBERS IN CRISIS

NREMT CATEGORY: MEDICAL

Annette Hill, MC, LPC, NCC, EMDR-certified therapist,

Dean Pedrotti, Captain/Paramedic, Phoenix Fire Department (ret.), Arizona Coalition for Military Families

As crisis calls involving combat veterans continue to increase, it's essential for first responders to become familiar with the issues facing veterans and the symptoms of PTS, TBI and moral injury to better assist them during any interaction and identify community resources to assist them in obtaining follow-up behavioral health care. It is reported that up to 20% may be affected by post-traumatic stress disorder and another 19% may develop traumatic brain injury (TBI). This powerful session will help you deal with this important patient population.

REVOLUTIONIZING DOCUMENTATION TRAINING, OUT WITH THE OLD AND IN WITH THE NEW

NREMT CATEGORY: OTHER

Kerby Johnson, Medical Records Coordinator, MedStar Mobile Healthcare

With NEMSIS Version 3 becoming the standard for pre-hospital data collection arena, this lecture will show how one organization is setting a new standard for documentation expectations and training by embracing the new NEMSIS requirements and making training highly interactive through hands on experience in a simulation lab, teaching almost entirely without Power Point, and keeping the students engaged. You will learn how MedStar teaches first responders, EMT's, and Medics to re-frame their mindset, views, and documentation practices.

UTILIZING QI CHART REVIEW TO GUIDE CE

NREMT CATEGORY: OTHER

Marcus Allen, EMT-P, Training Supervisor, Mercy Flights Inc.

This lecture will illustrate the treasure trove of CE topics that can be gathered by analyzing run reports and how Training Officers and Medical Directors can work together to meet agency CE needs. Learn how chart review can be used to discover challenges with assessments, interventions or protocols can offer a variety of training topics to keep crews engaged.

THURSDAY, FEBRUARY 21, 2019 – SUPER SESSIONS

2:00 PM - 3:30 PM

ACTIVE SHOOTER & HOSTILE EVENT RESPONSE FOR HIGH PROFILE TARGET HAZARDS

NREMT CATEGORY: OPERATIONS

Ofer Lichtman, NRP, Terrorism Liaison Officer Coordinator, Rancho Cucamonga Fire District FBI Joint Terrorism Task Force San Bernardino / Riverside

Warm zone EMS for first responders is now the acceptable standard now that NFPA 3000 is out, and many agencies are training for it. But you must also train and prepare your schools, citizens and other target hazards to be able to respond. This lecture will teach you how to approach, prepare and educate your citizenry in schools, businesses, churches and other target hazards and identify hazards and threats to facilities, hardening target hazards and have citizens responding to assist you when an event occurs.

A COLLABORATIVE APPROACH TO IMPLEMENTING AND IMPROVING COMMUNITY MOBILE INTEGRATED HEALTHCARE PROGRAMS

NREMT CATEGORY: OTHER

Moderator: *Michael Baker, MA, BUS, NRP, Chief of EMS, Tulsa Fire Department*

Panelist(s): *Brian Schaeffer, Fire Chief, Spokane Fire Department*

Malachi Winters, Paramedic, FP-C, Program Manager, Sedgwick County Public Safety

Selia Moya, Clinician/Co-Responder, EMS Community Outreach, Johnson County MED ACT

Learn how a diverse group of emergency providers created a connected network to collaborate on both the shared and unique aspects of their mobile integrated healthcare (MIH) programs, the result of which was a unique opportunity to share information and experiences among new and emerging MIH programs. Learn how they found common ground through the shared discussion of data collection issues, utilization of social workers, seeking sustainable funding, and many other elements of community healthcare.

CONFERENCE SESSIONS

IS IT TIME TO COMPETE, COOPERATE, SELL OR CONSOLIDATE?

NREMT CATEGORY: OTHER

Moderator: Jonathan Washko, MBA, NRP, AEMD, Assistant Vice President of Operations, Northwell Center for EMS

Panelist(s): Bill Atkinson, Ph.D., Dr.Sc(h), MPH, MPA, EMT-P, FACHE, FACPE, President, Guidon Healthcare Consulting

Lou Meyer, President, LKM & Associates

Robert Nadolski, BS, NREMT-P (R), Clinical Administrator, Emory Healthcare / School of Medicine

Is it time to? Many EMS systems are facing whether to compete, cooperate, sell or consolidate in our tumultuous and rapidly changing healthcare and reimbursement environment. Come learn from some of the industry's top minds on EMS economic sustainability with over 100 years of collective EMS turn-around experience. They will teach you how to best position your organization for the rough waters ahead.

MAKING THE MOST OUT OF PEDIATRIC SIMULATIONS

NREMT CATEGORY: OTHER

Moderator: Fran Hildwine, BS, NRP, AHA Training Center Program Coordinator, Nemours, A.I. duPont Hospital for Children

Panelist(s): Christine Bailey, Clinical Nurse Educator, Neumours, AI DuPont Hospital for Children
Grace Good, Simulation Educator, Children's Hospital of Philadelphia

John Erbayri, MS, NRP, CHSE, Emergency Care Program Manager, Children's Hospital of Philadelphia

Managing pediatric patients can be scary, but designing a pediatric simulation doesn't have to be! Paramedics and RNs who staff the training centers from two renowned pediatric hospitals will provide you with a comprehensive way to develop pediatric simulations to meet your learning objectives—and with the equipment that you already have.

PREPARING A CAPABILITY DEVELOPMENT PLAN: THE MARYLAND NATIONAL CAPITAL REGION EXPERIENCE

NREMT CATEGORY: OPERATIONS

Michael McAdams, Program Manager, Planning & Organizational, Maryland National Capital Emergency Response System

Phil Raum, Program Manager, Training & Exercise, Maryland National Capital Region Emergency Response System

Dwight D. Eisenhower said, "In preparing for battle, I have always found that plans are useless, but planning is indispensable." Today's fire-based EMS environment demands that leaders plan for all-hazards incidents and provide resources for active violence incidents, community health programs and be agile to meet local needs. Leaders need an efficient planning process that identifies vulnerabilities, delivers a step-by-step path to make a change, and the metrics to demonstrate results. This session will teach you how to do so and build a capability using tasks, activities, and benchmarks and apply them into the Capability Development Planning process.

REIMAGINING AND ENGINEERING AIRWAY MANAGEMENT IN EMS SYSTEMS

NREMT CATEGORY: AIRWAY, RESPIRATORY, VENTILATION

Curtis Knoles, MD, FAAP, Assistant Medical Director, Medical Control Board, EMS System for Metropolitan Oklahoma City and Tulsa

David Howerton, BS, NRP, EMT-T, Director of Clinical Affairs - Western Division, Office of the Medical Director, EMS System for Metropolitan Oklahoma City and Tulsa

Jeffrey M. Goodloe, MD, NRP, FACEP, FAEMS, Medical Director, Medical Control Board, EMS System for Metropolitan Oklahoma City and Tulsa

Suction, BVM, Intubation. Done. Airway Managed. Right? Come learn a refreshing new approach to airway management. This panel will encourage you to assume nothing, question everything, throw lots of things to of your airway bag and learn new solutions to the important oxygenation/ventilation physiology needs of your patients. This dynamic discussion will present the results of a year-long adventure in discovery, leveraging the wisdom of all levels of credentialed EMS professionals to advance the art AND science of airway management.

THE SPARK

NREMT CATEGORY: OTHER

Ryan "Birdman" Parrott, Former Navy SEAL, Founder/President, Sons of the Flag

Along each of our journeys in life, we tend to gravitate towards something that we can put our entire heart and soul into with a calling to serve others. This is the greatest gift we could give one another. During this lecture, Ryan "Birdman" Parrott, Former Navy SEAL will lead you down his journey and his calling to serve, capturing the one thing that drives us all to be elite: THE SPARK!

STATE OF THE ART AND SCIENCE OF HEAD UP CPR

NREMT CATEGORY: CARDIOVASCULAR

Beach Fire Rescue Departments (FL), Chair, Palm Beach County EMS Medical Directors Association

Keith Lurie, MD, Minnesota Resuscitation Solutions

Kenneth Schepke, MD, EMS Medical Director, Palm Beach County, Boynton Beach and West Palm

Michael Jacobs, EMT-P, Paramedic/Manager, Specialty Systems of Care, Alameda County EMS

Sean Grayson, MS, EFO, CFO, MIFireE, Fire Chief, Rialto Fire Department

Hear experts in resuscitation science discuss the physiology of CPR and introduce the latest addition to the bundles of cardiac arrest care: Head Up CPR. They will explain how and why Head Up CPR works, the do's and don'ts of Head UP CPR implementation, best practices for performing Head Up CPR and amazing resuscitation results being realized by systems that have integrated Head Up CPR in the "bundle of care" in their systems.

STREETSENSE: MASTERING CRISIS COMMUNICATIONS

NREMT CATEGORY: OPERATIONS

Kate Dernocoeur, WEMT, FFI&II, MFA, Writer, WinInk

Crews succeed (and fail) at talking to strangers in crisis all the time. Your safety and effectiveness at every emergency scene hinges your ability to "read" the situation and reach into your tool bag for the most appropriate interpersonal communication methods needed at that moment. Kate Dernocoeur will help you pick apart communications and recognize why certain strategies work (or don't work). She will teach you a host of communication tools, from the moment of dispatch through patient hand-off!

VIOLENCE AGAINST RESPONDERS: THE NORTH CAROLINA PORTAL PROJECT BEST PRACTICES

NREMT CATEGORY: OPERATIONS

Donald Garner Jr., BAS, NRP, Deputy Director, Wake County EMS

Jennifer Wilson, BA, EMT-B, Director, UNC Chapel Hill - EMSPIC

Joseph Zalkin, BSHS-EMC, Paramedic, Executive Director, Wake County EMS Foundation

Assault and violent events happen frequently in the prehospital setting. This session will present the North Carolina State Office of EMS and NC Consortium Against Responder Violence two-year journey to survey responders of their perception of these events, create a web reporting portal for actual and near-miss violence events, conduct follow-up investigations and present best practices. Case histories, including educational strategy to both increase awareness and reduce risk to responders, will be presented.

CONFERENCE SESSIONS

FRIDAY, FEBRUARY 22, 2019

8:00 AM – 10:00 AM

THE EAGLES PANEL

NREMT CATEGORY: OTHER

The Major Metropolitan EMS Medical Directors Consortium (“EAGLES”) panelists are some of the nation’s most influential medical directors. In this super session, they will present new trends and controversies in prehospital medicine and allow plenty of time for interactive audience Q & A.

Moderator: *Paul Pepe, MD, MPH, FACEP, MACP, MCCM, FAEMS, University of Texas SW Medical Center Coordinator of the Metropolitan EMS Medical Directors Coalition*

Panelist(s): *Andrew McCoy, MD, University of Washington, Shoreline FD & AMR Puget Sound*
Ed Racht, MD, Chief Medical Officer, American Medical Response
James Augustine, MD, FACEP, Atlanta and Florida Fire/EMS Agencies
Jeffrey M. Goodloe, MD, NRP, FACEP, FAEMS, Metropolitan Oklahoma City & Tulsa
Ken Schepke, MD, Palm Beach County, Boynton Beach & West Palm Beach Fire Rescue
Michael Levy, MD, FAEMS, FACEP, FACP, Anchorage Alaska Fire Dept.
Paul Banerjee, DO, Polk County Florida Fire Rescue

FRIDAY, FEBRUARY 22, 2019

9:00 AM – 10:00 AM

ALTERNATIVE TRANSPORT DESTINATIONS FOR YOUR LOWEST ACUITY PATIENTS

NREMT CATEGORY: OPERATIONS

Alan Butsch, Battalion Chief, MCFRS

Roger Stone, MD, MS, FACEP, FAAEM, FAEMS, Medical Director, Montgomery County MD Fire Rescue, Faculty, Univ of MD School of Medicine, Emergency Medicine MIEMSS Region V Regional Med Director

The reverse specialty center is a new tool in the triad of “right place, in the right time, and for the right care”. Specialty referral centers (SRC) arose as definitive destinations for time-dependent conditions for trauma, MIs and stroke. But on the other end of the spectrum lies a cohort of patients with low acuity disease or injury. This session will address the use of the SRC model to invoke “reverse specialty centers” (RSC), where EMS can choose alternative transport destinations besides hospital for non-time-dependent conditions.

EMS AND TBI: FIELD CARE FOR HIGH-IMPACT TRAUMATIC BRAIN INJURIES

NREMT CATEGORY: TRAUMA

Rommie Duckworth, BS, LP, Captain, Ridgefield (CT) Fire Department

Traumatic Brain Injuries account for 2.5 million annual ED visits, with many patients left with lifelong disabilities, and, sadly, more than 50,000 (33%) don’t leave at all. Rommie Duckworth will teach you how your assessment and care in the first moments after impact can be a major factor in your patient’s outcome. Hyperventilate? Intubate? Permissive hypotension? Using case-studies, evidence-based guidelines and a common-sense approach, Rommie will arm you with strategies for the prehospital management of TBIs that you can use in trauma settings.

ENGAGING & MOTIVATING YOUR STUDENTS, AND YOURSELF

NREMT CATEGORY: OTHER

Kirk Mittelman, M.E.d., NRP, Founder, Mt Nebo Training
Margaret Mittelman, M.E.d., NRP, Professor, Utah Valley University

Have you noticed your staff and cohorts not interacting with the students and each other like they once did? Encouraging others to do better is truly an art form and a constant challenge. Using the "TASKING" mnemonic will help you interact better, stay on task and keep your students enthused and engaged in learning. Learn how to deal with burnout and productivity by you, your staff and the students you serve.

EVENT MEDICINE FOR MASS GATHERINGS: FROM PRESIDENTIAL INAUGURATIONS TO MUSIC FESTIVALS

NREMT CATEGORY: OPERATIONS

Andrew Maurano, PA-C, Director of Event Medicine, Associate Clinical Professor of Emergency Medicine, The George Washington University

Mass gatherings pose threats that can overwhelm your system. This session will review national events, apply a lessons-learned approach to better understand each threat, and discuss the planning principles required to mitigate those threats, including engaging your law enforcement and healthcare partners to medically contain an event. It will also discuss techniques shown to be effective in responding to those threats, reducing EMS transports and producing safer mass gatherings.

EXAMINING THE EMS/HOSPITAL RELATIONSHIP AND HOW TO IMPROVE IT

NREMT CATEGORY: OTHER

Brenden Hayden, System Vice President of EMS, Steward Health Care System
Ronald Audette, EMS Manager, Steward- St. Anne's Hospital

With EMS delivery gaining new prominence in the minds of health system leaders, the once vendor relationship is transforming to one of a partner as EMS touch with the community becomes an asset to hospitals and health systems. This session will provide an overview of what you should expect from your hospitals and health systems through the eyes of a health system EMS leader and hospital EMS leader, perspectives that will help you drive change which will better serve your patients and community.

HOW CHECKLISTS CAN IMPROVE PREHOSPITAL CARE

NREMT CATEGORY: OTHER

Rich Campbell, Medical Director, South County Fire and Rescue Mukilteo Fire Department

Follow a fire department's implementation of an ALS clinical checklist program and learn first hand how clinical care improved. Topics discussed will include the trials and tribulation involving implementation of a practice changing program, key performance indicators, and data support tools. Participants will leave motivated to take the skills they've learned to return to their organizations and implement checklists.

INFECTION CONTROL TRAINING FOR COMMUNITY PARAMEDICINE & MIH

NREMT CATEGORY: MEDICAL

Katherine West, RN, BSN, MSed, Infection Control Consultant, Infection Control Emerging Concepts

Emergency personnel are currently trained in the provision of emergent patient care. But moving into home care practices presents many different issues, responsibilities and the need for specialized training. Come hear infection control expert Katherine West discuss the important aspects of home care of indwelling devices; careful trach and ostomy care; maintaining a patient care record; patient and family instruction; and the assessment of home safety.

NFPA 451: COMMUNITY HEALTH CARE

NREMT CATEGORY: OTHER

John Montes, NREMT, Emergency Services Specialist, NFPA

This presentation will walk the audience through a soup to nuts explanation of the new NFPA 451. It will begin with what is required of an agency that would like to start a community healthcare program and review the components needed to make it happen. The material in the program will be influenced by the membership of the NFPA EMS Technical Committee who developed the guide.

CONFERENCE SESSIONS

NON-INVASIVE VENTILATION

NREMT CATEGORY: AIRWAY, RESPIRATORY, VENTILATION

Mike McEvoy, PhD, NRP, RN, CCRN, EMS Coordinator, Saratoga County, New York

CPAP, BiPAP and High Flow Nasal Cannula (HFNC) are Non-Invasive Ventilation (NIV) tools that save lives. This session will review NIV tools, patient selection criteria, standards of care, assessment, application in the field and transition of care to the ED. Mike McEvoy will review CPAP devices, BiPAP machines, and soon-to-be released prehospital high flow nasal oxygen therapy (HFNC) that will improve patient outcomes and provide tips for better monitoring using capnography.

REDESIGNING YOUR RESUSCITATION APPROACH: THE RIALTO FIRE DEPARTMENT STORY

NREMT CATEGORY: OPERATIONS

Sean Grayson, Fire Chief, Rialto Fire Department

To improve survival where historical outcomes have been poor requires radical innovation. Chief Sean Grayson will show you how his department changed assumptions and envisioned a future where survival is the norm, not the exception, and achieve an 80% cardiac arrest survival rate. His data will show you how, when bench-marking and industry best practices don't yield the desired outcomes, your agency must look to reverse-benchmark instead. Come see how you can apply this and other lessons of innovation leadership in your community.

SPINAL TRAUMA MANAGEMENT: A SKEPTIC EXAMINES THE EVIDENCE

NREMT CATEGORY: TRAUMA

David Dalton, BS, EMT-P, Captain, St. Charles County Ambulance District

Were you skeptical when management of suspected spinal trauma victims began to shift away from the use of long backboards? Having suffered a near-fatal cervical spine fracture himself, David was greatly distressed when his agency announced that the backboard was being removed from the spinal trauma protocol. He set out to learn all he could about the supposed science behind these changes. But instead of finding flaws in the research, he learned that traditional immobilization can contribute to a patient's death; and recent research suggests that even more changes may be on the horizon.

TALES FROM THE STREETS OF CHICAGO EMS

NREMT CATEGORY: OTHER

Deborah Sommer, Assistant Deputy Chief Paramedic, Chicago Fire Dept.

As a 28-year veteran of the Chicago Fire Department Chief Sommer takes you through the streets of Chicago. She will share her experiences with you while working on some of the country's busiest ambulances in the toughest neighborhoods. Learn what experiences shaped her career path from a candidate straight out of the Fire Academy to Chief Officer still working in the field.

VEHICLE EXTRICATION FOR EMS

NREMT CATEGORY: OPERATIONS

Dan Greenhaus, Director of Operations, Emergency Services Educators & Consultants

Cars have changed significantly since the early 20th century. From hybrid vehicles, to SRS systems, to airbag locations, many of these changes are done in the name of efficiency... but as a rescuer, they can pose some serious risks to you. Even if your agency doesn't perform the actual disentanglement, you should be familiar with many of the common practices involved in vehicle stabilization and extrication. After all, extrication and disentanglement is supposed to be a patient care driven process.

WHAT'S NORMAL? THE IMPACT OF A CAREER IN EMS

NREMT CATEGORY: OTHER

Dan DeGryse, BA, BS, CADC, CEAP, LAP/C, CAI, Director, Rosecrance Florian Program, Battalion Chief, Chicago Fire Dept.

EMS exposes us to taxing, disturbing, sometimes heart wrenching events that have a cumulative effect. And stress can develop from relationships, injuries, mental health concerns, suicide, job, family, and financial issues. While we've been trained to handle and mitigate incidents, we need to be able to deal with the short term and long-term effects stress has on us physically, mentally, emotionally, and spirituality. Learn the effects that you can experience, and what you can do to make sure you enjoy a quality of life we deserve.

WHEN LITTLE BONES BREAK

NREMT CATEGORY: TRAUMA

Lisa Drago, DO, FAAP, Assistant Professor of Pediatrics and Emergency Medicine, Cooper Medical School of Rowan University/ Cooper University Hospital

Pediatric bones break in a different manner than adult bones. Lisa Drago will discuss common pediatric fracture patterns and red flags for fractures that may signal child abuse to you. Treating fracture pain in the midst of an opioid epidemic can be challenging. Lisa will also present alternative ways to control pain and assist you in caring for and providing comfort to pediatric patients with fractures.

FRIDAY, FEBRUARY 22, 2019

10:30 AM – 11:30 AM

BE AN ADVOCATE: YOUR ROLE IN CHILD ABUSE CASES

NREMT CATEGORY: OPERATIONS

Derrick Jacobus, MA, FP-C, NREMT, Flight Paramedic/Detective, MidAtlantic Medevac

When you transferred care of young patients to the ED staff, did you ever feel that the story wasn't correct and could have been a case of abuse? Learn how being an advocate for abused children is a critical role you can play. Derrick Jacobus, a flight paramedic with a law enforcement background, will present actual cases from a special victim's detective who specializes in crimes against children and show you how important you can be in the prosecution of abusers.

CHEMICAL WEAPONS AND THEIR IMPACT ON CIVILIAN EMS

NREMT CATEGORY: TRAUMA

*Mark Kirk, MD, Director Chemical Defense, DHS Countering Weapons of Mass Destruction
Randy G. Stair, MA, BSN, RN, NRP, Supervisory Emergency Services Specialist, United States Secret Service*

In light of recent incidents around the world involving chemical and nerve agents, this presentation will discuss current trends and important information needed by responders to properly recognize, respond, and treat patients in these environs. Updates to patient care and clinical implications will also be identified.

COORDINATING RESCUE CARE FOR CRUSH INJURY & CRUSH SYNDROME

NREMT CATEGORY: TRAUMA

Rommie Duckworth, BS, LP, Captain, Ridgefield (CT) Fire Department

Patients pinned in a car for an hour, trapped in a building collapse for 6 hours, or immobilized in a rescue harness for 10 minutes can experience different, but deadly aspects of crush injury, crush syndrome, rhabdomyolysis or suspension trauma. Learn why some victims are okay when trapped, but die after extrication. Rommie Duckworth will present actual case-studies to explain this phenomenon and present evidence-based best practices, model protocols and resources that you can use to treat these high-pressure and high-profile patients.

CONFERENCE SESSIONS

EFFECTIVE EMS LEADERSHIP

NREMT CATEGORY: OTHER

Stephen Marsar, Battalion Chief, Fire Dept., City of New York

Want to improve your communication skills to connect with your personnel? This dynamic session will offer the Power and Pitfalls of effective EMS Officer management skills and provide real-world scenarios. Utilizing an interactive exploration of the commonalities and differences between Management and Leadership ideals will allow you to apply what you learn. This is a must for members interested in moving up in the EMS ranks.

EXPLOSIVES LETHAL TRIAD OF TRAUMA

NREMT CATEGORY: TRAUMA

Jarred Alden, M.A., NRP, Lieutenant, The Akron Fire Department

Become exposed to the explosives used in terrorist events in the past and present, from commercial explosives to homemade explosives. Detonation velocities will be discussed along with confinement, reflective surfaces and IED components. Videos will illustrate the destructive nature of bombs and various blast stages and the associated injuries will be introduced to focus on distance, time, and shielding. You'll also learn what is being used today by terrorist organizations to increase the lethality of the IED and proper treatment procedures.

FROM 0 TO 35% SURVIVAL: NEW ADVANCES IN PEDIATRIC RESUSCITATION

NREMT CATEGORY: CARDIOVASCULAR

Lisa Correll, B.A., EMT-P, Captain-Training Officer, Office of Medical Direction, Polk County Fire Rescue

Paul Banerjee, DO, Medical Director, Polk County Fire Rescue

Raf Vittone, Deputy Chief Emergency Services, Polk County Fire Rescue

Come learn how Polk County (FL) Fire Rescue redesigned their pediatric and neonatal resuscitation practices and went from 0% resuscitations to an amazing 35% survival-to-discharge. This session will detail how they achieved this great success and illustrate why post-cardiac arrest care should focus on maintenance of adequate oxygen delivery, provision of support for post-cardiac arrest myocardial dysfunction, avoidance of secondary neurological injury, and monitoring for, and treatment of, post-arrest seizures. It will illustrate why it's important to determine the cause of arrest because of the possibility of family genetic diseases and demonstrate optimal strategies for survival in pediatric arrest.

HIGH FIDELITY, LOW COST AIRWAY TRAINING

NREMT CATEGORY: OTHER

Matthew Philbrick, BS, AS, FP-C, CCEMTP, Medical Operations Manager, Mercy Flights, Inc.

Airway trainers can be beyond your current budget capacity. Manikin heads are used to exhaustion. And, once you intubate a manikin, it's difficult to create additional airway management experience with it. In this informative and innovative presentation, Matthew Philbrick will show you how to build two different, inexpensive airway trainers: A surgical cricothyrotomy trainer utilizing 3D printing techniques and a SALAD manikin that actually 'vomits'.

HUMAN FACTORS, CRITICAL DECISION MAKING, STRESS AND ERROR PREVENTION

NREMT CATEGORY: OPERATIONS

Shaughn Maxwell, EMT-P, Deputy Chief EMS, South Snohomish County Fire & Rescue

Human Factors Psychology is the science of optimizing human performance and minimizing error. This session will help you optimize human wellbeing and overall system performance, with Human Factors helping you understand interactions highlight the impact of stress on decision-making and how the use of carefully developed checklists can leverage providers to be highly successful in the street. Chief Maxwell will present lessons learned from researchers from the U.S. Military and NASA to enhance medic and firefighter performance.

HUMAN TRAFFICKING: THE INTERNATIONAL CRISIS IN YOUR BACKYARD

NREMT CATEGORY: OPERATIONS

Michele Sorrell, MSN, SANA-A, Forensic Nurse Program Manager, Cleveland Clinic
Thomas Beers, EMS Manager, Cleveland Clinic

Responders routinely have contact with victims of human sex and slave labor trafficking and often don't recognize the signs of it, how to report it, record it, and take action. This session will detail the human trafficking problem; why it is getting worse; how it impacts every city; the role you have in its recognition, prevention and investigation; and what role administrators and medical commanders have in the fight.

IDENTIFYING LIFE THREATENING CEREBROVASCULAR INJURIES

NREMT CATEGORY: CARDIOVASCULAR

Robert Curran, Injury Prevention and Trauma Outreach Coordinator, NYP/Cornell Department of Trauma

The incidence of two specific Cerebrovascular Injuries are increasing, blunt cerebrovascular injury and subdural hematomas. Both can be life threatening and both mimic other benign conditions. Attendees will be presented with cases with a thorough discussion of the anatomy and pathophysiology, as well as prehospital and in-hospital management.

MOBILE HEALTHCARE INNOVATIONS IN FIRE-BASED EMS AGENCIES

NREMT CATEGORY: OTHER

Moderator: *Matt Zavadsky, MS-HSA, NREMT, Chief Strategic Integration Officer, MedStar Mobile Healthcare*

Panelist(s): *Alan Butsch, Battalion Chief, MCFRS*
James Matz

Mark R. Fletcher, NRP, Deputy Chief, Baltimore City Fire Department
Sarah McCrea, EMTP, Assistant Fire Chief, Las Vegas Fire & Rescue

For many fire agencies, EMS represents most of their response volume. Changes in stakeholder expectations for how EMS will demonstrate value provide an exceptional opportunity for entrepreneurial fire service leaders to capitalize on the EMS 3.0 transformation. Las Vegas Fire Rescue, Baltimore City and Montgomery County Fire Departments are exceptional examples of how well-established fire agencies can change their culture, AND their service delivery models to meet the new value challenges head on!

THE REVISED CLINICAL RESPONSE MODEL AT AUSTRALIA'S AMBULANCE VICTORIA

NREMT CATEGORY: OTHER

Tony Walker, ASM, Chief Executive Officer, Ambulance Victoria, Australia

The Chief Executive Officer of Australia's Ambulance Victoria (AV) will explain how his system redesigned its Clinical Response Model (CRM) and is now able to respond quicker to patients across all priority levels to better assess, and meet, each patient's individual needs through a focus on assessment of the individual need of patients and the most appropriate response for each to ensure ambulances are available for emergencies, with almost 7,000 additional high priority patients now receiving paramedic care within the 15-minute response target annually. A stronger focus on assessing people and referring patients to care that's more appropriate to their needs improve response times and significantly decreases the number of people unnecessarily being seen at EDs.

CONFERENCE SESSIONS

SUSPECTING SEPSIS

NREMT CATEGORY: MEDICAL

Mike McEvoy, PhD, NRP, RN, CCRN, EMS Coordinator, Saratoga County, New York

This session will explain what goes wrong in the human body that leads to sepsis and multisystem organ failure that occurs with sepsis, how commonly this occurs, why sepsis is so difficult to detect and diagnose, and current recommendations on sepsis screening and treatment. You'll also gain insight into current controversy about the best treatments for sepsis and how this may affect other best practices in healthcare.

UNDERSTANDING & PREVENTING EMERGENCY RESPONDER SUICIDE

NREMT CATEGORY: MEDICAL

Dena Ali, Firefighter, Captain, Raleigh Fire Dept.

Rather than focusing on individual risk factors, this class will explain how creating an environment to encourage help-seeking behavior can alter an individual's trajectory toward suicide. Prevention methods will be explained along with common risk factors to help with intervention. The Interpersonal Theory of Suicide, which demonstrates that suicide occurs when 3 factors intersect, will be detailed.

WHAT GOOD COACHES KNOW...GETTING THE VERY BEST FROM PEOPLE

NREMT CATEGORY: OTHER

Jonathan Politis, MPA, NRP, EMS Educator/Consultant/Paramedic, Jon Politis Emergency Services Education

It's often said that people don't quit their jobs...they quit their bosses! Bad coaching demotivates people, causes attrition and negative workplace behaviors. Good coaching helps build on the high degree of motivation that people already have. Come learn the secrets of "Non-Destructive" coaching to help you build great teams. Learn the secrets of performance and what good coaches know about building the best teams.

FRIDAY, FEBRUARY 22, 2019

1:15 PM – 2:15 PM

BREAKING DOWN BARRIERS TO INNOVATION

NREMT CATEGORY: OTHER

Kevin Munjal, MD, MPH, Assistant Professor, Emergency Medicine, Icahn School of Medicine at Mount Sinai

Matt Zavadsky, MS-HSA, NREMT, Chief Strategic Integration Officer, MedStar Mobile Healthcare

Learn about the Promoting Innovation in EMS (P.I.E.) project, a groundbreaking undertaking which assembled key emergency service industry leaders and external stakeholders to identify and break down barriers to EMS innovation. The report generated from this initiative gives exceptional insight into how to implement innovation in EMS and addresses "who" the most likely 'actors' are to block innovation. You will leave with actionable recommendations you can use to foster emergency response innovation in your community.

CARING FOR THE BOMBING PATIENT AND THE CASE FOR THE USE OF WHOLE BLOOD

NREMT CATEGORY: TRAUMA

Andrew Fisher, PA-C, Texas Army National Guard, Medical Student, Texas A&M College of Medicine

Prehospital blood transfusions have been shown to help decrease mortality. Most prehospital and military blood transfusions are given as component therapy of red blood cells and/or fresh frozen plasma but Major Andrew Fisher will discuss how whole blood, specifically low titer group O whole blood may be a better option. He will present three reasons why your system may soon use LTOWB, and show you how dilutional coagulopathy can happen with both component therapy and the use of crystalloids and colloids, and illustrate how component therapy has three times the anticoagulants and additives and may contribute to your trauma patient's hypocalcemia.

A CLOSE-UP LOOK AT AN EMS SERVICE FROM OVER THE POND

NREMT CATEGORY: OTHER

James Harness, Paramedic, East Midlands Ambulance Service

Ricky Harrison, Clinical Operations Manager, East Midlands Ambulance Service

Rosie Sears, Paramedic, East Midlands Ambulance Service

Ross Ludford, Clinical Operations Manager and Paramedic, East Midlands Ambulance Service

This session will enable you to gain insight into the everyday working environment and service provided by a progressive and innovative ambulance service from the United Kingdom. You'll learn about East Midlands Ambulance Service latest research projects, their coordinated response system and how incidents are managed ran from dispatch to discharge.

COLLABORATING WITH HOSPITALS, ACOS AND MCOS FOR MIH AND COMMUNITY PARAMEDICINE

NREMT CATEGORY: OTHER

Charles Blankenship, FACPE, MBA, CCEMTP, Manager, System EMS Transport, Mission Health

This session will help you discover the needs and pain points of hospitals, Accountable Care Organizations and Managed Care Organizations. You will learn how to approach leadership with the right data and solutions that create opportunities for all; Create a service that has appeal to insurance companies, brokers, companies and health benefits advisors; Understand Healthcare Executive language, metrics and needs, shared savings and cost avoidance; Basic concepts of an at-risk model; and how to participate in bundled services and perform a needs assessment for Hospital/ACO/MCO.

DIFFERENTIATING CARDIAC VS NON-CARDIAC CONDITIONS IN INFANT EMERGENCIES

NREMT CATEGORY: CARDIOVASCULAR

Lisa Drago, DO, FAAP, Assistant Professor of Pediatrics and Emergency Medicine, Cooper Medical School of Rowan University/ Cooper University Hospital

Caring for a critically ill infant who may have congenital heart disease can be an extremely stressful experience. This insightful lecture uses a simple approach, similar to the pediatric assessment triangle, to help providers distinguish cardiac from noncardiac causes in acutely ill infants. You will leave this session much more confident in your ability to care for this complicated patient population.

FIRE & EMS CONSOLIDATION "THE UNTOLD STORY"

NREMT CATEGORY: OTHER

Jason Jackson, Assistant Chief, Pearland Fire Department

Learn the actions and lessons learned during the consolidation of the EMS and Fire Departments in the City of Pearland (TX) into the Pearland Fire Dept. Jason Jackson will discuss the challenges faced from inception to present day along with the many lessons learned and identified improvement areas that still challenge the department. He will also discuss important data, case studies conducted, equipment and apparatus changes, cross training needs and accomplishments, rapid department growth, and the need for a change in department culture.

CONFERENCE SESSIONS

GREAT LEADERS HAVE A PASSION FOR IT!

NREMT CATEGORY: OTHER

Rick Lasky, Fire Chief (ret.), Lewisville (TX) Fire Dept.

Come learn how the positive traits of a leader are often defined by their values, passion for what they do, and their ability to “see” things that others don’t. Rick Lasky will show you how those that lack an understanding of EMS view it as a burden while those who “get it” view it as a blessing!

IMPROVING THE MENTAL HEALTH AND WELLBEING OF YOUR STAFF

NREMT CATEGORY: OTHER

Tony Walker, ASM, Chief Executive Officer, Ambulance Victoria, Australia

Learn how Australia’s Ambulance Victoria, which for years accepted that “injury”, including psychological injury, was just part of the job for their personnel, developed and implemented a comprehensive program to improve the mental health and wellbeing of their staff and volunteers. Learn about the program’s comprehensive Mental Health and Wellbeing Strategy was developed through extensive consultation with AV staff, their families and unions; a unique partnership with beyondblue to deliver staff training; how reforms reduced stigma by normalizing the conversation around mental health; and improved the mental health and wellbeing of AV staff.

THE ISRAELI APPROACH TO MCIs

NREMT CATEGORY: OPERATIONS

Dovie Maisel, EMT-P, Senior Vice President International Operations, United Hatzalah/United Rescue

This session will introduce you to the vast experience and lessons learned from years of experience in Israeli EMS response to hundreds of terror related MCI’s. Dovie Maisel will discuss critically important aspects of staging, incident command, triage, safety measures, and unsecured scene medical response and teach you how to minimize the stay and play component and rapid transport to the ER/OR. He will use actual case studies of coordinated attacks executed by terror groups within Israel to illustrate his points and allow you to get the feel of terror attacks, and trigger your mind to think different and understand that these incidents can occur anywhere – at any time.

THE MENTALLY ILL PATIENT CHALLENGE – EMS ROLE IN TREATMENT AND TRANSPORT

NREMT CATEGORY: MEDICAL

*Pat Songer, NREMT-P, BS, FACPE, Senior Vice President, Ready Responders
Steve Wirth, Esq., EMT-P, Attorney at Law, Page, Wolfberg & Wirth LLC*

One of the most difficult patients we encounter is the mental health patient. Now with so many inpatient mental health programs eliminated, seriously ill patients are left without viable treatment options, putting EMS “in the middle”, and in some cases, “between a rock and a hard place” in dealing with them and the legal issues that surround them, especially where the patient is non-compliant with treatment. This session will discuss the current state of mental health laws as they relate to EMS and strategies to minimize risk and improve patient care.

IS YOUR EMS AGENCY READY FOR THE SILVER TSUNAMI?

NREMT CATEGORY: OPERATIONS

Raphael Barishansky, MPH, MS, CPM, Deputy Secretary of Health, Pennsylvania Department of Health

America is aging, with the number of older Americans expected to double, to 72.1 million by 2030. Many of these patients will present with chronic medical/psychological conditions as well as medications utilized to treat them. This session will illustrate the large percentage of geriatric patients also impacted by economic instability, elder abuse, alcoholism and hoarding disorder and explain the unique challenges EMS providers will face and best practices being implemented to address these issues.

M.I. MISSING CARDIAC PATIENTS? A GUIDE TO ACUTE CORONARY SYNDROMES

NREMT CATEGORY: CARDIOVASCULAR

Rommie Duckworth, BS, LP, Captain, Ridgefield (CT) Fire Department

Early acquisition and interpretation of 12 lead ECGs are key to effective treatment of patients with STEMI, but are we identifying all of the patients who should be evaluated with a 12 lead? Can 12 lead ECGs be effectively acquired by BLS providers? This lecture presents the pathophysiology of S-T elevation myocardial infarction in an easy-to-understand style to help you identify, triage and treat AMI patients utilizing the latest research behind the AHA Guidelines changes.

RECOGNIZING SEPSIS ON THE STREET

NREMT CATEGORY: MEDICAL

Curtis Knoles, MD, FAAP, Assistant Medical Director, Medical Control Board, EMS System for Metropolitan Oklahoma City and Tulsa

Mark Piehl, MD, MPH, Pediatric Intensivist, WakeMed Children's Hospital

Paul Banerjee, DO, Medical Director, Polk County Fire Rescue

Sepsis occurs when the body's response to infection causes injury to its own tissues and organs. But, in the very young, old, and people with a weakened immune system, there may be no symptoms of a specific infection and the body temperature may be low or normal, rather than high. So early prehospital sepsis recognition is a life saver. Learn how early administration of IV fluids and antibiotics can significantly lower mortality rates in these patients, how to recognize subtle signs and symptoms usually missed in pediatric and adult sepsis patients, and treat these patients successfully.

VASOPRESSOR TALK: PUT THE PRESSOR ON

NREMT CATEGORY: CARDIOVASCULAR

Mike McEvoy, PhD, NRP, RN, CCRN, EMS Coordinator, Saratoga County, New York

Vasopressors have been used for decades to treat hypotension, often with life-saving results, but sometimes with serious adverse effects. This session will review modern vasopressor infusion, oral and push dose pressors, their indications, actions, administration pearls, monitoring, pharmacokinetics and adverse effects. Use of norepinephrine, epinephrine, phenylephrine, vasopressin, ephedrine, midodrine, methylene blue, and the newly marketed angiotensin II will be discussed.

WARM ZONE TRAUMA CARE

NREMT CATEGORY: TRAUMA

Chris Lorenz, Deputy Fire Marshal/SWAT Medic, Central Pierce Fire & Rescue

Warm Zone trauma care is not limited to mass violence scenes. And exsanguination can occur on any call. Hemorrhage control requires speed, proper technique, and aggressiveness regardless of whether it was caused by a machinery accident or an act of violence. This presentation and practicum will focus on both warm zone hemorrhage and exsanguination mitigation and introduce you to a successful program taught to all firefighters, and law enforcement personnel, as well as school district and university staff and faculty in a region.

WHAT YOU'LL SEE

TYPES OF PRODUCTS & SERVICES ON DISPLAY

- Advanced Life Saving Equipment
- Airway Equipment
- Ambulances & Specialty Vehicles
- Apparel & Accessories
- Associations
- Automatic and Air Shoreline Ejectors
- Bags, Cases, Kits
- Bar Coding - Systems & Devices
- Basic Life Saving Equipment
- Battery Chargers
- Billing Systems & Software
- Breathing Equipment
- Communications Equipment
- Computers/Computer Systems/Software
- Consulting/Management/Legal Services
- Defibrillators/Cardiac Monitors/AEDs
- Disaster Management
- Education and Training
- Electrical Load Managers
- Emergency Preparedness Management Software
- First Responder Equipment
- Hazardous Material Equipment
- Health & Fitness
- Immobilization Devices
- Incident Management
- Infection Control/Decontamination Technology
- Insurance
- Lighting
- Medical Equipment (incl. burn treatment, IV, airway, bandages)
- Mobile Devices
- Mobile Electronics
- Oxygen Equipment
- Patient Assessment
- Personal Protection
- Pharmaceuticals
- Publications
- Recruitment
- Rescue Equipment
- Resuscitation Equipment
- Simulators/Manikins
- Stretchers
- Vehicle Monitoring/Tracking/Maintenance/Safety
- Mechanical Ventilators



GO TO WWW.EMSTODAY.COM to search for a company, product or service you're interested in visiting!

You can even connect with that exhibitor and arrange a meeting!

BE SEEN AT
**EMS
TODAY!**

**SPACE STARTS AT
10X10 UNITS:**

**STANDARD INLINE BOOTH: \$25 PER SQ. FT.
VEHICLE SPACE: \$12 PER SQ. FT.**

*Additional discounts may apply, please contact us today to see if your company qualifies.

BOOK **YOUR
SPACE**
TODAY!



RODW@PENNWELL.COM



+1-918-831-9481

EXHIBITOR LIST

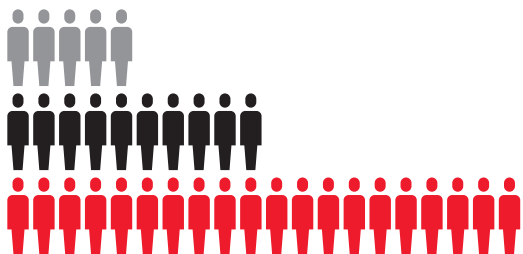
(As of August 27, 2018)

- 5.11
ALADTEC
AMBU
AMERICAN HEART ASSN - MISSION:LIFELINE
ARGENTUM MEDICAL
ARKRAY USA
ATLANTIC EMERGENCY SOLUTIONS
ATLANTIC SAFETY PRODUCTS
BENCHMADE KNIFE CO.
BINDER LIFT
BOUND TREE MEDICAL
BRADY PUBLISHING/ PEARSON
BRAUN INDUSTRIES
BREAKTHROUGH INNOVATIONS
CAE HEALTHCARE
CAMBRIDGE SENSORS USA, LLC
CARDIONICS
CERTA DOSE
CLORDISYS SOLUTIONS, INC.
CODE GREEN CAMPAIGN, THE
COLUMBIA SOUTHERN UNIVERSITY
COMPX SECURITY PRODUCTS
DEFIBTECH
DEMERS AMBULANCES USA INC.
DIGITCARE CORPORATION
DIGITECH COMPUTER
DISTANCE CME
ECORE SOFTWARE INC.
EMERGENCY REPORTING
EMERGENT RESPIRATORY
EMS MGMT & CONSULTANTS INC
EMS SURVEY TEAM
EMS1.COM/PRAETORIAN DIGITAL
EMSAR
EMSCARTS, INC
ESI EQUIPMENT INC.
ESO
EVS LTD
EXCELLANCE INC
FEDERAL SIGNAL
FERNO-WASHINGTON INC
FIRSTWATCH SOLUTIONS, INC.
FOXFURY LIGHTING SOLUTIONS
FUJITSU AMERICA INC.
GAUMARD SCIENTIFIC
GERBER OUTERWEAR
GUARDIAN EMS PRODUCTS
H&H MEDICAL CORPORATION
HAIX NORTH AMERICA INC
HALYARD HEALTH
HANDTEVY PEDIATRIC EMERGENCY STANDARDS, INC.
HARTWELL MEDICAL
HEALTH CARE LOGISTICS
HENRY SCHEIN
IAMRESPONDING.COM
IMAGETREND
INTEGRACONNECT
INTERMEDI
INTERNATIONAL POLICE MOUNTAIN BIKE ASSN
ISIMULATE
JONES & BARTLETT LEARNING PUBLIC SAFETY GROUP
KEMP USA
KUSSMAUL ELECTRONICS
LAERDAL MEDICAL
LIQUIDSPRING LLC
MASIMO
MEDIC-CE
MEDIX SPECIALTY VEHICLES
MEDLINE INDUSTRIES, INC
MEDTRONIC
MERCURY MEDICAL
MERET PRODUCTS
MICROFLEX
MMS-A MEDICAL SUPPLY COMPANY
MOORE MEDICAL CORP
MORGAN LENS, THE
NASCO HEALTHCARE
NATIONAL REGISTRY OF EMT'S
NCE
NELDERM™ HYDROGEL DRESSINGS
NINTH BRAIN
NONIN
NORTH AMERICAN RESCUE, LLC
NOVA BIOMEDICAL
ONSPOT OF NORTH AMERICA
OPERATIVE IQ
OSAGE AMBULANCE
OXYGEN GENERATING SYSTEMS INTL
PERSYS MEDICAL
PH&S PRODUCTS
PHILIPS
PHYSIO-CONTROL/STRYKER
POCKET NURSE®
POLAR BREEZE
PULMODYNE
PULSARA
PULSEPOINT
PWW MEDIA INC./NAAC
QUANTUM EMS
QUICK MED CLAIMS
QUIKCLOT
RESCUE 1/ PL CUSTOM
RESCUE ESSENTIALS
RICHMOND AMBULANCE AUTHORITY
ROSCO, INC.
RX FABRICATION
SAM MEDICAL PRODUCTS
SKEDCO INC.
SOUTHEASTERN EMERGENCY EQUIPMENT
SSCOR INCORPORATED
SUPERMAX
TAYLOR HEALTHCARE PRODUCTS
TECHNIMOUNT SYSTEM INC.
TELEFLEX
TOMAR ELECTRONICS, INC
TRANSLITE LLC
TRAUMA SOFT
TWO RIVERS MEDICAL
ULTIMATE POWER
VAIRKKO
VALOR FIRST RESPONDER SEATING
VFIS
WAKE COUNTY EMS
WALDORF UNIVERSITY
WATER-JEL
WEINMANN EMERGENCY MEDICAL TECHNOLOGY GMBH + CO. KG
WELDON A DIVISION OF AKRON BRASS
WHELEN ENGINEERING CO., INC.
WISE, D. CANALE ~ FAMILY COMPANY
ZIAMATIC CORPORATION
ZOLL MEDICAL CORPORATION

BEST WAYS TO SAVE

BEST CREW PRICING IN THE INDUSTRY

WILL YOUR CREW BE ATTENDING EMS TODAY 2019? REGISTER TOGETHER AND GET A SIGNIFICANT GROUP DISCOUNT! THE MORE YOU SEND, THE MORE YOU SAVE! **NOTE: CREWS MUST BE FROM SAME AGENCY/DEPARTMENT.*



2019 CREW PRICING	Save \$\$\$ by registering your crew!		
	ALPHA	3-5	\$1,000
	BRAVO	6-10	\$2,000
	CHARLIE	11-19	\$3,000
	DELTA	20-29	\$4,000
	ECHO	30 or more	\$5,000

ALL PRICING IN USD

Email EMSToday@compusystems.com to get your crew registered today!

SCHOLARSHIP OPPORTUNITY

Don't let the price of registration hold you back from attending EMS Today for the first time! Apply for a scholarship to see if you qualify for a FREE full conference registration!

Exhibitors donate unused conference registrations so that you can attend. Apply before October 26, 2018 at www.EMSToday.com

ATTENTION EXHIBITORS! Do you have unused conference passes? Donate today to help provide more scholarship opportunities. Contact DanielleM@Pennwell.com



MILITARY ATTENDEES:

As a member of the military, you're automatically qualified for a \$150 discount off your Gold or Silver Passport conference registration. **Use Source Code: EMSTMIL19.** Military ID will be requested onsite at registration.

REGISTER TODAY

@EMSTODAY.COM/REGISTER

EXCLUSIVE DISCOUNT!

The early, early bird really does get the worm!

REGISTER FOR A GOLD PASSPORT WITH THE SOURCE CODE LISTED ON THE MAILING LABEL BY NOV. 31 TO SAVE AN ADDITIONAL \$75 OFF THE EARLY BIRD RATE

—THAT'S A \$175 DISCOUNT!



BEST VALUE

WHICH REGISTRATION TYPE IS RIGHT FOR YOU?	Gold Passport (3-Day)	Silver Passport (2-Day)	Exhibition Visitor Only
EXCLUSIVE DISCOUNT - registration on or before 11/31/18	\$375		
Early Bird Registration Pricing - registration on or before 1/18/19	\$450	\$325	\$20
Registration price after 1/18/19	\$550	\$435	\$35
Keynote Session	✓	✓ (if applicable)	✓
Exhibit Hall Entrance	✓	✓	✓
Conference Sessions	✓	✓	
Floor Giveaway Entry	✓	✓	
Networking Reception	✓	✓ (if applicable)	✓
Networking Party (Off-site)	✓	✓ (if applicable)	
JEMS Games Final Competition	✓	✓	✓
Hands-On Experience	✓	✓	✓

ENHANCE YOUR LEARNING BY ADDING ONE OF THESE ANCILLARY ITEMS:

Pre-Conference Workshop	4-Hour	\$125 early bird/ \$150 regular
Pre-Conference Workshop	8-Hour	\$225 early bird/\$250 regular
Breakfast Roundtable		\$40
Women's Breakfast Panel		\$40

HURRY, SPACE IS LIMITED.



The **JEMS** Conference & Exposition [®]

WWW.EMSTODAY.COM

FEBRUARY 20-22, 2019

NATIONAL HARBOR, MD

#EMSTODAY



WHAT'S INSIDE?

- Snapshot of EMS Today
- Networking Opportunities
- Conference Details
- Exhibition Info
- Registration Rates + Ways to Save

EXCLUSIVE DISCOUNT!



REGISTER WITH CODE
ILOVEEMST AND SAVE AN
ADDITIONAL \$75 OFF YOUR
EARLY BIRD GOLD PASSPORT