



Fort Bend County Engineering  
FORT BEND COUNTY, TEXAS

Richard W. Stolleis, P.E.  
County Engineer

October 25, 2018

Commissioner W. A. "Andy" Meyers  
Fort Bend County Precinct 3  
22333 Grand Corner Drive  
Katy, Texas 77494

**RE: Jordan Ranch, Section 8 - Traffic Control Plan  
Jordan Ranch, Section 10**

Dear Commissioner:

The Construction Completion letter was issued on 10/25/2018, which started the one year maintenance period. Fort Bend County Engineering has completed and recommends approval of the traffic control plan for the above referenced subdivision. The public hearing date for acceptance of the plan is being scheduled.

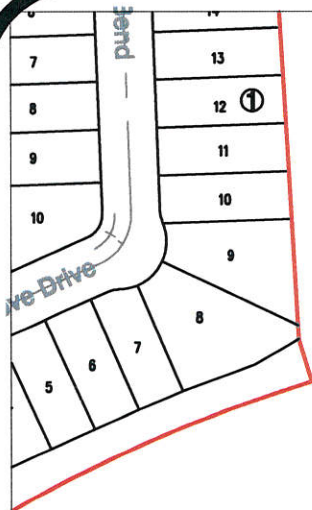
A copy of the traffic control plan is attached for your review. If you should have any questions, please give me a call.

Sincerely,

Chris Debaillon, PE, PTOE  
Assistant County Engineer – Traffic

CD/gyl

cc: Judge Robert E. Hebert, County Judge  
Marc Grant - FBC Road & Bridge  
Brian Fields - Signage Department  
File



# JORDAN RANCH, SECTION 8

Reserve "D" ①

# JORDAN RANCH, SECTION 5

Reserve "C" ①

# JORDAN RANCH STREET DEDICATION NO. 2 AND RESERVES

Reserve "B" ②

# JORDAN RANCH, SECTION 10

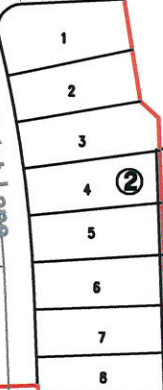


Gardenia Park Drive

Lilac Point Lane

Liatris Bend Lane

Lilac Point Lane



## Note:

The purpose of this traffic control plan is to establish traffic control for Jordan Ranch, Section 8.

Drawn By: L. Brdecka  
Date: 10-25-18

Approved By: Chris Deballon, PE PTOE  
Date: 10/25/18

Scale: 1" = 200'-0"

## Jordan Ranch, Section 8 Control Map and Traffic Sign Layout

Fort Bend County Engineering Dept.  
301 Jackson Street  
Richmond, Texas 77469

# SECTION 8



JORDAN RANCH,  
SECTION 5

JORDAN RANCH  
STREET DEDICATION  
NO. 2 AND RESERVES

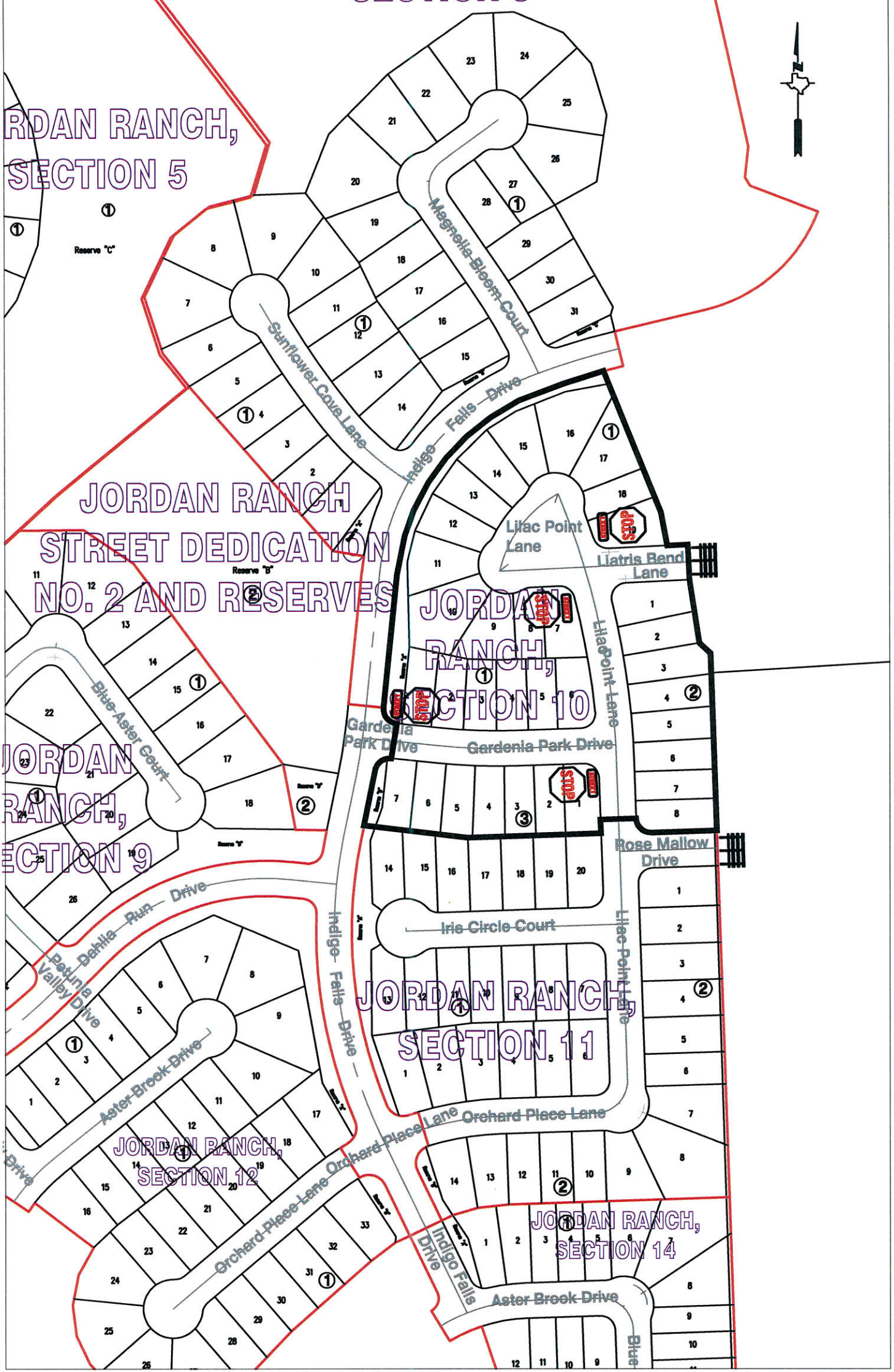
JORDAN RANCH,  
SECTION 10

JORDAN RANCH,  
SECTION 9

JORDAN RANCH,  
SECTION 11

JORDAN RANCH,  
SECTION 12

JORDAN RANCH,  
SECTION 14



## Note:

The purpose of this traffic control plan is to establish traffic control for Jordan Ranch, Section 10.

Drawn By: L. Brdecka  
Date: 10-25-18

Approved By: Chris Deballon, PE PTOE  
Date: 10/26/18

Scale: 1" = 200'-0"

Jordan Ranch,  
Section 10  
Control Map and Traffic Sign  
Layout

Fort Bend County Engineering Dept.  
301 Jackson Street  
Richmond, Texas 77469