



Fort Bend County Engineering
FORT BEND COUNTY, TEXAS

Richard W. Stolleis, P.E.
County Engineer

November 16, 2018

Judge Robert E. Hebert
Fort Bend County Judge
301 Jackson Street
Richmond, Texas 77469

RE: Major Thoroughfare Plan modifications of western Rosenberg, Fulshear, and Orchard ETJs

Dear Judge Hebert:

Fort Bend County Engineering respectfully requests modifications to the Fort Bend County Major Thoroughfare Plan (MTP). The requested modifications are to improve the roadway radius to improve safety and operation.

Long Lane – Remove Major Thoroughfare between Highway 36 and 90A

B J Dusek Road – Extend Major Thoroughfare to connect with Robinowitz Road

Missouri Avenue – Add Collector classification and connect to B J Dusek Road extension

N-S Collector between 90A and Highway 36 – remove

E-W Collector north of 90A – remove

Spencer Road – Upgrade to Major Thoroughfare

Anton Stade Road extension – Remove Major Thoroughfare classification

Roper Road – Upgrade classification to Major Thoroughfare and extend south to Spencer Road

Johnson Road – Realign to connect directly with Spur 10 at Highway 36

Gajevsky Road – Realign to connect to Johnson Road/Spur 10 realignment

N-S Major Thoroughfare – Add between B J Dusek and FM 1952 extension, west of salt dome

Pirtle Road – Remove Major Thoroughfare classification

Beadle Road – Realign Major Thoroughfare to intersect with Marick Road at Highway 90A

E-W Collector – Add Collector roadway between Johnson Road and Roper Road extensions north of Highway 36

Unnamed Collector – Add Collector roadway extending eastward from Johnson Road/Spur 10 realignment north of Highway 36

301 Jackson St., Suite 401 | Richmond, TX 77469
Phone 281-633-7500

A copy of the map is attached for your review. The public hearing date for acceptance of the change is being scheduled. If you should have any questions, please give me a call 281-633-7509.

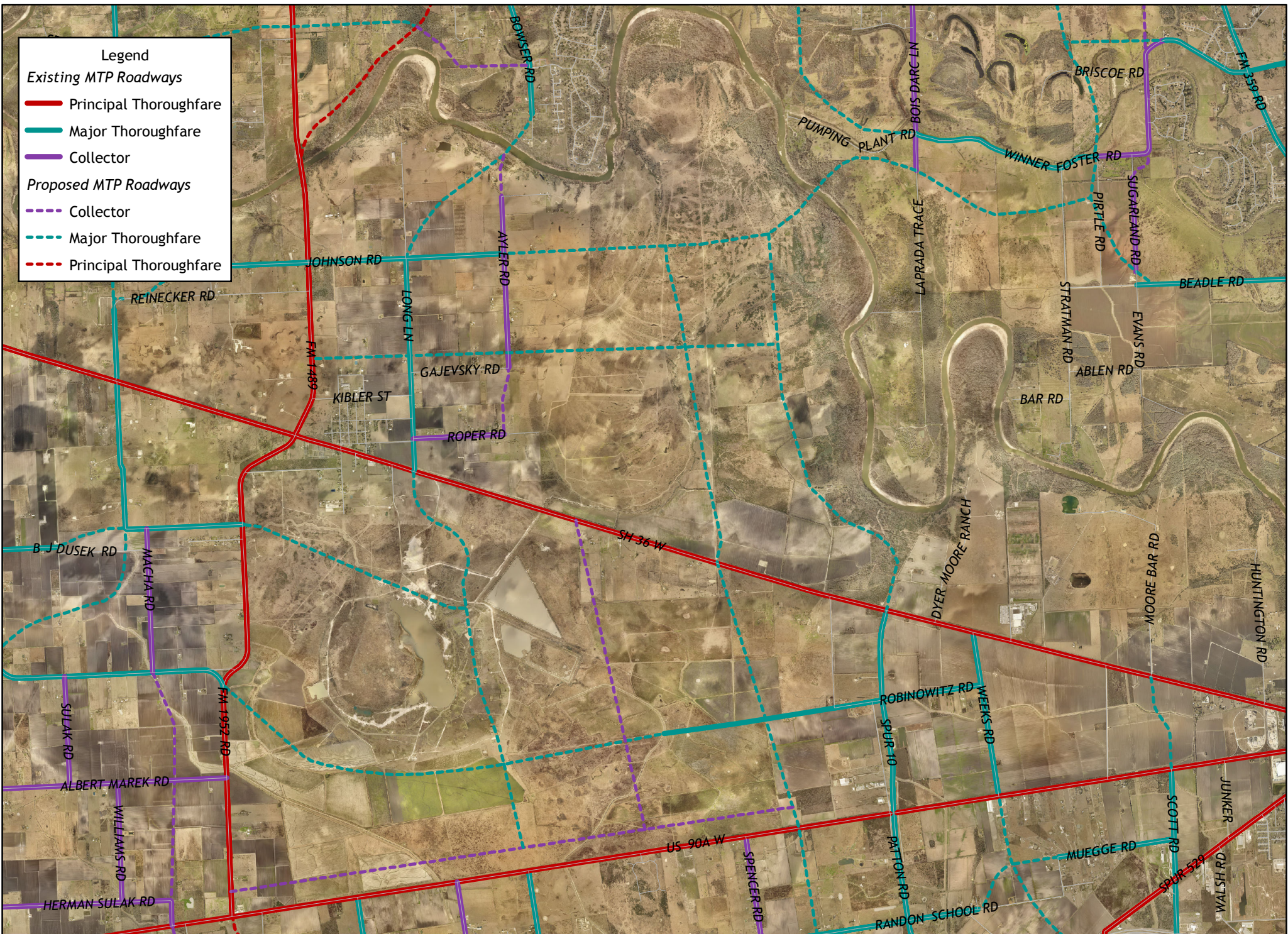
Sincerely,

Rick J. Staigle, PE, PTOE

Rick J. Staigle, PE, PTOE
First Assistant County Engineer

RJS/mjs

cc: Commissioner Vincent M. Morales, Jr., Pct. 1
Commissioner Grady Prestage, Pct. 2
Commissioner W. A. Andy Meyers, Pct. 3
Commissioner James Patterson, Pct. 4
Mr. Richard W. Stolleis, P.E.
File



Legend

Existing MTP Roadways

Principal Thoroughfare

Major Thoroughfare

Collector

Proposed MTP Roadways

Collector

Major Thoroughfare

Principal Thoroughfare

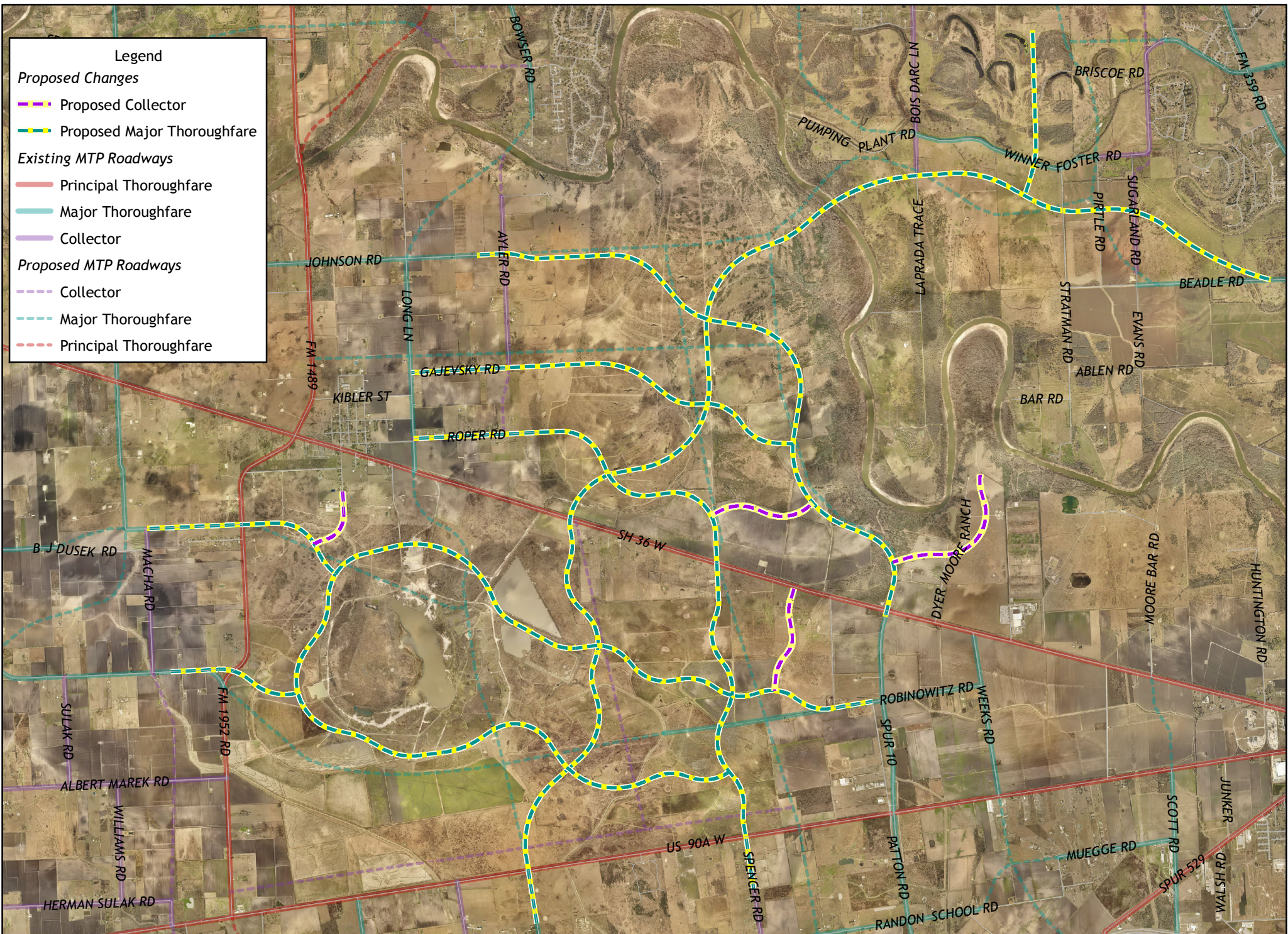


Map By:
Engineering GIS
November 2018

Major Thoroughfare Plan - Existing



This Geographic Information Systems (GIS) Data is a public resource of general information. The information contained was generated from GIS data maintained by Fort Bend County and different sources and agencies. The County of Fort Bend makes no warranty, representation, or guarantee as to the content, sequence, accuracy, timeliness, or completeness of any of the spatial data or database information provided herein. The County of Fort Bend shall assume no liability for any errors, omissions, or inaccuracies in the information provided, regardless of how caused; or any decision made or action taken or not taken by any person relying on any information or data furnished within. If any errors are detected, please contact the GIS Division of Fort Bend County Engineering so they may be corrected.



Map By:
Engineering GIS
November 2018

Major Thoroughfare Plan - Proposed Revision

0 0.5 1 1.5 2 Miles



This Geographic Information Systems (GIS) Data is a public resource of general information. The information contained was generated from GIS data maintained by Fort Bend County and different sources and agencies. The County of Fort Bend makes no warranty, representation, or guarantee as to the content, sequence, accuracy, timeliness, or completeness of any of the spatial data or database information provided herein. The County of Fort Bend shall assume no liability for any errors, omissions, or inaccuracies in the information provided, regardless of how caused; or any decision made or action taken or not taken by any person relying on any information or data furnished within. If any errors are detected, please contact the GIS Division of Fort Bend County Engineering so they may be corrected.