



Fort Bend County Engineering
FORT BEND COUNTY, TEXAS

Richard W. Stolleis, P.E.
County Engineer

November 13, 2018

Judge Robert E. Hebert
Fort Bend County Judge
301 Jackson Street
Richmond, Texas 77469

RE: Major Thoroughfare Plan modifications of FM 359 and Fulshear Gaston Road

Dear Judge Hebert:

Fort Bend County Engineering respectfully requests modifications to the Fort Bend County Major Thoroughfare Plan (MTP). The requested modifications are to improve the roadway radius to improve safety and operation.

FM 359 – Realignment to address increase roadway radius to improve safety and operation.

Fulshear Gaston Road – Adjusting alignment to connect to relocated FM 359 and follow existing unimproved road west of FM 359.

A copy of the map is attached for your review. The public hearing date for acceptance of the change is being scheduled. If you should have any questions, please give me a call 281-633-7515.

Sincerely,

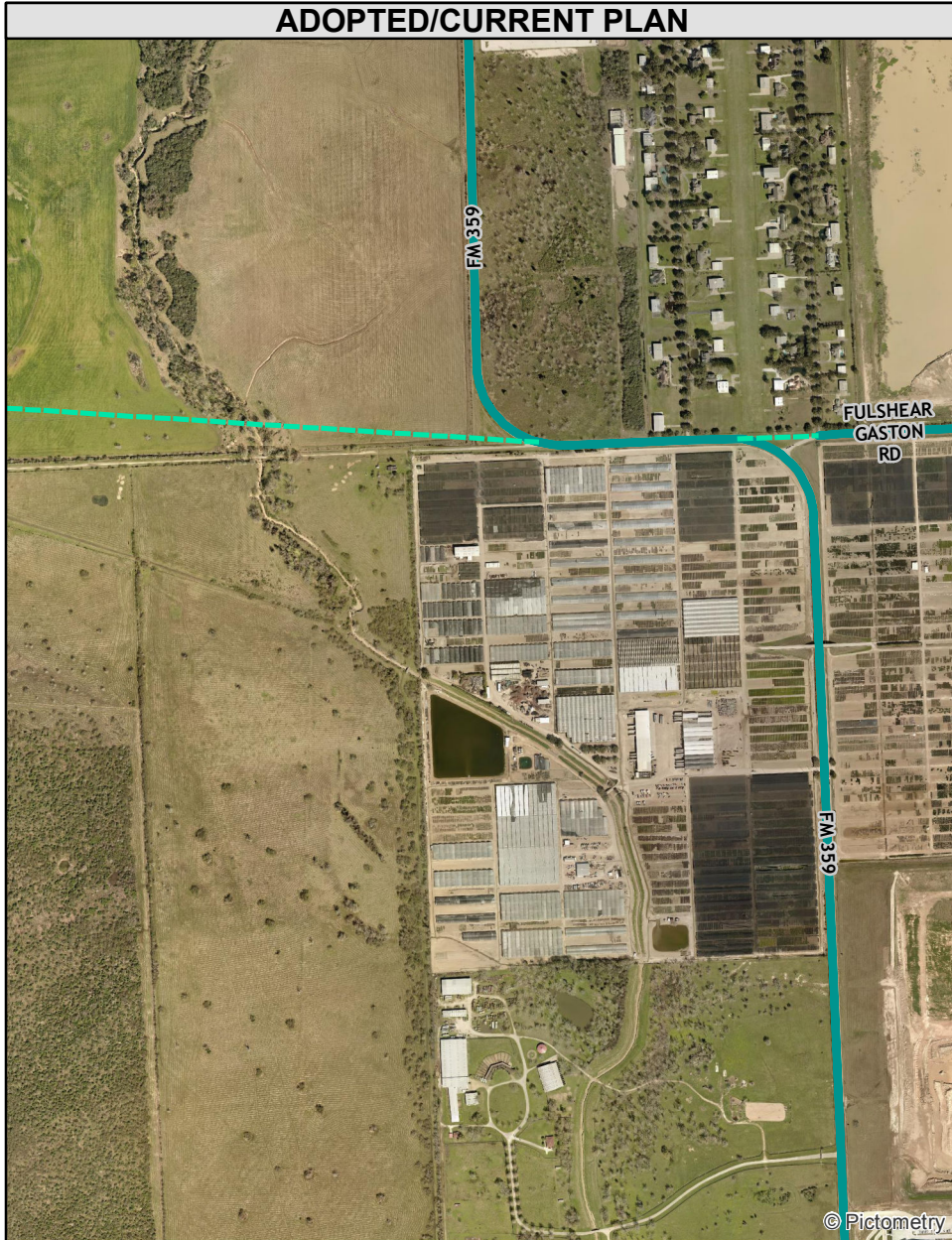
Maggie Dalton
Development Services Manager

MD/mjs

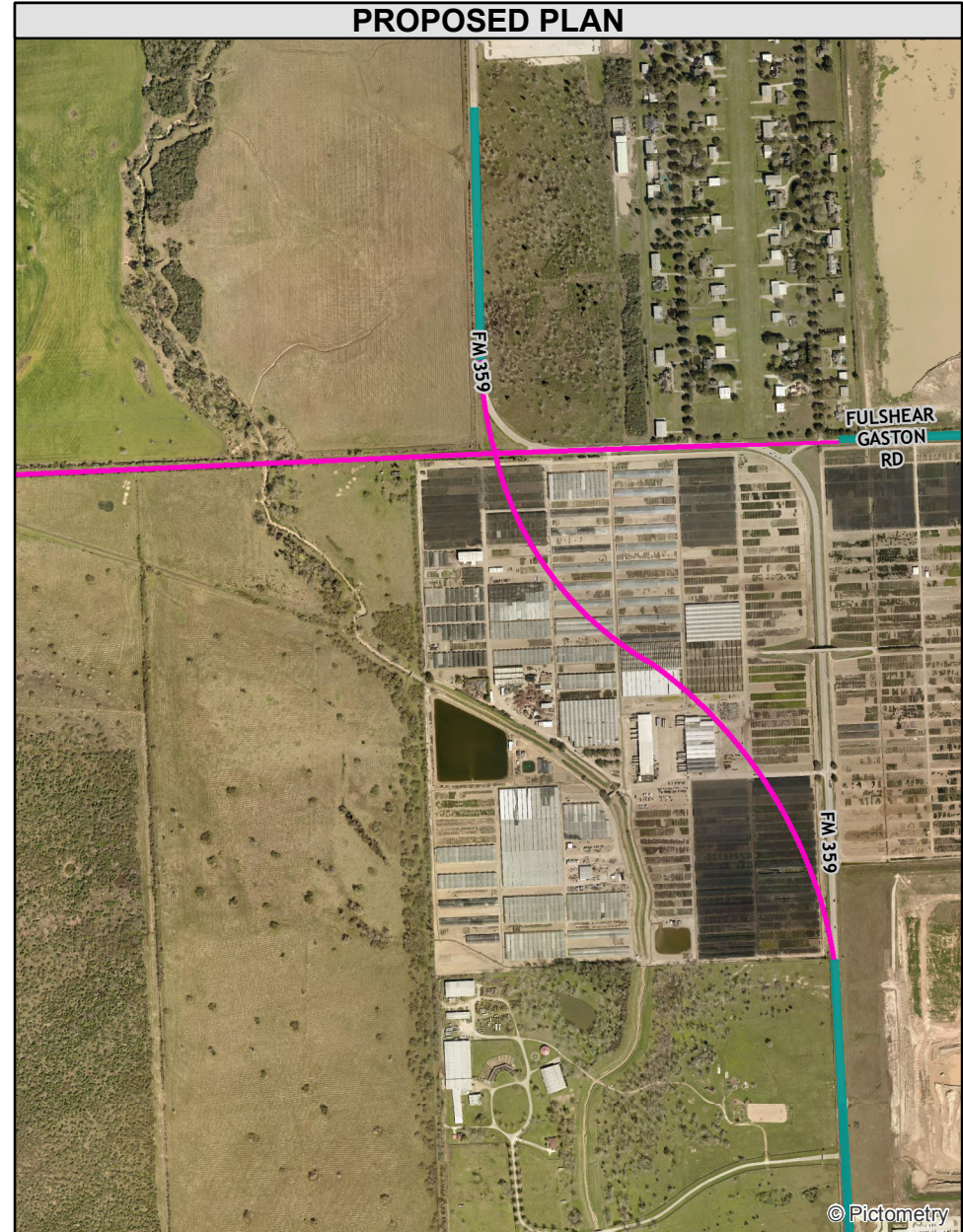
cc: Commissioner Vincent M. Morales, Jr., Pct. 1
Commissioner Grady Prestage, Pct. 2
Commissioner W. A. Andy Meyers, Pct. 3
Commissioner James Patterson, Pct. 4
Mr. Richard W. Stolleis, P.E.
File

FM 359 Reconfiguration

ADOPTED/CURRENT PLAN






PROPOSED PLAN



Map By:
GIS Division
Engineering Dept.
August 2018

Major Thoroughfare Plan - Revision

Legend

-  Proposed Road Reconfiguration
-  MTP 2015 Major Thoroughfare
-  MTP 2015 Proposed Major Thoroughfare



0 750 1,500 2,250 Feet

This Geographic Information Systems (GIS) Data is a public resource of general information. The information contained was generated from GIS data maintained by Fort Bend County and different sources and agencies. The County of Fort Bend makes no warranty, representation, or guarantee as to the content sequence, accuracy, timeliness, or completeness of any of the spatial data or database information provided herein. The County of Fort Bend shall assume no liability for any errors, omissions, or inaccuracies in the information provided, regardless of how caused; or any decision made or action taken or not taken by any person relying on any information or data furnished within. If any errors are detected, please contact the GIS Division of Fort Bend County Engineering so they may be corrected.