



**REVIEW BY FORT BEND COUNTY
COMMISSIONERS COURT**

**Fort Bend County
Engineering Department**
301 Jackson Suite 401
Richmond, Texas 77469
281.633.7500
Permits@fortbendcountytx.gov

Right of Way Permit

Commercial Driveway Permit

Permit No: 2018-22037

Applicant: MCI Metro Access Transmission Services, Corp./Golden Field Services

Job Location Site: Knight Road, Fresno, TX 77545

Bond No. **Date of Bond:** 5/1/2017 **Amount:** \$50,000.00

The above applicant came to make use of certain Fort Bend County property subject to, "The Order Regulating the Laying, Construction, Maintenance, and Repair of Buried Cables, Conduits, and Pole Lines, In, Under, Across or Along Roads, Streets, Highways, and Drainage Ditches in Fort Bend County, Texas, Under the Jurisdiction of the Commissioners Court of Fort Bend County, Texas," as passed by the Commissioners Court of Fort Bend County, Texas, of the Minutes of the Commissioners Court of Fort Bend County, Texas, to the extent that such order is not inconsistent with Chapter 181, Vernon's Texas Statutes and Codes Annotated.

Notes:

1. Evidence of review by the Commissioners Court must be kept on the job site and failure to do so constitutes grounds for job shutdown.
2. Written notices are required:
 - a. 48 hours in advance of construction start up, and
 - b. When construction is completed and ready for final inspection, submit notification to Permit Administrator thru MyGovernmentOnline.org portal.
3. This permit expires one (1) year from date of permit if construction has not commenced.
4. This permit applies to work performed within right-of-ways owned and maintained by Fort Bend County only, and it is the responsibility of the applicant to acquire all other necessary permits.

On this 6th day of November, 2018, Upon Motion of Commissioner _____, seconded by Commissioner _____, duly put and carried, it is ORDERED, ADJUDGED AND DECREED that said notice of said above purpose is hereby acknowledged by the Commissioners Court of Fort Bend County, Texas, and that said notice be placed on record according to the regulation order thereof.

Signature

By: 
County Engineer

Presented to Commissioners Court and approved.

Date Recorded _____ Comm. Court No. _____

Clerk of Commissioners Court

By: N/A
Drainage District Engineer/Manager

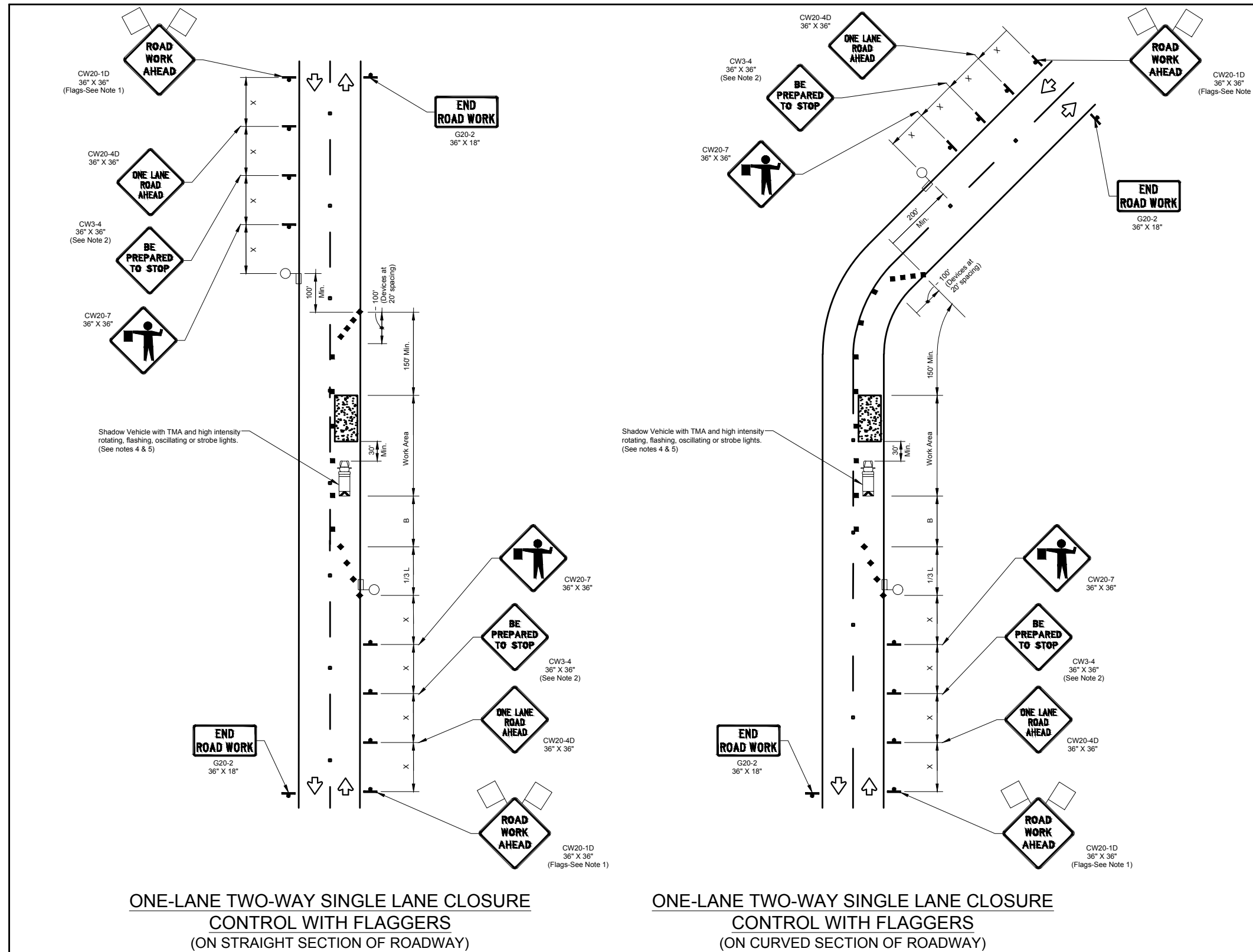
By: _____
Deputy

TRAFFIC CONTROL PLAN DETAILS



PROJECT: 1706ANAY.001

MISSOURI CITY, TX
MISSOURI CITY TO BLACK LAKE



TRAFFIC CONTROL PLAN SECTION SHALL BE COMPLETED BY ENGINEER

ROADWAY	POSTED SPEED	TAPER LENGTH	SPACING CHANNELIZING DEVICES		SIGN SPACING	BUFFER SPACE
			TAPER	TANGENT		
ELLISM RD.	30 MPH	180'	30'	60'	120'	90'
KNIGHT RD.	30 MPH	180'	30'	60'	120'	90'
MOORE RD.	30 MPH	180'	30'	60'	120'	90'
5TH ST.	35 MPH	245'	35'	70'	160'	120'
COURT RD.	35 MPH	245'	35'	70'	160'	120'
FT. BEND PKWY (TOLL RD.)	40 MPH	320'	40'	80'	240'	155'
MCKEEKER RD.	40 MPH	320'	40'	80'	240'	155'
WATT PLANTATION RD.	40 MPH	320'	40'	80'	240'	155'

LEGEND

	Type 3 Barricade		Channelizing Devices
	Heavy Work Vehicle		Truck Mounted Attenuator (TMA)
	Trailer Mounted Flashing Arrow Board		Portable Changeable Message Sign (PCMS)
	Sign		Traffic Flow
	Flag		Flagger

Posted Speed *	Formula	Minimum Desirable Taper Lengths "L"			Suggested Maximum Spacing of Channelizing Devices		Minimum Sign Spacing "X" Distance	Suggested Longitudinal Buffer Space "B"
		10' Offset	11' Offset	12' Offset	On a Taper	On a Tangent		
30	L = WS ² / 60	150'	165'	180'	30'	60'	120'	90'
35		205'	225'	245'	35'	70'	160'	120'
40		265'	295'	320'	40'	80'	240'	155'
45	L = WS	450'	495'	540'	45'	90'	320'	195'
50		500'	550'	600'	50'	100'	400'	240'
55		550'	605'	660'	55'	110'	500'	295'
60		600'	660'	720'	60'	120'	600'	350'
65		650'	715'	780'	65'	130'	700'	410'
70	700'	770'	840'	70'	140'	800'	475'	
75	750'	825'	900'	75'	150'	900'	540'	

* Conventional Roads Only
** Taper lengths have been rounded off.
L=Length of Taper(FT) W=Width of Offset(FT) S=Posted Speed(MPH)

- GENERAL NOTES**
- Flags attached to signs where shown are OPTIONAL.
 - All traffic control devices illustrated are REQUIRED, except those denoted with the triangle symbol are OPTIONAL.
 - Inactive work vehicles or other equipment should be parked near the right-of-way line and not parked on the paved shoulder.
 - A Shadow Vehicle with a TMA should be used anytime it can be positioned 30 to 100 feet in advance of the area of crew exposure without adversely affecting the performance or quality of the work. If workers are no longer present but road or work conditions require the traffic control to remain in place, Type 3 Barricades or other channelizing devices may be substituted for the Shadow Vehicle and TMA.
 - Additional Shadow Vehicles with TMAs may be positioned off the paved surface, next to those shown in order to protect wider work spaces.
 - Contractor shall provide and install traffic control devices in conformance with part VI of Texas Manual on Uniform Traffic Control Devices (TMUTCD) - Latest edition with revisions) during construction.
 - No lanes shall be blocked from 7am to 9am and 4pm to 6:30pm Monday thru Friday.
 - Off duty police officers/flaggers are required to direct traffic when applicable.
 - If project is within 400 feet from a signalized intersection, the Contractor shall contact Harris County Engineering Department, Traffic Signal Maintenance at (713) 881-3210 five (5) days prior to the start of construction.

MCI metro
 ACCESS TRANSMISSION SERVICES CORPORATION
 OUTSIDE PLANT CONSTRUCTION
 TITLE: FIBER OPTIC ROUTE
 MISSOURI CITY TO BLACK LAKE
 MISSOURI CITY, TX

DATE: 7/6/18

ENGINEER: L. STALCUP

DRAWN BY: G.F.S. (TJS)

REVISIONS

No.	DATE	DESCRIPTION	BY

EXCEPT AS MAY BE OTHERWISE PROVIDED BY CONTRACT, THESE DRAWINGS AND SPECIFICATIONS SHALL REMAIN THE PROPERTY OF MCI COMMUNICATIONS SERVICES INC. BOTH BEING ISSUED IN STRICT CONFIDENCE AND SHALL NOT BE REPRODUCED, COPIED, OR USED FOR ANY PURPOSE WITHOUT SPECIFIC WRITTEN PERMISSION.

SCALE
 HORIZONTAL: 1"= N/A
 VERTICAL: 1"= N/A
 MP _____ TO MP _____
 SHEET 8A OF 130
 FILE: ECC-FBRBLD01008BC.LIN

NO.	REVISIONS	DATE	NAME
1	UPDATED DEPARTMENT NAME & GENERAL NOTES	4/16/15	BSH

HARRIS COUNTY
 ENGINEERING DEPARTMENT

TEO, LLC
 5510 Community DRIVE
 Houston, Texas
 77005
 281-536-5123 OFFICE
 713-668-6334 FAX
 teo@teo.com
 FIRM # F-8978

PROJECT TITLE: 7906ANAY.001 MISSOURI CITY TO BLACK LAKE
 DRAWN BY: G.F.S. ERVIN CABLE CONSTRUCTION HCD STANDARD
 CK'D BY: G.F.S. SHEET DESCRIPTION: TRAFFIC CONTROL PLAN (RIGHT LANE CLOSURE) 39
 SCALE: N.T.S.
 DATE: 07/06/18 APPROVED BY: SHEET NO: 8A / 130

TRAFFIC CONTROL PLAN DETAILS



PROJECT: 1706ANAY.001

MISSOURI CITY, TX
MISSOURI CITY TO BLACK LAKE

TRAFFIC CONTROL PLAN SECTION SHALL BE COMPLETED BY ENGINEER

ROADWAY	POSTED SPEED	TAPER LENGTH	SPACING CHANNELIZING DEVICES		SIGN SPACING	BUFFER SPACE
			TAPER	TANGENT		
TEXAS PKWY	45 MPH	540'	45'	90'	320'	195'
SIENNA PKWY	45 MPH	540'	45'	90'	320'	195'

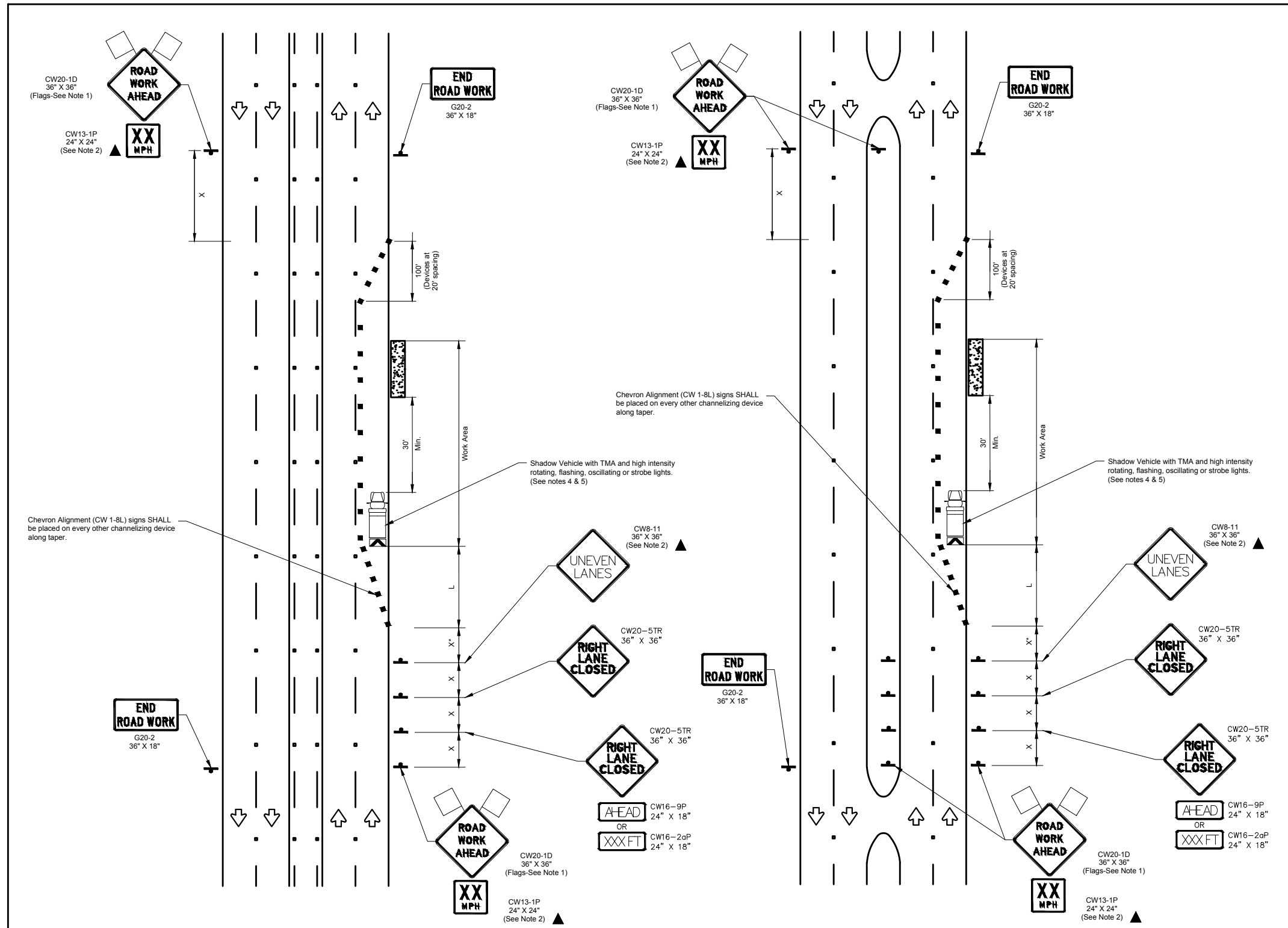
LEGEND

	Type 3 Barricade		Channelizing Devices
	Heavy Work Vehicle		Truck Mounted Attenuator (TMA)
	Trailer Mounted Flashing Arrow Board		Portable Changeable Message Sign (PCMS)
	Sign		Traffic Flow
	Flag		Flagger

Posted Speed *	Formula	Minimum Desirable Taper Lengths "L"			Suggested Maximum Spacing of Channelizing Devices		Minimum Sign Spacing "X" Distance	Suggested Longitudinal Buffer Space "B"
		10' Offset	11' Offset	12' Offset	On a Taper	On a Tangent		
30	$L = \frac{WS^2}{60}$	150'	165'	180'	30'	60'	120'	90'
35		205'	225'	245'	35'	70'	160'	120'
40		265'	295'	320'	40'	80'	240'	155'
45	L=WS	450'	495'	540'	45'	90'	320'	195'
50		500'	550'	600'	50'	100'	400'	240'
55		550'	605'	660'	55'	110'	500'	295'
60		600'	660'	720'	60'	120'	600'	350'
65		650'	715'	780'	65'	130'	700'	410'
70		700'	770'	840'	70'	140'	800'	475'
75		750'	825'	900'	75'	150'	900'	540'

* Conventional Roads Only
** Taper lengths have been rounded off.
L=Length of Taper(FT) W=Width of Offset(FT) S=Posted Speed(MPH)

- GENERAL NOTES
- Flags attached to signs where shown are OPTIONAL.
 - All traffic control devices illustrated are REQUIRED, except those denoted with the triangle symbol are OPTIONAL.
 - Inactive work vehicles or other equipment should be parked near the right-of-way line and not parked on the paved shoulder.
 - A Shadow Vehicle with a TMA should be used anytime it can be positioned 30 to 100 feet in advance of the area of crew exposure without adversely affecting the performance or quality of the work. If workers are no longer present but road or work conditions require the traffic control to remain in place, Type 3 Barricades or other channelizing devices may be substituted for the Shadow Vehicle and TMA.
 - Additional Shadow Vehicles with TMAs may be positioned off the paved surface, next to those shown in order to protect wider work spaces.
 - Contractor shall provide and install traffic control devices in conformance with part VI of Texas Manual on Uniform Traffic Control Devices (TMUTCD - Latest edition with revisions) during construction.
 - No lanes shall be blocked from 7am to 9am and 4pm to 6:30pm Monday thru Friday.
 - Off duty police officers/flaggers are required to direct traffic when applicable.
 - If project is within 400 feet from a signalized intersection, the Contractor shall contact Harris County Engineering Department, Traffic Signal Maintenance at (713) 881-3210 five (5) days prior to the start of construction.



RIGHT LANE CLOSURE (5 LANE ROAD)

RIGHT LANE CLOSURE (4 LANE BOULEVARD ROAD)

NO.	REVISIONS	DATE	NAME
1	UPDATED DEPARTMENT NAME & GENERAL NOTES	4/16/15	BSH

HARRIS COUNTY
ENGINEERING DEPARTMENT



TEO, LLC
5510 Community Drive
Houston, Texas
77005
281-536-5123 OFFICE
713-668-6334 FAX
teolc@gmail.com
FIRM # F-8978

PROJECT TITLE: 7906ANAY.001 MISSOURI CITY TO BLACK LAKE

DRAWN BY: GFS	ERVIN CABLE CONSTRUCTION	HCED STANDARD
CR'D BY: GFS	TRAFFIC CONTROL PLAN (RIGHT LANE CLOSURE)	41
SCALE: N.T.S.		SHEET NO: 8B / 130
DATE: 07/06/18	APPROVED BY:	

MCI metro
ACCESS TRANSMISSION SERVICES CORPORATION
OUTSIDE PLANT CONSTRUCTION
TITLE: FIBER OPTIC ROUTE
MISSOURI CITY TO BLACK LAKE
MISSOURI CITY, TX

DATE: 7/6/18
ENGINEER: L. STALCUP
DRAWN BY: G.F.S. (TJS)

REVISIONS

No.	DATE	DESCRIPTION	BY

EXCEPT AS MAY BE OTHERWISE PROVIDED BY CONTRACT, THESE DRAWINGS AND SPECIFICATIONS SHALL REMAIN THE PROPERTY OF MCI COMMUNICATIONS SERVICES INC. BOTH BEING ISSUED IN STRICT CONFIDENCE AND SHALL NOT BE REPRODUCED, COPIED, OR USED FOR ANY PURPOSE WITHOUT SPECIFIC WRITTEN PERMISSION.

SCALE
HORIZONTAL: 1"= N/A
VERTICAL: 1"= N/A
MP _____ TO MP _____
SHEET 8B OF 130
FILE: ECC-FBRBLD01008CC.LIN