

STANDARD UTILITY AGREEMENT

U-0037: ZAYO GROUP, LLC
County: Fort Bend
Highway: FM 1093 Westpark Extension Phase II

This Agreement by and between the County of Fort Bend, Texas, ("**County**"), and Zayo Group LLC, ("**Utility**"), acting by and through its duly authorized representative, shall be effective on the date of approval and execution by and on behalf of the **County**.

WHEREAS, the **County** has deemed it necessary to make certain highway improvements as designated by the **County** and approved by the Federal Highway Administration within the limits of the highway as indicated above;

WHEREAS, the proposed highway improvements will necessitate the adjustment, removal, and/or relocation of certain facilities of **Utility** as indicated in the following statement of work: Relocation of assets into a predesignated corridor according to the following schedule:

Start Date – April 2, 2018
Completion Date – May 31, 2018

and more specifically shown in **Utility's** Plans and Specifications, Estimated Costs, and Schedule which are attached hereto as Exhibits "A," "B" and "C."

WHEREAS, Subchapter E of Chapter 203 of the Texas Transportation Code regarding the relocation of utilities does not apply to this Project, but the **County** wishes to negotiate in good faith and enter into agreements with all affected utility companies for the participation in the costs of the adjustment, removal, and/or relocation of certain facilities as authorized under such subchapter.

WHEREAS, the **County**, upon receipt of evidence it deems sufficient, acknowledges **Utility's** interest in certain lands and/or facilities and determined it is appropriate to enter an agreement with **Utility** to govern the terms for participation in the costs of the adjustment, removal, and relocation of certain of its facilities located upon the lands as indicated in the statement of work above.

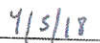
NOW, THEREFORE, BE IT AGREED:

The **County** will pay to **Utility** fifty percent (50%) of the documented actual costs incurred for relocation of the utility in adjustment, removal, and/or relocation of **Utility's** facilities up to the amount said costs may be eligible for **County** participation.

All conduct under this agreement, including but not limited to the adjustment, removal and relocation of the facility, the development and reimbursement of costs, any environmental requirements, and retention of records will be in accordance with all applicable federal and state laws, rules and regulations, including, without limitation, the Federal Uniform Relocation Assistance and Real Property Acquisition Policies Act, 42 U.S.C. §§ 4601, et seq., the National Environmental Policy Act, 42 U.S.C. §§ 4231, et seq., the Buy America provisions of 23 U.S.C. § 313 and 23 CFR 635.410, the Utility Relocations, Adjustments, and Reimbursements provisions of 23 CFR 645, Subpart A, and with the Utility Accommodation provisions of 23 CFR 645, Subpart B. **Utility** shall supply, upon request by the **County**, proof of compliance with the aforementioned laws, rules and regulations prior to the commencement of construction.

The **Utility** agrees to develop relocation or adjustment costs by accumulating actual direct and related indirect costs in accordance with a work order accounting procedure prescribed by **County**, or may, with the **County's** approval, accumulate actual direct and related indirect costs in accordance with an established accounting procedure developed by **Utility**. Bills for work hereunder will be submitted to **County** not later than 90 days after completion of the work.


Date 9/17/18
Fort Bend County


Initial

Date 9/5/18
Zayo Group, LLC

When requested, the **County** will make intermediate payments at not less than monthly intervals to **Utility** when properly billed and such payments will not exceed 90 percent (90%) of the eligible cost as shown in each such billing. Intermediate payments shall not be construed as final payment for any items included in the intermediate payment.

Upon execution of this agreement by both parties hereto, the **County** will, by written notice, authorize the **Utility** to perform such work diligently, and to conclude said adjustment, removal, or relocation by the stated completion date. The completion date shall be extended for delays caused by events outside **Utility's** control, including an event of Force Majeure, which shall include a strike, war or act of war (whether an actual declaration of war is made or not), insurrection, riot, act of public enemy, accident, fire, flood or other act of God, sabotage, or other events, interference by the **County** or any other party with **Utility's** ability to proceed with the relocation, or any other event in which **Utility** has exercised all due care in the prevention thereof so that the causes or other events are beyond the control and without the fault or negligence of **Utility**.

However, for any failure by **Utility** to conclude said adjustment, removal, or relocation by the stated completion date not caused by events outside **Utility's** control, the **County** may elect to: (1) reduce the reimbursement to **Utility** by one percent (1%) each day delayed; or (2) relocate the facility at the sole cost and expense of **Utility**.

The **County** will, upon satisfactory completion of the relocation or adjustment and upon receipt of final billing prepared in an approved form and manner, make payment in the amount of 90 percent (90%) of the eligible costs as shown in the final billing prior to audit and after such audit shall make an additional final payment totaling the reimbursement amount found eligible for **County** reimbursement.

Unless an item below is stricken and initialed by the **County** and **Utility**, this agreement in its entirety consists of the following:

1. Standard Utility Agreement;
2. Plans & Specifications (Attachment "A");
3. Utility Construction Cost Estimate (Attachment "B");
4. Utility's Schedule of Work and Estimated Date of Completion (Attachment "C").

All attachments are included herein as if fully set forth. In the event it is determined that a substantial change from the statement of work contained in this agreement is required, reimbursement therefore shall be limited to costs covered by a modification or amendment of this agreement or a written change or extra work order approved by the **County and Utility**.

This agreement is subject to cancellation by the **County** at any time up to the date that work under this agreement has been authorized and that such cancellation will not create any liability on the part of the **County**. However, the **County** will review and reimburse the **Utility** for eligible costs incurred by the **Utility** in preparation of this Agreement.

The **Utility** acknowledges to and for the benefit of the **County** and State of Texas that it understands the project under this Agreement is eligible for Federal-aid highway funds and as such, requires all of the iron, steel, and manufactured goods used in the project be produced in the United States ("Buy American Requirements") including iron, steel, and manufactured goods provided by the **Utility** pursuant to this Agreement.

The State Auditor may conduct an audit or investigation of any entity receiving funds from the **County** directly under this contract or indirectly through a subcontract under this contract. Acceptance of funds directly under this contract or indirectly through a subcontract under this contract acts as acceptance of the authority of the State Auditor, under the direction of the Legislative Audit Committee, to conduct an audit or investigation in connection with those funds. An entity that is the subject of an audit or investigation must provide the state auditor with access to any information the state auditor considers relevant to the investigation or audit.

The **Utility** by execution of this agreement does not waive any of the rights which **Utility** may have within the limits of the law.


Date
9/17/18
Fort Bend County

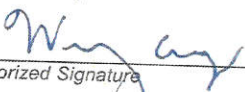
WC
Initial
4/5/18
Date
Zayo Group, LLC

It is expressly understood that the **Utility** conducts the adjustment, removal, or relocation at its own risk, and that Fort Bend County, Texas makes no warranties or representations regarding the existence or location of utilities currently within its right of way.

The signatories to this agreement warrant that each has the authority to enter into this agreement on behalf of the party represented.

UTILITY

Utility: Zayo Group, LLC
Name of Utility

By: 
Authorized Signature

Wenzel Cassity
Print or Type Name

Title: General Counsel

Date: April 5, 2018

 9/17/18
Date
Fort Bend County

WC 4/5/18
Initial Date
Zayo Group, LLC

EXECUTION RECOMMENDED:

COUNTY

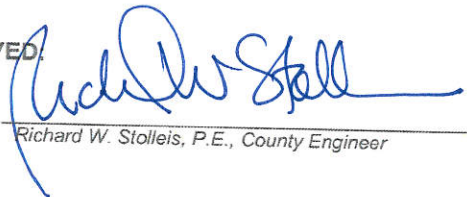
By: _____
Robert E. Hebert, County Judge

Date: _____

ATTEST:

By: _____
Laura Richard, County Clerk

APPROVED:

By:  _____
Richard W. Stolleis, P.E., County Engineer

APPROVED AS TO LEGAL FORM:

By: _____
Marcus D. Spencer, First Assistant County Attorney

AUDITOR'S CERTIFICATE

I hereby certify that funds are available in the amount of \$ _____ to accomplish and pay the obligation of Fort Bend County under this contract.

Robert Ed Sturdivant, County Auditor

 9/17/18
Date
Fort Bend County

WC 7/5/18
Initial Date
Zayo Group, LLC

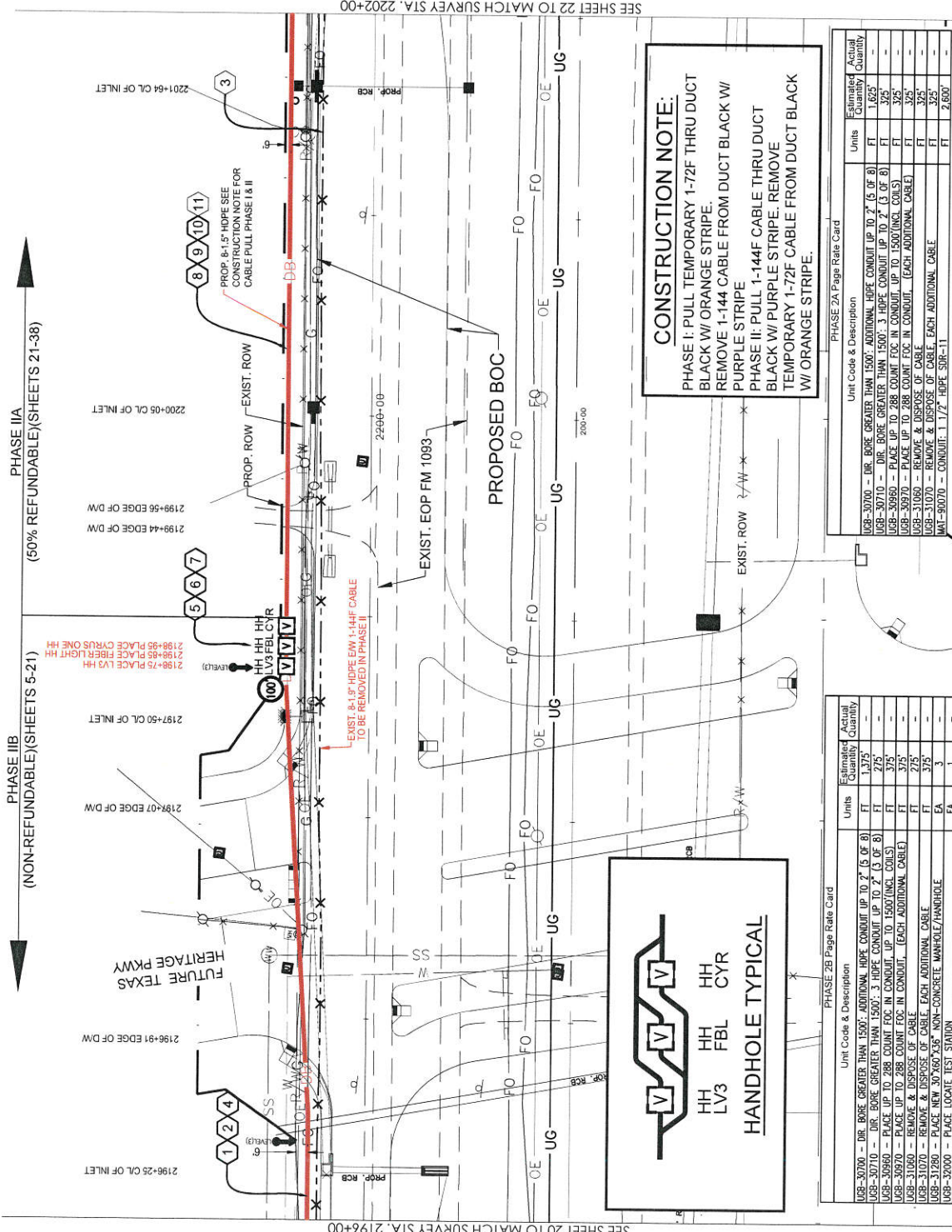
Exhibit A

Plans & Specifications

WS 9/17/18
Date
Fort Bend County

WC 4/5/18
Initial Date
Zayo Group, LLC

FULSHEAR, TX
FORT BEND COUNTY



SEE SHEET 20 TO MATCH SURVEY STA. 2196+00

SEE SHEET 22 TO MATCH SURVEY STA. 2202+00

CONSTRUCTION NOTES

- 1 CONDUIT OWNER: LEVEL (3)
CONDUIT LENGTH: 275'
CONDUIT CITY: 8
CONDUIT SIZE: 1.5"
CONDUIT TYPE: SDR-11 HOPE
NOTES: DIRECTIONAL BORE 8-1.5" HOPE TO BE E/W
1-144F CABLE (3) CABLE
- 2 CABLE FIBERS: 72F
CABLE OWNER: LEVEL (3)
CABLE LENGTH: 375'
NOTES: PULL CABLE IN NEW 1.5" HOPE, LEAVE 100' COIL
IN PROP. LEVEL (3) HH
- 3 CABLE FIBERS: 144F
CABLE OWNER: LEVEL (3)
CABLE LENGTH: 600'
NOTES: REMOVED EXIST. 144F CABLE FROM EXIST.
CONDUIT
- 4 CABLE FIBERS: 144F
CABLE OWNER: LEVEL (3)
CABLE LENGTH: 375'
NOTES: PULL CABLE IN NEW 1.5" HOPE, LEAVE 100' COIL
IN PROP. LEVEL (3) HH
- 5 LEVEL (3) HANDHOLE
NOTE: LEAVE 100' COIL IN HH
- 6 FREELIGHT HANDHOLE
NOTE
- 7 CYRUSONE HANDHOLE
NOTE
- 8 CONDUIT OWNER: LEVEL (3)
CONDUIT LENGTH: 325'
CONDUIT CITY: 8
CONDUIT SIZE: 1.5"
CONDUIT TYPE: SDR-11 HOPE
NOTES: DIRECTIONAL BORE 8-1.5" HOPE TO BE E/W
1-144F CABLE (3) CABLE
- 9 CABLE FIBERS: 72F
CABLE OWNER: LEVEL (3)
CABLE LENGTH: 325'
NOTES: PULL CABLE IN NEW 1.5" HOPE
- 10 CABLE FIBERS: 144F
CABLE OWNER: LEVEL (3)
CABLE LENGTH: 325'
NOTES: PULL CABLE IN NEW 1.5" HOPE
- 11 CABLE FIBERS: 72F
CABLE OWNER: LEVEL (3)
CABLE LENGTH: 325'
NOTES: REMOVED EXIST. 72F CABLE FROM EXIST. CONDUIT

SITE PLAN

NO	DATE	ENG. DESIGN	DRAWING	COMMENT
1	06/28/17	GPS	GPS	BRUSH CONSTRUCTION
2	03/17/18	GPS	GPS	
3				

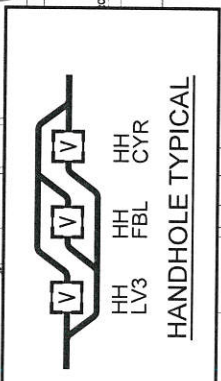


Level(3)
COMMUNICATIONS
LEVEL 3 ENGINEER, KEITH HALL
ENGINEER, 1003 WESTPARK EXTENSION PHASE II
PROJECT NUMBER: FA1093 WESTPARK EXTENSION PHASE II
LOCATION: FULSHEAR, TX

SCALE:
HORI: 1" = 50'
VERT: 1" = 10'
Not shown below
Call before pouring

DRAWING NAME: Level 3 Fulshear, TX FA1093 Westpark Extension Phase II
CONFIDENTIAL/PROPRIETARY SHEET: 21 OF 43

CONSTRUCTION NOTE:
PHASE I: PULL TEMPORARY 1-72F THRU DUCT BLACK W/ ORANGE STRIPE. REMOVE 1-144 CABLE FROM DUCT BLACK W/ PURPLE STRIPE
PHASE II: PULL 1-144F CABLE THRU DUCT BLACK W/ PURPLE STRIPE. REMOVE TEMPORARY 1-72F CABLE FROM DUCT BLACK W/ ORANGE STRIPE.



PHASE 2A Page Rate Card

Unit Code & Description	Units	Estimated Quantity	Actual Quantity
UGB-30700 - DIR. BORE GREATER THAN 1500'. ADDITIONAL HOPE CONDUIT UP TO 2" (5 OF 8)	FT	1,625'	-
UGB-30710 - DIR. BORE GREATER THAN 1500'. 3 HOPE CONDUIT UP TO 2" (3 OF 8)	FT	325'	-
UGB-30950 - PLACE UP TO 288 COUNT FIBER IN CONDUIT. UP TO 1500'(INCL. COILS)	FT	325'	-
UGB-30970 - PLACE UP TO 288 COUNT FIBER IN CONDUIT. (EACH ADDITIONAL CABLE)	FT	325'	-
UGB-31000 - REMOVE & DISPOSE OF CABLE	FT	325'	-
UGB-31070 - REMOVE & DISPOSE OF CABLE. EACH ADDITIONAL CABLE	FT	325'	-
UGB-31280 - PLACE NEW 30"x60"x36" NON-CONCRETE HANDHOLE/HANDHOLE	EA	3	-
UGB-32000 - PLACE LOCATE TEST STATION	EA	1	-
MA1-90990 - CONDUIT: 1.1/2" HOPE SDR-11	FT	2,200'	-
MA1-90990 - TIER 15 - 30"x60"x36" - WITH KNOCK-OUTS AND BACKING	EA	1	-
MA1-92080 - TEST STATIONS - WARRER POST W/ REMOVABLE TOP	EA	1	-

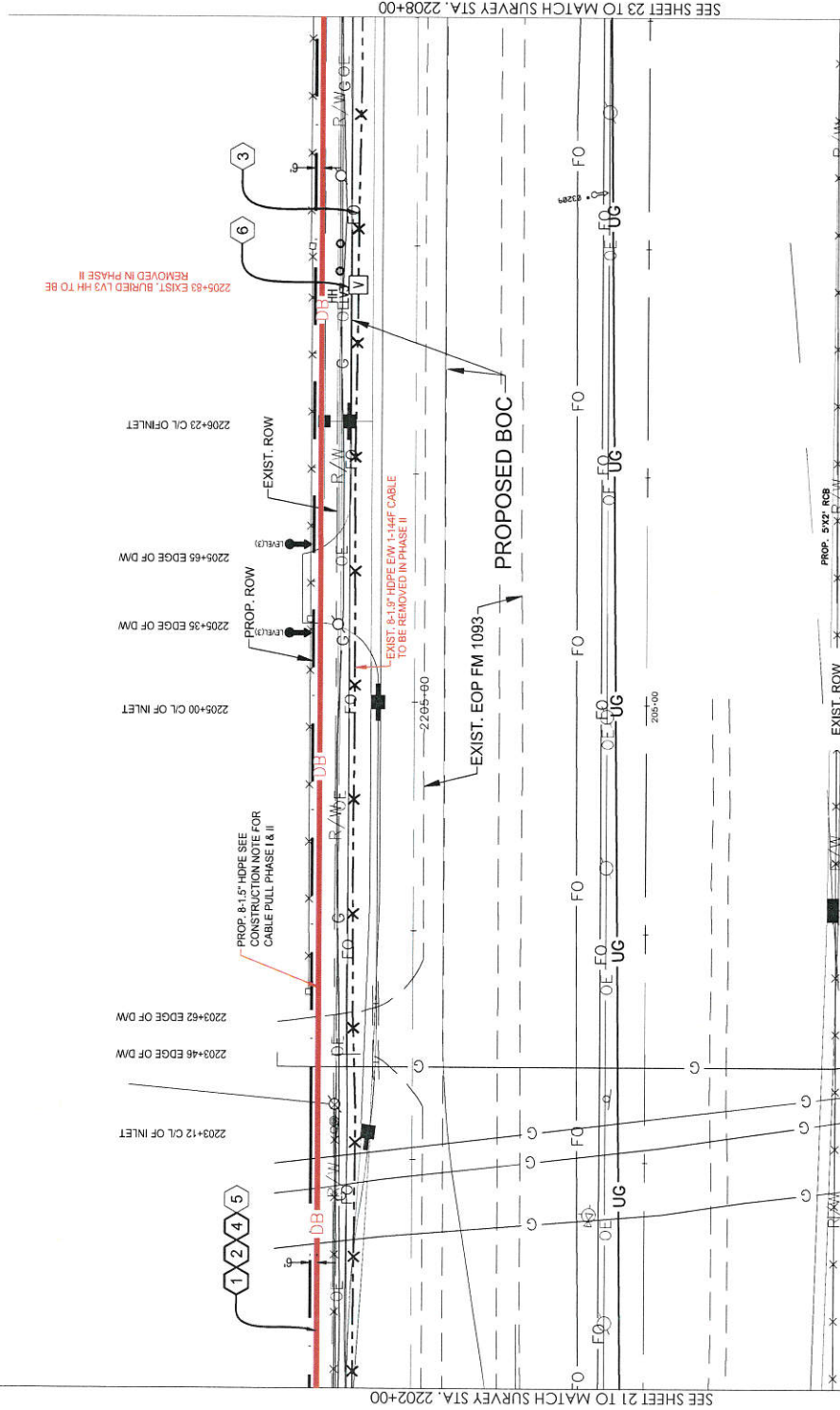
PHASE 2B Page Rate Card

Unit Code & Description	Units	Estimated Quantity	Actual Quantity
UGB-30700 - DIR. BORE GREATER THAN 1500'. ADDITIONAL HOPE CONDUIT UP TO 2" (5 OF 8)	FT	1,375'	-
UGB-30710 - DIR. BORE GREATER THAN 1500'. 3 HOPE CONDUIT UP TO 2" (3 OF 8)	FT	275'	-
UGB-30950 - PLACE UP TO 288 COUNT FIBER IN CONDUIT. UP TO 1500'(INCL. COILS)	FT	325'	-
UGB-30970 - PLACE UP TO 288 COUNT FIBER IN CONDUIT. (EACH ADDITIONAL CABLE)	FT	325'	-
UGB-31000 - REMOVE & DISPOSE OF CABLE	FT	325'	-
UGB-31070 - REMOVE & DISPOSE OF CABLE. EACH ADDITIONAL CABLE	FT	325'	-
UGB-31280 - PLACE NEW 30"x60"x36" NON-CONCRETE HANDHOLE/HANDHOLE	EA	3	-
UGB-32000 - PLACE LOCATE TEST STATION	EA	1	-
MA1-90990 - CONDUIT: 1.1/2" HOPE SDR-11	FT	2,200'	-
MA1-90990 - TIER 15 - 30"x60"x36" - WITH KNOCK-OUTS AND BACKING	EA	1	-
MA1-92080 - TEST STATIONS - WARRER POST W/ REMOVABLE TOP	EA	1	-

FULSHEAR, TX
FORT BEND COUNTY

CONSTRUCTION NOTES

- 1 CONDUIT OWNER: LEVEL (3)
CONDUIT LENGTH: 600'
CONDUIT OTC: 8"
CONDUIT SIZE: 1.5"
CONDUIT TYPE: SDR-11 HDPE
NOTES: DIRECTIONAL BORE 8'-1.5" HDPE TO BE E/W
1-144F LEVEL (3) CABLE
- 2 CABLE FIBERS: 72F
CABLE OWNER: LEVEL (3)
CABLE LENGTH: 600'
NOTES: PULL CABLE IN NEW 1.5" HDPE
- 3 CABLE OWNER: LEVEL (3)
CABLE LENGTH: 600'
NOTES: REMOVED EXIST. 144F CABLE FROM EXIST.
CONDUIT
- 4 CABLE FIBERS: 144F
CABLE OWNER: LEVEL (3)
CABLE LENGTH: 600'
NOTES: PHASE II PULL CABLE IN NEW 1.5" HDPE
- 5 CABLE FIBERS: 72F
CABLE OWNER: LEVEL (3)
CABLE LENGTH: 600'
NOTES: PHASE II REMOVED EXIST. 72F CABLE FROM EXIST.
CONDUIT
- 6 EXISTING LEVEL (3) HANDHOLE
NOTE: PHASE II TO BE REMOVED



SITE PLAN

3	03/27/18	GPS	GPS	GPS	REVISION
2	06/28/17	GPS	GPS	GPS	CONSTRUCTION
1		GPS	GPS	GPS	CONSTRUCTION
NO.	DATE	ENG.	DESIGN	DRAWING	COMMENT



LEVEL 3 ENGINEER: KEITH HALL
JOB SITE FIELD SERVICES
PROJECT NUMBER: FUL-18-001
LOCATION: FULSHEAR, TX
DRAWING NAME: Level 3 Fulshear - TX FM 1093 Westpark Extension Phase II
CONFIDENTIAL/PROPRIETARY



SCALE:
HORIZ: 1" = 50'
VERT: 1" = 10'

PHASE 2A Page Rate Card

Unit Code & Description	Units	Estimate Quantity	Actual Quantity
UGB-30700 - DIR. BORE GREATER THAN 1500'. ADDITIONAL HDPE CONDUIT UP TO 2" (3 OF 8)	FT	3,000'	-
UGB-30710 - DIR. BORE GREATER THAN 1500'. 3 HDPE CONDUIT UP TO 2" (3 OF 8)	FT	600'	-
UGB-30950 - PLACE UP TO 288 COUNT FOC IN CONDUIT. UP TO 1500'(INCL. COILS)	FT	600'	-
UGB-31050 - REMOVE & DISPOSE OF CABLE. TEACH ADDITIONAL CABLE	FT	600'	-
UGB-31060 - REMOVE & DISPOSE OF CABLE. EACH ADDITIONAL CABLE	FT	600'	-
UGB-31350 - REMOVE EXISTING 3" DIA. 288 FIBER OPTIC CABLE	EA	1	-
MH-80070 - CONDUIT 1.1/2" HDPE SDR-11	EA	4800'	-

CONSTRUCTION NOTE:
PHASE I: PULL TEMPORARY 1-72F THRU DUCT BLACK W/ ORANGE STRIPE.
REMOVE 1-144 CABLE FROM DUCT BLACK W/ PURPLE STRIPE
PHASE II: PULL 1-144F CABLE THRU DUCT BLACK W/ PURPLE STRIPE. REMOVE TEMPORARY 1-72F CABLE FROM DUCT BLACK W/ ORANGE STRIPE.

SEE SHEET 21 TO MATCH SURVEY STA. 2202+00

SEE SHEET 23 TO MATCH SURVEY STA. 2208+00

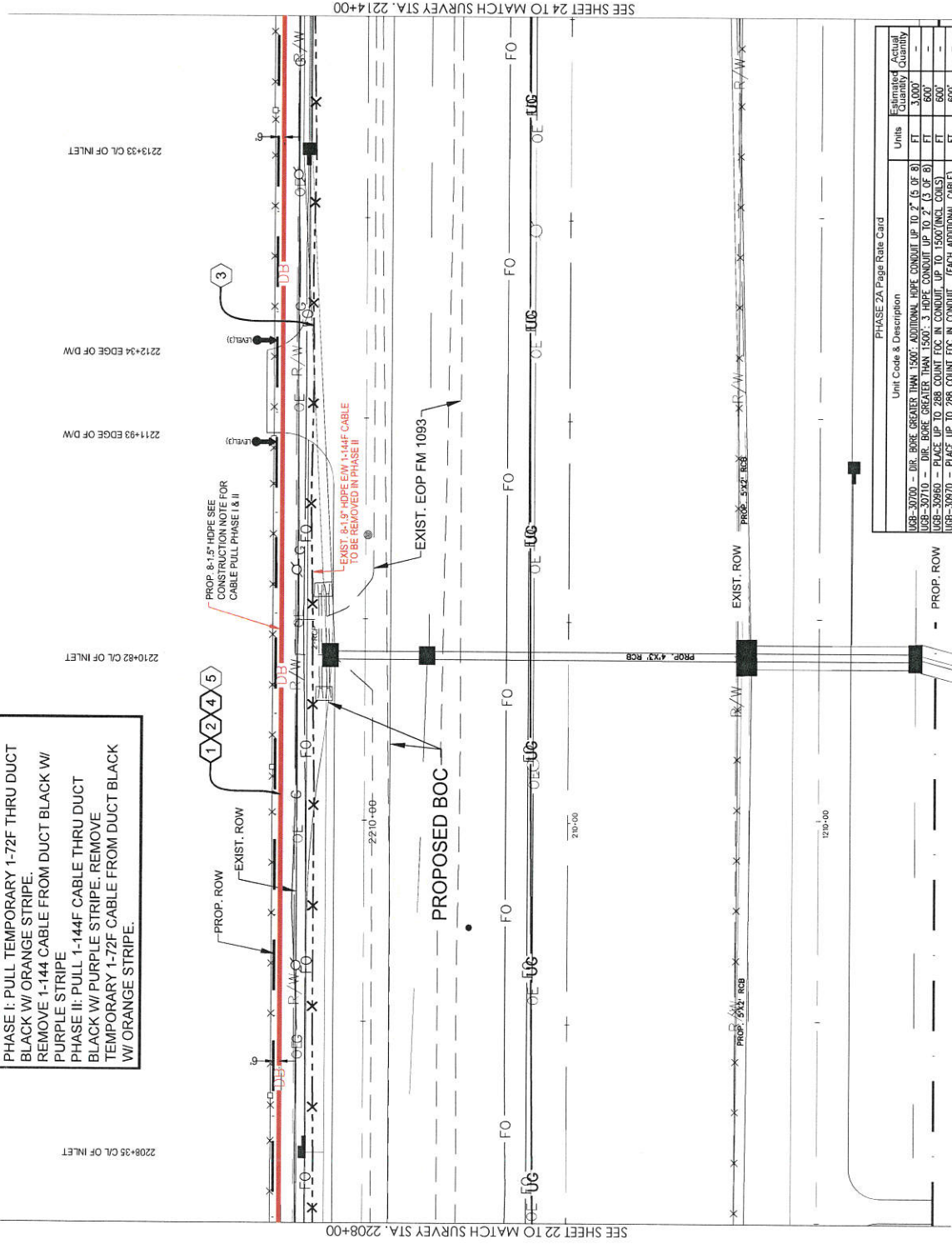
FULSHEAR, TX
FORT BEND COUNTY

CONSTRUCTION NOTE:

PHASE I: PULL TEMPORARY 1-72F THRU DUCT BLACK W/ ORANGE STRIPE.
REMOVE 1-144 CABLE FROM DUCT BLACK W/ PURPLE STRIPE
PHASE II: PULL 1-144F CABLE THRU DUCT BLACK W/ PURPLE STRIPE. REMOVE TEMPORARY 1-72F CABLE FROM DUCT BLACK W/ ORANGE STRIPE.

CONSTRUCTION NOTES

- ① CONDUIT OWNER: LEVEL (3)
CONDUIT LENGTH: 600'
CONDUIT DTY: 18"
CONDUIT SIZE: 1.5"
CONDUIT TYPE: SDR-11 HDPE
NOTES: DIRECTIONAL BORE 8'-1.5" HDPE TO BE E/W 1-144F LEVEL (3) CABLE
- ② CABLE FIBERS: 72F
CABLE OWNER: LEVEL (3)
CABLE LENGTH: 600'
NOTES: PULL CABLE IN NEW 1.5" HDPE
- ③ CABLE FIBERS: 144F
CABLE OWNER: LEVEL (3)
CABLE LENGTH: 600'
NOTES: REMOVED EXIST. 144F CABLE FROM EXIST. CONDUIT
- ④ CABLE FIBERS: 144F
CABLE OWNER: LEVEL (3)
CABLE LENGTH: 600'
NOTES: PULL CABLE IN NEW 1.5" HDPE
- ⑤ CABLE FIBERS: 72F
CABLE OWNER: LEVEL (3)
CABLE LENGTH: 600'
NOTES: REMOVED EXIST. 72F CABLE FROM EXIST. CONDUIT



SEE SHEET 24 TO MATCH SURVEY STA. 2214+00

SEE SHEET 22 TO MATCH SURVEY STA. 2208+00

SITE PLAN

NO.	DATE	ENG. DESIGN	DRAFTING	REVISION	COMMENT
1	06/24/17	GS	GS	CONSTRUCTION	
2	03/17/18	GS	GS	REVISION	



LEVEL 3 ENGINEER: KEITH HALL
ENGINEERING FIRM: GOLDEN FIELD SERVICES
LOCATION: FULSHEAR, TX
DRAWING NAME: Level 3 Fulshear, TX FM 1093 Westpark Extension Phase II
15-18-18-006
CONFIDENTIAL/PROPRIETARY



SCALE:
HORIZ: 1" = 50'
VERT: 1" = 10'

PHASE 2A Page Rate Card

Unit Code & Description	Units	Estimated Quantity	Actual Quantity
UGB-30700 - DIR. BORE GREATER THAN 1500'. ADDITIONAL HDPE CONDUIT UP TO 2' (5 OF 8)	FT	3,000'	-
UGB-30710 - DIR. BORE GREATER THAN 1500'. 3 HDPE CONDUIT UP TO 2' (3 OF 8)	FT	600'	-
UGB-30950 - PLACE UP TO 288 COUNT FOC IN CONDUIT, UP TO 1500' (INCL. CABLE)	FT	600'	-
UGB-30970 - PLACE UP TO 288 COUNT FOC IN CONDUIT, EACH ADDITIONAL CABLE	FT	600'	-
UGB-31050 - REMOVE & DISPOSE OF CABLE	FT	600'	-
UGB-31070 - REMOVE & DISPOSE OF CABLE, EACH ADDITIONAL CABLE	FT	600'	-
MAF-80070 - CONDUIT: 1 1/2" HDPE, SR-11	FT	4800'	-

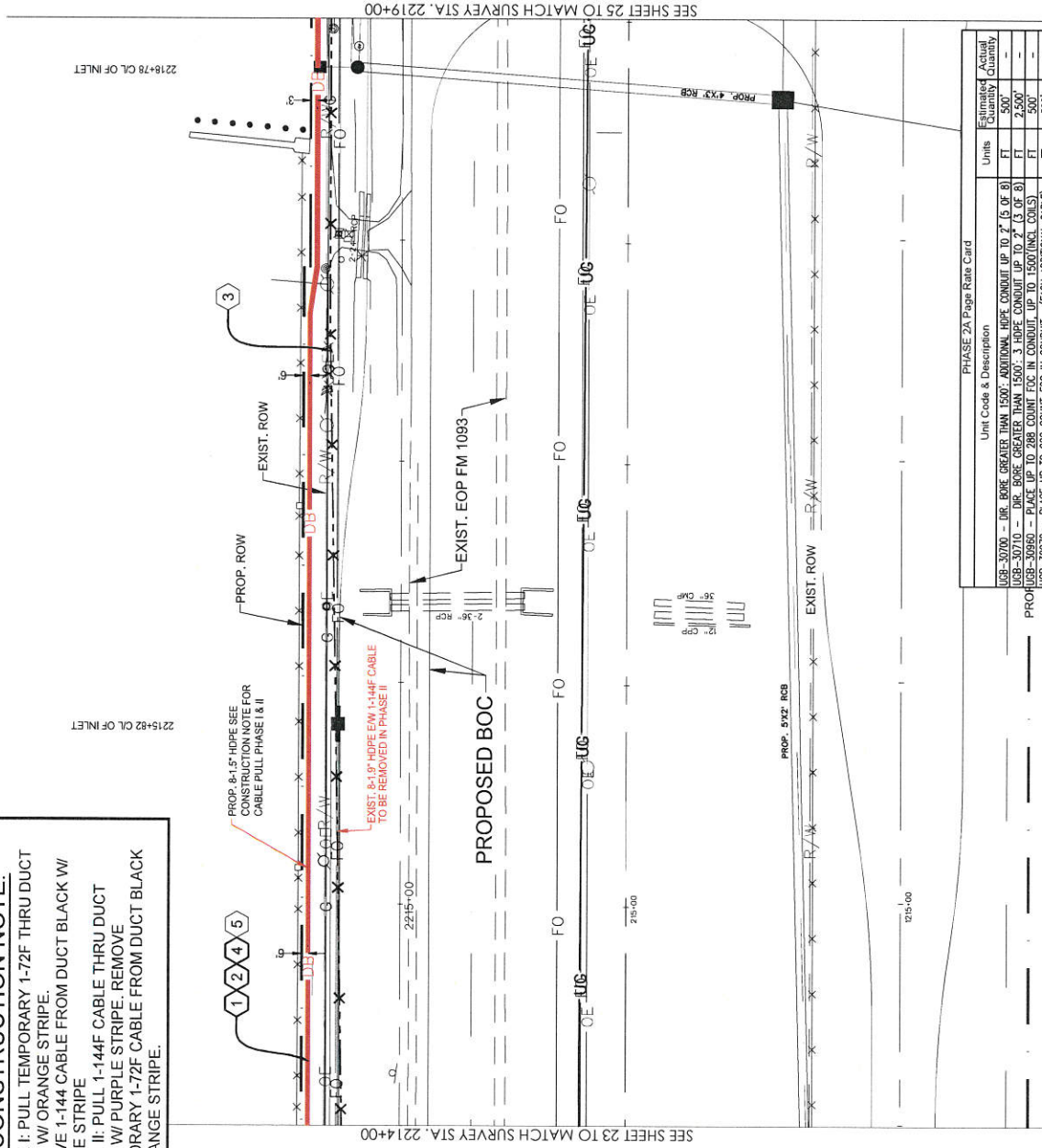
FULSHEAR, TX
FORT BEND COUNTY

CONSTRUCTION NOTE:

PHASE I: PULL TEMPORARY 1-72F THRU DUCT BLACK W/ ORANGE STRIPE.
REMOVE 1-144 CABLE FROM DUCT BLACK W/ PURPLE STRIPE
PHASE II: PULL 1-144F CABLE THRU DUCT BLACK W/ PURPLE STRIPE. REMOVE TEMPORARY 1-72F CABLE FROM DUCT BLACK W/ ORANGE STRIPE.

CONSTRUCTION NOTES

- ① CONDUIT OWNER: LEVEL (3)
CONDUIT LENGTH: 500'
CONDUIT DIA: 8"
CONDUIT TYPE: 30R-11 HDPE
NOTES: DIRECTIONAL BORE 8-1.5" HDPE TO BE E/W 1-144F LEVEL (3) CABLE
- ② CABLE FIBERS: 72F
CABLE OWNER: LEVEL (3)
CABLE LENGTH: 500'
NOTES: PULL CABLE IN NEW 1.5" HDPE
- ③ CABLE FIBERS: 144F
CABLE OWNER: LEVEL (3)
CABLE LENGTH: 500'
NOTES: REMOVED EXIST. 144F CABLE FROM EXIST. CONDUIT
- ④ CABLE FIBERS: 144F
CABLE OWNER: LEVEL (3)
CABLE LENGTH: 500'
NOTES: PULL CABLE IN NEW 1.5" HDPE
- ⑤ CABLE FIBERS: 72F
CABLE OWNER: LEVEL (3)
CABLE LENGTH: 500'
NOTES: REMOVED EXIST. 72F CABLE FROM EXIST. CONDUIT



SEE SHEET 23 TO MATCH SURVEY STA. 2214+00

2215+82 CL. OF INLET

2215+82 CL. OF INLET

PHASE 2A Page Rate Card

Unit Code & Description	Units	Estimated Quantity	Actual Quantity
UGB-30700 - DIR. BORE GREATER THAN 1500'. ADDITIONAL HDPE CONDUIT UP TO 2' (5 OF 8)	FT	500'	-
UGB-30710 - DIR. BORE GREATER THAN 1500'. 3 HDPE CONDUIT UP TO 2' (3 OF 8)	FT	2,500'	-
UGB-30950 - PLACE UP TO 288 COUNT FOC IN CONDUIT. UP TO 1500' (INCL. COILS)	FT	500'	-
UGB-30970 - PLACE UP TO 288 COUNT FOC IN CONDUIT. (EACH ADDITIONAL CABLE)	FT	500'	-
UGB-31060 - REMOVE & DISPOSE OF CABLE	FT	500'	-
UGB-30720 - REMOVE & DISPOSE OF CABLE, EACH ADDITIONAL CABLE	FT	500'	-
MA-30070 - CONDUIT 1 1/2" HDPE 30R-11	FT	4000'	-



SCALE:
HORIZ: 1" = 50'
VERT: 1" = 10'

SITE PLAN

NO.	DATE	ENG.	DESIGN	DRAWING	REVISION	CONSTRUCTION	COMMENT
1	06/28/17	GS	GS	GS			
2	03/7/18	GS	GS	GS			

Level(3)
COMMUNICATIONS

LEVEL 3 ENGINEER: KEITH HALL
PROJECT NUMBER: 17033 WESTFAIR EXTENSION PHASE II
LOCATION: FULSHEAR, TX

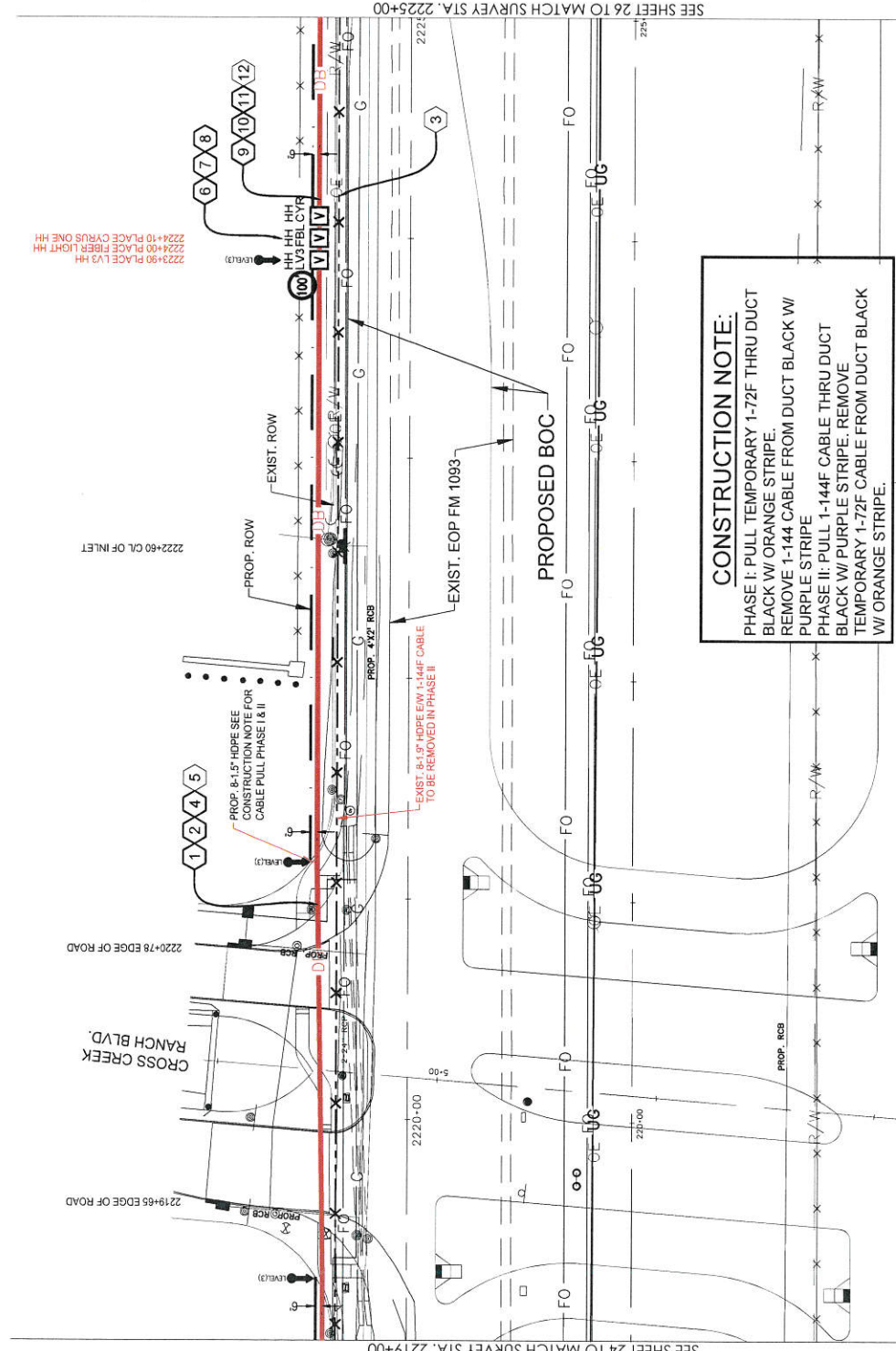
DRAWING NAME: Level 3 Fulshear, TX FM 1093 Westfair Extension Phase II
CONFIDENTIAL/PROPRIETARY

SHEET: 24 OF 43

FULSHEAR, TX
FORT BEND COUNTY

CONSTRUCTION NOTES

- 1 CONDUIT OWNER LEVEL (3)
CONDUIT LENGTH: 400'
CONDUIT QTY: 8
CONDUIT SIZE: 1.5"
CONDUIT TYPE: SMA-11 HOPE
NOTES: DIRECTIONAL BORE 8-1.5" HOPE TO BE E/W
1-144F LEVEL (3) CABLE
- 2 CABLE FEEDERS: 72F
CABLE OWNER LEVEL (3)
CABLE LENGTH: 560'
NOTES: PULL CABLE IN NEW 1.5" HOPE W/ 100' COIL IN
LEVEL 3 HH
CABLE FEEDERS: 144F
CABLE OWNER LEVEL (3)
CABLE LENGTH: 600'
NOTES: REMOVED EXIST. 144F CABLE FROM EXIST.
CONDUIT
CABLE FEEDERS: 144F
CABLE OWNER LEVEL (3)
CABLE LENGTH: 560'
NOTES: PHASE II PULL CABLE IN NEW 1.5" HOPE W/ 100'
IN LEVEL 3 HH
CABLE FEEDERS: 72F
CABLE OWNER LEVEL (3)
CABLE LENGTH: 560'
NOTES: PHASE II REMOVED EXIST. 72F CABLE FROM EXIST.
CONDUIT
PHASE II HANDHOLE
NOTE: LEAVE 100' COIL IN HH
NOTE
- 3 CABLE FEEDERS: 72F
CABLE OWNER LEVEL (3)
CABLE LENGTH: 560'
NOTES: PULL CABLE IN NEW 1.5" HOPE W/ 100' COIL IN
LEVEL 3 HH
CABLE FEEDERS: 144F
CABLE OWNER LEVEL (3)
CABLE LENGTH: 600'
NOTES: REMOVED EXIST. 144F CABLE FROM EXIST.
CONDUIT
CABLE FEEDERS: 144F
CABLE OWNER LEVEL (3)
CABLE LENGTH: 560'
NOTES: PHASE II PULL CABLE IN NEW 1.5" HOPE W/ 100'
IN LEVEL 3 HH
CABLE FEEDERS: 72F
CABLE OWNER LEVEL (3)
CABLE LENGTH: 560'
NOTES: PHASE II REMOVED EXIST. 72F CABLE FROM EXIST.
CONDUIT
PHASE II HANDHOLE
NOTE: LEAVE 100' COIL IN HH
NOTE
- 4 CABLE FEEDERS: 72F
CABLE OWNER LEVEL (3)
CABLE LENGTH: 560'
NOTES: PULL CABLE IN NEW 1.5" HOPE W/ 100' COIL IN
LEVEL 3 HH
CABLE FEEDERS: 144F
CABLE OWNER LEVEL (3)
CABLE LENGTH: 600'
NOTES: REMOVED EXIST. 144F CABLE FROM EXIST.
CONDUIT
CABLE FEEDERS: 144F
CABLE OWNER LEVEL (3)
CABLE LENGTH: 560'
NOTES: PHASE II PULL CABLE IN NEW 1.5" HOPE W/ 100'
IN LEVEL 3 HH
CABLE FEEDERS: 72F
CABLE OWNER LEVEL (3)
CABLE LENGTH: 560'
NOTES: PHASE II REMOVED EXIST. 72F CABLE FROM EXIST.
CONDUIT
PHASE II HANDHOLE
NOTE: LEAVE 100' COIL IN HH
NOTE
- 5 CABLE FEEDERS: 72F
CABLE OWNER LEVEL (3)
CABLE LENGTH: 560'
NOTES: PULL CABLE IN NEW 1.5" HOPE W/ 100' COIL IN
LEVEL 3 HH
CABLE FEEDERS: 144F
CABLE OWNER LEVEL (3)
CABLE LENGTH: 600'
NOTES: REMOVED EXIST. 144F CABLE FROM EXIST.
CONDUIT
CABLE FEEDERS: 144F
CABLE OWNER LEVEL (3)
CABLE LENGTH: 560'
NOTES: PHASE II PULL CABLE IN NEW 1.5" HOPE W/ 100'
IN LEVEL 3 HH
CABLE FEEDERS: 72F
CABLE OWNER LEVEL (3)
CABLE LENGTH: 560'
NOTES: PHASE II REMOVED EXIST. 72F CABLE FROM EXIST.
CONDUIT
PHASE II HANDHOLE
NOTE: LEAVE 100' COIL IN HH
NOTE
- 6 CABLE FEEDERS: 72F
CABLE OWNER LEVEL (3)
CABLE LENGTH: 560'
NOTES: PULL CABLE IN NEW 1.5" HOPE W/ 100' COIL IN
LEVEL 3 HH
CABLE FEEDERS: 144F
CABLE OWNER LEVEL (3)
CABLE LENGTH: 600'
NOTES: REMOVED EXIST. 144F CABLE FROM EXIST.
CONDUIT
CABLE FEEDERS: 144F
CABLE OWNER LEVEL (3)
CABLE LENGTH: 560'
NOTES: PHASE II PULL CABLE IN NEW 1.5" HOPE W/ 100'
IN LEVEL 3 HH
CABLE FEEDERS: 72F
CABLE OWNER LEVEL (3)
CABLE LENGTH: 560'
NOTES: PHASE II REMOVED EXIST. 72F CABLE FROM EXIST.
CONDUIT
PHASE II HANDHOLE
NOTE: LEAVE 100' COIL IN HH
NOTE
- 7 FREIGHT HANDHOLE
NOTE
- 8 CYRUSONE HANDHOLE
NOTE
- 9 CONDUIT OWNER LEVEL (3)
CONDUIT LENGTH: 110'
CONDUIT QTY: 6
CONDUIT SIZE: 1.5"
CONDUIT TYPE: SMA-11 HOPE
NOTES: DIRECTIONAL BORE 8-1.5" HOPE TO BE E/W
1-144F LEVEL (3) CABLE
- 10 CABLE FEEDERS: 72F
CABLE OWNER LEVEL (3)
CABLE LENGTH: 110'
NOTES: PULL CABLE IN NEW 1.5" HOPE
- 11 CABLE FEEDERS: 144F
CABLE OWNER LEVEL (3)
CABLE LENGTH: 110'
NOTES: PULL CABLE IN NEW 1.5" HOPE
- 12 CABLE FEEDERS: 72F
CABLE OWNER LEVEL (3)
CABLE LENGTH: 110'
NOTES: REMOVED EXIST. 72F CABLE FROM EXIST. CONDUIT



SITE PLAN

NO.	DATE	ENG. DESIGN	DRAFTING	CONSTRUCTION	REVISION
1	06/28/17	GFS	GFS	GFS	CONSTRUCTION
2	03/27/18	GFS	GFS	GFS	CONSTRUCTION
3	03/27/18	GFS	GFS	GFS	CONSTRUCTION



LEVEL 3 ENGINEERING & ARCHITECTURE
ENGINEERING FIRM: GOLDEN FIELD SERVICES
PROJECT NUMBER: FM 1083 WESTPARK EXTENSION PHASE II
LOCATION: FULSHEAR, TX
DRAWING NAME: Level 3 - Fulshear, TX FM 1083 Westpark Extension Phase II
CONFIDENTIAL/PROPRIETARY SHEET: 25 OF 43

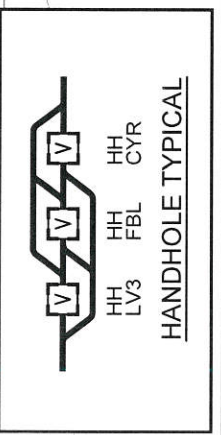


SCALE:
HORIZ: 1" = 90'
VERT: 1" = 10'

PHASE 2A Page Rate Card

Unit Code & Description	Units	Estimate Quantity	Actual Quantity
UGB-30700 - DIR. BORE GREATER THAN 1500'. ADDITIONAL HOPE CONDUIT UP TO 2" (5 OF 8)	FT	3,000'	-
UGB-30710 - DIR. BORE GREATER THAN 1500'. 3 HOPE CONDUIT UP TO 2" (3 OF 8)	FT	600'	-
UGB-30960 - PLACE UP TO 288 COUNT FOC IN CONDUIT, UP TO 1500' (INCL. COILS)	FT	700'	-
UGB-30970 - PLACE UP TO 288 COUNT FOC IN CONDUIT, (EACH ADDITIONAL CABLE)	FT	700'	-
UGB-31060 - REMOVE & DISPOSE OF CABLE, EACH ADDITIONAL CABLE	FT	600'	-
UGB-31070 - REMOVE & DISPOSE OF CABLE, EACH ADDITIONAL CABLE	EA	3	-
UGB-32400 - PLACE LOCAL TEST STATION	EA	1	-
MAI-90070 - CONDUIT: 1 1/2" HOPE SMA-11	EA	4800'	-
MAI-90080 - IER L5 - 30"X60"X36" - WITH KNOCK-OUTS AND BACKING	EA	1	-
MAI-92080 - TEST STATIONS - MARKER POST W/ REMOVABLE TOP	EA	1	-

CONSTRUCTION NOTE:
PHASE I: PULL TEMPORARY 1-72F THRU DUCT BLACK W/ ORANGE STRIPE. REMOVE 1-144 CABLE FROM DUCT BLACK W/ PURPLE STRIPE
PHASE II: PULL 1-144F CABLE THRU DUCT BLACK W/ PURPLE STRIPE. REMOVE TEMPORARY 1-72F CABLE FROM DUCT BLACK W/ ORANGE STRIPE.



SEE SHEET 24 TO MATCH SURVEY STA. 2219+00

SEE SHEET 26 TO MATCH SURVEY STA. 2225+00

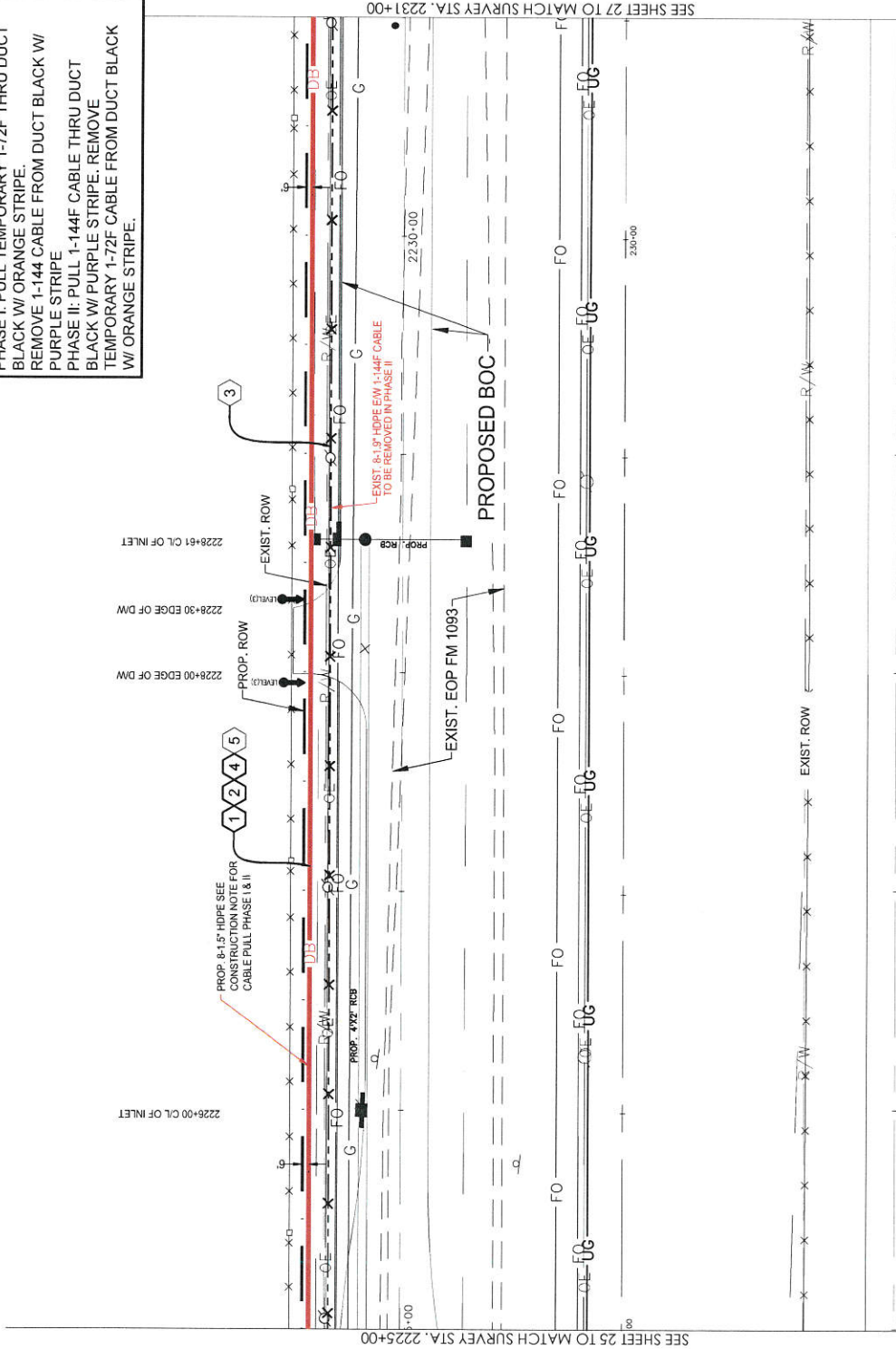
FULSHEAR, TX
FORT BEND COUNTY

CONSTRUCTION NOTE:

PHASE I: PULL TEMPORARY 1-72F THRU DUCT BLACK W/ ORANGE STRIPE.
REMOVE 1-144 CABLE FROM DUCT BLACK W/ PURPLE STRIPE
PHASE II: PULL 1-144F CABLE THRU DUCT BLACK W/ PURPLE STRIPE. REMOVE TEMPORARY 1-72F CABLE FROM DUCT BLACK W/ ORANGE STRIPE.

CONSTRUCTION NOTES

- ① CONDUIT OWNER: LEVEL (3)
CABLE LENGTH: 600'
CONDUIT TYPE: 1.5"
NOTES: DIRECTIONAL BORE 8-1.5" HOPE TO BE E/W 1-144F LEVEL (3) CABLE
- ② CABLE FIBERS: 72F
CABLE OWNER: LEVEL (3)
CABLE LENGTH: 600'
NOTES: PULL CABLE IN NEW 1.5" HOPE
- ③ CABLE FIBERS: 144F
CABLE OWNER: LEVEL (3)
CABLE LENGTH: 600'
NOTES: REMOVED EXIST. 144F CABLE FROM EXIST. CONDUIT
- ④ CABLE FIBERS: 144F
CABLE OWNER: LEVEL (3)
CABLE LENGTH: 600'
NOTES: PHASE I PULL CABLE IN NEW 1.5" HOPE
- ⑤ CABLE FIBERS: 72F
CABLE OWNER: LEVEL (3)
CABLE LENGTH: 600'
NOTES: PHASE II REMOVED EXIST. 72F CABLE FROM EXIST. CONDUIT



SEE SHEET 25 TO MATCH SURVEY STA. 2225+00

SEE SHEET 27 TO MATCH SURVEY STA. 2231+00

SITE PLAN



Level 3 ENGINEER, KEITH HALL
ENGINEERING FIRM: GOLDEN FIELD SERVICES
PROJECT NUMBER: FM 1093 WESTPARK EXTENSION PHASE II
LOCATION: FULSHEAR, TX
DRAWING NAME: Level 3 Phase II FM 1093 Westpark Extension Phase II
12-21-2019
CONFIDENTIAL/PROPRIETARY

SCALE: HORIZ: 1" = 50'
VERT: 1" = 10'

NO.	DATE	ENG. DESIGN	DRAWING	REVISION	COMMENTS
3	03/27/19	GPS	GPS		
1	06/27/17	GPS	GPS		

PHASE 2A Page Rate Card

Unit Code & Description	Units	Estimated Quantity	Actual Quantity
UGB-30700 - DIR. BORE GREATER THAN 1500'. ADDITIONAL HOPE CONDUIT UP TO 2" (5 OF 8)	FT	3,000'	-
UGB-30710 - DIR. BORE GREATER THAN 1500'. 3 HOPE CONDUIT UP TO 2" (3 OF 8)	FT	600'	-
UGB-30960 - PLACE UP TO 288 COUNT FOC IN CONDUIT. (EACH ADDITIONAL CABLE)	FT	600'	-
UGB-30970 - PLACE UP TO 288 COUNT FOC IN CONDUIT. (EACH ADDITIONAL CABLE)	FT	600'	-
UGB-31060 - REMOVE & DISPOSE OF CABLE	FT	600'	-
UGB-31070 - REMOVE & DISPOSE OF CABLE. EACH ADDITIONAL CABLE	FT	600'	-
WAI-50070 - CONDUIT: 1 1/2" HOPE SDR-11	FT	4800'	-

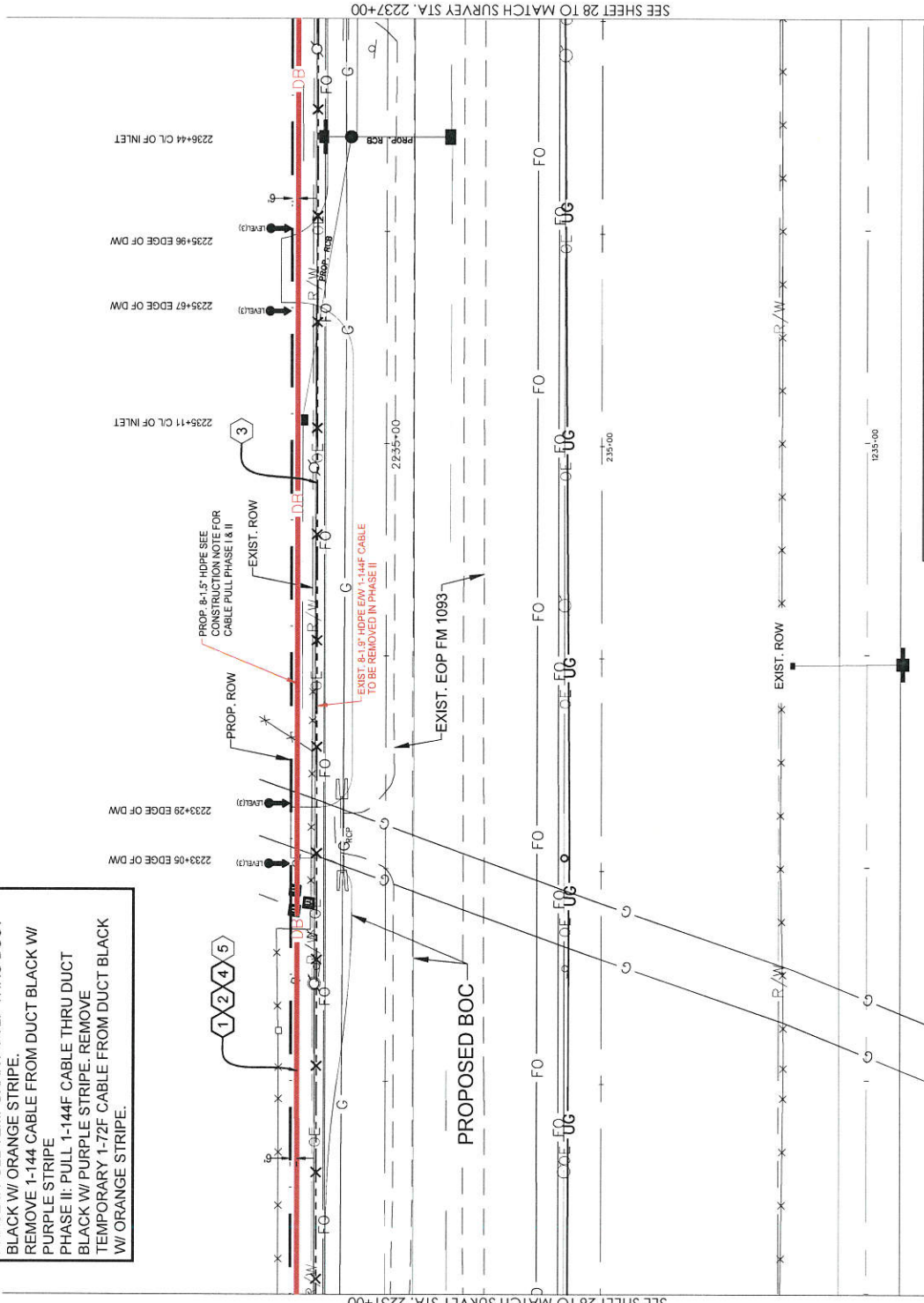
FULSHEAR, TX
FORT BEND COUNTY

CONSTRUCTION NOTE:

PHASE I: PULL TEMPORARY 1-72F THRU DUCT BLACK W/ ORANGE STRIPE.
REMOVE 1-144 CABLE FROM DUCT BLACK W/ PURPLE STRIPE
PHASE II: PULL 1-144F CABLE THRU DUCT BLACK W/ PURPLE STRIPE. REMOVE TEMPORARY 1-72F CABLE FROM DUCT BLACK W/ ORANGE STRIPE.

CONSTRUCTION NOTES

- ① CONDUIT OWNER: LEVEL (3)
CONDUIT LENGTH: 600'
CONDUIT QTY: 8
CONDUIT SIZE: 1.5"
NOTES: DIRECTIONAL BORE 8--1.5" HOPE TO BE E/W 1-144F LEVEL (3) CABLE
- ② CABLE FIBERS: 72F
CABLE OWNER: LEVEL (3)
CABLE LENGTH: 600'
NOTES: PULL CABLE IN NEW 1.5" HOPE
- ③ CABLE FIBERS: 144F
CABLE OWNER: LEVEL (3)
CABLE LENGTH: 600'
NOTES: REMOVED EXIST. 144F CABLE FROM EXIST. CONDUIT
- ④ CABLE FIBERS: 144F
CABLE OWNER: LEVEL (3)
CABLE LENGTH: 600'
NOTES: PHASE II PULL CABLE IN NEW 1.5" HOPE
- ⑤ CABLE FIBERS: 72F
CABLE OWNER: LEVEL (3)
CABLE LENGTH: 600'
NOTES: PHASE II REMOVED EXIST. 72F CABLE FROM EXIST. CONDUIT



SEE SHEET 28 TO MATCH SURVEY STA. 2237+00

SEE SHEET 26 TO MATCH SURVEY STA. 2231+00

SITE PLAN

NO.	DATE	ENG. DESIGN	DRAFTING	REVISION	CONSTRUCTION	COMMENT
1	06/28/17	GPS	GPS			
2	03/7/18	GPS	GPS			



SCALE: 50'
HOR: 1" = 50'
VERT: 1" = 10'

PHASE 2A Page Rate Card

Unit Code & Description	Units	Estimate Quantity	Actual Quantity
UGB-30700 - DIR. BORE GREATER THAN 1500'. ADDITIONAL HOPE CONDUIT UP TO 2" (5 OF 8)	FT	3,000'	-
UGB-30710 - DIR. BORE GREATER THAN 1500'. 3 HOPE CONDUIT UP TO 2" (3 OF 8)	FT	600'	-
UGB-30960 - PLACE UP TO 288 COUNT FOC IN CONDUIT. UP TO 1500' (INCL COILS)	FT	600'	-
UGB-30970 - PLACE UP TO 288 COUNT FOC IN CONDUIT. (EACH ADDITIONAL CABLE)	FT	600'	-
UGB-31060 - REMOVE & DISPOSE OF CABLE	FT	600'	-
UGB-31070 - REMOVE & DISPOSE OF CABLE, EACH ADDITIONAL CABLE	FT	600'	-
WAT-90070 - CONDUIT: 1 1/2" HOPE SUR-11	FT	4800'	-

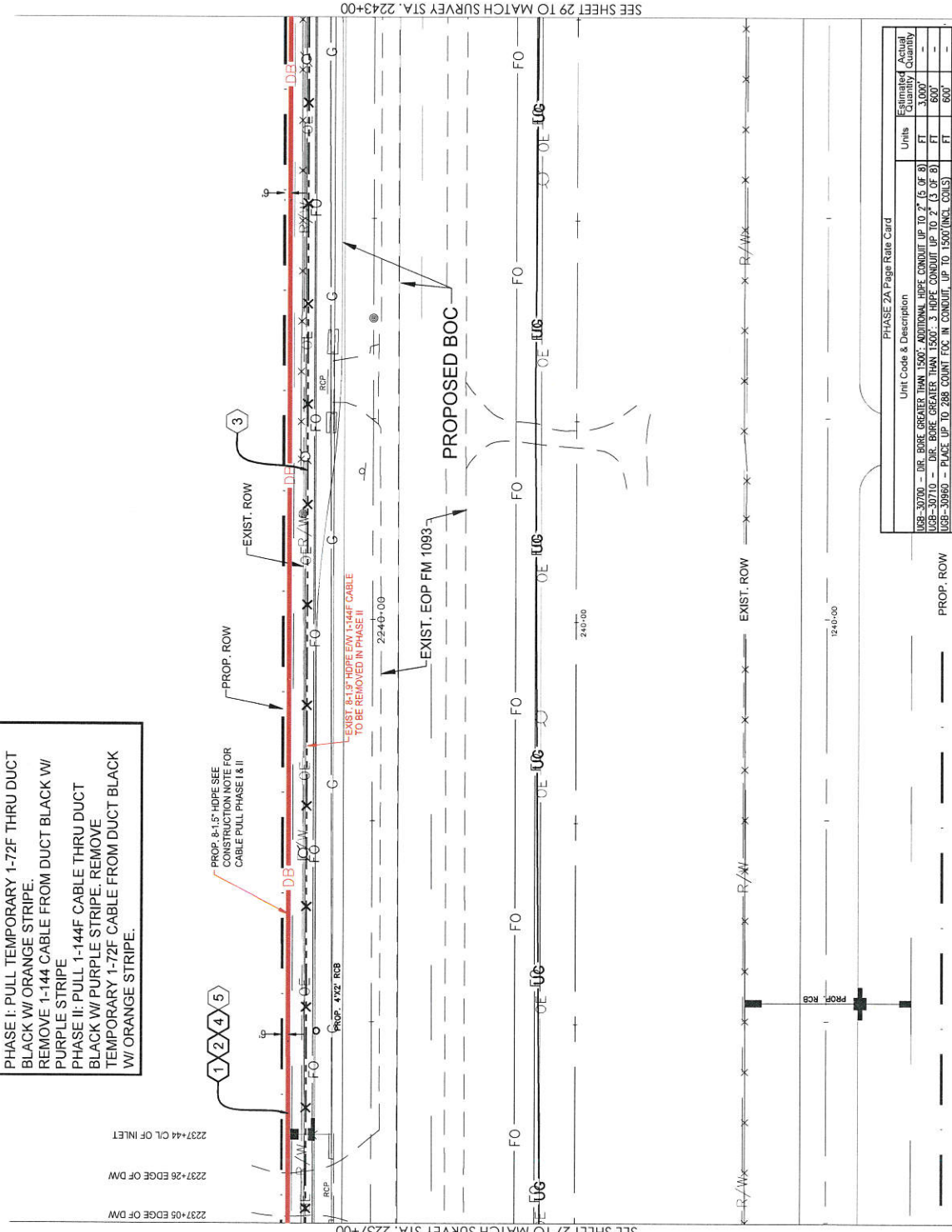
FULSHEAR, TX
FORT BEND COUNTY

CONSTRUCTION NOTE:

PHASE I: PULL TEMPORARY 1-72F THRU DUCT BLACK W/ ORANGE STRIPE.
REMOVE 1-144 CABLE FROM DUCT BLACK W/ PURPLE STRIPE
PHASE II: PULL 1-144F CABLE THRU DUCT BLACK W/ PURPLE STRIPE. REMOVE TEMPORARY 1-72F CABLE FROM DUCT BLACK W/ ORANGE STRIPE.

CONSTRUCTION NOTES

- 1 CONDUIT OWNER: LEVEL (3)
CONDUIT LENGTH: 600'
CONDUIT QTY: 8
CONDUIT SIZE: 1.5"
CONDUIT TYPE: SRW-11 HDPE
NOTES: DIRECTIONAL BORE 8"-1.5" HDPE TO BE E/W 1-144F LEVEL (3) CABLE
- 2 CABLE FIBERS: 72F
CABLE OWNER: LEVEL (3)
CABLE LENGTH: 600'
NOTES: PULL CABLE IN NEW 1.5" HDPE
- 3 CABLE FIBERS: 144F
CABLE OWNER: LEVEL (3)
CABLE LENGTH: 600'
NOTES: REMOVED EXIST. 144F CABLE FROM EXIST. CONDUIT
- 4 CABLE FIBERS: 144F
CABLE OWNER: LEVEL (3)
CABLE LENGTH: 600'
NOTES: PULL CABLE IN NEW 1.5" HDPE
- 5 CABLE FIBERS: 72F
CABLE OWNER: LEVEL (3)
CABLE LENGTH: 600'
NOTES: REMOVED EXIST. 72F CABLE FROM EXIST. CONDUIT



SEE SHEET 29 TO MATCH SURVEY STA. 2243+00

SEE SHEET 27 TO MATCH SURVEY STA. 2237+00

PHASE 2A Page Rate Card

Unit Code & Description	Units	Estimated Quantity	Actual Quantity
UGB-30700 - DIR. BORE GREATER THAN 1500'. ADDITIONAL HDPE CONDUIT UP TO 2' (5 OF 8)	FT	3,000'	-
UGB-30710 - DIR. BORE GREATER THAN 1500'. 3 HDPE CONDUIT UP TO 2' (3 OF 8)	FT	600'	-
UGB-30960 - PLACE UP TO 288 COUNT FOC IN CONDUIT. UP TO 1500'(INCL. COILS)	FT	600'	-
UGB-31020 - PLACE UP TO 288 COUNT FOC IN CONDUIT. (EACH ADDITIONAL CABLE)	FT	800'	-
UGB-31070 - REMOVE & DISPOSE OF CABLE EACH ADDITIONAL CABLE	FT	800'	-
MAI-80070 - CONDUIT: 1 1/2" HDPE SRW-11	FT	4800'	-

SITE PLAN



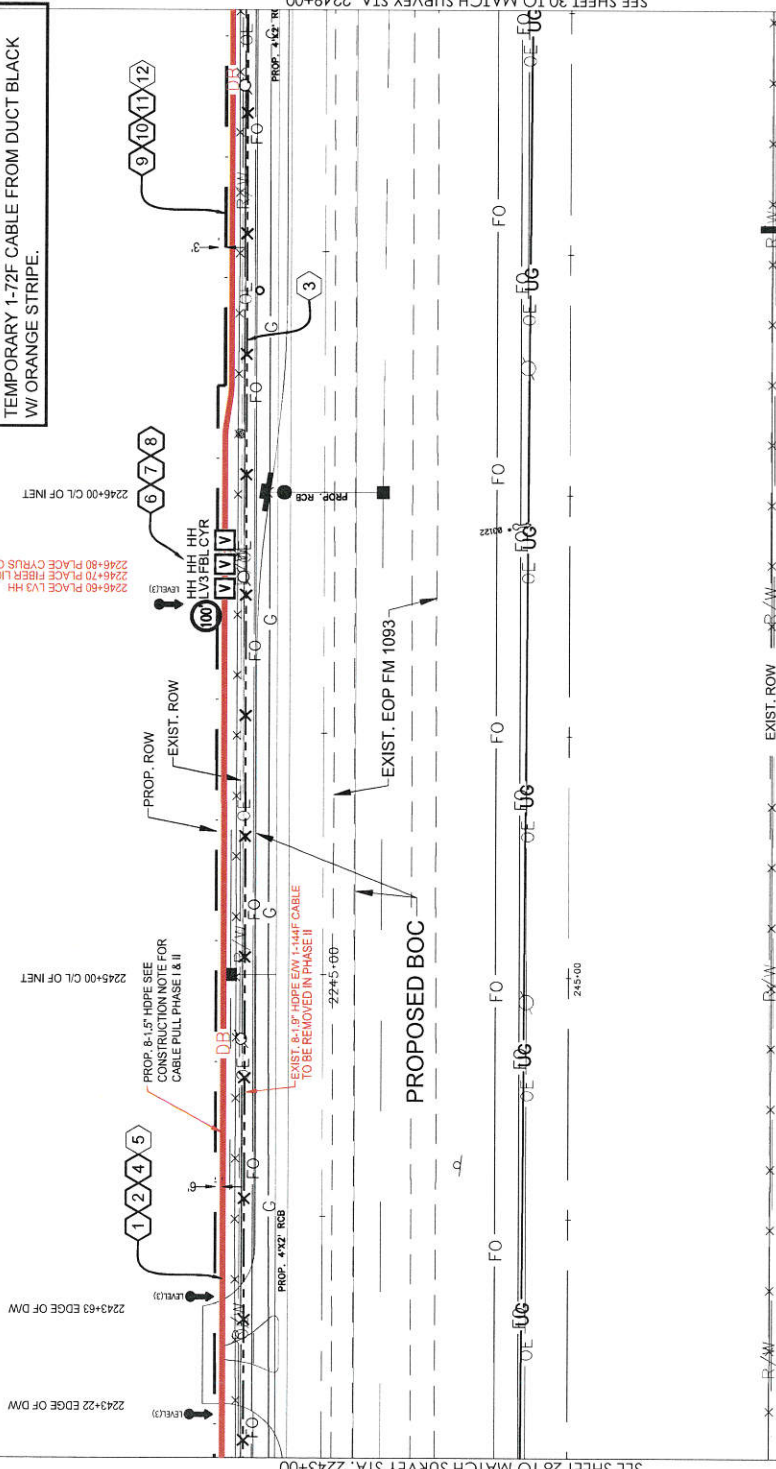
LEVEL 3 ENGINEERING & CONSULTANTS
ENGINEERING FIRM: GOLDEN FIELD SERVICES
PROJECT NUMBER: FM 1093 WESTPARK EXTENSION PHASE II
LOCATION: FULSHEAR, TX
DRAWING NAME: Level 3 Fulshear, TX, FM 1093 Westpark Extension Phase II
CONFIDENTIAL/PROPRIETARY
SHEET: 28 OF 43



SCALE:
HORI: 1" = 90'
VERT: 1" = 10'

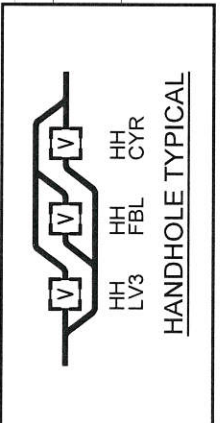
FULSHEAR, TX
FORT BEND COUNTY

CONSTRUCTION NOTE:
 PHASE I: PULL TEMPORARY 1-72F THRU DUCT BLACK W/ ORANGE STRIPE.
 REMOVE 1-144 CABLE FROM DUCT BLACK W/ PURPLE STRIPE
 PHASE II: PULL 1-144F CABLE THRU DUCT BLACK W/ PURPLE STRIPE. REMOVE TEMPORARY 1-72F CABLE FROM DUCT BLACK W/ ORANGE STRIPE.



PHASE 2A Page Rate Card

Unit Code & Description	Units	Estimated Quantity	Actual Quantity
UGS-30700 - DIE BORE GREATER THAN 1500' - ADDITIONAL HDPE CONDUIT UP TO 2" (5 OF 8)	FT	3,000'	-
UGS-30710 - DIE BORE GREATER THAN 1500' - 3 HDPE CONDUIT UP TO 2" (3 OF 8)	FT	600'	-
UGS-30940 - PLACE UP TO 288 COUNT FIBER IN CONDUIT, UP TO 1500'(INCL COILS)	FT	700'	-
UGS-30970 - PLACE UP TO 288 COUNT FIBER IN CONDUIT, (TEACH ADDITIONAL CABLE)	FT	700'	-
UGS-31000 - REMOVE & DISPOSE OF CABLE - EACH ADDITIONAL CABLE	FT	600'	-
UGS-31200 - PLACE NEW 30"x60"x36" NON-CONCRETE HANDHOLE/HANDHOLE	EA	7	-
UGS-32000 - PLACE LOCATE TEST STATION	EA	1	-
MA1-90070 - CONDUIT 1 1/2" HDPE SRB-11	FT	4800'	-
MA1-90980 - TER 15 - 30'x60'x36" - WITH KNOCK-OUTS AND BACKING	EA	1	-
MA1-92080 - TEST STATIONS - MARKER POST W/ REMOVABLE TOP	EA	1	-



- CONSTRUCTION NOTES**
- CONDUIT OWNER LEVEL (3)
 CONDUIT LENGTH: 360'
 CONDUIT QTY: 8
 CONDUIT SIZE: 1.5"
 CONDUIT TYPE: SRB-11 HDPE
 NOTES: DIRECTIONAL BORE 8-1.5" HDPE TO BE E/W 1-144F LEVEL (3) CABLE
 - CABLE FIBERS: 72F
 CABLE OWNER LEVEL (3)
 CABLE LENGTH: 480'
 NOTES: PULL CABLE IN NEW 1.5" HDPE W/ 100' COIL IN LEVEL 3 HH.
 - CABLE FIBERS: 144F
 CABLE OWNER LEVEL (3)
 CABLE LENGTH: 360'
 NOTES: REMOVED EXIST. 144F CABLE FROM EXIST. CONDUIT
 - CABLE FIBERS: 144F
 CABLE OWNER LEVEL (3)
 CABLE LENGTH: 480'
 NOTES: PULL CABLE IN NEW 1.5" HDPE W/ 100' COIL IN LEVEL 3 HH.
 - CABLE FIBERS: 72F
 CABLE OWNER LEVEL (3)
 CABLE LENGTH: 480'
 NOTES: PHASE I REMOVED EXIST. 72F CABLE FROM EXIST. CONDUIT
 - LEVEL (3) HANDHOLE
 NOTE: LEAVE 100' COIL IN HH
 - FREIGHT HANDHOLE
 NOTE
 - CRUSONE HANDHOLE
 NOTE
 - CONDUIT OWNER LEVEL (3)
 CONDUIT QTY: 240'
 CONDUIT SIZE: 1.5"
 CONDUIT TYPE: SRB-11 HDPE
 NOTES: DIRECTIONAL BORE 8-1.5" HDPE TO BE E/W 1-144F LEVEL (3) CABLE
 - CABLE FIBERS: 72F
 CABLE OWNER LEVEL (3)
 CABLE LENGTH: 240'
 NOTES: PULL CABLE IN NEW 1.5" HDPE
 - CABLE FIBERS: 144F
 CABLE OWNER LEVEL (3)
 CABLE LENGTH: 240'
 NOTES: PHASE II PULL CABLE IN NEW 1.5" HDPE
 - CABLE FIBERS: 72F
 CABLE OWNER LEVEL (3)
 CABLE LENGTH: 240'
 NOTES: PHASE II REMOVED EXIST. 72F CABLE FROM EXIST. CONDUIT

SITE PLAN



LEVEL 3 ENGINEERING & RETAIL LLC
 ENGINEERING FIRM: GOLDEN FIELD SERVICES
 PROJECT NUMBER: FA 1093 WESTPARK EXTENSION PHASE II
 LOCATION: FULSHEAR, TX
 DRAWING NAME: Level 3 Fulhear - TX FA 1093 Westpark Extension Phase II
 CONFIDENTIAL/PROPRIETARY SHEET: 29 OF 43



SCALE:
 HORIZ: 1" = 50'
 VERT: 1" = 10'

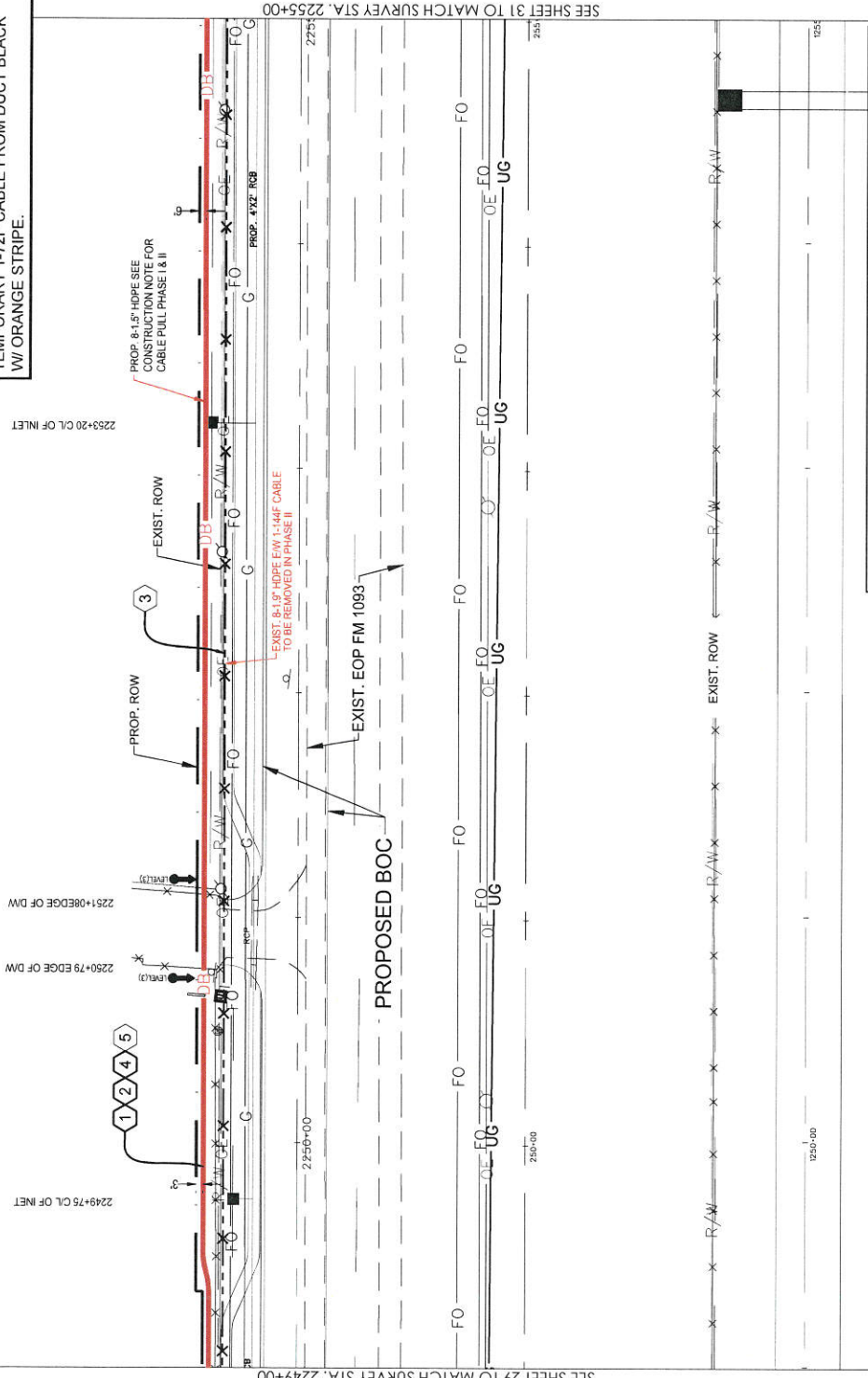
SEE SHEET 28 TO MATCH SURVEY STA. 2243+00

SEE SHEET 30 TO MATCH SURVEY STA. 2249+00

FULSHEAR, TX
FORT BEND COUNTY

CONSTRUCTION NOTE:
 PHASE I: PULL TEMPORARY 1-72F THRU DUCT BLACK W/ ORANGE STRIPE.
 REMOVE 1-144 CABLE FROM DUCT BLACK W/ PURPLE STRIPE
 PHASE II: PULL 1-144F CABLE THRU DUCT BLACK W/ PURPLE STRIPE. REMOVE TEMPORARY 1-72F CABLE FROM DUCT BLACK W/ ORANGE STRIPE.

- CONSTRUCTION NOTES**
- ① CONDUIT OWNER: LEVEL (3)
 CONDUIT OWNER: 800'
 CONDUIT TYPE: 1.5"
 CONDUIT SIZE: 3/4-11 HOPE
 NOTES: DIRECTIONAL BORE 8-1.5" HOPE TO BE E/W 1-144F LEVEL (3) CABLE
 - ② CABLE FIBERS: 72F
 CABLE OWNER: LEVEL (3)
 CABLE LENGTH: 600'
 NOTES: PULL CABLE IN NEW 1.5" HOPE
 - ③ CABLE FIBERS: 144F
 CABLE OWNER: LEVEL (3)
 CABLE LENGTH: 600'
 NOTES: REMOVED EXIST. 144F CABLE FROM EXIST. CONDUIT
 - ④ CABLE FIBERS: 144F
 CABLE OWNER: LEVEL (3)
 CABLE LENGTH: 600'
 NOTES: PHASE I PULL CABLE IN NEW 1.5" HOPE
 - ⑤ CABLE FIBERS: 72F
 CABLE OWNER: LEVEL (3)
 CABLE LENGTH: 600'
 NOTES: PHASE II REMOVED EXIST. 72F CABLE FROM EXIST. CONDUIT



PHASE 2A Page Rate Card

Unit Code & Description	Units	Estimated Quantity	Actual Quantity
UGB-30700 - DIR. BORE GREATER THAN 1500'. ADDITIONAL HOPE CONDUIT UP TO 2' (5 OF 8)	FT	3,000'	-
UGB-30710 - DIR. BORE GREATER THAN 1500'. 3 HOPE CONDUIT UP TO 2' (3 OF 8)	FT	600'	-
UGB-30960 - PLACE UP TO 288 COUNT FOC IN CONDUIT. UP TO 1500' (INCL COILS)	FT	600'	-
UGB-30970 - PLACE UP TO 288 COUNT FOC IN CONDUIT. (EACH ADDITIONAL CABLE)	FT	600'	-
UGB-31090 - REMOVE & DISPOSE OF CABLE	FT	600'	-
UGB-31070 - REMOVE & DISPOSE OF CABLE, EACH ADDITIONAL CABLE	FT	600'	-
MRI-50070 - CONDUIT: 1 1/2" HOPE SUR-11	FT	4800'	-



SCALE:
 HORI: 1" = 50'
 VERT: 1" = 10'

SITE PLAN

NO.	DATE	ENG. DESIGN	DRAWING	CONSTRUCTION	COMMENT
3	03/7/18	GIS	GIS	BRISCON	
2	06/28/17	GIS	GIS	CONSTRUCTION	



LEVEL 3 ENGINEER, KATH HALL
 ENGINEERING FIRM: GOLDEN FIELD SERVICES
 PROJECT: 0093 WESTPARK EXTENSION PHASE II
 LOCATION: FULSHEAR, TX
 DRAWING NAME: Level 3 Fulshear - TX FM 1093 Westpark Extension Phase II
 12-18-2018
 CONFIDENTIAL/PROPRIETARY SHEET 30 OF 43

SEE SHEET 29 TO MATCH SURVEY STA. 2249+00

SEE SHEET 31 TO MATCH SURVEY STA. 2255+00

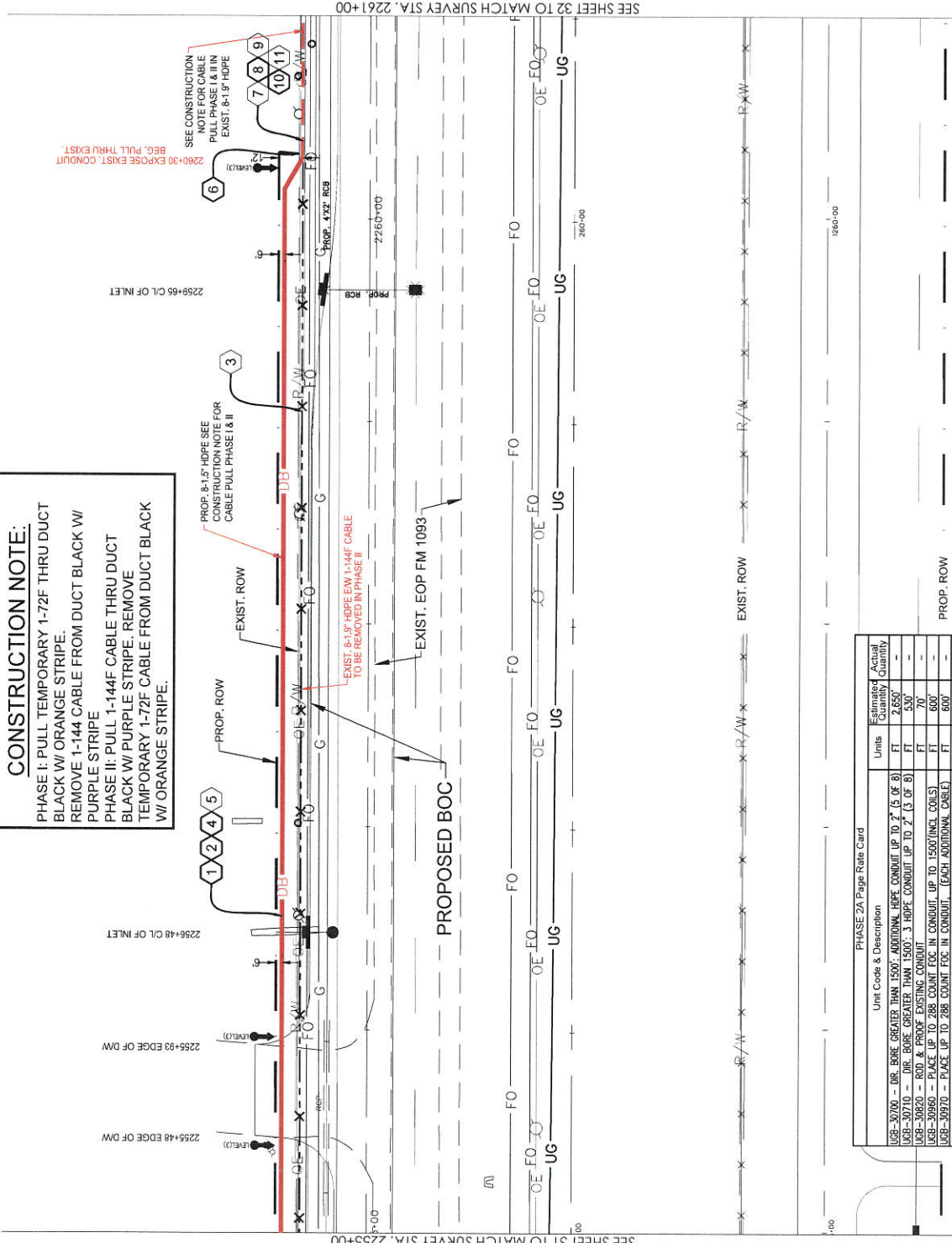
FULSHEAR, TX
FORT BEND COUNTY

CONSTRUCTION NOTE:

PHASE I: PULL TEMPORARY 1-72F THRU DUCT BLACK W/ ORANGE STRIPE.
REMOVE 1-144F CABLE FROM DUCT BLACK W/ PURPLE STRIPE
PHASE II: PULL 1-144F CABLE THRU DUCT BLACK W/ PURPLE STRIPE. REMOVE TEMPORARY 1-72F CABLE FROM DUCT BLACK W/ ORANGE STRIPE.

CONSTRUCTION NOTES

- ① CONDUIT OWNER: LEVEL (3)
CONDUIT LENGTH: 530'
CONDUIT QTY: 8
CONDUIT SIZE: 1.5"
CONDUIT TYPE: SDR-11 HDPE
NOTES: DIRECTIONAL BORE 8-1.5" HDPE TO BE E/W 1-144F LEVEL (3) CABLE
- ② CABLE FIBERS: 72F
CABLE OWNER: LEVEL (3)
CABLE LENGTH: 530'
NOTES: PULL CABLE IN NEW 1.5" HDPE
- ③ CABLE FIBERS: 144F
CABLE OWNER: LEVEL (3)
CABLE LENGTH: 530'
NOTES: REMOVED EXIST. 144F CABLE FROM EXIST. CONDUIT
- ④ CABLE FIBERS: 144F
CABLE OWNER: LEVEL (3)
CABLE LENGTH: 530'
NOTES: PHASE I PULL CABLE IN NEW 1.5" HDPE
- ⑤ CABLE FIBERS: 72F
CABLE OWNER: LEVEL (3)
CABLE LENGTH: 530'
NOTES: PHASE II REMOVED EXIST. 72F CABLE FROM EXIST. CONDUIT
- ⑥ INTERCEPT EXIST. LEVEL (3) CONDUIT
CONDUIT OWNER: LEVEL (3)
CONDUIT LENGTH: 70'
CONDUIT SIZE: 1.5"
CONDUIT TYPE: SDR-11 HDPE
NOTES: REMOVED EXIST. 144F CABLE FROM EXIST. CONDUIT
- ⑦ CABLE FIBERS: 72F
CABLE OWNER: LEVEL (3)
CABLE LENGTH: 70'
NOTES: PULL CABLE IN EXIST 1.5" HDPE
- ⑧ CABLE FIBERS: 144F
CABLE OWNER: LEVEL (3)
CABLE LENGTH: 70'
NOTES: REMOVED EXIST. 144F CABLE FROM EXIST. CONDUIT
- ⑨ CABLE FIBERS: 144F
CABLE OWNER: LEVEL (3)
CABLE LENGTH: 70'
NOTES: PHASE II PULL CABLE IN EXIST 1.5" HDPE
- ⑩ CABLE FIBERS: 72F
CABLE OWNER: LEVEL (3)
CABLE LENGTH: 70'
NOTES: PHASE I REMOVED EXIST. 72F CABLE FROM EXIST. CONDUIT



SEE SHEET 31 TO MATCH SURVEY STA. 2255+00

SEE SHEET 32 TO MATCH SURVEY STA. 2261+00

SITE PLAN

NO.	DATE	ENG. DESIGN	DRAFTING	GPS	GPS	ROVISION	COMMENT
3	03/27/18	GPS	GPS				
2	08/28/17	GPS	GPS				
1							



LEVEL 3 ENGINEER: KEITH HALL
PROJECT NUMBER: FM 1093 WESTPARK EXTENSION PHASE II
LOCATION: FULSHEAR, TX
DRAWING NAME: Level 3 Fulshear, TX FM 1093 Westpark Extension Phase II
CONFIDENTIAL/PROPRIETARY



SCALE:
HORI: 1" = 50'
VERT: 1" = 10'

PHASE 2A Page Rate Card

Unit Code & Description	Units	Estimated Quantity	Actual Quantity
UGS-30700 - DIR. BORE GREATER THAN 1500'. ADDITIONAL HDPE CONDUIT UP TO 2" (5 OF 8)	FT	2,650'	-
UGS-30710 - DIR. BORE GREATER THAN 1500'. 3 HDPE CONDUIT UP TO 2" (3 OF 8)	FT	530'	-
UGS-30820 - ROD & PROOF EXISTING CONDUIT	FT	70'	-
UGS-30920 - PLACE UP TO 288 COUNT FOC IN CONDUIT, UP TO 1500'(INCL. COILS)	FT	600'	-
UGS-30970 - PLACE UP TO 288 COUNT FOC IN CONDUIT, (EACH ADDITIONAL CABLE)	FT	800'	-
UGS-31070 - REMOVE & DISPOSE OF COILS	EA	600'	-
UGS-31640 - EXCAVATE SMALL PIT, 6'x4'x5'	EA	600'	-
MAT-90070 - Conduit: 1 1/2" HDPE_SDR-11	FT	4240'	-

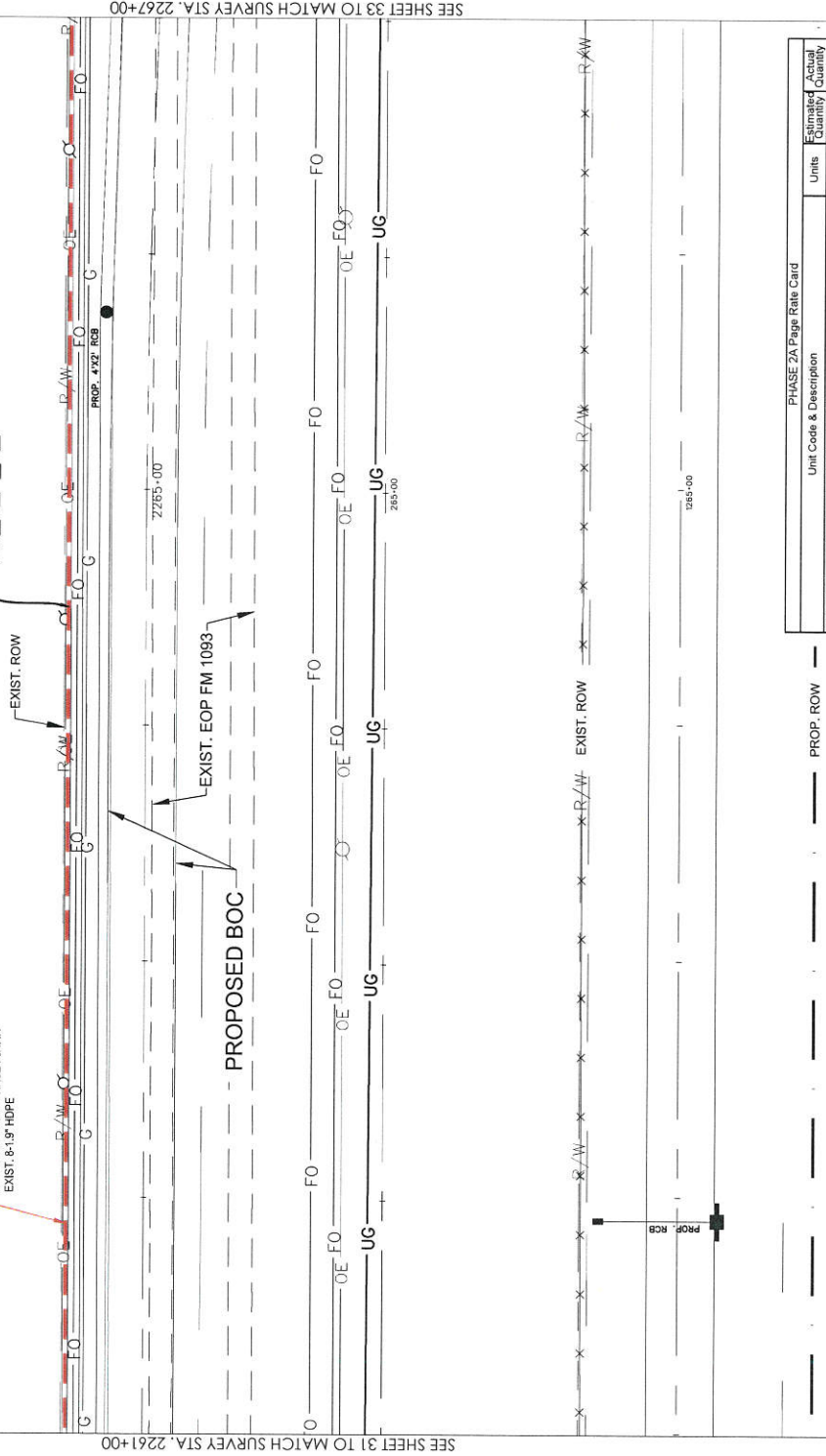
FULSHEAR, TX
FORT BEND COUNTY

CONSTRUCTION NOTE:

PHASE I: PULL TEMPORARY 1-72F THRU DUCT BLACK W/ ORANGE STRIPE.
REMOVE 1-144 CABLE FROM DUCT BLACK W/ PURPLE STRIPE
PHASE II: PULL 1-144F CABLE THRU DUCT BLACK W/ PURPLE STRIPE, REMOVE TEMPORARY 1-72F CABLE FROM DUCT BLACK W/ ORANGE STRIPE.

SEE CONSTRUCTION NOTE FOR CABLE PULL PHASE I & II IN EXIST. 8-1.5" HDPE

1 2 3 4 5



SEE SHEET 31 TO MATCH SURVEY STA. 2261+00

SEE SHEET 33 TO MATCH SURVEY STA. 2267+00

CONSTRUCTION NOTES

- 1 CONDUIT OWNER: LEVEL (3)
CONDUIT LENGTH: 600'
CONDUIT OTR: 8
CONDUIT SIZE: 1.5"
CONDUIT TYPE: SUR-11 HDPE
NOTES: REMOVED EXIST. 144F CABLE FROM EXIST. CONDUIT
- 2 CABLE FIBERS: 72F
CABLE OWNER: LEVEL (3)
CABLE LENGTH: 600'
NOTES: PULL CABLE IN EXIST. 1.5" HDPE
- 3 CABLE FIBERS: 144F
CABLE OWNER: LEVEL (3)
CABLE LENGTH: 600'
NOTES: REMOVED EXIST. 144F CABLE FROM EXIST. CONDUIT
- 4 CABLE FIBERS: 144F
CABLE OWNER: LEVEL (3)
CABLE LENGTH: 600'
NOTES: PHASE I PULL CABLE IN EXIST. 1.5" HDPE
- 5 CABLE FIBERS: 72F
CABLE OWNER: LEVEL (3)
CABLE LENGTH: 600'
NOTES: PHASE II REMOVED EXIST. 72F CABLE FROM EXIST. CONDUIT

SITE PLAN

NO.	DATE	ENG. DESIGN	DRAFTING	CONSTRUCTION	REVISION	COMMENT
3	03/27/18	GPS	GPS	GPS		
2	06/28/17	GPS	GPS	GPS		
1						



LEVEL 3 ENGINEER: KEITH HALL
GOLDEN FIELD SERVICES
PROJECT NUMBER: 17-001
LOCATION: FULSHEAR, TX
DRAWING NAME: Level 3 Fulshear - TX FM 1093 Westgate Extension Phase II
CONFIDENTIAL/PROPRIETARY



SCALE:
HOR: 1" = 50'
VERT: 1" = 10'

PHASE 2A Page Rate Card

Unit Code & Description	Units	Estimated Quantity	Actual Quantity
USB-30870 - 600' & 600' EXISTING CONDUIT	FT	600'	-
USB-30860 - PLACE UP TO 1.50" (INCL. COILS)	FT	600'	-
USB-30870 - PLACE UP TO 288' CONDUIT (EACH ADDITIONAL CABLE)	FT	600'	-
USB-31070 - REMOVE & DISPOSE OF CABLE (EACH ADDITIONAL CABLE)	FT	600'	-

FULSHEAR, TX
FORT BEND COUNTY

CONSTRUCTION NOTE:

PHASE I: PULL TEMPORARY 1-72F THRU DUCT BLACK W/ ORANGE STRIPE.
REMOVE 1-144 CABLE FROM DUCT BLACK W/ PURPLE STRIPE
PHASE II: PULL 1-144F CABLE THRU DUCT BLACK W/ PURPLE STRIPE. REMOVE TEMPORARY 1-72F CABLE FROM DUCT BLACK W/ ORANGE STRIPE.

SEE CONSTRUCTION NOTE FOR CABLE PULL PHASE I & II
EXIST. 8-1.5" HDPE

FLEWELLEN PLACE
2271+57 EDGE OF D/W
LANE
2271+84 EDGE OF D/W

1 2 3 4 5

EXIST. ROW

SEE SHEET 32 TO MATCH SURVEY STA. 2267+00

SEE SHEET 34 TO MATCH SURVEY STA. 2273+00

CONSTRUCTION NOTES

- 1 CONDUIT OWNER: LEVEL (3)
CONDUIT LENGTH: 600'
CONDUIT QTY: 8
CONDUIT SIZE: 1.5"
CONDUIT TYPE: SUR-11 HDPE
NOTES: REMOVE EXIST. 144F CABLE FROM EXIST. CONDUIT
- 2 CABLE FIBERS: 72F
CABLE OWNER: LEVEL (3)
CABLE LENGTH: 600'
NOTES: PULL CABLE IN EXIST. 1.5" HDPE
- 3 CABLE FIBERS: 144F
CABLE OWNER: LEVEL (3)
CABLE LENGTH: 600'
NOTES: REMOVE EXIST. 144F CABLE FROM EXIST. CONDUIT
- 4 CABLE FIBERS: 144F
CABLE OWNER: LEVEL (3)
CABLE LENGTH: 600'
NOTES: PHASE II PULL CABLE IN EXIST. 1.5" HDPE
- 5 CABLE FIBERS: 72F
CABLE OWNER: LEVEL (3)
CABLE LENGTH: 600'
NOTES: PHASE II REMOVE EXIST. 72F CABLE FROM EXIST. CONDUIT

SITE PLAN

3									
2	03/7/18	G/S	G/S	G/S	REVISION				
1	06/28/17	G/S	G/S	G/S	CONSTRUCTION				
IND	DATE	ENG	DESIGN	DRAFTING	COMMENT				



PHASE 2A Page Rate Card

Unit Code & Description	Units	Estimated Quantity	Actual Quantity
UGB-30820 - ROD & PROOF EXISTING CONDUIT	FT	600'	-
UGB-30960 - PLACE UP TO 288 COUNT FOC IN CONDUIT UP TO 1500'(INCL COILS)	FT	600'	-
UGB-30970 - PLACE UP TO 288 COUNT FOC IN CONDUIT (EACH ADDITIONAL CABLE)	FT	600'	-
UGB-31070 - REMOVE & DISPOSE OF CABLE, EACH ADDITIONAL CABLE	FT	600'	-

SCALE: 1" = 50'
HORIZ: 1" = 10'
VERT: 1" = 10'

LEVEL 3 ENGINEERING
PUBLIC UTILITIES
ENGINEERING FIRM: GOLDEN HILL SERVICES
PROJECT NUMBER: FM 1093 WESTPARK EXTENSION PHASE II
LOCATION: FULSHEAR, TX
DRAWING NAME: Level 3 FulShear - TX FM 1093 Westpark Extension Phase II
CONFIDENTIAL/PROPRIETARY
SHEET: 33 OF 43

FULSHEAR, TX
FORT BEND COUNTY

CONSTRUCTION NOTE:
PHASE I: PULL TEMPORARY 1-72F THRU DUCT BLACK W/ ORANGE STRIPE.
REMOVE 1-144 CABLE FROM DUCT BLACK W/ PURPLE STRIPE
PHASE II: PULL 1-144F CABLE THRU DUCT BLACK W/ PURPLE STRIPE. REMOVE TEMPORARY 1-72F CABLE FROM DUCT BLACK W/ ORANGE STRIPE.

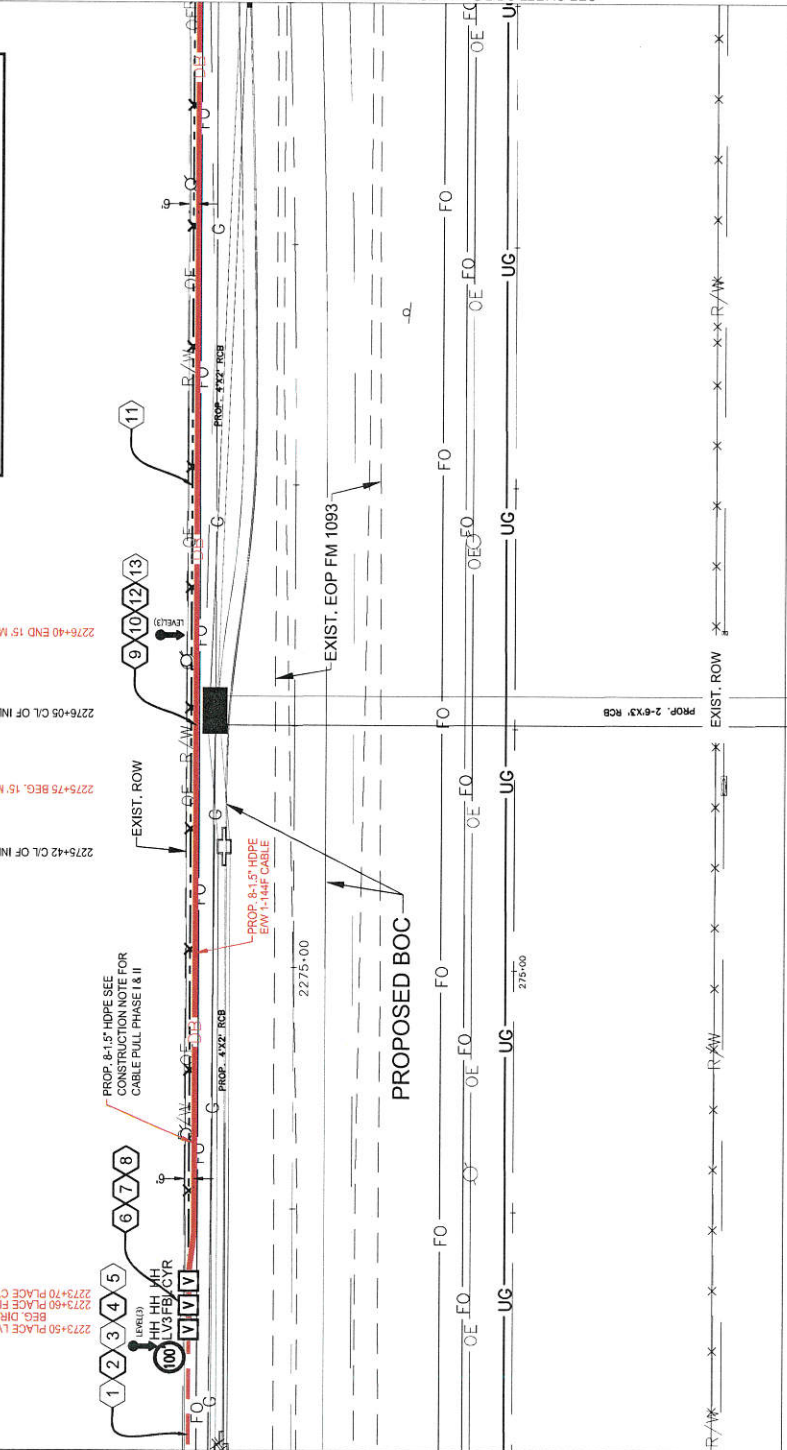
2273+50 PLACE LV3 HH
BEG. DIR. BORE
2273+60 PLACE FIBER LIGHT HH
2273+70 PLACE CYRUS ONE HH

2275+42 CL OF INLET
2275+75 BEG. 15' MIN. DEPTH
2276+05 CL OF INLET
2276+40 END 15' MIN. DEPTH

PROF. 8-15" HOPE SEE CONSTRUCTION NOTE FOR CABLE PULL PHASE I & II

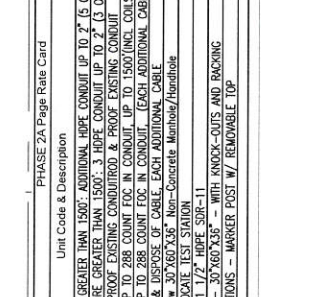
PROF. 8-15" HOPE E/W 1-144F CABLE

PROF. 4-1/2" RCB



PHASE 2A Page Rate Card

Unit Code & Description	Units	Estimate Quantity	Actual Quantity
UGB-30700 - DR. BORE GREATER THAN 1500', ADDITIONAL HOPE CONDUIT UP TO 2" (5 OF 8)	FT	2,750	-
UGB-30710 - DR. BORE GREATER THAN 1500', 3 HOPE CONDUIT UP TO 2" (3 OF 8)	FT	550	-
UGB-30820 - ROD & PROOF EXISTING CONDUIT ROD & PROOF EXISTING CONDUIT	FT	50'	-
UGB-30960 - PLACE UP TO 288 COUNT FOC IN CONDUIT, UP TO 1500'(INCL. COILS)	FT	700'	-
UGB-30970 - REMOVE & DISPOS. OF CABLE, EACH ADDITIONAL CABLE	FT	700'	-
UGB-31070 - REMOVE & DISPOS. OF CABLE, EACH ADDITIONAL CABLE	EA	3	-
UGB-32000 - PLACE LV3 HH TEST STATION	EA	4400'	-
MAI-30070 - Conduits: 1-1/2" HOPE SDR-11	EA	3	-
MAI-30980 - BEB 15 - 30'x60'x36" - WITH KNOCK-OUTS AND BACKING	EA	3	-
MAI-32080 - TEST STATIONS - MARKER POST W/ REMOVABLE TOP	EA	1	-



SCALE:
HORI: 1" = 50'
VERT: 1" = 10'

CONSTRUCTION NOTES

- CONDUIT OWNER: LEVEL (3)
CONDUIT LENGTH: 50'
CONDUIT QTY: 8
CABLE SIZE: 1.5"
NOTES: REMOVED EXIST. 144F CABLE FROM EXIST. CONDUIT
- CABLE FEEDS: 72F
CABLE OWNER: LEVEL (3)
CABLE LENGTH: 150'
NOTES: PULL CABLE IN EXIST. 1.5" HOPE, LEAVE 100' COIL IN PROP. LEVEL (3) HH
CABLE OWNER: LEVEL (3)
CABLE LENGTH: 50'
NOTES: REMOVED EXIST. 144F CABLE FROM EXIST. CONDUIT
- CABLE FEEDS: 144F
CABLE OWNER: LEVEL (3)
CABLE LENGTH: 150'
NOTES: PHASE II PULL CABLE IN EXIST. 1.5" HOPE, LEAVE 100' COIL IN PROP. LEVEL (3) HH
CABLE OWNER: LEVEL (3)
CABLE LENGTH: 150'
NOTES: PHASE I REMOVED EXIST. 144F CABLE FROM EXIST. CONDUIT
- LEVEL (3) HANDHOLE
LEAVE 100' COIL IN HH, INTERCEPT EXIST. LEVEL (3) CONDUIT
- FIBERLIGHT HANDHOLE
NOTE:
CABLE OWNER: LEVEL (3)
CONDUIT OWNER: LEVEL (3)
CONDUIT LENGTH: 150'
CONDUIT QTY: 8
CABLE SIZE: 1.5"
NOTES: INTERCEPT HOPE 8-1.5" HOPE TO BE E/W 1-144F LEVEL (3) CABLE
- CABLE FEEDS: 72F
CABLE OWNER: LEVEL (3)
CABLE LENGTH: 500'
NOTES: PULL CABLE IN NEW 1.5" HOPE
- CABLE FEEDS: 144F
CABLE OWNER: LEVEL (3)
CABLE LENGTH: 600'
NOTES: REMOVED EXIST. 144F CABLE FROM EXIST. CONDUIT
- CABLE FEEDS: 144F
CABLE OWNER: LEVEL (3)
CABLE LENGTH: 150'
NOTES: PHASE II PULL CABLE IN EXIST. 1.5" HOPE
- CABLE FEEDS: 72F
CABLE OWNER: LEVEL (3)
CABLE LENGTH: 600'
NOTES: PHASE I REMOVED EXIST. 72F CABLE FROM EXIST. CONDUIT

SEE SHEET 33 TO MATCH SURVEY STA. 2273+00

SEE SHEET 35 TO MATCH SURVEY STA. 2279+00

EXIST. ROW
PROP. 2-6'x3' CCB

EXIST. ROW
PROP. ROW

EXIST. ROW
PROP. ROW

EXIST. ROW
PROP. ROW

EXIST. ROW
PROP. ROW

EXIST. ROW
PROP. ROW

EXIST. ROW
PROP. ROW

EXIST. ROW
PROP. ROW

EXIST. ROW
PROP. ROW

EXIST. ROW
PROP. ROW

EXIST. ROW
PROP. ROW

EXIST. ROW
PROP. ROW

EXIST. ROW
PROP. ROW

EXIST. ROW
PROP. ROW

EXIST. ROW
PROP. ROW

EXIST. ROW
PROP. ROW

EXIST. ROW
PROP. ROW

EXIST. ROW
PROP. ROW

EXIST. ROW
PROP. ROW

EXIST. ROW
PROP. ROW

EXIST. ROW
PROP. ROW

EXIST. ROW
PROP. ROW

EXIST. ROW
PROP. ROW

EXIST. ROW
PROP. ROW

EXIST. ROW
PROP. ROW

EXIST. ROW
PROP. ROW

EXIST. ROW
PROP. ROW

EXIST. ROW
PROP. ROW

EXIST. ROW
PROP. ROW

EXIST. ROW
PROP. ROW

EXIST. ROW
PROP. ROW

EXIST. ROW
PROP. ROW

EXIST. ROW
PROP. ROW

EXIST. ROW
PROP. ROW

EXIST. ROW
PROP. ROW

EXIST. ROW
PROP. ROW

EXIST. ROW
PROP. ROW

EXIST. ROW
PROP. ROW

EXIST. ROW
PROP. ROW

EXIST. ROW
PROP. ROW

EXIST. ROW
PROP. ROW

EXIST. ROW
PROP. ROW

EXIST. ROW
PROP. ROW

EXIST. ROW
PROP. ROW

EXIST. ROW
PROP. ROW

EXIST. ROW
PROP. ROW

EXIST. ROW
PROP. ROW

EXIST. ROW
PROP. ROW

EXIST. ROW
PROP. ROW

EXIST. ROW
PROP. ROW

EXIST. ROW
PROP. ROW

EXIST. ROW
PROP. ROW

EXIST. ROW
PROP. ROW

EXIST. ROW
PROP. ROW

EXIST. ROW
PROP. ROW

EXIST. ROW
PROP. ROW

EXIST. ROW
PROP. ROW

EXIST. ROW
PROP. ROW

EXIST. ROW
PROP. ROW

EXIST. ROW
PROP. ROW

EXIST. ROW
PROP. ROW

EXIST. ROW
PROP. ROW

EXIST. ROW
PROP. ROW

EXIST. ROW
PROP. ROW

EXIST. ROW
PROP. ROW

EXIST. ROW
PROP. ROW

EXIST. ROW
PROP. ROW

EXIST. ROW
PROP. ROW

EXIST. ROW
PROP. ROW

EXIST. ROW
PROP. ROW

EXIST. ROW
PROP. ROW

EXIST. ROW
PROP. ROW

EXIST. ROW
PROP. ROW

EXIST. ROW
PROP. ROW

EXIST. ROW
PROP. ROW

EXIST. ROW
PROP. ROW

EXIST. ROW
PROP. ROW

EXIST. ROW
PROP. ROW

EXIST. ROW
PROP. ROW

EXIST. ROW
PROP. ROW

EXIST. ROW
PROP. ROW

EXIST. ROW
PROP. ROW

EXIST. ROW
PROP. ROW

EXIST. ROW
PROP. ROW

EXIST. ROW
PROP. ROW

EXIST. ROW
PROP. ROW

EXIST. ROW
PROP. ROW

EXIST. ROW
PROP. ROW

EXIST. ROW
PROP. ROW

EXIST. ROW
PROP. ROW

EXIST. ROW
PROP. ROW

EXIST. ROW
PROP. ROW

EXIST. ROW
PROP. ROW

EXIST. ROW
PROP. ROW

EXIST. ROW
PROP. ROW

EXIST. ROW
PROP. ROW

EXIST. ROW
PROP. ROW

EXIST. ROW
PROP. ROW

EXIST. ROW
PROP. ROW

EXIST. ROW
PROP. ROW

EXIST. ROW
PROP. ROW

EXIST. ROW
PROP. ROW

EXIST. ROW
PROP. ROW

EXIST. ROW
PROP. ROW

EXIST. ROW
PROP. ROW

EXIST. ROW
PROP. ROW

EXIST. ROW
PROP. ROW

EXIST. ROW
PROP. ROW

EXIST. ROW
PROP. ROW

EXIST. ROW
PROP. ROW

EXIST. ROW
PROP. ROW

EXIST. ROW
PROP. ROW

EXIST. ROW
PROP. ROW

EXIST. ROW
PROP. ROW

EXIST. ROW
PROP. ROW

EXIST. ROW
PROP. ROW

EXIST. ROW
PROP. ROW

EXIST. ROW
PROP. ROW

EXIST. ROW
PROP. ROW

EXIST. ROW
PROP. ROW

EXIST. ROW
PROP. ROW

EXIST. ROW
PROP. ROW

EXIST. ROW
PROP. ROW

EXIST. ROW
PROP. ROW

EXIST. ROW
PROP. ROW

EXIST. ROW
PROP. ROW

EXIST. ROW
PROP. ROW

EXIST. ROW
PROP. ROW

EXIST. ROW
PROP. ROW

EXIST. ROW
PROP. ROW

EXIST. ROW
PROP. ROW

EXIST. ROW
PROP. ROW

EXIST. ROW
PROP. ROW

EXIST. ROW
PROP. ROW

EXIST. ROW
PROP. ROW

EXIST. ROW
PROP. ROW

EXIST. ROW
PROP. ROW

EXIST. ROW
PROP. ROW

EXIST. ROW
PROP. ROW

EXIST. ROW
PROP. ROW

EXIST. ROW
PROP. ROW

EXIST. ROW
PROP. ROW

EXIST. ROW
PROP. ROW

EXIST. ROW
PROP. ROW

EXIST. ROW
PROP. ROW

EXIST. ROW
PROP. ROW

EXIST. ROW
PROP. ROW

EXIST. ROW
PROP. ROW

EXIST. ROW
PROP. ROW

EXIST. ROW
PROP. ROW

EXIST. ROW
PROP. ROW

EXIST. ROW
PROP. ROW

EXIST. ROW
PROP. ROW

EXIST. ROW
PROP. ROW

EXIST. ROW
PROP. ROW

EXIST. ROW
PROP. ROW

EXIST. ROW
PROP. ROW

EXIST. ROW
PROP. ROW

EXIST. ROW
PROP. ROW

EXIST. ROW
PROP. ROW

EXIST. ROW
PROP. ROW

EXIST. ROW
PROP. ROW

EXIST. ROW
PROP. ROW

EXIST. ROW
PROP. ROW

EXIST. ROW
PROP. ROW

EXIST. ROW
PROP. ROW

EXIST. ROW
PROP. ROW

EXIST. ROW
PROP. ROW

EXIST. ROW
PROP. ROW

EXIST. ROW
PROP. ROW

EXIST. ROW
PROP. ROW

EXIST. ROW
PROP. ROW

EXIST. ROW
PROP. ROW

EXIST. ROW
PROP. ROW

EXIST. ROW
PROP. ROW

EXIST. ROW
PROP. ROW

EXIST. ROW
PROP. ROW

EXIST. ROW
PROP. ROW

EXIST. ROW
PROP. ROW

EXIST. ROW
PROP. ROW

EXIST. ROW
PROP. ROW

EXIST. ROW
PROP. ROW

EXIST. ROW
PROP. ROW

EXIST. ROW
PROP. ROW

EXIST. ROW
PROP. ROW

EXIST. ROW
PROP. ROW

EXIST. ROW
PROP. ROW

EXIST. ROW
PROP. ROW

EXIST. ROW
PROP. ROW

EXIST. ROW
PROP. ROW

EXIST. ROW
PROP. ROW

EXIST. ROW
PROP. ROW

EXIST. ROW
PROP. ROW

EXIST. ROW
PROP. ROW

EXIST. ROW
PROP. ROW

EXIST. ROW
PROP. ROW

EXIST. ROW
PROP. ROW

EXIST. ROW
PROP. ROW

EXIST. ROW
PROP. ROW

EXIST. ROW
PROP. ROW

EXIST. ROW
PROP. ROW

EXIST. ROW
PROP. ROW

EXIST. ROW
PROP. ROW

EXIST. ROW
PROP. ROW

EXIST. ROW
PROP. ROW

EXIST. ROW
PROP. ROW

EXIST. ROW
PROP. ROW

EXIST. ROW
PROP. ROW

EXIST. ROW
PROP. ROW

EXIST. ROW
PROP. ROW

EXIST. ROW
PROP. ROW

EXIST. ROW
PROP. ROW

EXIST. ROW
PROP. ROW

EXIST. ROW
PROP. ROW

EXIST. ROW
PROP. ROW

EXIST. ROW
PROP. ROW

FULSHEAR, TX
FORT BEND COUNTY

CONSTRUCTION NOTE:

PHASE I: PULL TEMPORARY 1-72F THRU DUCT BLACK W/ ORANGE STRIPE.
REMOVE 1-144 CABLE FROM DUCT BLACK W/ PURPLE STRIPE
PHASE II: PULL 1-144F CABLE THRU DUCT BLACK W/ PURPLE STRIPE. REMOVE TEMPORARY 1-72F CABLE FROM DUCT BLACK W/ ORANGE STRIPE.

2280+00 EXPOSE EXIST. CONDUIT
BEG. PULL THRU EXIST.

1-2-4-5
PROP. 8-1.5" HDPE SEE CONSTRUCTION NOTE FOR CABLE PULL PHASE I & II

6
SEE CONSTRUCTION NOTE FOR CABLE PULL PHASE I & II IN EXIST. 8-1.5" HDPE

2283+26 EDGE OF PROP. BRIDGE

2284+46 EDGE OF PROP. BRIDGE

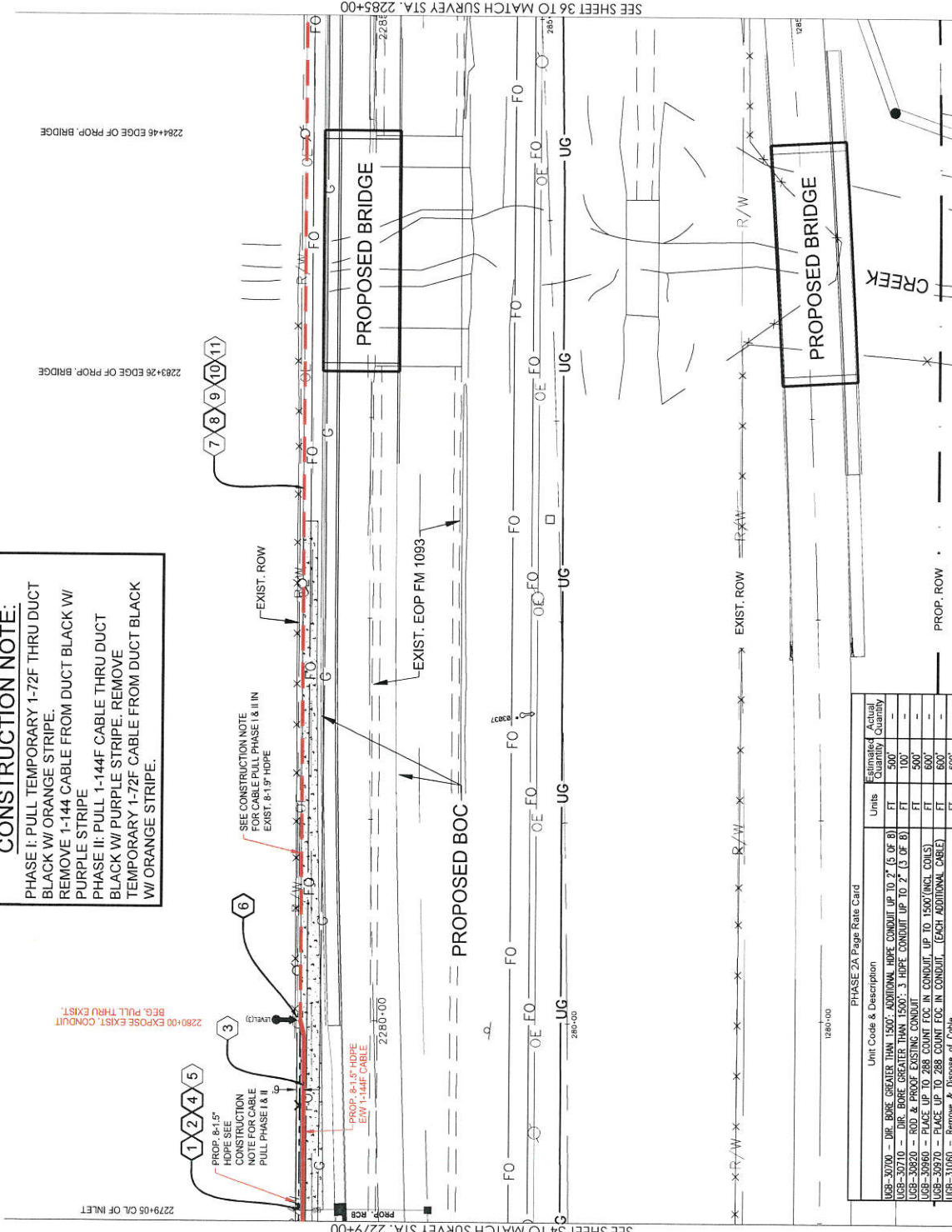
SEE SHEET 34 TO MATCH SURVEY STA. 2279+00

SEE SHEET 36 TO MATCH SURVEY STA. 2285+00

CONSTRUCTION NOTES

- 1 CONDUIT OWNER: LEVEL (3)
CONDUIT LENGTH: 100'
CONDUIT QTY: 8
CONDUIT SIZE: 1.5"
CONDUIT TYPE: SDR-11 HDPE
NOTES: DIRECTIONAL BORE 8-1.5" HDPE TO BE E/W 1-144F CABLE (3) CABLE
- 2 CABLE FIBERS: 72F
CABLE OWNER: LEVEL (3)
CABLE LENGTH: 100'
NOTES: PULL CABLE IN NEW 1.5" HDPE
- 3 CABLE FIBERS: 144F
CABLE OWNER: LEVEL (3)
CABLE LENGTH: 600'
NOTES: REMOVED EXIST. 144F CABLE FROM EXIST. CONDUIT
- 4 CABLE FIBERS: 144F
CABLE OWNER: LEVEL (3)
CABLE LENGTH: 100'
NOTES: PHASE II PULL CABLE IN NEW 1.5" HDPE
- 5 CABLE FIBERS: 72F
CABLE OWNER: LEVEL (3)
CABLE LENGTH: 600'
NOTES: PHASE II REMOVED EXIST. 72F CABLE FROM EXIST. CONDUIT
- 6 INTERCEPT EXIST. LEVEL (3) CONDUIT
- 7 CONDUIT OWNER: LEVEL (3)
CONDUIT LENGTH: 500'
CONDUIT QTY: 8
CONDUIT SIZE: 1.5"
CONDUIT TYPE: SDR-11 HDPE
NOTES: REMOVED EXIST. 144F CABLE FROM EXIST. CONDUIT
- 8 CABLE FIBERS: 72F
CABLE OWNER: LEVEL (3)
CABLE LENGTH: 500'
NOTES: PULL CABLE IN EXIST. 1.5" HDPE
- 9 CABLE FIBERS: 144F
CABLE OWNER: LEVEL (3)
CABLE LENGTH: 500'
NOTES: REMOVED EXIST. 144F CABLE FROM EXIST. CONDUIT
- 10 CABLE FIBERS: 144F
CABLE OWNER: LEVEL (3)
CABLE LENGTH: 600'
NOTES: PHASE II PULL CABLE IN EXIST. 1.5" HDPE
- 11 CABLE FIBERS: 72F
CABLE OWNER: LEVEL (3)
CABLE LENGTH: 500'
NOTES: PHASE II REMOVED EXIST. 72F CABLE FROM EXIST. CONDUIT

SITE PLAN



PHASE 2A Page Rate Card

Unit Code & Description	Units	Estimated Quantity	Actual Quantity
UGB-90700 - DIB. BORE GREATER THAN 1500'. ADDITIONAL HDPE CONDUIT UP TO 0" (5 OF 8)	FT	500'	-
UGB-33710 - DIB. BORE GREATER THAN 1500'. 3 HDPE CONDUIT UP TO 2" (3 OF 6)	FT	500'	-
UGB-33820 - BOD. & PROOF EXISTING CONDUIT UP TO 2" (3 OF 6)	FT	500'	-
UGB-30960 - PLACE UP TO 288 COUNT FOC IN CONDUIT. UP TO 1500'(INCL CONLS)	FT	600'	-
UGB-30970 - PLACE UP TO 288 COUNT FOC IN CONDUIT. (EACH ADDITIONAL CABLE)	FT	600'	-
UGB-31060 - REMOVE & DISPOSE OF CABLE	FT	600'	-
UGB-31070 - REMOVE & DISPOSE OF CABLE. EACH ADDITIONAL CABLE	FT	600'	-
UGB-31640 - EXCAVATE SMALL PIT. 6'x4'x5'	EA	1	-
MAI-90070 - Conduit. 1.172" HDPE SDR-11	FT	800'	-



SCALE:
HORIZ: 1" = 50'
VERT: 1" = 10'



LEVEL 3 CONSULTING
15000 W. WINDYBROOK DRIVE, SUITE 100
FULSHEAR, TEXAS 78045
PROJECT NUMBER: FM 1093 WESTPARK EXTENSION PHASE II
LOCATION: FULSHEAR, TX
DRAWING NAME: Level 3 Fulshear - TX FM 1093 Extension Phase II
CONFIDENTIAL/PROPRIETARY SHEET: 35 OF 43

NO.	DATE	ENG.	DESIGN	DRAFTING	COMMENT
1	06/28/17	GPS	GPS	GPS	CONSTRUCTION
2	03/27/18	GPS	GPS	GPS	REVISION

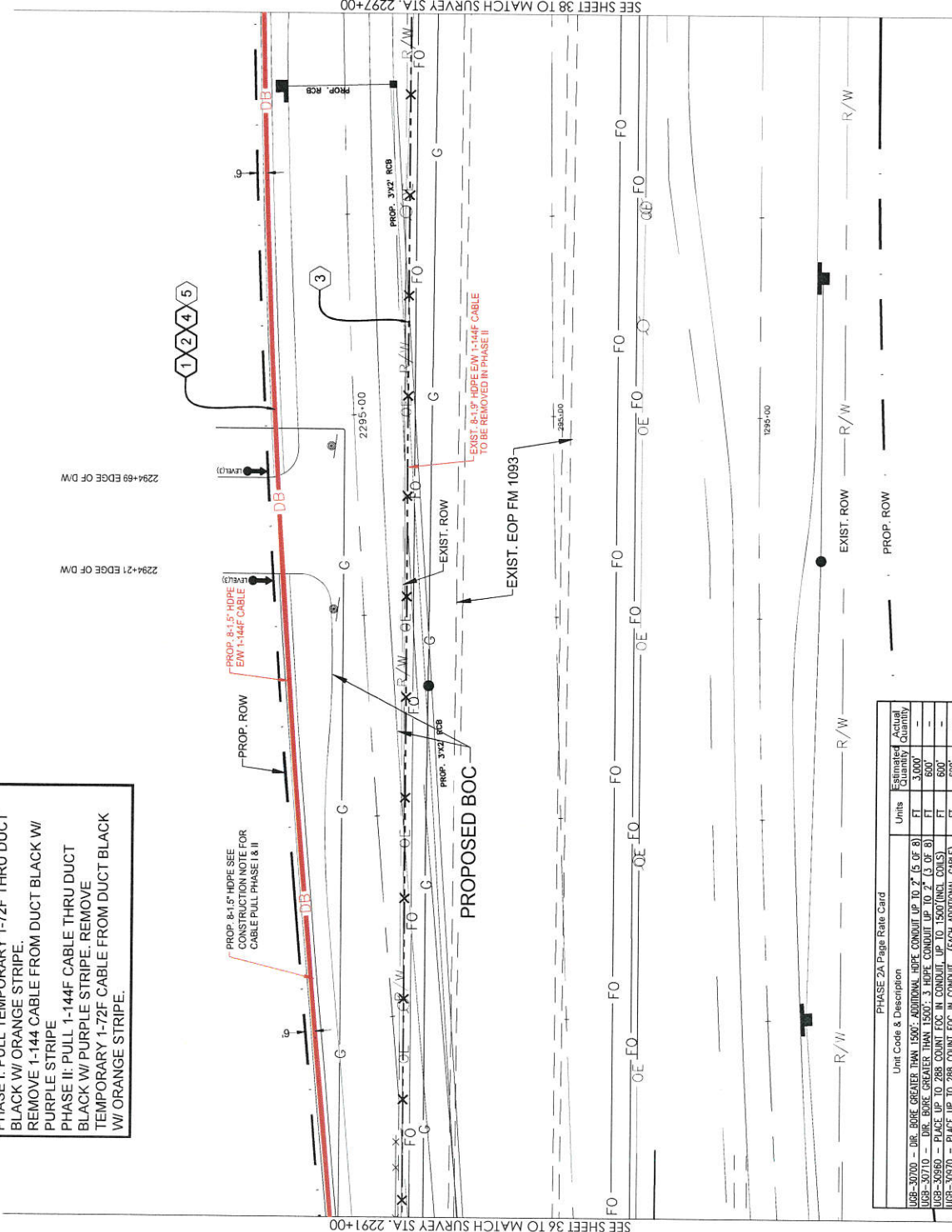
FULSHEAR, TX
FORT BEND COUNTY

CONSTRUCTION NOTE:

PHASE I: PULL TEMPORARY 1-72F THRU DUCT BLACK W/ ORANGE STRIPE.
REMOVE 1-144 CABLE FROM DUCT BLACK W/ PURPLE STRIPE
PHASE II: PULL 1-144F CABLE THRU DUCT BLACK W/ PURPLE STRIPE. REMOVE TEMPORARY 1-72F CABLE FROM DUCT BLACK W/ ORANGE STRIPE.

CONSTRUCTION NOTES

- 1) CONDUIT OWNER: LEVEL (3)
CONDUIT LENGTH: 600'
CONDUIT QTY: 8
CONDUIT SIZE: 1.5"
CONDUIT TYPE: SDR-11 HDPE
NOTES: DIRECTIONAL BORE 8-1.5" HDPE TO BE E/W 1-144F LEVEL (3)
CABLE FIBERS: 72F
CABLE OWNER: LEVEL (3)
CABLE LENGTH: 600'
NOTES: PULL CABLE IN NEW 1.5" HDPE
- 2) CABLE FIBERS: 144F
CABLE OWNER: LEVEL (3)
CABLE LENGTH: 600'
NOTES: REMOVED EXIST. 144F CABLE FROM EXIST. CONDUIT
- 3) CABLE FIBERS: 144F
CABLE OWNER: LEVEL (3)
CABLE LENGTH: 600'
NOTES: REMOVED EXIST. 144F CABLE FROM EXIST. CONDUIT
- 4) CABLE FIBERS: 144F
CABLE OWNER: LEVEL (3)
CABLE LENGTH: 600'
NOTES: PHASE II PULL CABLE IN NEW 1.5" HDPE
- 5) CABLE FIBERS: 72F
CABLE OWNER: LEVEL (3)
CABLE LENGTH: 600'
NOTES: REMOVED EXIST. 72F CABLE FROM EXIST. CONDUIT



SEE SHEET 36 TO MATCH SURVEY STA. 2291+00

SEE SHEET 38 TO MATCH SURVEY STA. 2297+00

SITE PLAN

3	03/7/18	GFS	GFS	REVISION
2	03/7/18	GFS	GFS	CONSTRUCTION
1	08/28/17	GFS	GFS	CONSTRUCTION
NO.	DATE	ENG. DESIGN	DRAFTING	COMMENT



LEVEL 3 COMMUNICATIONS
 LEVEL 3 ENGINEERING
 1000 WESTPARK EXTENSION PHASE II
 ENGINEERING DEPT. - WESTPARK EXTENSION PHASE II
 PROJECT NUMBER: FM 1093 WESTPARK EXTENSION PHASE II
 LOCATION: FULSHEAR, TX
 DRAWING NAME: Level 3 Fulshear, TX FM 1093 Westpark Extension Phase II
 CONFIDENTIAL/PROPRIETARY SHEET: 37 OF 43



SCALE:
 HORIZ: 1" = 90'
 VERT: 1" = 10'

PHASE 2A Page Rate Card

Unit Code & Description	Units	Estimated Quantity	Actual Quantity
UGB-30700 - DIR. BORE GREATER THAN 1500'. ADDITIONAL HDPE CONDUIT UP TO 2" (5 OF 8)	FT	600'	-
UGB-30710 - DIR. BORE GREATER THAN 1500'. 3 HDPE CONDUIT UP TO 2" (3 OF 8)	FT	600'	-
UGB-30960 - PLACE UP TO 288 COUNT FOC IN CONDUIT. UP TO 1500' (INCL. COIS)	FT	600'	-
UGB-30970 - PLACE UP TO 288 COUNT FOC IN CONDUIT. (EACH ADDITIONAL CABLE)	FT	600'	-
UGB-31060 - REMOVE & DISPOSE OF CABLE	FT	600'	-
UGB-31070 - REMOVE & DISPOSE OF CABLE, EACH ADDITIONAL CABLE	FT	600'	-
MAT-90070 - CONDUIT: 1 1/2" HDPE SDR-11	FT	4800'	-

FULSHEAR, TX
FORT BEND COUNTY

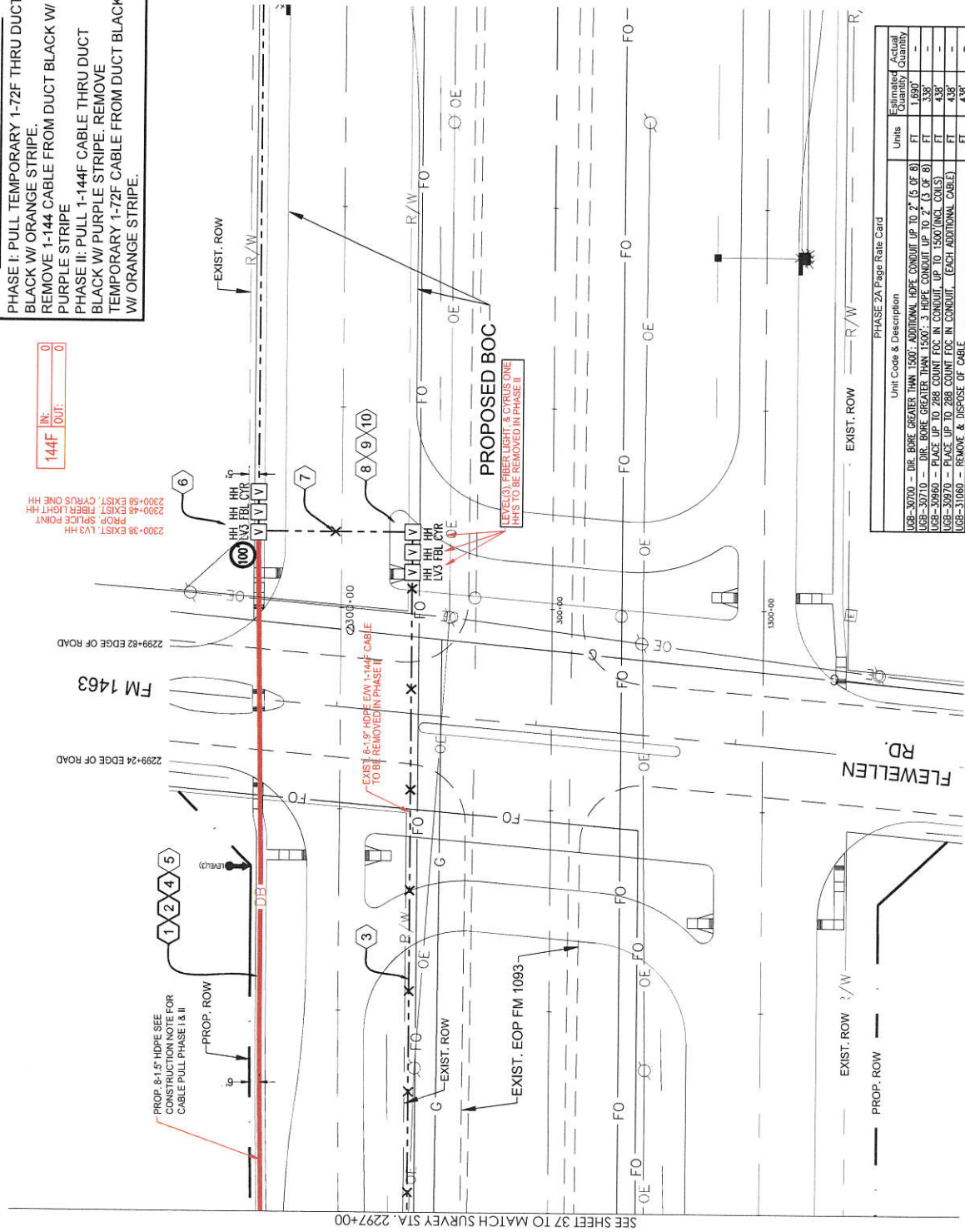
CONSTRUCTION NOTE:

PHASE I: PULL TEMPORARY 1-72F THRU DUCT BLACK W/ ORANGE STRIPE.
REMOVE 1-144 CABLE FROM DUCT BLACK W/ PURPLE STRIPE
PHASE II: PULL 1-144F CABLE THRU DUCT BLACK W/ PURPLE STRIPE. REMOVE TEMPORARY 1-72F CABLE FROM DUCT BLACK W/ ORANGE STRIPE.

144F IN: 0
OUT: 0

2300-38 EXIST. LV3 HH
PROP. SPlice POINT
2300-48 EXIST. FIBER LIGHT HH
2300-68 EXIST. CRUISER ONE HH

- CONSTRUCTION NOTES**
- CONDUIT OWNER: LEVEL (3)
CONDUIT LENGTH: 338'
CONDUIT QTY: 8
CONDUIT SIZE: 1.5"
CONDUIT TYPE: SDP-11 HDPE
NOTES: DIRECTIONAL BORE 8-1.5" HDPE TO BE E/W 1-144F LEVEL (3) CABLE
CABLE FIBERS: 72F
CABLE OWNER: LEVEL (3)
CABLE LENGTH: 438'
NOTES: PULL CABLE IN NEW 1.5" HDPE, LEAVE 100' COIL IN EXIST. LEVEL (3) HH FOR SPICE
 - CABLE FIBERS: 144F
CABLE OWNER: LEVEL (3)
CABLE LENGTH: 438'
NOTES: REMOVED EXIST. 144F CABLE FROM EXIST. CONDUIT
CABLE FIBERS: 144F
CABLE OWNER: LEVEL (3)
CABLE LENGTH: 438'
NOTES: PHASE I PULL CABLE IN NEW 1.5" HDPE, LEAVE 100' COIL IN EXIST. LEVEL (3) HH FOR SPICE
 - CABLE FIBERS: 72F
CABLE OWNER: LEVEL (3)
CABLE LENGTH: 438'
NOTES: PHASE I REMOVED EXIST. 72F CABLE FROM EXIST. CONDUIT
 - EXISTING LEVEL (3) HANDHOLE
NOTE: LEAVE 100' COIL IN HH FOR SPICE
 - PHASE II
CONDUIT OWNER: LEVEL (3)
CONDUIT LENGTH: 77'
CONDUIT QTY: 8
CONDUIT SIZE: 1.5"
CONDUIT TYPE: HDPE
NOTES: REMOVED EXIST. 144F CABLE FROM CONDUIT
 - PHASE II
EXISTING LEVEL (3) HANDHOLE
NOTE: TO BE REMOVED
 - PHASE II
EXISTING FIBERLIGHT HANDHOLE
NOTE: TO BE REMOVED
 - PHASE II
EXISTING CRUISER ONE HANDHOLE
NOTE: TO BE REMOVED



PHASE ZA Page Rate Card

Unit Code & Description	Units	Estimated Quantity	Actual Quantity
UGB-30700 - DIR. BORE GREATER THAN 1500' - ADDITIONAL HDPE CONDUIT UP TO 2' (5 OF 8)	FT	1,650'	-
UGB-30700 - DIR. BORE GREATER THAN 1500' - 3 HDPE CONDUIT UP TO 2' (3 OF 8)	FT	338'	-
UGB-30600 - DIR. BORE GREATER THAN 1500' - 1 HDPE CONDUIT UP TO 2' (3 OF 8)	FT	438'	-
UGB-30670 - PLACE UP TO 288' CONDUIT LOC IN CONDUIT. (EACH ADDITIONAL COILS)	FT	438'	-
UGB-31060 - REMOVE & DISPOSE OF CABLE - EACH ADDITIONAL CABLE	FT	438'	-
UGB-31070 - REMOVE & DISPOSE OF CABLE - EACH ADDITIONAL CABLE	EA	3	-
UGB-31360 - REMOVE EXISTING - 30'x60'x36" NON-CONCRETE MANHOLE/HANDHOLE	EA	3	-
MAI-90070 - CONDUIT: 1 1/2" HDPE SUR-11	FT	2704'	-

SITE PLAN

3	03/7/18	GFS	GFS	REVISION
2	06/28/17	GFS	GFS	CONSTRUCTION
1				COMMENT
NO.	DATE	ENG. DESIGN	DRAWING	

Level(3)
COMMUNICATIONS

LEVEL 3 ENGINEERING & ARCHITECTURE
ENGINEERING FIRM: SOLE FIELD SERVICES
PROJECT NUMBER: FM 1093 WESTPARK EXTENSION PHASE II
LOCATION: FULSHEAR, TX

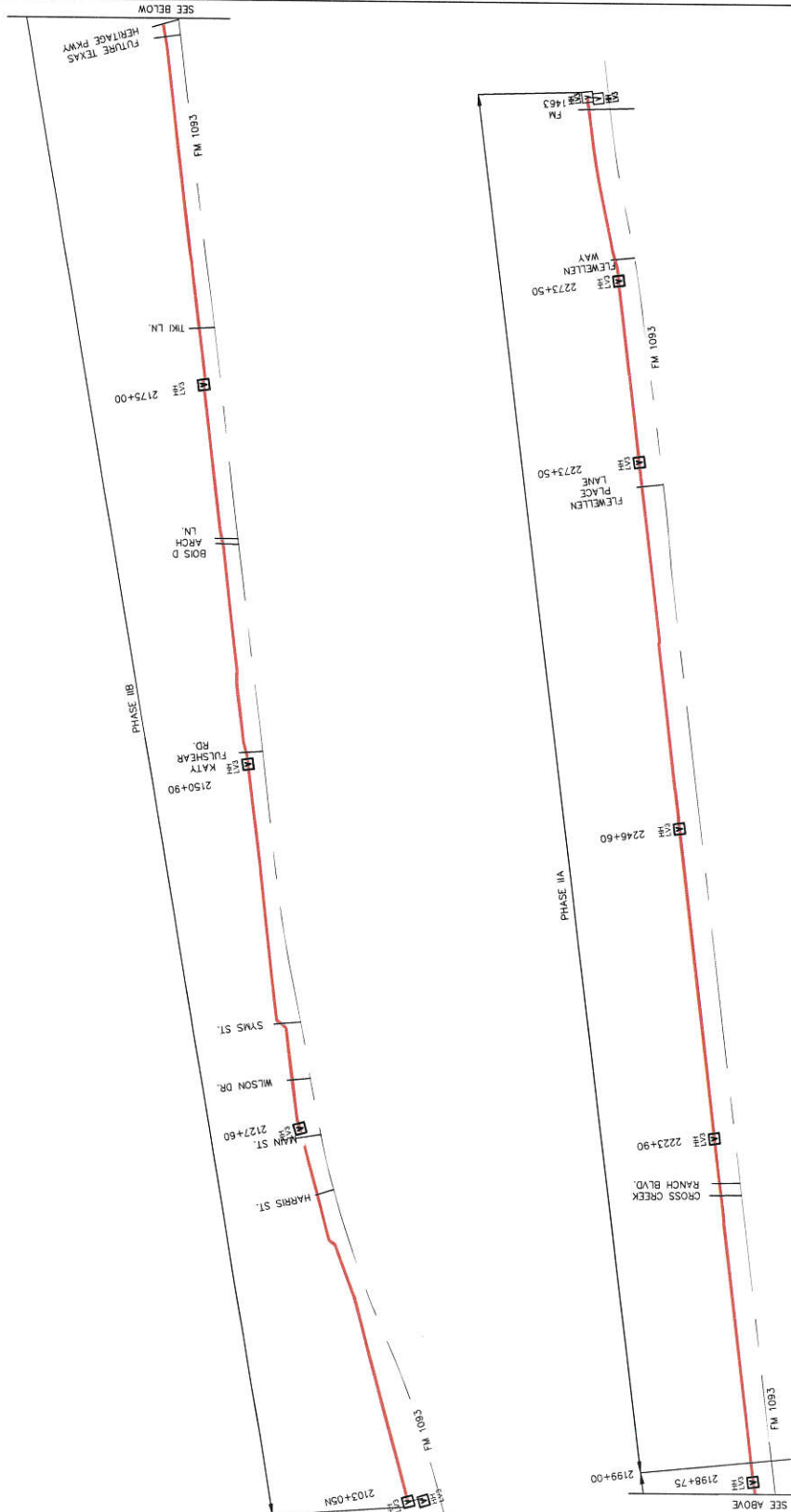
SCALE:
HORI: 1" = 50'
VERT: 1" = 10'

DRAWING NAME: Level 3 Fulshear, TX, FM 1093 Westpark Extension Phase II
CONFIDENTIAL/PROPRIETARY SHEET 38 OF 43



SEE SHEET 37 TO MATCH SURVEY STA. 2297+00

CABLE PULL SCHEMATIC
NOT TO SCALE



CONSTRUCTION NOTE:
 PHASE I: PULL TEMPORARY 1-72F THRU DUCT
 BLACK W/ ORANGE STRIPE.
 REMOVE 1-144 CABLE FROM DUCT BLACK W/
 PURPLE STRIPE
 PHASE II: PULL 1-144F CABLE THRU DUCT
 BLACK W/ PURPLE STRIPE. REMOVE
 TEMPORARY 1-72F CABLE FROM DUCT BLACK
 W/ ORANGE STRIPE.

NO.	DATE	ENG. DESIGN	DRAFTING	CONSTRUCTION	COMMENT
1	06/28/17	GFS	GFS	GFS	
2	03/7/18	GFS	GFS	GFS	
3					

Level(3)
 CONSULTING ENGINEERS
 11111
 11111
 11111

LEVEL 3 ENGINEER: KEITH HALL
 ENGINEERING FIRM: GOLDEN FIELD SERVICES
 PROJECT NUMBER: FM 1093 WESTPARK EXTENSION PHASE II
 LOCATION: FULSHEAR, TX
 DRAWING NAME: 1093 Westpark Extension Phase II
 CONFIDENTIAL/PROPRIETARY SHEET: 42 OF 43

PHASE 2A Page Rate Card

Unit Code & Description	Units	Estimated Quantity	Actual Quantity
UGB-30700 - DIR. BORE GREATER THAN 1500': ADDITIONAL HDPE CONDUIT UP TO 2" (5 OF 8)	FT	41,315	-
UGB-30710 - DIR. BORE GREATER THAN 1500': 3 HDPE CONDUIT UP TO 2" (3 OF 8)	FT	8,263	-
UGB-30820 - ROD & PROOF EXISTING CONDUIT	FT	2,000	-
UGB-30960 - PLACE UP TO 288 COUNT FOC IN CONDUIT, UP TO 1500'(INCL COILS)	FT	10,663	-
UGB-30970 - PLACE UP TO 288 COUNT FOC IN CONDUIT, (EACH ADDITIONAL CABLE)	FT	10,663	-
UGB-31060 - REMOVE & DISPOSE OF CABLE	FT	7,863	-
UGB-31070 - REMOVE & DISPOSE OF CABLE, EACH ADDITIONAL CABLE	FT	10,663	-
UGB-31280 - PLACE NEW 30"X60"X36" NON-CONCRETE MANHOLE/HANDHOLE	EA	12	-
UGB-31360 - REMOVE & REPLACE EXISTING - 30"X60"X36" - NON-CONCRETE MH/HH	EA	4	-
UGB-31640 - EXCAVATE SMALL PIT: 6'X4'X5'	EA	2	-
UGB-32000 - PLACE LOCATE TEST STATION	EA	4	-
MAT-90070 - CONDUIT: 1 1/2" HDPE SDR-11	FT	66,104	-
MAT-90980 - TIER 15 - 30"X60"X36" - WITH KNOCK-OUTS AND RACKING	EA	8	-
MAT-92080 - TEST STATIONS - MARKER POST W/ REMOVABLE TOP	EA	4	-

PHASE 2B Page Rate Card

Unit Code & Description	Units	Estimated Quantity	Actual Quantity
UGB-30010 - TRENCH UP TO 1500': TRENCH 36" MINIMUM COVER	FT	135	-
UGB-30150 - PLACE ADDITIONAL HDPE IN OPEN TRENCH CONDUIT UP TO 2"	FT	675	-
UGB-30160 - PLACE 3 - HDPE CONDUITS IN OPEN TRENCH UP TO 2"	FT	135	-
UGB-30700 - DIR. BORE GREATER THAN 1500': ADDITIONAL HDPE CONDUIT UP TO 2" (5 OF 8)	FT	34,550	-
UGB-30710 - DIR. BORE GREATER THAN 1500': 3 HDPE CONDUIT UP TO 2" (3 OF 8)	FT	7,130	-
UGB-30820 - ROD & PROOF EXISTING CONDUIT	FT	2,405	-
UGB-30960 - PLACE UP TO 288 COUNT FOC IN CONDUIT, UP TO 1500'(INCL COILS)	FT	10,270	-
UGB-30970 - PLACE UP TO 288 COUNT FOC IN CONDUIT, (EACH ADDITIONAL CABLE)	FT	10,270	-
UGB-31060 - REMOVE & DISPOSE OF CABLE	FT	9,101	-
UGB-31070 - REMOVE & DISPOSE OF CABLE, EACH ADDITIONAL CABLE	FT	10,170	-
UGB-31280 - PLACE NEW 30"X60"X36" NON-CONCRETE MANHOLE/HANDHOLE	EA	15	-
UGB-31470 - REMOVE & REPLACE EXISTING - 30"X60"X36" - NON-CONCRETE MH/HH	EA	2	-
UGB-31640 - EXCAVATE SMALL PIT: 6'X4'X5'	EA	2	-
UGB-32000 - PLACE LOCATE TEST STATION	EA	6	-
MAT-90070 - CONDUIT: 1 1/2" HDPE SDR-11	FT	58,120	-
MAT-90980 - TIER 15 - 30"X60"X36" - WITH KNOCK-OUTS AND RACKING	EA	9	-
MAT-92080 - TEST STATIONS - MARKER POST W/ REMOVABLE TOP	EA	6	-

3	03/7/16	QFS	QFS	REVISION
2	06/29/17	QFS	QFS	CONSTRUCTION
1	DATE	END DESIGN	DRAWING	COMMENT

Level (3)
LEVEL 3 ENGINEERS, KEITH HALL
ENGINEERING FIRM: GOLDEN FIELD SERVICES
PROJECT NUMBER: FM 1033 WESTPARK EXTENSION PHASE II
LOCATION: FULSHEAR, TX

DRAWING NAME: 1033 Westpark Extension Phase II
17-10-000
CONFIDENTIAL/PROPRIETARY SHEET: 43 OF 43

Exhibit B

Construction Cost Estimate


Date 9/17/18
Fort Bend County

WC
Initial Date 4/5/18
Zayo Group, LLC

Sow	FM 1093 and		
Description	Relocation		
Market	TX, Houston		
PA	151200	1 conduit	
Task	Online Directional Boring	Zayo	Cost Breakdown
UGB-30700:UGB:Directional Bore Greater Than 1500':Directional Bore greater than 1500': Additional HDPE conduit up to 2"	\$ 101,221.75	\$ 12,652.72	Cost divided via pro-rata
UGB-30710:UGB:Directional Bore Greater Than 1500':Directional Bore greater than 1500': 3 HDPE conduits up to 2" (on one reel)	\$ 156,997.00	\$ 19,624.63	Cost divided via pro-rata
UGB-31280:UGB:Handhole / Manhole Excavation & Placement:Place New - 30"x60"x36" - Non-concrete Manhole / Handhole	\$ 9,072.00	\$ 2,268.00	Costs divided 4 ways.
UGB-31360:UGB:Handhole / Manhole Excavation & Placement:Remove Existing - 24"x36"x36" - Non-concrete Manhole / Handhole	\$ 1,158.00	\$ 289.50	Costs divided 4 ways.
UGB-31640:UGB:Pits:Excavate Small Pit: 6'x4'x5'	\$ 1,670.00	\$ 208.75	Cost divided via pro-rata
MAT-90070:MAT:Conduit :Conduit: 1 1/4" HDPE SDR-11	\$ 34,374.08	\$ 4,296.76	Cost divided via pro-rata
MAT-90980:MAT:Handhole / Manhole:Tier 15 30"x60"x36" - With knock-outs and racking - Including Cover	\$ 12,750.00	\$ 3,187.50	Costs divided 4 ways.
Total	\$ 317,242.83	\$ 42,527.85	
Fort Bend County Reimbursement (50%)	\$ 158,621.42	\$ 21,263.93	

Exhibit C

Schedule of Work and Estimated Dates of Completion

(As Shown Below)

Construction Schedule:

Begin Construction: April 2, 2018
Complete Construction: May 31, 2018

AWB 4/17/18
Date
Fort Bend County

WC 4/5/18
Initial Date
Zayo Group, LLC