



Fort Bend County Engineering
FORT BEND COUNTY, TEXAS

Richard W. Stolleis, P.E.
County Engineer

September 17, 2018

Commissioner James Patterson
Fort Bend County Precinct 4
12919 Dairy Ashford Road, Ste. 200
Sugar Land, TX 77478

RE: Chelsea Harbour, Sections 1 & 2 - Addition of "NO PARKING" signs on cul-de-sacs

Dear Commissioner Patterson:

At the request of the Chelsea Harbour HOA, Fort Bend County Engineering Department has completed the traffic control plan to prohibit parking in cul-de-sacs throughout the Chelsea Harbour subdivision. The parking prohibition applies to:

- Cairns Court
- Tasmania Court
- Ingham Court
- Sandy Ripple Court
- Ashmore Reef Court
- Castlemaine Court
- Hawkesbury Court
- Manorbier Court
- Nelson Bay Court
- Dunrobin Way

The public hearing date for acceptance for the plan will be scheduled on the next available Commissioner's Court Agenda.

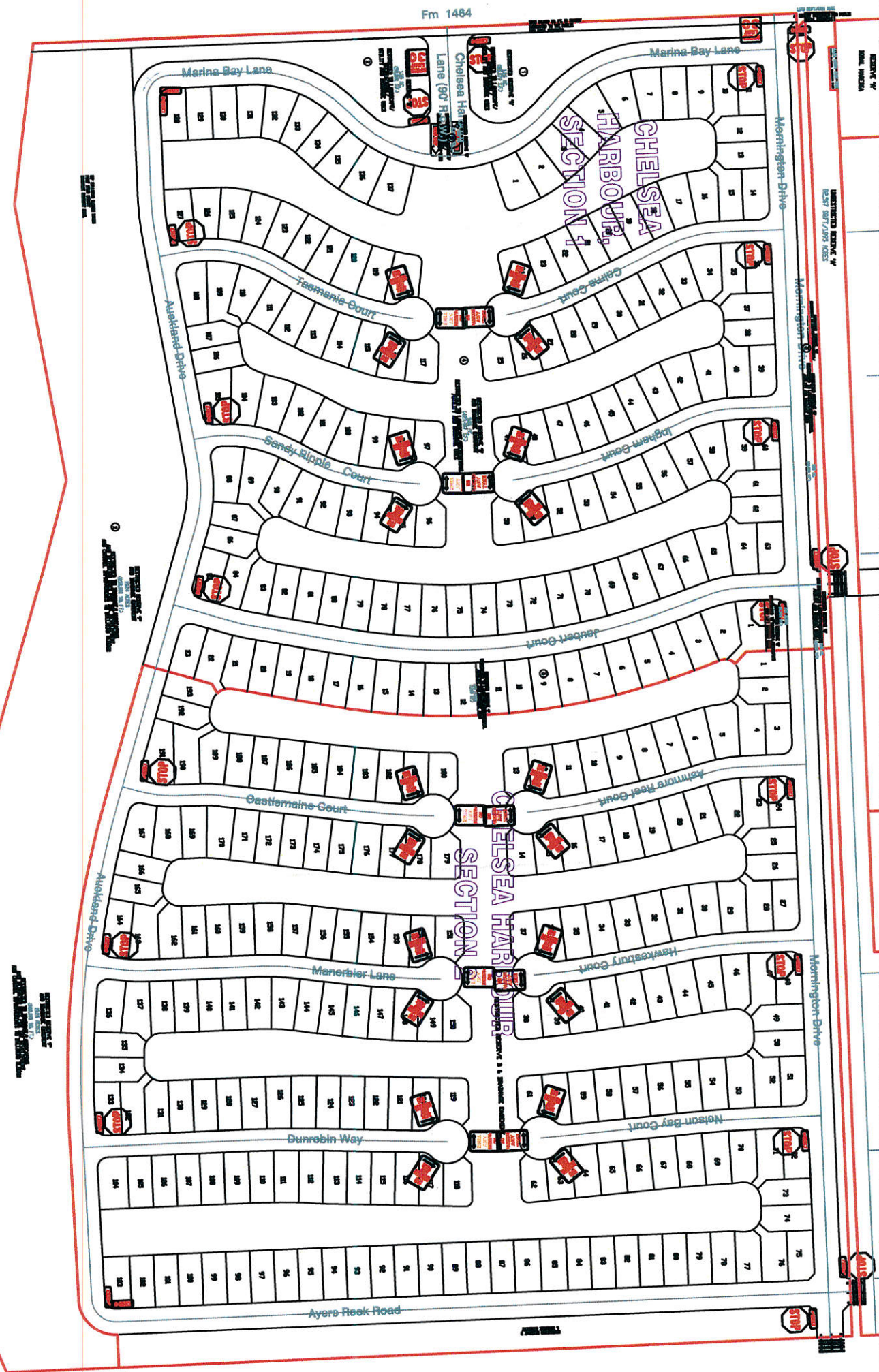
A copy of the traffic control plan is attached for your review. If we can be of further assistance please do not hesitate to contact me at 281-633-7528 or chris.debaillon@fortbendcountytexas.gov.

Sincerely,

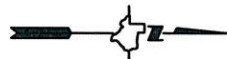
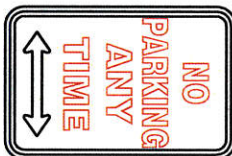
Chris Debaillon, PE, PTOE
Assistant County Engineer - Traffic

cc: Judge Robert E. Hebert, County Judge
Marc Grant - FBC Road & Bridge
Brian Fields - Signage Department
File

301 Jackson St., Suite 401, Richmond, TX 77469
Phone 281-633-7500



Sign Detail



Note:

The purpose of this traffic control plan is to revise traffic control for Chelsea Harbour, Sections 1 and 2 with the addition of "No Parking" (R7-1) signs as indicated on the drawing.

Drawn By: L. Brdecka

Date: 9-17-19

Approved By: Chris Deballon, PE PTOE

Date: 9/17/18

Scale

1" = 300'-0"

**Chelsea Harbour,
Sections 1 and 2
(Revised) Control Map and
Traffic Sign Layout**

Fort Bend County Engineering Dept.
301 Jackson Street
Richmond, Texas 77489