



Fort Bend County Engineering
FORT BEND COUNTY, TEXAS

Richard W. Stolleis, P.E.
County Engineer

September 10, 2018

Judge Robert E. Hebert
Fort Bend County Judge
301 Jackson Street
Richmond, Texas 77469

RE: Major Thoroughfare Plan modifications of Ricefield Road

Dear Judge Hebert:

Fort Bend County Engineering respectfully requests a modification to the Fort Bend County Major Thoroughfare Plan (MTFP) to downgrade Ricefield Road from a Major Thoroughfare to a Collector between FM 2977 (Minonite Road) to 2,600' southeast of the Benton Road right-of-way alignment, modify the alignment for a 90 degree intersection with FM 2977 and to add Ricefield Road as a Collector between the proposed extension of Spacek Road to FM 2977 (Minonite Road) to support the adopted City of Rosenberg Major Thoroughfare Plan.

A copy of the map is attached for your review. The public hearing date for acceptance of the change is being scheduled. If you should have any questions, please give me a call.

Sincerely,

A handwritten signature in blue ink, appearing to read "Maggie Dalton", is written over a horizontal line.

Maggie Dalton
Development Services Manager

MD/mjs

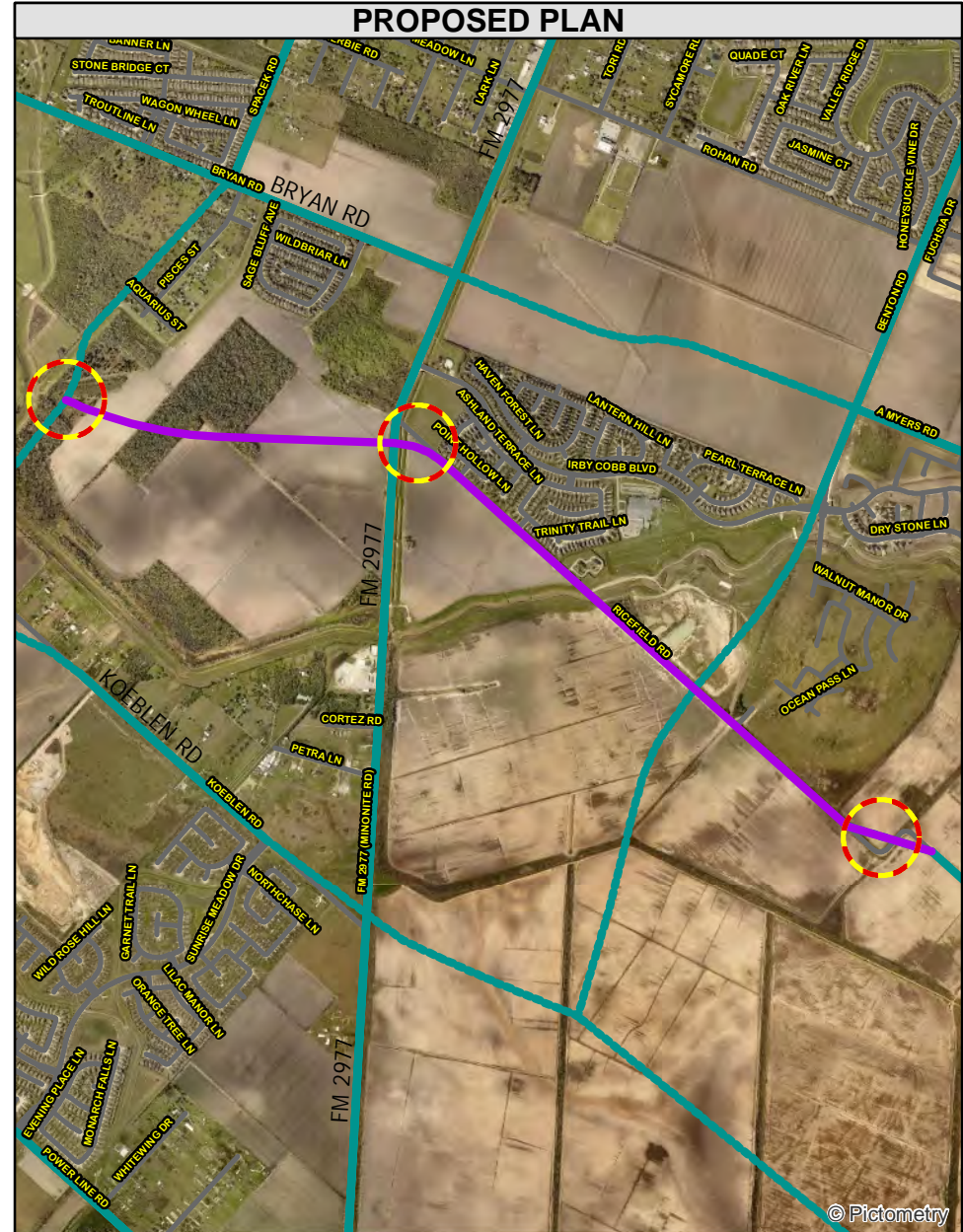
cc: Commissioner Vincent M. Morales, Jr., Pct. 1
Commissioner Grady Prestage, Pct. 2
Commissioner W. A. Andy Meyers, Pct. 3
Commissioner James Patterson, Pct. 4
Mr. Richard W. Stolleis, P.E., County Engineer
File

Ricefield Rd to Collector Road & Addition

ADOPTED/CURRENT PLAN



PROPOSED PLAN



Thoroughfare Plan 2018 Update



Proposed Thoroughfare Changes

- Collector
- Major Thoroughfare
- Other Roads



0 0.25 0.5 Miles

LEGAL DISCLAIMER
This Geographical Information Systems (GIS) Data is a public resource of general information. The information contained was generated from GIS data maintained by Fort Bend County and different sources and agencies. The County of Fort Bend makes no warranty, representation, or guarantee as to the content sequence, accuracy, timeliness, or completeness of any of the spatial data or database information provided herein. The County of Fort Bend shall assume no liability for any errors, omissions, or inaccuracies in the information provided, regardless of how caused; or any decision made or action taken or not taken by any person relying on any information or data furnished within. If any errors are detected, please contact the GIS Division of Fort Bend County Engineering so they may be corrected.