



**REVIEW BY FORT BEND COUNTY
COMMISSIONERS COURT**

**Fort Bend County
Engineering Department**
301 Jackson Suite 401
Richmond, Texas 77469
281.633.7500
Permits@fortbendcountytx.gov

- Right of Way Permit**
- Commercial Driveway Permit**

Permit No: 2018-20120

Applicant: MCI Metro Access Transmission Services, Corp./Eagle Eye Permitting & Design, LLC

Job Location Site: 13825 W Bellfort Street, Sugar Land, TX 77478

Bond No. **Date of Bond:** 5/1/2017 **Amount:** \$50,000.00

The above applicant came to make use of certain Fort Bend County property subject to, "The Order Regulating the Laying, Construction, Maintenance, and Repair of Buried Cables, Conduits, and Pole Lines, In, Under, Across or Along Roads, Streets, Highways, and Drainage Ditches in Fort Bend County, Texas, Under the Jurisdiction of the Commissioners Court of Fort Bend County, Texas," as passed by the Commissioners Court of Fort Bend County, Texas, of the Minutes of the Commissioners Court of Fort Bend County, Texas, to the extent that such order is not inconsistent with Chapter 181, Vernon's Texas Statutes and Codes Annotated.

Notes:

1. Evidence of review by the Commissioners Court must be kept on the job site and failure to do so constitutes grounds for job shutdown.
2. Written notices are required:
 - a. 48 hours in advance of construction start up, and
 - b. When construction is completed and ready for final inspection, submit notification to Permit Administrator thru MyGovernmentOnline.org portal.
3. This permit expires one (1) year from date of permit if construction has not commenced.

On this 11th day of September, 2018, Upon Motion of Commissioner _____, seconded by Commissioner _____, duly put and carried, it is ORDERED, ADJUDGED AND DECREED that said notice of said above purpose is hereby acknowledged by the Commissioners Court of Fort Bend County, Texas, and that said notice be placed on record according to the regulation order thereof.

Signature

By: 
County Engineer

Presented to Commissioners Court and approved.

Date Recorded _____ Comm. Court No. _____

By: N/A
Drainage District Engineer/Manager

Clerk of Commissioners Court

By: _____
Deputy



**PERMIT APPLICATION REVIEW FORM FOR
CABLE, CONDUIT, AND POLE LINE ACTIVITY
IN FORT BEND COUNTY**

**Fort Bend County
Engineering Department**
301 Jackson Suite 401
Richmond, Texas 77469
281.633.7500
Permits@fortbendcountytx.gov

- Right of Way Permit**
 Commercial Driveway Permit

Permit No: 2018-20120

The following "Notice of Proposed Cable, Conduit, and/or Pole Line activity in Fort Bend County" and accompanying attachments have been reviewed and the notice conforms to appropriate regulations set by Commissioner's Court of Fort Bend County, Texas.

(1) COMPLETE APPLICATION FORM:

- a. Name of road, street, and/or drainage ditch affected.
 b. Vicinity map showing course of directions
 c. Plans and specifications

(2) BOND:

- County Attorney, approval when applicable.
- Perpetual bond currently posted. Bond No: ██████████ Amount: \$50,000.00
- Performance bond submitted. Bond No: _____ Amount: _____
- Cashier's Check Check No: _____ Amount: _____

(3) DRAINAGE DISTRICT APPROVAL (WHEN APPLICABLE):

Drainage District Approval

Date

We have reviewed this project and agree it meets minimum requirements.



Permit Administrator

8/31/2018

Date

MCImetro
ACCESS TRANSMISSION SERVICES CORPORATION

OUTSIDE PLANT CONSTRUCTION
FIBER OPTIC CABLE ROUTE

MCI ONE-FIBER
BISSONNET
HOUSTON, TX

SITE NFID: 1712CDUF

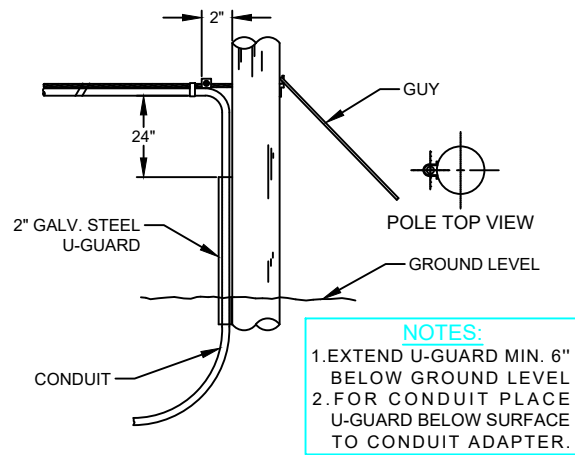
PROJECT STATUS: CONSTRUCTION



GENERAL AERIAL CONSTRUCTION DETAILS

TYPICAL DETAIL "A"

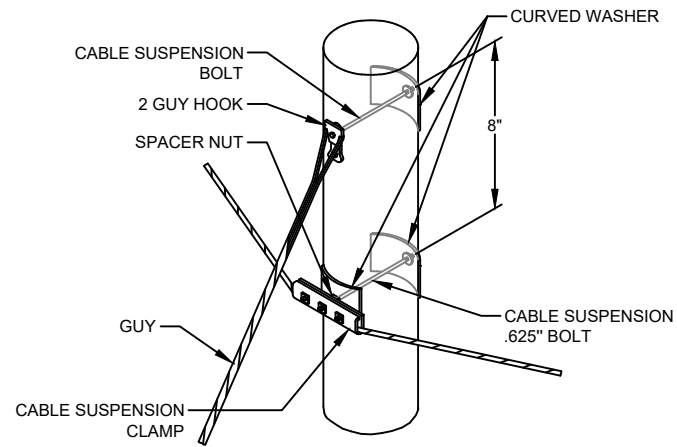
POLE ARRANGEMENT FOR AERIAL TO BURIED



NOTES:
1. EXTEND U-GUARD MIN. 6" BELOW GROUND LEVEL
2. FOR CONDUIT PLACE U-GUARD BELOW SURFACE TO CONDUIT ADAPTER.

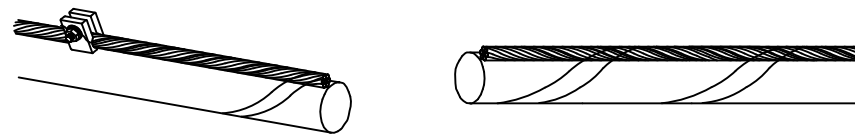
TYPICAL DETAIL "D"

SUSPENSION STRAND - PULL TOWARD POLE - LESS THAN 5 FEET



TYPICAL DETAIL "G"

JOINING 045 LASHING WIRE



FORMING WIRE OVER STUD OF CLAMP

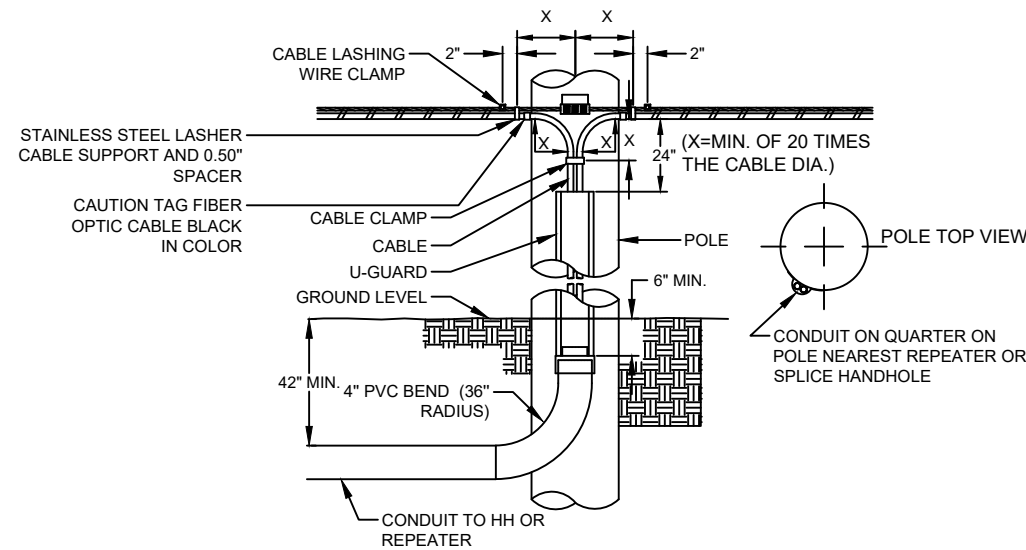
REMOVE ANY SLACK IN THE LASHING WIRE BY MAINTAINING A PULL ON THE WIRE AND TAPPING THE STRAND SHARPLY. THEN FORM THE WIRE OVER THE STUD AND TIGHTEN THE NUT. CUT THE FREE END OF THE LASHING WIRE OFF 0.75" BEYOND THE END OF THE CLAMP.

FORMING LASHING WIRE AROUND STRAND

FORM THE LASHING WIRE AROUND THE STRAND AND PLACE IT BELOW THE STUD AND BETWEEN THE SECOND WASHER AND STUD SHOULDER.

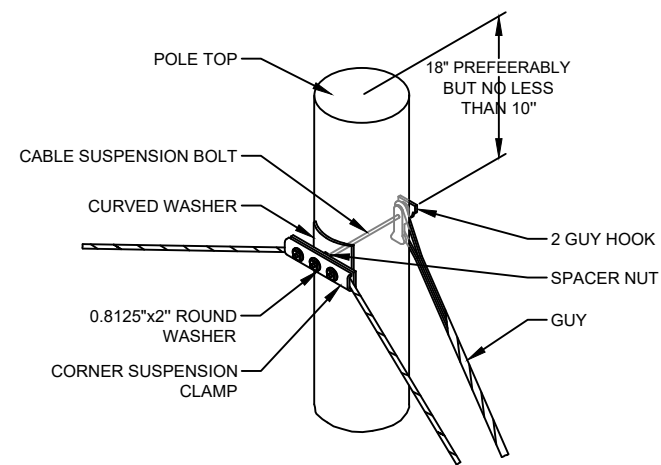
TYPICAL DETAIL "B"

POLE ARRANGEMENT FOR REPEATER OR HANDHOLE LOCATION



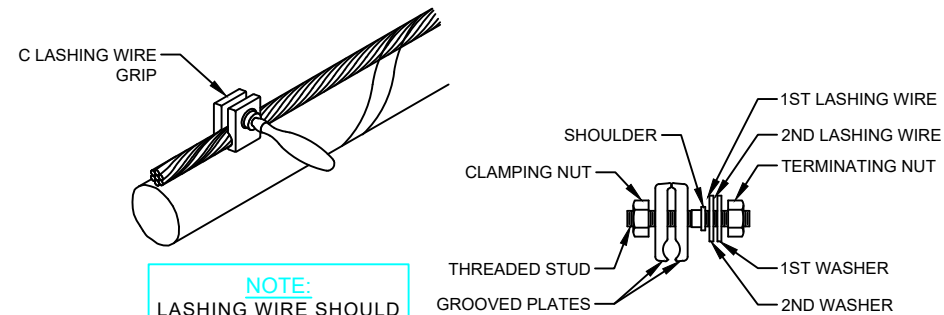
TYPICAL DETAIL "E"

SUSPENSION STRAND - PULL AWAY FROM POLE - 5 FEET OR MORE



TYPICAL DETAIL "H"

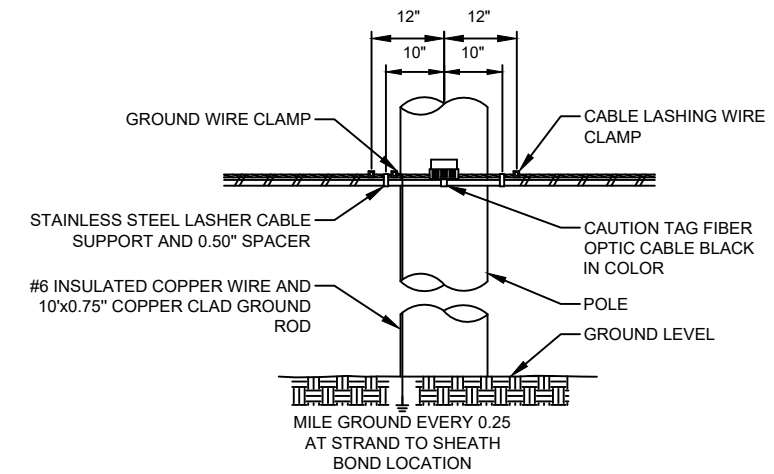
LASHING WIRE GRIP AND CLAMP



NOTE:
LASHING WIRE SHOULD FOLLOW LAY OF STRAND WIRES UNDER GRIP.

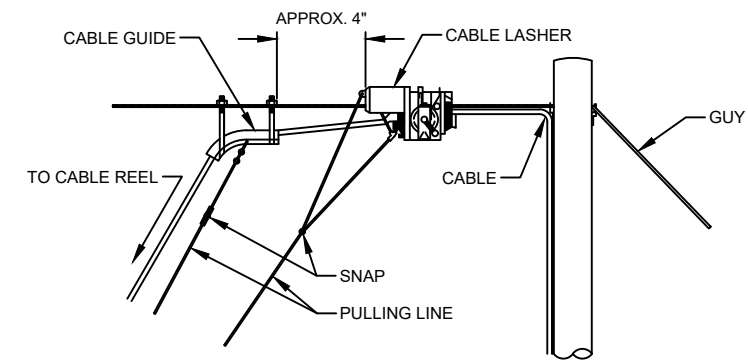
TYPICAL DETAIL "C"

TYPICAL CABLE & HARDWARE INSTALLATION



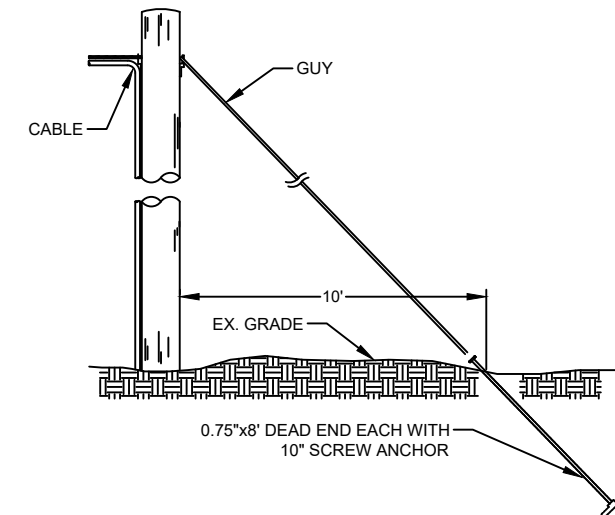
TYPICAL DETAIL "F"

TYPICAL ARRANGEMENT OF CABLE LASHER AND CABLE GUIDE



TYPICAL DETAIL "I"

ANCHOR & DOWN GUY



PROJECT: HOUSTON, TX
BISSONNET
NFID: 1712CDUF

MCImetro
ACCESS TRANSMISSION SERVICES CORPORATION
OUTSIDE PLANT CONSTRUCTION
TITLE: FIBER OPTIC ROUTE
BISSONNET
HOUSTON, TX

DATE: 03/10/18
ENGINEER:
DRAWN BY: RONALD C.

REVISIONS			
No.	DATE	DESCRIPTION	BY
0	03/18	CONSTRUCTION	JFF

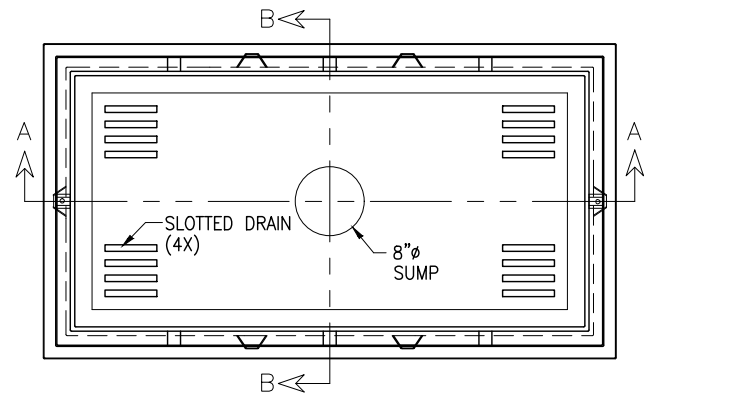
EXCEPT AS MAY BE OTHERWISE PROVIDED BY CONTRACT, THESE DRAWINGS AND SPECIFICATIONS SHALL REMAIN THE PROPERTY OF MCI COMMUNICATIONS SERVICES INC. BOTH BEING ISSUED IN STRICT CONFIDENCE AND SHALL NOT BE REPRODUCED, COPIED, OR USED FOR ANY PURPOSE WITHOUT SPECIFIC WRITTEN PERMISSION.

SCALE
HORIZONTAL: 1"=50'
VERTICAL: 1"=50'
MP TO MP
SHEET 06A OF 69
FILE: BISSONNET_1712CDUF

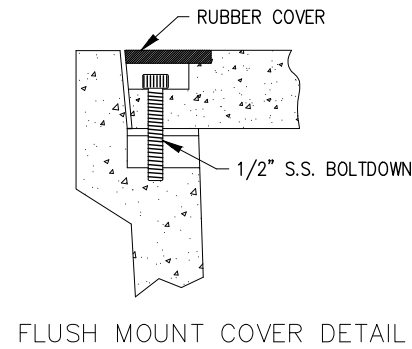
30" x 60" x 30" 30K STANDARD HANDHOLE DETAILS

PROJECT: _____
 HOUSTON, TX
 BISSONNET
 NFID: 1712CDUF

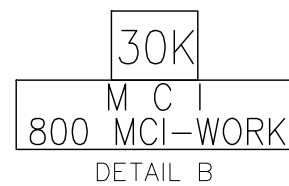
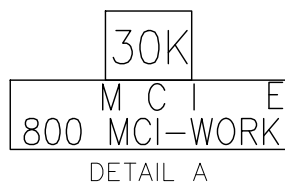
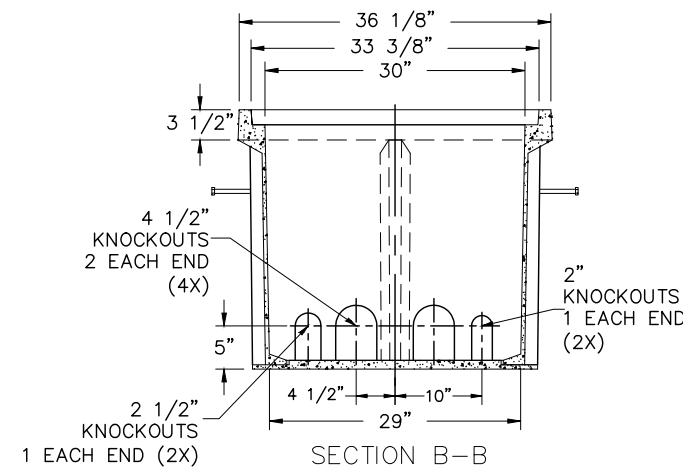
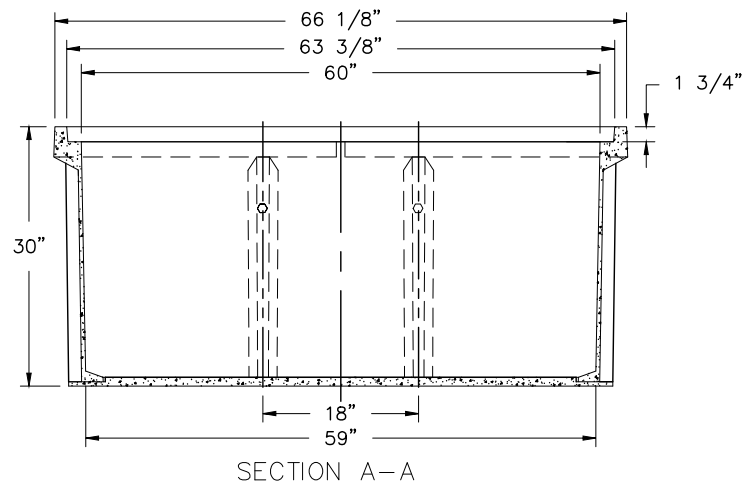
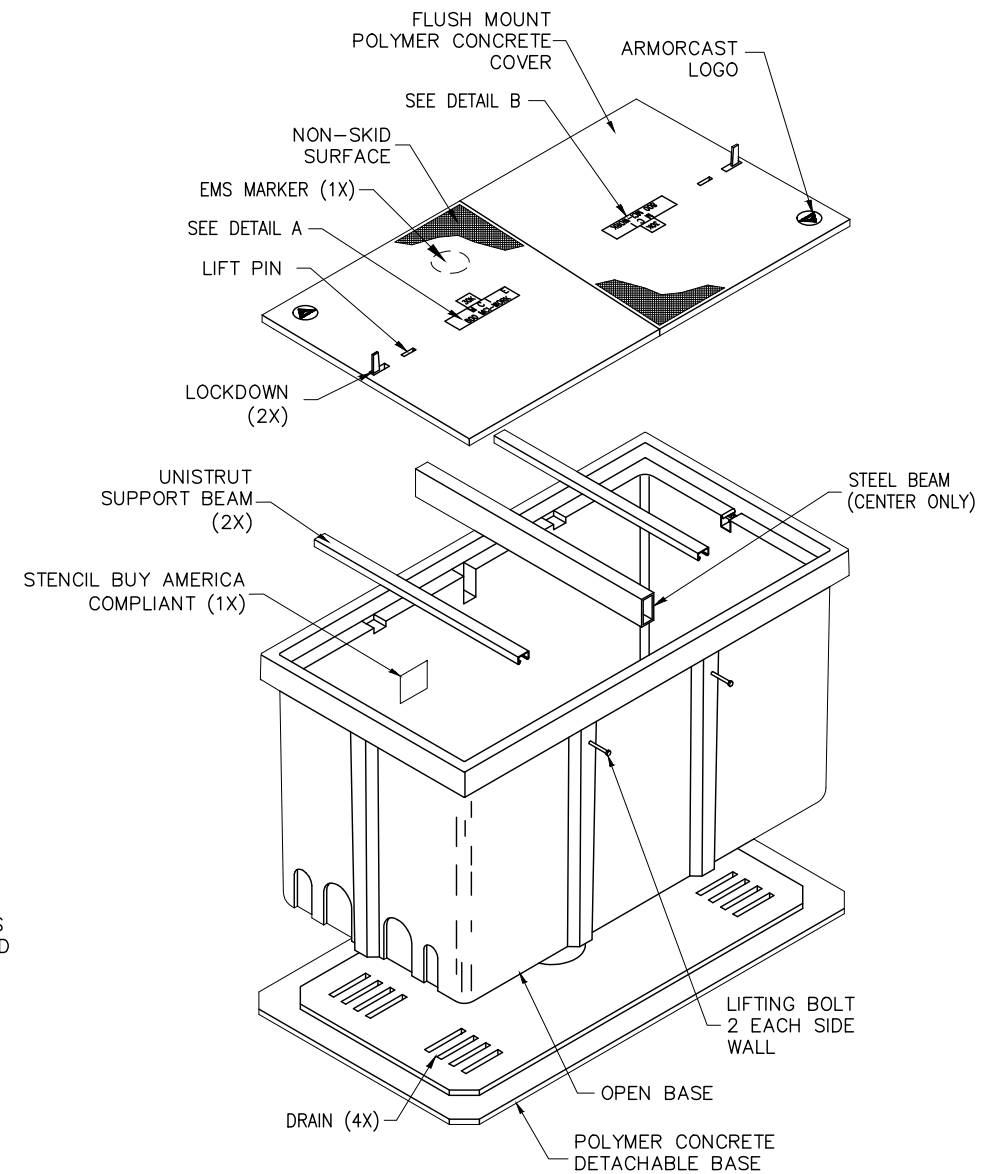
DETAIL "A"
 LOCKING DEVICE
 CROSS SECTION



DETAIL "B"
 FLUSH MOUNT
 COVER DETAIL



DETAIL "C"
 EXPLODED ISOMETRIC DETAIL



SEALED PLASTIC BAG PLACED INSIDE VAULT TO CONTAIN

ITEM	QTY	
1	(1)	JOHNNY LOCK KEY
2	(2)	S.S. JOHNNY BOLTS W/FLAT WASHER.
3		SHRINK WRAP COVERS TO FRAME FOR PACKAGING.

30K STANDARD HANDHOLE
30"x60"x30" POLYMER CONCRETE FLUSH MOUNT ASSEMBLY
MEETS SCTE/ANSI 77-TIER 22 LOADING CRITERIA
ADDITIONAL REQUIREMENTS:
DESIGNED LOAD: 30,000 LBS
MINIMUM FAILURE LOAD: 45,000 LBS

MCI metro
 ACCESS TRANSMISSION SERVICES CORPORATION
 OUTSIDE PLANT CONSTRUCTION
 TITLE: FIBER OPTIC ROUTE
 BISSONNET
 HOUSTON, TX

DATE: 03/10/18
 ENGINEER: _____
 DRAWN BY: RONALD C.

REVISIONS

No.	DATE	DESCRIPTION	BY
0	03/18	CONSTRUCTION	JFF

EXCEPT AS MAY BE OTHERWISE PROVIDED BY CONTRACT, THESE DRAWINGS AND SPECIFICATIONS SHALL REMAIN THE PROPERTY OF MCI COMMUNICATIONS SERVICES INC. BOTH BEING ISSUED IN STRICT CONFIDENCE AND SHALL NOT BE REPRODUCED, COPIED, OR USED FOR ANY PURPOSE WITHOUT SPECIFIC WRITTEN PERMISSION.

SCALE
 HORIZONTAL: 1"=50'
 VERTICAL: 1"=50'
 MP _____ TO MP _____
 SHEET 07 OF 69
 FILE: BISSONNET_1712CDUF

TRAFFIC CONTROL PLAN DETAILS



PROJECT: HOUSTON, TX
 BISSONNET
 NFID: 1712CDUF

TRAFFIC CONTROL PLAN SECTION SHALL BE COMPLETED BY ENGINEER

ROADWAY	POSTED SPEED	TAPER LENGTH	SPACING CHANNELIZING DEVICES		SING SPACING	BUFFER SPACE
			TAPER	TANGENT		
Dairy View Ln	20 MPH	150'	30'	60'	120'	90'
Shannon Hills Dr	20 MPH	150'	30'	60'	120'	90'
Bugle Rd	20 MPH	150'	30'	60'	120'	90'
Baneway Dr	30 MPH	150'	30'	60'	120'	90'
Rowan Ln	30 MPH	150'	30'	60'	120'	90'
Belle Park Dr	30 MPH	150'	30'	60'	120'	90'
Stroud Dr	30 MPH	150'	30'	60'	120'	90'

LEGEND

	Type 3 Barricade		Channelizing Devices
	Heavy Work Vehicle		Truck Mounted Attenuator (TMA)
	Trailer Mounted Flashing Arrow Board		Portable Changeable Message Sign (PCMS)
	Sign		Traffic Flow
	Flag		Flagger

Posted Speed *	Formula	Minimum Desirable Taper Lengths "L"			Suggested Maximum Spacing of Channelizing Devices		Minimum Sign Spacing "X" Distance	Suggested Longitudinal Buffer Space "B"
		10' Offset	11' Offset	12' Offset	On a Taper	On a Tangent		
30	$L = \frac{WS^2}{60}$	150'	165'	180'	30'	60'	120'	90'
35		205'	225'	245'	35'	70'	160'	120'
40		265'	295'	320'	40'	80'	240'	155'
45	L=WS	450'	495'	540'	45'	90'	320'	195'
50		500'	550'	600'	50'	100'	400'	240'
55		550'	605'	660'	55'	110'	500'	295'
60		600'	660'	720'	60'	120'	600'	350'
65		650'	715'	780'	65'	130'	700'	410'
70		700'	770'	840'	70'	140'	800'	475'
75		750'	825'	900'	75'	150'	900'	540'

* Conventional Roads Only
 * Taper lengths have been rounded off.
 ** L=Length of Taper(FT) W=Width of Offset(FT) S=Posted Speed(MPH)

- GENERAL NOTES**
- Flags attached to signs where shown are OPTIONAL.
 - All traffic control devices illustrated are REQUIRED, except those denoted with the triangle symbol are OPTIONAL.
 - Inactive work vehicles or other equipment should be parked near the right-of-way line and not parked on the paved shoulder.
 - A Shadow Vehicle with a TMA should be used anytime it can be positioned 30 to 100 feet in advance of the area of crew exposure without adversely affecting the performance or quality of the work. If workers are no longer present but road or work conditions require the traffic control to remain in place, Type 3 Barricades or other channelizing devices may be substituted for the Shadow Vehicle and TMA.
 - Additional Shadow Vehicles with TMAs may be positioned off the paved surface, next to those shown in order to protect wider work spaces.
 - Contractor shall provide and install traffic control devices in conformance with part VI of Texas Manual on Uniform Traffic Control Devices (TMUTCD - Latest edition with revisions) during construction.
 - Flaggers should use tow - way radios or other methods of communications to control traffic.
 - Light of work space should be based on the ability of flaggers to communicate.
 - If the work space is located near horizontal or vertical curve, the buffer distances should be increased in order to maintain adequate stopping sight distances to the flagger and a queue of stopped vehicles (see table above).
 - Channelizing devices on the center-line may be omitted when a pilot car is leading traffic and approved by the Engineer.
 - Flaggers should use 24" STOP/SLOW paddles to control traffic. Flags should be limited to emergency situations.
 - No lanes shall be blocked from 7am to 9am and 4pm to 6:30pm Monday thru Friday.
 - Off duty police officers required to direct traffic when applicable.
 - If project is within 400 feet from a signalized intersection, the Contractor shall contact Harris County Engineering Department, Traffic Signal Maintenance at (713) 881-3210 five (5) days prior to the start of construction.

ACCESS TRANSMISSION SERVICES CORPORATION
 OUTSIDE PLANT CONSTRUCTION
 TITLE: FIBER OPTIC ROUTE BISSONNET HOUSTON, TX

DATE: 03/10/18

ENGINEER: .

DRAWN BY: RONALD C.

REVISIONS

No.	DATE	DESCRIPTION	BY
0	03/18	CONSTRUCTION	JFF

EXCEPT AS MAY BE OTHERWISE PROVIDED BY CONTRACT, THESE DRAWINGS AND SPECIFICATIONS SHALL REMAIN THE PROPERTY OF MCI COMMUNICATIONS SERVICES INC. BOTH BEING ISSUED IN STRICT CONFIDENCE AND SHALL NOT BE REPRODUCED, COPIED, OR USED FOR ANY PURPOSE WITHOUT SPECIFIC WRITTEN PERMISSION.

SCALE

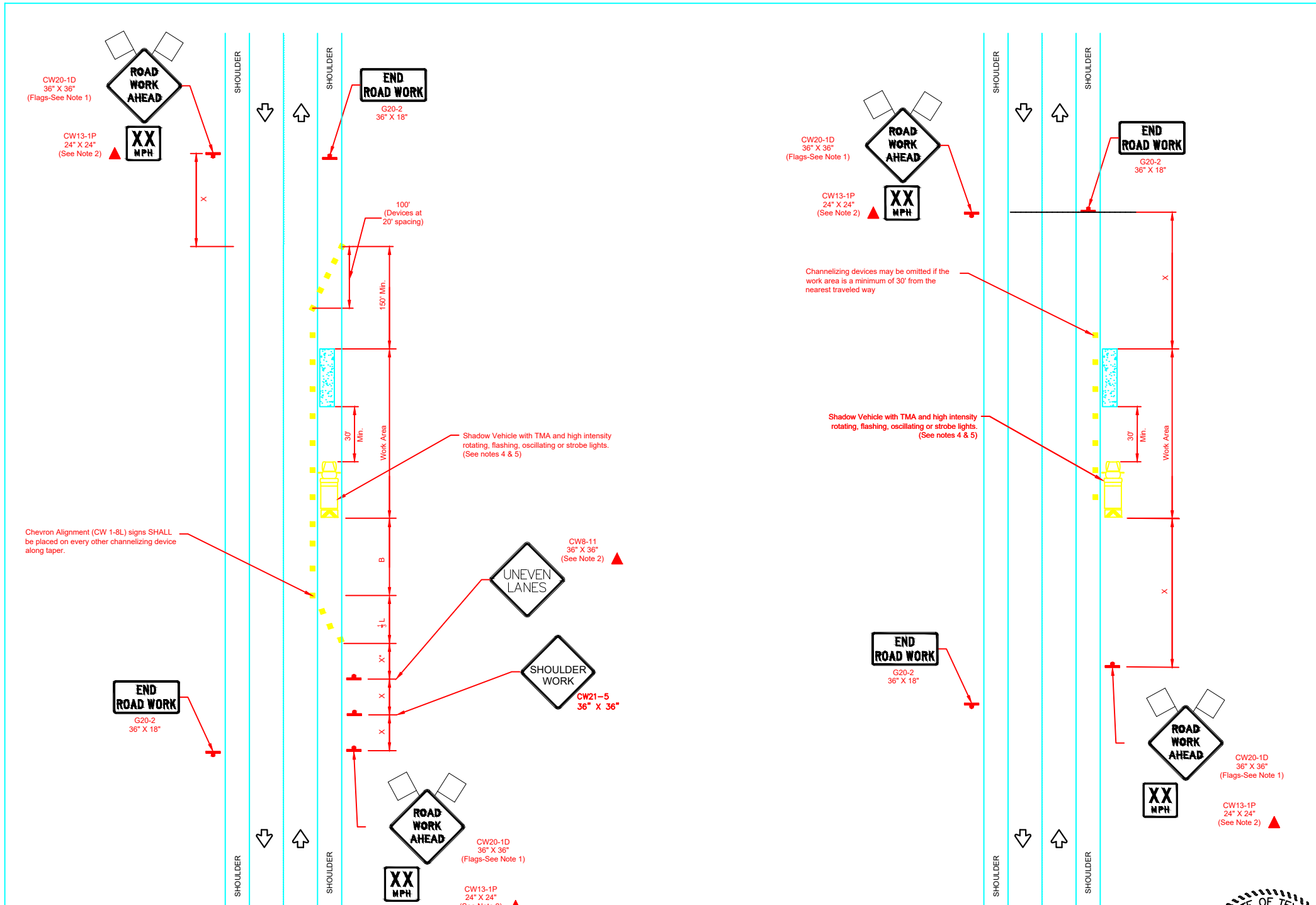
HORIZONTAL: 1"=50'

VERTICAL: 1"=50'

MP TO MP

SHEET 08 OF 69

FILE: BISSONNET_1712CDUF



WORK SPACE ON SHOULDER

WORK SPACE NEAR SHOULDER

NO.	REVISIONS	DATE	NAME
1	UPDATED DEPARTMENT NAME & GENERAL NOTES	4/16/15	BSH

HARRIS COUNTY
 ENGINEERING DEPARTMENT



E. GALVAN, P.E.
 Engineering Organization LLC



SIGNATURE: *[Signature]*

PROJECT TITLE:

DRAWN BY: BSH	SHEET DESCRIPTION: TRAFFIC CONTROL PLAN (ONE LANE, TWO WAY OPERATION)	HCED STANDARD 39
CK'D BY: BSH		
SCALE: N.T.S.	APPROVED BY:	SHEET NO: / /
DATE: 6/26/14		

